

Antenna specification

Company Name

Guangzhou LEBI Computer Technology Co.,Ltd.

Company address

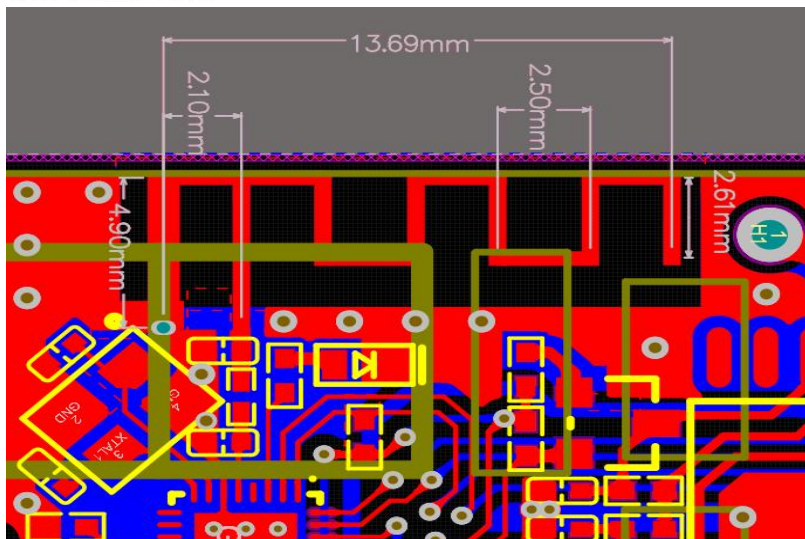
3/f, EASIDA building, No. 6 Tianbao Road, North Dongsheng industrial zone, Panyu County Avenue, Guangzhou City.

Applications

※Bluetooth Home RF

※ISM band 2.4GHz applications

1. Dimensions

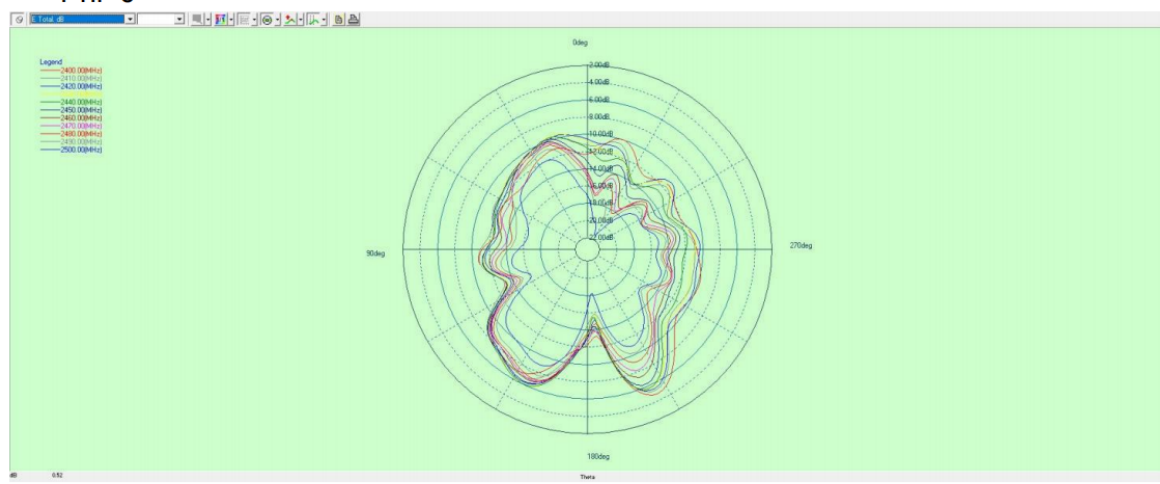


2. Specifications

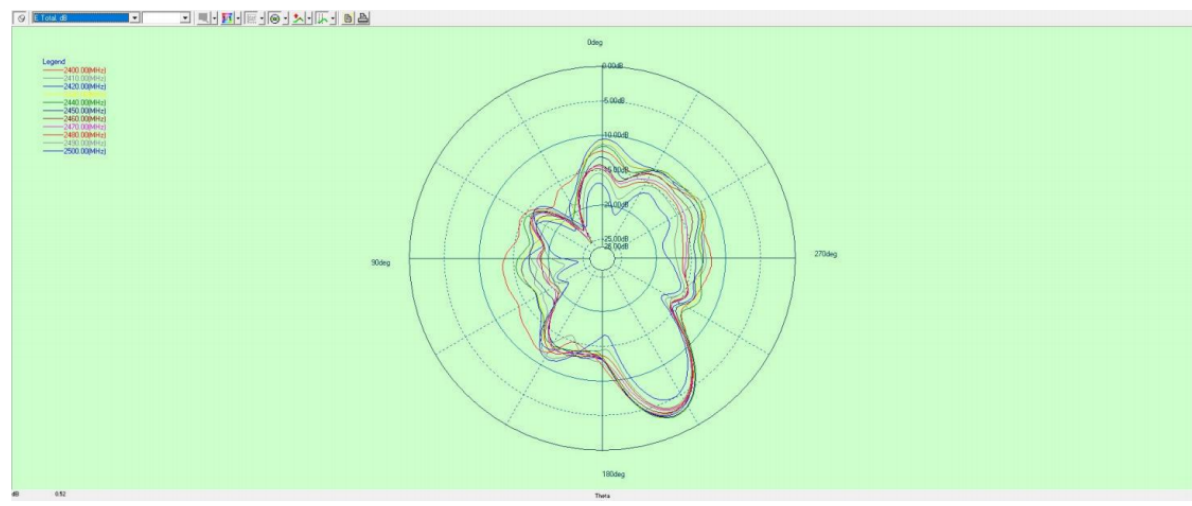
number	Item	Specifications
1	Working Central Frequency	2440 MHz
2	Band Width	(2400-2480)MHz
3	Gain	-1.59dBi
4	VSWR	≤2.0
5	Antenna type	PCB antenna
6	Azimuth Beam width	Omni - directional
7	Impedance	50ohm
8	Modulation mode	GFSK

1. 2D Radiation Pattern

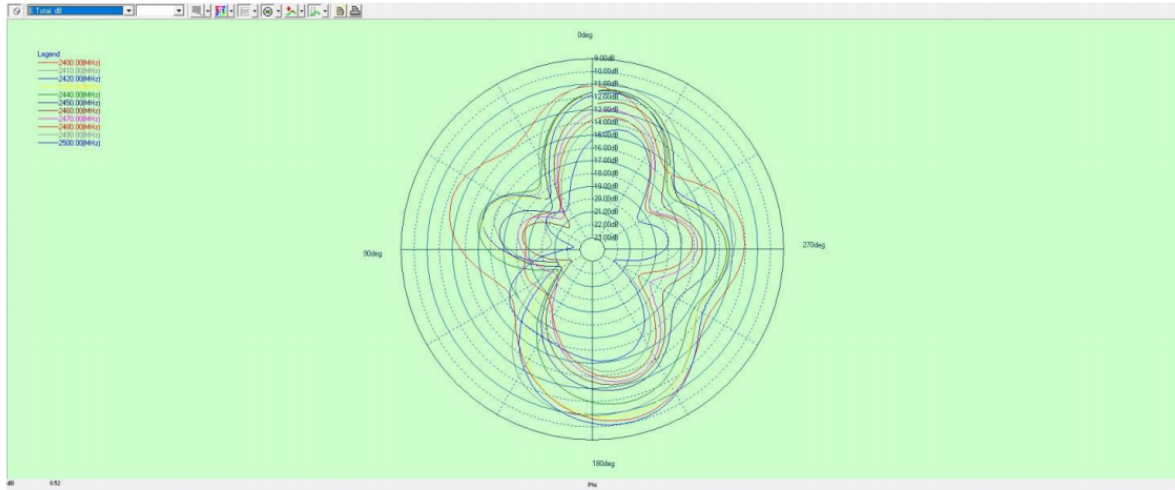
Phi=0°



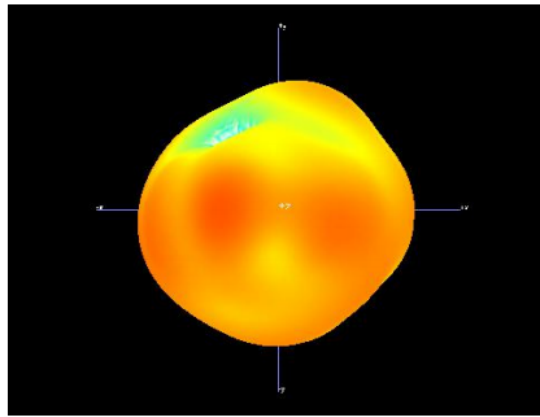
Phi=90°



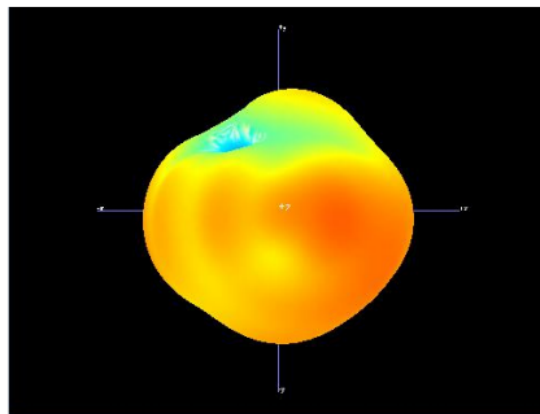
Theta=90°



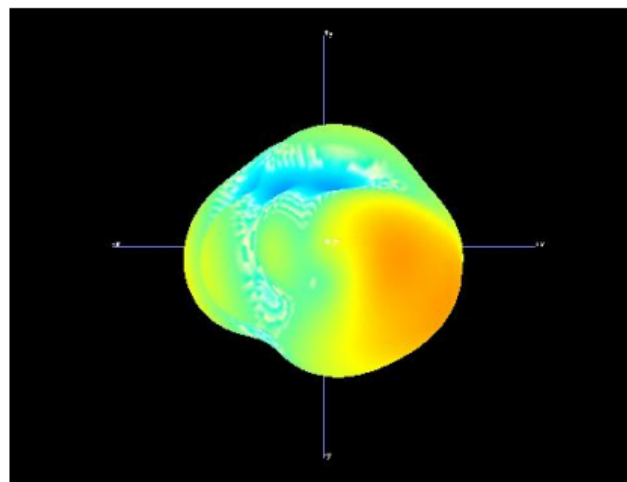
2. 3D Radiation Pattern



2400MHz



2440MHz



2480MHz

Gain

Frequency	Gain(dBi)
2400MHz	-2.77
2410MHz	-2.39
2420MHz	-1.94
2430MHz	-1.59
2440MHz	-1.64
2450MHz	-1.76
2460MHz	-2.38
2470MHz	-2.53
2480MHz	-2.64
2490MHz	-2.77
2500MHz	-3.86