



## Equipment Under Test (EUT) Description

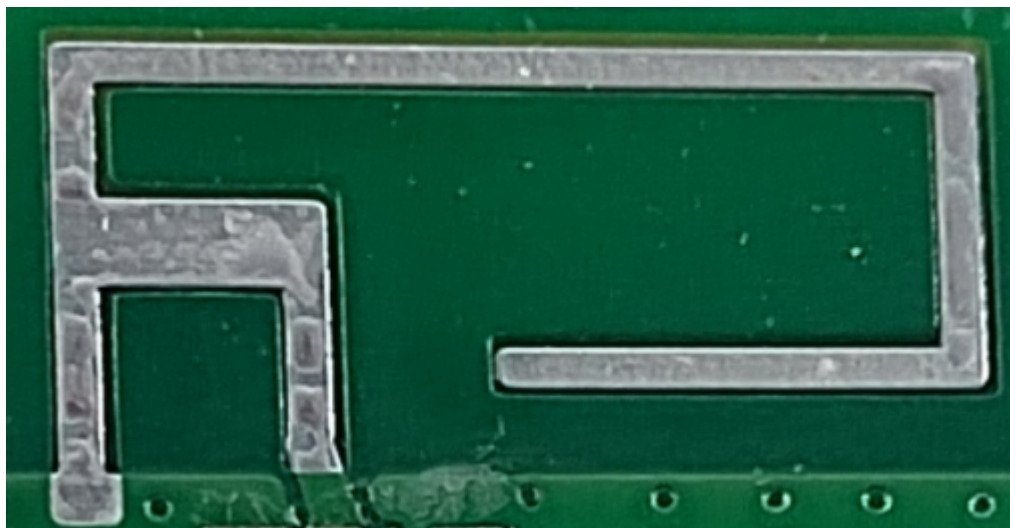
### Technical Information

Wireless Type	Bluetooth
Test frequency band	2400MHz~2483.5MHz
Brand name	N/A
Hardware Version	N/A
Software Version	N/A
IMEI	N/A
Sample number	1#

### Summary

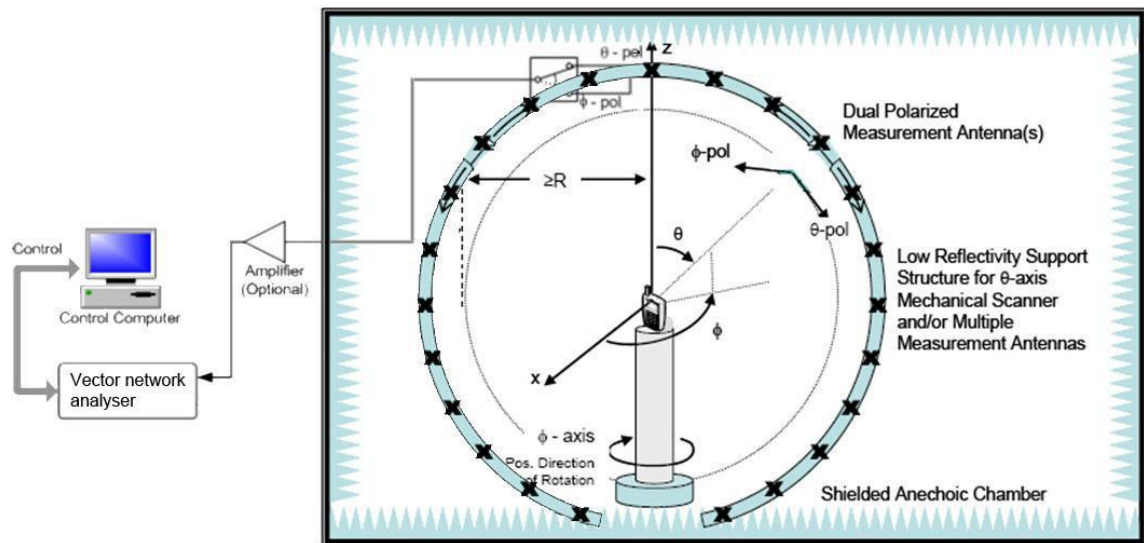
ITEM	ANT SPEC					
Model Name	2.4G ANT					
Frequency	2400MHz	2410MHz	2420MHz	2430MHz	2440MHz	2450MHz
	-2.77	-2.39	-1.94	-1.59	-1.64	-1.76
	2460MHz	2470MHz	2480MHz	2490MHz	2500MHz	
	-2.38	-2.53	-2.64	-2.77	-3.86	
MAX. Gain	-1.59.dB					
Polarization	Horizontal and Vertical					
Azimuth Beam Pattern	Omni-directional					
Impedance	50 Ohm					
Antenna Length	11.0mm					
Manufacture	Guangzhou LEBI Computer Technology Co.,Ltd.					

Antenna Photo & Length (mm)



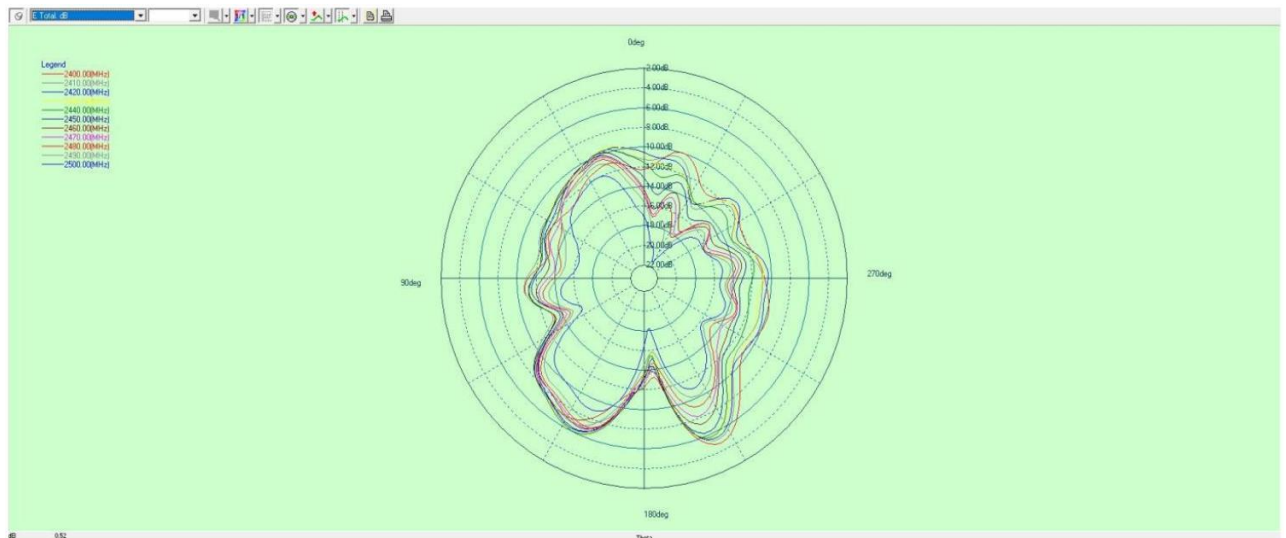


## 1. Test Setup

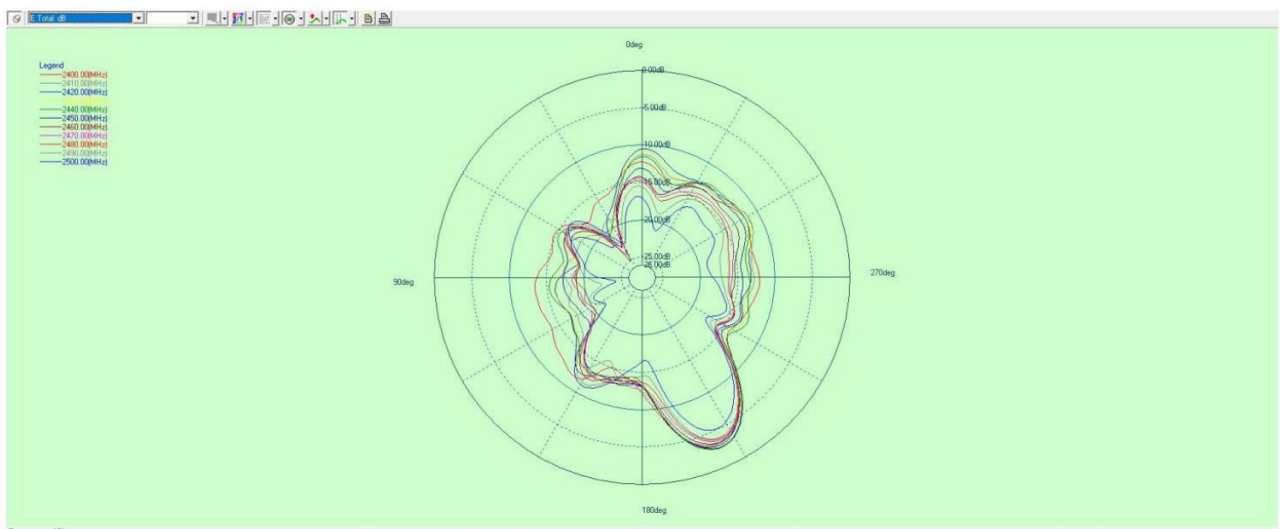


## 2. 2D Radiation Pattern

$\Phi=0^\circ$

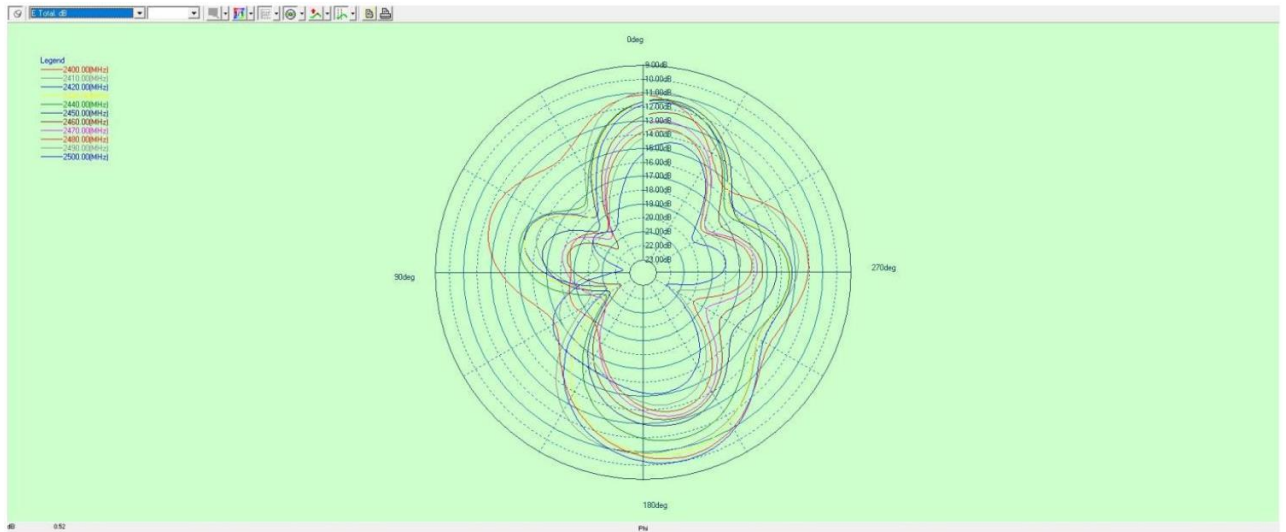


$\Phi=90^\circ$

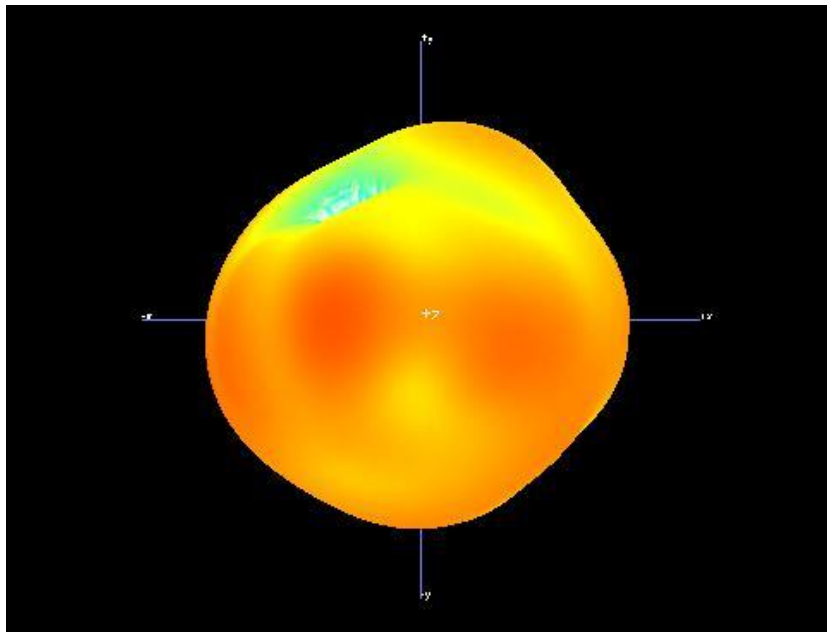




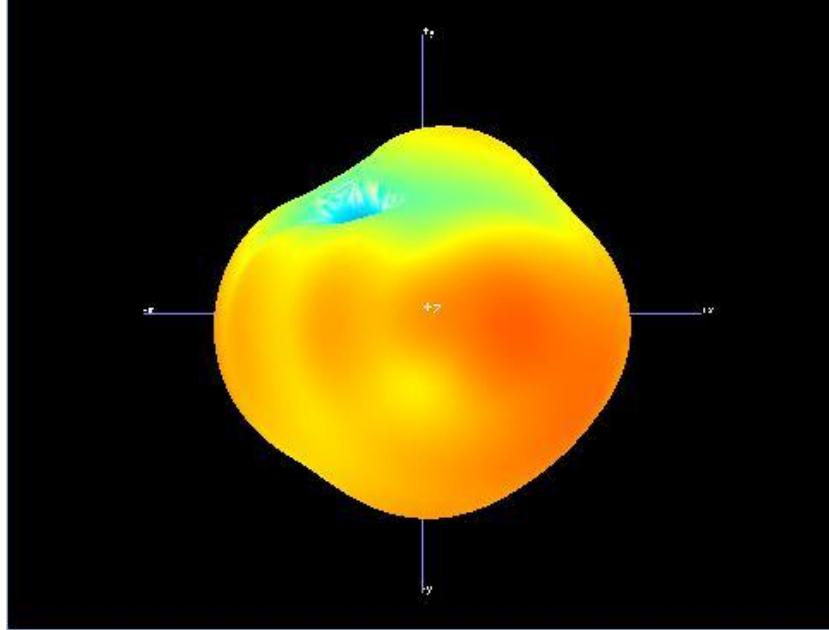
Theta=90°



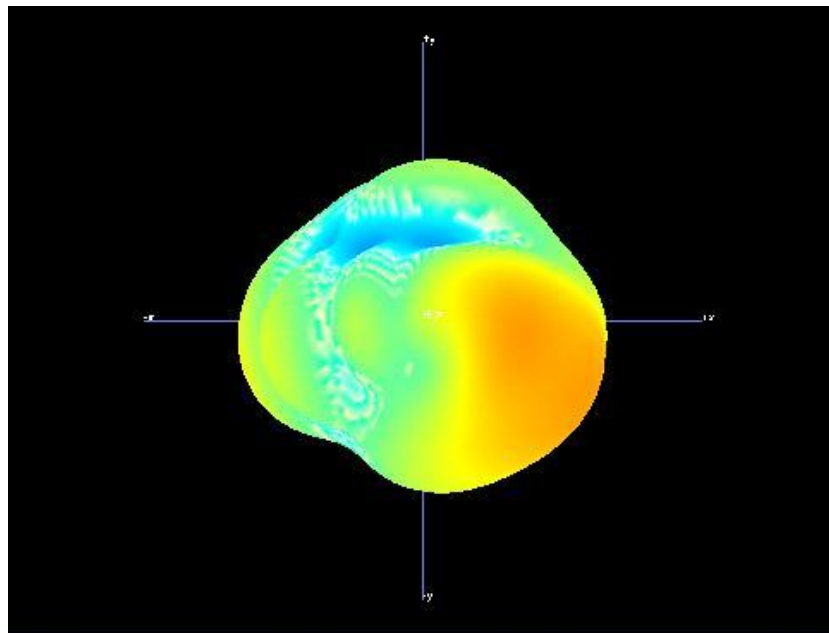
### 3. 3D Radiation Pattern



2400MHz



2440MHz



2480MHz