

EH20 Helmet User Manual

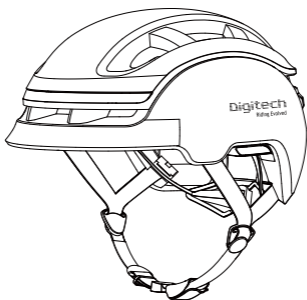


Table of contents

Warning	2
Product Presentation	4
Product Presentation	4
Packing List	4
Wearing Instructions	4
Operation Description	5
Wearing Method	5
Switch on/off	5
Charged	5
Connect Ebike Button	6
Connect New Ebike Button	6
Multi-media Features	6
Indicators	7
Low Battery	7
Connect Bikewise Pro APP	8
Routine Maintenance	9
FAQ	10
Product Parameters	12

Warning

Warning

Considerations

1. The helmet contains electronic parts inside. Please do not take a long ride in the rain although the helmet can prevent the rain from splashing.
2. After the helmet gets wet in the rain, the water droplets might occur in the chimney of tail LED lights. The water droplets will disappear when you put the helmet under the ventilation environment for 1-2 days.
3. The helmet contains the battery of 3.7V/1000mAh. The battery capacity varies with temperature change. The battery life can decay when the helmet is used at low temperatures or below Zero degrees Celsius.
4. Trying to clean the golden colour contacts of the charging plug sheet with metal or hard tools such as blades or tweezers is strictly forbidden. Please use cotton swabs with clean water or alcohol in case of cleaning. Please make sure the charging plug is clean and try while charging the helmet.
5. If the electronic functions do not work, please charge the helmet for 3 hours and then check if it works normally.
6. The built-in battery is forbidden to be disassembled, squeezed, heated or burned. It is also forbidden to use screwdrivers and other sharp devices breaking down or prying apart the battery. The above operations may make the battery caught fire.
7. Please do not place the helmet with sharp objects, avoiding to damage the helmet.
8. Replacement of a battery with an incorrect type that can defeat a safeguard (for example, in the case of some lithium battery types);
9. Disposal of a battery into fire or a hot oven, or mechanically crushing or cutting of a battery that can result in an explosion;
10. Leaving a battery in an extremely high temperature surrounding environment that can result in an explosion or the leakage of flammable liquid or gas; and
11. A battery subjected to extremely low air pressure that may result in an explosion or the leakage of flammable liquid or gas.

Note: To maintain efficient battery life, it is recommended that the helmet be fully charged before any longterm storage (six months to one year).

Warning

Instructions for Use and Care

1. That the helmet can only protect if it fits well and that the buyer should try different sizes and choose the size which feels secure and comfortable on the head.

2. That the helmet should be adjusted to fit the user e.g. the straps positioned so that they do not cover the ears, the buckle positioned away from the jawbone and the straps and buckle adjusted to be both comfortable and firm.

3. How the helmet should be positioned on the head to ensure the intended protection is provided (e.g. that it should be placed so as to protect the forehead and not be pushed too far over the back of the head).

4. That a helmet cannot always protect against injury.

5. That a helmet subjected to a severe impact should be discarded and destroyed.

6. A statement of the danger of modifying or removing any of the original component parts of the helmet other than as recommended by the manufacturer, and that helmets should not be adapted for the purpose of fitting accessories in a way not recommended by the manufacturer.

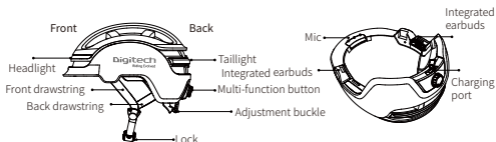
7. This device complies with part 15 of the FCC Rules. Operation is subject to the following two conditions: (1) This device may not cause harmful interference, and (2) this device must accept any interference received, including interference that may cause undesired operation.

Faults: 1. Can not be charged or turn-off normally; 2. The helmet is turn on, but the lights, microphone, speakers etc can not work normally; 3. After power on, it turns off automatically in a short time. Note: Please refer to the quick guide of the specific model for function details.

Product Presentation

Product Brief Presentation

Welcome to the Digitech helmet, this manual will guide you how to use this product. This product is a new type of smart helmet, using smart hardware IOT technology, through the Bikewise Pro App, Digitech smart display network connection, to provide you with a full aspects of smart experience, including warning lights, turn light indicators, voice intercom, call reminders, navigation voice, music play etc.



***Reminder: The picture above is product framework, and the final effect is subject to the actual product.**

Packing List



Helmet : 1pcs



Type C charging cable



Manual 1pcs

Wearing Description



Wrong



Wrong



Correct

Operation Description

Wearing Method



Adjust the length of the drawstring



Leave one-finger gap and check whether the buckle is intact



Straighten the helmet

Switch On/Off

Long press Power for 2 seconds to turn it on. With the headlights flashing briefly and the taillights will turn off after showing a flowing light effect, the voice broadcast begins.

After the ride is over, long press Power for 2 seconds, the taillight is turned out and the voice broadcast powers off.



Charged



1. At the bottom of helmet, it is the TypeC USB charging port. We recommend that it is charged by DC 5V 1A or above.



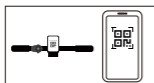
2. When charging, the 4 red lights in the middle of the tail light show the charging status.



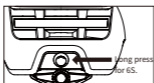
3. The four lights are always on when charging is completed.

Operation Description

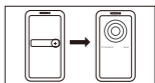
Connect Ebike Button



Open App to scan display's QR code on Ebike to bind Ebike.



Long press power button for 6S, the helmet starts pairing mode.



Open App, it enters the smart equip binding helmet.

Connect New Ebike Button



Enter the helmet setting interface with Bikewise Pro App to unbind, and then press the "connect Ebike button" step to repeat the operation.

Multi-Media Function

Integrated earbuds pairing

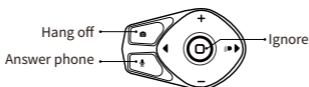
After Bikewise Pro App binding to the helmet, it enters helmet setting page to pair integrated earbuds. After the operation is completed, a voice broadcast (Connected) indicates that the connection with the mobile phone is successful, and the multimedia function can be used.

Music play



Operation Description

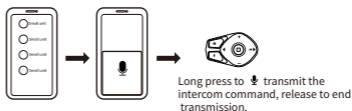
Answer the mobile phone



When phone is coming

Voice intercom

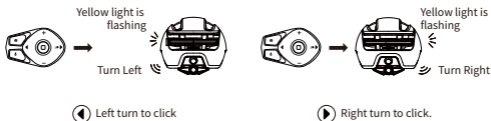
When App entering group mode:



Auto-Light Mode

Turn on the automatic light mode through the Bikewise Pro App, and the module enters the adaptive light mode. Under good light conditions, the light effect display will automatically turn off. At night or in a dark atmosphere, the entire row of taillights will automatically turn on and enter a flashing warning state.

Indicators



Operation Description

Low Battery

When in low battery, voice reminds low power, please charge helmet immediately.



Connect Bikewise Pro App



- Android: Start out “Bikewise Pro” mobile application to connect helmet.
- IOS: Start out “Bikewise Pro” mobile application to connect helmet.

*Only after the connection succeeds, the function of the helmet can be realized. Through the Bikewise Pro App or displays, using the multimedia function to control the left and right indicates etc.

Routine Maintenance

Clean

When cleaning the helmet, please wipe it with a clean soft cloth, because there are electronic components inside, please do not soak in water, please do not wash with hot water, salt water, benzene, thinner and other lotions. The webbing and lining of this helmet can be removed and washed. After washing at room temperature, dry it, and continue to use it after putting on the helmet.

Storage Condition

It is recommend to be stored in a cool and dry place.

Avoid long-term storage in places that are too hot, too humid or too cold, which will not only affect the normal use of the helmet' s electronic components, but also affect the using life of the helmet.

Firmware Upgrade

Digitech will continue to improve and optimize the capabilities of smart hardware, and will provide automatic firmware upgrade. When your Digitech helmet is connected to the Bikewise Pro App, if there is a new firmware upgrade Bikewise Pro App will remind you that you can upgrade the firmware according to the operation guide, please do not shut down during the upgrade process.

App Upgrade

Bikewise Pro will continue to enrich and improve the App functions. When you use the Bikewise Pro App, you can upgrade App.

Replacement Suggestion

The helmet is an outdoor product, and it will be exposed to wind, rain, and sun frequently, so the general helmet replacement cycle should not be longer than 3 years.

FAQ

Question	Solution
Switch on failure	The battery is low, please use it after charging;The ambient temperature is over low (less than -10°C) or over high (more than 45°C), please use this product between-10 ~ 45 °C.
Charge failure	The charging connector is not connected to the power correctly. The charging connector is not connected to the helmet correctly.
Helmet, App and display fail to connect by Bluetooth	Ensure the helmet is turned on, and the mobile Bluetooth function is on, Android mobile provides App location permission. If it cannot be connected automatically, please follow the process mentioned in the pairing section to repair.
No sound from loudspeaker	Check if the helmet is switched on. Check if your mobile phone is on mute mode. Check if the helmet is damaged causing the disconnected wire of loudspeaker.
LED light are off	Under the condition with automatic light mode, the LED light will turn on when the surrounding is dark. Modify LED tail light mode through Bikewise Pro App, check whether the helmet or LED light cover is damaged to cause the LED wiring disconnection.

Product Parameters

Name	Parameter
Helmet Dimension	57-61cm
Product Weight	Approx 420g
Bluetooth	Bluetooth5.3
LED headlight	14pcs single white LED
LED taillight	14pcs super bright multi-color LED
Battery	3.7V/950mAH
Power adapter	User prepare by his own. Conventional mobile phone power adapter (5V)
Charging time	Approx 2.5 hours
Endurance	It' s around 10-12 hours under the state of music playing only. It may affect the battery life of the helmet that the amount of using time in different functions. The capacity of lithium battery will change with the temperature. When it is used in a low temperature surrounding or below 0 °C, the battery life of product will be reduced at different levels.
Loudspeaker	Stereo speakers
Microphone	Noise-canceling microphone
Operating temperature	-10°C to 45°C

Product Parameters

CPSC 1203

EN 1078: 2012+A1: 2012

Shenzhen Digitech Co.,Ltd

Performance standards: CPSC1203:1998, FCCPart 15 Rules



Smart Safety Helmet



Original Design Manufacture
* Shenzhen China

Europe: EN62479:2010,EN301 489-1 V1.9.2 (2011-09) , EN301 489-17 V2.2.1(2012-09),
EN300 328V1.8.1 2012-06,EN 60950:2006+A11:2009+A1:2010+A12:2011

Conformity to the regulation(EU) 2016/425

We Shenzhen Digitech Co., Ltd. declare that the full Declaration of Conformity is available on the Internet at <http://file.riding-evolved.com/20230511/e0817292159a42a8bec86fe452b870a8.pdf> [file.riding-evolved.com]

Notified Body: Kiwa Nederland B.V. with its office located at Wilmersdorf 50,
7327 AC Apeldoorn, The Netherlands. Notified Body No. 0063

Original design manufacturer: Shenzhen Digitech Co., Ltd

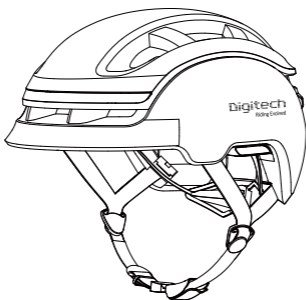
Address: Room305 Building A9 , Tianliao Industrial Zone,Taoyuan Street,
Nanshan,Shenzhen,China,

Postal code: 518000

Website: www.riding-evolved.com

E-mail: info@riding-evolved.com

Important Information and Warranty Card



Important Information and Warranty Card

Please read the Manual before using the product and keep it for future reference.

Introduction and Declaration

Before using a helmet, please read all operating instructions and safety information in this Manual to ensure safe and proper use.

Digitech adheres to a strategy of sustainable development. This Manual (i.e., the Important Information and Warranty Card) will be updated from time to time, therefore, Digitech reserves the right to make changes and improvements to any of the products described herein. The content of the Instructions shall be provided subject to the status of the products being manufactured.

Unless otherwise specified in the applicable law, no explicit or tacit guarantee shall be made to the accuracy, reliability and content of this document.

Digitech reserves all rights. Without the prior written permission from Digitech, it is prohibited to reproduce, deliver, distribute and store the contents of this document in any form. In case any problems are encountered while using this product, please contact our after-sales service for assistance.

Product availability and related software and accessories may vary by region. For details, please consult our local distributors.

The product may contain components and technical software that are controlled by export laws and regulations of China as well as other countries and regions. Any transfer in violation of the law is prohibited.

Safety Precautions

Please read the following simple guidelines. Failure to comply with these guidelines may be dangerous or break the law.

1. Keep the product out of reach of children and pets:

Keep the product and all components out of reach of children and pets.

Children and pets may swallow small parts, which may cause choking or other dangers.

2. Turn on only when safe:

When use of electronic products is restricted or their use will cause interference or danger, please do not turn on the product.

3. Road safety:

Please observe all related local traffic laws and regulations. Road safety should be considered a priority when using the product.

4. Interference:

All wireless devices may be susceptible to interference, which could affect performance.

5. Turn off the helmet near medical equipment:

Hospitals and healthcare facilities may use devices that are sensitive to wireless frequencies. Please follow all regulations.

6. Helmet should be switched off on aircraft:

Please comply with all related restrictions as wireless devices may interfere with aircraft systems.

7. Helmet should be switched off in gas stations:

Please do not use this product in gas stations or in areas near fuels, chemicals, etc.

8. Helmet should be switched off in areas near where blasting is being carried out:

Comply with all related regulations and do not use this product in areas where blasting is in progress.

9. Accessories and batteries:

Use only our approved accessories and batteries as other accessories and batteries may damage the product and be dangerous.

10. Connecting to other devices:

When connecting the product to other devices, read the instructions of the other device for detailed safety instructions. Do not connect incompatible products.

Safety Precautions for Battery Use

-
1. Do not dispose of used batteries in general waste. For areas where there are regulations on recycling and disposal of used batteries, please comply with the related local regulations and help protect the environment.
 2. Do not short circuit the batteries. When a metallic object (such as keys, jewelry, wires, coins or other conductive materials) inadvertently connects the positive and negative terminals of the batteries, a short circuit will occur. A short circuit may damage the battery or the connector, and may result in property damage or personal injury. Please put charged batteries in an appropriate place, paying particular attention to those in your pocket, wallet or other place where there might be metal objects.
 3. Do not throw batteries into a fire or place them in a high temperature environment so as to avoid battery leakage, overheating, explosion or fire.
 4. Do not disassemble, solder or modify the batteries; do not put the battery in locations subject to strong mechanical impact or hit the battery with a hard object, which will cause battery leakage, overheating, explosion or fire.
 5. It is strictly prohibited to disassemble, crush, heat or burn built-in batteries; sharp objects, screwdrivers, etc. are forbidden from piercing or prying open the batteries. These actions may cause the battery to ignite or burn.
 6. If a battery's electrolyte gets into your eyes, there is a risk of blindness. If the electrolyte is accidentally splashed into your eyes, do not rub your eyes. Immediately flush thoroughly with clean water and contact a hospital for treatment; in case a weak battery's electrolyte comes into contact with skin or clothes, wash immediately with soap and clean water, and consult a doctor immediately if necessary.
 7. Do not use the battery for other purposes. Never use a damaged charger or battery. In case of overheating, discoloration, deformation, bulging, leakage and other anomalies that occur when batteries are in use, being charged or in storage, please stop using and replace so as to avoid safety issues.

-
8. Batteries are not waterproof. Do not use or charge a battery in the kitchen, bathroom or other hot and humid location.
 9. When a battery is being charged, its temperature will rise. Please do not put the battery and combustibles (e.g.: bedding, clothing, books, etc.) together in case of fire.

USB Cable Precautions

1. When connecting the USB cable to your helmet, make sure that you are inserting or connecting it with the correct side facing up.
2. Forcibly inserting a USB cable or improperly connecting it will damage the charging port or other parts.

Warning and Important Tips (For Helmets)

1. This helmet is designed especially for use with bicycles. Do not use it with motorcycles, motormounted bicycles or other sports equipment or during other sporting activities.
2. No safety helmet can completely avoid all unforeseen impacts. Yet to achieve the best protective effect, the size of the helmet must be well fitted and make sure to fasten the buckle.
3. When children are climbing or engaged in other activities where it's possible for them to become stuck or be strangled due to the use of the helmet, do not use.
4. Do not make any modifications to the helmet. Use only a towel with mild soapy water or water at room temperature to wipe the helmet clean. Soaking it in water to wash is prohibited. The use of any other solvents, paints or cleaning chemicals may damage the helmet and degrade its protective effectiveness in an accident.
5. If the helmet is subject to a heavy blow (even if it appears undamaged), or in case of structural deformation or deterioration in the helmet due to long-term exposure to high temperatures during storage, please destroy and replace it.

6. Helmets are often exposed to sun and rain. We recommend you destroy and replace it every two years for your own safety; if there's any damage to the helmet, please destroy and replace it.

7. The product's waterproof properties are for short-periods during which it is only splashed with water. Please try to avoid using in the rain so as to prevent damaging the functions.

Other Important Safety Information

1. For your safety, please use original accessories approved by Digitech. Accessories can be purchased from local distributors authorized by Digitech.
2. Do not charge the helmet continuously for more than 12 hours.
3. Unqualified persons must not disassemble this product, its batteries or other accessories. In case of any malfunction in the product, its batteries or accessories, please contact Digitech' s local sales center.
4. When using products with a light, do not shine it into the eyes of people or animals nearby. Flashing lights into the eyes of those in close proximity may cause temporary loss of sight or visual impairment.

Products and Accessories

1. Do not use or store the product in dusty or dirty areas as dust may cause the product to malfunction.
2. Do not use or store the product in very hot areas. High temperatures will shorten the life of electronic devices, damage batteries and warp or melt certain plastics.
3. Do not use or store the product in extremely cold areas. Otherwise, when the ambient temperature is raised to room temperature, moisture will form inside the device, damaging the circuit board.
4. Please avoid dropping, knocking or shaking the product. Rough treatment will damage its internal functions, degrade its protective effectiveness or damage its internal electronic components.

5. Do not keep a fully charged battery connected to a charger for extended periods of time as overcharging may shorten the battery's life.

Environmental Protection Information

Table of Toxic or Hazardous Substances, Elements and Contents.

Environmental Protection Use Period of the Parts:

Product – 3 years;

battery – 5 years;

accessories – 10 years

The Environmental Protection Use Period marked on this product indicates the safe period of use for the product under conditions of use specified in this Manual without toxic or hazardous substance leakage.

Toxic or Hazardous Substances and Elements	Part Name		
	Body	Battery	Accessories
(Pb)	✗	✗	✗
(Hg)	○	○	○
(Cd)	○	○	○
(Cr6+)	○	○	○
(PBB)	○	○	○
(PBDE)	○	○	○

Tips for Using the Warranty Card

By embracing the principle of "The Customer is the Focus", we fully protect your rights. Please note the following information:

1. Please bring your valid warranty certificate and original invoice, which shall be completed by the distributor of the helmet and stamped with the official seal, and may not be altered, otherwise it will be deemed as invalid. The serial number sticker on the helmet shall not be destroyed, otherwise the warranty will be invalidated.
2. If the product is eligible for replacement, only the faulty part(s) may be replaced; if the battery was at fault, only the battery will be replaced; other parts such as the decorative nameplate and packaging materials may not be replaced; Consumable parts should be replaced for a fee.
3. In case of any damage due to reasons unrelated to the quality of the product (i.e. exposure to severe dampness and liquid, damages from drops or falls and improper use, etc.); or any damage to the product due to unauthorized disassembly; or taking to any other repair centers not designated by Digitech; or any product beyond warranty period; Digitech will provide maintenance and repair services and charge an appropriate fee accordingly.
4. Some problems might be incurred by exposure to severe dampness and liquid, severe damages and any alteration or modification. In cases where the product can be used normally before maintenance, but performs abnormally thereafter, it shall be deemed as an unrecoverable fault, for which Digitech will not be responsible for returning the product to its former condition.
5. In order to provide better service for you, please take good care of your warranty card, purchase certificate and maintenance documents.

Warranty Details

I.Warranty Details

1. If there is any discrepancy or omission between the following and any national policy, the national policy shall prevail.
2. The warranty time is 1 year after purchase. Any quality problem can be maintained for free or it can be replaced within 30 days after purchase if resale is available.
3. Digitech bears no responsibility for warranty over other product components. i.e, the Quick Start Guide, Warranty Card, etc.

Warranty Description

The warranty services are only valid under conditions of normal use. In case of any damage caused by reasons unrelated to product quality or any of the following circumstances, warranty services shall not be provided. But paid maintenance may be carried out:

1. The warranty period expires;
2. There is no valid invoice or warranty certificate, unless it can be otherwise proved that the product is within the validity date of the warranty period;
3. The details on the warranty certificate do not match the specific goods or are altered;
4. Any damage caused by use, maintenance or care that contravenes the guidelines of the product's instruction manual;
5. Any damage caused due to disassembly by non- Digitech designated service centers;
6. Any damage caused by force majeure;
7. The product's natural wear and tear, such as on housing, buttons, paint, accessories, etc.
8. Any malfunction, defect or flaw not caused by Digitech.

Note

This equipment has been tested and found to comply with the limits for a Class B digital device, pursuant to part 15 of the FCC Rules. These limits are designed to provide reasonable protection against harmful interference in a residential installation. This equipment generates uses and can radiate radio frequency energy and if not installed and used in accordance with the instructions, may cause harmful interference to radio communications. However, there is no guarantee that interference will not occur in a particular installation. If this equipment does cause harmful interference to radio or television reception, which can be determined by turning the equipment off and on, the user is encouraged to try to correct the interference by one or more of the following measures:

- Reorient or relocate the receiving antenna.
- Increase the separation between the equipment and receiver.
- Connect the equipment into an outlet on a circuit different from that to which the receiver is onnected.
- Consult the dealer or an experienced radio/TV technician for help.

Changes or modifications not expressly approved by the party responsible for compliance could void the user's authority to operate the equipment. This device complies with Part 15 of the FCC Rules. Operation is subject to the following two conditions:

- (1) this device may not cause harmful interference;
- (2) this device must accept any interference received, including interference that may cause undesired operation.

Warning

This helmet is intended for use for biking, skateboarding, inline skating. Not for motor vehicle use. The helmet is intended to reduce the risk of injuries to the head when an accident happens but it cannot protect against every kind of injuries. Do not make any changes to the helmet that might impair its protective capacity. Never use stickers, glue, paint or anything else that might impair the protective capacity of the helmet. The helmet should only be used for activities mentioned above and not for climbing trees or other activities where the helmet could fasten. Choose a size that fits comfortably on the head and adjust the chinstrap so that the helmet sits securely if an accident happens. The helmet should be adjusted to fit the user. The straps should be positioned so that they do not cover the ears, the buckle should be positioned away from the jawbone, the straps and buckle should be adjusted to be both comfortable and firm. The helmet should be positioned in the right way on the head to ensure the intended protection is provided. It should be placed so as to protect the forehead and not be pushed too far over the back of the head. Make sure the buckle is positioned under the chin. Inspect the helmet regularly and if you find deep scratches in the shell you should discard the helmet as there is a risk that the shell could crack in an accident. A very strong impact in connection with an accident could have damaged the inner impact absorbing layer. Even though the damage is not visible from outside the helmet should be discarded. Do not use the helmet if you find any damages on it.

Instructions For Use And Care

1. No helmet can protect the wearer against all possible impacts.
2. The helmet is designed to be retained by a strap under the lower jaw.
3. To be effective, a helmet must fit and be worn correctly. To check for correct fit, place helmet on head and make any adjustments indicated. Securely fasten retention system. Grasp the helmet and try to rotate it to the front and rear. A correctly fitted helmet should be comfortable and should not move forward to obscure vision or rearward to expose the forehead.
4. No attachments should be made to the helmet except those recommended by the helmet manufacturer.
5. The helmet is designed to absorb shock by partial destruction of the shell and liner. This damage may not be visible. Therefore, if subjected to a severe blow, the helmet should be destroyed and replaced even if it appears undamaged.
6. The helmet may be damaged and rendered ineffective by petroleum and petroleum products, cleaning agents, paints, adhesives and the like, without the damage being visible to the user.
7. A helmet has a limited lifespan in use and should be replaced when it shows obvious signs of wear.
8. This helmet should not be used by children while climbing or doing other activities where there is a risk of hanging or strangulation if the child gets trapped whilst wearing the helmet.
9. Use only mild soaps and warm water to clean the helmet, straps and pads. DO NOT use chemicals, solvents or paints.

Disclaimer

Digitech cannot and does not warrant that an individual who suffers, a collision,fall or other blow to the head or person while wearing.

This helmet equipped with the digitech bike helmet will never suffer any concussion or other injuries . User acknowledges that no helmet(including this helmet)can protect user from any and all injuries and user assumes all risks, including all risks of bodily injury or death, arising out of user' s participation in athletic,recreational and other activities while wearing this helmet, to the extent permitted by applicable law,digitech expressly disclaims all warranties of any kind, express or implied with respect to this helmet,other than those expressly made by digitech bike helmet.

Administrative Regulations on Low Power Radio Waves Radiated Devices warning

Article 12

Without permission granted by the NCC, any company, enterprise, or user is not allowed to change frequency, enhance transmitting power or alter original characteristic as well as performance to a approved low power radio-frequency devices.

Article 14

The low power radio-frequency devices shall not influence aircraft security and interfere legal communications; If found, the user shall cease operating immediately until no interference is achieved.

The said legal communications means radio communications is operated in compliance with the Telecommunications Act.

The low power radio-frequency devices must be susceptible with the interference from legal communications or ISM radio wave radiated devices

FCC Compliance Statements

This device complies with Part 15 of the FCC Rules. Operation is subject to the following two conditions:

- (1) this device may not cause harmful interference, and
- (2) this device must accept any interference received, including interference that may cause undesired operation.

Caution: Changes or modifications not expressly approved by the party responsible for compliance could void the user's authority to operate the equipment.

Note: This equipment has been tested and found to comply with the limits for a Class B digital device, pursuant to Part 15 of the FCC Rules. These limits are designed to provide reasonable protection against harmful interference in a residential installation. This equipment generates, uses and can radiate radio frequency energy and, if not installed and used in accordance with the instructions, may cause harmful interference to radio communications. However, there is no guarantee that interference will not occur in a particular installation.

If this equipment does cause harmful interference to radio or television reception, which can be determined by turning the equipment off and on, the user is encouraged to try to correct the interference by one or more of the following measures:

- Reorient or relocate the receiving antenna.
- Increase the separation between the equipment and receiver.
- Connect the equipment into an outlet on a circuit different from that to which the receiver is connected.
- Consult the dealer or an experienced radio/TV technician for help.

RF Exposure Compliance

This equipment complies with FCC radiation exposure limits set forth for an uncontrolled environment. This transmitter must not be co-located or operating in conjunction with any other antenna or transmitter.

Smart Safety Helmet



Original Design Manufacture
* Shenzhen China

Original design manufacturer: Shenzhen Digitech Co., Ltd

Address: Room305 Building A9 , Tianliao Industrial Zone,Taoyuan Street,
Nanshan,Shenzhen,China,

Postal code: 518000

Website: www.riding-evolved.com

E-mail: info@riding-evolved.com

Warranty voucher is when the product appear quality problem, the consumer enjoys the certificate of warranty right.

Customer Name		SN	
Contact Tel:		Model No.	
E-mail			
Date Of Purchase		Distributor Name	
City		Distributor Tel	
Invoice No		Distributor Add	

Maintenance Center Signature and Seal			
Fault Treatment			
Fault Description			
Maintenance Sites			
Maintenance No.			
Maintenance Date			