

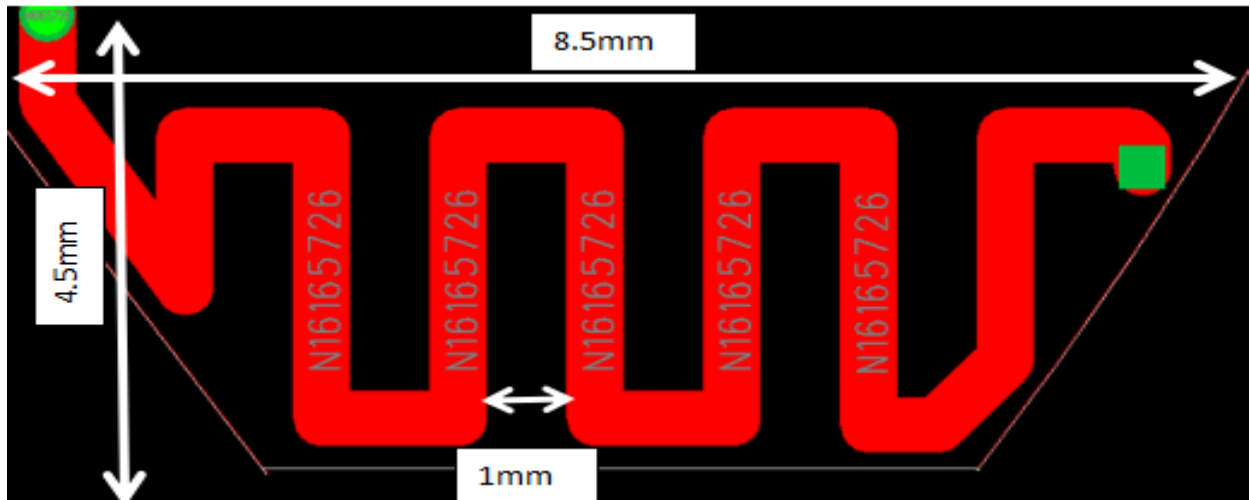
Inverted F Antenna Specification

Summary

| | | | | | | |
|----------------------|---------------------------------|---------|---------|----------|---------|---------|
| ITEM | ANT SPEC | | | | | |
| Model Name | 2.4G ANT | | | | | |
| Center Frequency | Horizontal | | | Vertical | | |
| | 2400MHz | 2400MHz | 2500MHz | 2400MHz | 2400MHz | 2500MHz |
| | -8.46 | -8.46 | -10.82 | -9.06 | -9.7 | -10.58 |
| MAX. Gain | -8.46 | | | | | |
| Polarization | Horizontal and Vertical | | | | | |
| Azimuth Beam Pattern | Omni-directional | | | | | |
| Impedance | 50 Ohm | | | | | |
| Antenna Length | 38.20mm | | | | | |
| Manufacture | ZHUHAI JIELI TECHNOLOGY CO.,LTD | | | | | |

Address: 333 Kexing Road, Xiangzhou District, Zhuhai City

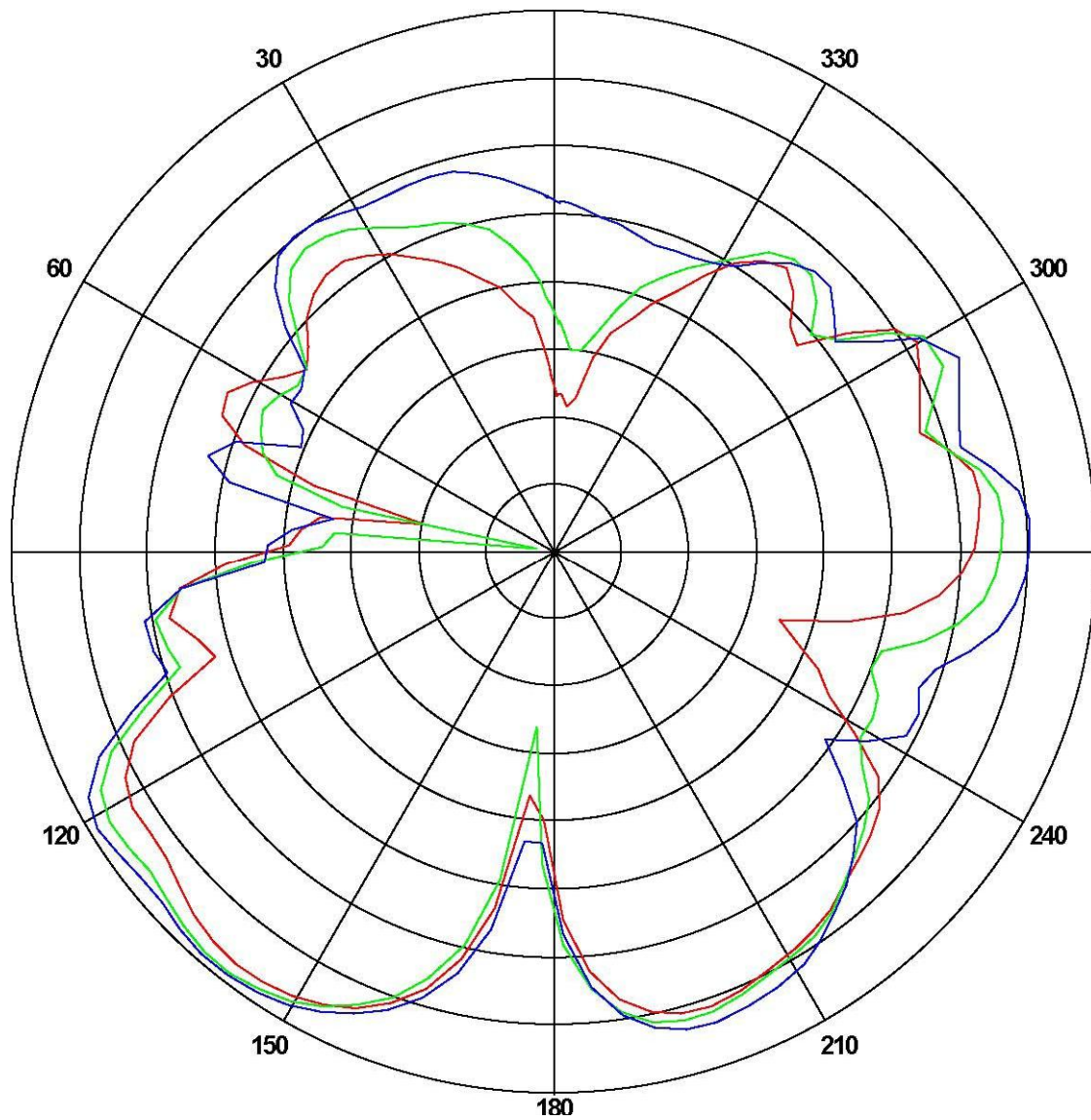
Antenna Photo & Length (mm)



Horizontal: 2400 MHz 2450 MHz 2500 MHz

Power (dBm)

Max: 0 Min: -40 Scale: 5/div

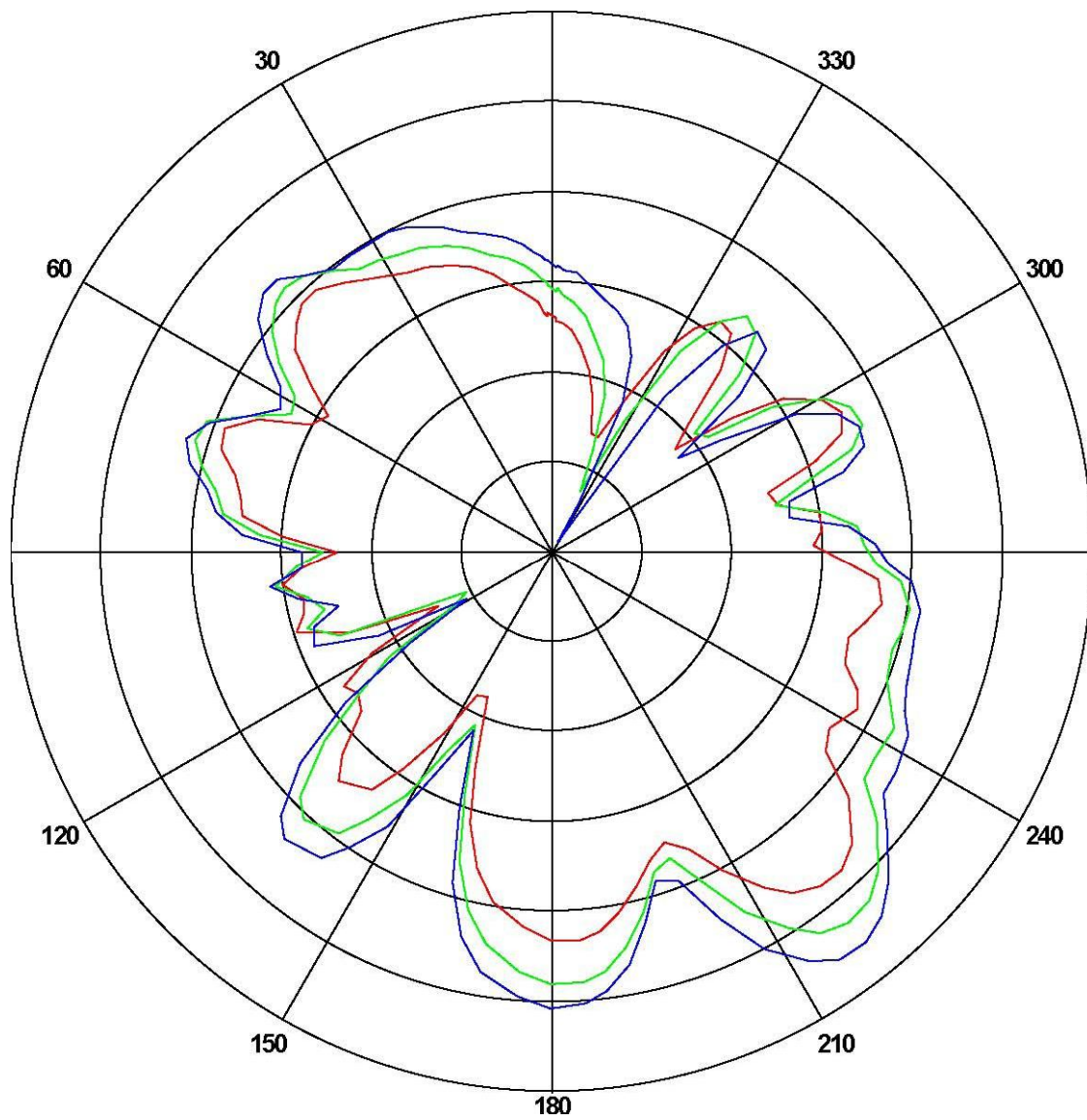


| Frequency (MHz) | Gain(dB) | | |
|-----------------|----------|----------|----------|
| | Max | Min | Avg |
| 2400 | -8.46 | -30.0815 | -8.48713 |
| 2450 | -8.46 | -38.5605 | -7.88012 |
| 2500 | -10.82 | -24.0318 | -6.79139 |

Vertical: 2400 MHz 2450 MHz 2500 MHz

Power (dBm)

Max: 0 Min: -30 Scale: 5/div



| Frequency (MHz) | Gain(dB) | | |
|-----------------|----------|----------|----------|
| | Max | Min | Avg |
| 2400 | -9.06 | -24.1420 | -13.0295 |
| 2450 | -9.7 | -26.5836 | -10.6700 |
| 2500 | -10.58 | -30.4301 | -9.70536 |

ANT Test Labs: Attestation of Global Compliance Co., Ltd.