

SMD CERAMIC ANTENNA

Data Sheet

HZ3216WA02

CA-2450-31-A

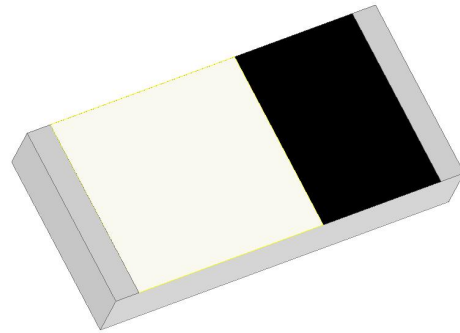
For 2400-2484MHz 3.2x1.6mm [EIA1206]

Manufacturer: Qixin Microelectronics Co., Ltd

Address: 103, Building 54, Dayun Software Town, Hao Community,
Yuanshan Street, Longgang District, Shenzhen, China

Feature

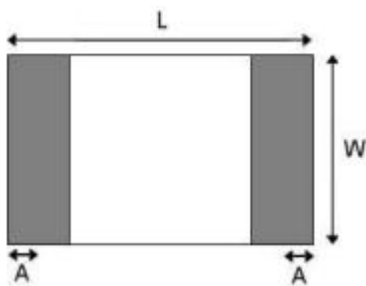
- Light weight, compact
- Wide bandwidth, low cost
- Built-in antenna with high gain



Application

- Bluetooth
- IEEE802.11g/b
- Zigbee systems
- etc...

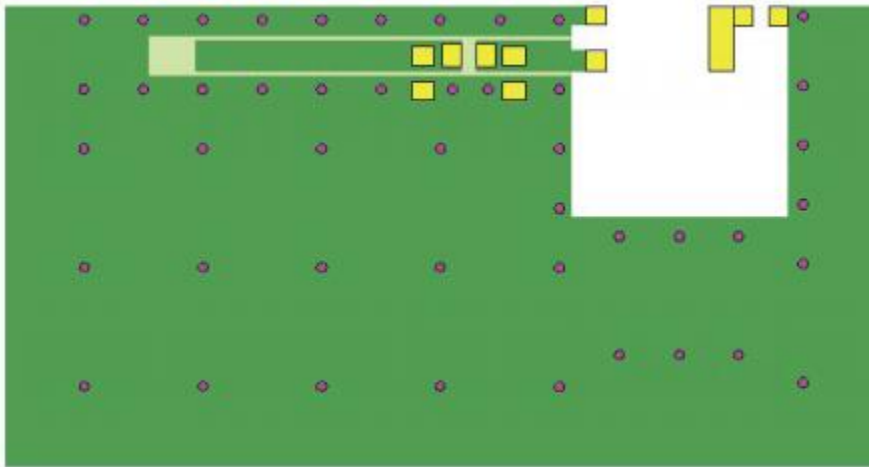
Shapes And Dimensions Dimensions in mm



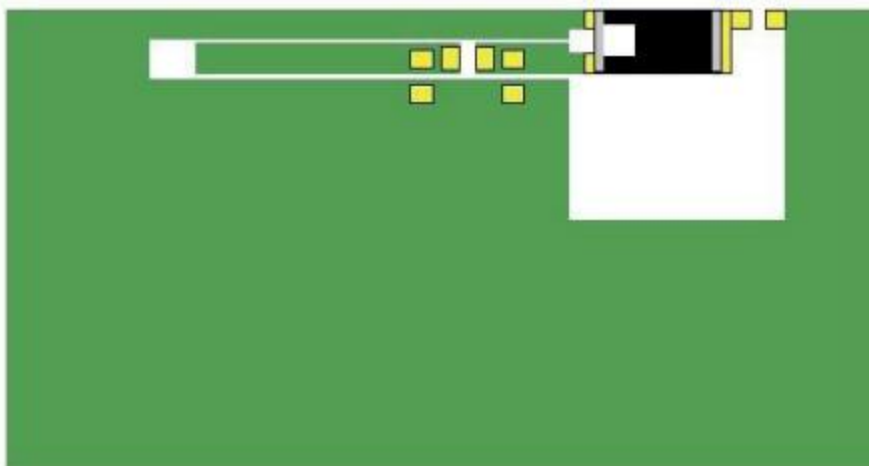
L	W	A	H
3.10±0.10	1.55±0.10	0.40±0.20	0.55±0.1



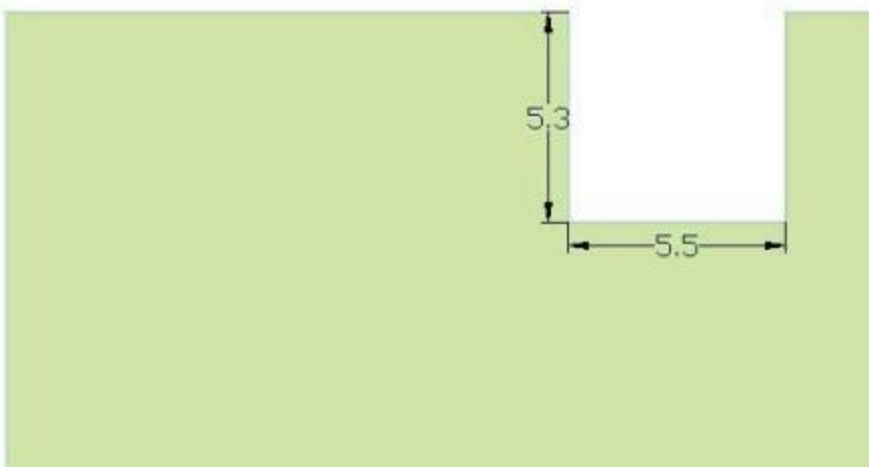
■ Evaluation Board



- ANT
- PAD
- TOP
- BOTTOM
- VIA



- ANT
- PAD
- TOP
- BOTTOM

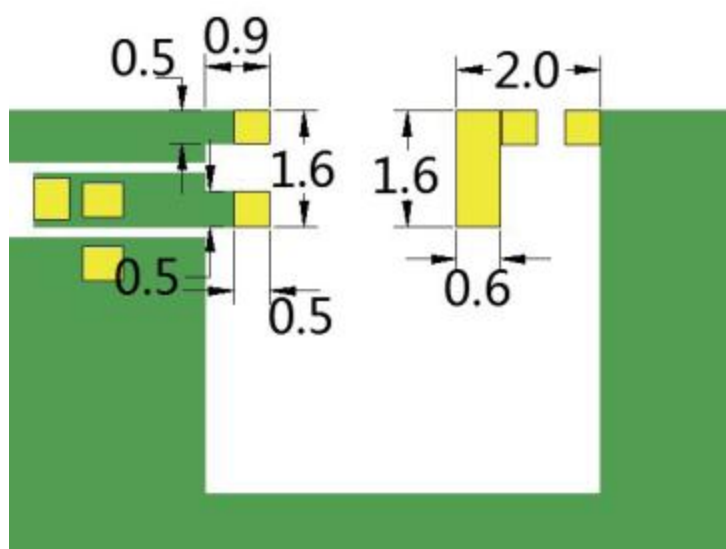


Electrical Characteristics per line(TA=25°C)

Parameter	Specification	Units
Frequency Band	2400~2483	MHz
Polar ization	Line	
* Peak Gain	2.67	dBi
* Efficiency	72.30	%
Im pendance	50	Ω

■ Part Numbering System

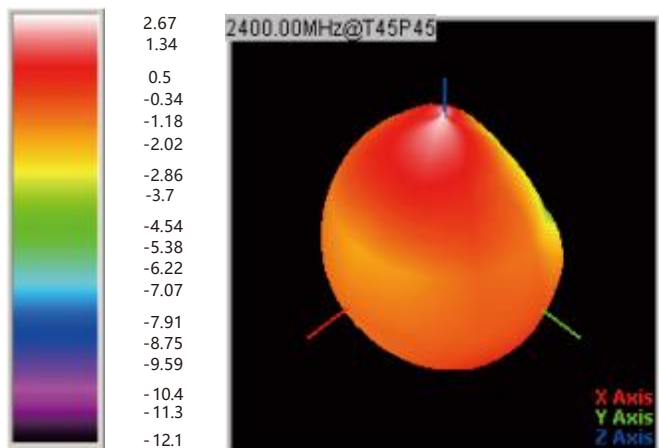
CA - 2450 - 31 - A
 Material Frequency Size Type



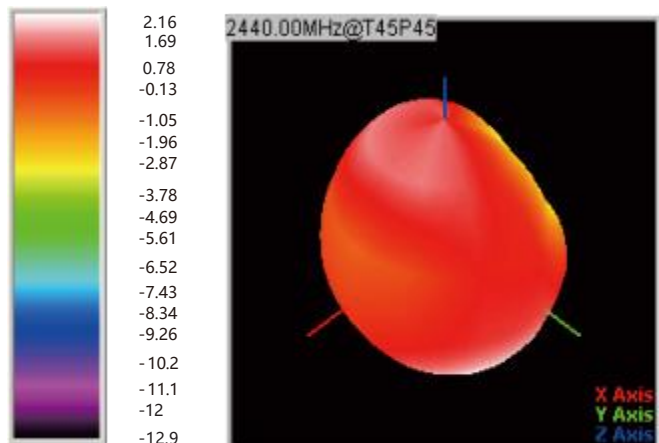
Radiation Patterns

2.4GHz WLAN BAND

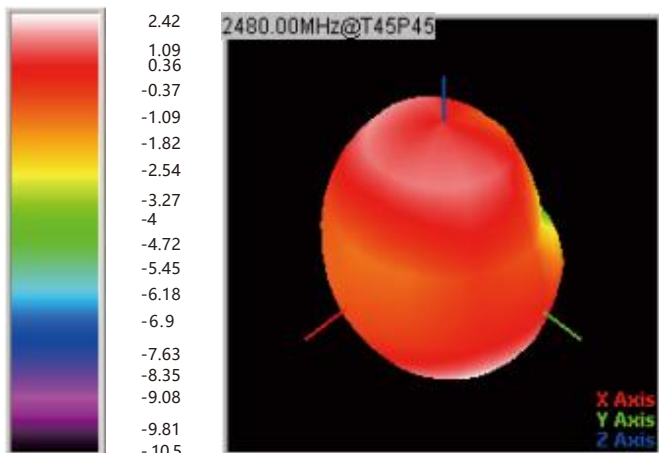
3D Gain Pattern (2400 MHz)



3D Gain Pattern (2440 MHz)



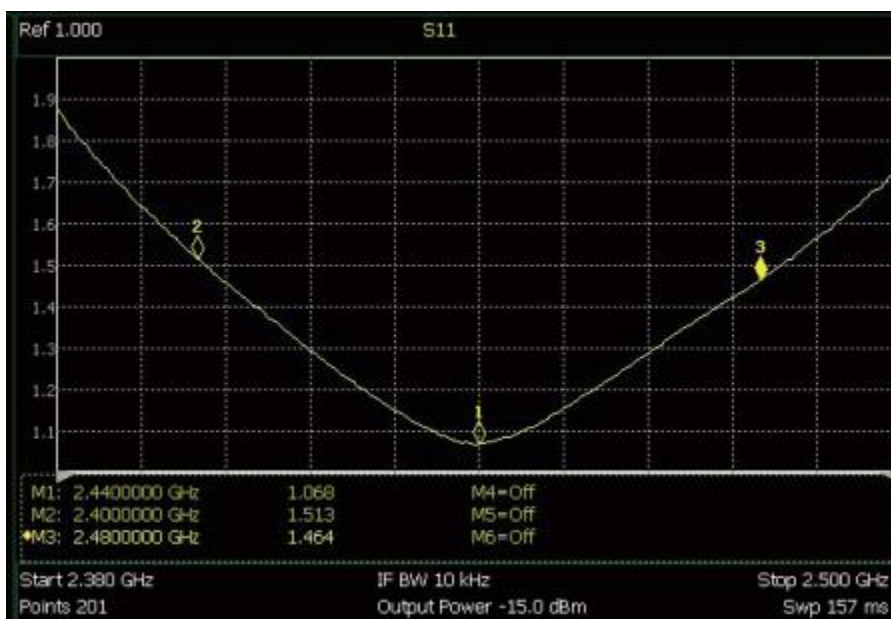
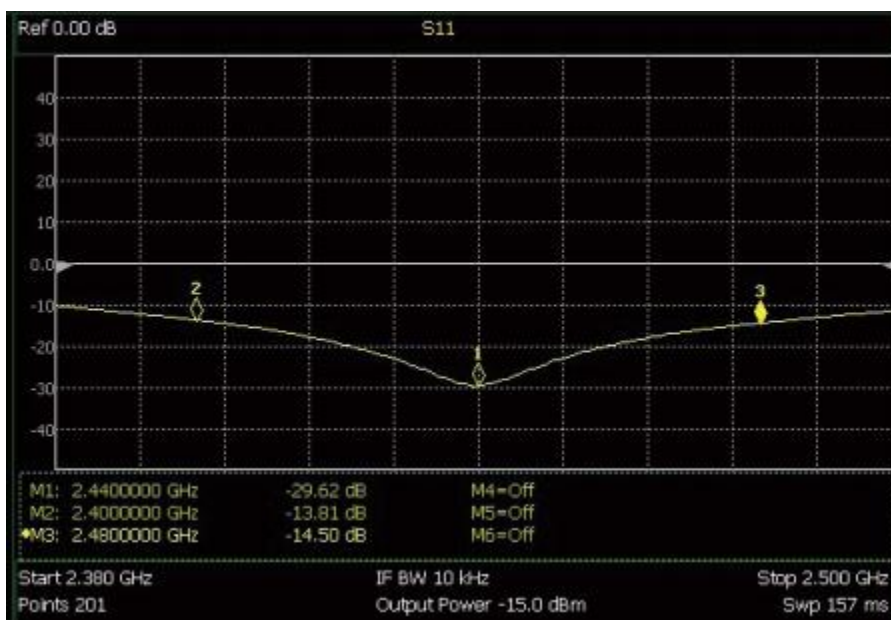
3D Gain Pattern (2480 MHz)



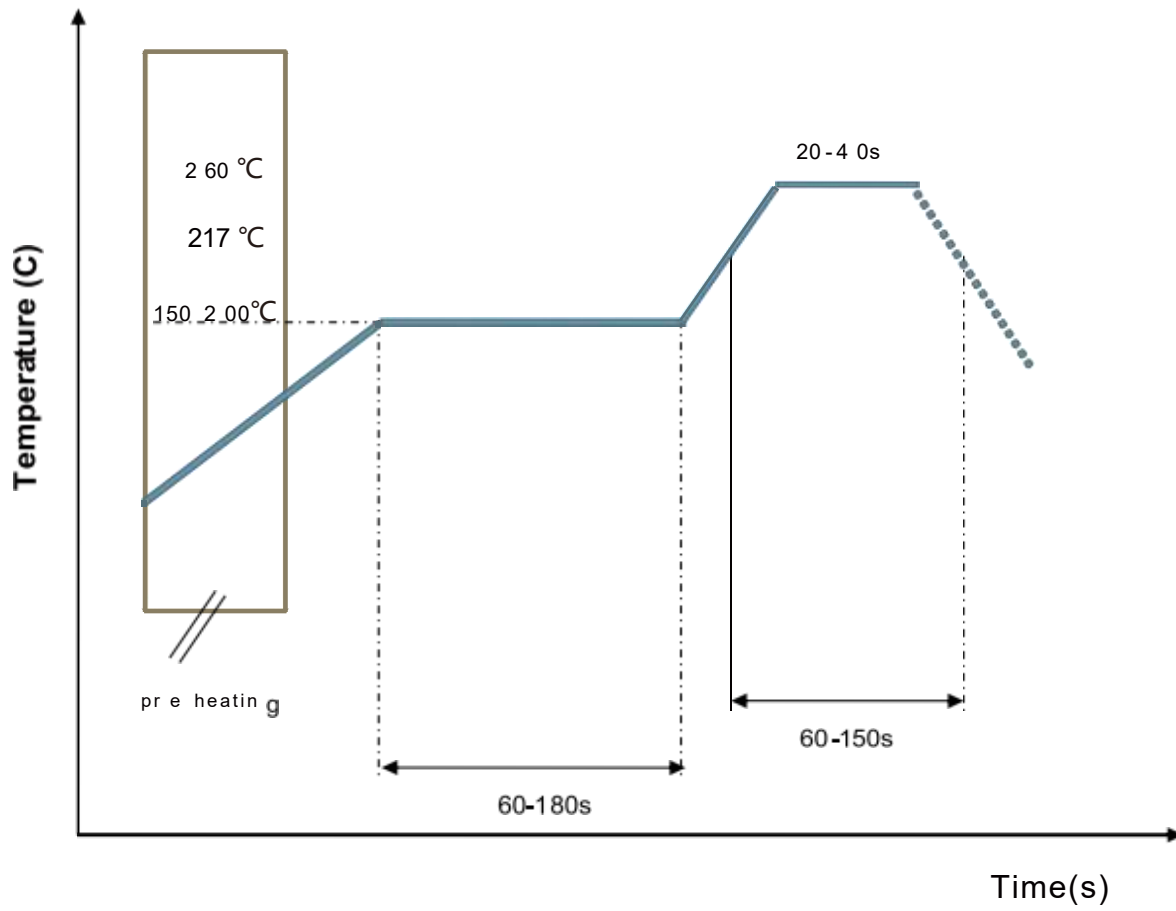
Freq (MHz)	Effi (%)	Gain (dBi)
2400	74.8	2.67
2410	72.59	2.54
2420	71.6	2.25
2430	70.29	2.07
2440	71.23	2.16
2450	72.3	2.37
2460	71.04	2.52
2470	65.95	2.35
2480	64.42	2.42
2490	62.59	2.31
2500	60.01	2.07

■ Frequency Characteristics

□ EFFICIENCY AND VSWR

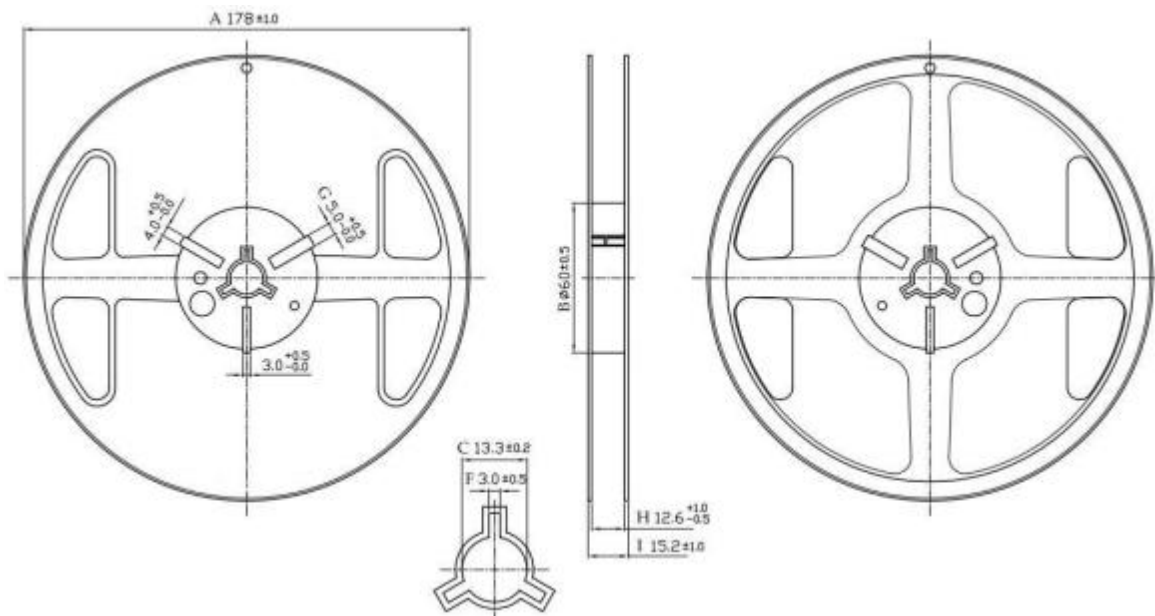


■ RECOMMENDED REFLOW PROFILE

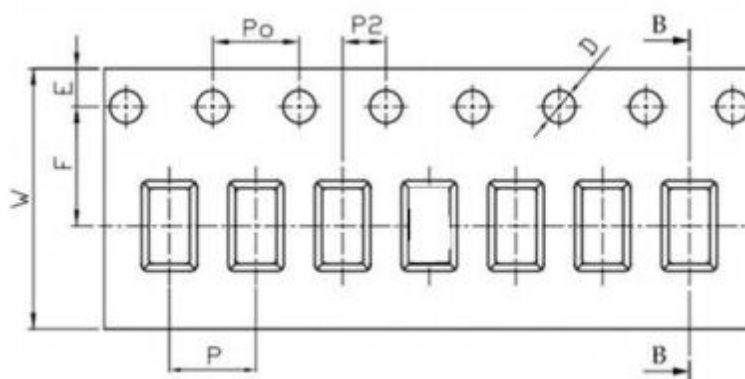


■ Packaging Style

□ REEL DIMENSIONS



□ TAPE DIMENSIONS



Feature	Specifications	Tolerances
W	8.00	±0.30
P	4.00	±0.10
E	1.75	±0.10
F	3.50	±0.10
P2	2.00	±0.10
D	1.50	+0.10 -0.00
Po	4.00	±0.10
10Po	40.00	±0.20

Quantity:5000pieces per 7 reel