

UCN3730 Antenna Specification

- **BLE Technology Parameters**

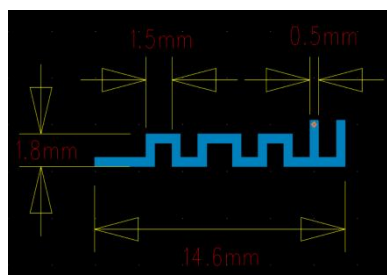
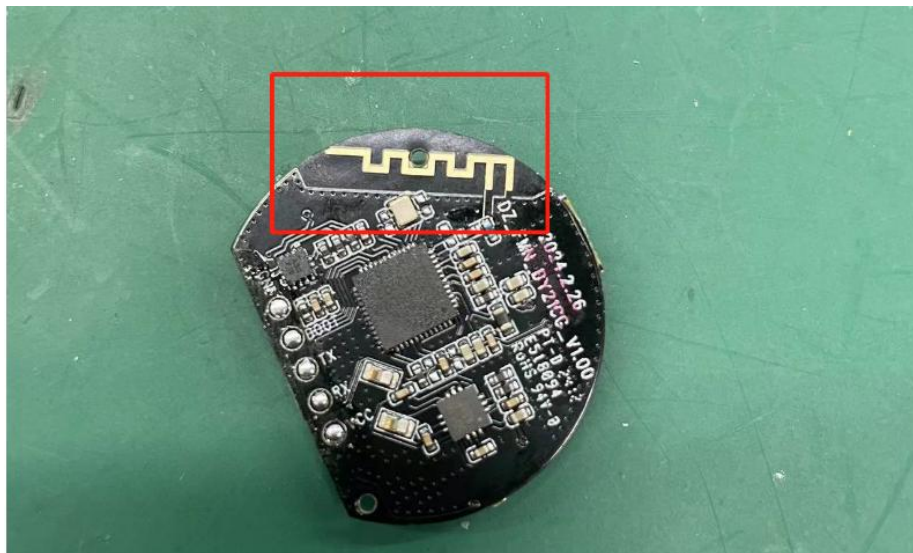
BLE Frequency Range: 2400MHz-2500MHz

BLE antenna type: PCB antenna(IFA antenna)

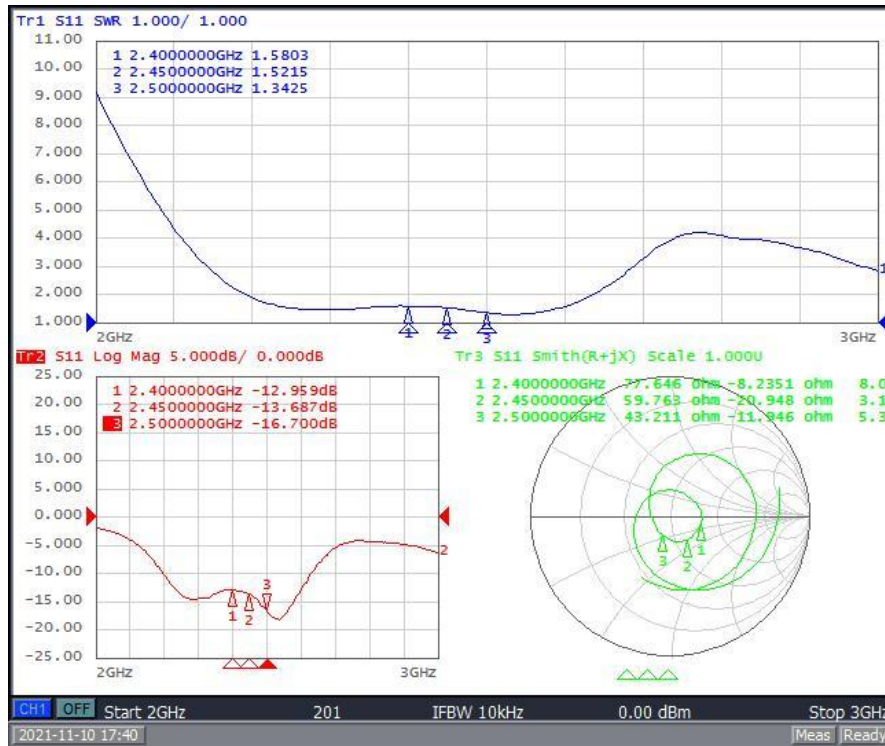
Operating Humidity: 95% R.H.MAX

Temperature Rating: $-40^{\circ}\text{C} \sim +85^{\circ}\text{C}$

- **BLE Antenna Photo and Dimension**



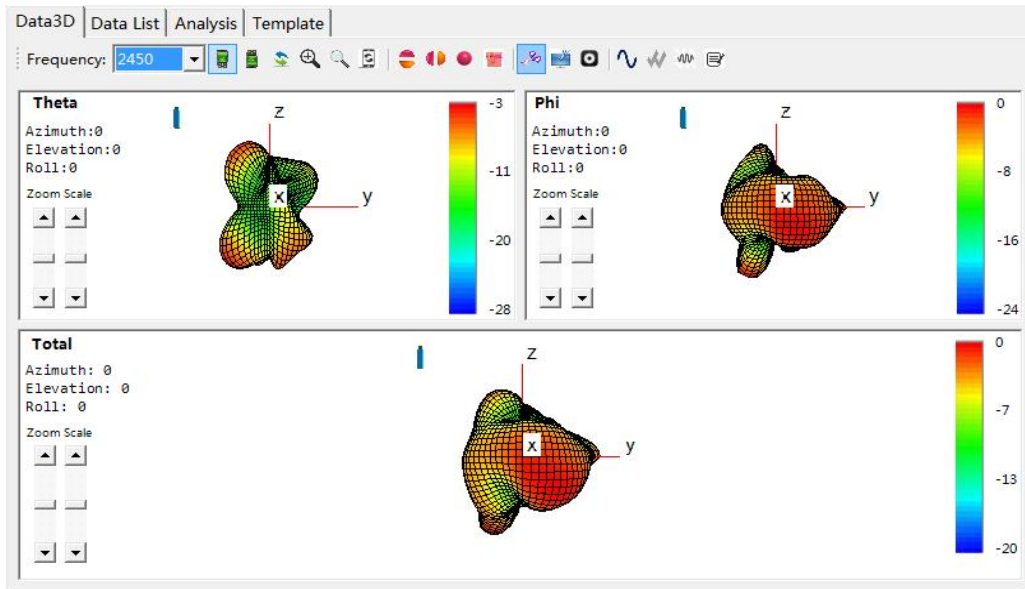
- BLE VSWR/Return Loss/Smith



- BLE Efficiency And Gain

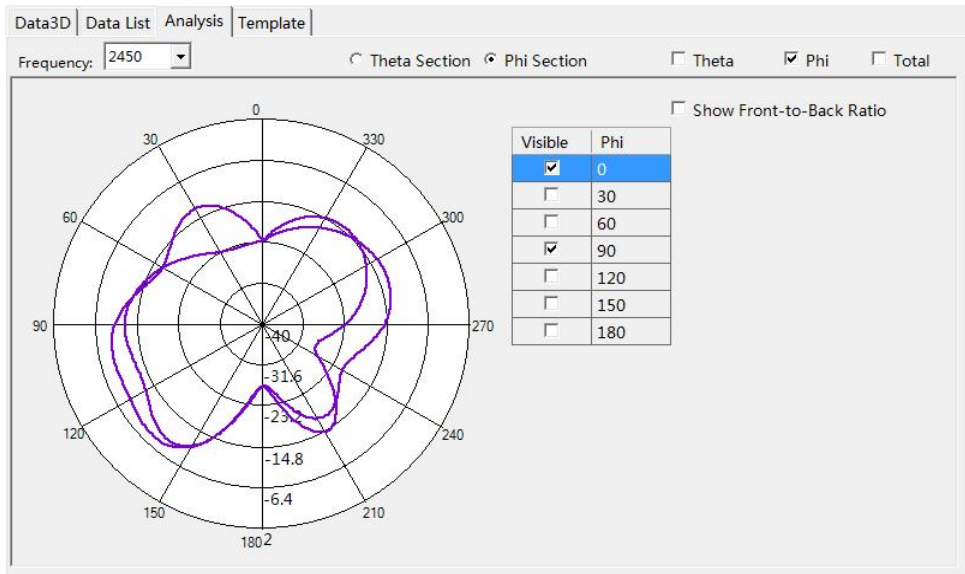
Frequency (MHz)	Efficiency (%)	Peak gain (dBi)
2400	34	0.41
2410	33	0.10
2420	33	0.04
2430	32	-0.05
2440	30	-0.37
2450	30	-0.30
2460	31	0.14
2470	32	0.83
2480	32	1.24
2490	34	1.59
2500	35	1.77

- **BLE 3D Pattern**



- **BLE 2D Pattern**

-



Beijing Onmicro Electronics Co., Ltd.
 5th. Floor, No.1 Building, No.1 Shangdi No.7 Street, Hai Dian District, Beijing, China