

FW2 10 Inch Wall Mounted Oscillating Fan-FW2 USER MANUAL



Always here to help you
For any questions or any help, please shoot a message to support@lmo-it.com

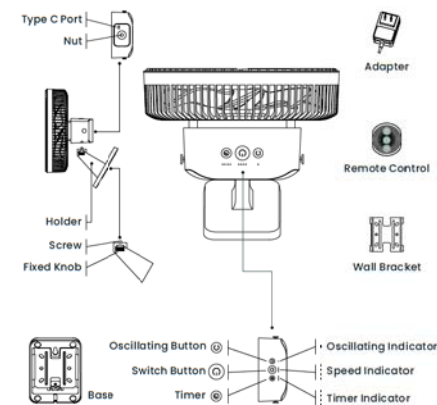
PACKAGE CONTENT

1*Fan(2.24lb/1020g)	1*Wall Bracket
2*Nails	1*Adapter(1.8m/5.9feet)
2*Fixing Strip	1*Superglue
1*Remote Control	1*Instructions
1*Base	1*Holder

SPECIFICATIONS

Product Name	10 Inch Wall Fan -FW2
Main Material	ABS Plastic
Input	DC12V1A
Output	12V/1.0A
Rated Power	12 W
Oscillating Degree	90°
Vertical Tilt Degree(manual)	60°
Size Information	8.6*9.8*11 inches/ 218*250*280mm
Timer(hours)	0.5-1.5-4-8
RPM	600-1000-1200-1380R/min

PRODUCT DETAILS



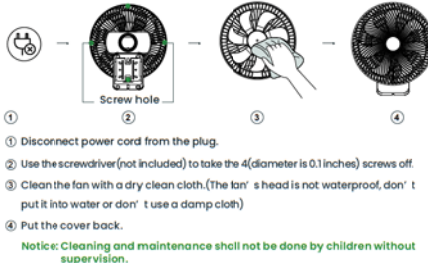
BUTTON CONTROL

1	• Cycle in Low-Mid-High-Super-Off) • Note: Long press to turn it off when this fan is running.
2	• Oscillating(ON/OFF)
3	• Cycle in 0.5-1.5-4-8 hours

HOW TO INSTALL



HOW TO CLEAN



TROUBLE SHOOTING

Question	Possible Reason	Suggested solution
Not working No power	No power	Check the power supply
	Power core, plug or socket damaged or not connected	Check the status of plug and socket are well connected
		Check if the voltage of power supply is too high/low
	Abnormal voltage	Check the power plug and socket
		Check if the socket overload or extend socket damaged

ATTENTION

- If the supply cord is damaged, it must be replaced by the manufacturer, its service agent or similarly qualified persons in order to avoid a hazard.
- Do not cover the appliance by clothes or other object when operating to avoid overheating or motor jam.
- Do not use the power supply with power/voltage not match with this appliance. Unplug & well stored the appliance if not in use.
- Stay away from the high temperature environment or nearby the stove. Otherwise, the operation of this appliance may be affected.
- Do not touch the supply cord and mains to avoid electric shock. Do not pull the supply cord to lift or move this appliance.
- The appliance should not be immersed when cleaning after used.
- Keep out of reach of the children. Children are not allowed to operate.
- It is intended to be used in household only.
- Do not disassemble any part of this appliance. Otherwise, warranty would become ineffective.
- Do not modify this appliance or in conjunction use with other instruments to avoid dangerous.
- For your safety, please do not put fingers or any foreign objects into the fan.

*This appliance is not intended for use by persons (included children) with reduced physical, sensory or mental capabilities, or lack of experience and knowledge, unless they have been given supervision or instruction concerning use of the appliance by a person responsible for their safety.

*Do not place this appliance in the following environment:
- Very moist place like basement.
- Place exposed to direct sun light or rain.
- Place for storage explosive materials.
- Extremely hot or cold place.

*Please contact our customer service center for further assistance.

WARRANTY

To ensure that we meet your needs, one year warranty is included from the purchase date for any defective products. The incorrect human operation, including disassembling, burning, soaking and dropping are not covered under warranty. Please write to support@lmo-it.com for further assistance.

FCC Statement

This device complies with part 15 of the FCC rules. Operation is subject to the following two conditions: (1) this device may not cause harmful interference, and (2) this device must accept any interference received, including interference that may cause undesired operation.

Caution: Changes or modifications not expressly approved by the party responsible for compliance could void the user's authority to operate the equipment.

NOTE: This equipment has been tested and found to comply with the limits for a Class B digital device, pursuant to part 15 of the FCC Rules. These limits are designed to provide reasonable protection against harmful interference in a residential installation. This equipment generates uses and can radiate radio frequency energy and, if not installed and used in accordance with the instructions, may cause harmful interference to radio communications. However, there is no guarantee that interference will not occur in a particular installation. If this equipment does cause harmful interference to radio or television reception, which can be determined by turning the equipment off and on, the user is encouraged to try to correct the interference by one or more of the following measures:

- Reorient or relocate the receiving antenna.
- Increase the separation between the equipment and receiver.
- Connect the equipment into an outlet on a circuit different from that to which the receiver is connected.
- Consult the dealer or an experienced radio/TV technician for help important announcement

Radiation Exposure Statement

The device has been evaluated to meet general RF exposure requirement. The device can be used in portable exposure condition without restriction.