

CHARGE YOUR STANDBANK™

Charge your StandyBank by connecting the included cable to your powerbank using the USB-C charge port and a USB-C power source.* The current power level will display on LED lights. Lights will continue to flash while the powerbank is charging. When fully charged, all the LED lights will be on to indicate charging is complete.

*Wall/car charger not included.

WIRELESS CHARGING

When charging a MagSafe iPhone, charging begins automatically upon connection. To charge other devices, press the power button once to turn StandyBank on. When your device is fully charged, disconnect from StandyBank. To turn StandyBank off, press the power button twice or it will automatically turn off after 30 seconds.

WIRED CHARGING

Connect your device and your StandyBank using a USB-C cable.* Start by connecting the USB-C tip into your StandyBank and the other compatible tip into your device. Your device will start charging automatically. Once your device is fully charged, disconnect from the powerbank. To turn StandyBank off, press the power button twice or it will automatically turn off after 30 seconds.

*USB-C to USB-C cable included.

LED INDICATOR:

1. There are total 5 LED lights, including 4 white LEDs and 1 blue & green dual color LED.
2. The 4 white LEDs indicate battery level. Another LED lights up green to indicate fast charging and blue light to indicate wireless charging.
3. The blue and green lights simultaneously indicate that the wireless charging has entered fast charging mode.
4. The blue light flashes rapidly, indicating an abnormal FOD (foreign object detected).
5. The white LED flashes during charging, displaying the current battery level.

NOTE:

1. Before use, please check your phone is suitable for wireless charging or not. The charging device must comply with Qi wireless charging standards before it can be used.
2. Magnetic wireless charger is only suitable for iPhone 12 series and above; iPhone 8 thru iPhone 11 series and Android phones only support wireless charging.
3. When wireless charging do not use a phone case thicker than 2mm, otherwise wireless charging will not be workable.
4. It is recommended that you charge your device in environments with temperature below 25 °C / 77 °F.
5. When using wireless charging the protective phone case and position of your device on the wireless charger will affect the charging speed. The farther away from the center of the wireless charger, the slower the charging speed will be.

IMPORTANT SAFETY INSTRUCTIONS:

1. Store the product in a cool and dry place.
2. **WARNING:** Do not exposed to excessive heat such as sunshine or fire. Do not use the product in an extremely high temperature/moist environment, or with corrosive liquid, to avoid explosions or electrical leakage caused by circuit damage.
3. Operating temperature should be between 0° C to 35° C / 32°F to 95° F.
4. Do not place metal/cards or other foreign objects on the phone or protective case, otherwise it will cause wireless charging.
5. Do not disassemble, impact, squeeze, or put this product into fire, otherwise it may cause electric shock and fire.
6. Please keep this product out of reach of children.
7. Disposal of a battery into fire or a hot oven, or by mechanically crushing or cutting can result in an explosion.
8. Do not clean this product with harmful chemicals or detergents.
9. Misuse, dropping, or excessive force may cause product damage.
10. A battery under extremely low air pressure may cause an explosion or the leakage of flammable liquid or gas.

This device complies with part 15 of the FCC Rules. Operation is subject to the following two conditions: (1) This device may not cause harmful interference, and (2) this device must accept any interference received, including interference that may cause undesired operation.

FCC warning:

Any Changes or modifications not expressly approved by the party responsible for compliance could void the user's authority to operate the equipment.

Note: This equipment has been tested and found to comply with the limits for a Class B digital device, pursuant to part 15 of the FCC Rules. These limits are designed to provide reasonable protection against harmful interference in a residential installation. This equipment generates uses and can radiate radio frequency energy and, if not installed and used in accordance with the instructions, may cause harmful interference to radio communications. However, there is no guarantee that interference will not occur in a particular installation. If this equipment does cause harmful interference to radio or television reception, which can be determined by turning the equipment off and on, the user is encouraged to try to correct the interference by one or more of the following measures:

- Reorient or relocate the receiving antenna.
- Increase the separation between the equipment and receiver.
- Connect the equipment into an outlet on a circuit different from that to which the receiver is connected.
- Consult the dealer or an experienced radio/TV technician for help.

The device has been evaluated to meet general RF exposure requirement. The device can be used in portable exposure condition without restriction.

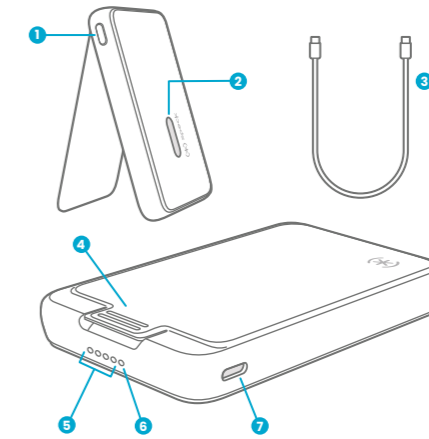
SPECIFICATIONS STANDYBANK™

- Battery Cell: Lithium ion polymer battery
- Type-C Input: 5V/3A, 9V/2A, 12V/1.5A(18W Max)
- Type-C Output: 5V/3A, 9V/2A, 12V/1.5A(18W Max)
- Wireless Output: 15W(Max)
- Battery Capacity: 5000mAh 19.25Wh
- LED Indicator: LED (4X White, 1X Blue/Green)
- Working Temperature: 0°C ~ 25°C / 77°F
- Size: 108.88 x 68.82 x 14mm
- Certification: CE, FCC, RoHS, REACH, Prop65

FCC Statement: This device complies with Part15 of the FCC Rules. Operation is subject to the following two conditions: (1) This device may not cause harmful interference, and (2) this device must accept any interference received, including interference that may cause undesired operation.

3041483

specK STANDYBANK™ USER MANUAL



1. Power Button/Charge Level
2. ClickLock™ Interlock
3. USB-C to USB-C Charge Cable
4. Kickstand Release
5. LED Battery Charge Level Indicator (x4)
6. LED Wireless Charge/Fast Charge Indicator (x1)
7. USB-C Charging Port

INSIDE

		Material Spec: SBS .012 with Soft touch matt PP (0.018mm)				
		Finish/Coating: Matte varnish				
Part Description:	STANYBANK + CL MANUAL CORE 9.3	Print Spec:	■ 312C ■ 424C			
Part Name:	STANDYBANK-CL-MANUAL-C9	Blank Size:	201mm X 107mm			
Part #:	3041483	Legend:	Other Specs:			
Dieline #:	D-1410	■ Black: cut line (DO NOT PRINT)	Template # 2015-06-18-1530			
Release Date:	04/09/24	■ Red: fold line (DO NOT PRINT)				
		■ Green: annotation (DO NOT PRINT)				
Rev Control	Description	Creative Services	Product Marketing	Pkg Design Engineer	Pkg Project Manager	Legal
Rev: 1	Initial Release					

OUTSIDE