

OneKey Touch - User Guideline

使用手册

[Get Started](#)

[开始使用](#)

[Connects to PC via USB App](#)

[通过USB连接电脑 App](#)

[Connecting the Mobile App via Bluetooth](#)

[通过蓝牙连接手机 App](#)

[Use as a U2F key](#)

[作为U2F密钥使用](#)

[FCC ID E-Label](#)

Get Started

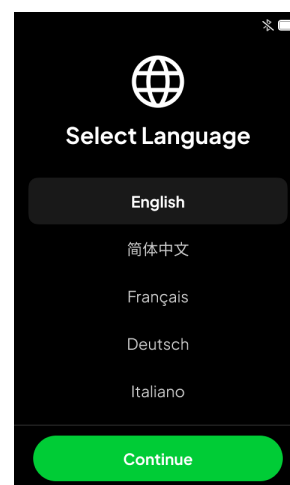
开始使用

1. To make sure the device battery has sufficient power, connect the Type-C cable to the hardware device

为了确保设备电池电量充足，连接Type-C数据线到硬件设备上

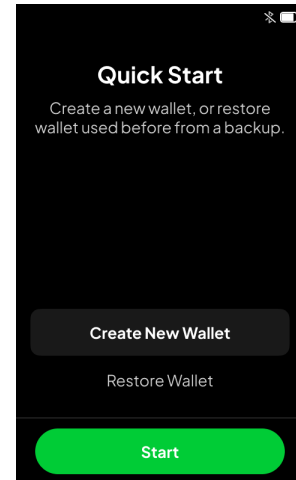
2. Select “English”

选择「English」

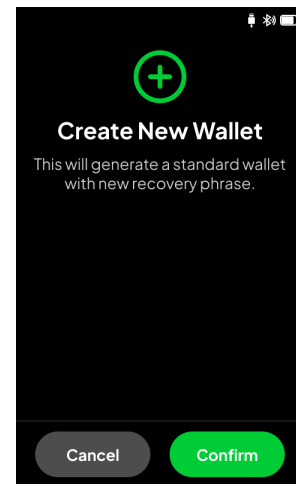


3. Select “Create New Wallet”

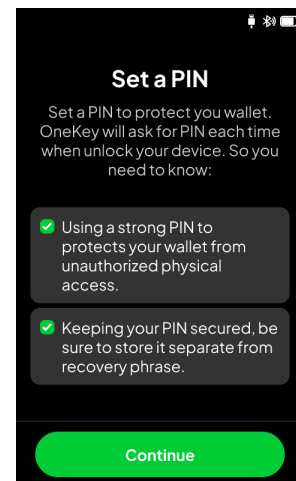
选择「Create New Wallet (创建新钱包)」




4. Tap “Confirm”
点击「Confirm (确认)」

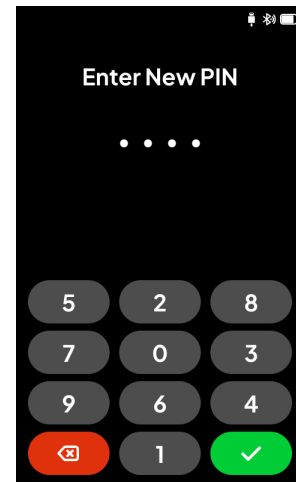


5. Tap to tick the notes, select them all and click "Continue".
点击勾选注意事项，全选后点击「Continue (继续)」



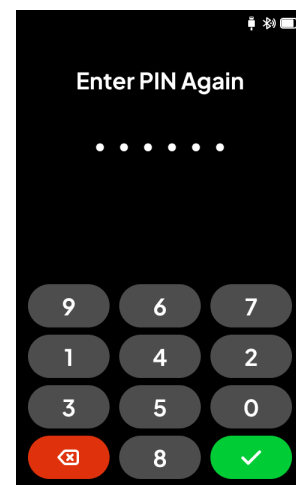
6. Set new PIN code. Tap Check button to confirm.

设置新PIN码。点击「」确认。



7. Confirm your PIN code again. Tap Check button to confirm.

再次确认PIN码，点击「」确认。

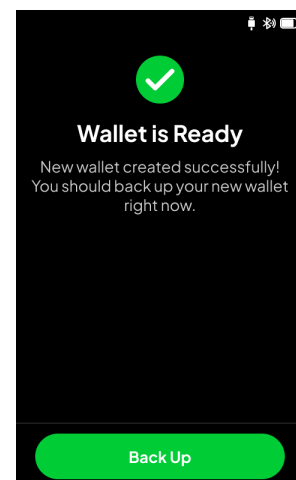


8. After correctly enter your PIN code, the screen will prompt “Wallet is Ready”.

Tap “Back Up” to enter back up process.

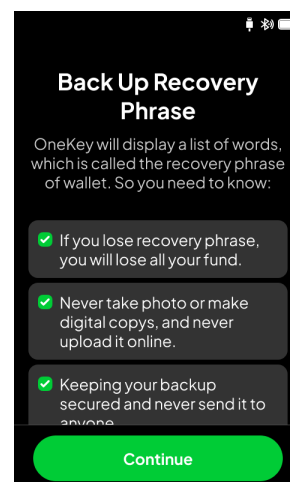
输入正确后，将提示 Wallet is Ready (钱包已就绪)。

点击「Back Up (备份)」，进入备份流程。



9. Tap to tick the notes, select them all and tap "Continue".

将备份注意事项提示全选，点击「Continue (继续)」按钮。



10. Recovery phrase is a random set of words, which will be generated by the device and this will be the only way to restore your wallet.

Write down the words and tap to tick the note, and tap "Continue".

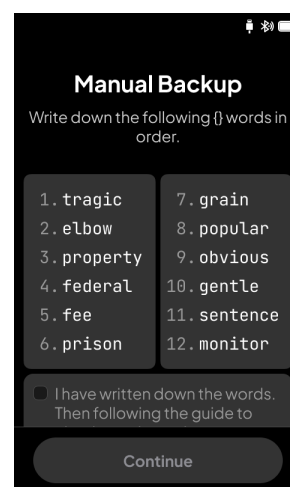
The following step will verify your words back up copy.

助记词是一个随机词组组合，设备会根据这个词组组合成您的钱包密钥。

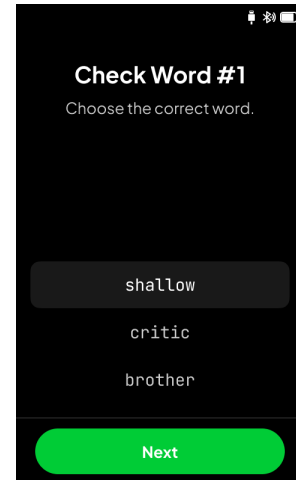
用纸和笔，**按顺序** 抄写12个助记词。抄写完成后勾选下方提示，并点击「Continue (继续)」。

接下来的流程会验证这里抄写的单词。

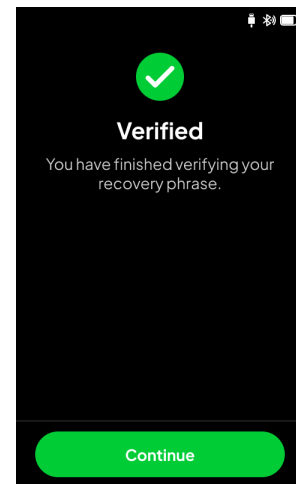
11. Choose the correct word according to the serial number prompted by the headline.



按照标题提示的序号，选择正确的单词。



12. After verifying your recovery phrase, the screen will prompt Verified. Then tap “Continue”.
验证通过后，提示 Verified。
点击「Continue (继续)」。



13. The screen will prompt “Back Up Complete”. Tap “Continue”.

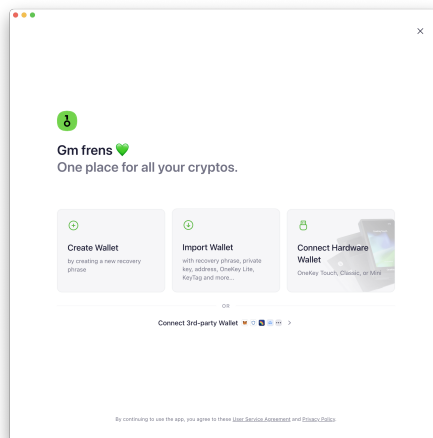
提示「Back Up Complete (完成备份)」。
点击「Continue (继续)」。



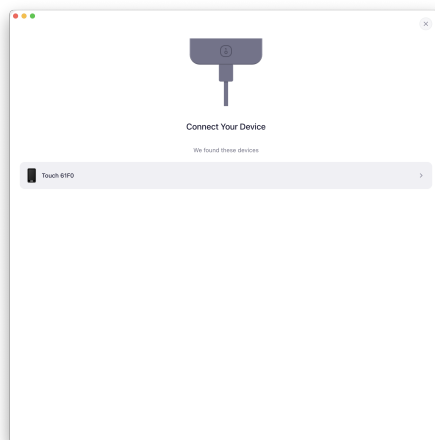
- ✓ By completing the above process, the device is successfully initialised.
- ✓ 完成以上流程，即成功初始化设备。

Connects to PC via USB App 通过USB连接电脑 App

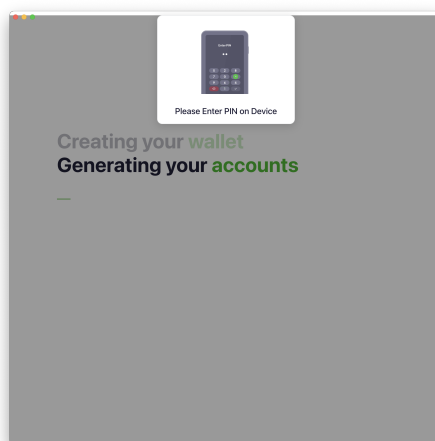
1. Install OneKey desktop app.
安装 OneKey 电脑客户端。
<https://onekey.so/download/>
2. Connect OneKey Touch to your computer using a USB Type-C cable.
使用USB Type-C线缆连接 OneKey Touch 到您的电脑。
3. Open the OneKey desktop app and select "Connect Hardware Wallet".
If you have already added a wallet in the App, add a wallet by tapping the plus button in the Wallet menu in the upper left corner of the screen.
打开 OneKey 电脑客户端，选择「Connect Hardware Wallet（连接硬件钱包）」。
如果已经在 App 中添加过钱包，请在界面左上角的钱包菜单中，点加号按钮添加钱包。



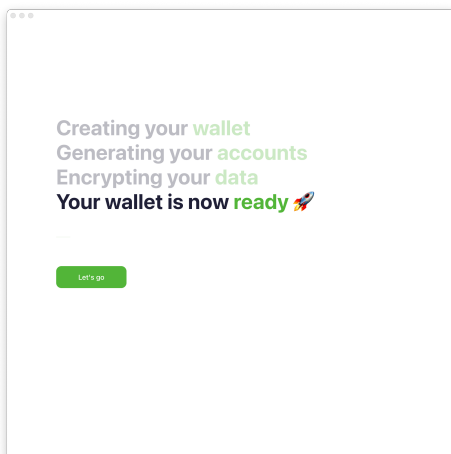
4. Select the connected OneKey Touch.
选择已连接的 OneKey Touch。



5. Enter the PIN code on the OneKey Touch.
在 OneKey Touch 上输入 PIN 码。

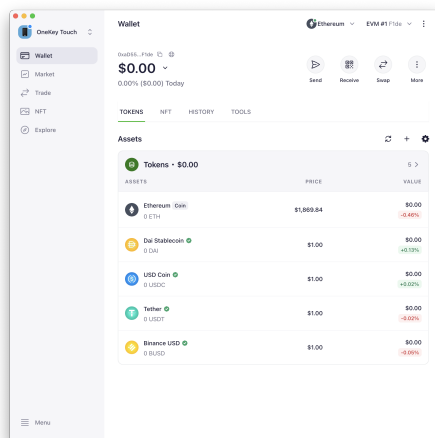


6. Wait for the wallet to be ready and click "Let's go!"
等待钱包连接准备完成，点击「Let's go!」



- At this point, the OneKey Touch is connected to the desktop App and displays the wallet assets.

到这里，OneKey Touch 已连接电脑 App 并显示钱包信息。



Connecting the Mobile App via Bluetooth 通过蓝牙连接手机 App

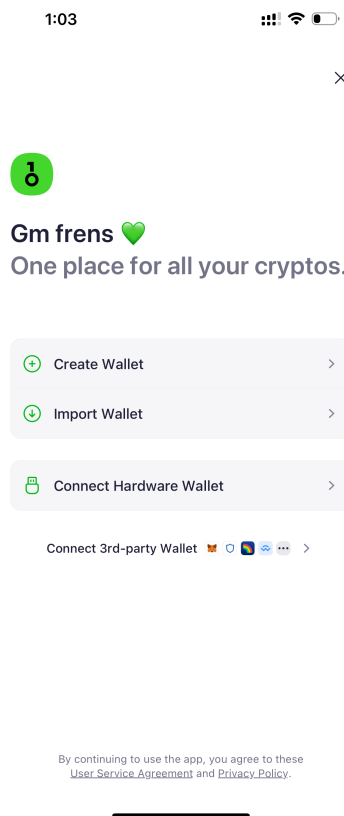
- Install OneKey mobile app.

安装 OneKey 手机客户端。

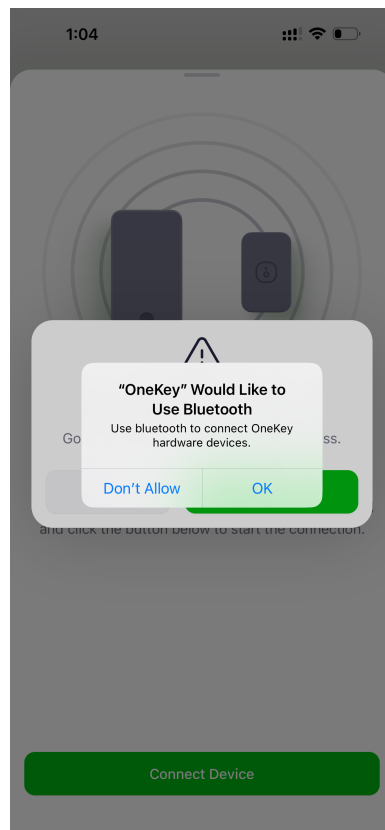
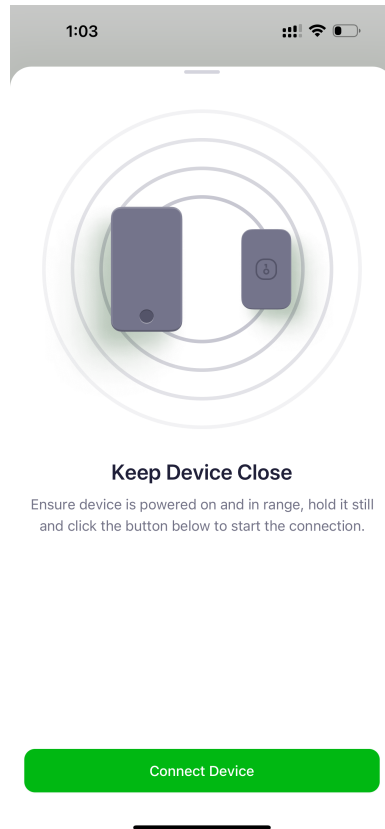
注意：iOS 版本需要美国或香港区 App Store 访问下载，没有上架中国区。

<https://www.onekey.so/download?client=mobile>

2. Please note that Bluetooth is already turned on in the OneKey Touch settings:
Unlock device - Settings (gear icon app) - Connection - Bluetooth - On.
请留意在 OneKey Touch 设置中已经打开蓝牙：解锁设备 - Settings 设置（齿轮图标应用） - Connect 连接 - Bluetooth 蓝牙 - 开启。
3. Open the OneKey mobile app and select "Connect Hardware Wallet".
If you have already added a wallet in the App, please add a wallet by tapping the plus button in the wallet menu at the top left corner of the UI.
打开 OneKey 手机客户端，选择「Connect Hardware Wallet（连接硬件钱包）」
如果已经在 App 中添加过钱包，请在界面左上角的钱包菜单中，点加号按钮添加钱包。

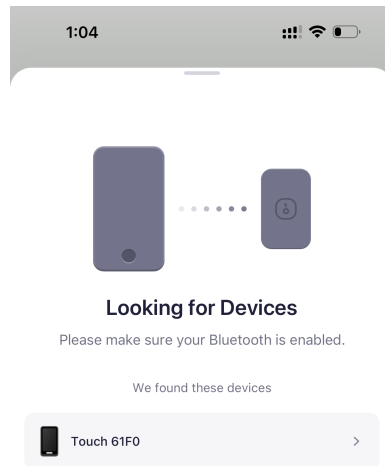


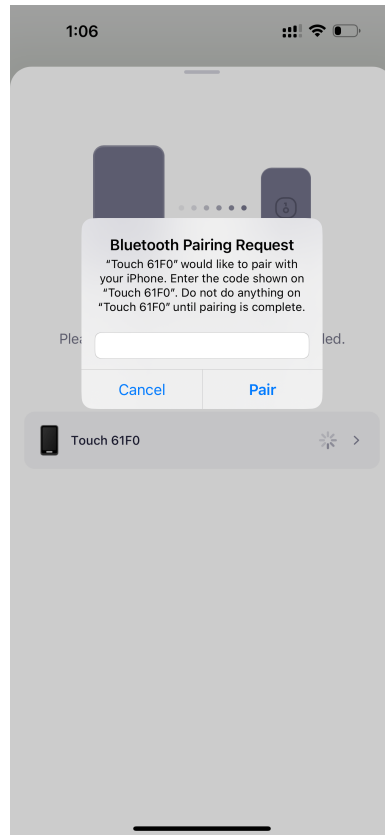
4. The process requires authorisation for Bluetooth use.
过程中，需要授权蓝牙使用。



5. Select the connected OneKey Touch. the pairing code will appear on the device and you will need to enter the 6-digit pairing code in the App pop-up window.

选择已连接的 OneKey Touch。设备上将会出现配对码，需要在 App 弹窗中输入6位数字配对码。Wait for the wallet connection to be ready and click on "Let's go!"





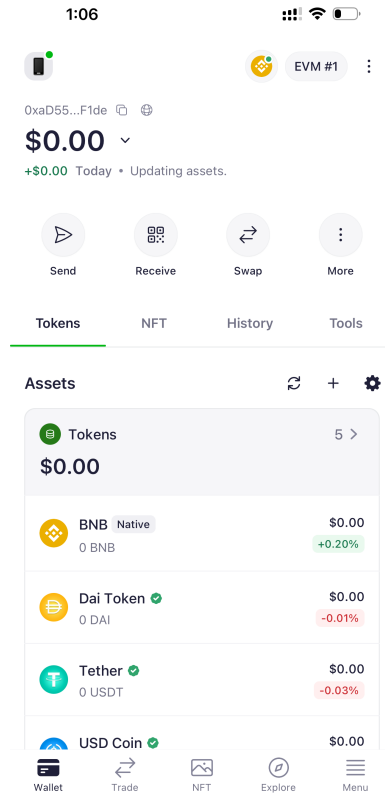
6. Wait for the wallet connection to be ready and tap "Let's go!"
等待钱包连接准备完成，点击「Let's go!」

Creating your
wallet
Generating your
accounts
Encrypting your
data
Your wallet is now
ready 🚀

Let's go

7. At this point, the OneKey Touch is connected to the mobile app and displays the wallet assets.

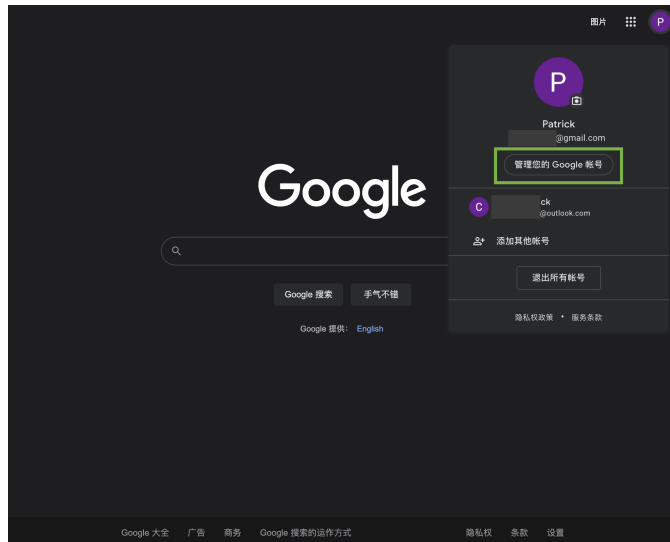
到这里，OneKey Touch 已连接手机 App 并显示钱包信息。



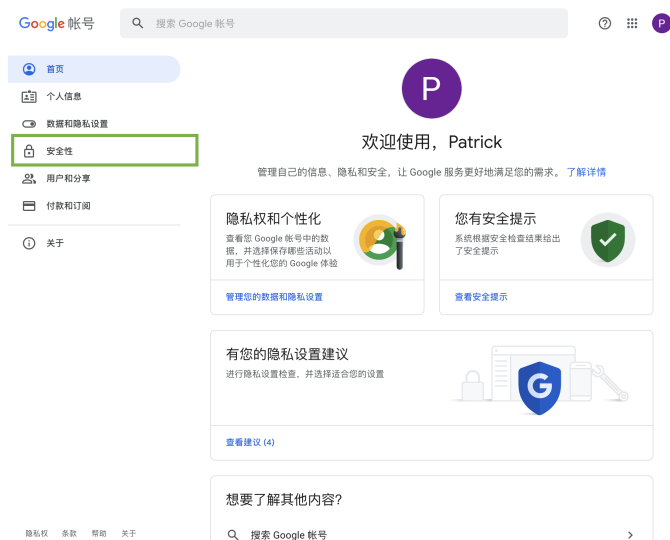
Use as a U2F key 作为U2F密钥使用

The following will use Google as an example, using OneKey Touch as the U2F key.
以下将使用 Google 作为例子，使用OneKey Touch作为U2F密钥。

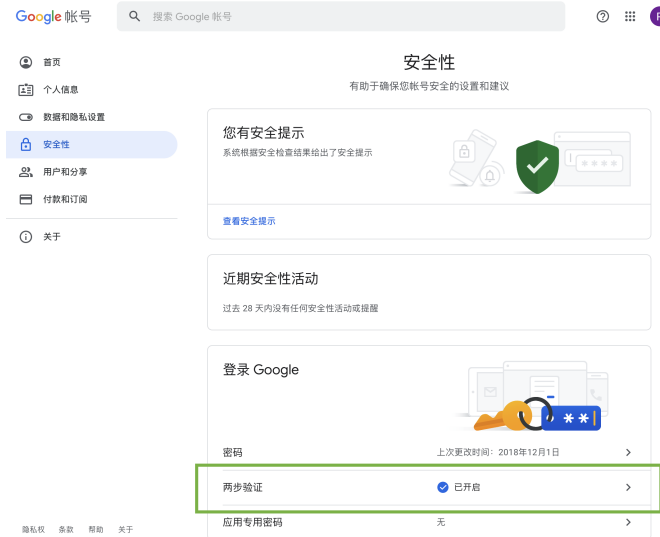
1. Start by signing into your Google account. Click on your account avatar in the top right corner and select "Manage Your Google Account".
首先登录您的Google账号。右上角点击账号头像，选择「管理您的Google 账号」



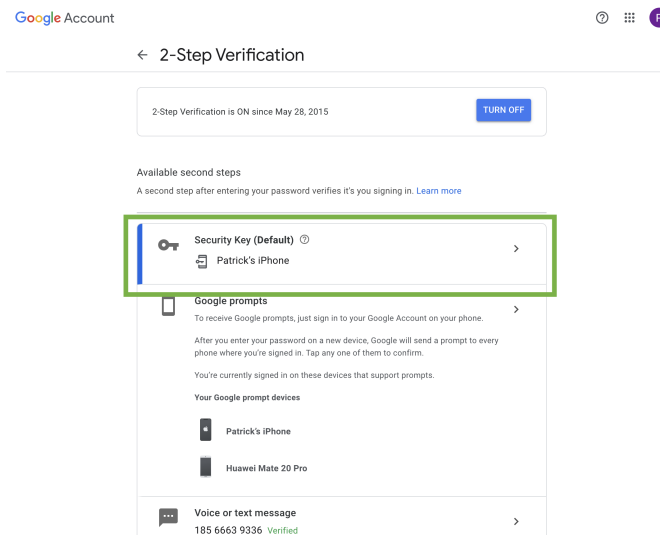
2. Choose Security 选择安全性



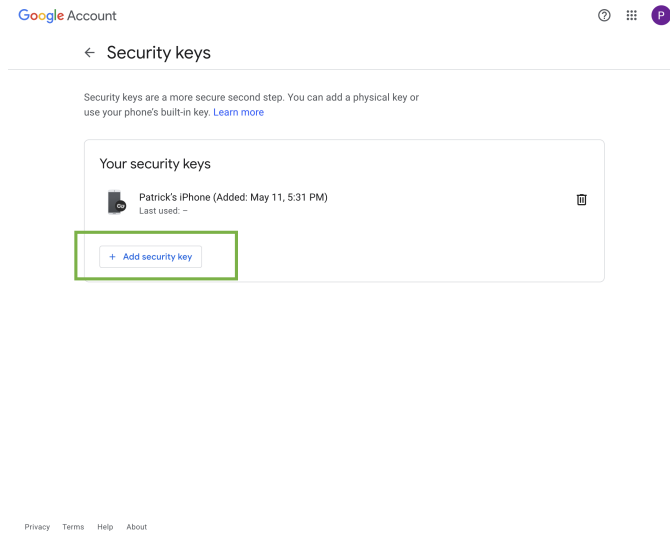
3. Select "Two-Step Verification" and Google will verify your account password. 选择「两步验证」，Google 将会验证您的账号密码。



4. Select “Security Key” 选择「Security Key」

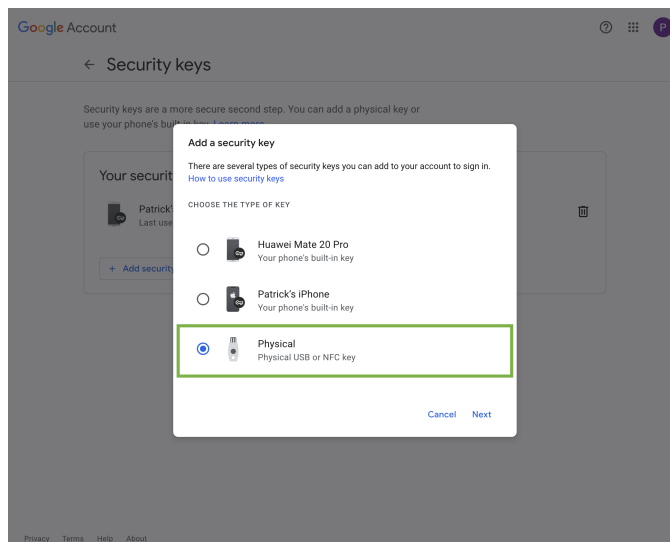


5. Select “Add security key” 选择「Add security key (添加安全密钥)」



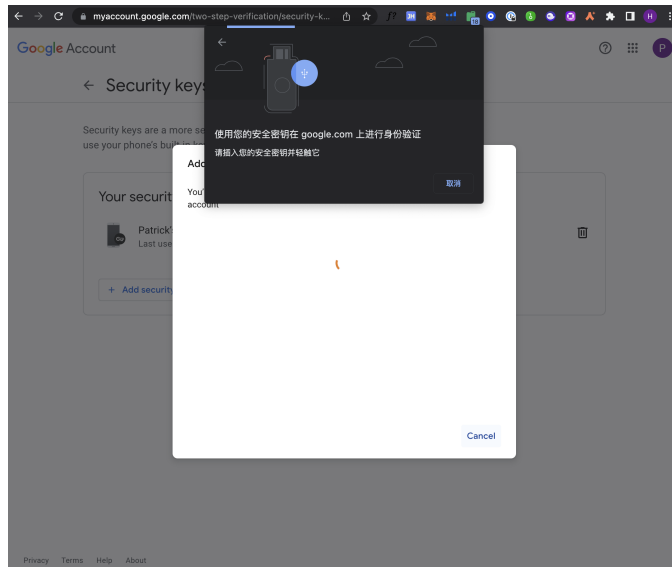
6. Select “Physical”, click “Next”

选择「Physical (实体密钥)」，点击「Next (下一步)」



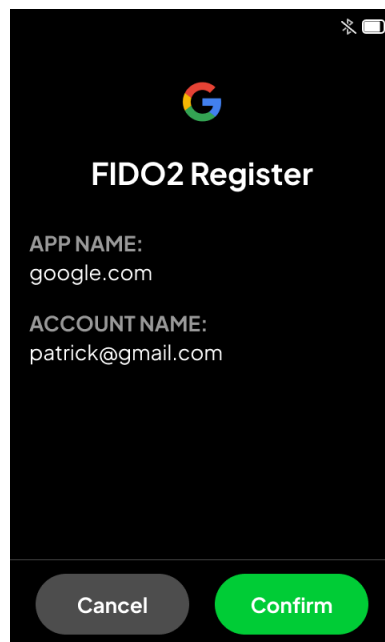
7. A prompt will pop up in your browser, at which point you will need to confirm the key on the OneKey Touch.

浏览器将会弹出提示，此时需要在OneKey Touch上确认密钥。



7. The website information will be displayed on OneKey Touch, click "Confirm" to confirm as U2F key.

在OneKey Touch上将显示网站信息，点击「Confirm(确认)」，确认为U2F密钥。



8. The site prompts that the registration of the security key has been completed.

网站提示安全密钥已完成注册。



安全密钥已完成注册

您的安全密钥已完成注册。从现在开始，您将可以在通过“两步验证”登录时使用此安全密钥。

安全密钥名称

K1212

完成

- ✅ Completion of the above process means the setup is successful.
- ✅ 完成以上流程，即设置成功。

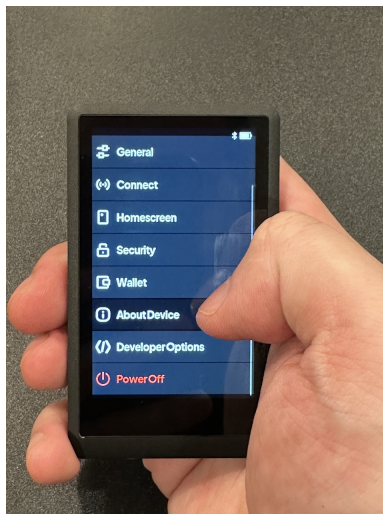
Testing Guide - OneKey Touch

FCC ID E-Label

1. Tap the “Settings” icon.
点选「设置」图标。

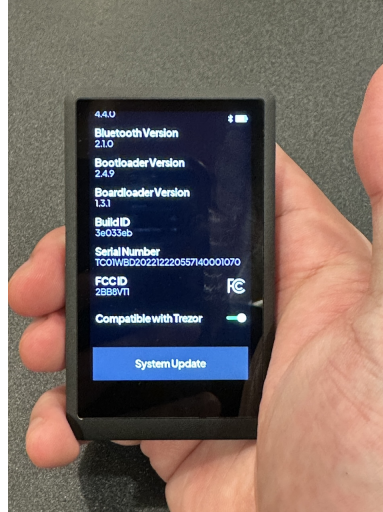


2. Select “About Device”.
选择「关于设备」。



3. Once inside, you can see the FCC ID, scroll down to see the CE mark and WEEE mark.

进入后可以看到 FCC ID，向下翻页可以看到 CE 标志和 WEEE 标志。





OneKey Touch

Use and Regulatory

Before using OneKey Touch, review the OneKey User Guide at <https://onekey.so/start>.

FCC WARNING

This device complies with part 15 of the FCC Rules. Operation is subject to the following two conditions: (1) this device may not cause harmful interference, and (2) this device must accept any interference received, including interference that may cause undesired operation.

Any changes or modifications not expressly approved by the party responsible for compliance could void the user's authority to operate the equipment.

NOTE: This equipment has been tested and found to comply with the limits for a Class B digital device, pursuant to Part 15 of the FCC Rules. These limits are designed to provide reasonable protection against harmful interference in a residential installation. This equipment generates, uses and can radiate radio frequency energy and, if not installed and used in accordance with the instructions, may cause harmful interference to radio communications.

However, there is no guarantee that interference will not occur in a particular installation.

If this equipment does cause harmful interference to radio or television reception,

which can be determined by turning the equipment off and on, the user is encouraged to try to correct the interference by one or more of the following measures:

- Reorient or relocate the receiving antenna.
- Increase the separation between the equipment and receiver.
- Connect the equipment into an outlet on a circuit different from that to which the receiver is connected.
- Consult the dealer or an experienced radio/TV technician for help.

The device has been evaluated to meet general RF exposure requirement. The device can be used in portable exposure condition without restriction

