



鑫辉数码

# 规格承认书

## APPROVAL SHEET

供应商: 信诺山

CUSTOMER:

品 名: Antenna

DISCRIPTION:

型 号: WIFI/BT

MODEL NO:

供应商料号: WBP700-1B-A

CUSTOMER P/N:

机 种: 平板

CUSTOMER MODEL:

承认部门	项目	硬件	软件	测试	fae,结构	技术中心 经理
确 认						

审核结果:

合格

不合格

说明:

REMARK:

<b>CONTENTS</b> .....	<b>1</b>
<b>1. PROJECT INFORMATION AND ELECTRICAL SPECIFICATION</b> .....	<b>3</b>
1-1 PROJECT PICTURE.....	3
1-2 FREQUENCY BAND: .....	3
1-3 IMPEDANCE MATCHING .....	3
<b>2. VSWR</b> .....	<b>3</b>
2-1 MEASURING METHOD:.....	3
2-2 S11 PARAMETER VALUES .....	3
<b>3. EFFICIENCY AND GAIN</b> .....	<b>4</b>
3-1 EFFICIENCY/PEAKGAIN- /WIFI/BT .....	5
<b>4. ICTIVE TEST RESULT</b> .....	错误！未定义书签。
<b>5. THE PRODUCTION INDEX</b> .....	<b>8</b>
<b>6. STRUCTURAL DRAWINGS</b> .....	<b>9</b>

## 1. Project information and Electrical Specification

*Those specifications were specially defined for WIFI/BT model, and all characteristics were measured under the model's handset testing jig.*

1-1 Project picture

1-2 Frequency Band:

Frequency Band	MHz
GPS/Wi-Fi/BT	1575/2400-2500/5050-5850

1-3 Impedance matching

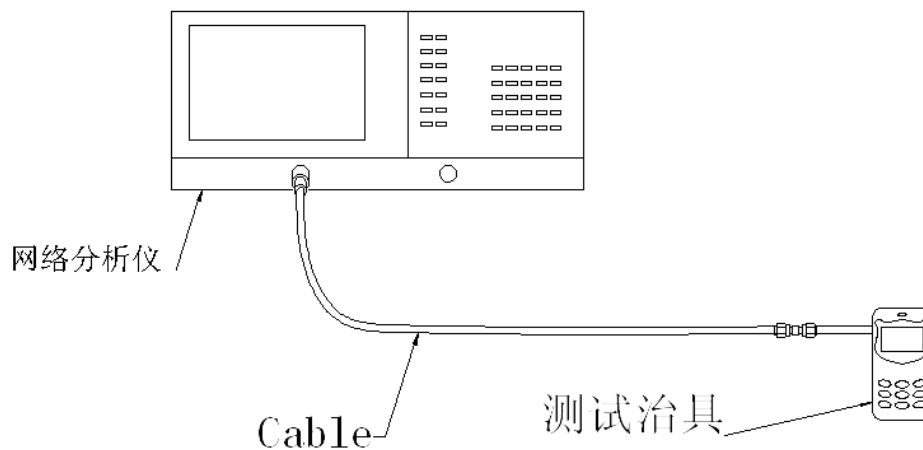
天线原匹配无更改

## 2. VSWR

### 2-1 Measuring Method:

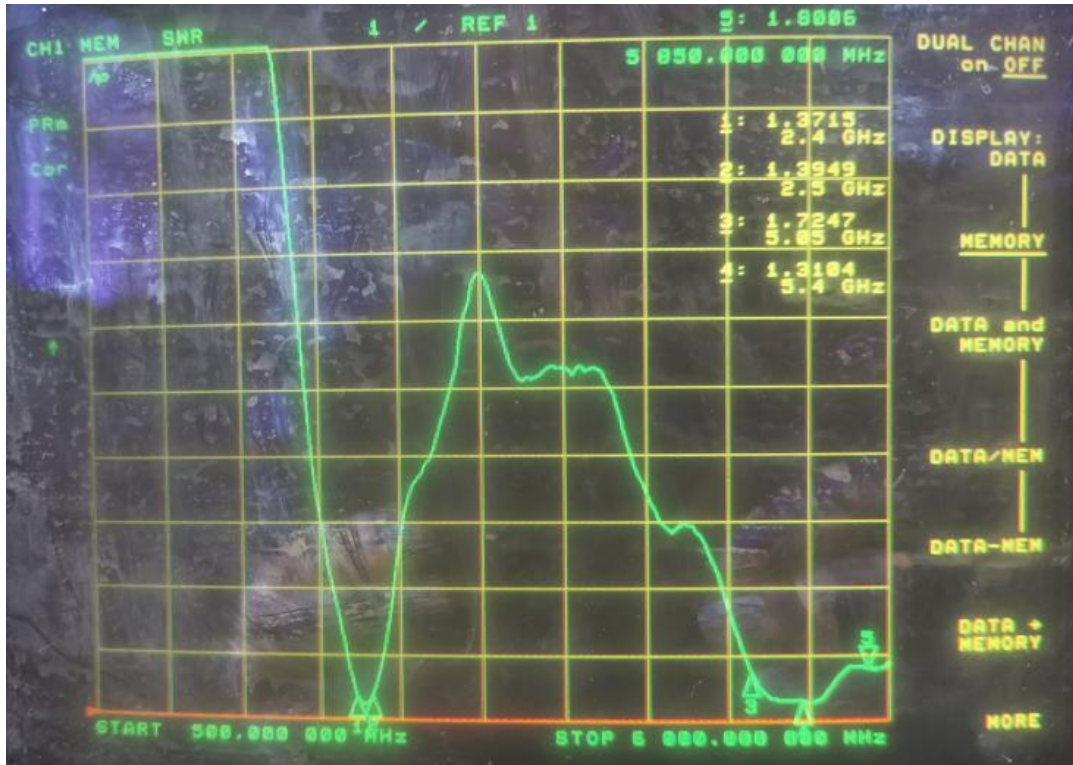
1. A  $50\Omega$  coaxial cable is connected to the antenna. Then this cable is connected to a network analyzer to measure the VSWR,
2. Keeping this jig away from metal at least 20cm.

测试示意图如下:



### 2-2 S11 parameter values

频率 (MHZ)	2400	2500	5050	5400	5850
驻波	1.37	1.39	1.72	1.31	1.80



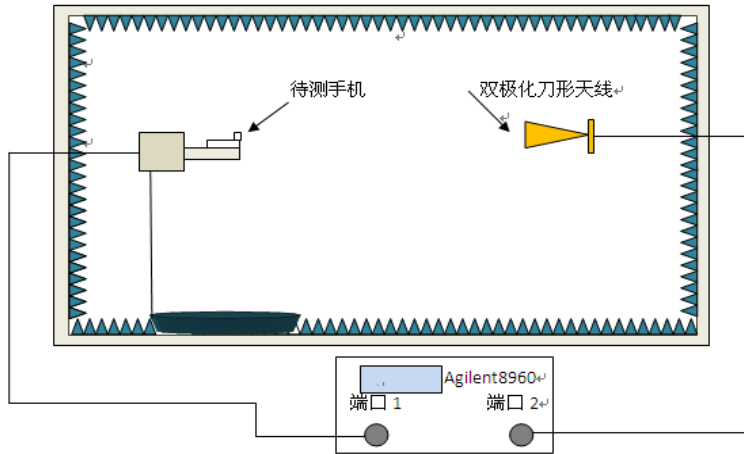
### 3. Efficiency and Gain

**\*measuring and test instruments:**

微波暗室, Agilent 网络分析仪, Agilent 频谱分析仪, 8960 综合测试仪, 标准天线

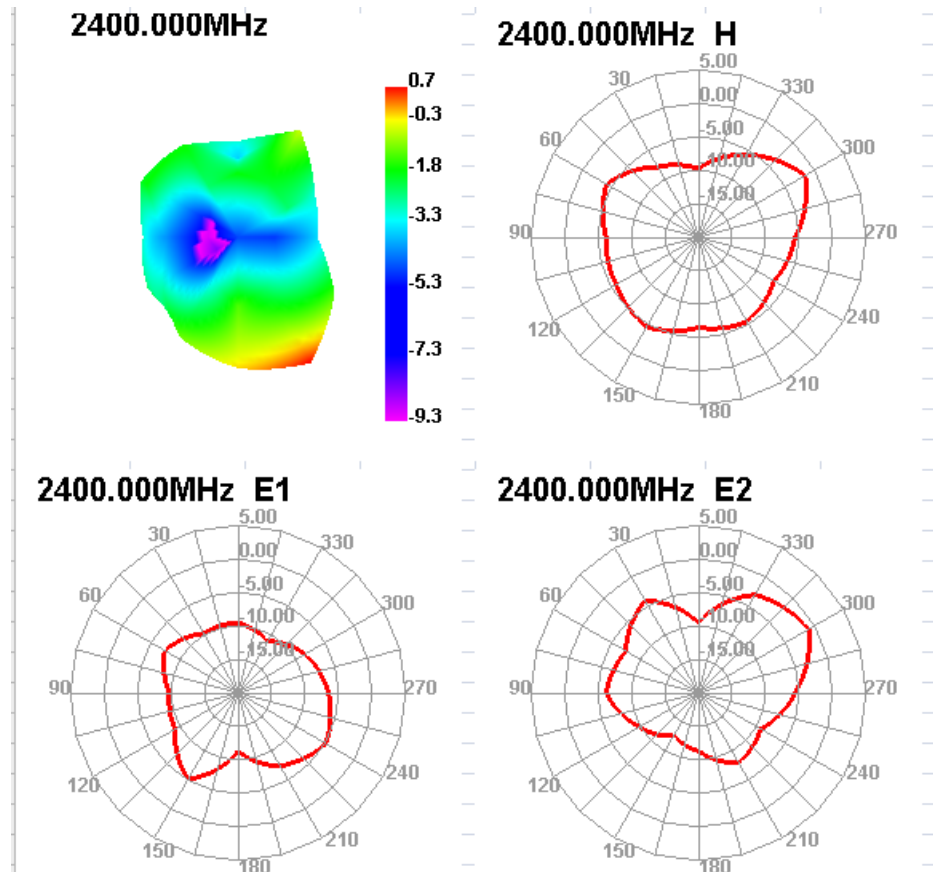
**\*test method:**

equipment 以 H 面放于转台中心位置固定, 与喇叭天线中心位置在同一个水平线上。

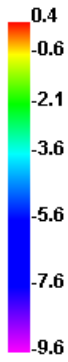
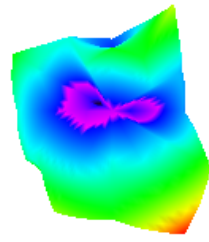


3-1 Efficiency/Gain- WIFI/BT

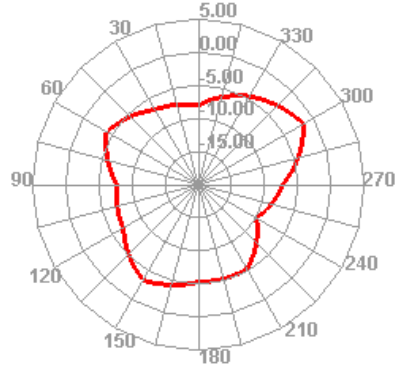
Freq (MHz)	Effi (%)	Effi (dB)	Gain (dBi)
2400	43.25	-3.64	0.69
2450	41.22	-3.85	0.4
2500	42.18	-3.75	0.55



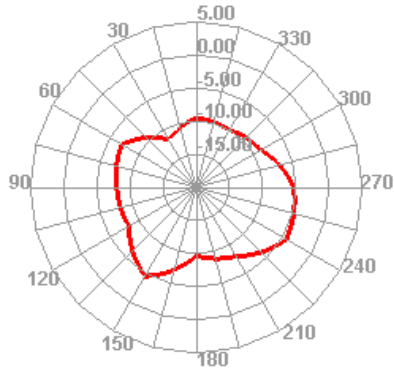
2450.000MHz



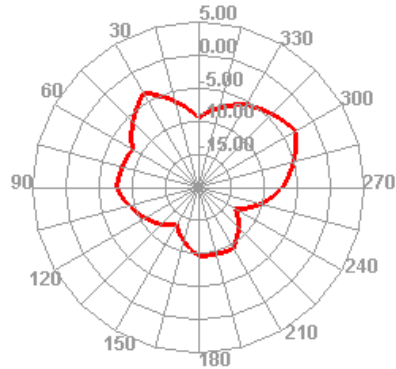
2450.000MHz H



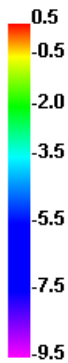
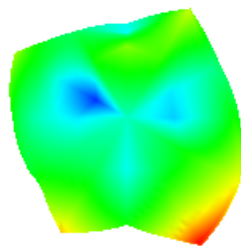
2450.000MHz E1



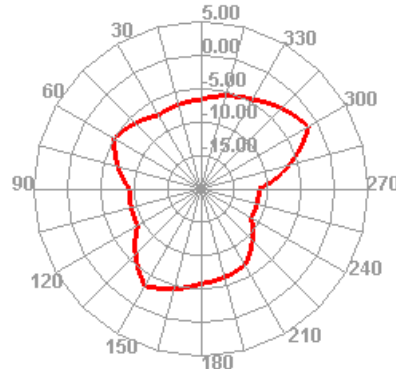
2450.000MHz E2



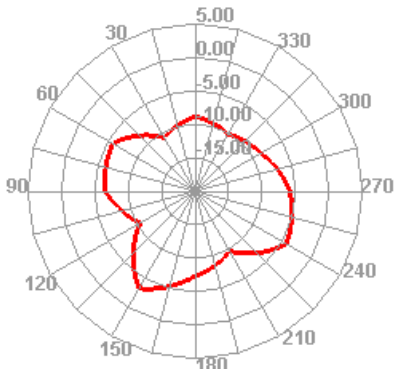
2500.000MHz



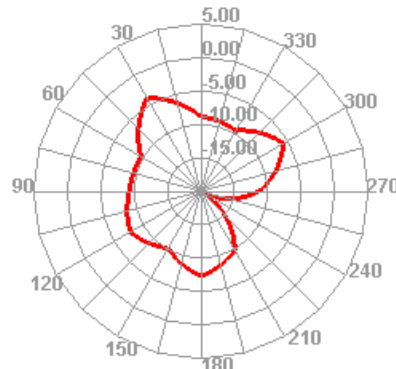
2500.000MHz H



2500.000MHz E1

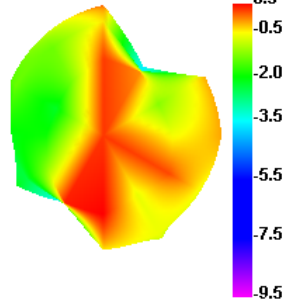


2500.000MHz E2

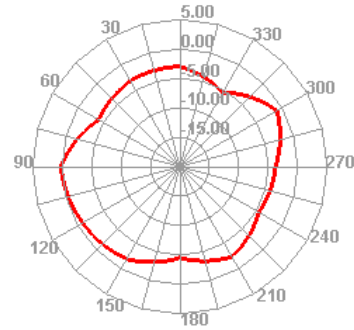


Freq (MHz)	Effi (%)	Effi (dB)	Gain (dBi)
5050	43.12	-3.65	0.5
5450	42.18	-3.75	0.41
5850	46.02	-3.37	0.72

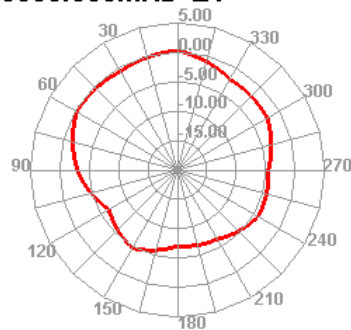
5050.000MHz



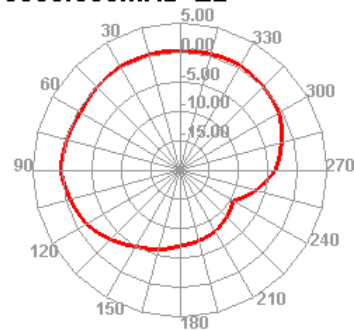
5050.000MHz H



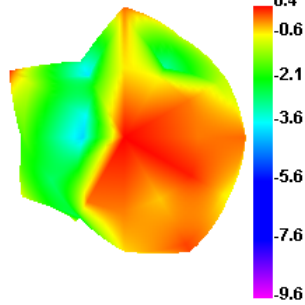
5050.000MHz E1



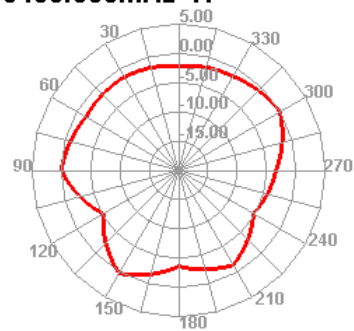
5050.000MHz E2



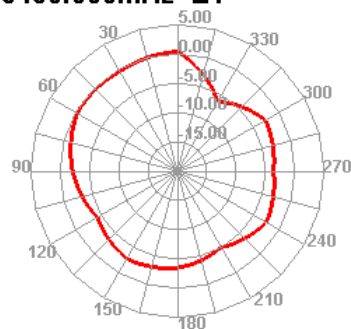
5450.000MHz



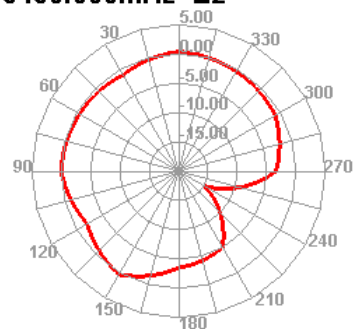
5450.000MHz H

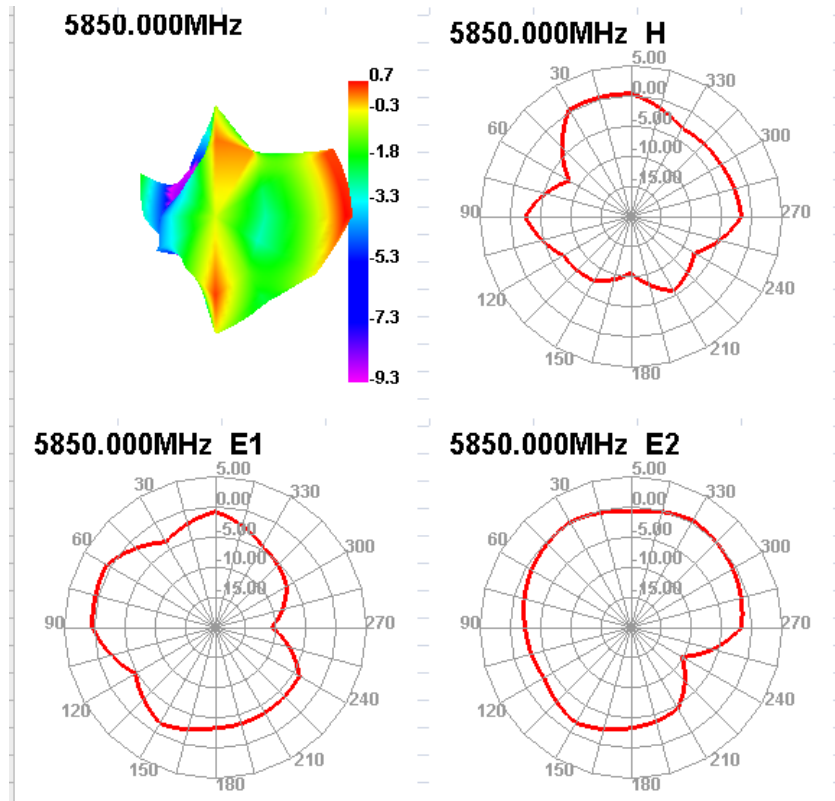


5450.000MHz E1



5450.000MHz E2





## 5. The production index

天线量产时，以驻波比作为量产测试标准。  
根据项目本身的差异,给出如下标准：

频率 (MHZ)	量产标准
1575/2400-2500/5050-5850	VSWR (量产产品) < VSWR(设计样品)+0.5



## 6.structural drawings

