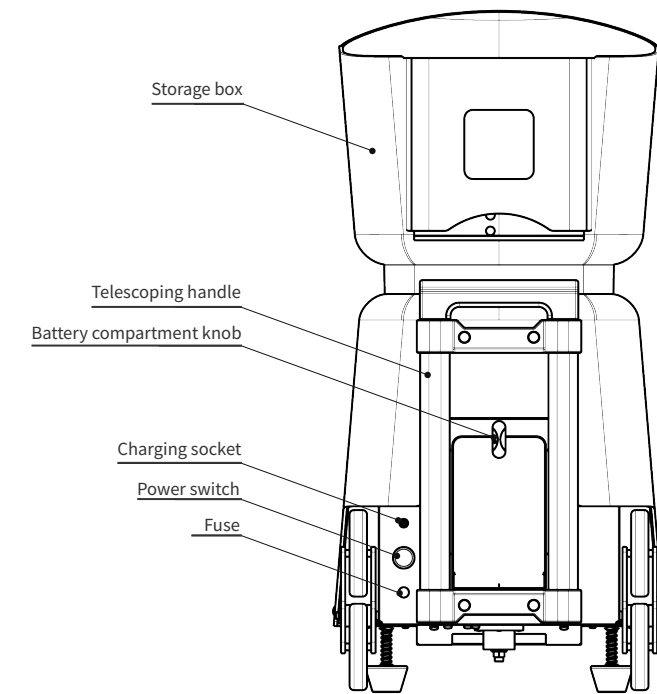


TST1C / TST2C

Please read the instruction carefully before installing and using the product
Please observe the warnings and precautions marked in the product manual

01/Product components



02/Product parameter

Power supply	24V DC lithium battery 220V AC Lithium battery charger	Power	80W
Ball capacity	120	Frequencyball	2-10 s/ball
Lithium battery capacity	20000mAH	weight	≤25kg
Serve highly	0.9~4meter	Serve distance	≤50m
Folded size (Length*Width*Height)	40cm*34cm*50cm	Unfolded size (Length*Width*Height)	40cm*34cm*78cm

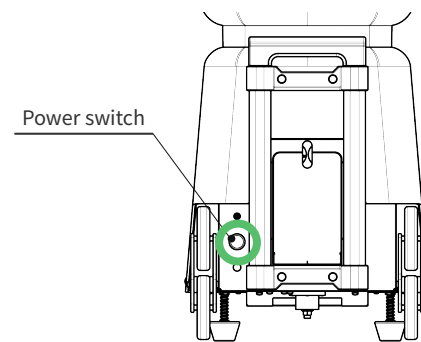
03/Inventory

- Dana intelligent tennis trainer x1
- Remote battery x2
- Product manual x1
- Remote x1
- Power charger x1

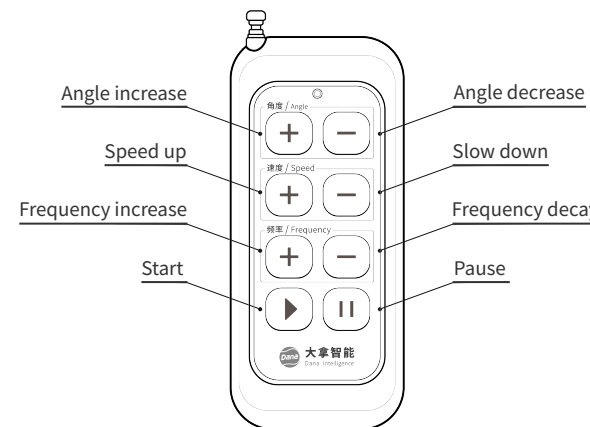
04/How to use the equipment

1 Start up

Turn on the power button, as shown below:



2 Remote control

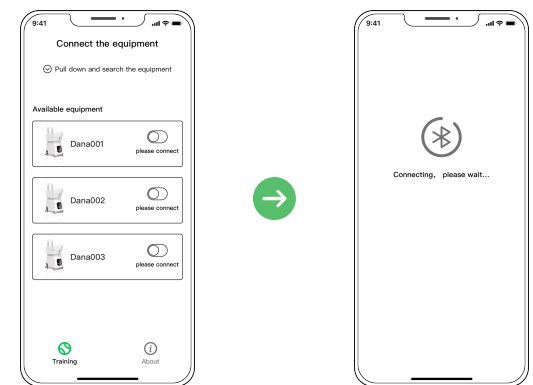


3 Mobile control

Scan QR code, then install APP.



Turn on the phone's Bluetooth and Internet connection, then as you see the bluetooth connection page, after the equipment is successfully connected, you can enter the training mode.



4 Enter the training mode

Three training modes are available for users to select

System mode	<ul style="list-style-type: none"> • Fixed-point practice • Horizontal recirculating practice • Cross line practice • Vertical recirculating practice <p>Users can select specific mode for customized tennis training</p>
Custom mode	Users can set up any 7 drop points for tennis training
Random mode	The equipment will randomly select the drop point

For all modes:

Users can adjust the ball frequency (0-10) , speed(20-140km/h), angle(-10-10), topspin or backspin (-10-10).

05/Exception handling

Equipment failure cause analysis and troubleshooting		
fault phenomenon	Reason of problems	Solutions
The equipment does not serve	<ul style="list-style-type: none"> • Wrong selection of AC and DC power • Fuse broken or damaged 	<ul style="list-style-type: none"> • Select the right power • Replace the fuse
Serve out of bounds	<ul style="list-style-type: none"> • The equipment is not placed in the correct position • The equipment serves too fast • Different types of balls are selected 	<ul style="list-style-type: none"> • Place the equipment in a suitable position to serve • Decrease the speed by using the remote control • Use the same type of ball

drop ball failure	<ul style="list-style-type: none"> • The ball is stuck and does not enter the channel 	<ul style="list-style-type: none"> • Check whether there are too many balls stuck above the turntable
Ball stuck	<ul style="list-style-type: none"> • Ball stuck may caused by wet ball • Abnormal rotation of the driving wheel 	<ul style="list-style-type: none"> • Remove the ball where stuck in the channel • Start again to verify that the driving wheel can be turned

06/matters need attention

- It is prohibited to use equipment when tennis court is watery or it is rainy, wet ball may cause stuck.
- To avoid injury, do not stand in front of the ball outlet while the machine is running.
- If the ball is driven into the machine accidentally, turn off the power and then take the ball out.
- Be sure to turn off power while cleaning the equipment, otherwise it may cause in danger.
- Periodically clean the debris inside the equipment.
- It needs to be charged in time, the battery life will be affected if it is not charged for a long time.
- Please be sure to observe the precautions specified in this manual and use the product correctly. Otherwise the failure or loss caused by your improper use will not be covered by the manufacturer's warranty, the manufacturer does not assume any relevant responsibility.

Note: If you disassemble the equipment by yourself, all consequences are at your own risk.

FCC Warning:

This equipment has been tested and found to comply with the limits for a Class B digital device, pursuant to part 15 of the FCC Rules. These limits are designed to provide reasonable protection against harmful interference in a residential installation. This equipment generates, uses and can radiate radio frequency energy and, if not installed and used in accordance with the instructions, may cause harmful interference to radio communications. However, there is no guarantee that interference will not occur in a particular installation. If this equipment does cause harmful interference to radio or television reception, which can be determined by turning the equipment off and on, the user is encouraged to try to correct the interference by one or more of the following measures:

- Reorient or relocate the receiving antenna.
- Increase the separation between the equipment and receiver.
- Connect the equipment into an outlet on a circuit different from that to which the receiver is connected.
- Consult the dealer or an experienced radio/TV technician for help.

Caution: Any changes or modifications to this device not explicitly approved by manufacturer could void your authority to operate this equipment.

This device complies with part 15 of the FCC Rules. Operation is subject to the following two conditions:

(1) This device may not cause harmful interference, and (2) this device must accept any interference received, including interference that may cause undesired operation.

This equipment complies with FCC radiation exposure limits set forth for an uncontrolled environment. This equipment should be installed and operated with minimum distance 20cm between the radiator and your body.