

# Instructions



Scan the QR code to download the APP

## Bluetooth Tire Pressure Monitoring Application:

### User Guide

1. Scan the QR code on the packaging box with your mobile phone to download and install the CozyLife app.

To offer you a varied user experience, we have developed two additional apps, Car Home and TPMS, available for download. If you're interested in trying them out or encounter any issues with CozyLife App, you can download them using the QR codes provided above.

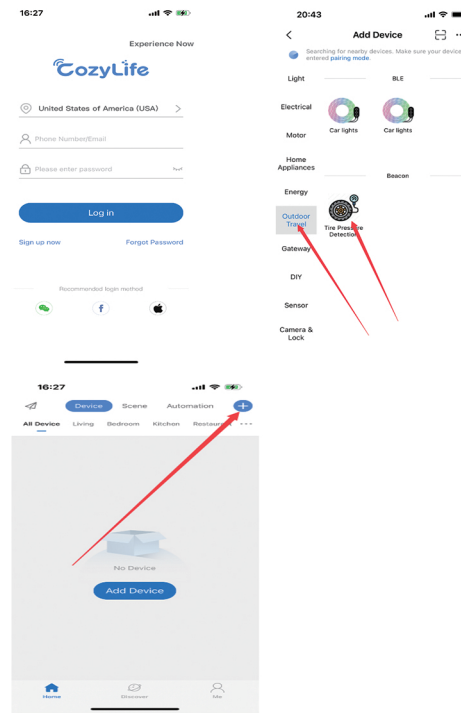


2. Sensor pairing process

2.1 Register for a CozyLife account and then log in to access the main interface of the app.

2.2 Upon opening the app, you'll be asked if Bluetooth is enabled on your phone. If it's not, you'll have the option to activate it, which is necessary for the app to function properly.

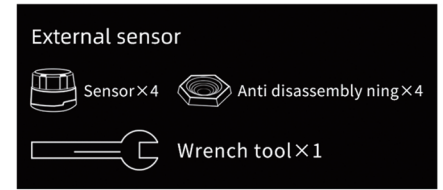
2.3 Click the "+" icon in the top right corner to add a device. On the left, select "Outdoor Travel", and then on the right interface, choose "Tire Pressure Detection."



Before proceeding with the binding operation, please install the tire pressure sensors according to the following method.

3. Install the tire pressure sensor by following these guidelines:

3.1. Sensor components



3.2 Tire Positioning Diagram for Sensor Installation



### 3.3. Installation method of external sensor



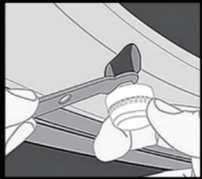
A. Put in Anti-theft screws



B. Tighten the sensor with tire valve



C. Screw Anti-theft screws with sensor

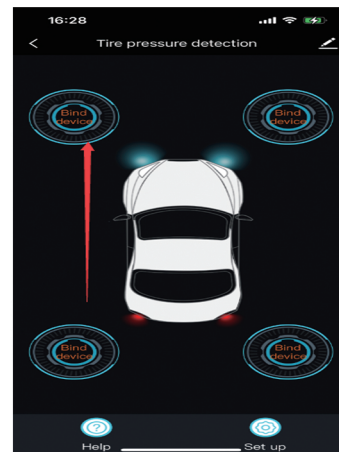


D. Hold the sensor, tighten Anti-theft screw with wrens

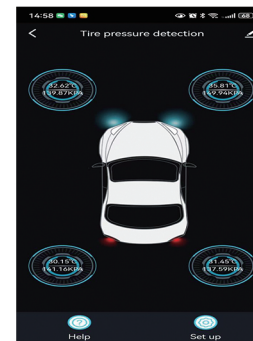
Note:  
Please save the Installation tools(screws and wench)in car,for Installing or uninstalling sensor.

After installing the tire pressure sensors, open the app to perform the binding operation.

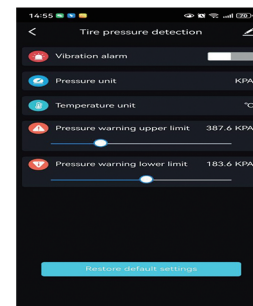
4. To bind the new device, simply select "Auto Bind" on the interface, and then proceed to bind the Sensor mounting. Select "Auto bind" and a new interface will appear.



5. The sensor will be paired within 60 seconds, and the corresponding sensor will be coded into binding, and the above operations have been successfully bound to the sensor. The main interface displays the tire pressure. If the binding is unsuccessful, please reinstall the tire pressure sensor at the corresponding position.



6. Function settings, including vibration alarm, pressure and temperature unit setting, can be set. Set the pressure alarm range



### Frequently Asked Questions (FAQ):

- If binding fails after installing the tire pressure sensors, consider the following steps:
  - Check the sensor's installation: Ensure each sensor is correctly attached and secure.
  - Restart the app: Sometimes, restarting the app can resolve connectivity issues.
  - Recheck Bluetooth: Make sure your device's Bluetooth is active and functioning.
- Where can I obtain a complete installation video? Scan the following QR code to view the online instructional video
- If you need more professional guidance or wish to integrate tire pressure sensors into your own system, how should you proceed? Please send an email to [lihonggang@doit.am](mailto:lihonggang@doit.am).

### TPMS Video



**FCC Warning:**

This equipment has been tested and found to comply with the limits for a Class B digital device, pursuant to part 15 of the FCC Rules. These limits are designed to provide reasonable protection against harmful interference in a residential installation. This equipment generates, uses and can radiate radio frequency energy and, if not installed and used in accordance with the instructions, may cause harmful interference to radio communications. However, there is no guarantee that interference will not occur in a particular installation. If this equipment does cause harmful interference to radio or television reception, which can be determined by turning the equipment off and on, the user is encouraged to try to correct the interference by one or more of the following measures:

- Reorient or relocate the receiving antenna.
- Increase the separation between the equipment and receiver.
- Connect the equipment into an outlet on a circuit different from that to which the receiver is connected.
- Consult the dealer or an experienced radio/TV technician for help.

**Caution:** Any changes or modifications to this device not explicitly approved by manufacturer could void your authority to operate this equipment.

This device complies with part 15 of the FCC Rules. Operation is subject to the following two conditions:

(1) This device may not cause harmful interference, and (2) this device must accept any interference received, including interference that may cause undesired operation.

This equipment complies with FCC radiation exposure limits set forth for an uncontrolled environment. This equipment should be installed and operated with minimum distance 0cm between the radiator and your body.