

HDMI TV background mood light

## LED STRIP

### CF-11 User Manual

#### SAFETY INSTRUCTIONS

- To ensure correct and safe installation, usage and functioning of the unit, always follow these instructions carefully and keep for future reference.
- DO NOT place or operate near extreme heat sources, moisture, or corrosive substances.
- DO NOT operate any lamp with a damaged cord or after malfunction occurs, or damaged in any manner. Discard the lamp, or return it to an authorized service facility for examination or repair.
- DO NOT operate the product with wet hands as it may cause electrical shock.
- DO NOT dismantle the unit by yourself, always ask professional electricians or authorized technicians for repair.
- It is not a toy. Close attention is necessary when used by or near children. Children should be supervised to ensure that they do not play with the unit.

#### Specifications

Input	AC 100-240V 50/60Hz
Output	DC12V
Rated Power	36W
Light Source	LED RGBIC
Color Temp	3000K
CRI	≥80

#### USING YOUR TABLE LAMP

##### Package Contents

- 1 x Light strip
- 1 x HDMI sync box
- 1 x HDMI cable
- 1 x Power adapter
- 1 x User manual

##### Installation

###### Sticking the Strip

1. Facing the back of the TV, start from the lower right corner, then go up to the top, and then to the upper left corner, stick the light strip tightly;
2. Start from the lower right corner, then to the left, and then to the upper left corner, stick the light strip tightly.
3. Cut off the excess light strips.

\*Excess light strips must be cut off and the USB port must be left disconnected before cutting!

\*The HDMI sync box can only be powered on after sticking the light strip and connecting all the input and output ports!

##### Connections

- Output port HDMI cable - TV, projector or monitor screen.
- Input port HDMI cable - PS4, Switch and other gaming devices/ computers/laptops/TV boxes and other HDMI signal devices.
- DC port - 12V power adapter.
- USB port - LED light strip.

#### How to Control HDMI Box

You can control the sync box:

##### 1. by smartphone

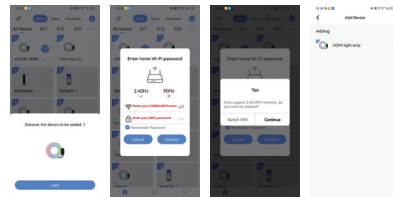
Download CozyLife APP: Search for "CozyLife" in the APP Store (iOS version) or Google Play (Android version), register and log in after downloading.

##### 2. by voice commands

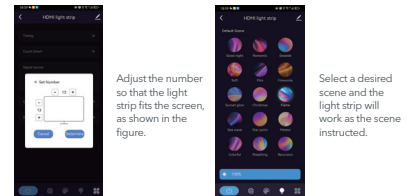
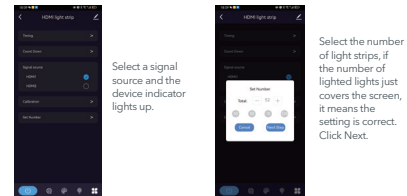
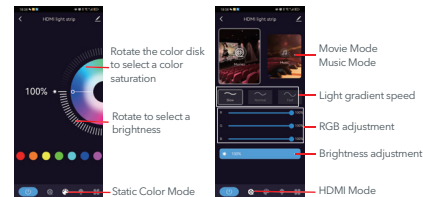
Connect the HDMI sync box to a smart bluetooth soundbar, then you can control the sync box via voice commands.

##### APP Control

1. Ensure that your phone Bluetooth is enabled and is connected to WiFi (only supports 2.4G WiFi network), and that the light strip is in factory mode;
2. Launch the "CozyLife" APP, the product will be automatically recognized, and a prompt box will pop up at the "+" in the upper right corner;
3. Click the prompt box, select the device to be connected, click Next, and enter the WiFi setting page;
4. After entering the WiFi password, wait for the network configuration to complete;
5. After the product is successfully connected, you can rename the product and classify the room.



#### APP Settings



## CLEANING AND MAINTENANCE

### Note:

Always turn off the light and unplug the cord before cleaning or maintenance.



Do not use abrasive cleaning tools or aggressive liquids to clean the lamp.



Do not immerse in water or any other liquids.

This device contains licence-exempt transmitter(s)/receiver(s) that comply with Innovation, Science and Economic Development Canada's licence-exempt RSS(s). Operation is subject to the following two conditions:

- (1) This device may not cause interference.
- (2) This device must accept any interference, including interference that may cause undesired operation of the device.

L'émetteur/récepteur exempt de licence contenu dans le présent appareil est conforme aux CNR d'Innovation, Sciences et Développement économique Canada applicables aux appareils radio exempts de licence. L'exploitation est autorisée aux deux conditions suivantes :

- (1) L' appareil ne doit pas produire de brouillage;
- (2) L' appareil doit accepter tout brouillage radioélectrique subi, même si le brouillage est susceptible d' en compromettre le fonctionnement.

Radio Frequency Exposure Statement for IC  
The device has been evaluated to meet general RF exposure requirements. The device can be used in mobile exposure conditions. The min separation distance is 20cm.

Déclaration d'exposition aux radiofréquences pour IC  
L'appareil a été utilisé pour répondre aux exigences générales en matière d'exposition aux radiofréquences.

### FCC STATEMENT:

This device complies with Part 15 of the FCC Rules. Operation is subject to the following two conditions:

- (1) This device may not cause harmful interference, and
- (2) This device must accept any interference received, including interference that may cause undesired operation.

**Warning:** Changes or modifications not expressly approved by the party responsible for compliance could void the user's authority to operate the equipment.

**NOTE:** This equipment has been tested and found to comply with the limits for a Class B digital device, pursuant to Part 15 of the FCC Rules. These limits are designed to provide reasonable protection against harmful interference in a residential installation. This equipment generates uses and can radiate radio frequency energy and, if not installed and used in accordance with the instructions, may cause harmful interference to radio communications. However, there is no guarantee that interference will not occur in a particular installation. If this equipment does cause harmful interference to radio or television reception, which can be determined by turning the equipment off and on, the user is encouraged to try to correct the interference by one or more of the following measures:  
Reorient or relocate the receiving antenna.  
Increase the separation between the equipment and receiver.  
Connect the equipment into an outlet on a circuit different from that to which the receiver is connected.  
Consult the dealer or an experienced radio/TV technician for help.

### FCC Radiation Exposure Statement:

This equipment complies with FCC radiation exposure limits set forth for an uncontrolled environment. This equipment should be installed and operated with minimum distance 20cm between the radiator & your body.



### WEEE Compliance

Correct Disposal of This Product (Waste Electrical & Electronic Equipment)

(Applicable in countries with separate collection systems)

This marking on the product, accessories or literature indicates that the product and its electronic accessories should not be disposed of with other household waste at the end of their working life. To prevent possible harm to the environment or human health from uncontrolled waste disposal, please separate these items from other types of waste and recycle them responsibly to promote the sustainable reuse of material resources. Household users should contact either the retailer where they purchased this product, or their local government office, for details of where and how they can take these items for environmentally safe recycling. Business users should contact their supplier and check the terms and conditions of the purchase contract. This product and its electronic accessories should not be mixed with other commercial wastes for disposal.



Made in China