



KartaLink

Seamless backup for your dashcam.

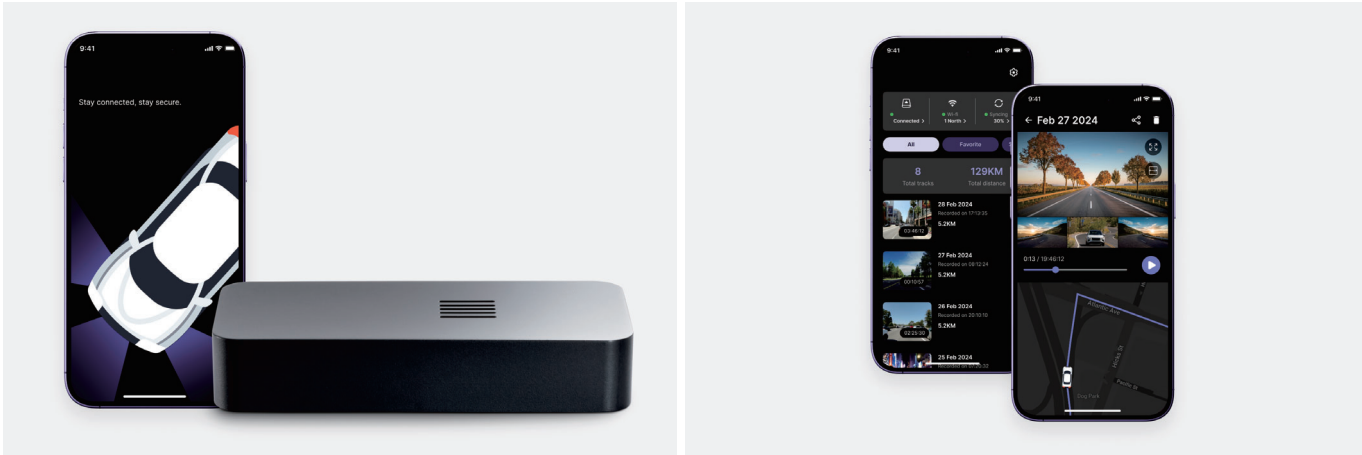
Quick-Start Guide

<draft>

Introduction	2
1. Setup KartaLink	3
1.1 What's in the box	3
The KartaLink Device	3
Connection cable	3
1.2 Installation	4
Connect the cable	4
Open the glovebox	4
Connect to the car	5
2. Pair with the KartaLink app	5
Login	6
Pair your device	7
Name your device	7
Connect to Wi-Fi	8
3. Uploading	8
Set-and-forget	8
How Automatic Video Uploads Work:	8
4. Play your videos from the mobile app	9
KartaLink Quick-start guide	3

Introduction

KartaLink is a small computer designed to backup the dashcam video of your car and streamline access through an easy-to-use app. At the moment it works best with Tesla cars.



**Images are not printable; for demo purposes only.*

1. Setup KartaLink

1.1 What's in the box

The KartaLink Device

The heart of the KartaLink setup, the compact board has 128GB storage, a USB plug and both Wi-Fi and Bluetooth for connectivity.



**Images are not printable; for demo purposes only.*

Connection cable

A standard micro USB cable is included in the box. This cable is used for powering the KartaLink device and connecting to your car.

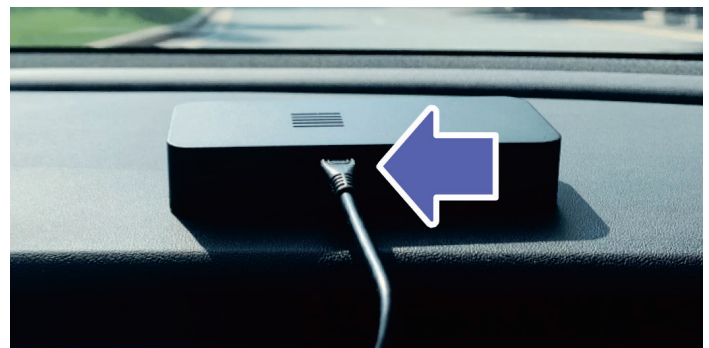


**Images are not printable; for demo purposes only.*

1.2 Installation

Connect the cable

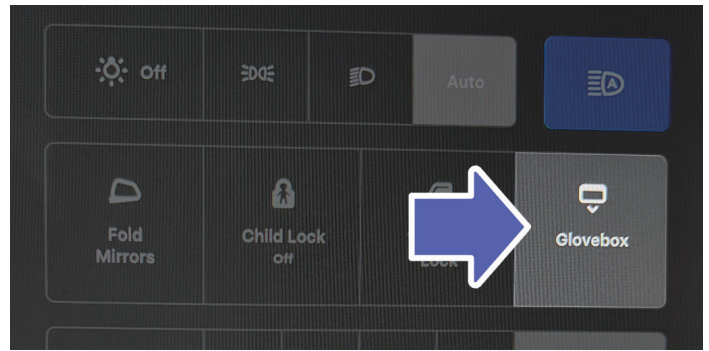
Remove the cable from the box and insert the Micro USB port into the board.



**Images are not printable; for demo purposes only.*

Open the glovebox

For Tesla: Open the glovebox from the Control screen of the car.



**Images are not printable; for demo purposes only.*

Connect to the car

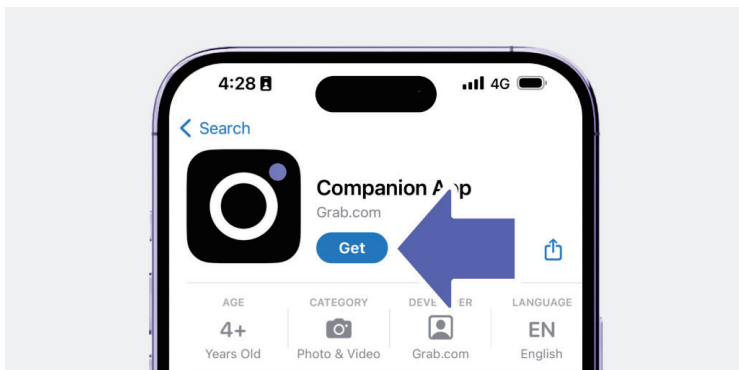
Remove the default USB stick and insert the KartaLinks USB cable. Once inserted, connection is made automatically and the device will store the recordings in a loop like a USB stick, and sync to the KartaLink cloud when Wi-Fi is configured (see next step) and nearby.



**Images are not printable; for demo purposes only.*

2. Pair with the KartaLink app

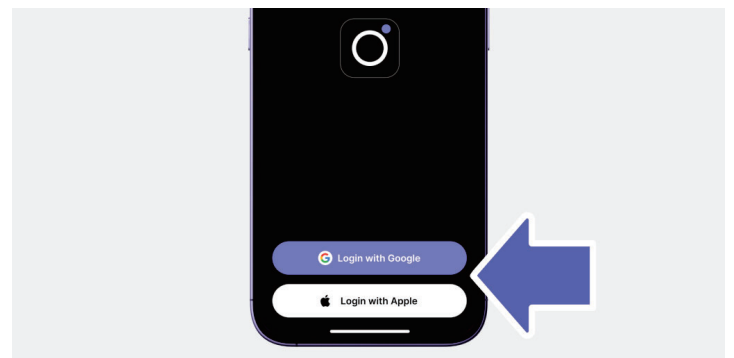
The mobile app is available for iOS devices, with Android coming soon.. Search for "KartaLink" on AppStore and download the app.



**Images are not printable; for demo purposes only.*

Login

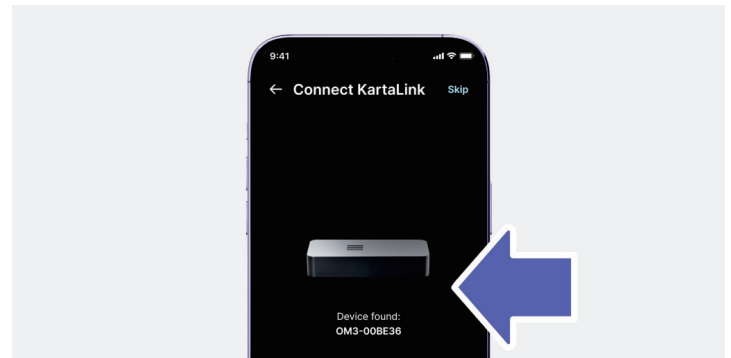
Launch the app and os Google or Apple login.



**Images are not printable; for demo purposes only.*

Pair your device

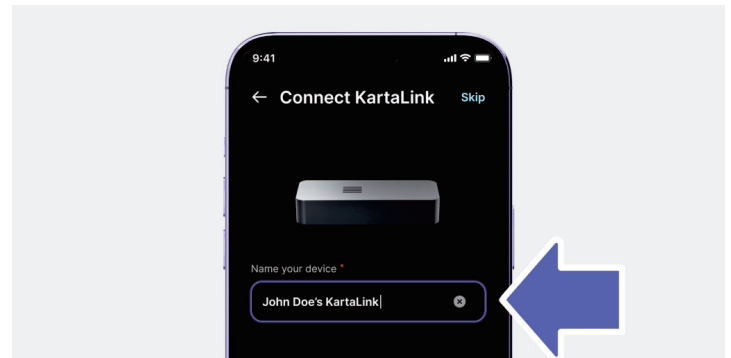
Once logged in, proceed with the pairing process when you're close to your car. Select the device and continue.



**Images are not printable; for demo purposes only.*

Name your device

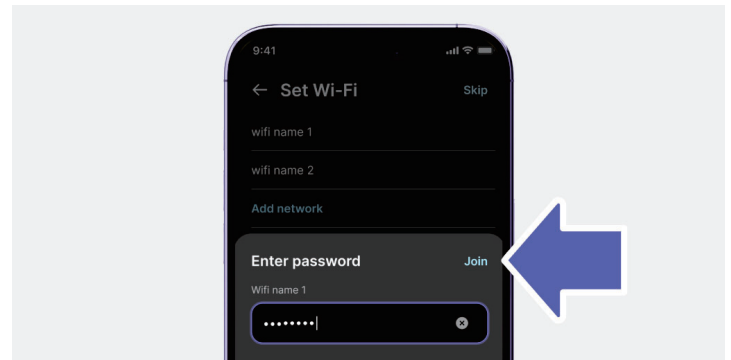
When connecting to KartaLink, you can customize the naming of your device. Enter the desired name and hit Add.



**Images are not printable; for demo purposes only.*

Connect to Wi-Fi

When KartaLink successfully connects, you can connect the board to your local Wi-Fi network. Select your network and enter the password. Known Wi-Fi networks will be used to upload your videos to the cloud, in order to see them in the app.



**Images are not printable; for demo purposes only.*

3. Uploading

Set-and-forget

Experience the convenience of having your videos uploaded automatically to the cloud. Once you've parked your car and a pre-configured Wi-Fi connection is available, your Tesla's footage seamlessly syncs to the app, allowing you to access and review your drives without any manual intervention.

How Automatic Video Uploads Work:

1. **Automatic Sync:** Just park your car and ensure it's within range of a configured Wi-Fi network. The system automatically starts uploading the videos and associated metadata to the cloud, without requiring any further action from you.
2. **Monitoring Upload Progress:** To keep you informed on the status of your uploads:
 - **Open the KartaLink app:** Launch it on your device whenever you wish to check the upload status.
 - **View Upload Status:** The app provides real-time updates on whether your device is currently uploading and displays the volume of data pending upload.
 - **Track Progress:** Easily monitor the upload process to ensure that all your footage is being securely and efficiently transferred to the cloud.

This automated process is designed to offer you peace of mind, knowing that your Tesla's drives are being archived without any required effort on your part, ready for you to visualize at your convenience.

4. Play your videos from the mobile app

Once your driving session's videos have been successfully uploaded to the cloud, you can view them anytime through the KartaLink App.

Simply follow these steps to start:

- **Open the KartaLink app:** Launch the app on your device.
- **Access your trips:** The uploaded drives will be readily visible within the app, organized chronologically for easy navigation.
- **Play Footage:** Select any drive to view. You can watch the recorded footage from all available cameras, and for a comprehensive understanding of the drive, a GPS trail accompanies the video playback.

This functionality enhances your Tesla ownership experience by making it effortless to revisit your drives, be it for checking on specific events or simply reliving your journeys.

Note: You can access video files from the device by mounting it to a computer same as a USB stick. If an important event is happening while driving, you can copy it using this method to avoid overwriting before cloud syncing.

5. FCC Statement

This equipment has been tested and found to comply with the limits for a Class B digital device, pursuant to Part 15 of the FCC (Federal Communications Commission) Rules. These limits are designed to provide reasonable protection against harmful interference in a residential installation. This equipment generates uses and can radiate radio frequency energy and, if not installed and used in accordance with the instructions, may cause harmful interference to radio communications. However, there is no guarantee that interference will not occur in a particular installation.

If this equipment does cause harmful interference to radio or television reception, which can be determined by turning the equipment off and on, the user is encouraged to try to correct the interference by one or more of the following measures:

- Reorient or relocate the receiving antenna.
- Increase the separation between the equipment and receiver.
- Connect the equipment into an outlet on a circuit different from that to which the receiver is connected.
- Consult the dealer or an experienced radio/TV technician for help.

This device complies with part 15 of the FCC Rules. Operation is subject to the following two conditions: (1) This device may not cause harmful interference, and (2) this device must accept any interference received, including interference that may cause undesired operation.

Changes or modifications not expressly approved by the party responsible for compliance could void the user's authority to operate the equipment.

FCC Radiation Exposure Statement

This equipment complies with FCC radiation exposure limits set forth for an uncontrolled environment. This equipment should be installed and operated with a minimum distance 20cm between the radiator & your body.