

Axglo e5

ELECTRIC GOLF PUSH CART

INSTRUCTION MANUAL

REGISTER ONLINE

www.axglo.com/warranty-registration

Before using the Axxlo e5 electric golf push cart for the first time, please take a few minutes to read this Manual to ensure that you can make full use of your electric push cart.

REGISTER ONLINE

www.axxlo.com/warranty-registration

CONTENTS

| | |
|---|----|
| Find Your Serial Number..... | 01 |
| Remote Control..... | 02 |
| Battery Maintenance and Recommendations..... | 03 |
| Battery Charging/Maintenance..... | 04 |
| Battery Use..... | 05 |
| Unfold Your Cart | 06 |
| Safe Use of Your Cart..... | 07 |
| Safety Facilities/Protecting Your Cart..... | 08 |
| Equipment Overview..... | 09 |
| Central knob | 10 |
| Use of Cart/Power Supply and Battery Level..... | 12 |
| Functions and Operation of Remote Control..... | 13 |
| Pairing Remote Control..... | 16 |
| Use of USB Charging Port/Tips..... | 17 |
| Instructions for Use of Client APP..... | 18 |
| Safe Parking..... | 21 |

Find Your Serial Number

Find Your Serial Number

The serial number of your electric push cart is located at the bottom of the slot in the main pipe. This number is required when you register for the warranty online and should be properly kept.

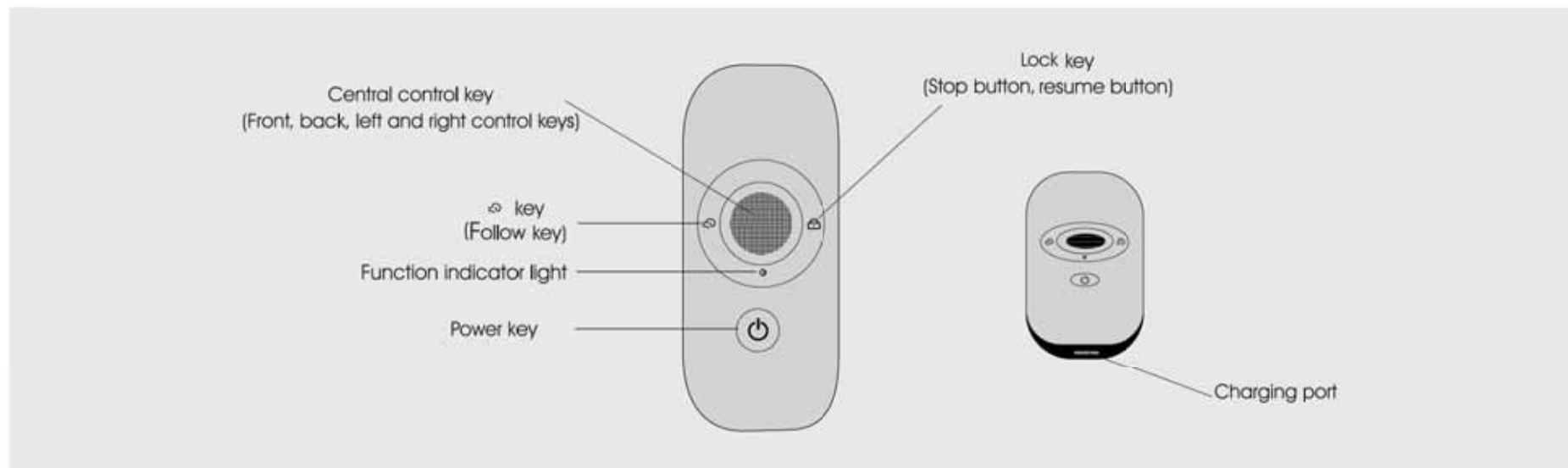
The number shall also be marked on the box of your electric push cart received. Please properly keep the packing box in case you need to return the product for any reason. You must also keep the proof of purchase in case your electric push cart needs to be repaired under the warranty.

If the original packaging box is lost when the product is returned, we can send an original box with all costs to be borne by you. Please note that the battery and charger do not require the original package; but we strongly suggest retaining the original package to avoid damage in transit.

Please note down the serial number of your electric push cart here for future reference.

| | | | | | | | | | | | |
|--|--|--|--|--|--|--|--|--|--|--|--|
| | | | | | | | | | | | |
|--|--|--|--|--|--|--|--|--|--|--|--|

Remote Control



- The remote control contains a rechargeable lithium battery.
- The remote control can be charged through the USB cable, and the charging port is located at the bottom of the remote control.
- The "Power" key above the charging port will change to red during charge, and change to blue when it is fully charged.
- If your remote control runs out of battery during the use of the electric push cart, you can charge the remote control with the USB port on the cart.

Please note that charging the remote control through the USB port will consume the power of the cart and long-term charging will lower the battery level.

Battery Maintenance and Recommendations

Battery Maintenance and Recommendations

- Batteries must be recharged as soon as possible after each use.
- Please ensure that only the batteries supplied by Axglo are charged with the Axglo dedicated charger. The Axglo battery charger is specially designed according to the battery manufacturer's requirements. It can be used to charge the Axglo lithium batteries only.
- The charger can only be connected to grounded sockets and only be opened and maintained by authorized personnel. Unauthorized opening will void your warranty.
- The battery must be charged on a dry surface without carpet and at a temperature of 10°C to 30°C . Charging out of this temperature range is not recommended as it will reduce the battery capacity.
- When you connect the battery with the cart, please slide the battery into the inner slot for the battery pack in the cart main pipe and push it down slightly. You will hear a "click" sound. This will ensure proper connection between the battery and the cart.



Battery Charging/Maintenance

Battery Charging

1. Make sure that the power switch of the cart is turned off or remove the battery from the cart before folding the cart (press the grey switch with your hand, and Pull Up slightly with the convex lines on both sides of the battery between the thumb and middle fingers).



2. Plug the charger into the power supply.
3. Plug the charger into the charging socket of the battery.



4. When the charger's LED indicator turns green, it means the battery is fully charged and ready to use.

Red - The battery is being charged

Green - The battery is fully charged and ready to be disconnected



5. The charging process takes about 6 hours.
(Please note that the charging process takes about 6 hours depending on the depth of discharge, the first few charges may take a longer time).
6. After charging, please disconnect the charger from the main power supply, and then disconnect the charger from the battery.

Battery Maintenance

- Try to not wet the battery (for example, do not immerse the battery in water, prevent the cart from falling into a deep pit, and do not wash the cart before the battery is removed).
- Dropping the battery may cause damage to the inside of the battery
- Do not collide batteries with other objects.
- Remove dirt with a damp cloth.

Battery Use

Battery Use

Recommendations for battery dormancy in winter

Due to various reasons, if you do not intend to use the battery for a long period of time. For example, in the winter time, it is recommended to store the battery after half charge. For this example, use the battery as usual during a golf match and charge it for 3 hours after the match. Recharge the battery (full charge) before using it again. We all know that leaving the push cart aside for a long

time is not always planned in advance, but it is a good practice to follow the above recommendations when you do not use the battery for a period of time. Following this procedure will extend the life of the battery. Be sure to disconnect the charger from the battery at all times after charging.

Battery management system (BMS)

The Axxglo battery comes with a comprehensive battery management system (BMS) to protect the battery from overuse, high current, deep discharge, and overcharge. When the battery is delivered, there may be no output because the BMS is designed to maximize its safety during transportation. Make sure the battery is fully charged before connecting to your cart, as this will activate the BMS and effectively "switch on" the battery. During deep discharge or long-term storage, the BMS sometimes shuts down the battery. The battery will turn on again when fully charged.

The Axxglo cart is designed to work with a BMS system equipped with the battery, and the voltage is also synchronized to work with the battery. In any case, if the voltage of the battery is below the minimum warning voltage on the cart, the BMS may disable the battery to protect it. If this happens, recharge your battery. Please note that the battery voltage drops rapidly at the end of the cycle, so it is not recommended to make too many holes as the BMS will turn off the battery for protection.

Unfold Your Cart

Folding



Release the lower lock trigger; grab and hold the handle with your one hand; and then release the upper lock trigger, fold the cart in the direction of the arrows shown.



Press the gray square button on the front fork to release the front wheels, then bend the front wheels downward.



Lock the upper and lower lock triggers.



Unfolding

Pull both rear wheels of the electric cart outwards for about 3 cm



While holding the gray circular spring switches on both sides, pull up the front wheels to lock it in place.



Release the upper and lower lock triggers, step and station the front fork joint with your foot, grab the handle with your one hand and pull your cart backward to unfold it.



Lock the upper and lower lock triggers.



Safe Use of Your Cart

Safe Use of Your Cart

The following does not include all possible scenarios. Caution should be top priority.

When using and operating the cart:

- Your Axxlo cart is designed to transport golf bags and clubs. Using the cart for other reasons may cause damage to the cart and cause injury to the users.
- Please follow the instructions to fold and unfold the cart to avoid damage.
- Maximum load capacity: 20kg. Please do not exceed the load capacity during use. Please do not use any accessories not designed and manufactured by Axxlo.
- Do not transport any other equipment.
- The cart is not designed to transport people.
- When going uphill, do not try to assist the cart by pushing it with your hands.
- Do not direct the cart at other people or other cart with the remote control.
- Submerging the cart in water (such as in a lake) will cause damage to the cart.
- Do not operate the cart if you are intoxicated.
- Before transportation, the battery must be disconnected from the cart.
- When using the cart in a limited space (such as a parking lot) or near water (such as crossing a bridge), it is recommended to use the manual push mode to ensure that you can control the cart.
- Do not let the cart run out of your sight. Always maintain proper attention and control.
- When the power is turned off, the cart will slide if it is parked on a slope. When parking on a slope, do not turn off the power and remember to press the stop button.
- Axxlo will not be responsible for any damage or injury caused by improper use and Self-dismantling.

Safety Facilities/Protecting Your Cart

Safety functions:

Safety cut-off function: When the cart is operated by remote control, if no command is sent to the cart (No keys are pressed) for more than 180 seconds, the cart will automatically cut off the power of the motor; if the cart travels beyond the remote control range, the cart will also automatically cut off the power of the motor (the remote control will send out a vibrating beep alarm).

To restart, you just need to press the "Start/Stop" key to resume the normal use of the cart.

Although your Electric Push Cart is weatherproof, please follow the following simple rules to help protect your cart:

- Do not store your cart in the outdoors.
- When it rains heavily, protect the cart from the rain and try to cover it with an umbrella.
- Wipe off any water on the cart before storing.
- Do not use a high-pressure cleaning machine to clean the cart. To prevent water from damaging the cart, please use a soft dry towel to dry it.

- When the cart is running, please avoid the nearby areas where high-pressure air hoses are used.
- The cart is designed to require only simple maintenance. However, we recommend that your cart be checked regularly to ensure that:
 - No excess mud or dirt accumulates.
 - The front wheel is unclogged and can turn freely.
 - The main folding track is kept clean and well lubricated. Only original parts can be used when repairing the cart.
- After each use of the golf push cart, please use water to rinse the bottom frame to clean any excess mud, dirt or grass left on the cart. Please make sure the slide block channels are clear from any dirt or mud as this can cause the slider block to jam. If jammed, this will cause restriction when folding down the cart and also potentially damaging the golf push cart if extra force is exerted. Regular cleaning and lubrication of the slider block will be needed for the golf push cart to perform at its best.



Equipment Overview



- 1. Handle
- 2. Umbrella holder
- 3. Storage bin
- 4. Beverage holder

- 5. Bag holder
- 6. Riser pipe
- 7. Left motor
- 8. Right motor

- 9. Left rear wheel
- 10. Right rear wheel
- 11. Battery
- 12. Battery charging port

Equipment Overview



- 17. Main switch button
- 18. Front fork joint button
- 19. Bluetooth display board
- 20. Lower lock trigger
- 21. Upper lock trigger

Central knob



Power Switch

1. The power switch is the circular button (i.e., central knob) below the display. Press and hold the button for 2s to turn on/off the power. Note: The electric golf cart will automatically power off and turn off the display if the electric golf cart is left idle for 180s after being turned on and unlocked. The electric golf cart will not power off or turn off screen automatically under a locked state.
2. After turning on, the electric golf cart will enter the locked state, and the display will show "locked" icon, flickering "Bluetooth" icon and "0.0" speed and driving mileage icon.
 - a. When the "Locked" icon is on, the electric golf cart may not be able to enter any mode. In such a case, please unlock the electric golf cart through the corresponding APP or remote control to enter desired modes.
 - b. The flashing Bluetooth icon indicates that it has been connected to the Bluetooth of your remote control or mobile phone.
 - c. "0.0" speed icon will change from "0.0km/h" to "0.1km/h" when the cart is started, and the speed will directly rise to the set speed value.

Central knob

Switching & Using Assisted Driving Mode

- 1: Press and hold the power switch for 2s to power on (vehicle state: Locked, screen shows locked icon), unlock the vehicle through the corresponding APP or remote control, and then continue the next step.
- 2: Press the central knob quickly twice to enter assisted speed control (a palm icon will appear on the screen).



- 3: Rotate the central knob clockwise: Accelerate (speed shown on the screen: 0-9.0km/h); the max. speed is 9.0km/h.
- 4: Rotate the central knob counter clockwise: Decelerate (speed shown on the screen: 9.0-0km/h), the min. speed is 0km/h. Since the cart will stop when the speed drops to 0km/h, it is advisable to turn the knob slowly instead of quickly entering the minimum speed, otherwise the cart will activate the emergency stop, causing certain hidden dangers.
- 5: Press the central knob once: This exits the assisted speed control mode (at this time, the cart is in locked mode).
- 6: Press the central knob again: The Cart is now unlocked and in the standby state.

Use of Cart/Power Supply and Battery Level

Use of Cart/Power Supply and Battery Level

Use of Electric Push Cart

When you use the cart for the first time, we recommend that you use it on an open golf green. The speed and steering characteristics of the cart vary depending on the road surface.

On smooth surfaces and on different greens, the weight of the golf bag can affect the cart speed and steering.

Power supply and battery level



There is a set of 5 LED indicators on the display.

After loading the battery to the cart, turn on the power and the set of indicators will be on.

If four LED indicators on the right are white and one is red, it means that the cart is fully charged. The number of indicators indicates the battery level (the specific percentage of the total battery level can be seen in the mobile APP). When the LED display only shows the red indicator, it reminds you that the battery of the cart needs to be charged (with battery level of about 25%), and the cart can run for about 1 hour (the range is about 5Km). When the display only shows

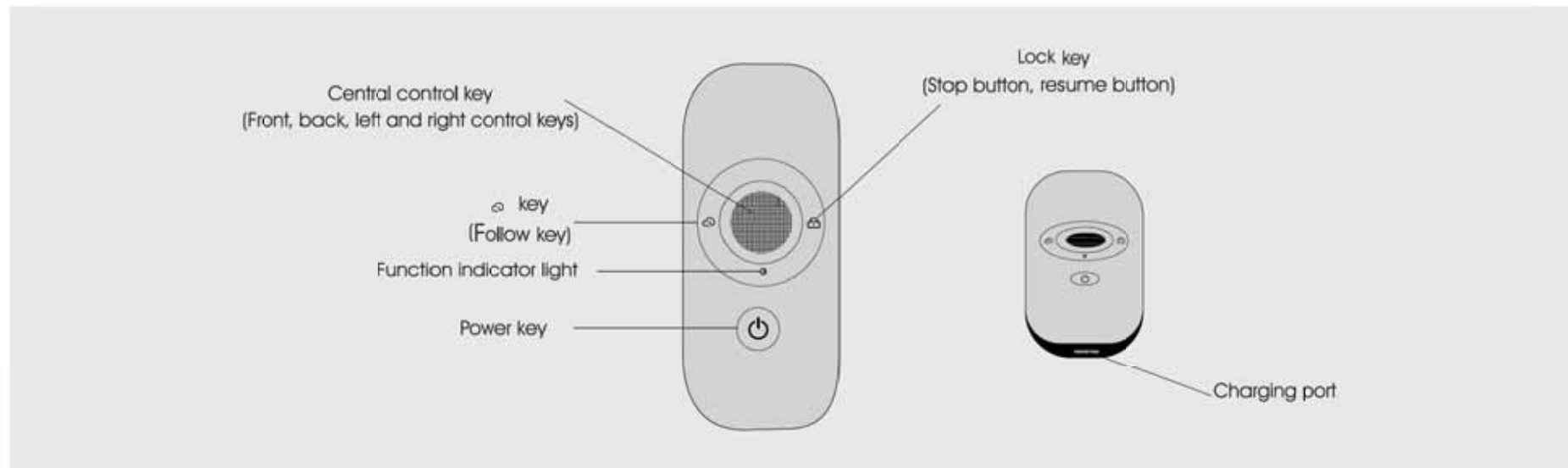
the red indicator and the battery level drops to 15% (refer to the mobile APP for the percentage of battery level), the power indicator box will flash on the display, and the cart will have low sensitivity and speed, especially when turning. When the display only shows the red indicator and the battery level drops to 10%, the remote control will intermittently send out an alarm through vibration, and the cart will have lower sensitivity and speed and become out of control, especially when turning. When the battery level drops to 5%, the remote control will vibrate at a shorter interval, and the cart will have even obviously lower sensitivity and speed, especially when turning.

The cart is designed to protect the battery from being completely discharged. If the battery level drops too low, the cart will cut off the power for the motor.



Functions and Operation of Remote Control

Functions and Operation of Remote Control



1、Power key (arrow shape)

When in use, press this key once and the power key will light blue. it means that the remote control has started normal operation; if the power key lights off, it means that the remote control is powered off; if the power key lights red, it means the remote control has low battery and needs to be charged. During the use of the cart, the remote control can be charged through the USB port of the cart. In other scenarios, Insert the USB cable into the (specification) interface of the power adapter and connect the adapter to the power socket.



Functions and Operation of Remote Control

2、Central control key ("O" shaped, frosted surface)

a. Manual driving mode: The cart running indicator on the display will be on.



Gently press and hold the key with your finger, and push it upward to enter manual driving mode; release the key and the cart will immediately stop movement.

Gently press and hold the key with your finger, and push it upper left to enter "turning left" mode; release the key and the cart will immediately stop movement.

Gently press and hold the key with your finger, and push it upper right to enter "turning right" mode; release the key and the cart will immediately stop movement.

Gently press and hold the key with your finger, and push it downward to enter manual reverse mode; release the key and the cart will immediately stop movement.

In general, it is not recommended to use the reverse mode. If it is used, you should operate the cart at a lower speed.

b.Remote cruising Control


The central control key of the remote control has Remote cruising Control, Quickly push up the toggle twice to enter Speed 1 Cruise Control(0-4mk/h), and pushed up again to enter Speed 2 Cruise Control(5-7mk/h). When the central control key is pushed up for the third time, the cart enter Speed 3 Cruise Control (7-9mk/h), which is the maximum speed of the car. Push the toggle down gently, and the electric car returns to manual mode.

Gently press the button with your finger and turn left to enter the "turn left" function:release the key and resume the Remote cruising Control in the direction of the front.

Gently press the button with your finger and turn right to enter the "right steering" function. ;release the key and resume the Remote cruising Control driving mode in the direction of the front.

Functions and Operation of Remote Control

3、Follow key (key)


Gently press this key once to enable the auto-follow mode and the  pattern on the display will light up. In auto-follow mode, the radar detector at the front of the electric cart (marked on the attached figure of whole cart) will automatically track the remote control at the set distance; there should be no obstacle (including human) between the transceiver on the top of the remote control and radar detector, and the remote control should be kept upright. Otherwise, signal may be affected. Press the key again to exit the function.

4、Lock key

This key is the "lock, unlock and stop" key (after turning on the power switch of electric cart and remote control, the display on the cart shows "The cart is unlock and you can enter manual operation"). Gently press the right key on the remote control, and the display will show the lock sign (at this time, the cart cannot be operated manually). Gently press the right key and the lock sign on the display will disappear (at this time, the cart can be operated manually or by remote control). When parking on a slope, please do not turn off the power and remember to press this key. At this time, the lock sign on the display will light up. Turning off the power would disable the electric braking system of the cart.

5.Function indicator light

(1) : The central control key is pushed up two times quickly and continuously to enter the cruise function. At this time, the color of the remote control function indicator is yellow.

(2) : The left button ( key) of the remote control is the follow key (also known as the recall key).When pressed to enter the follow function (within 2.5 meters), the color of the indicator light of the remote control function is green.

(3) : The right button of the remote control is the lock key (also known as the unlock key), and the color of the remote control function indicator is red when entering the lock function.

(4) : Press to unlock (lock key), the remote control function indicator light color indicator light is blue when standby.

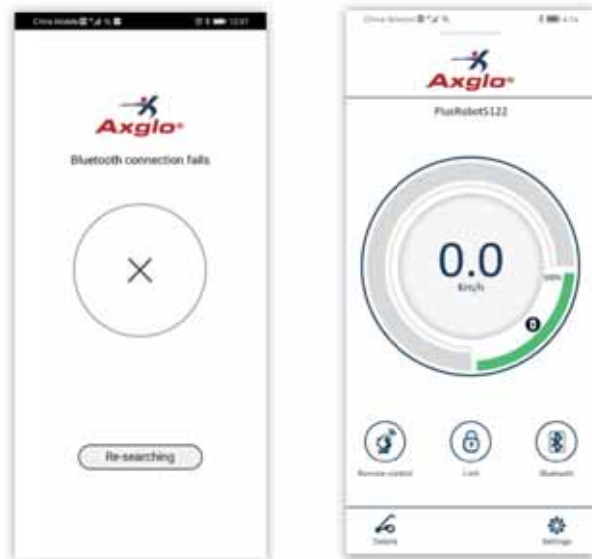
Pairing Remote Control

1. Scan the QR code to download the APP (the QR codes for iOS, Android and Google are attached)



2. Enable the Bluetooth of your mobile phone
3. Turn on the cart
4. Enter the APP

Press "Search Again" to enter the search screen



Press "Settings" to enter "Remote Control Pairing" and press the "»" icon (there will be no change on the mobile phone screen)

Use two fingers to gently press and hold the "⏮" icon key and "Stop" key on the remote control.



Use another finger to press and hold the power switch for about 3s. Do not release your fingers until the "LED" indicator turns blue and the remote control vibrates quickly. When the Bluetooth icon on the display flashes, it indicates that the pairing is completed and the remote control can be used.



Use of USB Charging Port/Tips

Use of USB charging port

- Your cart has a USB charging port that can charge your mobile device while you are using the cart. If your remote control needs to be charged, it can also be used to charge the remote control.
- Insert the USB cable into the charging port at the bottom of the remote control.
- The device will continue to be charged as long as the cable and the battery are connected.
- It is important to note that the charging speed will be slower than the AC adaptor, and it is similar to charging via a USB port of PC.
- The USB charger takes power from the cart's battery, and continuous charging will lower the battery level. When the battery capacity reaches a preset level, the cart will close the USB port.



Tips

- Be sure to press the lock key when the cart is unattended.
- The cart is specially designed for the fairway and designed designated trails. Do not attempt to steer the cart through a sand pit or deep puddle. Do not attempt to push the cart down steps or high curbs.
- Do not overload your golf bag, as the extra weight increases the drain on battery level and can also affect the cart's speed and steering characteristics. Very heavy bags can also add unnecessary load to the motor. Keeping the cart travelling on the fairways helps save battery power, while driving the cart on grass and rough terrain can increase battery consumption.

Instructions for Use of Client APP

1、 Cart settings and mobile APP settings

Figure: Scan the QR code to download the APP "Ayglo" on Android, iOS and Google



Ayglo APP

- a. Enable the Bluetooth of your mobile phone, open the APP on mobile phone, press "Search Again" and you will enter the "Connecting Bluetooth" screen; after connecting the cart's Bluetooth (the Bluetooth icon on the display will flash continuously), you can enter the "Bluetooth Remote Control", "Lock", "Bluetooth Connection", "Details" and "Settings" screens.



Instructions for Use of Client APP

- b. Press "Bluetooth Remote Control" to enter the speed adjustment screen, which displays "0.0km/h" on the top, the battery level of the cart and local temperature on the lower left; touch remote control and the max speed set before leaving the factory.
- c. Touch the "small dot" on the horizontal line below with your finger and slide it to the right to increase the speed or to the left to lower the speed.



2、Settings

Press the "Settings" on the lower right of the mobile APP to enter the screen.

The "max speed of remote control and auto-follow" can be set between 0.0km/h and 9.0km/h, which has been set to 6 before leaving the factory. It is recommended to set the value between 6.0km/h and 8.0km/h.



3. Attitude calibration

If the cart has been used for a long time, and there is a slight deviation in travelling or steering, you can press the attitude calibration "»" icon to enter the screen, and a prompt of "The cart needs to be locked before sensor



calibration, do you want to continue?" will be displayed. Press "OK" and a prompt of "Please keep the cart absolutely still during the calibration of the attitude sensor. The calibration process will take about 3 seconds, do you want to continue?" will be displayed. Press "OK" and wait for 3s until the lock icon on the cart display disappears, and the calibration is completed before it can be used normally.

4. Calibrate following angle

When attitude calibration is enabled, the cart may not have straight line driving along with remote control in automatic cruise mode. The angle of the cart can be calibrated through this function: Press the "dot" on the lower transverse line to calibrate the left/right angle.



5. Remote Cruising Control

Press the "dot" on the lower transverse line to adjust the gear.

Speed 1 Cruise Control (0-4mk/h)

Speed 2 Cruise Control (5-7mk/h)

Speed 3 Cruise Control (7-9mk/h)



Safe Parking

When parking on a slope, please do not turn off the power and remember to press the stop key (cloud key). At this time, the lock icon on the display will light up. Turning off the power would disable the electric braking system of the cart.

Instructions: Keep the vehicle stationary when turning on the power switch. If you turn on the power switch while pushing the vehicle, the tool icon will appear on the screen, and the vehicle cannot be used properly. In this case, turn off the power switch and perform operations as prompted.

FCC Caution:

This device complies with part 15 of the FCC Rules. Operation is subject to the following two conditions: (1) this device may not cause harmful interference, and (2) this device must accept any interference received, including interference that may cause undesired operation. Any changes or modifications not expressly approved by the party responsible for compliance could void the user's authority to operate the equipment.

NOTE: This equipment has been tested and found to comply with the limits for a Class B digital device, pursuant to Part 15 of the FCC Rules. These limits are designed to provide reasonable protection against harmful interference in a residential installation. This equipment generates, uses and can radiate radio frequency energy and, if not installed and used in accordance with the instructions, may cause harmful interference to radio communications. However, there is no guarantee that interference will not occur in a particular installation.

If this equipment does cause harmful interference to radio or television reception, which can be determined by turning the equipment off and on, the user is encouraged to try to correct the interference by one or more of the following measures:

- Reorient or relocate the receiving antenna.
- Increase the separation between the equipment and receiver.
- Connect the equipment into an outlet on a circuit different from that to which the receiver is connected.
- Consult the dealer or an experienced radio/TV technician for help.

To maintain compliance with FCC's RF Exposure guidelines, This equipment should be installed and operated with minimum distance between 20cm the radiator your body: Use only the supplied antenna.

UWB devices may not be employed for the operation of toys. Operation onboard an aircraft, a ship or a satellite is prohibited per 15.521(a). Antennas mounted on outdoor structures such, as antennas mounted on the outside of a building or on a telephone pole, or any fixed outdoors infrastructure are prohibited for use with this device per 15.519(a).

ISED Statement:

English: This device contains licence-exempt transmitter(s)/receiver(s) that comply with Innovation, Science and Economic Development Canada's licence-exempt RSS(s). Operation is subject to the following two conditions:

(1) This device may not cause interference.

(2) This device must accept any interference, including interference that may cause undesired operation of the device.

The digital apparatus complies with Canadian CAN ICES-3 (B)/NMB-3(B).

French: Cet appareil contient des émetteurs/récepteurs exempts de licence qui sont conformes aux RSS exemptés de licence d'Innovation, Sciences et Développement économique Canada.

L'exploitation est soumise aux deux conditions suivantes :

(1) Cet appareil ne doit pas provoquer d'interférences.

(2) Cet appareil doit accepter toute interférence, y compris les interférences susceptibles de provoquer un fonctionnement indésirable de l'appareil.

L'appareil numérique du ciem conforme canadien peut - 3 (b) / nmb - 3 (b).

This device meets the exemption from the routine evaluation limits in section 2.5 of RSS 102 and compliance with RSS 102 RF exposure, users can obtain Canadian information on RF exposure and compliance.

Cet appareil est conforme à l'exemption des limites d'évaluation courante dans la section 2.5 du cnr - 102 et conformité avec rss 102 de l'exposition aux rf, les utilisateurs peuvent obtenir des données canadiennes sur l'exposition aux champs rf et la conformité.

This equipment complies with Canada radiation exposure limits set forth for an uncontrolled environment.

Cet équipement est conforme aux limites d'exposition aux rayonnements du Canada établies pour un environnement non contrôlé.

This equipment should be installed and operated with minimum distance 20cm between the radiator & your body.

Cet équipement doit être installé et utilisé à une distance minimale de 20 cm entre le radiateur et votre corps.