

Shenzhen rich communication technology Co., LTD

Product Specification

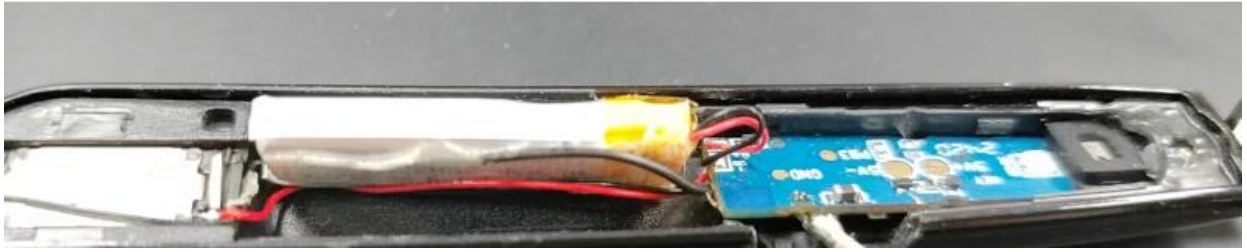
P/N: MLB

REV.: E13

Date: 2024/06/15

Protocol: RAO

PrOduct Specification



Item	Antenna module on zhe system board	Comment
Freq. Range	2400-2500mhz	
Ant.Port Input Pwr. (dBm)	-2.57 (Typ.BT class 2 output power)	
Tot.Rad.Pwr.(dBm)	-1.01db (Input pwr-loss pwr)	
Efficiency(dB)	15.5%	
Gain(dBi)	-1.01	
Input Impendence(ohm)	50	
Polarization Type	V ertical Horizontal	
V.S.W.R	<3.0	

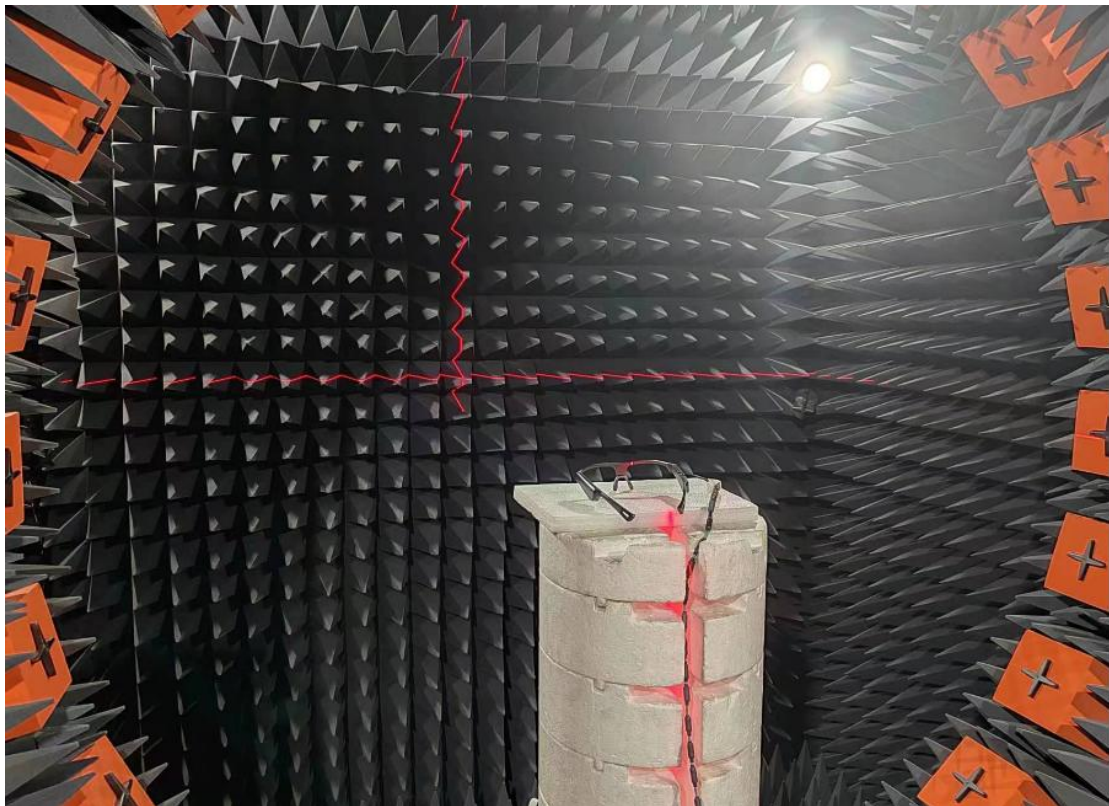
1. SIMITH/LOSS



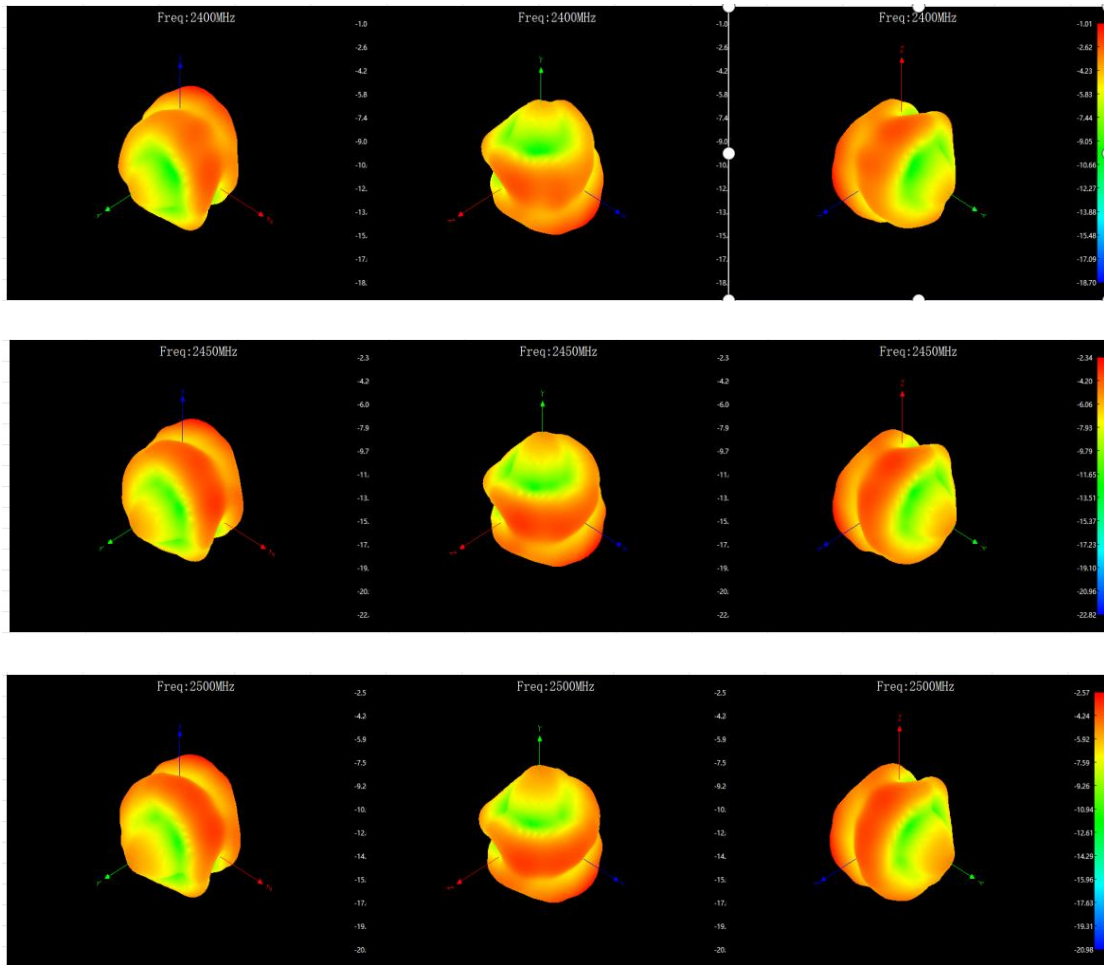
2. Efficiency Gain Table

Frequency/Mhz	MaxGain/dBi	Efficiency / %
2400	-1.01	22.44
2410	-1.17	21.09
2420	-1.62	19.23
2430	-1.63	19.72
2440	-1.99	19.14
2450	-2.34	18.16
2460	-2.14	18.88
2470	-2.27	18.32
2480	-2.47	17.18
2490	-2.51	16.79
2500	-2.57	16.94

3、 TheEnvironment ofAntenna Radiation Patten

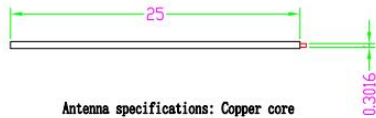


4、3D radiation pattern diagram



REV	LDC'T	DESCRIPTION OF CHANGE	CH'G BY	APP.BY	DATE

Unit: mm



Antenna specifications: Copper core
wire length 25 millimeters

Compliant with RoHS requirements

UNIT IN MM

MATERIAL		DD NOT SCALE DRAWING	DESCRIPTION		MODEL NO.	PROJ.CODE
FINISH/COLOR		TOLERANCES UNLESS OTHERWISE SPECIFIED	E13			
		LINEAR TOL= ±0.05	PART NO.			REV. 01
		ANGULAR TOL= ±1/2°	CAD FILE			
SCALE	DWG. DATE 221228	CHK. DATE	APP. DATE	SHEET 1 OF 1	A4	