



## Test Graphs:



BLE\_1M-Ant1-2402



BLE\_1M-Ant1-2440



BLE\_1M-Ant1-2480



## **11 Antenna Application**

### **11.1 Antenna Requirement**

For intentional device, according to FCC 47 CFR Section 15.203, an intentional radiator shall be designed to ensure that no antenna other than that furnished by the responsible party shall be used with the device. And according to FCC 47 CFR Section 15.247 (b), if transmitting antennas of directional gain greater than 6dBi are used, the power shall be reduced by the amount in dB that the directional gain of the antenna exceeds 6dBi.

### **11.2 Result**

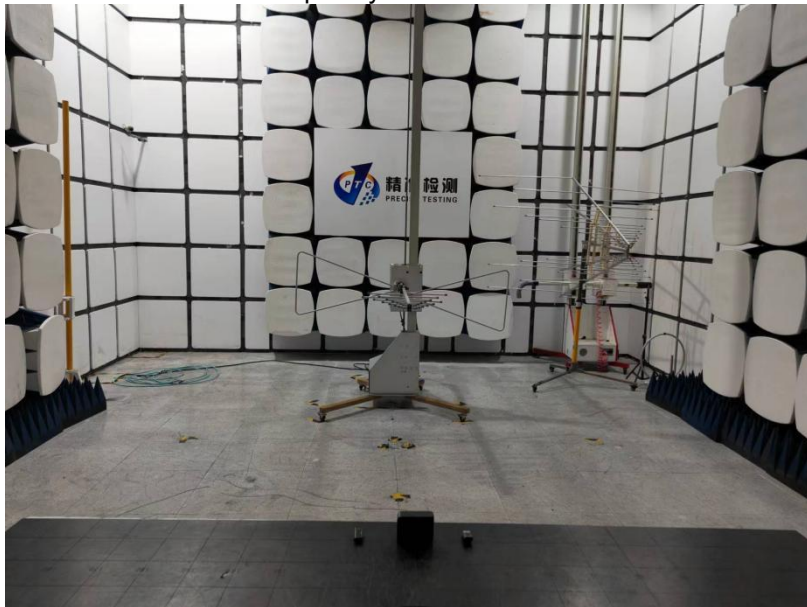
The antenna is PIFA Antenna which permanently attached, and the best case gain of the antenna is -0.41dBi. It complies with the standard requirement.

## 12 Test Setup

Conducted Emissions



Radiated Spurious Emissions  
Test Frequency From Below 30MHz



Test frequency from Above 1GHz





## 13 EUT Photos

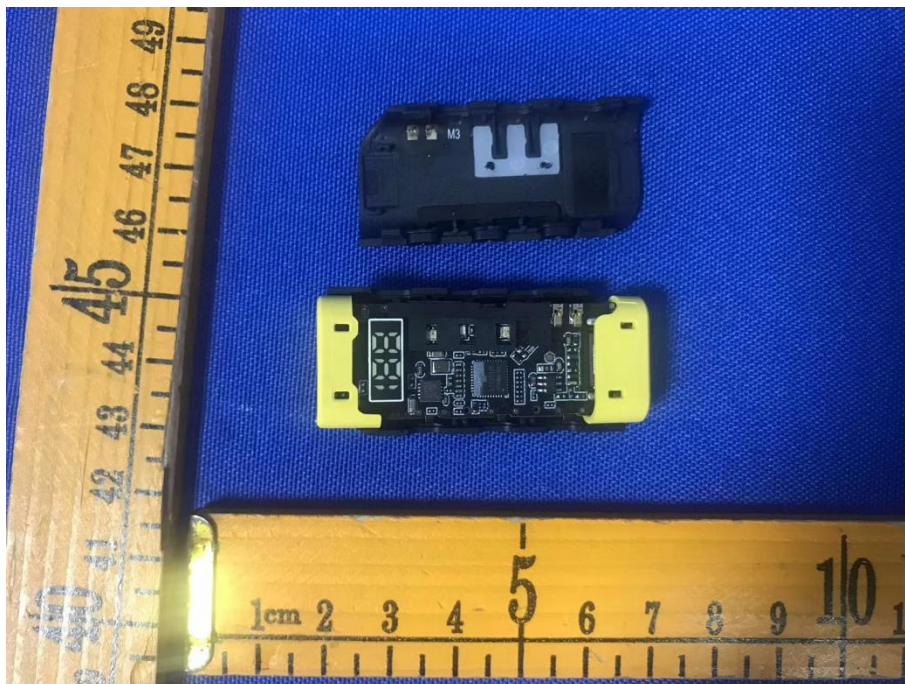




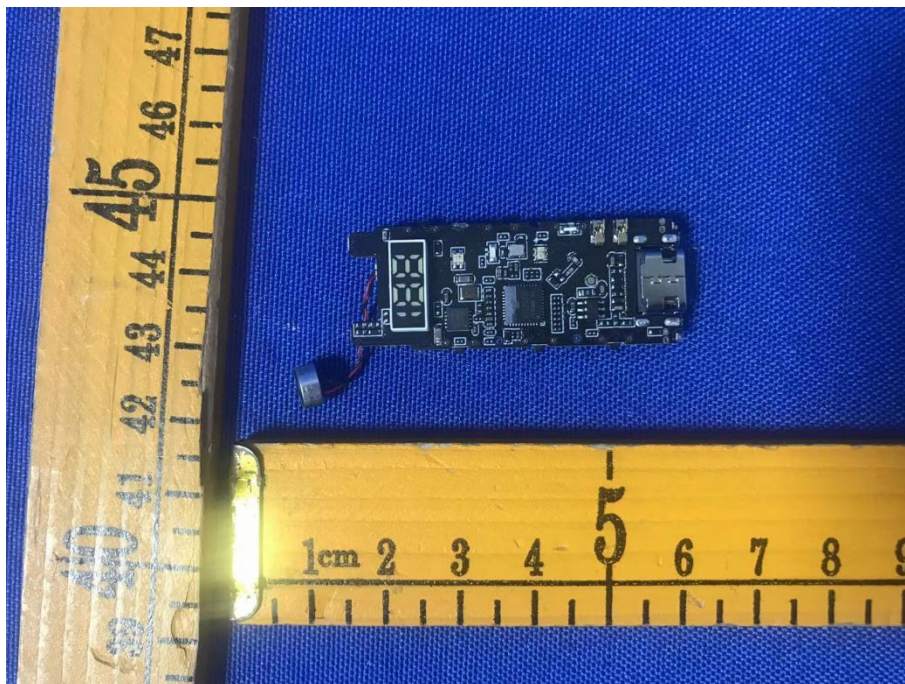
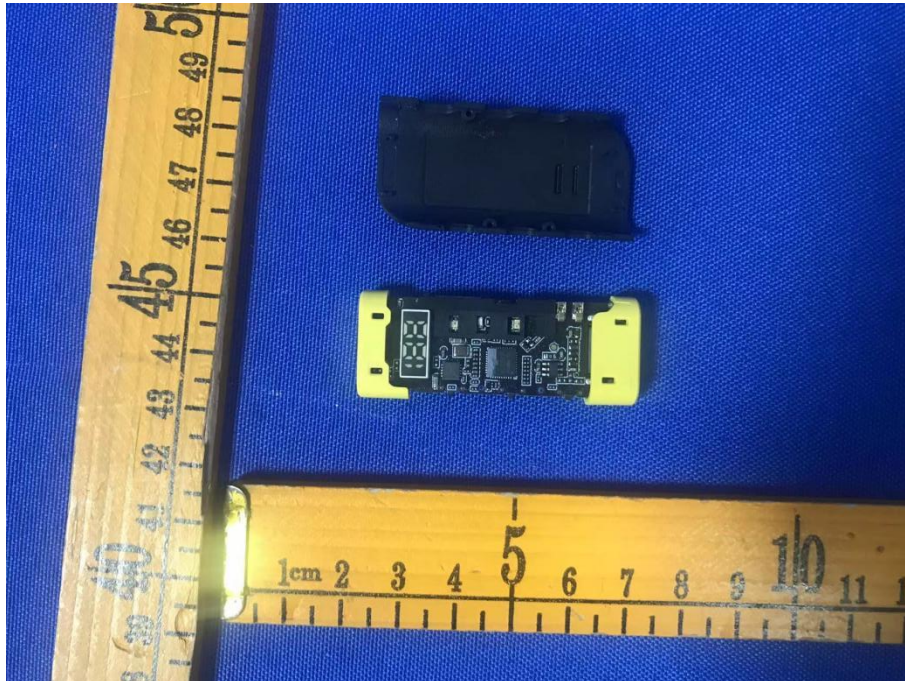




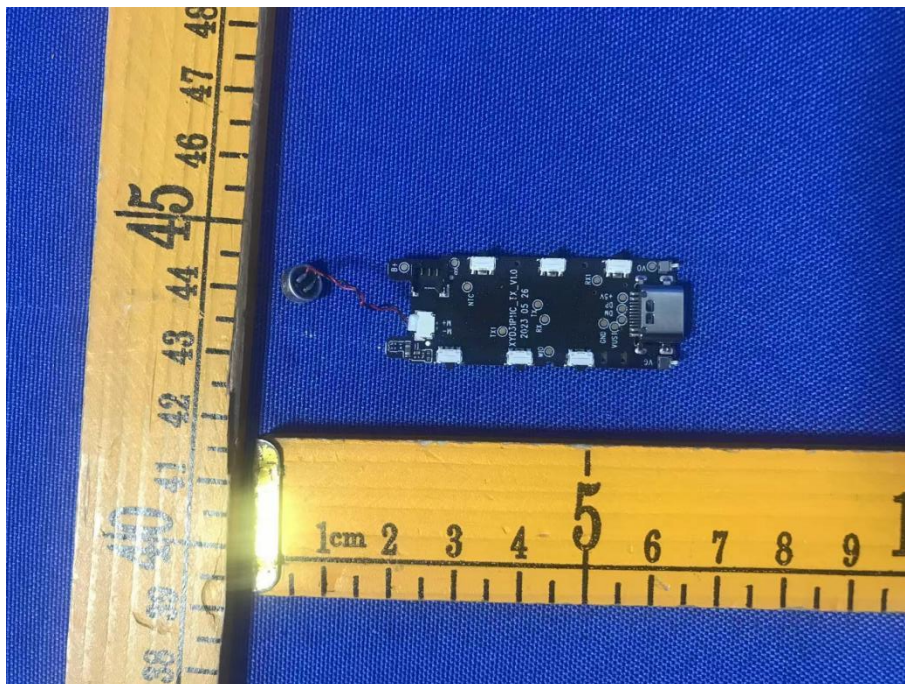
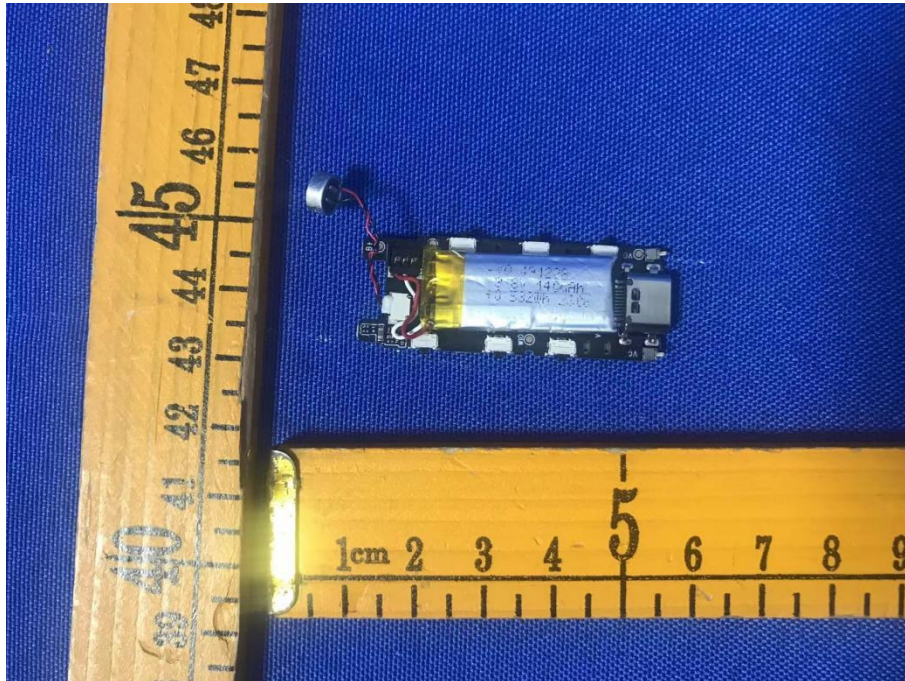




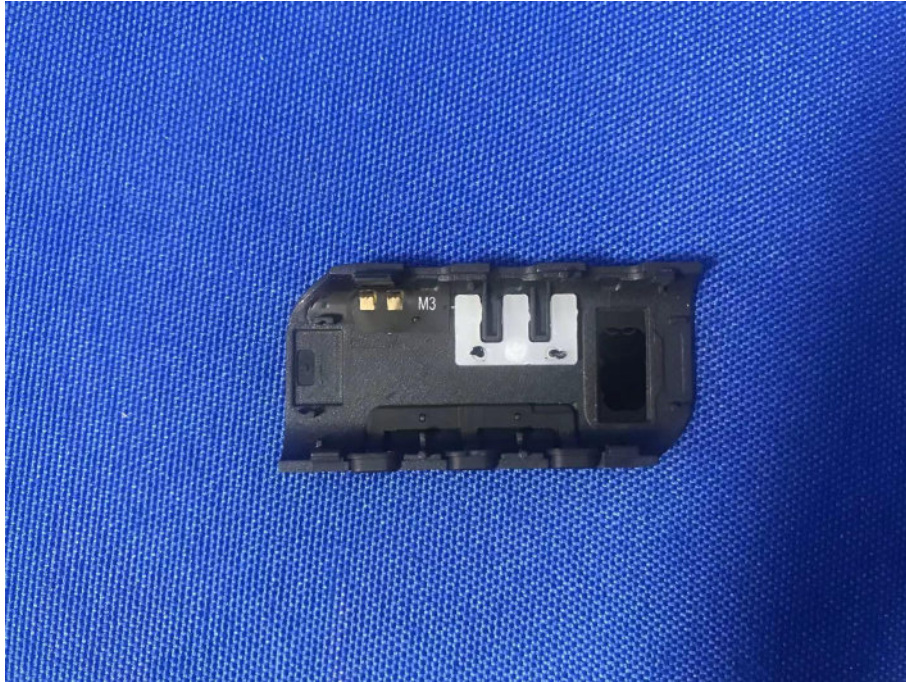
















\*\*\*\*\*THE END REPORT\*\*\*\*\*