

TWS V5.3

Wireless headset

F9

instructions

Specification of Earbuds

- ① Product Name: F9
- ② Wireless version : V5.3
- ③ Protocol: Supports HFP 1.7, HSP 1.2, AVRCP 1.6, SPP 1.2 and PBAP 1.0
- ④ Speaker Diameter : 8mm
- ⑤ Working distance: 10m-20m
- ⑥ Call Time: 4 H (1 time full charged)
- ⑦ Play Music Time: 4 H (1 time full charged)
- ⑧ Standby time:650H (With charging case)
- ⑨ Frequency:2402MHz~2480MHz
- ⑩ Battery type: 3.7V, >30mA Li Battery
- ⑪ Charging Time: 2H
- ⑫ Working Temperature: -10°-55°

Specification of charger case:

- ① Input current: 5V==1A
- ② Output current: 5V==1A
- ③ Battery type: 3.7V
- ④ Charging time: 2H

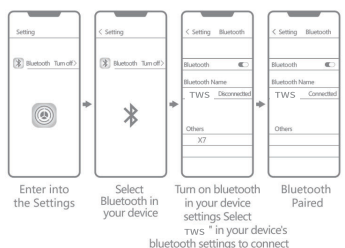
How to operate the earbuds:

- ① Make sure that the charging case has electricity. If the charging compartment is out of power, please fully charge the

charging compartment; Pick up the two earbuds and put them back on the cover. The charging compartment indicator lights up to indicate that there is power. If it does not light, it means no power.)

- ② Take the two earbuds out of the charging case and wear them on the left and right ears respectively. The earphones will automatically turn on and automatically pair; (Voice prompt: power on, left channel, right channel, waiting for connection).
- ③ Turn on the phone Bluetooth and click on the connection pair name " TWS " to connect (voice prompt " Connected").

How to pairing



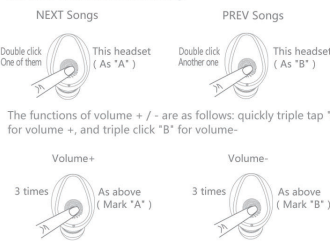
Warming remain

For the first time to use the earbuds or for a long time to no use, please charge the charging case and earphones before. Please keep it in an unobstructed and effective environment within 10 meters. Otherwise, it may be stuck and disconnected.

Indicator description:

- ① **Charge the earbuds:** Put the earbuds into the charging case and cover it to charge. **earbuds indicator:** Lights up red when charging, and red light when fully charged. The charging case flashes green and the light is off after charging.
- ② **Charge the charging case:** Plug the 5V/1A USB into the charging port to charge. During charging, the middle digit of the charging stand display indicates the charging case power. When the number is displayed as "100", the battery is fully charged. **Charging case indicator light:** The charging flashes green light, and the light is off after charging.
- ③ **Charge to the mobile phone:** Charge the mobile phone: Connect USB Cable to USB port of case to charge the mobile phone. **ChargingCase indicator light :** Light will turn green when charging and turn off when fully charged

In master-slave synchronous binaural mode, double-click on one of the headphones is the previous song, and double-click the other headset is the next song!



Single Earbud Mode

Version 5.1 can achieve seamless connection, master-slave synchronization, no need to distinguish the primary and secondary. At present, single ear use does not need to switch signals, only need to connect a good signal name for the first time, and then take out any earphone, can automatically complete the connection. There is no need to pair single ear connection separately. If single ear signal is connected separately, which makes it impossible to use both ears, you only need to delete one ear signal, Team up again manually once again!

Headset signal name

"L" Headset signal name: TWS
"R" Headset signal name: TWS

If you can't use both ears, you just need to delete the single ear signal and manually form a team again! (team building method: turn on two headphones at the same time, double-click any one of them, wait until one of the headphones lights out, and then it is finished.)

Special Note: The two earbuds are well paired before packaged, but if they can not paired well due to some wrong operations, pls. do as following steps to re-pair the earbuds. Power off the two earbuds, then press the button of the two earbuds at same time and do not release for about 10s, blue lights sparkled ----> red and blue lights sparkled alternatively ----> release ----> two earbuds are in the situation of paired, and they are ready for phone searching.

Note: This operation also clears the team record between the phone and the earbuds, so you need to delete the Bluetooth pairing record before the phone and then search for the connection again.

Care and maintenance:

- ① To avoid any mis-operation caused by collision put the earbud in charging case before put in your pocket
- ② Do not use an abrasive cleaner to clean the Bluetooth earbuds.
- ③ Do not expose the Bluetooth earbuds to excessive temperature.
- ④ Do not expose the earbud under the blazing sun for a long time

- ⑤ Do not let the Bluetooth earbuds be close to the fire source.
- ⑥ Do not drop, bump, scratch, twist, tap, crush, or put into the water.
- ⑦ Keep away from magnets, appliances and speakers when using Bluetooth earbuds.
- ⑧ Do not place the Bluetooth earbuds in extreme temperature (use ambient operating temperature range -10°C-55°C)
- ⑨ Do not expose the Bluetooth earbuds to moisture.
- ⑩ If you do not use the Bluetooth earbuds for a long time, please charge it fully and charge it once a week to extend the life of the Bluetooth earbuds.

Safety guidance:

- ① please use the standard 5V charger (4.9-5.5V)
- ② Do not place the charging case and the Bluetooth earbuds next to the flammable explosives.
- ③ Do not disassemble the charging case and Bluetooth earbuds, or insert other items into the product to avoid damage to the product or even cause harm to you.

Serious warning:

Do not use this product while charging. Please use the adapter specified by the manufacturer to charge the product. Do not disassemble the built-in lithium battery. Do not let the metal contact or short the electrode. Do not touch or squeeze the battery to avoid Place in a humid or hot (>60 ° C) environment.

Warranty Card

Warranty certificate, please fill in and keep it safely

Product Name _____
Sales date _____
Shop _____
After sale service _____

Packing details:

Item Name	Quantity
Bluetooth earbuds	2 pcs
Charger case	1 pcs
User manual	1 pcs
Eartips	2 pcs
Use charger line	1 pcs

TWS V5.3

无线耳机

F9

使用说明书

产品描述

耳机功能参数:

- ① 产品型号: F9
- ② 无线版本: V5.3
- ③ 支持协议: Supports HFP 1.7 HSP 1.2, A2DP 1AVRCP 1.6 SPP 1.2 and PBAP 1.0
- ④ 喇叭直径: 8mm
- ⑤ 工作距离: 10m-20m
- ⑥ 通话时间: 4 H (满电单次使用)
- ⑦ 音乐播放时间: 4 H (满电单次使用)
- ⑧ 频率范围: 2402MHz~2480MHz
- ⑨ 电池类型: 3.7V, >30mAh 锂离子聚合物电池
- ⑩ 耳机充电时间: 2H
- ⑪ 工作温度: -10°C-55°C

移动充电仓参数:

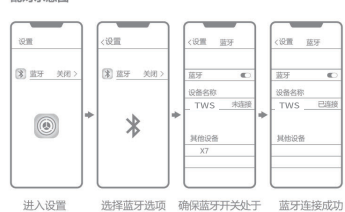
- ① 输入电流: 5V==1A
- ② 输出电流: 5V==1A
- ③ 电池类型: 3.7V, 18650锂电池
- ④ 充电仓充电时间: 2H

使用说明:

- ① 确保充电仓有电, 如果充电仓没电请给充电仓充满电; (把两只耳机拿起来再放回盖好盖子, 充电仓指示灯亮表示有电, 不亮表示没电)

- ② 把两只耳机从充电仓取出分别戴在左右耳朵上, 耳机将自动开机, 自动配对; (语音提示: 开机, 左声道, 右声道, 等待连接)
- ③ 打开手机蓝牙, 点击连接配对名 " TWS " 即可连接使用 (语音提示 " 连接成功") 。

配对示意图



温馨提示:

首次使用或长时间不用, 请务必给充电仓和耳机充电后再使用, 请保持在10米内无阻碍的有效环境使用, 否则可能出现卡顿和断连。

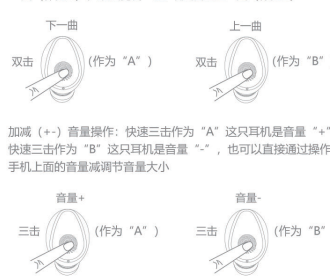
指示灯说明:

- ① **给耳机充电:** 把耳机放入充电仓, 盖好盖子即可充电。 **耳机指示灯:** 充电时亮红灯, 充满后红灯灭, 充电仓闪烁灯, 充电后后灯灭。
- ② **给充电仓充电:** 把5V/1A的USB插入充电口, 即可充电。充电期间, 充电仓显示屏中间数字表示充电电量, 当数字显示为 "100", 表示电量已充满。 **充电仓指示灯:** 充电时亮绿灯, 充电后后灯灭。
- ③ **充电仓给手机充电:** 拿USB连接充电仓放电口, 即可给手机充电。 **充电仓指示灯:** 充电时亮绿灯, 充电后后灯灭。

功能操作:

开机: 长按触摸多功能键3秒开机, 或从充电仓中取出自动开机。
关机: 长按触摸多功能键5秒 (红灯常亮) 关机, 或直接把蓝牙耳机放回充电仓, 耳机自动红灯亮自动关机。
通话接听和挂断: 手机来电, 短按耳机触摸按键一次即接听。通话结束后, 再短按耳机触摸按键即为挂断通话。
拒接来电操作: 长按触摸主耳机多功能键3秒, 拒接接听来电。
自动关机/静音功能或语音控制功能: 长按触摸主耳机或副耳机主按键约15秒到提示音 "嘟" 后松手, 手机静音功能已经启动, 短按按键结束此功能。

5.1版本在双耳模式下, 是不分主副耳的, 双击其中一只耳机是上一曲 (作为A), 双击另外一直耳机就是上一曲 (作为B)



单耳使用方法: 5.1版本可以实现无缝连接, 主从同步无需区分单双耳, 也就是只要连接上组队好的信号, 就不需在去连接单耳的信号了, 取出任意一只耳机, 都可以完成自动连接, 单耳使用状态下取出另外一只耳机, 也会立刻完成组队进入双耳模式!

注: 单耳使用时

主耳机 (R) 信号名称: TWS
副耳机 (L) 信号名称: TWS

二次以上使用操作: 和已经连接使用过的手机---打开手机蓝牙, 同时拿出充电仓内的耳机, 不需要任何操作, 即会和手机自动连接上了, 如果二次以上使用不同的手机, 需要按照使用说明书中操作步骤操作后方可使用。

特别提示: 耳机出厂前已经做到了组队。如果出现左、右耳机不能配对, 同时开机后请双击任意一只耳机, 等待几秒钟, 看到其中一只耳机灯灭, 就代表组队成功了。(如果手机已经连接了单耳信号, 请一定先删除掉信号并关闭手机蓝牙, 在按前面方法完成组队)

注: 此操作也是清除手机与耳机之间的组队记录, 故这时需要将手机之前的蓝牙配对记录删除, 然后重新连接。

护理及保养:

- ① 将蓝牙耳机放入口袋前, 请将蓝牙耳机放回充电仓, 避免碰撞所导致的误操作。
- ② 请勿使用具有磨擦性的清洁剂清理蓝牙耳机。
- ③ 请勿将蓝牙耳机暴露在温度过高的地方。
- ④ 请勿将蓝牙耳机长时间暴晒。
- ⑤ 请勿让蓝牙耳机靠近火源。
- ⑥ 请勿将蓝牙耳机摔落、撞击、刮擦、扭曲、敲打、碾压、投入水中等。
- ⑦ 使用蓝牙耳机时请将远离磁铁、电器和扬声器附近。
- ⑧ 请勿将蓝牙耳机放置于极端温度中 (使用环境温度工作范围 -10°C-55°C)
- ⑨ 请勿将蓝牙耳机暴露于潮湿的环境中
- ⑩ 若长时间不使用蓝牙耳机, 请充满电并隔一个星期冲一次电, 延长蓝牙耳机使用寿命。

安全指导:

- ① 充电仓请使用标准5V充电器 (4.9-5.5V)
- ② 充电仓与蓝牙耳机充电时请勿将放在易燃易爆物品旁边。
- ③ 请勿拆卸充电仓与蓝牙耳机, 或将其它物品插入产品内, 以避免产品损坏甚至给你带来伤害。

严重警告:

请勿在充电时使用本产品, 请使用厂家指定的适配器给本品充电, 内置锂电池切勿拆开放置火中, 不可让金属品接触或短路电极, 不可撞击或挤压电池, 避免放置于潮湿腐蚀性或过热 (>60°C) 环境中。

商品保修卡 (保修细则)

- 一、由购买日起至三个月保修期内, 机件如有发生故障时, 经本公司技术人员证实确属正常使用下发生, 将提供免费维修及零配件更换服务。
- 二、在下列情况, 公司将拒绝提供维修服务:
 - a. 产品曾被错误操作, 疏忽使用或因天灾人祸等意外事件引到机件损坏,
 - b. 产品非本公司技术人员修理及改造。
 - c. 产品机身号曾被篡改、涂改或删除。
 - d. 产品不按原厂提供安装指示。
- 三、此保修卡提供之免费服务并不包括产品附件, 及其它装饰等项目。
- 四、本公司将不负责任于意外损坏而招致直接或间接损失。
- 五、本保修卡内容若有修改, 恕不另行通知。

保修卡

保修凭证, 请认真填写妥善保管

产品型号 _____
售出日期 _____
购买商店 _____
售后服务 _____

包装清单:

名称	数量
蓝牙耳机	2 pcs
充电收纳盒	1 pcs
说明书	1 pcs
耳帽	2 pcs
充电线	1 条

FCC Warning:

This equipment has been tested and found to comply with the limits for a Class B digital device, pursuant to part 15 of the FCC Rules. These limits are designed to provide reasonable protection against harmful interference in a residential installation. This equipment generates, uses and can radiate radio frequency energy and, if not installed and used in accordance with the instructions, may cause harmful interference to radio communications. However, there is no guarantee that interference will not occur in a particular installation. If this equipment does cause harmful interference to radio or television reception, which can be determined by turning the equipment off and on, the user is encouraged to try to correct the interference by one or more of the following measures:

- Reorient or relocate the receiving antenna.
- Increase the separation between the equipment and receiver.
- Connect the equipment into an outlet on a circuit different from that to which the receiver is connected.
- Consult the dealer or an experienced radio/TV technician for help.

Caution: Any changes or modifications to this device not explicitly approved by manufacturer could void your authority to operate this equipment.

This device complies with part 15 of the FCC Rules. Operation is subject to the following two conditions:

(1) This device may not cause harmful interference, and (2) this device must accept any interference received, including interference that may cause undesired operation.

This equipment complies with FCC radiation exposure limits set forth for an uncontrolled environment. This equipment should be installed and operated with minimum distance 0cm between the radiator and your body.