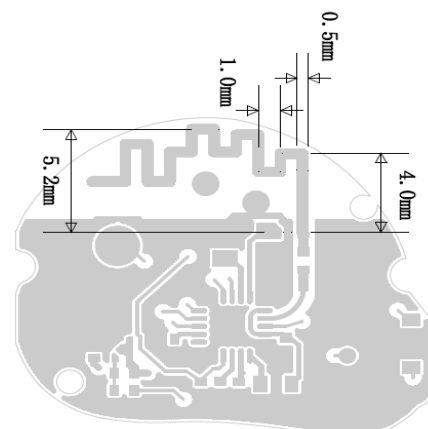


Y36-Antenna Specification

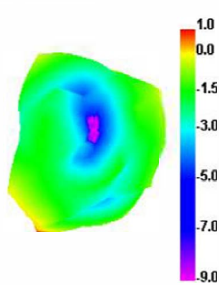
Antenna type	Bipolar Antennas	
Working Frequency	2.4 ~ 2.5	GHz
Central Frequency	2450	MHz
Gain	1.96	DBi
Gain max	1.96	DBi
Impedance	50	Ohm
Manufacture	Hua Zicheng Technology Co., LTD	
Address	Hua Zicheng Technology Co., LTD., 5th Floor, Building B, No.6, Dongcai Industrial Park, Gushu, Shenzhen	

model number: BZ-08

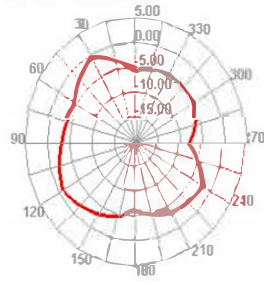
Passive Test For 2.4G												
Freq (MHz)	Effi (%)	Effi (dB)	Gain (dBi)	Gain (dBd)	UHIS (%)	DHIS (%)	Max (dB)	Min (dB)	irectivity (dBi)	Beamwidth (3dB)	AttH (dB)	AttV (dB)
2400	36.54	-3.61	1.03	-1.12	20.581	22.962	1.03	-15.9	4.64	15	48.93	49.09
2425	38.48	-2.97	1.96	-0.19	23.926	26.555	1.96	-16.48	4.93	15	49.09	49.22
2450	36.53	-4.37	0.87	-1.28	17.136	19.397	0.87	-19.74	5.24	15	49.25	49.27
2475	35.97	-4.44	0.52	-1.63	17.205	18.763	0.52	-23.22	4.96	75	49.98	49.91
2500	36.94	-4.32	0.32	-1.83	17.676	19.267	0.32	-18.36	4.64	75	49.71	49.62



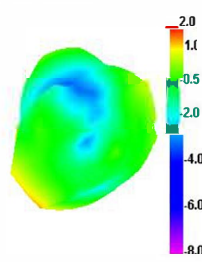
2400.000MHz



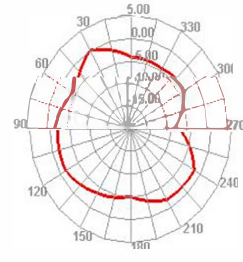
2400.000MHz H



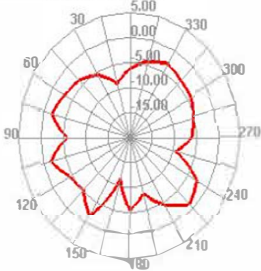
2425.000MHz



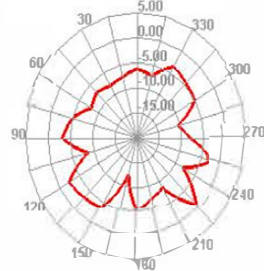
2425.000MHz H



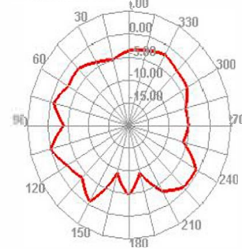
2400.000MHz E1



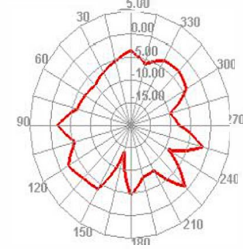
2400.000MHz E2



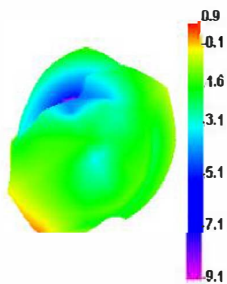
2425.000MHz E1



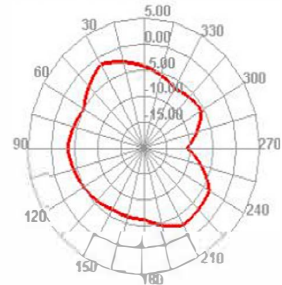
2425.000MHz E2



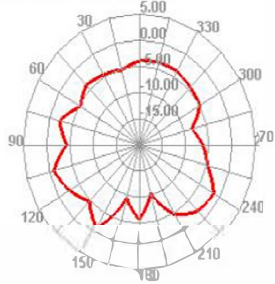
2450.000MHz



2450.000MHz H



2450.000MHz E1



2450.000MHz E2

