

WIRELESS CHARGER

MANUAL

All technical information is subject to the actual product performance

Product Introduction

The multi-functional wireless charger is an exquisite charging base, which is widely compatible with Qi wireless charging protocol standard. Three dependent coils can be powered by only one line to carry out wireless fast charging for three devices at the same time. When charging your mobile phone, watch and TWS Bluetooth headphone box, as long as you put it on the corresponding charging area, you can automatically charge wirelessly, simplify it and give you a clean desktop. Fashionable appearance design, ABS material, foldable and rotated design, suitable for home, office or travel.

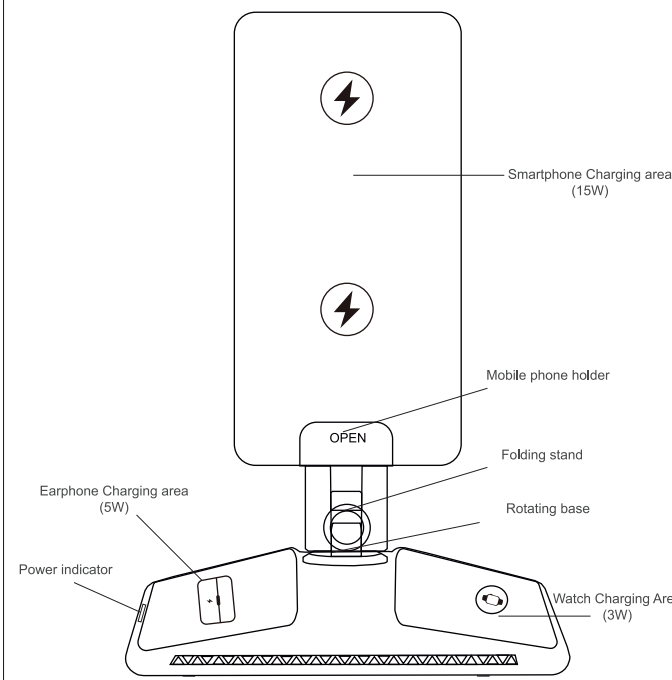
Product Specification

Product Name: Wireless Charger	Product Model: F2
Output Power: 15W / 5w / 3w	Input Current: 9V / 3A
Output Interface: Type-C	Turning Distance: ≤ 8mm
Product Size: 165*73*50mm	

Accessories List

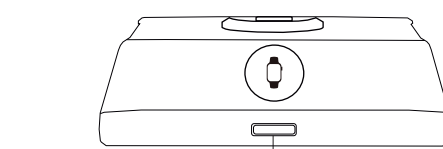
Wireless charger * 1, Type-C cable * 1, Product manual * 1

Product Description



Power-on	White light
Charging	Blue light
Standing by	White light
FOO	Blue light flashing
Fully Charged	White light
Remove equipment	Turn to white light within 3 seconds

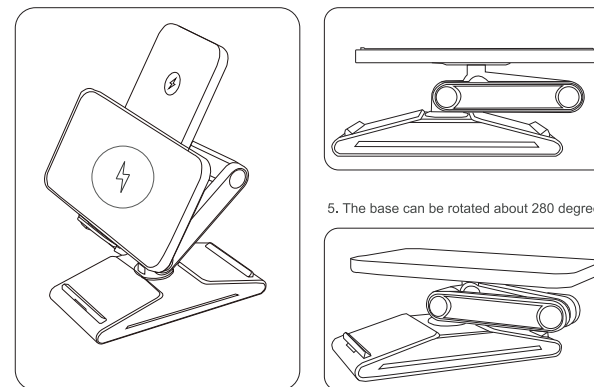
Use Steps



1. Please connect the product to the 9V / 3A charging adapter through the Type-C interface and turn on the power.

2. Place your mobile phone, watch and earphone in the designated charging area to start charging.

3. Open the stand and you can use it while charging. 4. Fast folding and easy carrying.



5. The base can be rotated about 280 degrees.

Applicable Devices

1. Smartphone:

Qi compliant models

2. Smart Watch:

Apple Watch 3/4/5/6/7/8 Apple Watch, Apple Watch Ultra, Apple Watch SE

3. Smart Earphone:

Qi compliant models

Note: Please check whether your mobile phone supports wireless charging, so the above devices must comply with Qi standard.

Safety precautions (please read it carefully and strictly abide by it)

- Keep the charger away from water or other liquids.
- In order to ensure the maximum performance of the charger, please make sure to use the 9V / 3A charging adapter for charging.
- Do not disassemble parts without permission, which may cause product failure or damage.
- When using USB wiring, please pay attention to the wire position to avoid tripping.
- Forcibly or violently pulling the USB power cable may cause wire damage. Please press the plug to unplug.

Cleaning and maintenance

- Clean the cooling holes regularly to avoid blockage.
- Clean the surface dirt with a soft cloth dipped with diluted neutral detergent, and then wipe it dry with a dry cloth.
- Do not expose the product to open fire or sunlight to avoid body deformation.
- The ambient temperature shall be kept between 0-45 ° C.

FCC WARNING

This device complies with part 15 of the FCC Rules. Operation is subject to the following two conditions: (1) This device may not cause harmful interference, and (2) this device must accept any interference received, including interference that may cause undesired operation.

Note: This equipment has been tested and found to comply with the limits for a Class B digital device, pursuant to part 15 of the FCC Rules. These limits are designed to provide reasonable protection against harmful interference in a residential installation. This equipment generates, uses and can radiate radio frequency energy and, if not installed and used in accordance with the instructions, may cause harmful interference to radio communications. However, there is no guarantee that interference will not occur in a particular installation. If this equipment does cause harmful interference to radio or television reception, which can be determined by turning the equipment off and on, the user is encouraged to try to correct the interference by one or more of the following measures:

- Reorient or relocate the receiving antenna.
- Increase the separation between the equipment and receiver.
- Connect the equipment into an outlet on a circuit different from that to which the receiver is connected.
- Consult the dealer or an experienced radio/TV technician for help.

Note: The Grantee is not responsible for any changes or modifications not expressly approved by the party responsible for compliance. Such modifications could void the user's authority to operate the equipment.

The device has been evaluated to meet general RF exposure requirement. This equipment complies with FCC's RF radiation exposure limits set forth for an uncontrolled environment. This device and its antenna(s) must not be co-located or in conjunction with any other antenna or transmitter.

Warranty Card

Please keep this card properly. The company will take this card as the warranty certificate. Thank you for purchasing this product. The warranty period of this product is 12 months from the date of purchase. Please keep it properly and fill in detailed relevant information for warranty use.

Product model: _____ Date of purchase: _____

Dealer name: _____

User name: _____ Contact number: _____

Address: _____

Explain the reason: Return goods Exchange goods Guarantee

Warranty conditions

When warranty service is required, please show this card and fill in the relevant contents in detail. The company provides users with a 12-month warranty period from the date of purchase.

Warranty scope

The quality problem under normal use is not the damage caused by external damage, the company assumes the responsibility for repair. In principle, the users of the product during the warranty period do not need to pay fees, but due to human damage, the cost of testing or spare parts shall be charged as appropriate. Products beyond the warranty period will be charged.

Warranty is not available under the following circumstances

Man-made damage: for example, due to damage caused improper use and incorrect use, abnormal wear and tear of appearance, falling damage, circuit destruction, extrusion deformation, entry of foreign matters, moisture, alteration or tearing of sealing labels on products, and any other visible man-made damage, and other conditions, such as the user's own reasons (unauthorized disassembly and modification, unafraid use, improper operation, water ingress, etc.) Damage caused by force majeure, such as earthquake, flood, fire, typhoon or war.