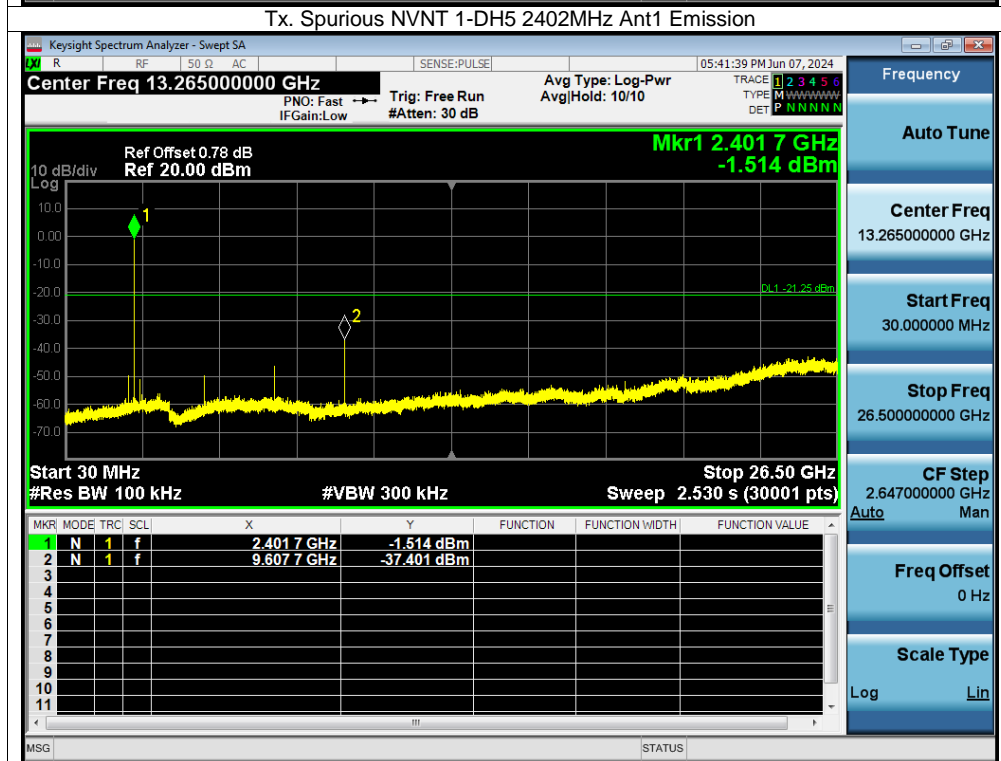
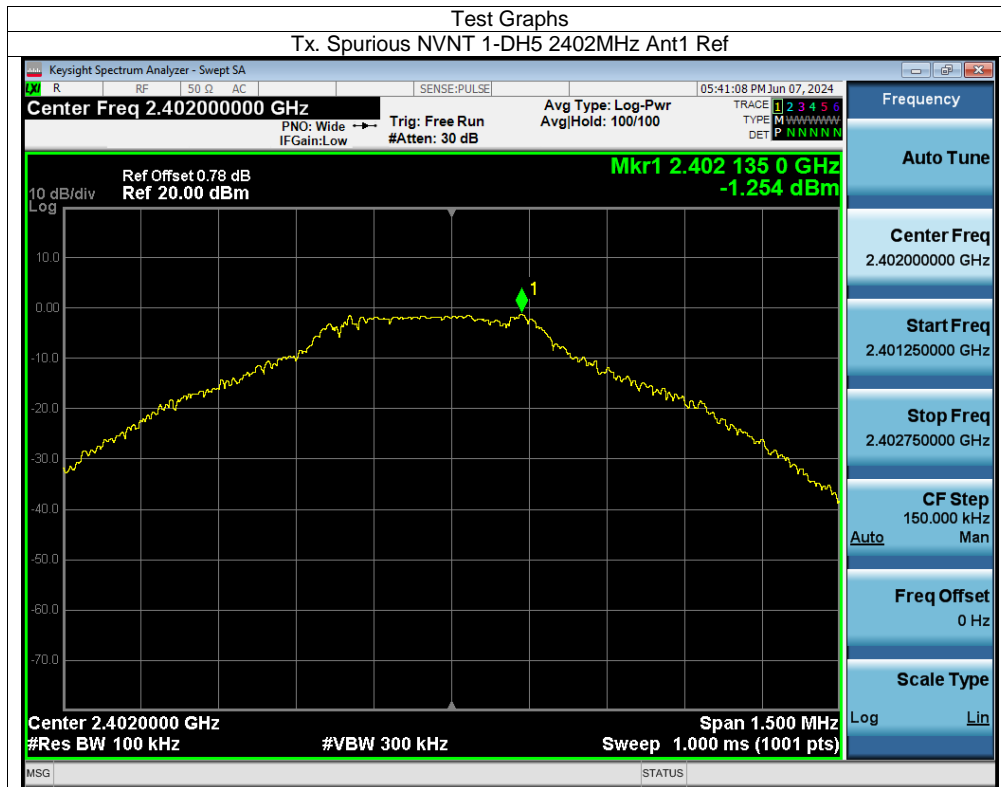
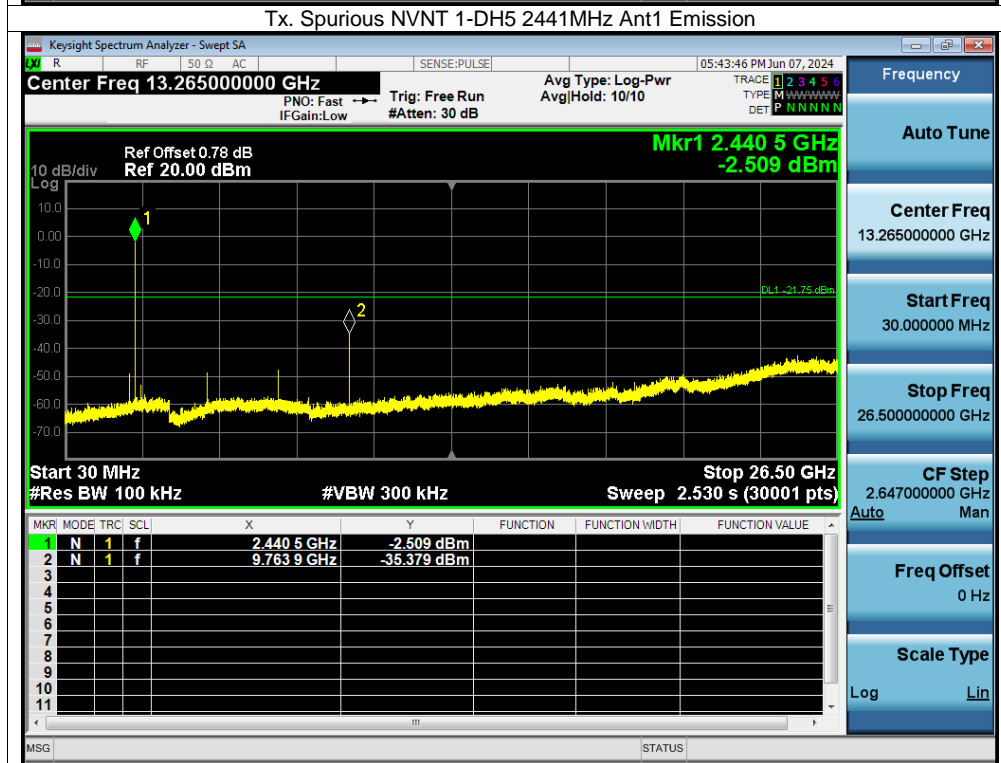
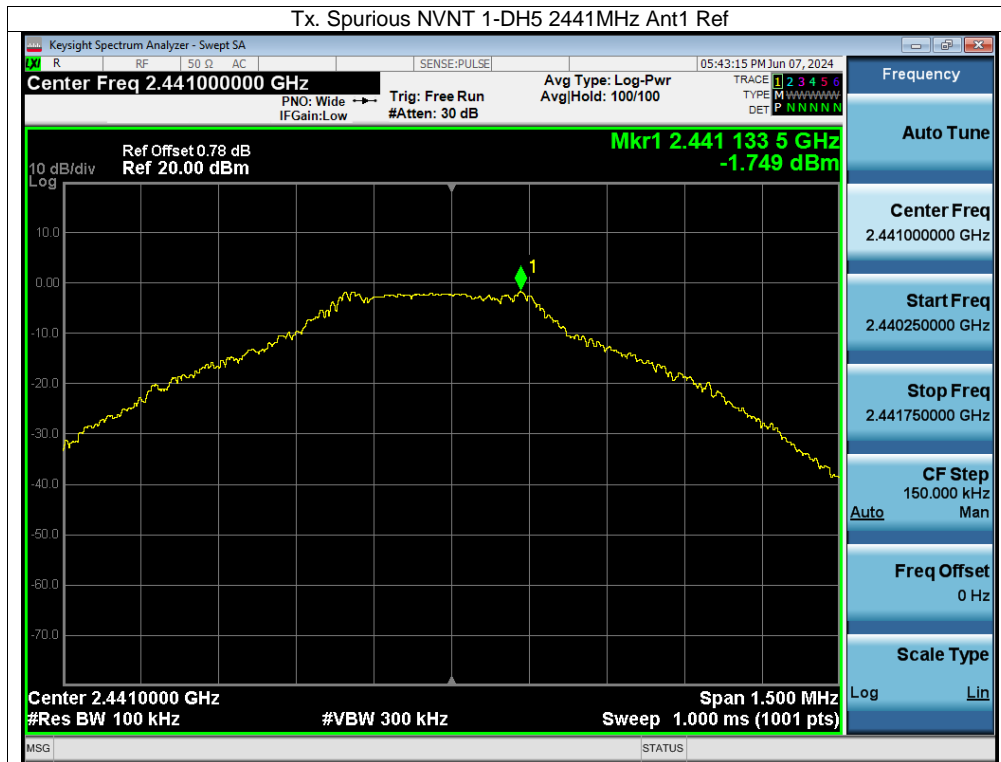
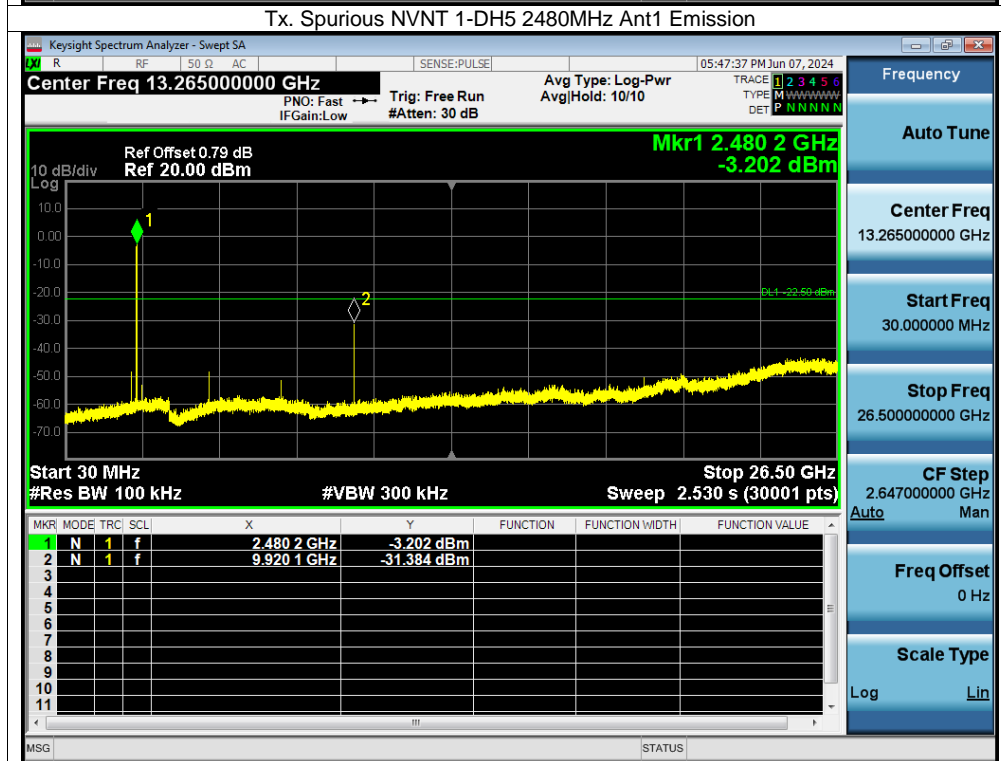
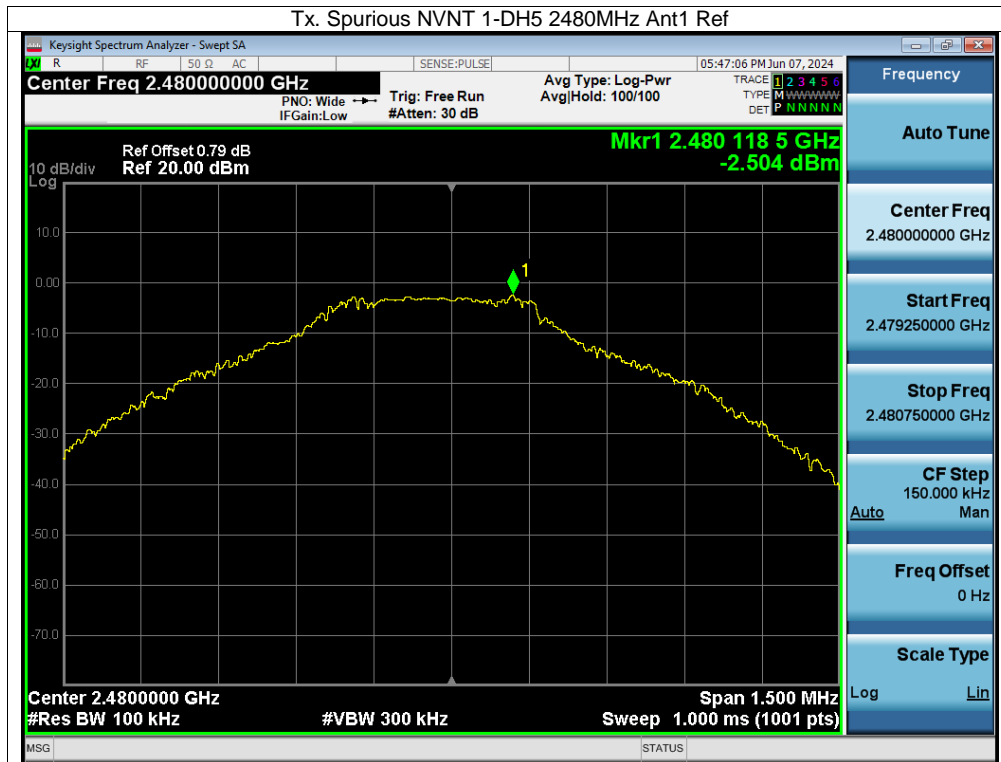


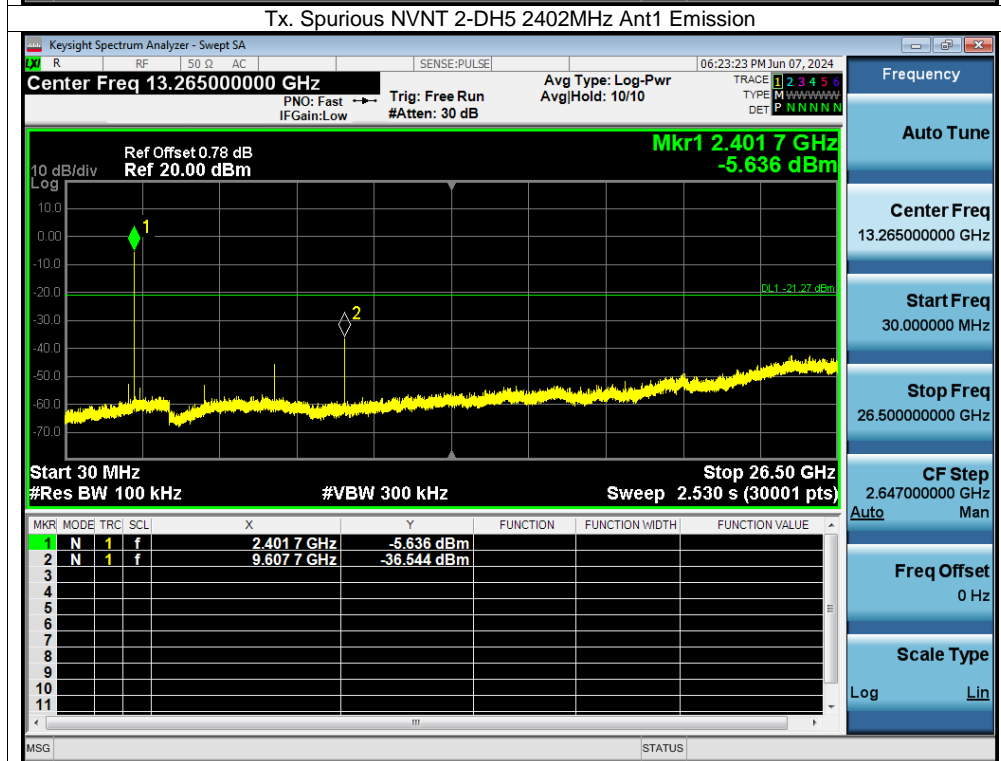
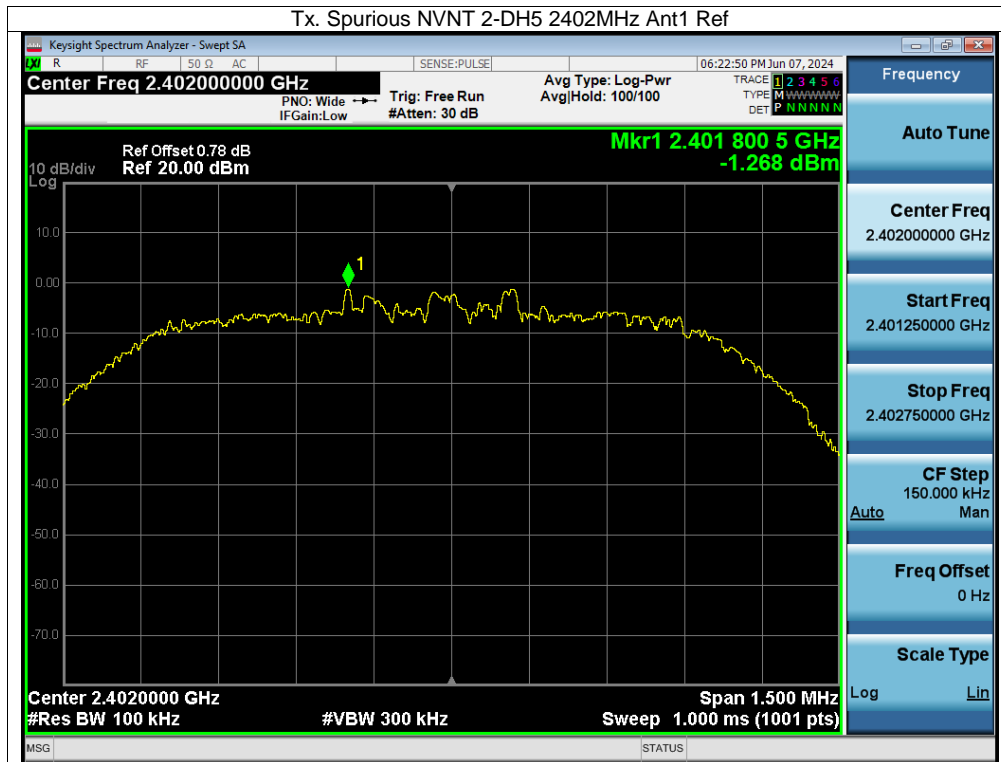
Conducted RF Spurious Emission

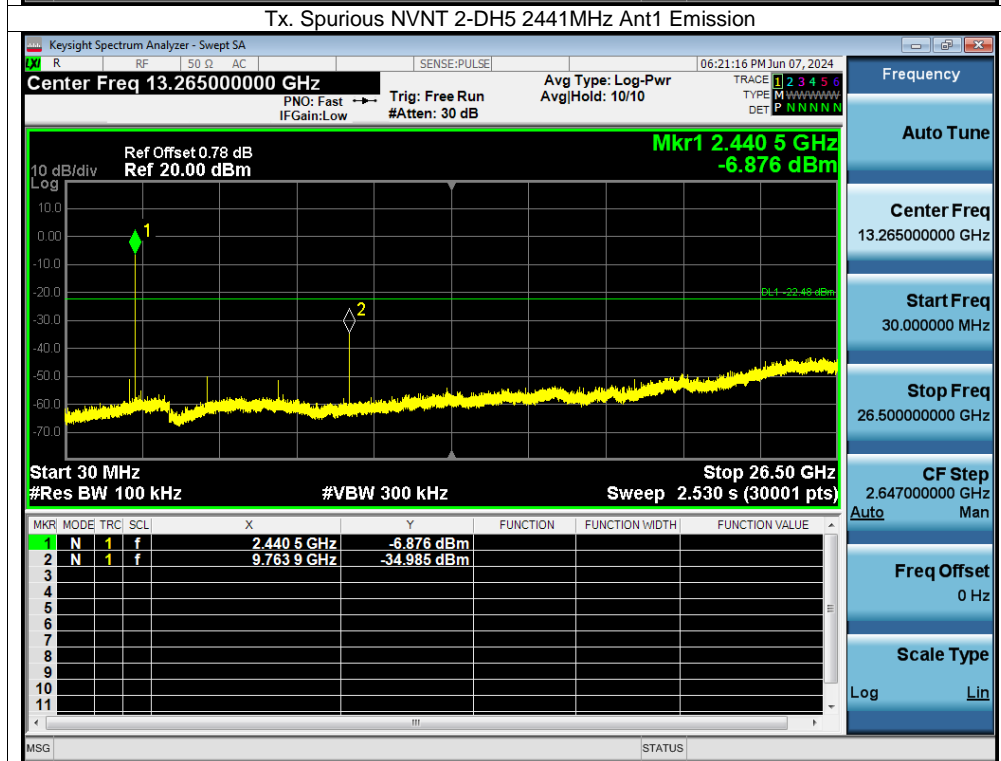
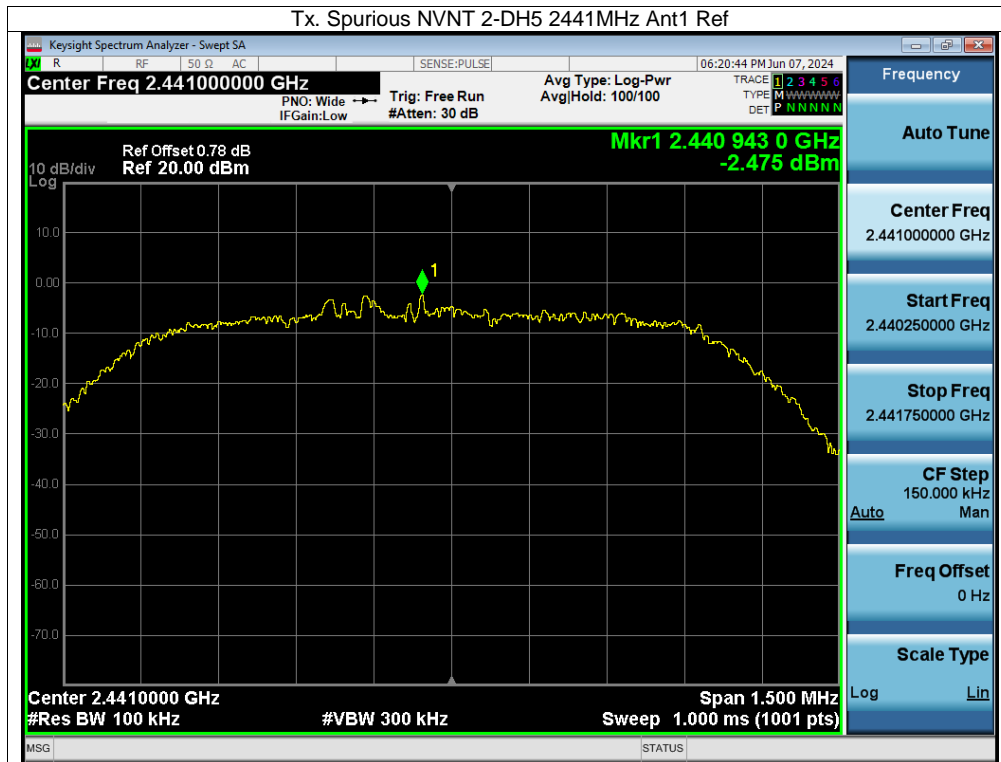
Condition	Mode	Frequency (MHz)	Antenna	Max Value (dBc)	Limit (dBc)	Verdict
NVNT	1-DH5	2402	Ant1	-36.15	-20	Pass
NVNT	1-DH5	2441	Ant1	-33.63	-20	Pass
NVNT	1-DH5	2480	Ant1	-28.88	-20	Pass
NVNT	2-DH5	2402	Ant1	-35.27	-20	Pass
NVNT	2-DH5	2441	Ant1	-32.52	-20	Pass
NVNT	2-DH5	2480	Ant1	-28.14	-20	Pass

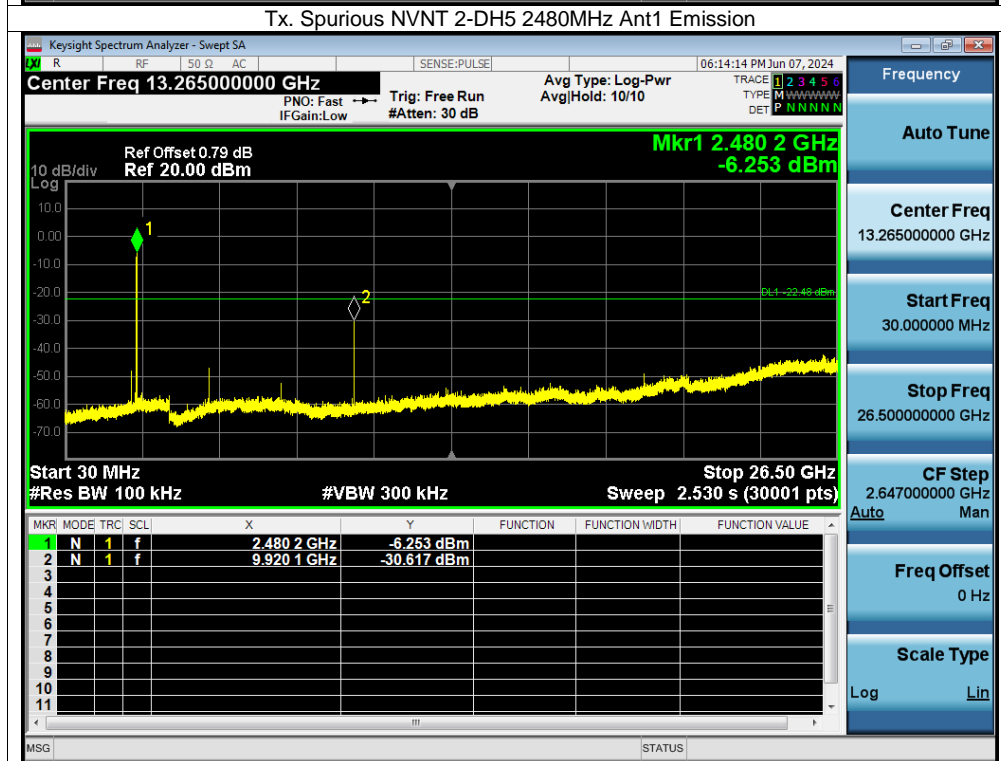
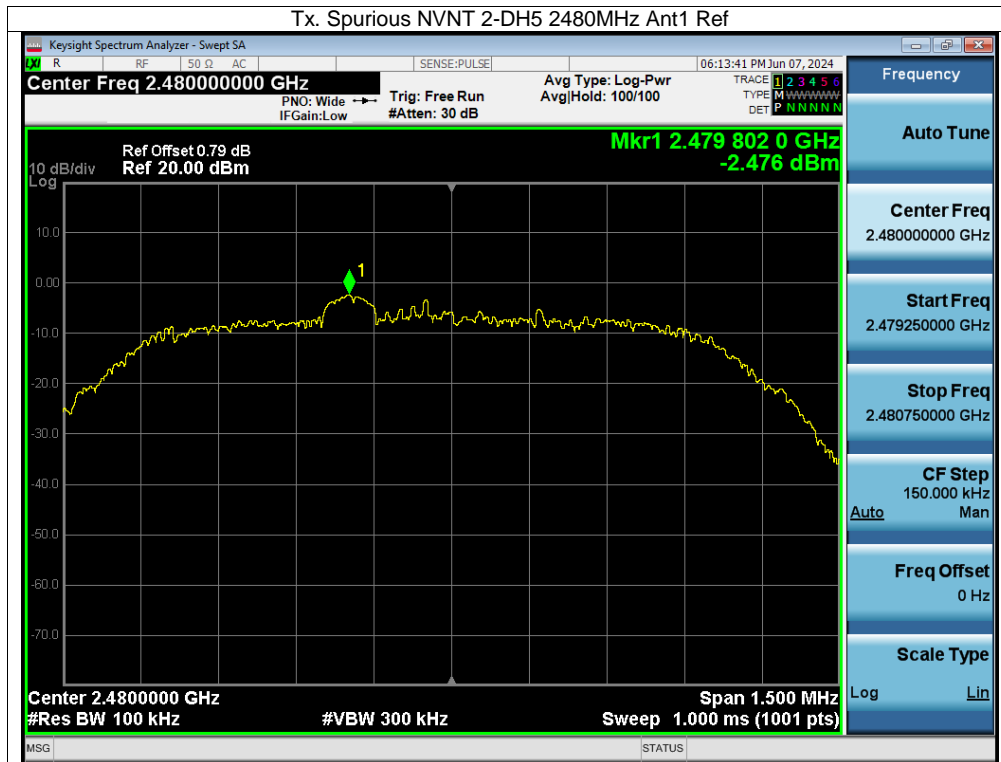










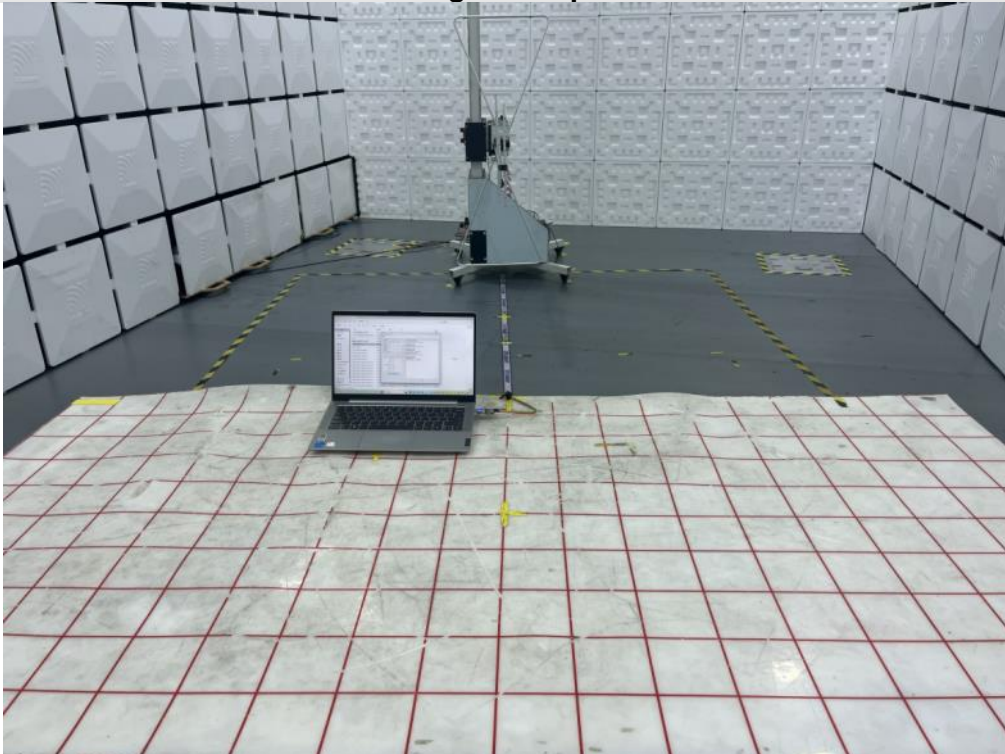


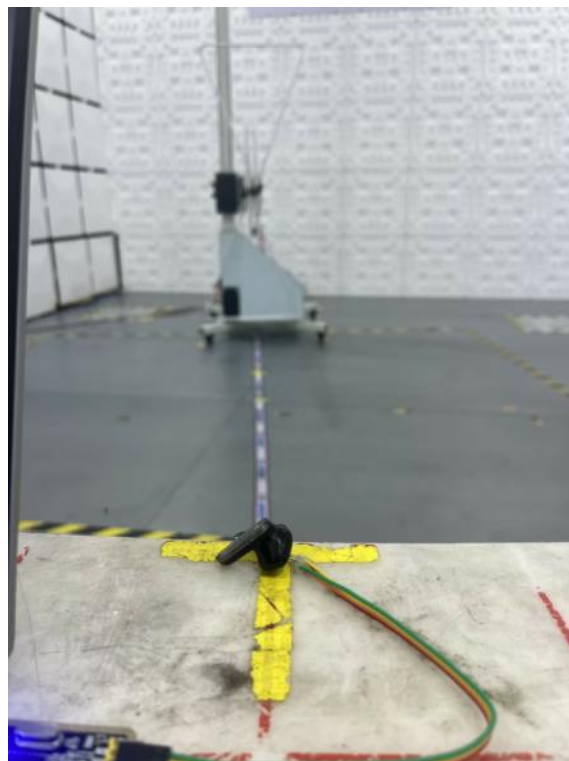
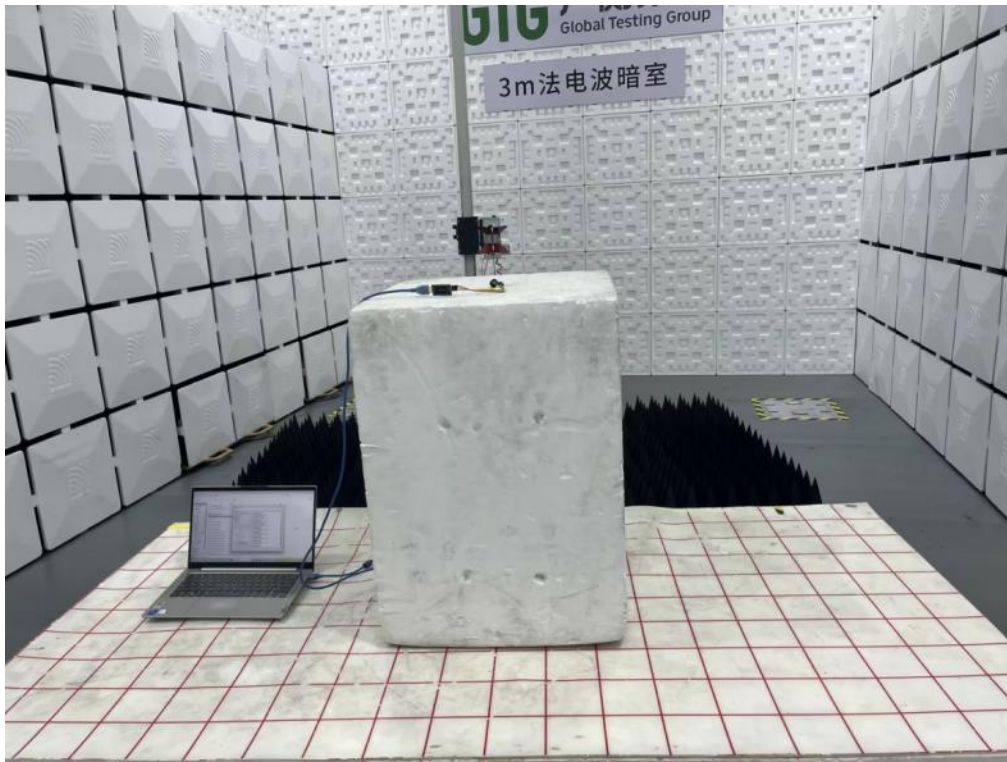
APPENDIX: PHOTOGRAPHS OF TEST CONFIGURATION

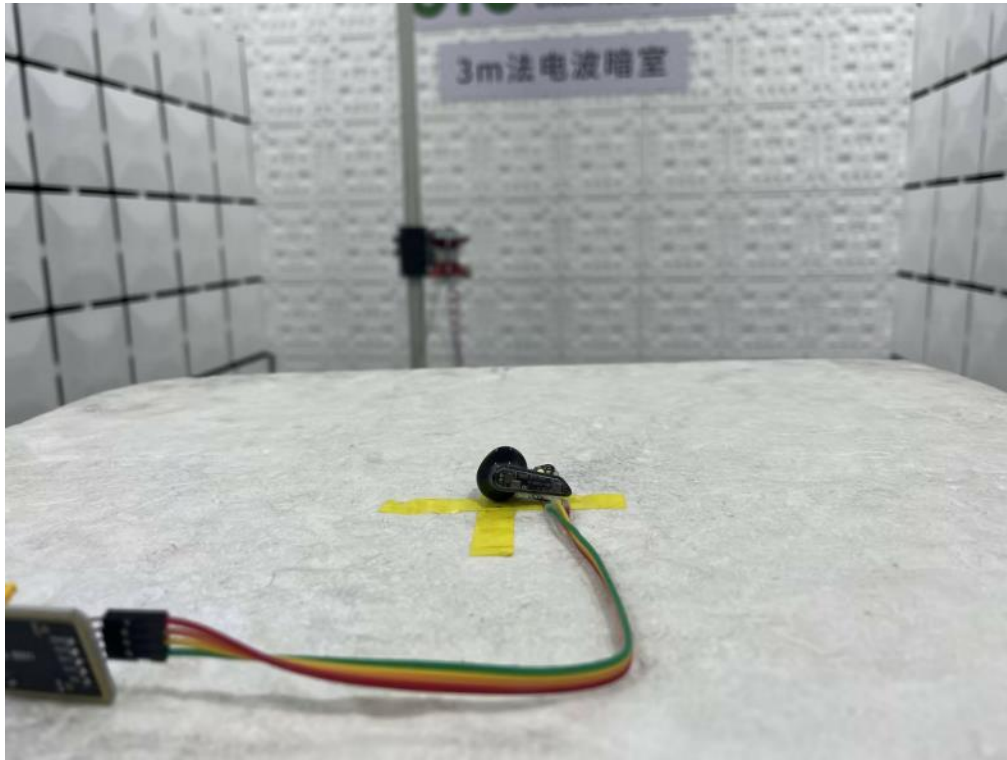
AC Power Line Conducted Emission



Radiated Band edge and Spurious Emission

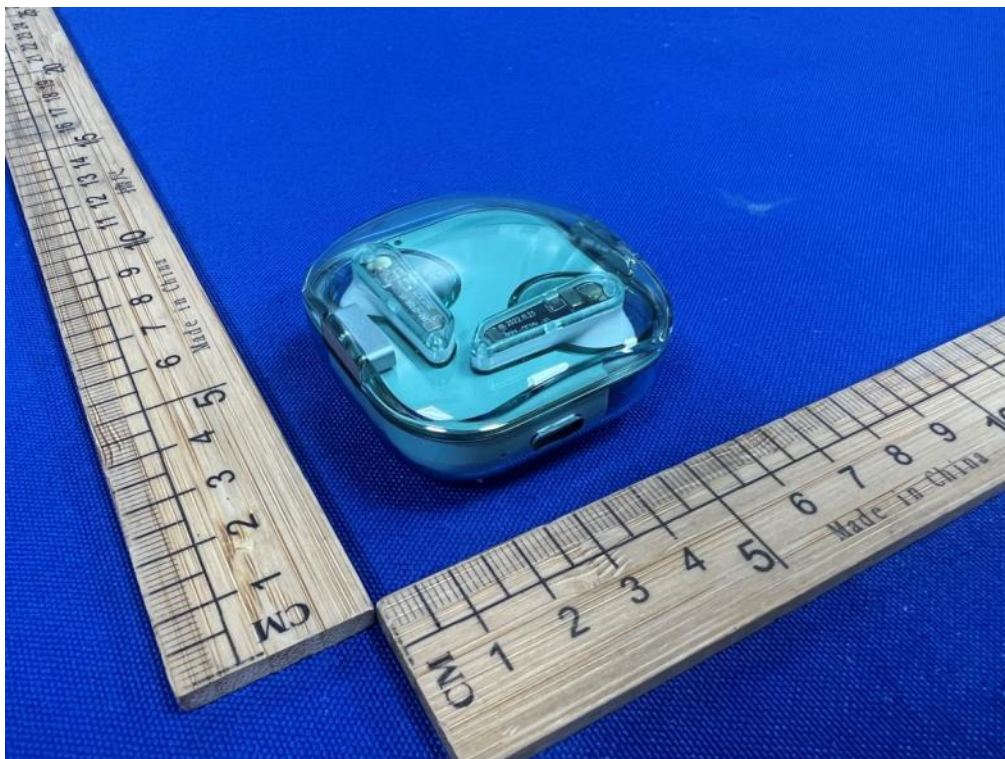




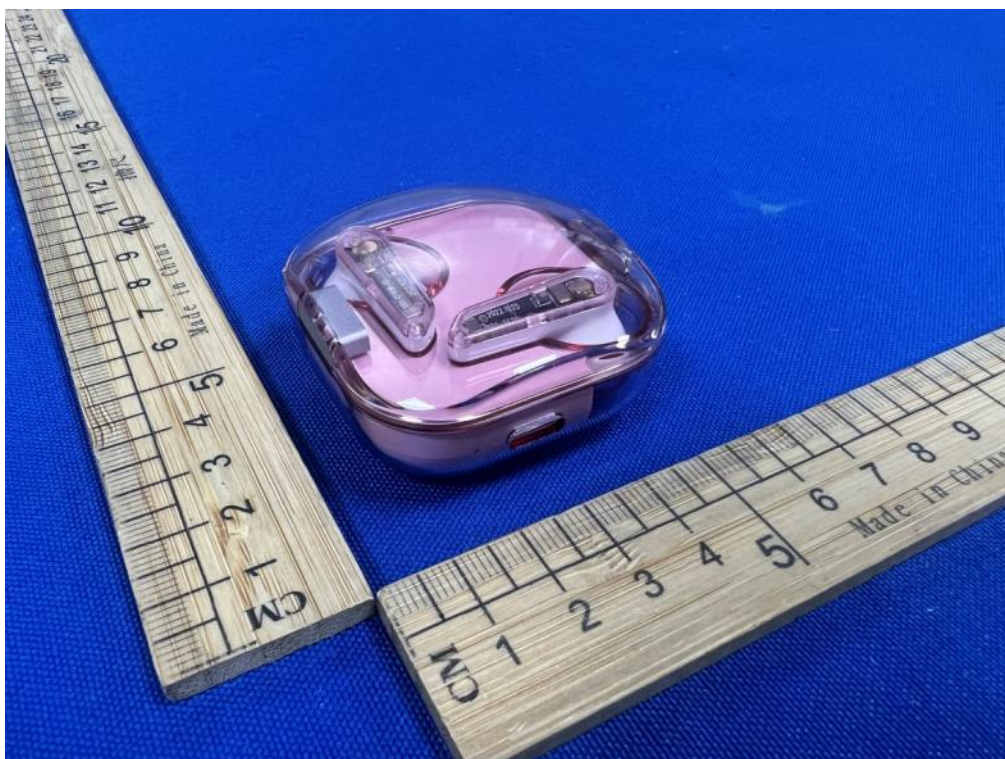


APPENDIX: PHOTOGRAPHS OF THE EUT





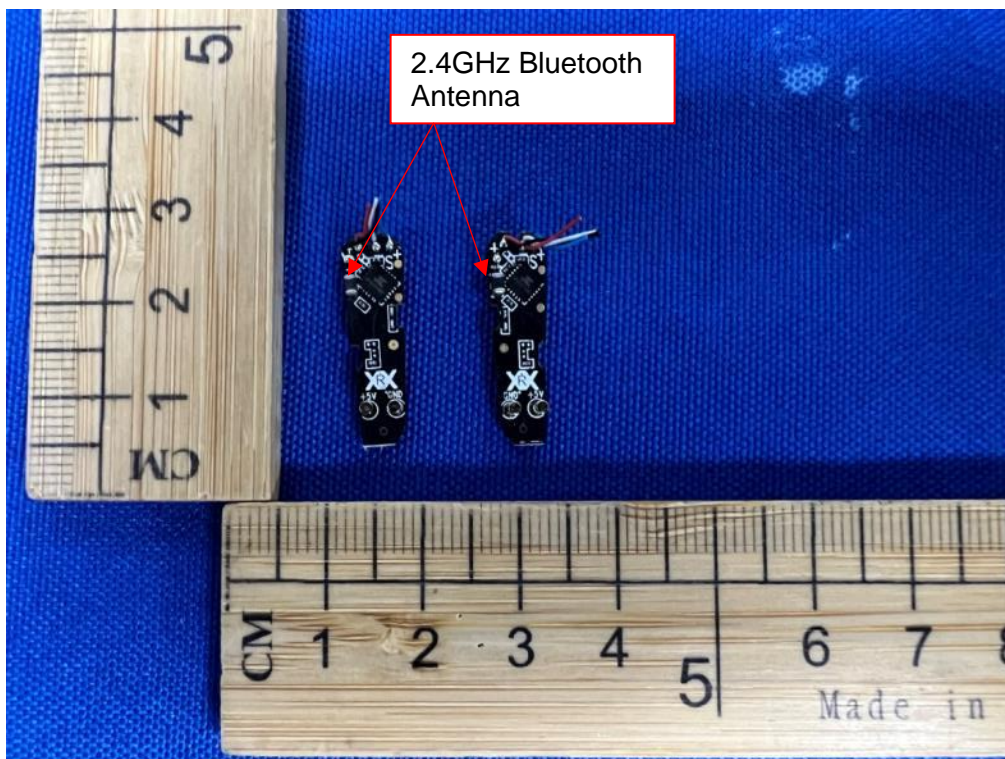


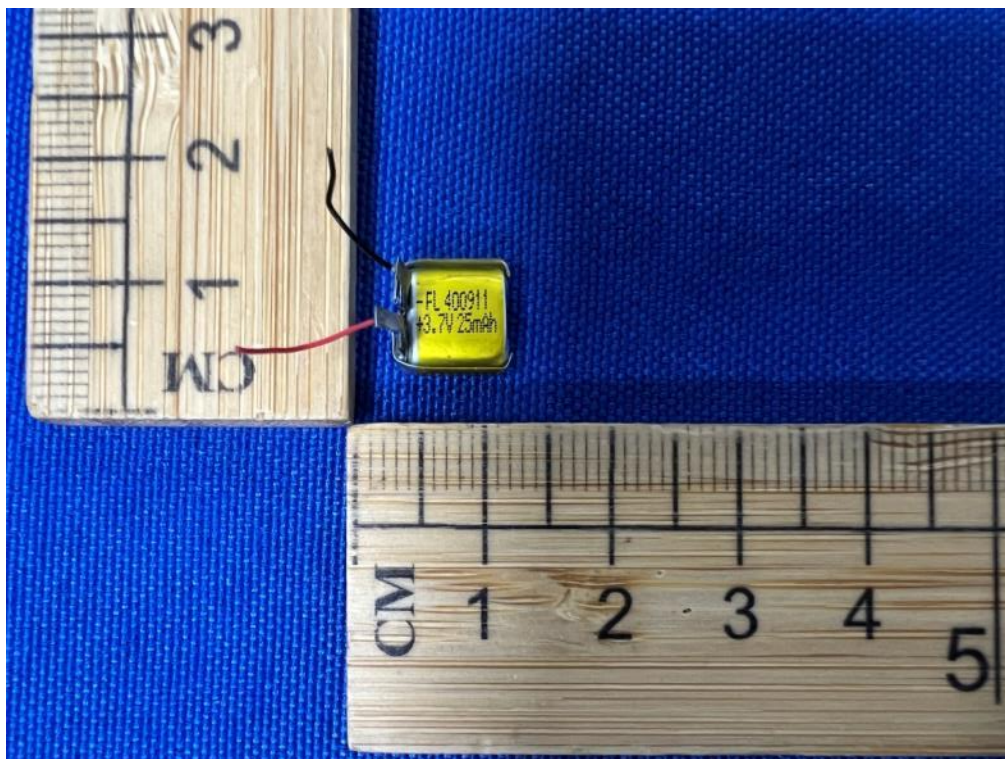
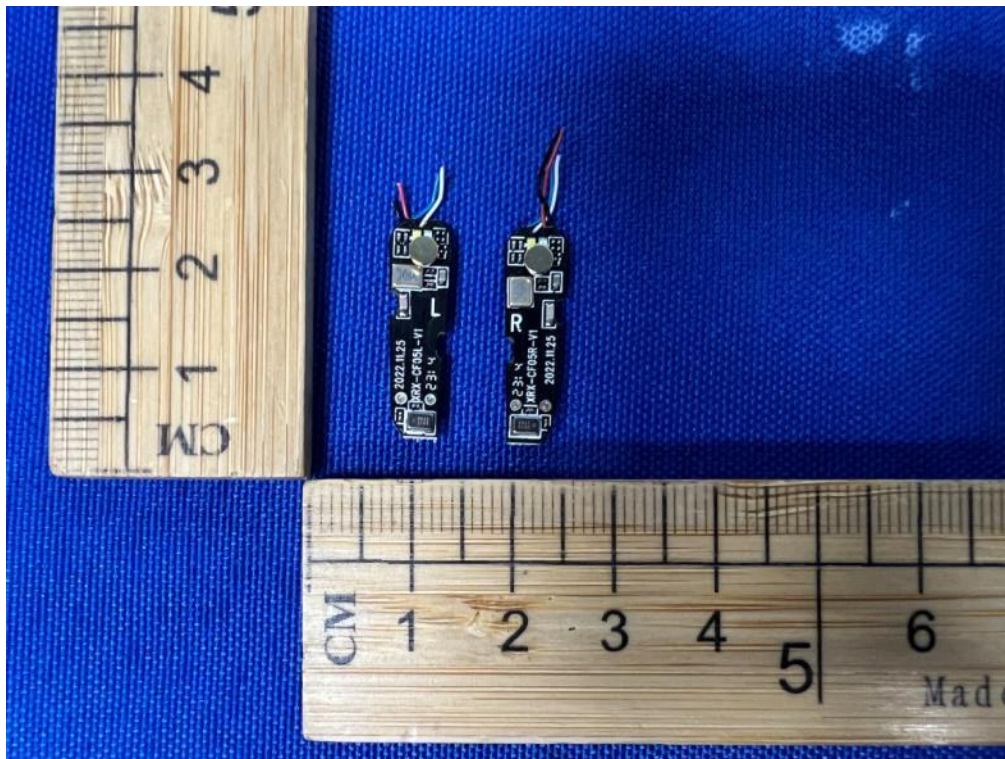




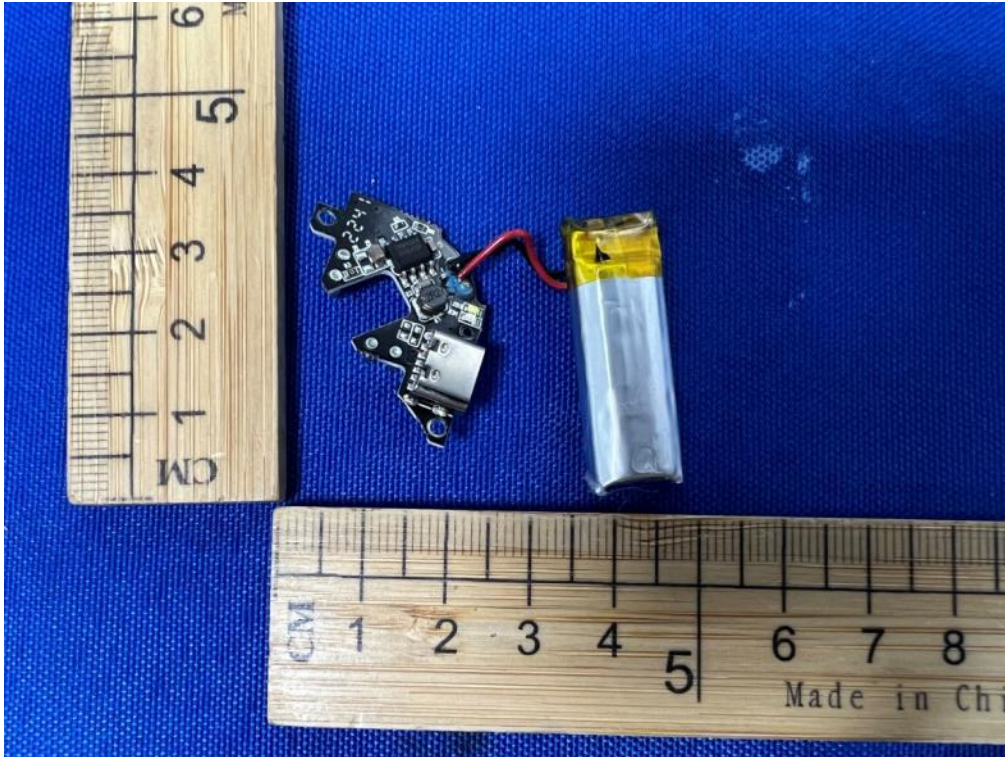












END OF REPORT