

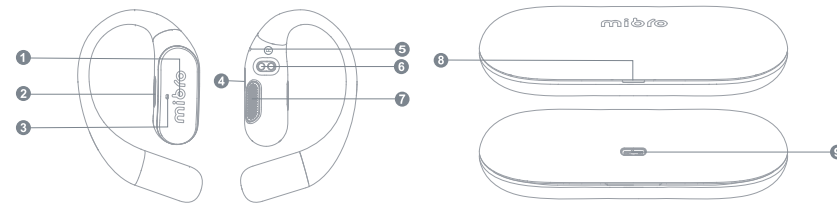
mibro

Mibro 开放式耳机 Pro
用户手册

感谢您购买本产品,使用前请仔细阅读并严格遵循使用说明和注意事项并妥善保管,以备查阅。

温馨提示:当您收到本产品后,请在首次使用前先充电。

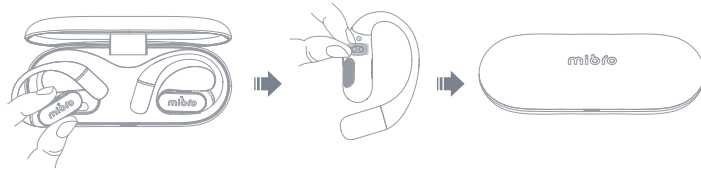
产品图解



- ❶ 多功能按键
- ❷ 调音孔
- ❸ 降噪麦克风&耳机状态指示灯
- ❹ 调音孔
- ❺ 通话麦克风
- ❻ 耳机充电接触针
- ❼ 出音孔
- ❽ 充电仓状态指示灯
- ❾ USB-C充电口

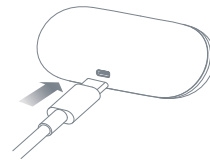
首次使用

- 首次使用请留意撕掉耳机充电针上的保护膜, 然后把耳机放入充电盒并关盖, 再次打开盒子即可使用



产品充电

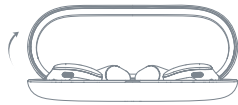
- 耳机放入充电仓, 自动充电
- 充电仓连接USB-C充电线后, 充电仓指示灯闪烁为正常充电



开关/关机

● 打开盖子, 耳机充电灯闪烁即为开机

● 关闭盖子, 耳机即为关机状态



佩戴方式

● 区分左右耳

● 顺着耳朵轮廓向后旋转

● 调整耳机至贴合且舒服状态



下载APP



"Mibro Fit" APP

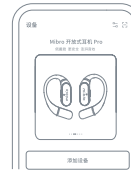
- 请扫描二维码下载"MibroFit"App。
- 请使用"MibroFit"App手动扫码配对。

App连接功能

- 耳机电量实时显示；
- 查找耳机；
- EQ自定义；
- 触摸功能自定义；
- 耳机软件OTA；
- 耳机操作说明。

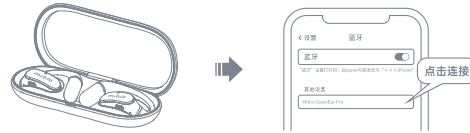
首次连接APP

- 打开盒盖,耳机自动开机
- 在MibroFit中点击“添加设备”选择“开放式耳机”进行设备绑定



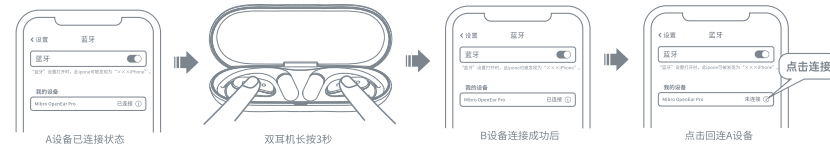
首次连接手机蓝牙

- 打开盒盖,耳机自动开机
- 打开您的手机系统蓝牙,搜索到蓝牙名称“Mibro OpenEar Pro”并点击进行配对



双设备连接

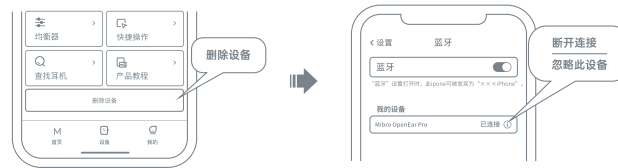
- 耳机入盒开盖,同时长按两只耳机的触摸键3秒,此时耳机会和当前设备断开蓝牙连接,可与第二台设备进行配对。
- 耳机与第二台设备配对成功后,需要在第一台设备上手动回连一次耳机,即可在两台设备之间切换声音了。



解绑断连

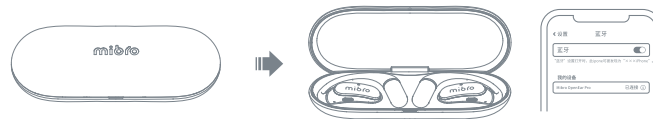
- 在MibroFit删除此设备

- 手机蓝牙忽略此设备



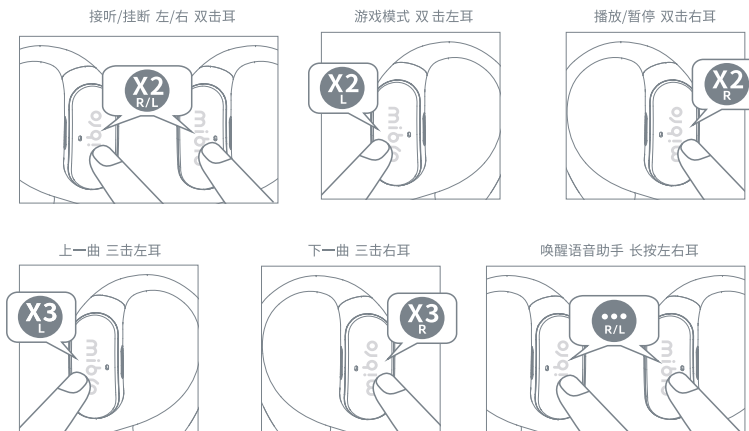
自动回连

- 开盖自动回连



按键操作

- 以下图示为耳机默认按键功能, 您还可以通过MibroFitApp自定义按键功能操作。



产品参数

耳机基本参数:

蓝牙型号	XPEJ011	电池容量	60mAh(每只)	待机时间	约60小时	耳机重量	约7.2g(每只耳机)
蓝牙版本	V5.4	充电时间	约1小时	输入参数	5V=100mA	防水级别	IPX4
传输距离	≤10m/33ft	音乐时间	约6小时 50%音量	电池类型	聚合物锂电池		

充电盒基本参数:

电池容量	500mAh	充电时间	约2小时
输入参数	5V=500mA	电池类型	聚合物锂电池
输出参数	5V=200mA	盒子重量	约46g

执行标准 GB/T9254.1-2021 GB4943.1-2022 CMIIT ID:XXXXXXXXXX

包装清单

充电盒 x1个、耳机 x2个、充电线 x1条、说明书 x1本。



安全信息

使用和操作设备前, 请阅读并遵守以下注意事项, 确保设备性能最优化, 避免出现危险或非法情况。

- 产品信息和认证标示位于充电盒内。
- 为了防止可能出现的听力损伤, 请勿长时间用高音量使用本产品。
- 请遵守所在地区或国家的相关规定, 驾车时请勿使用本产品。
- 请勿将产品拆解、撞击、挤压、投入火中及高温烤箱中, 避免机械方式碾压或切割电池, 可能会导致爆炸。
- 产品内含不可拆卸的锂电池, 请勿自行更换电池, 以免损坏电池或设备。电池只能由授权服务中心更换且必须更换相同型号的电池; 更换不正确型号的电池, 会破坏防护措施(如起火、爆炸、电池漏液等)。若电池出现严重鼓胀, 请勿继续使用。
- 请勿将旧电池扔进生活垃圾中, 应按当地法律法规要求处理本设备及废旧电池。
- 请勿在雷暴天气下使用本产品, 雷暴可导致设备工作异常, 并增加触电的危险。
- 请勿将电池置于极高温或极低气压环境下, 可能会导致爆炸或易燃液体或气体泄漏。
- 本产品并非玩具, 产品本体及配件内含小部件可能会造成孩童窒息或导致其他伤害, 请将产品放置在孩童接触不到的地方。
- 如接触部位皮肤出现红肿等症状时, 请立即停止使用并咨询医生。
- Bluetooth®文字商标和徽标为BluetoothSIG, Inc.的注册商标, mibro品牌已获得对此类商标的使用权。



产品中有害物质的名称及含量

部件名称	有害物质					
	铅 (Pb)	汞 (Hg)	镉 (Cd)	六价铬 (Cr(VI))	多溴联苯 (PBB)	多溴二苯醚 (PBDE)
耳机主体	○	○	○	○	○	○
电 池	×	○	○	○	○	○
充 电 盒	○	○	○	○	○	○
充 电 线	×	○	○	○	○	○

本表格依据SJ/T 11364-2014的规定编制。

○ 表示该有害物质在该部件所有均质材料中的含量均在GB/T 26572规定的限量要求以下。

× 表示该有害物质至少在该部件的某一均质材料中的含量超出GB/T 26572规定的限量要求。

本产品符合RoHS环保要求：目前国际上尚无成熟技术可替代或减少电路组件的部分电子组件，钢及铜合金的铅含量。



本标识内的数字表示产品(除电池外)在正常使用状态下,环保使用期限为10年。

部件上的环保使用年限标识优先于产品上任何与之相冲突或不同的环保使用期限标识。本产品所有环保使用期限是指在产品说明书规定的使用条件下使用本产品不发生有毒有害物质泄露的安全年限。

性能故障及售后条例

名称	性能故障表
开放式耳机	●使用过程中耳机无声 ●通话过程中,对方听不到声音 ●无法充电,充电指示灯不亮。

非保修条例

- 1、因用户使用造成的磨损脏污,如划痕、颜色改变的;以及接触化学试剂、尖锐物体碰伤、掉落挤压变形等人为损坏的情况;
- 2、未经授权维修、碰撞、误用、疏忽、滥用、进水、事故,以及使用非本产品标准配件造成故障的情况;
- 3、撕毁、涂改标贴、伪造防伪标识等情况;
- 4、因不可抗力造成的损坏;
- 5、不符合《性能故障表》所列性能故障的情况。

若有售后服务需求,请联系Mibro客服:

网址: www.mibrofit.com

邮箱: service@mibrofit.com

注意:

说明书中的产品、配件等插图均为示意图,仅供用户参考。由于本产品的更新升级,产品实物与示意图可能会有差异,请以实物为准!

● 商品最终解释权归Mibro品牌所有!

FAQ/疑难解答

一、为什么耳机触控功能有时候无响应?

- 1.可能是未正确触摸到触控区域导致无响应,请参照《使用说明书》的图示;
- 2.连续触摸的速度过慢,请确保触摸2次或者3次操作快速连续完成;
- 3.手指脏污或液体过多,造成触控区域不灵敏,请保持手指表面和耳机按压提示区域干净,再进行触控操作。

二、耳机听不到声音,或耳机一边有声一边无声

- 1.确认耳机处于工作状态;
- 2.确认耳机的音量大小是否合适;
- 3.确认耳机是否与手机正常连接;
- 4.请将耳机放回充电盒内,5秒后再取出重新连接使用;
- 5.请检查耳机电量是否过低,请将故障耳机放回充电盒内充满电再取出使用。

三、耳机通话效果不好

- 1.耳机的有效使用距离为10米,请确认耳机在有效使用距离内,且耳机与手机间无障碍物阻隔;
- 2.检查麦克风孔是否有灰尘或异物堵塞;
- 3.请确认耳机通话音量调节过小/静音;
- 4.请检查耳机电量是否过低,电量过低会影响耳机性能。

四、设备保养

- 1.带锂电池的产品若长时间不使用,请至少确保每三个月充一次电;
- 2.保持产品干燥,勿放在潮湿的地方,以免影响产品内部电路;
- 3.需避免在激烈运动或出汗较多时使用本产品,防止汗水渗透到产品内损坏本产品;
- 4.勿将产品放置在太阳晒射或者温度高的地方。高温会缩短电子部件的使用寿命、损坏电池、使某些塑料部件变形;
- 5.勿试图拆开产品,如果非专业人员,可能会损坏产品;
- 6.勿使用烈性化学制品、清洁剂清洁耳机;
- 7.不要用尖体在产品表面上乱划和用硬体撞击产品,以免损坏外壳和影响外观。

mibro

网 址: www.mibrofit.com
邮 箱: service@mibrofit.com
制造商: 甄十信息科技(上海)有限公司
地 址: 上海市闵行区紫星路588号2幢4015室



V0.2

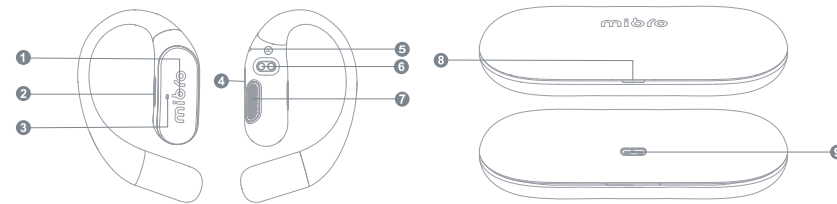
mibro

Mibro OpenEar Pro
User Manual

Thank you for choosing our product, hope the fashionable appearance and high quality stereo can enrich your life.

Note: Please fully charge it with the charging case before the first use when you receive the product.

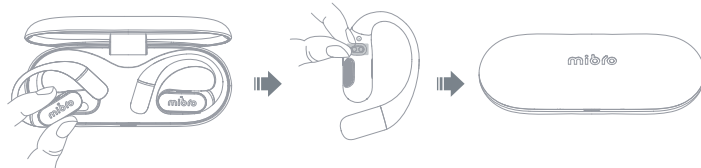
Product Overview



- ① Multi-function Button
- ② Tone hole
- ③ Noise-canceling microphone & headset status indicators
- ④ Tone hole
- ⑤ Microphone
- ⑥ Charging Pin
- ⑦ Soundhole
- ⑧ Charging compartment status indicator
- ⑨ USB-C Charge input

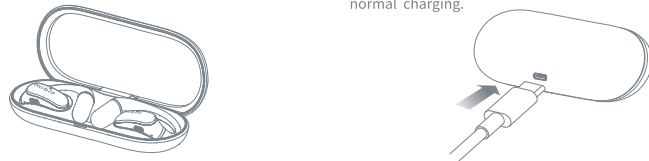
Initial use

- The first time you use the earphone, please pay attention to tear off the protective film on the charging pin, and then put the earphone into the charging box and close the lid, open the box again can be used



Charging

- Earphone into charging compartment, automatic charging
- When the charging compartment is connected to the USB-C charging cable, the charging compartment light blinks for normal charging.



On/Off

- Open the cover, the earphone charging light blinks to indicate power on
- Close the cover, the earphone will be turned off



Wearing Style

- Distinguish between left and right ears
- Rotate backward following the contours of the ear
- Adjust the earphone to fit comfortably



Download APP



"Mibro Fit" APP

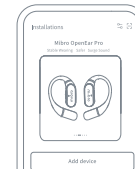
- Please scan the QR code to download the "Mibro Fit" App.
- Please use the "Mibro Fit" App to manually scan the code for pairing.

App Connection Function

- Real-time display of earphone battery level;
- Finding headphones;
- EQ customization;
- Touch function customization;
- Headset software OTA;
- Headset operating instructions.

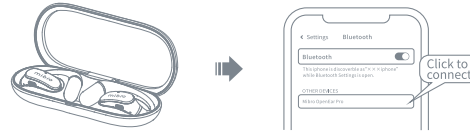
Connecting the APP for the first time

- Open the lid, the earphone will turn on automatically.
- In Mibro Fit, click "Add Device" and select "Open Headset" to bind the device.



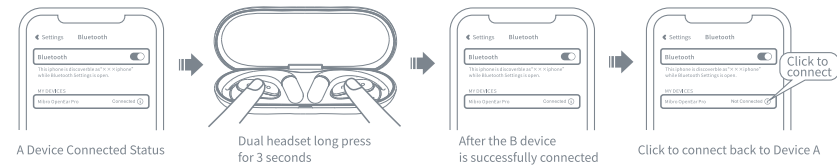
Connecting your phone's Bluetooth for the first time

- Open the lid, the earphone will turn on automatically.
- Turn on your phone's system Bluetooth, search for the Bluetooth name "Mibro OpenEar Pro" and click on it to pair.



Dual-device connection

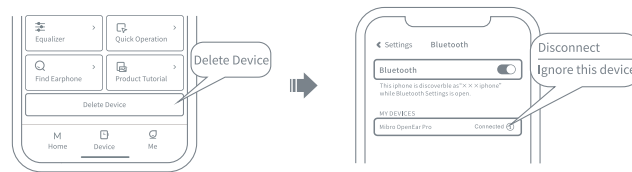
- Headset into the box and open the cover, at the same time, long press the touch button of both headphones for 3 seconds, at this time the headset will disconnect the Bluetooth connection with the current device, and can be paired with the second device.
- After the headset is successfully paired with the second device, you need to manually connect back to the headset once on the first device to switch the sound between the two devices.



Untie and disconnect

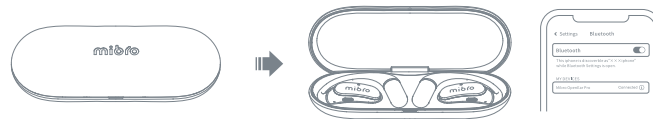
- Delete this device in Mibro Fit

- Cell phone Bluetooth ignores this device



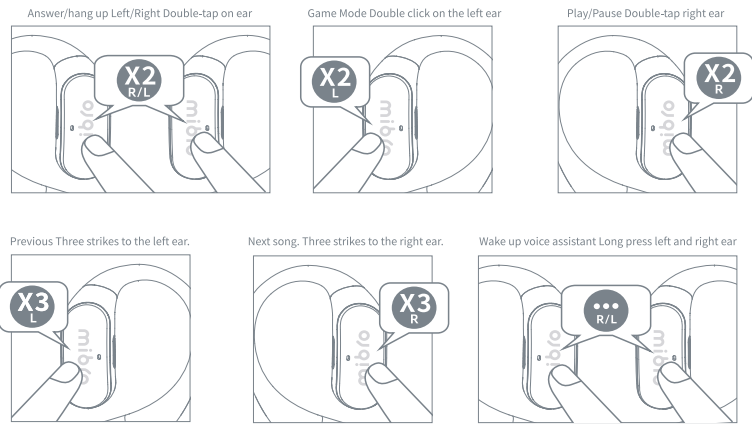
Auto-reconnect

- Open the lid and connect back automatically



Key presses

- The following illustration shows the default button function of the headset, you can also customize the button function operation through the Mibro Fit App.



Basic Parameters

Earbuds Basic Parameters:

BT Model XPEJ011	Battery Capacity 60mAh(Per Earbuds)	Stand By About 60 hours
BT Version V5.4	Charging Time About 1 hours	Input 5V=100mA
BT Range ≤10m/33ft	Play Time About 6 hours	Battery Type Lithium ion polymer
Weight About7.2g(Per Earbuds)	Waterproof IPX4	

Charge Box Basic Parameters:

Battery Capacity 500mAh	Charging Time About 2 hours
Input 5V=500mA	Battery Type Lithium ion polymer
Output 5V=200mA	Weight About 46g

Implementationstandards GB/T9254.1-2021 GB4943.1-2022 CMIIT ID:XXXXXXXXXX

Packing List

Charging case x1 pcs, earphones x2 pcs, charging cable x1 pcs, manual x1 book.



Safety Instructions

Before using and operating the equipment, read and observe the following precautions to ensure optimal performance and to avoid dangerous or illegal situations.



- Product information and certification labels are located inside the charging case.
- To prevent possible hearing damage, do not use this product at high volume levels for extended periods of time.
- Please observe the relevant regulations in your region or country and do not use this product while driving.
- Do not disassemble, hit, crush, put the product into fire or high temperature oven, and avoid mechanically crushing or cutting the battery, which may cause an explosion.
- The product contains a non-removable lithium battery, please do not replace the battery yourself to avoid damage to the battery or equipment. The battery can only be replaced by an authorized service center and must be replaced with the same type of battery.
- Replacing the battery with an incorrect type will damage the protective measures (e.g. fire, explosion, battery leakage, etc.). Do not continue to use the battery if it is severely inflated.
- Do not dispose of the old batteries in the household garbage. Dispose of this equipment and the used batteries according to local laws and regulations.
- Do not use this product in thunderstorms, which can cause the equipment to work abnormally and increase the risk of electric shock.
- Do not subject the battery to extremely high temperatures or extremely low air pressure, which may cause an explosion or leakage of flammable liquids or gases.
- This product is not a toy, the product body and accessories contain small parts may cause children to suffocate or cause other injuries, please place the product out of reach of children.
- If symptoms such as redness and swelling appear on the skin at the site of contact, discontinue use immediately and consult a physician.
- The Bluetooth® word mark and logo are registered trademarks of the Bluetooth SIG, Inc. and the mibro brand has been granted the right to use such marks.

Name and content of hazardous substances

Part name	Hazardous substances					
	Pb	Hg	Cd	Cr(VI)	PBB	PBDE
Earbuds	○	○	○	○	○	○
Battery	✗	○	○	○	○	○
Charge Box	○	○	○	○	○	○
Charge Cable	✗	○	○	○	○	○

This table is prepared in accordance with SJ/T 11364-2014.

- Indicates that the content of the hazardous substance in all homogeneous materials of the component is below the limit specified in GB/T 26572.
- ✗ It means that the content of the hazardous substance in at least one homogeneous material of the component exceeds the limit specified in GB/T 26572.

This product meets the ROHS environmental protection requirements: there is no mature technology in the world to replace or reduce the lead content of some electronic components of circuit components, steel and copper alloys.



The numbers in this logo indicate that the product (except batteries) has an environmental protection use period of 10 years under normal use.

The Eco-Friendly Use Period markings on the components take precedence over any conflicting or different Eco-Friendly Use Period markings on the product. All environmental protection use periods for this product are the safe years of use without leakage of toxic or hazardous substances when the product is used under the conditions of use specified in the product manual.

Trouble shooting and after sales regulations

Name	Trouble shooting
Mibro OpenEar Pro	<ul style="list-style-type: none">● The earbuds is silent during use.● During the call, the other party cannot hear the sound.● Unable to charge, the charging indicator is not on.

Non warranty regulations

1. Wear and dirt caused by users' use, such as scratches and color changes; As well as damage caused by contact with chemical reagents, sharp objects, falling, extrusion and deformation.
2. Unauthorized maintenance, collision, misuse, negligence, abuse, water ingress, accidents, and failures caused by the use of non-standard accessories of the product.
3. Tearing, altering labels, forging anti-counterfeiting marks, etc.
4. Damage caused by force majeure.
5. Non compliance with performance faults listed in the performance fault table.

If you need after-sales service, please contact Mibro customer service:

Website: www.mibrofit.com

Email: service@mibrofit.com

Attention:

The illustrations of products and accessories in the manual are schematic diagrams for users' reference only. Due to the update and upgrading of this product, the actual product may be different from the schematic diagram. Please take the actual product as the standard.

- Mibro brand owns the final right to interpret the goods.

FAQ

A. Why is the headset touch function sometimes unresponsive?

1. The touch area may not be touched correctly resulting in no response, please refer to the diagrams in the "User's Manual";
2. The speed of continuous touch is too slow, please make sure to touch 2 or 3 times to complete the operation quickly and continuously;
3. Dirty fingers or too much liquid, resulting in the touch area is not sensitive, please keep the finger surface and the headset press prompt area clean, then press the headset to prompt the area clean, then press the headset to prompt the area. Please keep the surface of the finger and the headset press prompt area clean, and then touch operation.

B.the headset can not hear the sound, or the headset side of the sound side of the no sound

1. Confirm that the headset is in working condition;
2. Confirm that the volume of the headset is appropriate;
3. Confirm that the headset is normally connected to the phone;
4. Please put the headset back into the charging case, and then take it out after 5 seconds to reconnect it for use;
5. Please check whether the headset power is too low, please put the faulty headset back to the charging box fully charged and then take out to use.

C. the headset call effect is not good

1. The effective use of the headset distance of 10 meters, please make sure that the headset in the effective use of the distance, and the headset and cell phone between the obstacles blocking;

2. Check whether the microphone hole is blocked by dust or foreign objects;
3. Please make sure that the volume of the headset is adjusted too low/mute;
4. Please check whether the headset battery is too low, low battery will affect the performance of the headset.

D. equipment maintenance

1. If the product with lithium battery is not used for a long time, please make sure it is charged at least once every three months;
2. Keep the product dry, do not put in a wet place, so as not to affect the internal circuitry of the product;
3. Avoid using the product during intense exercise or sweating to prevent sweat from penetrating into the product and damaging the product. Avoid using the product during intense exercise or sweating to prevent sweat from penetrating into the product and damaging it;
4. Do not place the product in the sun or high temperature places. High temperatures can shorten the life of electronic. High temperatures can shorten the life of electronic components, damage batteries, and deform some plastic parts;
5. Do not attempt to disassemble the product, which may damage the product if not done by a professional;
6. Do not use strong chemicals, cleaning agents to clean the headset;
7. Do not use the pointed body on the surface of the product scratching and hard body impact products, so as not to damage the shell and affect the appearance.and affect the appearance.

mibro

Web: www.mibrofit.com

Support: service@mibrofit.com

Manufacturer: ZhenShi Information Technology (Shanghai) Co., Ltd.

Address: Room 4015, Building 2, No.588 Zixing Road, Minhang District,
Shanghai, China

Exporter: ZhenShi Information Technology (Shenzhen) Co., Ltd.

Address: RM1401-1403,1408, Tower E, Galaxy World, Minzhi Street,
Longhua District, Shenzhen, China



V0.2

FCC Warning Statement:

This equipment has been tested and found to comply with the limits for a Class B digital device, pursuant to part 15 of the FCC Rules. These limits are designed to provide reasonable protection against harmful interference in a residential installation. This equipment generates, uses and can radiate radio frequency energy and, if not installed and used in accordance with the instructions, may cause harmful interference to radio communications. However, there is no guarantee that interference will not occur in a particular installation. If this equipment does cause harmful interference to radio or television reception, which can be determined by turning the equipment off and on, the user is encouraged to try to correct the interference by one or more of the following measures:

- Reorient or relocate the receiving antenna.
- Increase the separation between the equipment and receiver.
- Connect the equipment into an outlet on a circuit different from that to which the receiver is connected.
- Consult the dealer or an experienced radio/TV technician for help.

Caution: Any changes or modifications to this device not explicitly approved by manufacturer could void your authority to operate this equipment.

This device complies with part 15 of the FCC Rules. Operation is subject to the following two conditions: (1) This device may not cause harmful interference, and (2) this device must accept any interference received, including interference that may cause undesired operation.

The device has been evaluated to meet general RF exposure requirement.