



ANT Communication Technology (Shenzhen) Co., LTD.

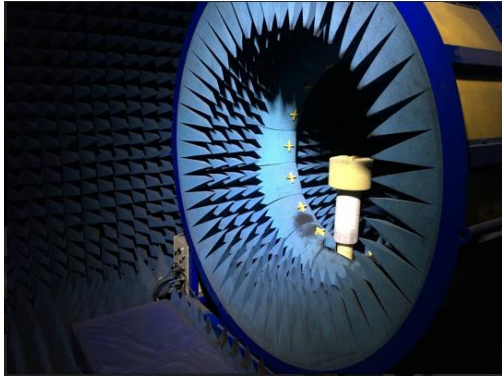
**Manufacturer: ZhenShi Information Technology
(Shenzhen) Co., Ltd**

**Add: RM1401-1403,1408, Tower E, Galaxy World, Minzhi
Street, Longhua District, Shenzhen, China**

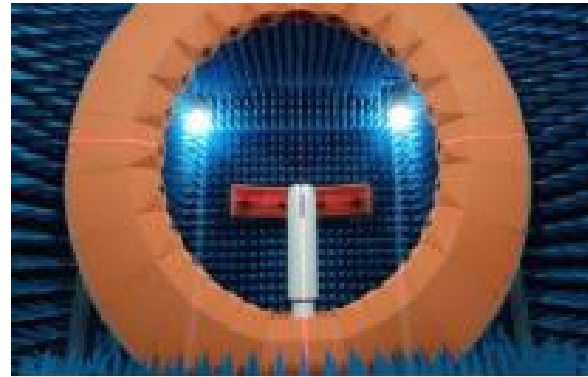
ANT Model: AW1019



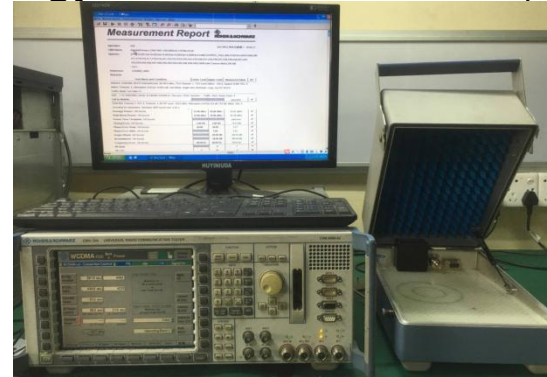
ANT Communication Technology (Shenzhen) Co., LTD.



SATIMO-16



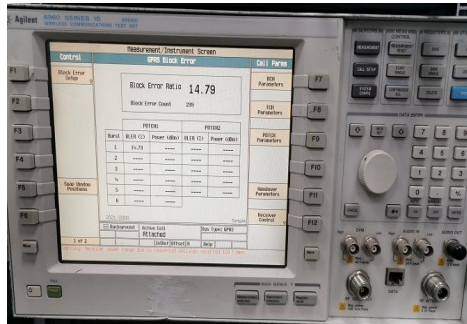
XH-24-5G



CUM GO



CMU RUN



Agilent 8960



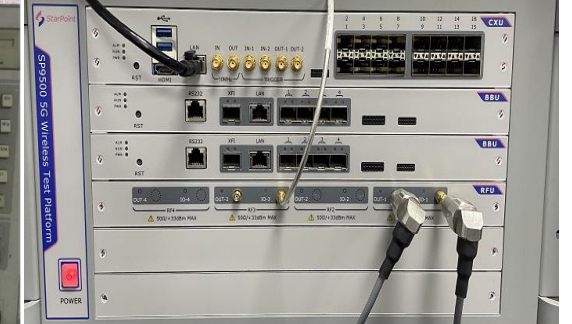
R&S CMW500



Anritsu MT8820C



Agilent 5071C



SP9500

**SATIMO-16
XH-24**

**T: 22°C±3°C
H: 50%±15%**

**2G/3G/4G/5G
GPS/WIFI/BT**

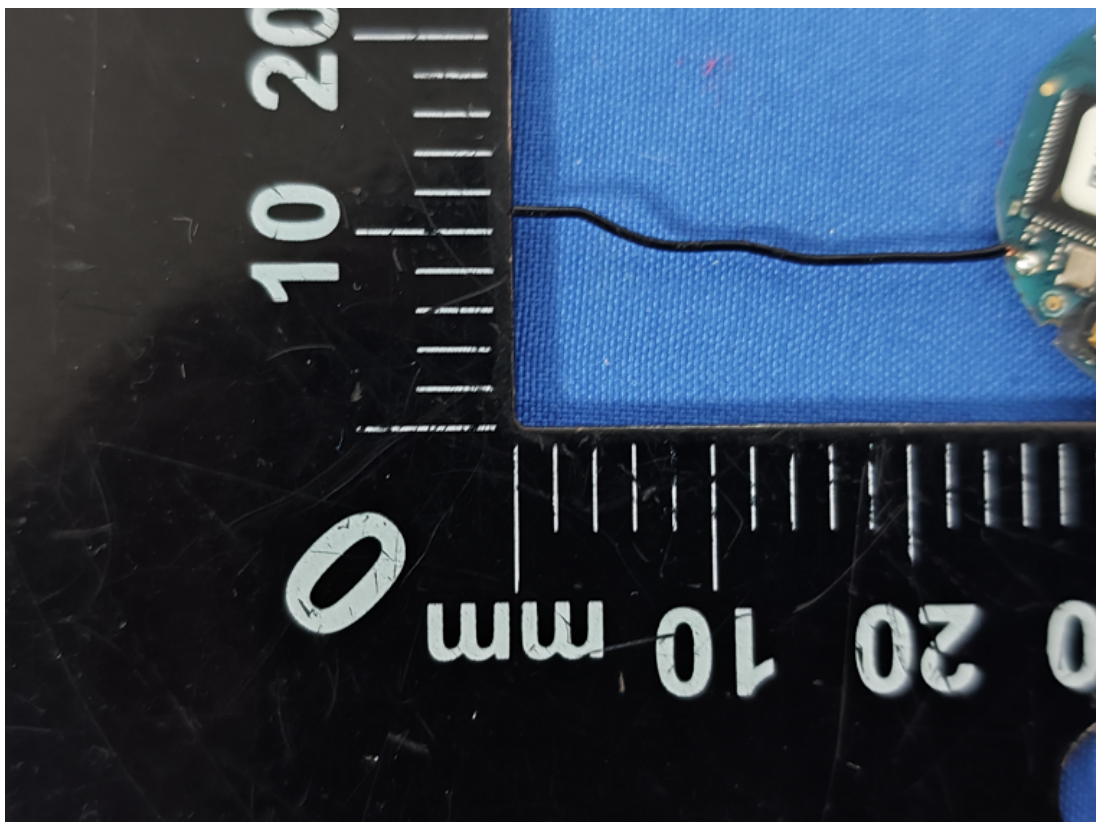
400M-8.5G



ANT Communication Technology (Shenzhen) Co., LTD.

Antenna size

BLE





ANT Communication Technology (Shenzhen) Co., LTD.

BLE(2.4G)			
Freq/ MHz	Effi /db	Freq/%	Gain/dBi
2400	-12.65	5.43	-8.69
2410	-12.63	5.46	-8.34
2420	-13.26	4.72	-8.88
2430	-12.93	5.09	-8.56
2440	-13.1	4.9	-8.74
2450	-13.29	4.69	-8.62
2460	-13.87	4.1	-8.97
2470	-13.85	4.12	-8.59
2480	-13.78	4.19	-9.23
2490	-14.27	3.74	-8.98
2500	-14.49	3.56	-10



ANT Communication Technology (Shenzhen) Co., LTD.

