



ANT Communication Technology (Shenzhen) Co., LTD.

Antenna Datasheet

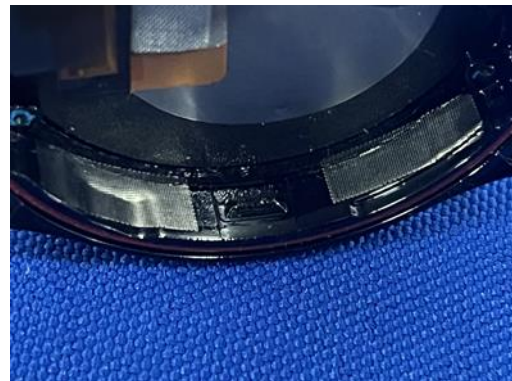
Customer name : Xiao Xun

Project name : AW1018

Datasheet version : RA

Material specifications :

Antenna Photo & Length (mm)

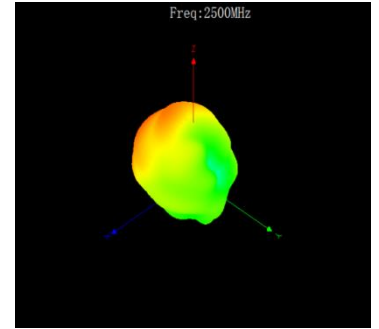
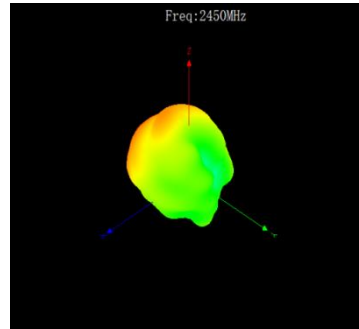
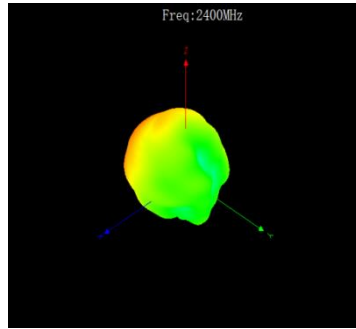
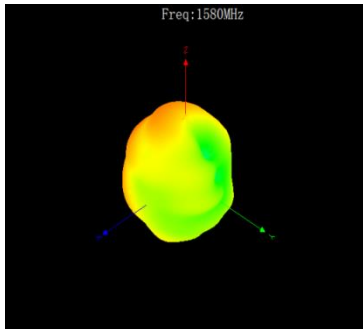
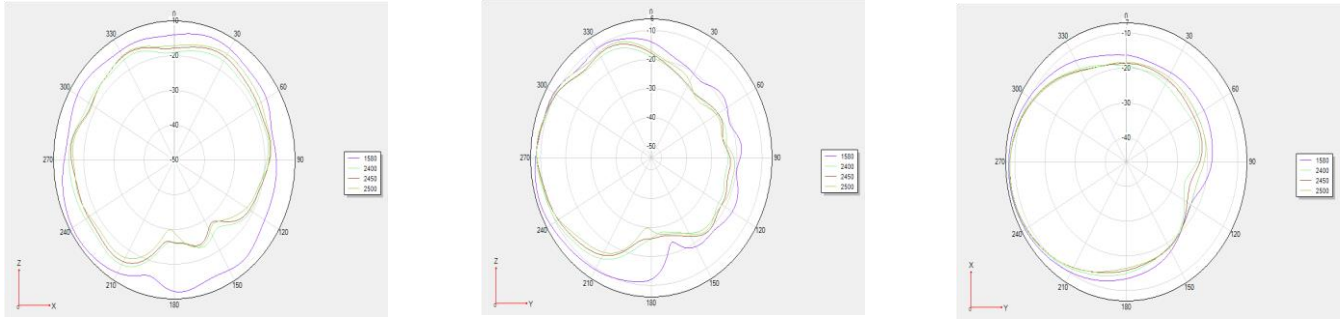


一、BT/GPS ANT

1、Gain & Efficiency & Directional diagram (Wear arms)

GPS				BT			
Freq/ MHz	Effi /db	Freq/%	Gain/dBi	Freq/ MHz	Effi /db	Freq/%	Gain/dBi
1500	-11.75	6.68	-7.4	2400	-14.29	3.72	-7.91
1510	-11.65	6.84	-6.98	2410	-13.89	4.08	-7.98
1520	-11.51	7.06	-6.76	2420	-13.73	4.24	-7.94
1530	-11.31	7.4	-6.78	2430	-13.31	4.67	-8.12
1540	-11.11	7.74	-6.22	2440	-13.22	4.76	-7.53
1550	-10.92	8.09	-6.73	2450	-13.19	4.8	-7.95
1560	-10.57	8.77	-6.37	2460	-13.45	4.52	-7.48
1570	-10.54	8.83	-7.03	2470	-13.28	4.7	-7.82
1580	-10.35	9.23	-6.83	2480	-13.42	4.55	-7.1
1590	-10.51	8.89	-6.93	2490	-13.38	4.59	-7.41
1600	-10.68	8.55	-6.82	2500	-13.39	4.58	-7.98

2、2D/3D Directional diagram



3、Antenna S11



4、Antenna parameters

Technical parameters	
Frequency range	1500-1600MHZ, 2400-2500MHZ
Enter The impedance	50 Ω
VSWR	≤3
Max gain	1500-1600MHZ: -6.22dBi 2400-2500MHZ: -7.1dBi
Environment parameters	
Operating temperature	-45°C--+85°C
Storage temperature	-45°C--+85°C

二、Test Equipment

Test Environment and Equipment

Test system	Testing environment	Active	Passive
SATIMO-16	Temperature 22°C±3°C Humidity 50%±15%	2G/3G/4G/5G GPS/WIFI/BT	400M-8.5G
XH-24			