

# Antenna specification

Company Name

Shenzhen Lepai Digital Technology Co.,LTD

Company address

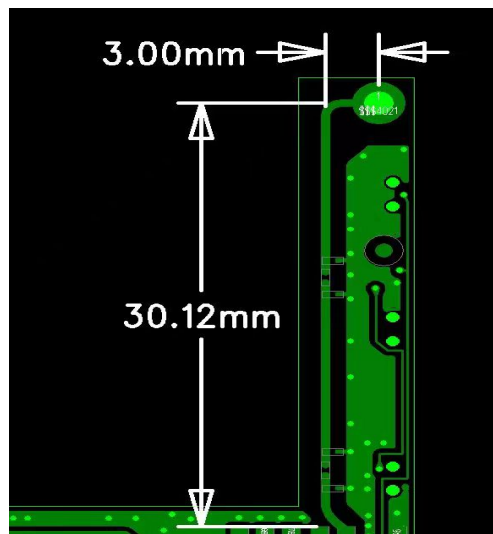
202, 2nd floor, hongzhengang industrial zone, Hangcheng Avenue, Xixiang Street, Baoan District, Shenzhen City

## Applications

※Bluetooth Home RF

※ISM band 2.4GHz applications

### 1. Dimensions



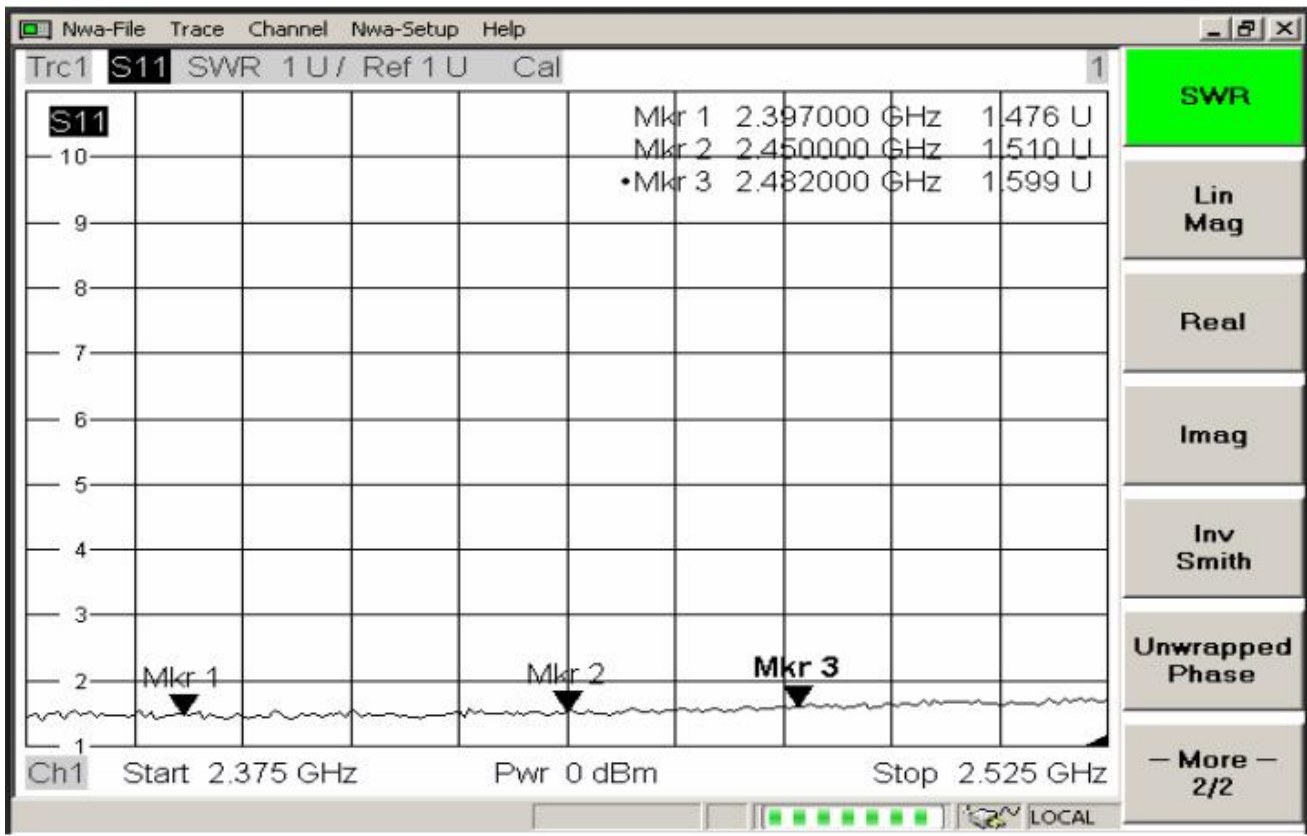
### 2. Specifications

number	Item	Specifications
1	Working Central Frequency	2441 MHz
2	Band Width	(2402-2480)MHz
3	Gain	0dBi
4	VSWR	≤2.0
5	Antenna type	PCB antenna
6	Azimuth Beam width	Omni - directional
7	Impedance	50ohm
8	Modulation mode	GFSK

### 3. simulation parameter

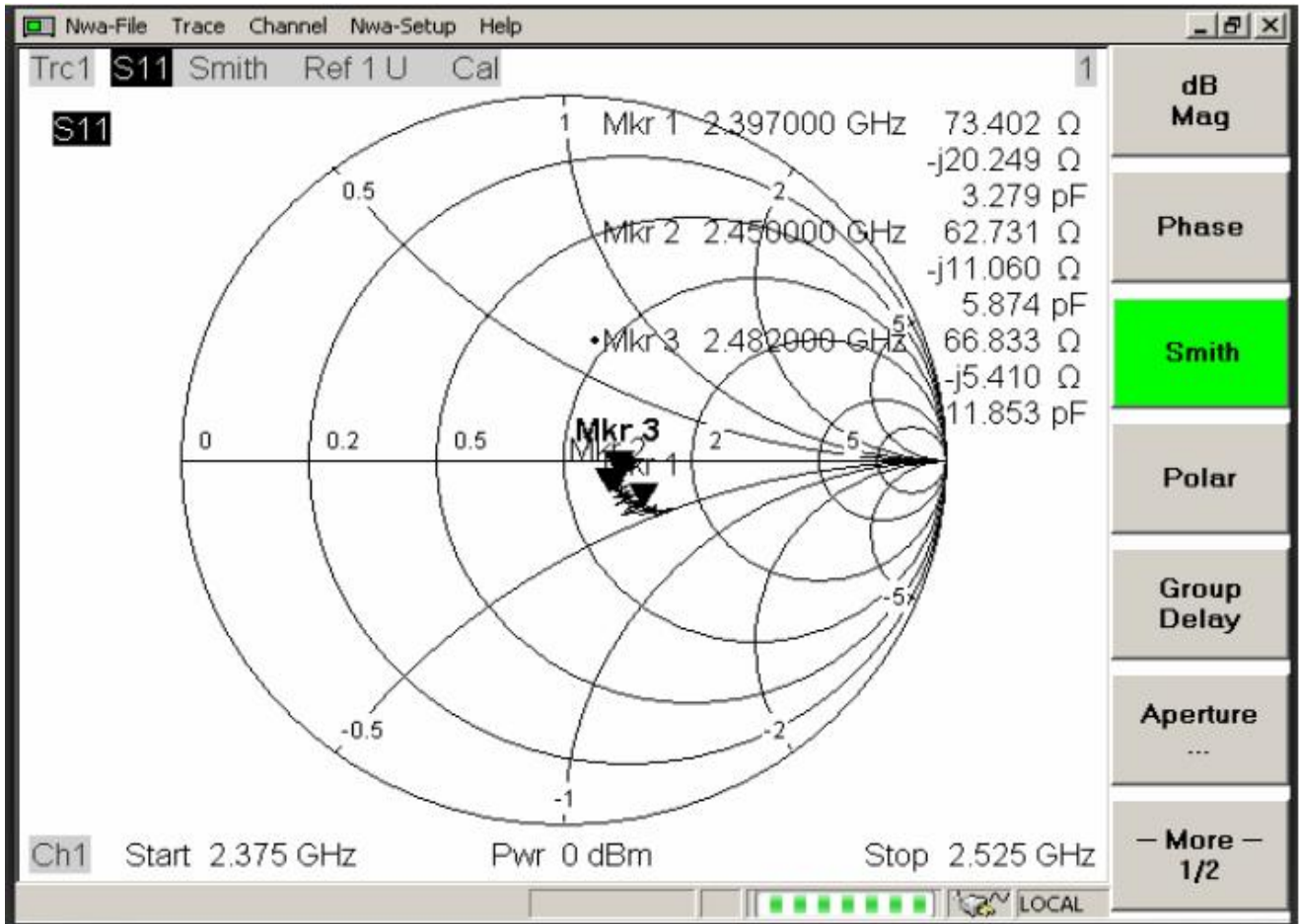
#### ① VSWR

Mkr1: 2397MHz 1.47    Mkr2: 2450MHz 1.51    Mkr3: 2482 MHz 1.59



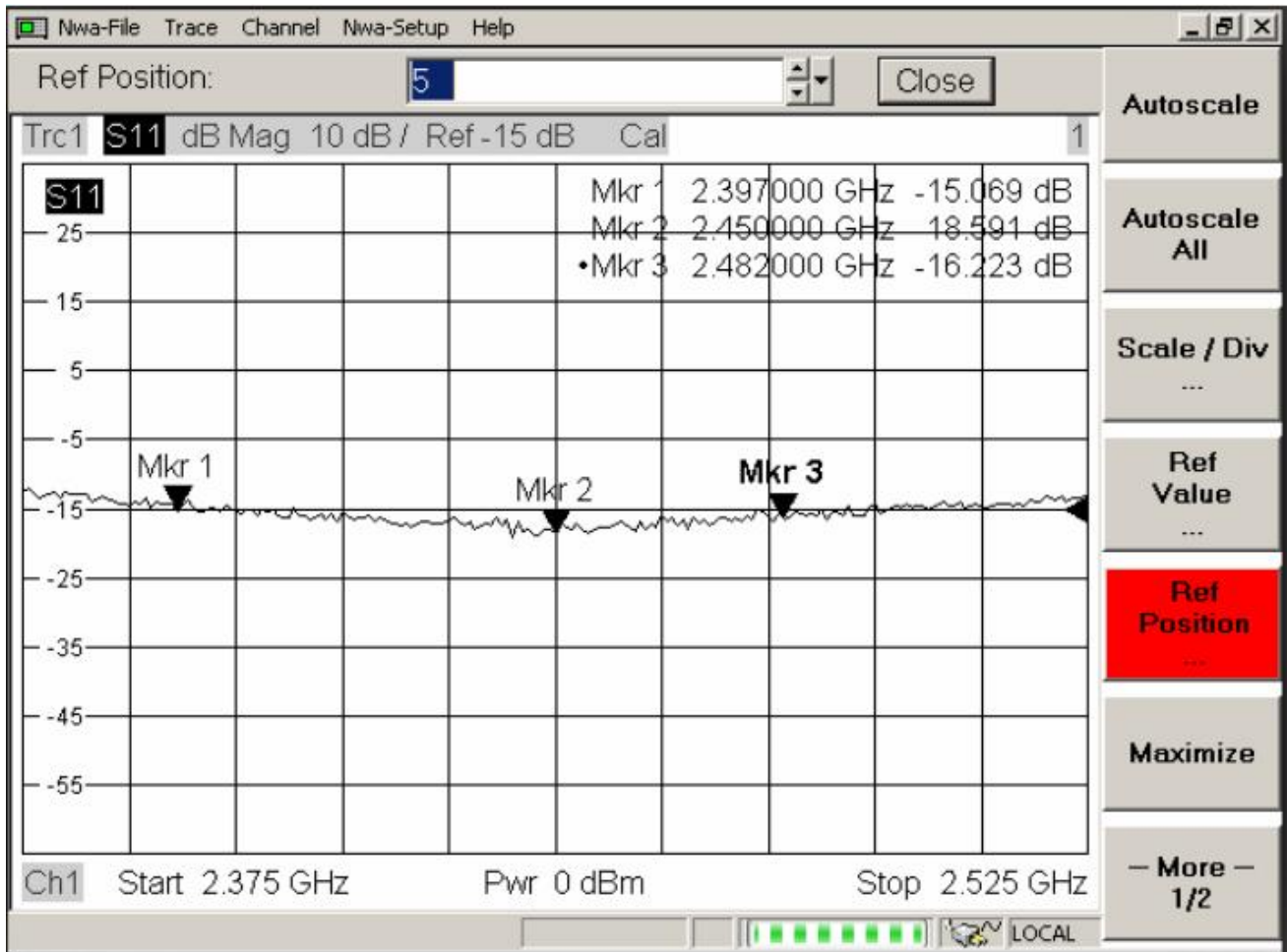
## ②Smith Char

Mkr1: 2397MHz 73.4    Mkr2: 2450MHz 62.7    Mkr3: 2482MHz 66.8



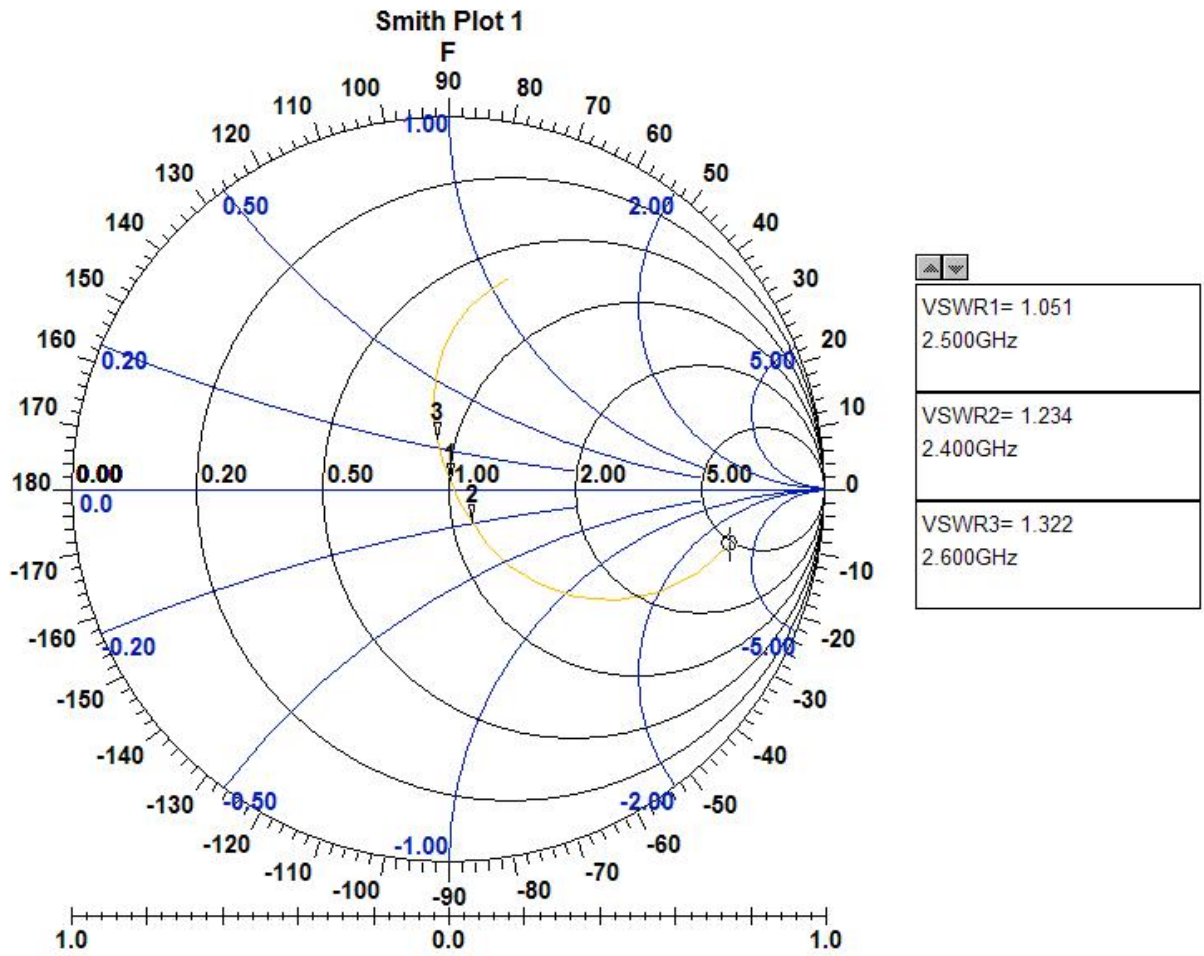
### ③Return Loss

Mkr1: 2397MHz -15 Mkr2: 2450MHz -18 Mkr3: 2482 MHz -16



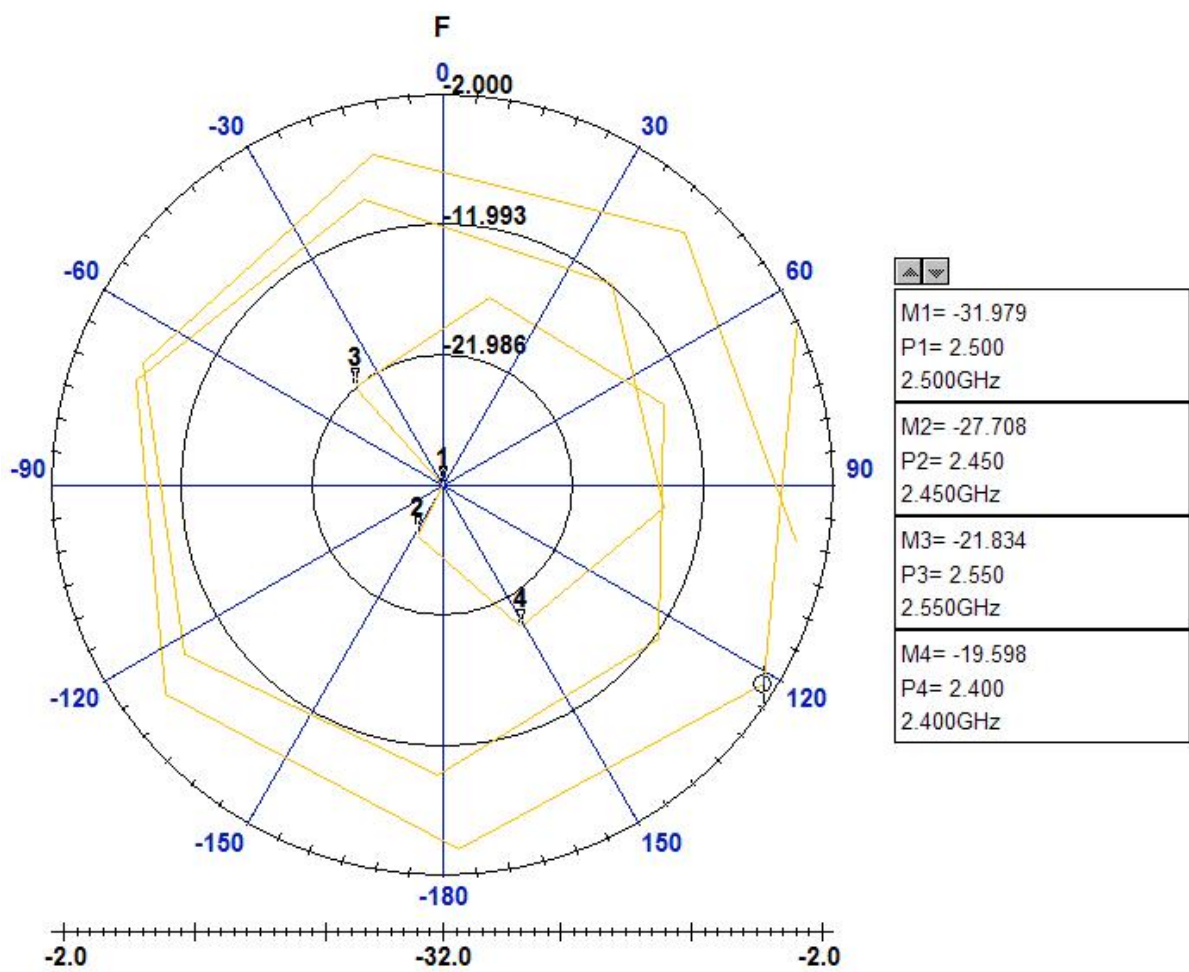
#### ④Smith Char

Mkr1: 2400MHz 1.234      Mkr2: 2500MHz 1.051Mkr3: 2600MHz 1.322



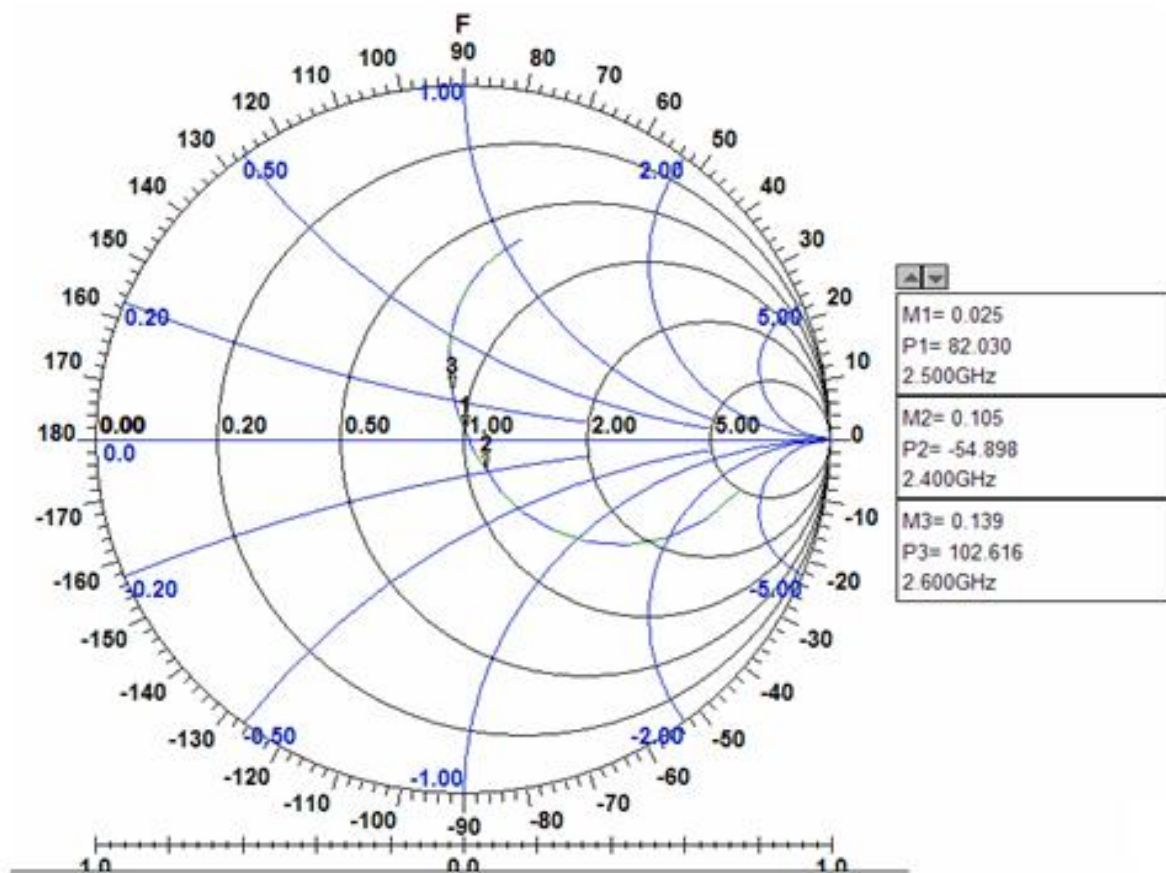
### ⑤Return Loss

Mkr1: 2400MHz -19.59    Mkr2: 2450MHz -27.70Mkr3: 2500MHz -31.97    Mkr4:  
2550MHz -21.83



### ⑥Phase

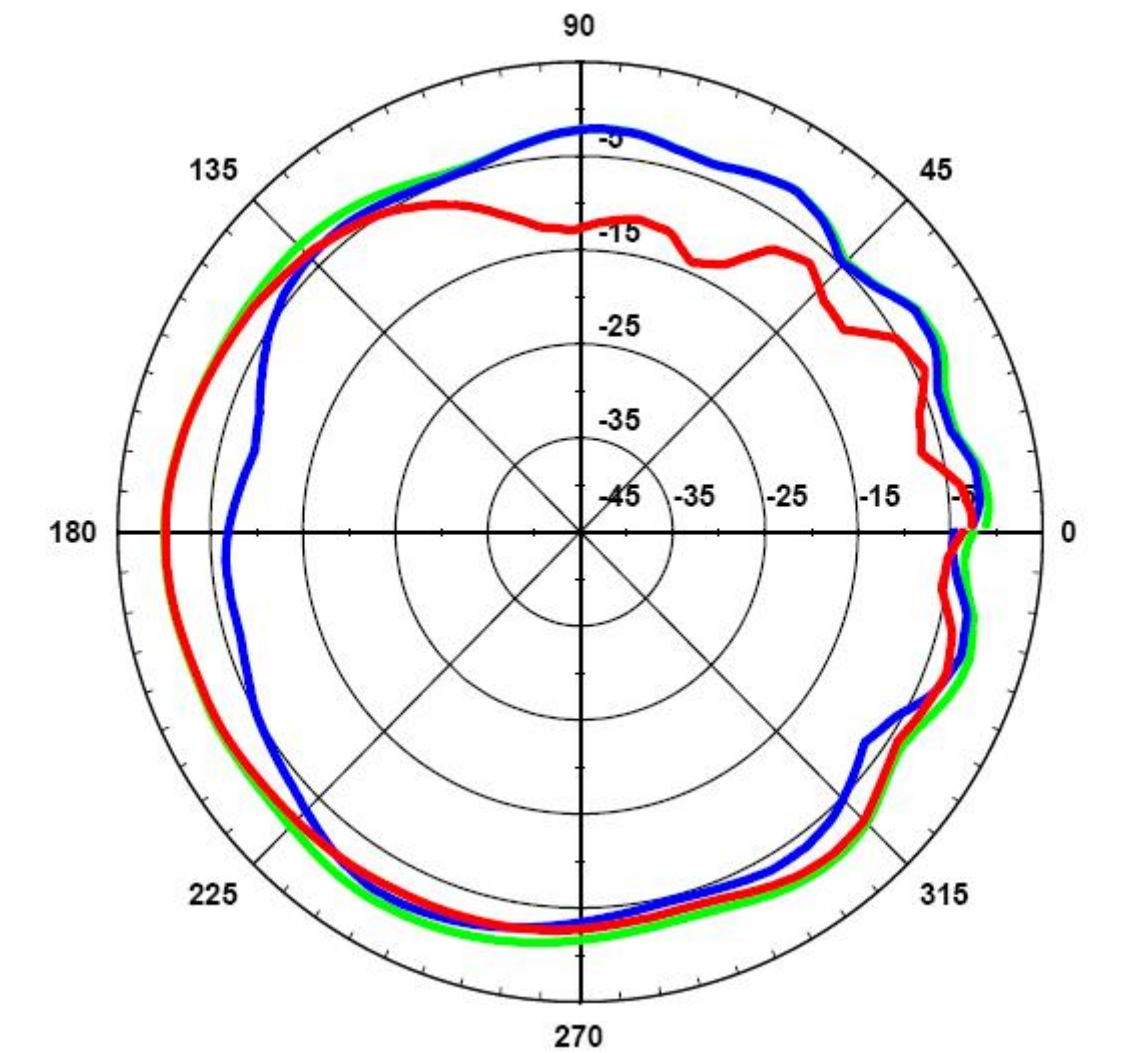
Mkr1: 2400MHz -54.89    Mkr2: 2500MHz -82.03    Mkr3: 2600MHz -102.6





#### 4. Radiation Patterns

XY-plane ————  
XZ-plane ————  
YZ-plane ————



- 3DRadiation pattern

