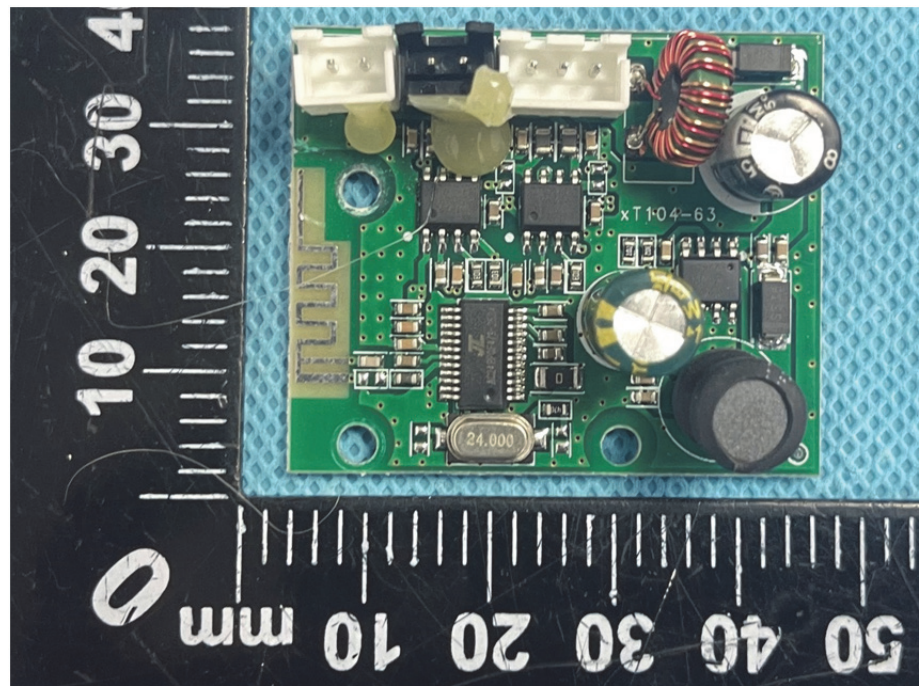
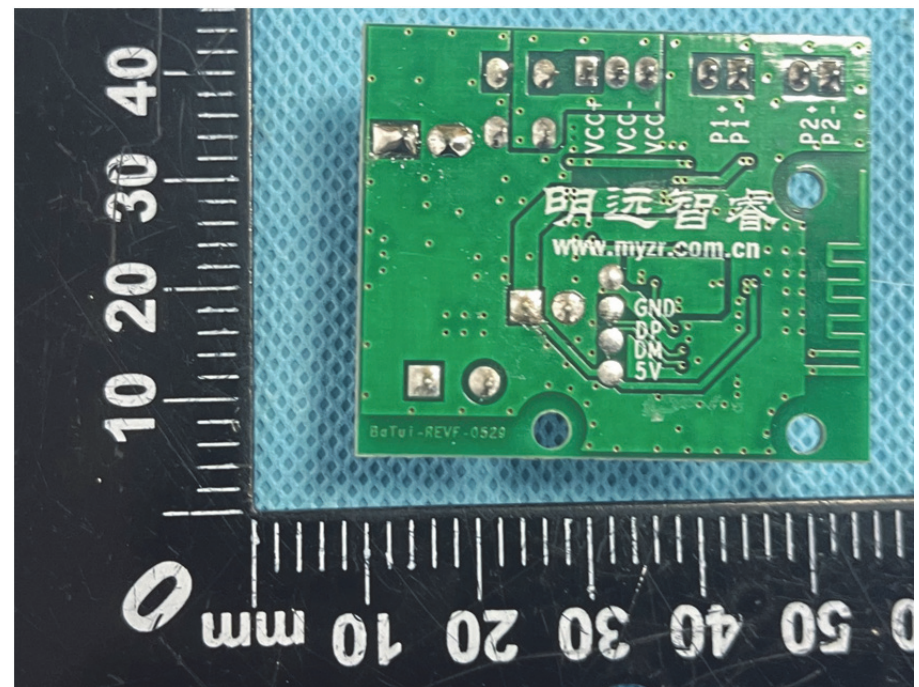
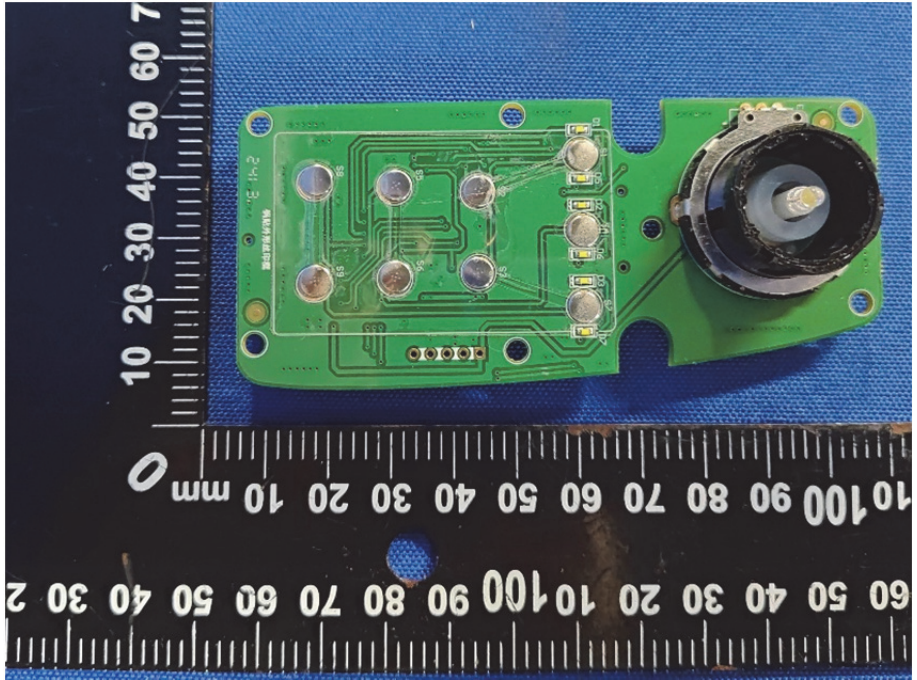
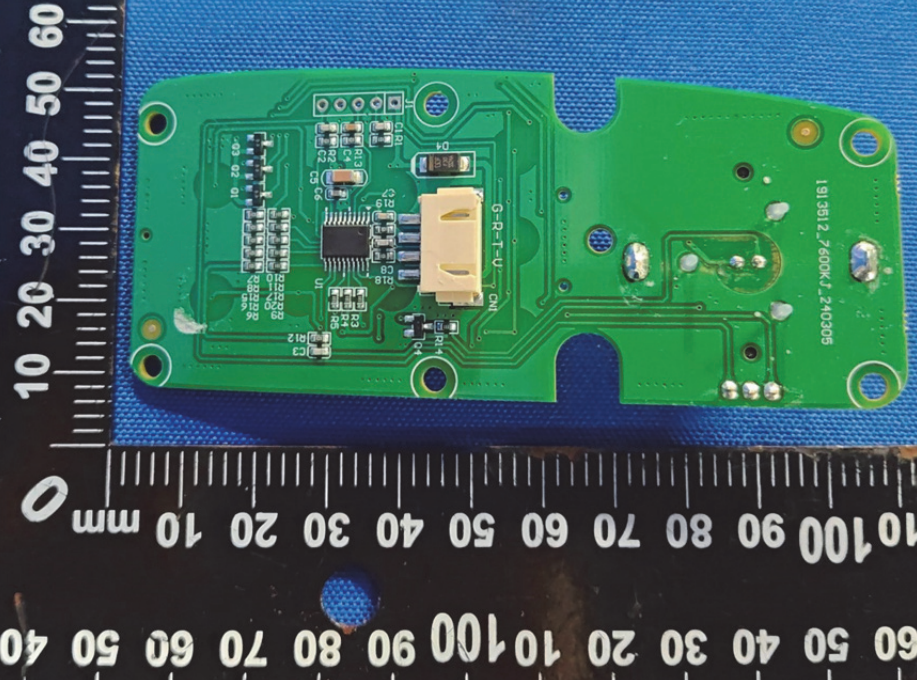


Solder  
Board-Component  
View 9

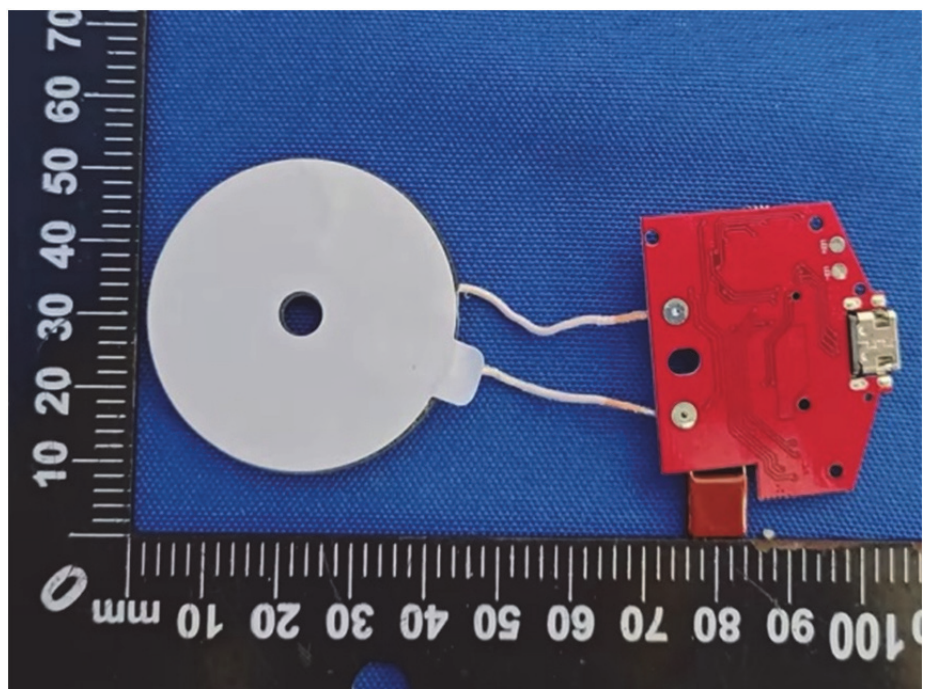


Solder  
Board-Component  
View 10

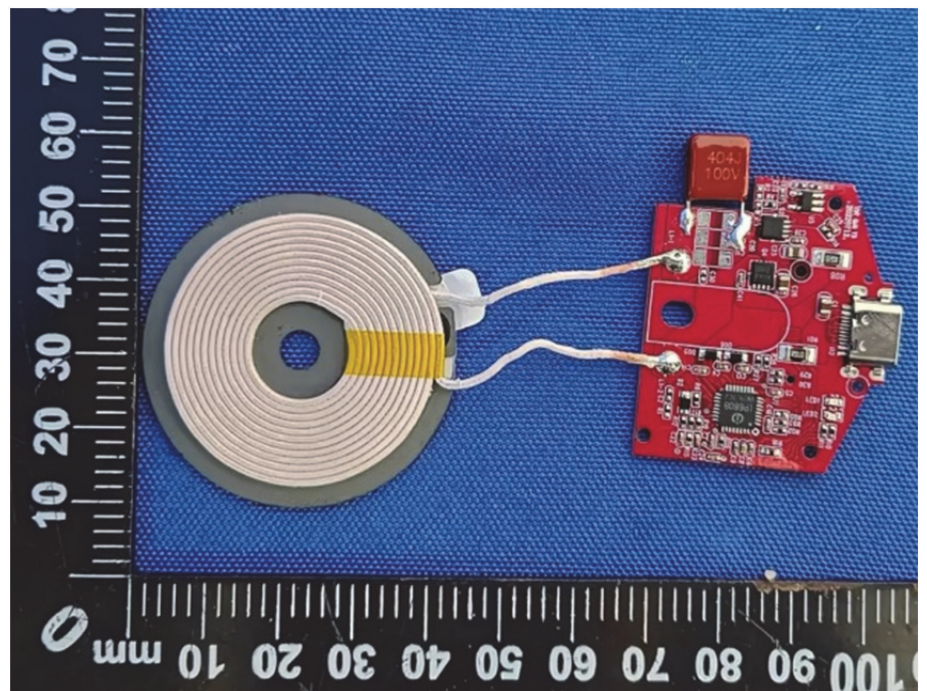


<p><b>Solder Board-Component View 11</b></p>	 <p>This image shows the front view of a green PCB component. A large lens assembly is mounted on the right side. Several surface-mount components, including resistors and capacitors, are visible on the board. A ruler is placed below the component for scale, showing measurements in millimeters.</p>
<p><b>Solder Board-Component View 12</b></p>	 <p>This image shows the reverse side of the green PCB component. A central microcontroller chip is prominent, surrounded by various surface-mount components like resistors and capacitors. A connector is visible on the right side. A ruler is placed below the component for scale, showing measurements in millimeters.</p>

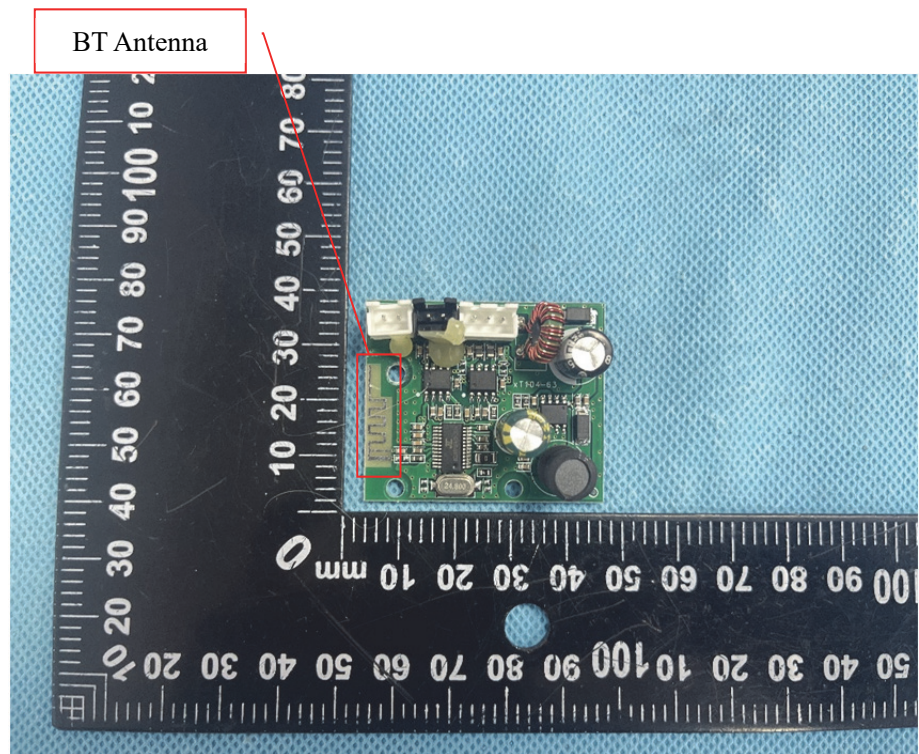
**Solder  
Board-Component  
View 13**



**Solder  
Board-Component  
View 14**



Antenna View 1



Antenna View 2

