

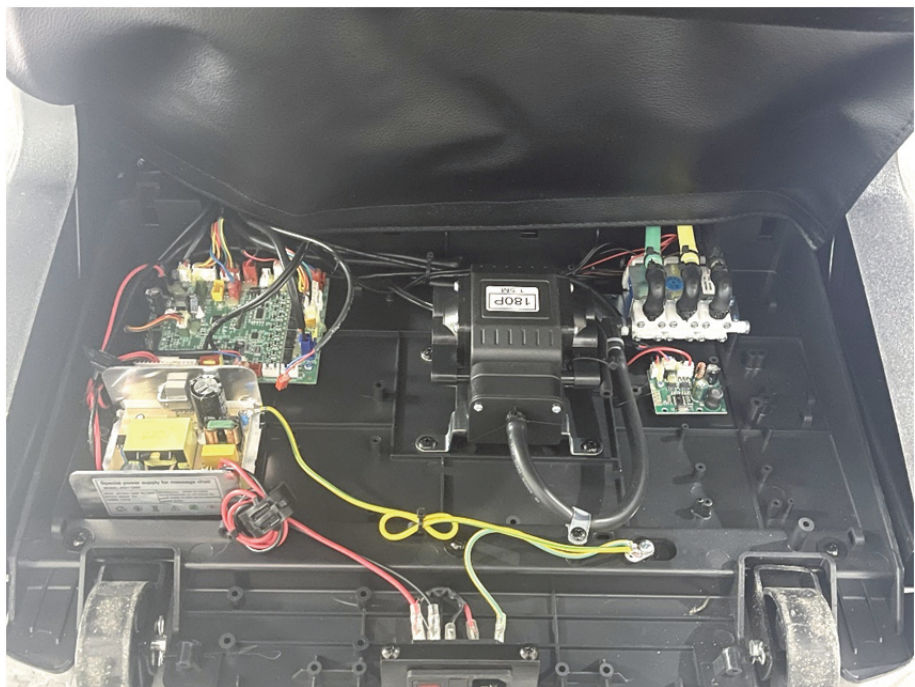
### EXHIBIT 3 - EUT INTERNAL PHOTOGRAPHS

---

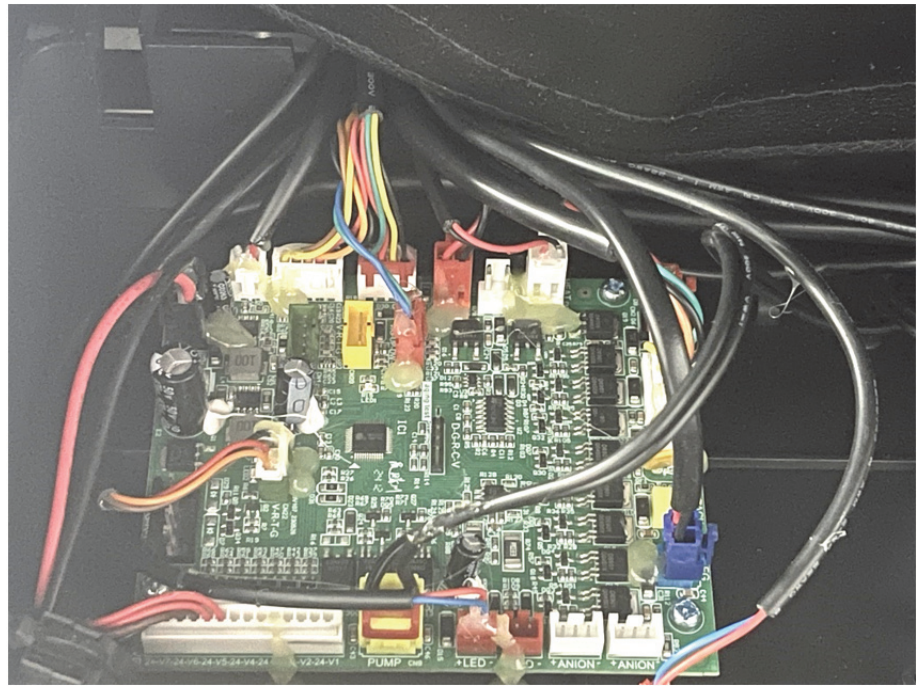
**EUT Housing and Board View 1**



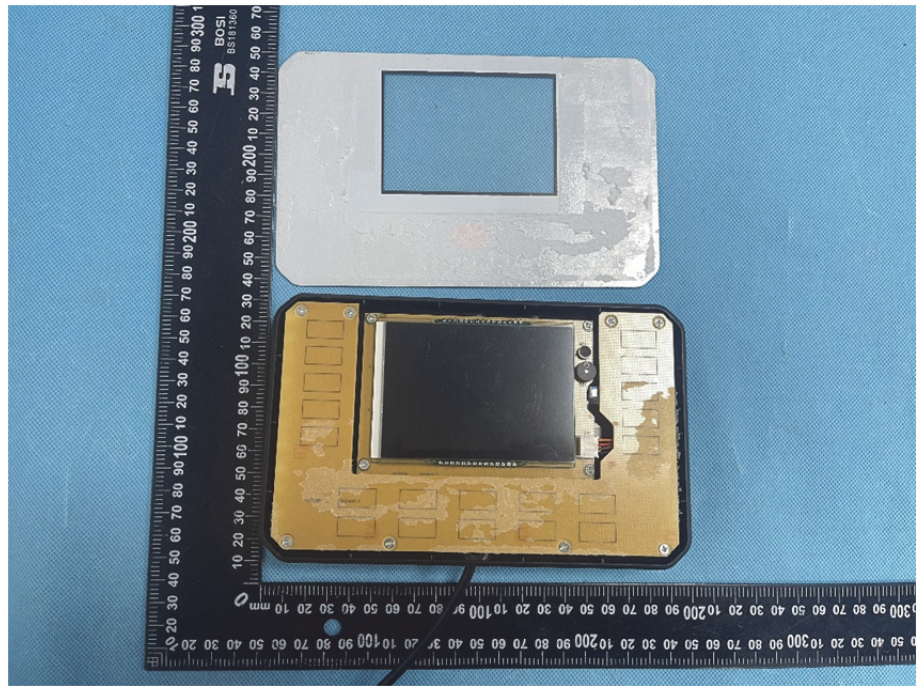
**EUT Housing and Board View 2**



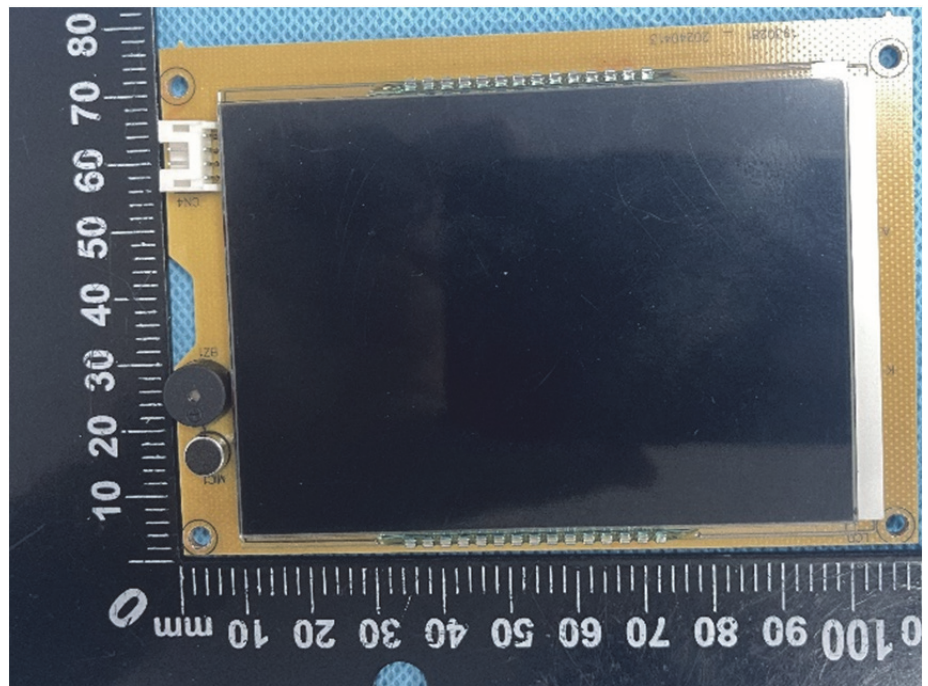
**EUT Housing and Board View 3**



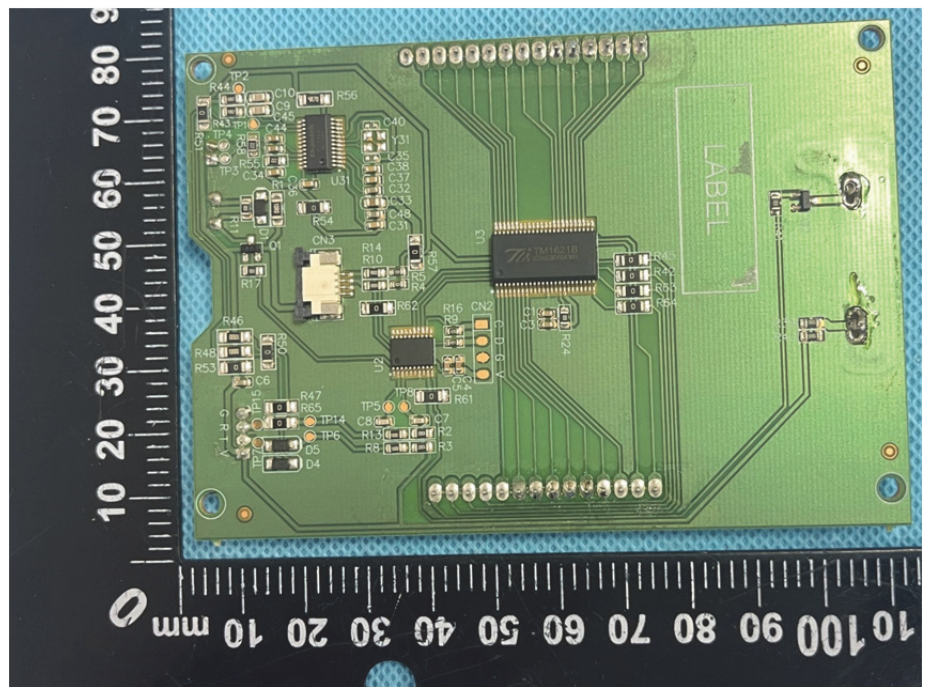
**EUT Housing and Board View 4**

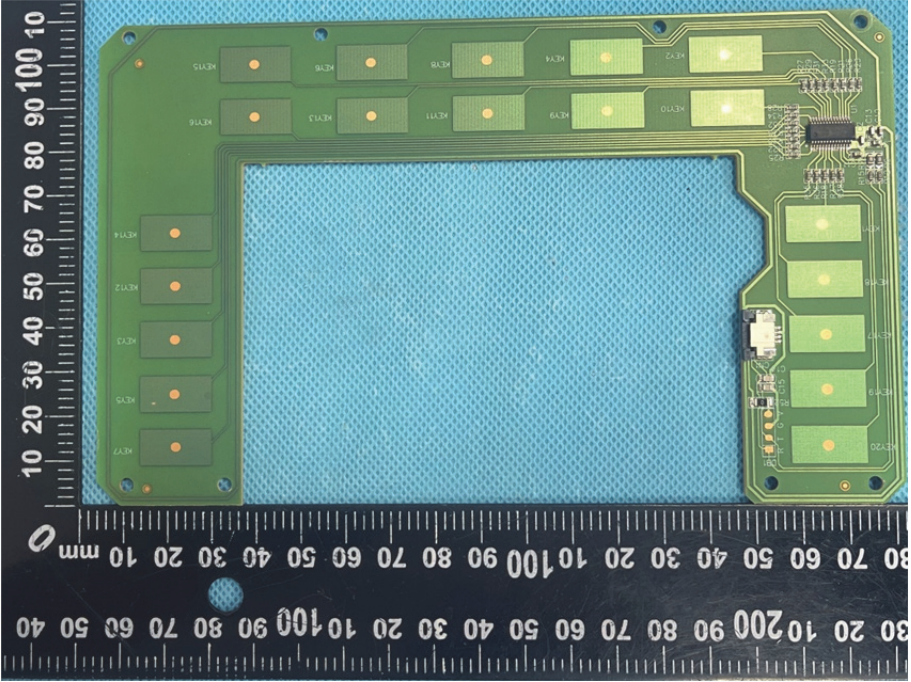
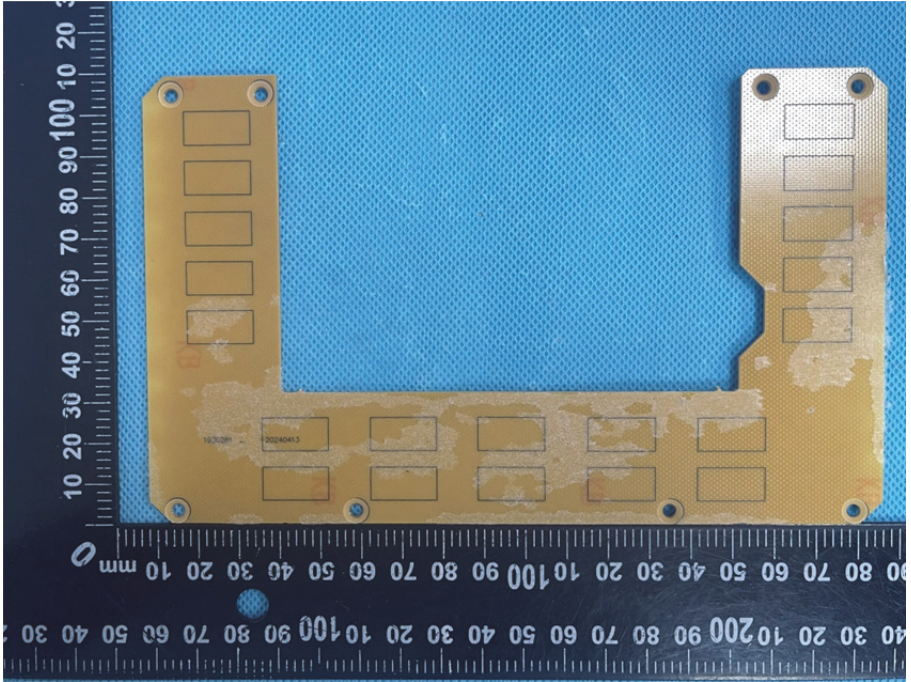


**Solder  
Board-Component  
View 1**

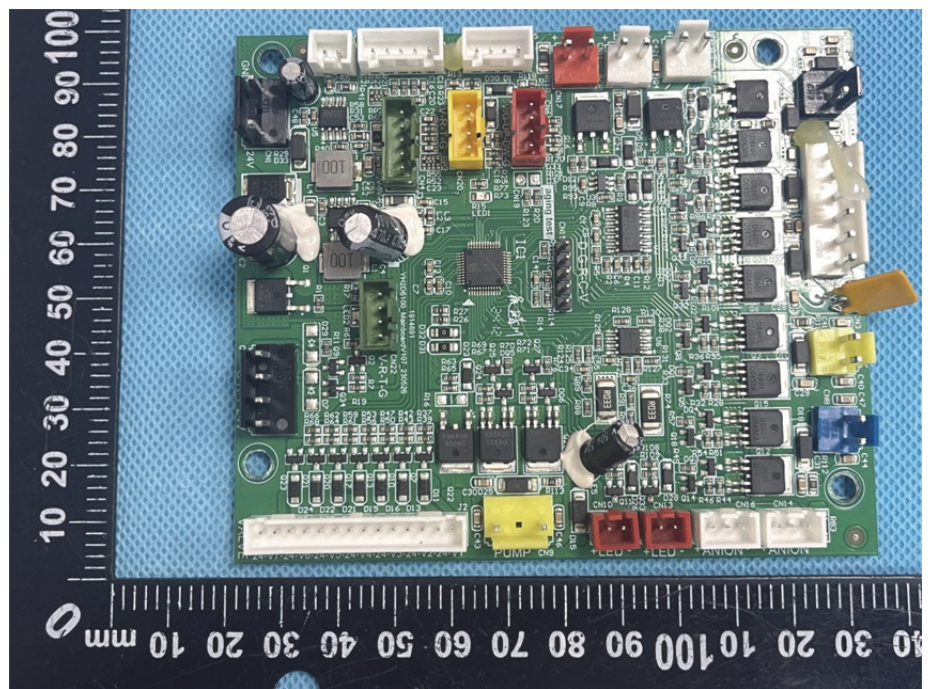


**Solder  
Board-Component  
View 2**

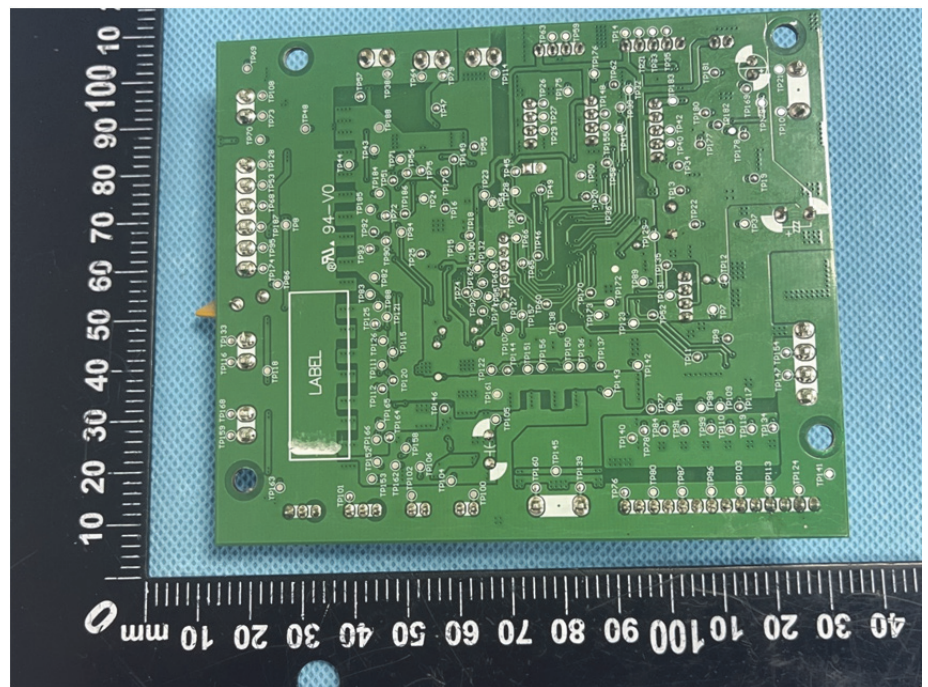


<p><b>Solder Board-Component View 3</b></p>	 <p>A photograph of a green printed circuit board (PCB) with a blue textured surface. The board is populated with several components, including a central integrated circuit (IC) and various surface-mount components. The board is placed on a black ruler with white markings in millimeters. The ruler shows measurements from 0 to 100 mm on the left and 0 to 200 mm on the bottom. The board is oriented vertically, with the ruler's 0 mark at the top left corner.</p>
<p><b>Solder Board-Component View 4</b></p>	 <p>A photograph of a gold-colored PCB with a blue textured surface. The board is populated with several components, including a central integrated circuit (IC) and various surface-mount components. The board is placed on a black ruler with white markings in millimeters. The ruler shows measurements from 0 to 100 mm on the left and 0 to 200 mm on the bottom. The board is oriented vertically, with the ruler's 0 mark at the top left corner.</p>

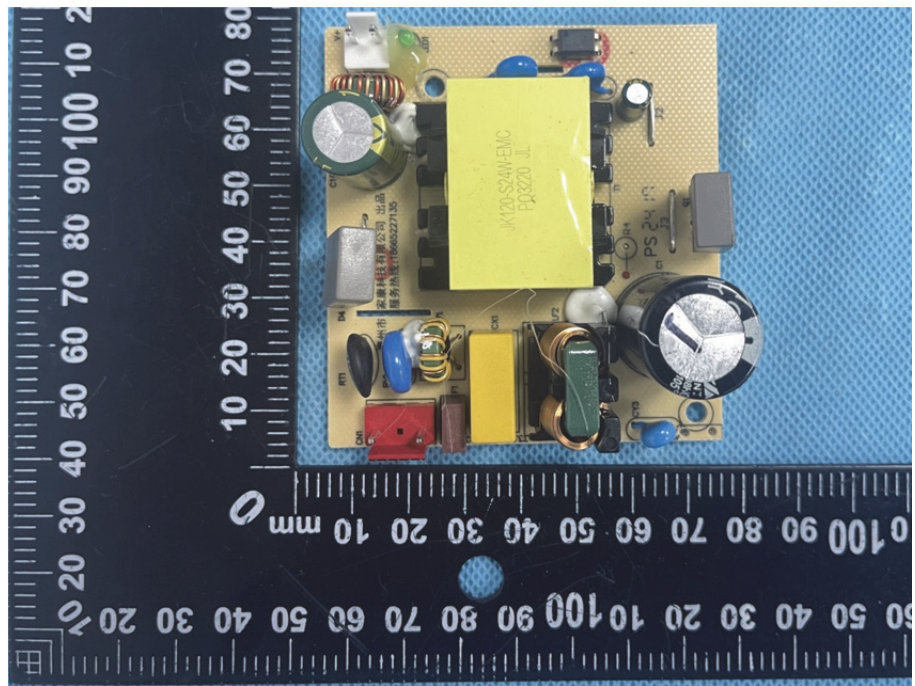
**Solder  
Board-Component  
View 5**



**Solder  
Board-Component  
View 6**



**Solder  
Board-Component  
View 7**



**Solder  
Board-Component  
View 8**

