

Raptor Antenna Datasheet

天线类型 Antenna Type: 印刷式天线 PCB Antenna

天线型号 Antenna Model: Raptor BS Sub1G Antenna

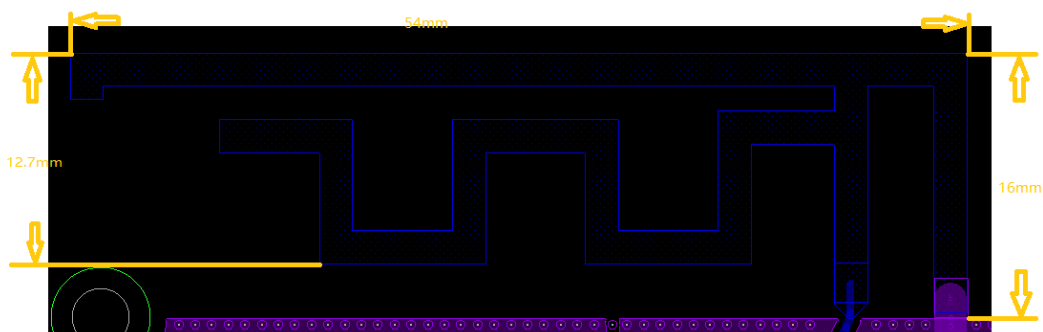
阻抗 Impedance: 50Ω

极化方式 Polarization: 线性 Linear

频率范围 Frequency Range: 860~920MHz

天线增益 Max Peak Gain: 2.36dB

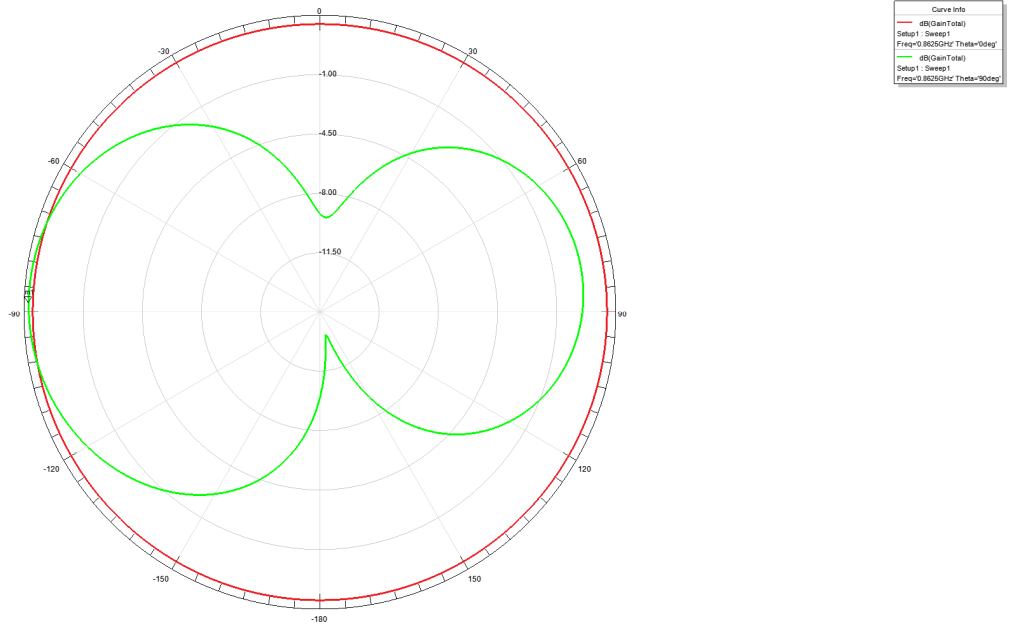
制造商 Manufacturer: Willand



天线辐射图 Antenna Radiation Pattern

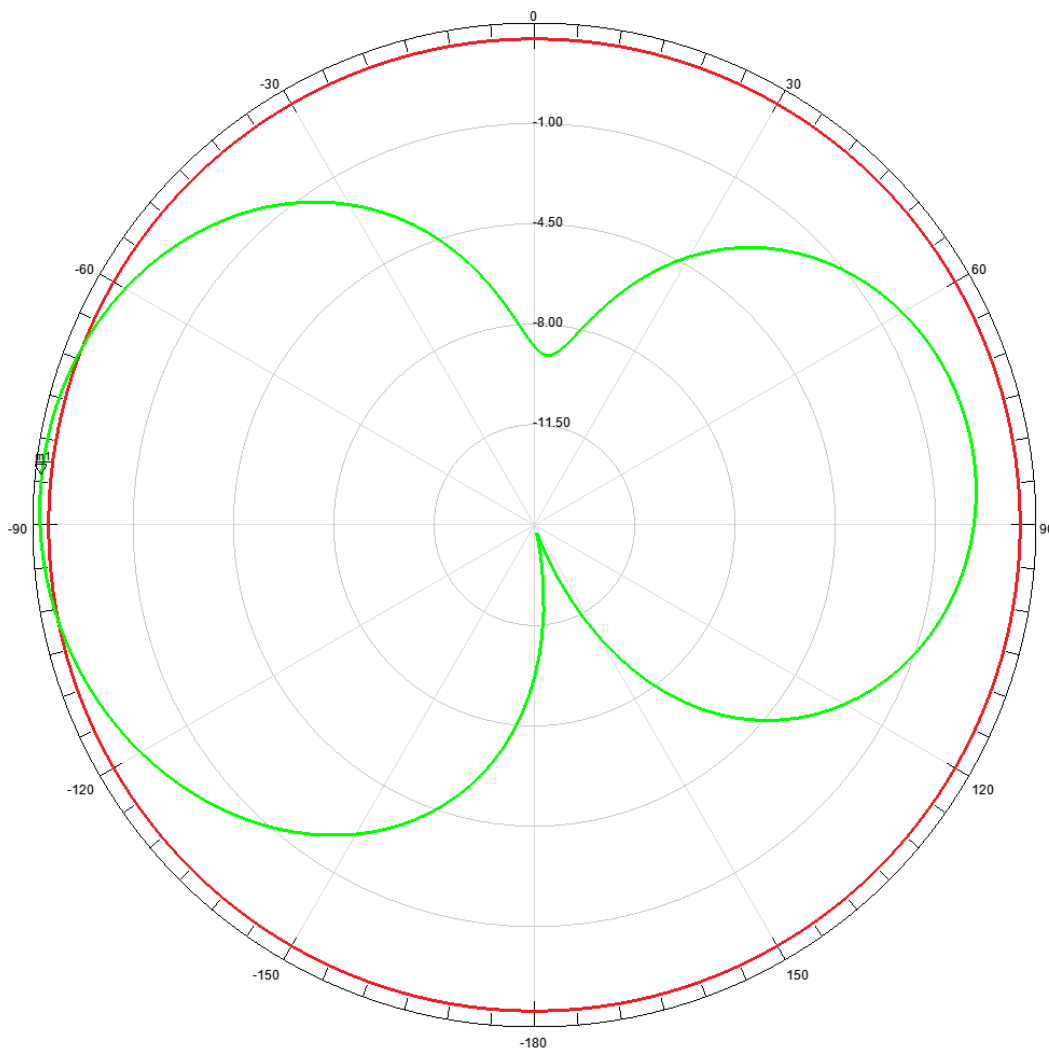
Gain Total:

862.5MHz 2.23dB



Gain Total:

900MHz 2.275dB



Gain Toal:

920MHz 1.48dB

