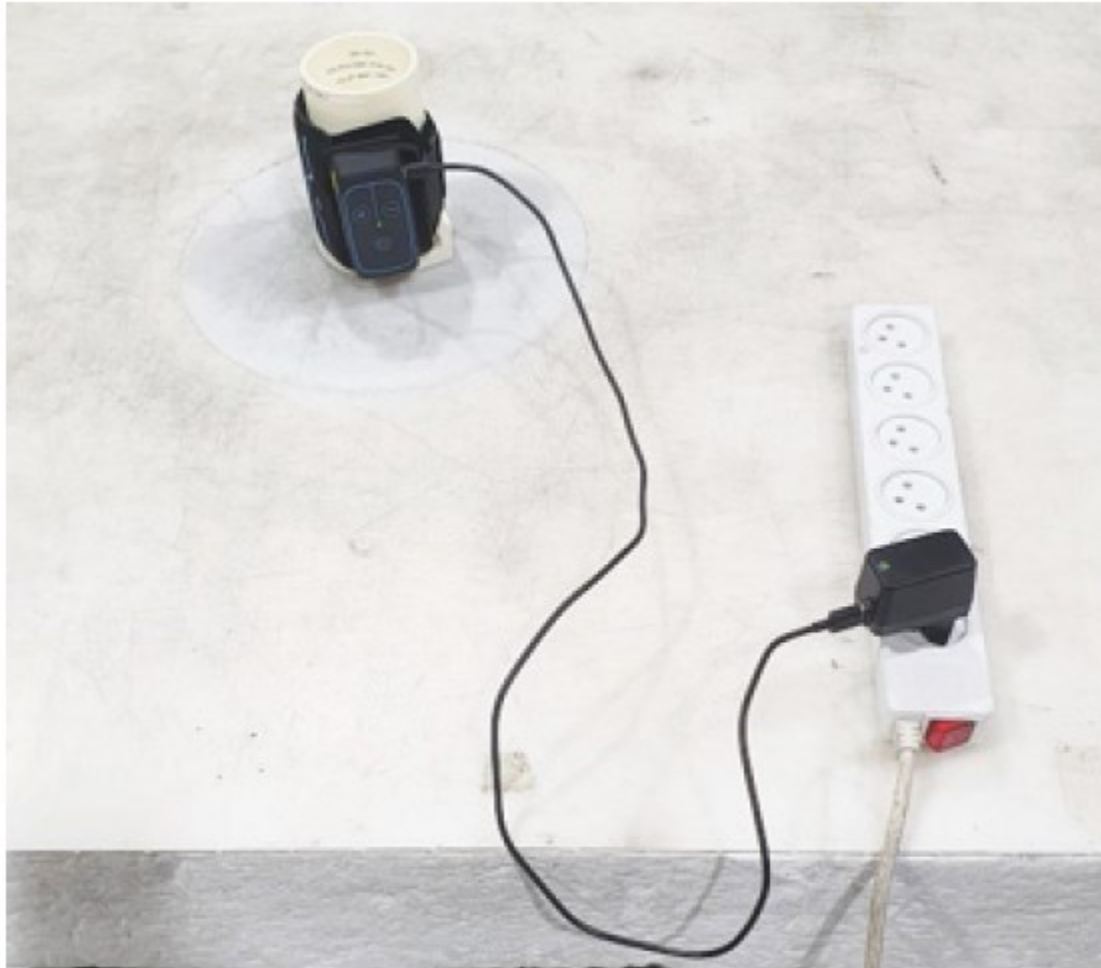




Picture # 9.
Conducted emission test setup with Power Adapter 1

Figure 1 - Conducted emission test setup with Power Adapter



Picture # 5.
EUT test setup – charging mode

Figure 2 - EUT test setup – charging mode



Picture # 6. Radiated emission test setup - Operation mode



Picture # 7. Radiated emission test setup – Charging mode

Figure 3 - Radiated emission test setup – Charging mode

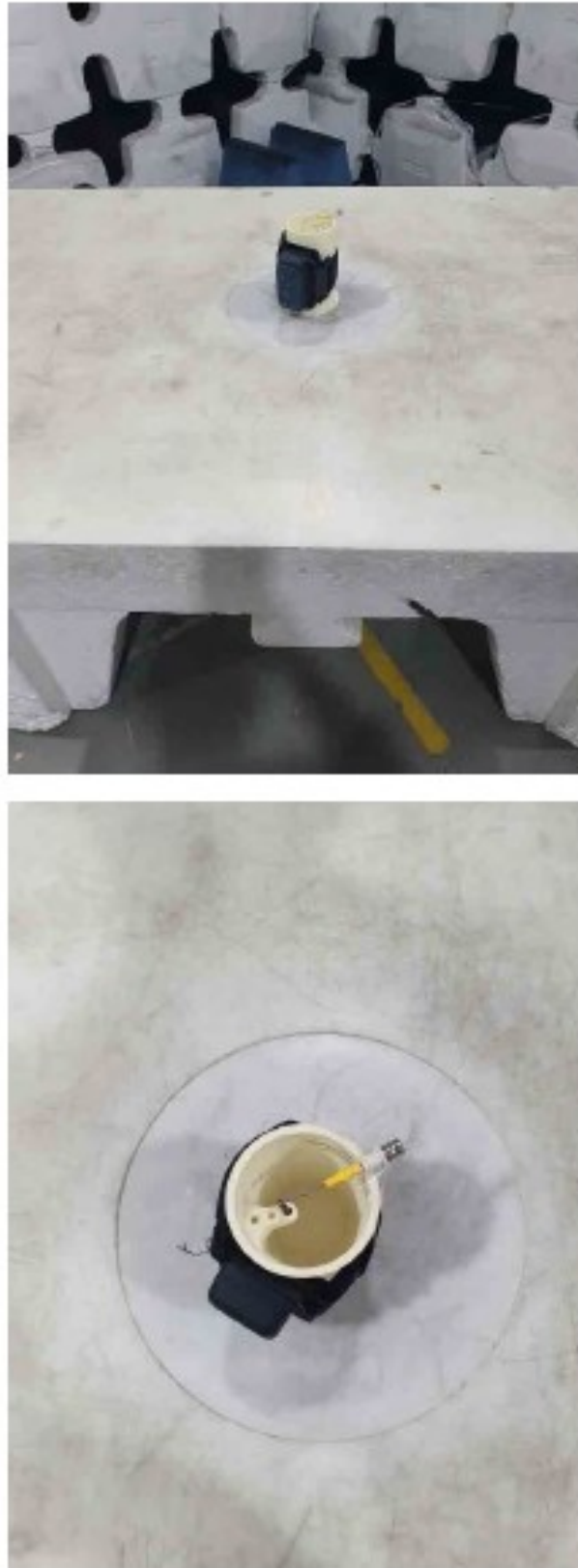


Picture # 8.
Radiated Emission test setup above 30 MHz.

Figure 4 - Radiated Emission test setup above 30 MHz



Picture # 6.
Radiated Emission test setup below 30 MHz.
Figure 5 - Radiated Emission test setup below 30 MHz



Picture # 7.
Radiated Emission test setup.

Figure 6 - Radiated Emission test setup.



Power Adapter 1

Power Adapter 2

Figure 7 - Two Power Adapters used in tests. General view and ID label