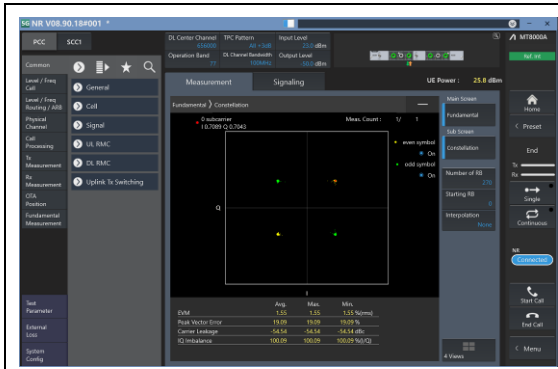
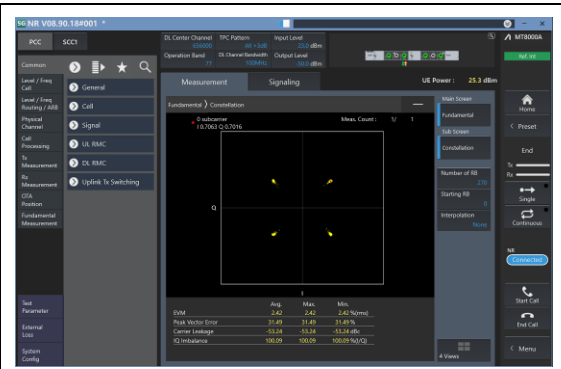


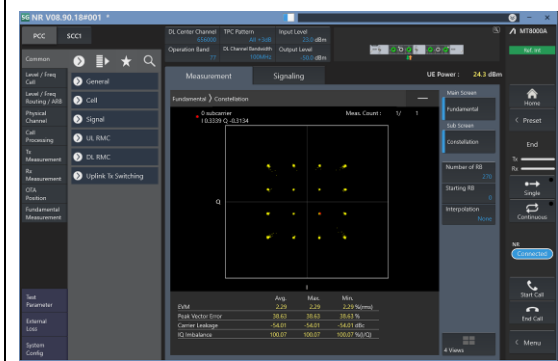
Test Graphs



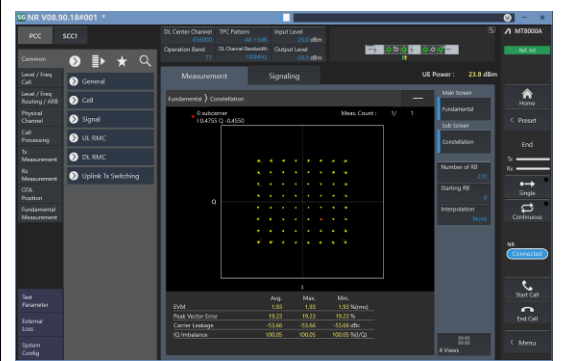
1-N77-3700-3980-PC2-30-100-M-1-DFT-PI2
BPSK-Outer_Full-270@0-Ant1-see graph-PASS



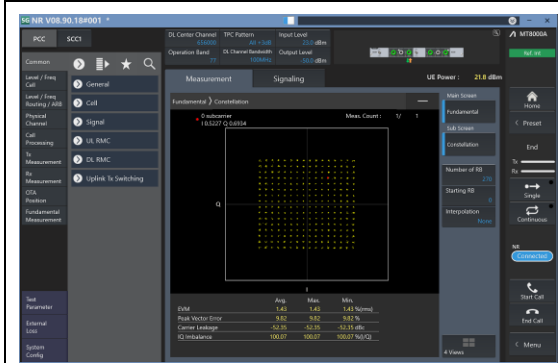
1-N77-3700-3980-PC2-30-100-M-2-DFT-QP
SK-Outer_Full-270@0-Ant1-see graph-PASS



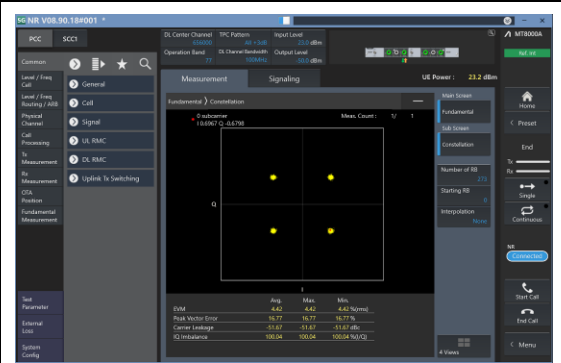
1-N77-3700-3980-PC2-30-100-M-3-DFT-16Q
AM-Outer_Full-270@0-Ant1-see graph-PASS



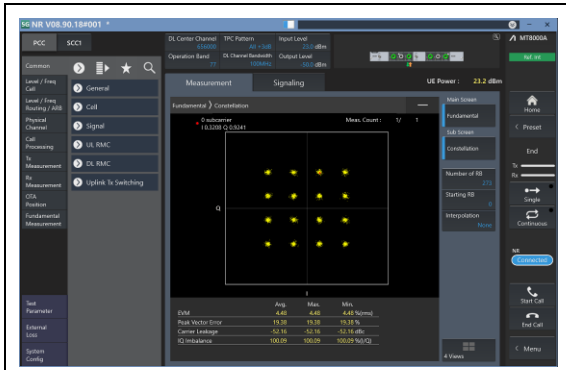
1-N77-3700-3980-PC2-30-100-M-4-DFT-64Q
AM-Outer_Full-270@0-Ant1-see graph-PASS



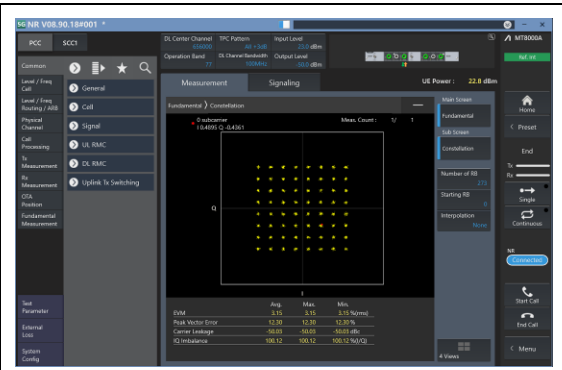
1-N77-3700-3980-PC2-30-100-M-5-DFT-256
QAM-Outer_Full-270@0-Ant1-see graph-PASS



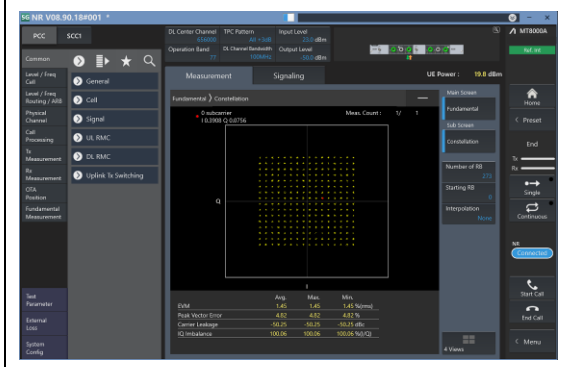
1-N77-3700-3980-PC2-30-100-M-6-CP-QPS
K-Outer_Full-273@0-Ant1-see graph-PASS



1-N77-3700-3980-PC2-30-100-M-7-CP-16Q
AM-Outer_Full-273@0-Ant1-see graph-PASS



1-N77-3700-3980-PC2-30-100-M-8-CP-64Q
AM-Outer_Full-273@0-Ant1-see graph-PASS



1-N77-3700-3980-PC2-30-100-M-9-CP-256Q
AM-Outer_Full-273@0-Ant1-see graph-PASS

