



User manual v1.0

1

Product Introduction



Features

SONOFF smart device (Zigbee version) with Zigbee wireless communication protocol that allows you to remotely turn on, schedule on/off and set smart scenes to trigger other devices, etc. by connecting Zigbee hub.



Remote Control



Single/Countdown Timing



Voice Control



Share Control



Smart Scene

2

Pair with Amazon Echo

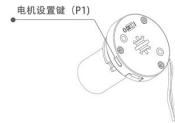
1. Download the latest Amazon Alexa App and pair your phone with Amazon Echo with built-in Zigbee hub

2. This device directly works with the following 5 Amazon Echo

Echo 4th Gen
Echo Plus (2.Gen.)
Echo Studio
Echo Show(2.Gen.)
Echo Show 10 (3rd Gen)

3

3. 长按按键超过6秒；此过程中转动提示了二次后，松开时蜂鸣器鸣叫2声；表示电机进入配网模式；LED灯闪60秒用于在配网状态。



4. Ask the Alexa Echo to discover the devices automatically by saying "Alexa, discover my devices".

5. 如果配网失败，重复步骤2和3.

4

Pair with eWeLink App

1. Pair ZBBridge-01 to your eWeLink account 配置指引 参考网关ZBBridge-01的说明书。

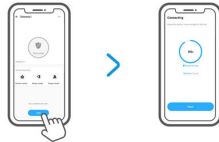
2. 长按按键超过6秒；此过程中转动提示了二次后，松开时蜂鸣器鸣叫2声；表示电机进入配网模式；LED灯闪60秒用于在配网状态。



① The device will exit the pairing mode if you do not operate it within 1 minutes.

5

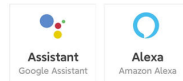
4. Add iPlug to the ZB Bridge



6

按照APP的指引，将eWeLink添加到Alexa和Google Assistant中。

安装路径：eWeLink APP - Profile - Support， 分别选择Google Assistant和Amazon Alexa， 将电机设备添加到谷歌和亚马逊音箱后就可以使用了。



支持的语种：

Alexa:

打开：open the 【设备名称】，set the 【设备名称】 to open

关闭：close the 【设备名称】，set the 【设备名称】 to close

暂停：set the 【设备名称】 to pause

范围调节：set the 【设备名称】 to 【数字】 percent. open the 【设备名称】 to 50%

关闭：turn on the <instance> (Blind switch) on the <device name>

关闭：turn off the <instance> (Blind switch) on the <device name>

谷歌:

open 【设备名称】 : 全开

open 【设备名称】 curtains: 全开.

close 【设备名称】 : 全关

close 【设备名称】 curtains: 全关

stop the 【设备名称】 : 暂停

stop the 【设备名称】 curtains: 暂停 (不好识别)

pause the 【设备名称】 : 暂停

open 【设备名称】 to 50 percent : 开到 50%

open 【设备名称】 curtains to 50 percent : 开到 50%

7

FCC Warning

Changes or modifications not expressly approved by the party responsible for compliance could void the user's authority to operate the equipment.

This device complies with part 15 of the FCC Rules. Operation is subject to the following two conditions: (1) This device may not cause harmful interference, and (2) this device must accept any interference received, including interference that may cause undesired operation.

FCC Radiation Exposure Statement:

This equipment complies with FCC radiation exposure limits set forth for an uncontrolled environment. This transmitter must not be co-located or operating in conjunction with any other antenna or transmitter.

Note:

This equipment has been tested and found to comply with the limits for a Class B digital device, pursuant to part 15 of the FCC Rules. These limits are designed to provide reasonable protection against harmful interference in a residential installation. This equipment generates, uses and can radiate radio frequency energy and, if not installed and used in accordance with the instructions, may cause harmful interference to radio communications. However, there is no guarantee that interference will not occur in a particular installation. If this equipment does cause harmful interference to radio or television reception, which can be determined by turning the equipment off and on, the user is encouraged to try to correct the interference by one or more of the following measures:

- Reorient or relocate the receiving antenna.
- Increase the separation between the equipment and receiver.
- Connect the equipment into an outlet on a circuit different from that to which the receiver is connected.
- Consult the dealer or an experienced radio/TV technician for help.

This equipment complies with FCC radiation exposure limits set forth for an uncontrolled environment. This equipment should be installed and operated with minimum distance 20cm

8