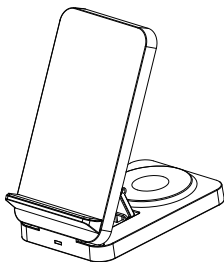


# Wireless Charging

User Manual



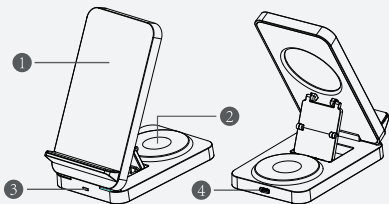
Thank you for purchasing DEBARK 3 in 1 wireless charging station. For the best using experience, please read this user manual carefully before use and keep it for further reference.

**Contact us:**

If you have any question or problems, please feel free to contact us we will offer prompt and authoritative reply within 24 hours.

**Email: [VANBAR-Service@outlook.com](mailto:VANBAR-Service@outlook.com)**

## Product Overview



- 1.Mobile Phone Charging Area
- 2.Earphone/Watch Charging Area
- 3. Charging indicator light
- 4.Type-C Input Specifications

Input:DC 9V-2A,DC 12-2A

Output:Max 15W

## Using Instructions:

1.Connect the power supply.

2.Put your devices on the wireless charging area.

3.When the mobile phone is charging,the LED indicator light shows solid green;When the Earphone/Watch is charging,the LED indicator light shows solid blue; When the Earphone/Watch and the mobile phone are charging at the same time,the LED indicator light shows Sky blue.

4.When the green light of mobile phone charging blinks or the blue light of earphone charging blinks, it indicates that the position is out of alignment or there is a problem and needs to be repositioned

## Package Contents:



1\*Wireless  
Charging Stand



1\*Charging Cable



1\*Charging head



1\*User Manual"

Tips: USB or 5V-1A/5V-2A/5V-3A adapter is not supported!

# Wireless Charging Guide



## Choosing The Right Charger

I have a Quick Charge Label.

My output power is 9V-2A/12V-2A



Suitable Charger



Unsuitable Charger

I am an Apple 5V/1A adapter.

I only have 5V output.

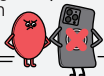
\*or You Can Search And Buy A Qc3.0 Charger On Amazon;

Make sure the phone or the device to be charged supports wireless charging function.

With Wireless Charging Function



No Wireless Charging Function



Choose the right charging position

Aligned



Offset



Choose the right phone case

Thin (Phone Case  $\leq 5\text{mm}$ )



Thick (Phone Case  $> 5\text{mm}$ )



This device complies with Part 15 of the FCC Rules. Operation is subject to the following two conditions: (1) this device may not cause harmful interference, and (2) this device must accept any interference received, including interference that may cause undesired operation

NOTE: This equipment has been tested and found to comply with the limits for a Class B digital device, pursuant to Part 15 of the FCC Rules. These limits are designed to provide reasonable protection against harmful interference in a residential installation. This equipment generates, uses and can radiate radio frequency energy and, if not installed and used in accordance with the instructions, may cause harmful interference to radio communications. However, there is no guarantee that interference will not occur in a particular installation.

If this equipment does cause harmful interference to radio or television reception, which can be determined by turning the equipment off and on, the user is encouraged to try to correct the interference by one or more of the following measures:

- Reorient or relocate the receiving antenna.
- Increase the separation between the equipment and receiver.
- Connect the equipment into an outlet on a circuit different from that to which the receiver is connected.
- Consult the dealer or an experienced radio/TV technician for help.

Warning: changes or modifications not expressly approved by the party responsible for compliance could void the user's authority to operate the equipment

#### Radiation Exposure Statement

This equipment complies with FCC radiation exposure limits set forth for an uncontrolled environment.

This equipment should be installed and operated with minimum distance 20cm between the radiator and your body.