

## 1. Features

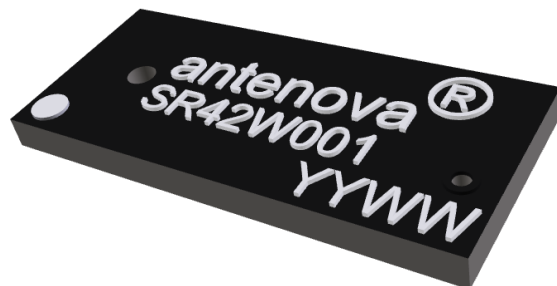
- Antenna for 2.4 – 2.5 GHz and 4.9 – 5.9 GHz applications: Wi-Fi<sup>®</sup> 802.11a/b/g/j/n/ac
- Maintains high performance on device: DFI (Designed For Integration)
- Ultra-compact
- SMD mounting
- Supplied on Tape and Reel

## 2. Description

Mutica is intended for use with all dual-band Wi-Fi applications. Only requires a small ground plane and integrates into the corner with minimal PCB clearance area. Design centred on being part of the device and not designing the device around the antenna (DFI - Designed for Integration). Ideal for single and MIMO antenna systems.

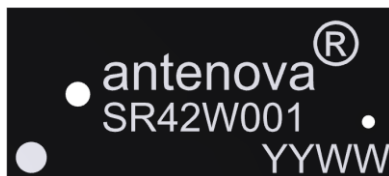
## 3. Applications

- Access Points
- Portable Devices
- Headsets
- PC-cards
- Game Consoles
- Set-Top-Box
- Network Devices
- Wearable devices
- MIMO Systems



## 4. Part Number

**Mutica: SR42W001**



## 5. General Data

Product name	Mutica dual band Wi-Fi antenna
Part Number	SR42W001
Frequency	2.4-2.5GHz;4.9-6.0GHz
Polarization	Linear
Operating temperature	-40°C to140°C
Environmental condition test	ISO16750-4 5.1.1.1/5.1.2.1/5.3.2
Impedance with matching	50 $\Omega$
Weight	< 0.5 g
Antenna type	SMD
Dimensions	11.3 x 5.0 x 0.8 (mm)

## 6. RF Characteristics

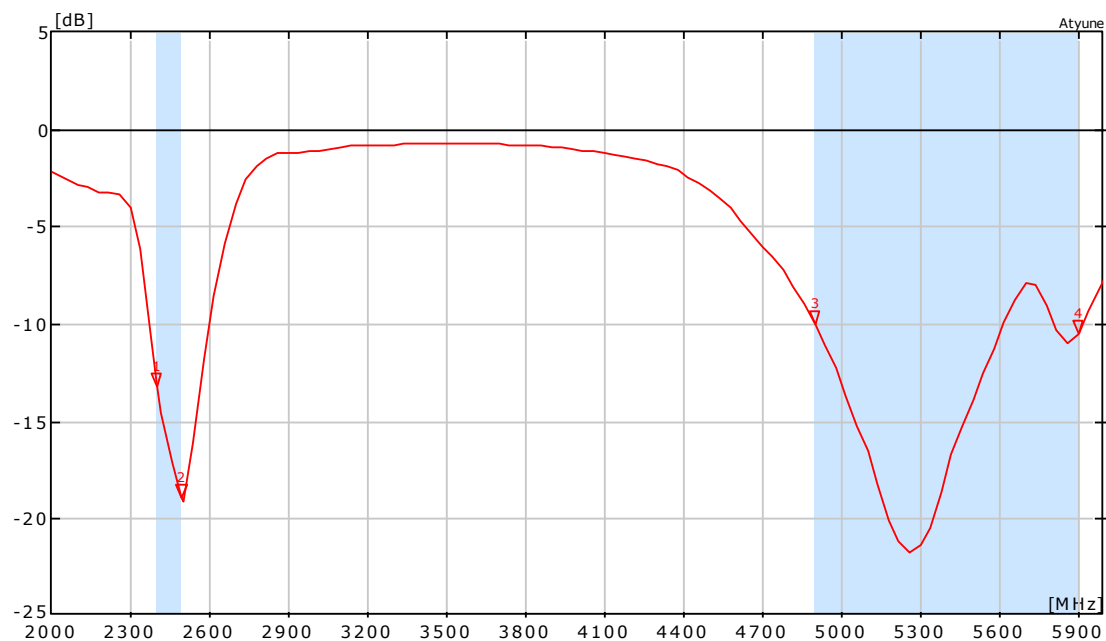
	Typical performance	Conditions
Peak gain	2.0dBi	<b>2.4 – 2.5 GHz frequency range</b> All data measured on Antenova's evaluation PCB Part No. SR42W001-U1
Average gain	-0.5dBi	
Average efficiency	>75%	
Maximum return loss	-12dB	
Maximum VSWR	1.5:1	

	Typical performance	Conditions
Peak gain	3.0dBi	<b>4.9 – 5.9 GHz frequency range</b> All data measured on Antenova's evaluation PCB Part No. SR42W001-U1
Average gain	-2.5dBi	
Average efficiency	>65%	
Maximum return loss	-6.0dB	
Maximum VSWR	2.70:1	

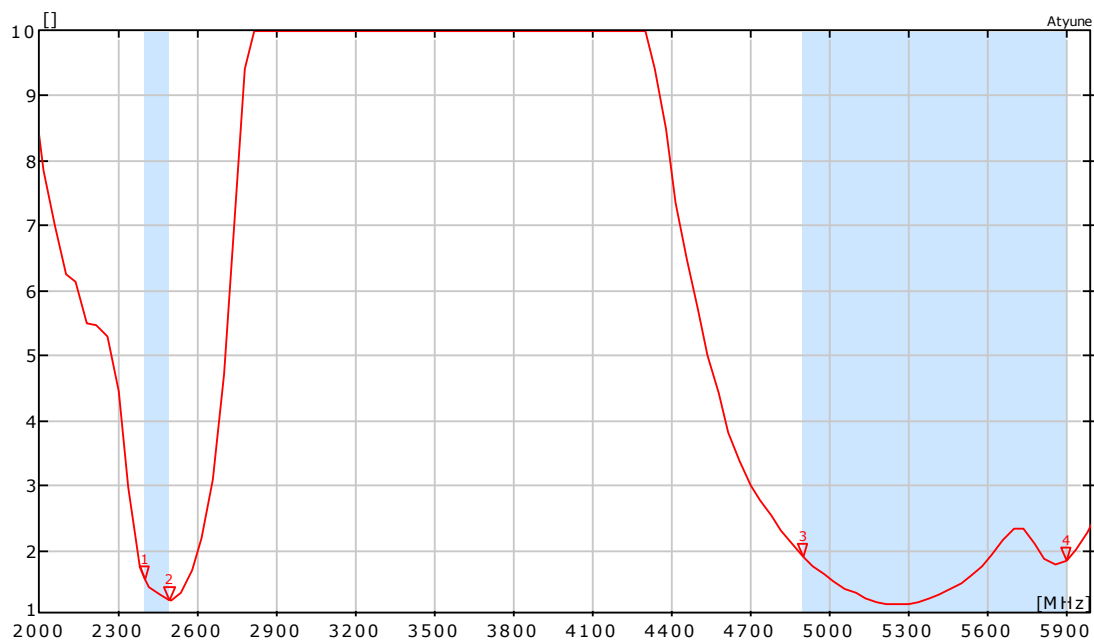
Antennas for Wireless Applications

## 7. RF Performance

### 7.1 Return Loss



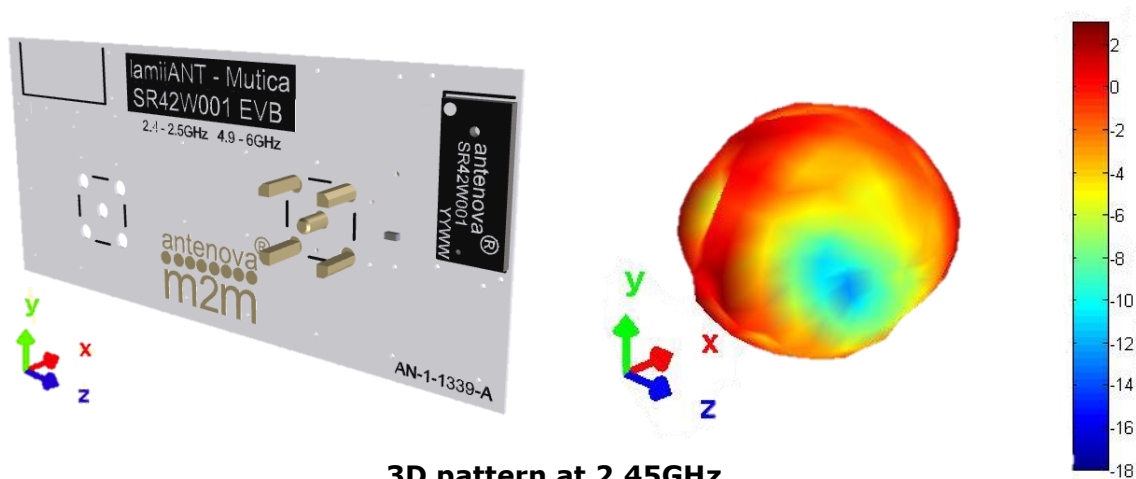
### 7.2 VSWR



Antennas for Wireless Applications

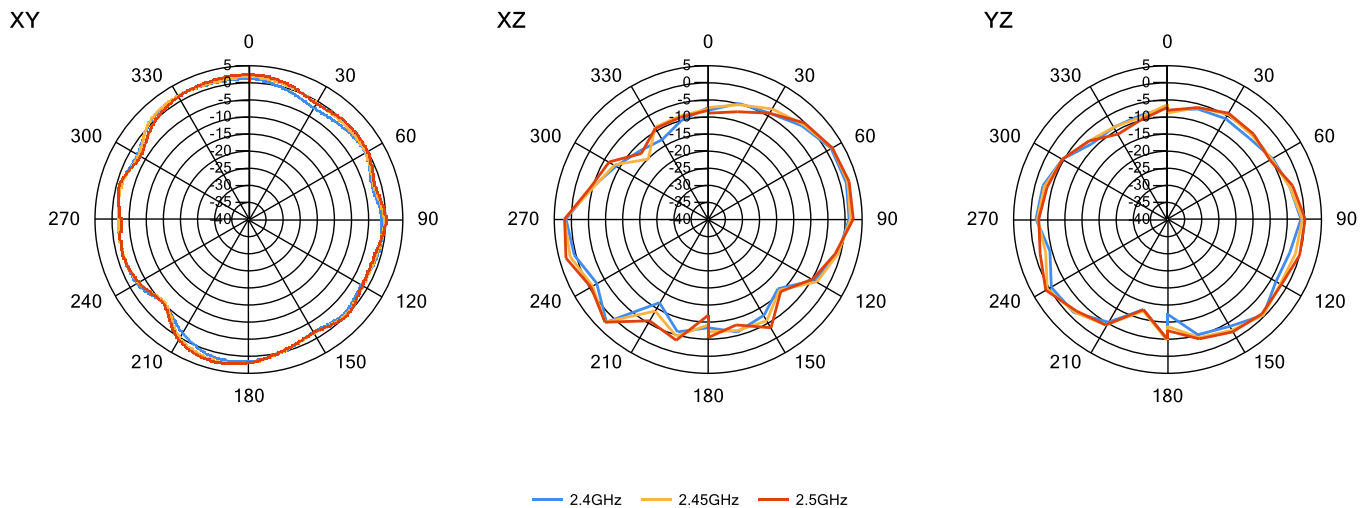
## 7.3 Antenna patterns

### 7.3.1 2400 MHz – 2500 MHz

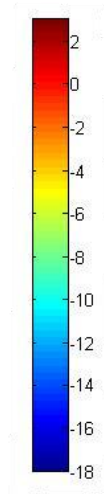
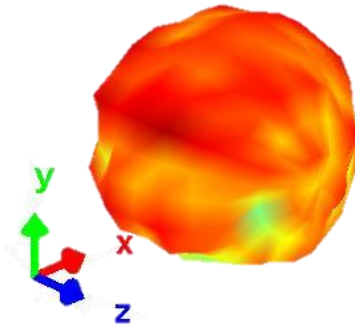
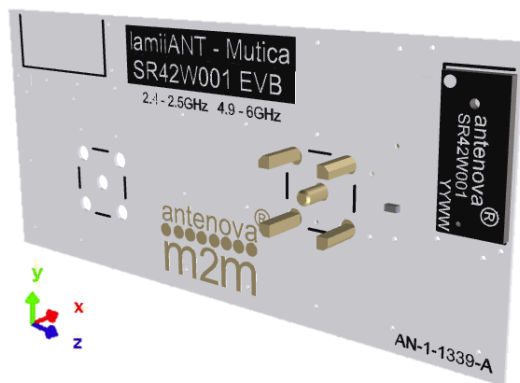


**3D pattern at 2.45GHz**

*Drag to rotate pattern and PCB by using Adobe Reader  
(Click to Activate)*



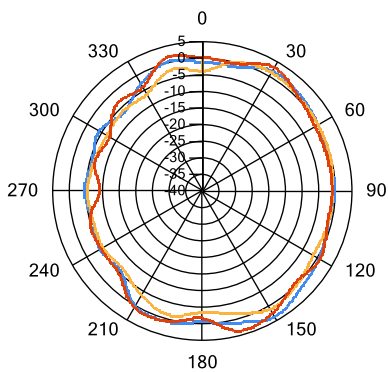
## 7.3.2 4900 MHz – 5900 MHz



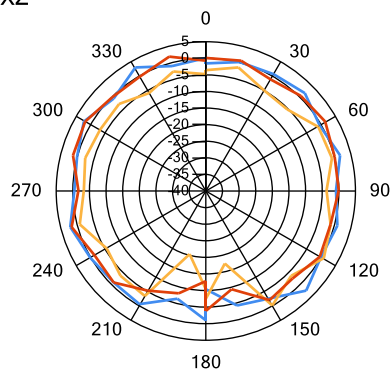
### 3D pattern at 5.45GHz

Drag to rotate pattern and PCB by using Adobe Reader  
(Click to Activate)

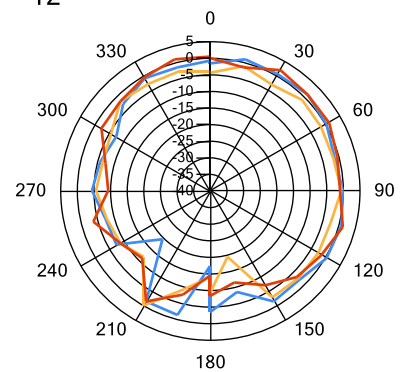
XY



XZ

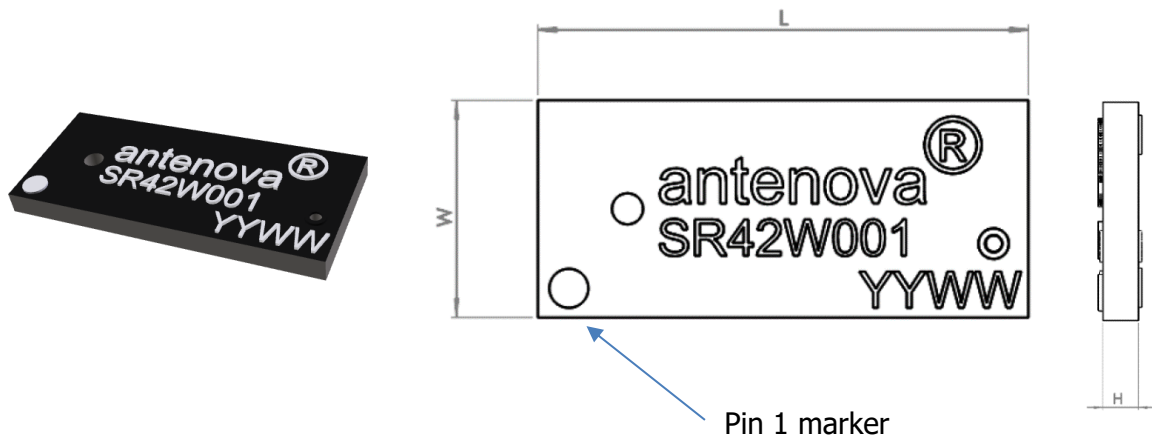


YZ



— 4.9GHz — 5.45GHz — 5.95GHz

## 8. Antenna Dimensions

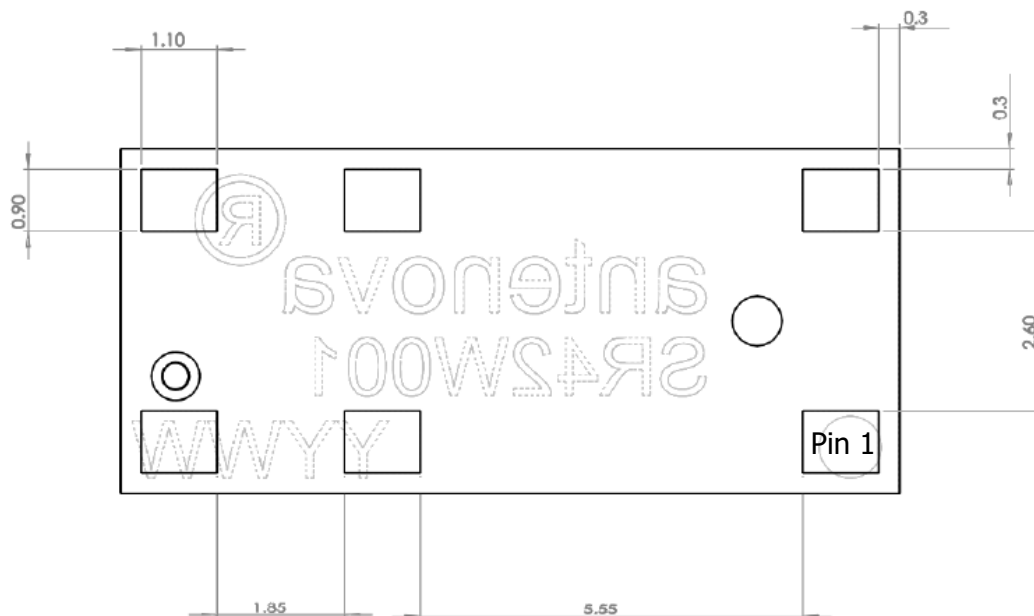


L	W	H
Length	Width	Height
11.3 ±0.1	5.0 ±0.1	0.9 +0.1 -0.2

All dimensions in mm

### Bottom side dimensions

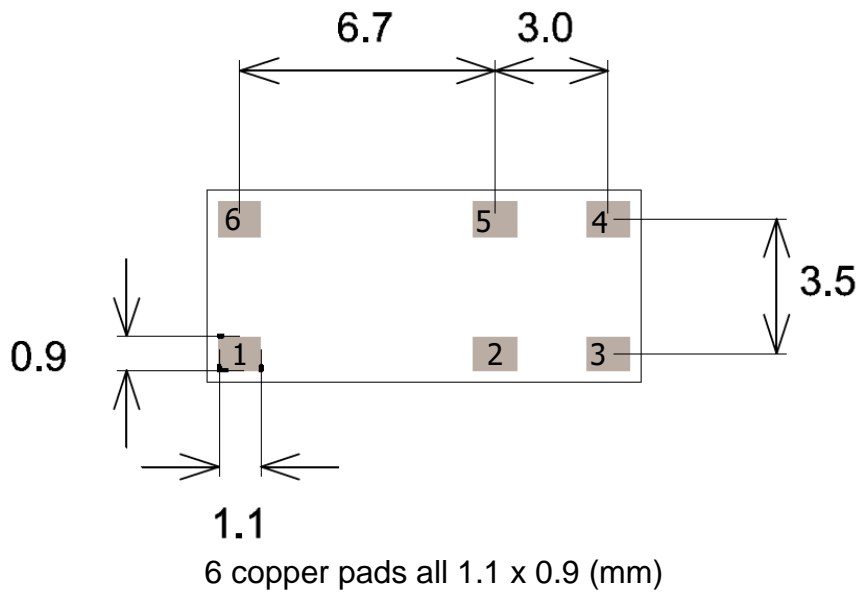
6 solder pads (1.1 x 0.9 mm)



Antennas for Wireless Applications

## 9. Antenna footprint

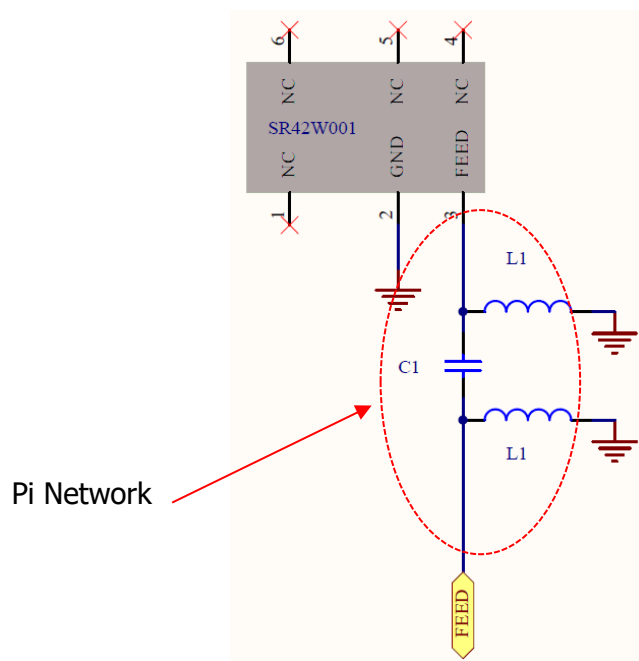
The recommended host PCB footprint is below.



\*CAD files of the antenna footprint are available at [www.antenova-com](http://www.antenova-com).

## 10. Schematic

The circuit for the antenna and the matching components is below. The RF feed connection and GND connections are critical to the function of the antenna, and must be followed as shown. This circuit can be used for the circuit capture of the host PCB.



## 11. Electrical Interface

### 11.1 Transmission Line

All transmission lines should be designed to have a characteristic impedance of 50Ω.

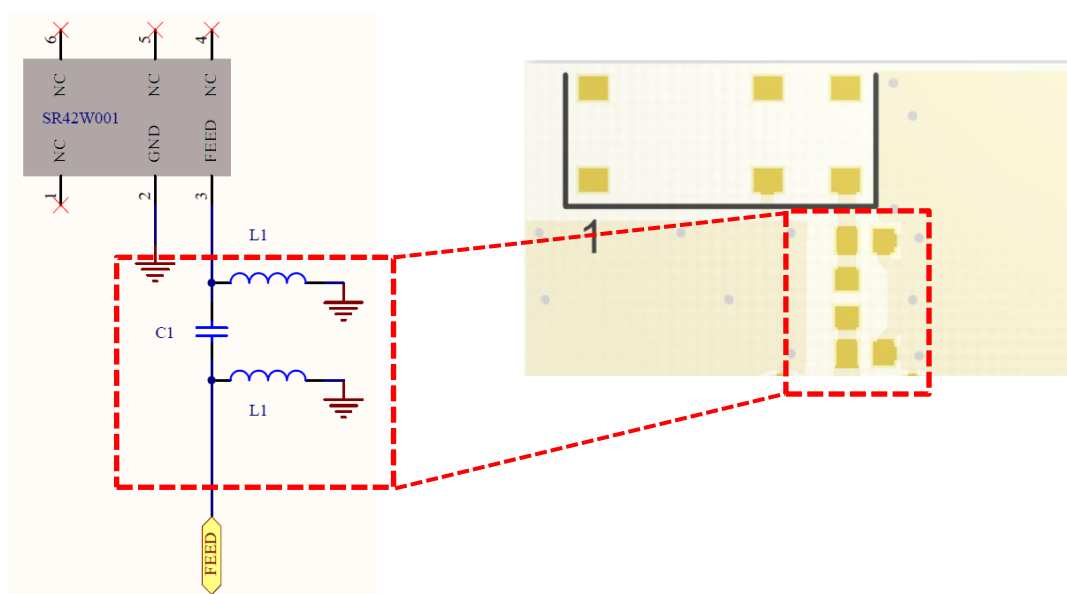
- The length of the transmission lines should be kept to a minimum
- Any other parts of the RF system like transceivers, power amplifiers, etc, should also be designed to have an impedance of 50 Ω

Once the material for the PCB has been chosen (PCB thickness and dielectric constant), a coplanar transmission line can easily be designed using any of the commercial software packages for transmission line design. For the chosen PCB thickness, copper thickness and substrate dielectric constant, the program will calculate the appropriate transmission line width and gaps on either side of the track so the characteristic impedance of the co-planar transmission line is 50 Ω.

### 11.2 Matching Circuit

The antenna requires a matching circuit that must be optimized for each product. The matching circuit will require up to three components and the following pad layout should be designed into the device so the correct circuit can be installed.

The Pi matching network must be placed close to the antenna feed to ensure it is more effective in tuning the antenna.

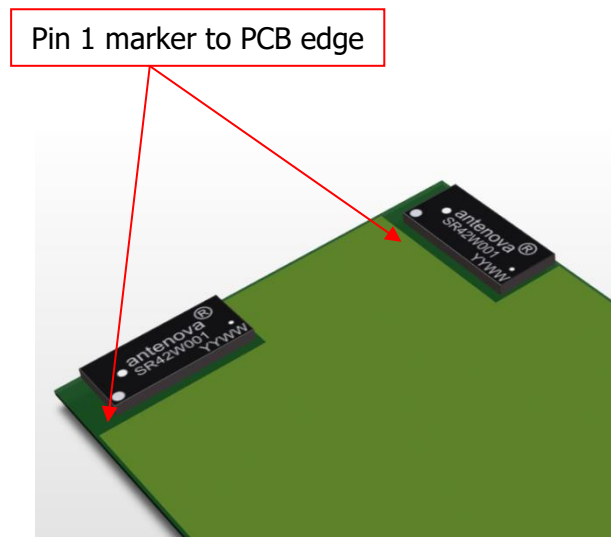


## Antennas for Wireless Applications

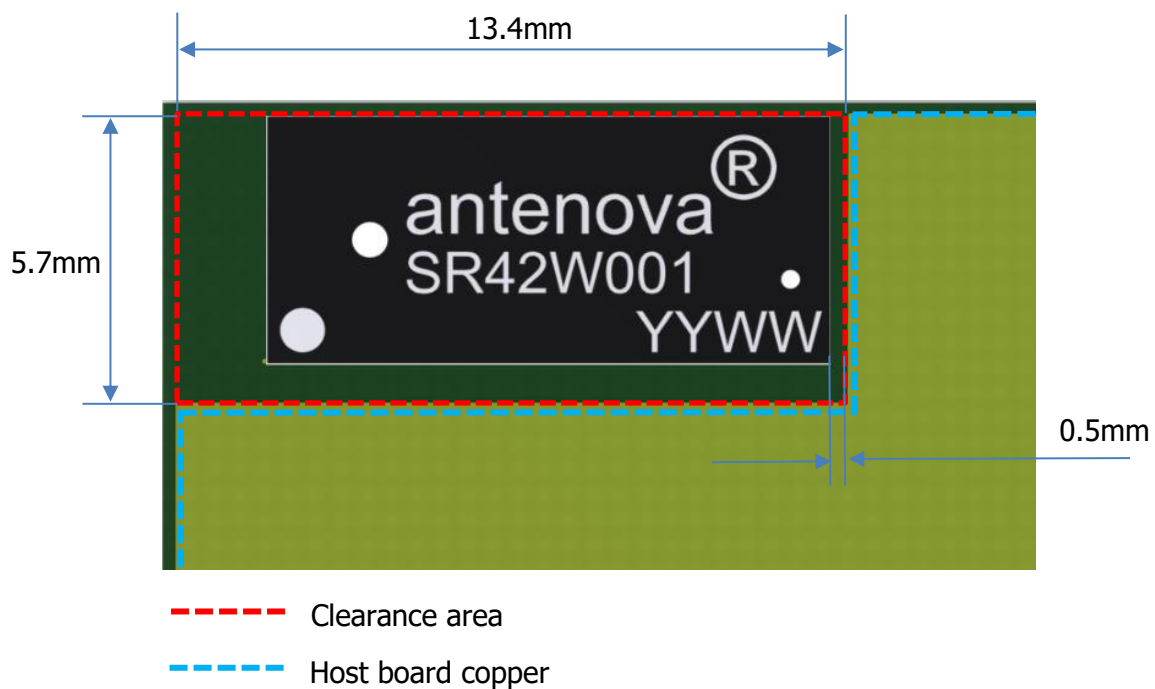
## 12. Antenna Integration Guide

### 12.1 Antenna Placement

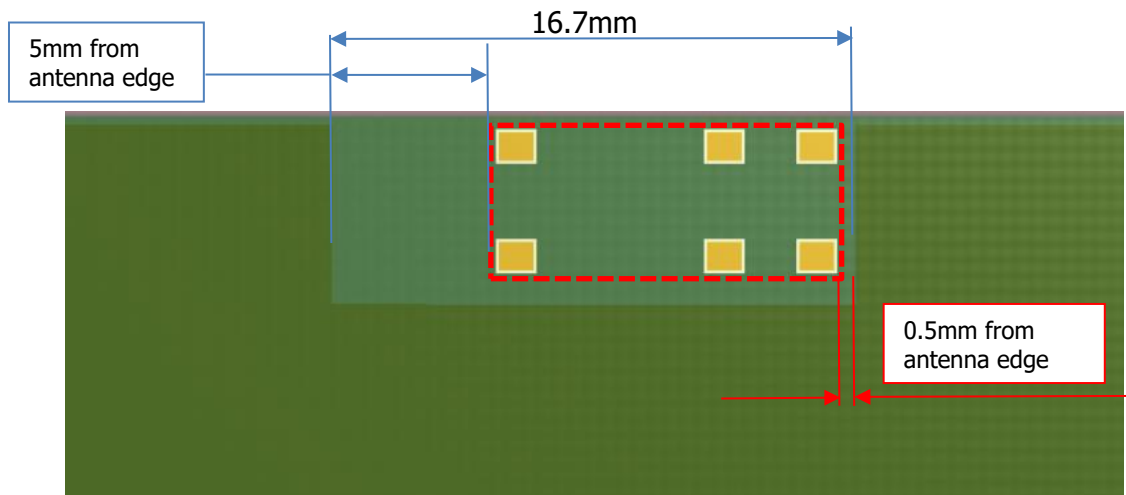
Whichever the host PCB size used, the antenna should be placed into the PCB corner. Ideally Pin 1 should be closest to the PCB edge.



The antenna requires a copper clearance on all PCB layers under the antenna section. The clear-out area is defined below. The clearance is minimal but must be followed for the antenna to function correctly.



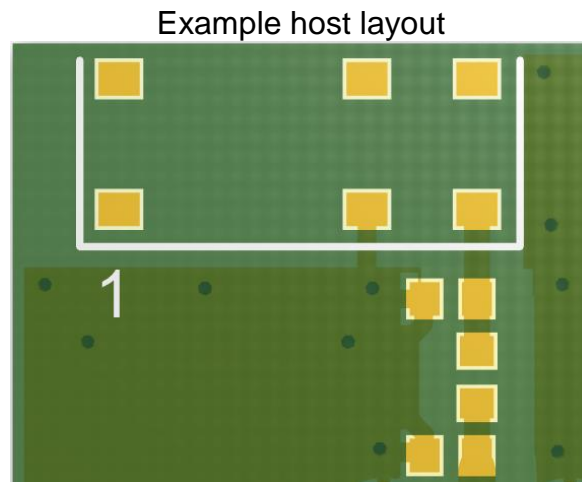
For locations that are not on the corner the following clearances are required from each side of the antenna to GND.



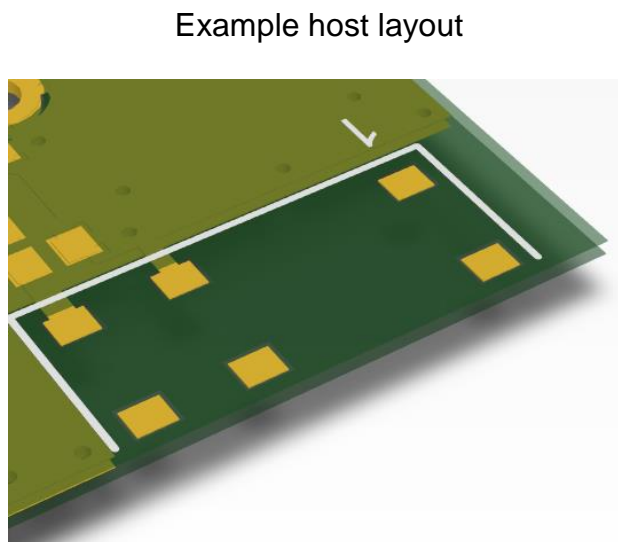
*Centre PCB placement example*

## 12.2 Host PCB Layout

The host PCB must ensure the footprint and clearance meets the antenna specification. An example of the PCB layout shows the antenna footprint with clearance. The antenna uses solder mask defined pads. Pin 2(GND) is shown directly connecting to the GND in the shortest route. The feed connects to the matching circuit close to the antenna.

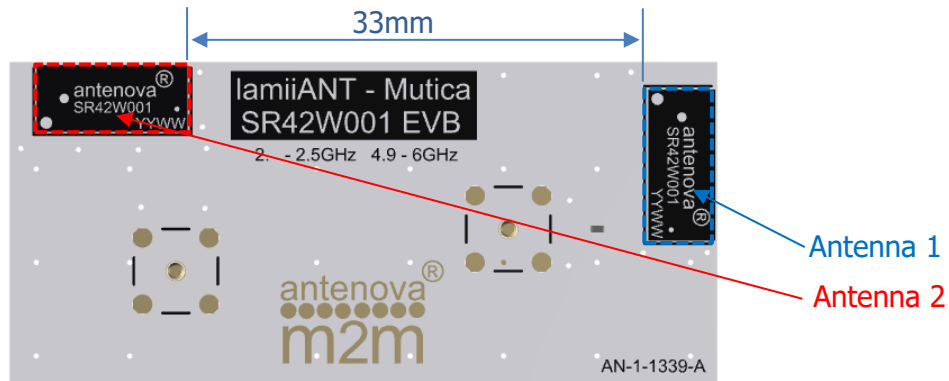


Below shows the antenna footprint and clearance through all layers on the PCB. Only the antenna pads and connections to feed and GND are present within the antenna area

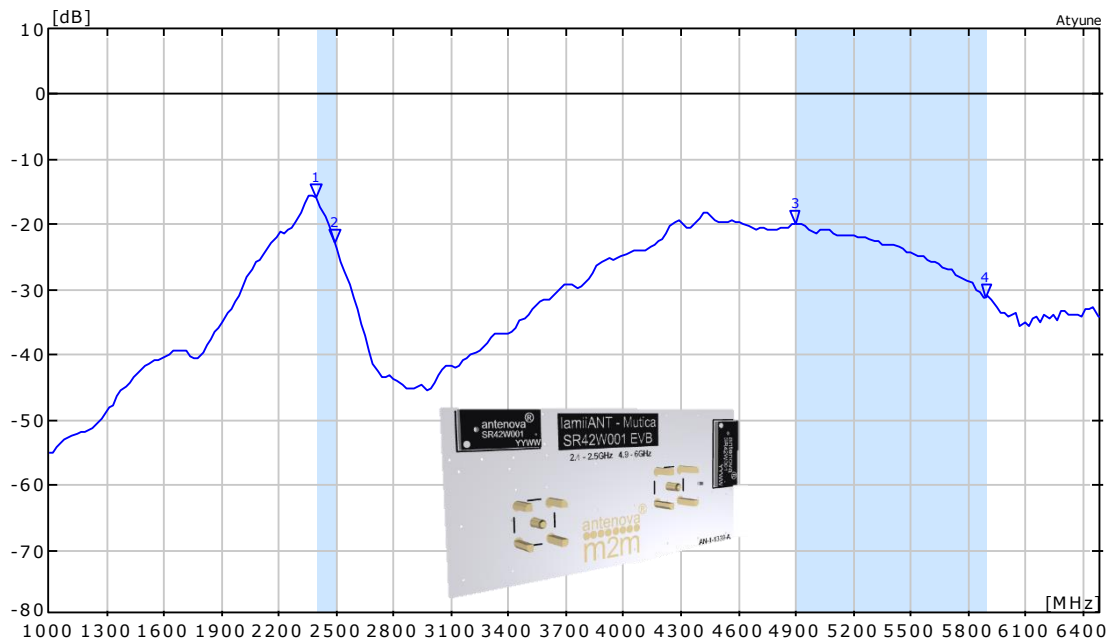


### 13. MIMO Application example.

Mutica works well in multiple antenna systems with simple integration to ensure good isolation between antennas. Below is an example of a 2 X MIMO system.



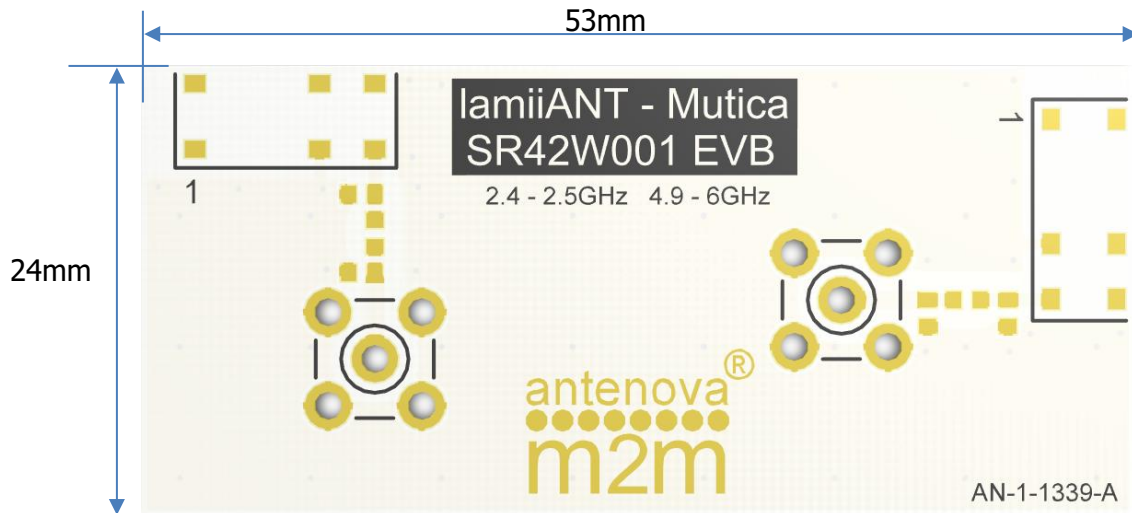
Two antennas placed perpendicular to each other. Both antennas were optimised and matched for the same bands using the Antenova evaluation PCB. An S21 measurement between these antennas shows good isolation of <15dB minimum.



## 14. Reference Board

The reference board has been designed for evaluation purposes of SR42W001 includes a SMA female connector.

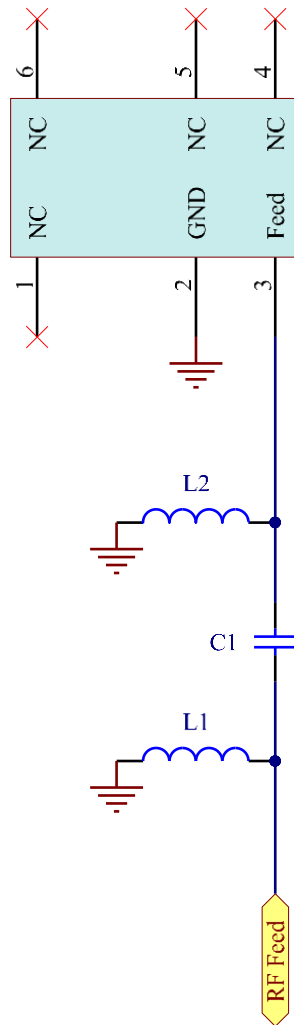
SRCW004 Evaluation Board



To order a reference board please see [www.antenna.com](http://www.antenna.com)

## 14.1 Reference Board Matching Circuit

The reference board has been designed in order to evaluate the SR42W001 and is fitted with an SMA female connector.



Designator	Type	Value	Description
C1	Capacitor	1pF	Murata GJM15 series
L1	Inductor	15nH	Murata LQG15HN series
L2	Inductor	Not fitted	Not fitted

## 15. Soldering

This antenna is suitable for lead free soldering.

The reflow profile should be adjusted to suit the device, oven and solder paste, while observing the following conditions:

- The maximum temperature should not exceed 240 °C
- However for lead free soldering, a maximum temperature of 255 °C for no more than 20 seconds is permitted.
- The antenna should not be exposed to temperatures exceeding 120 °C more than 3 times during the soldering process.

## 16. Hazardous Material Regulation Conformance

The antenna has been tested to conform to RoHS requirements. A certificate of conformance is available from Antenova's website.

## 17. Packaging

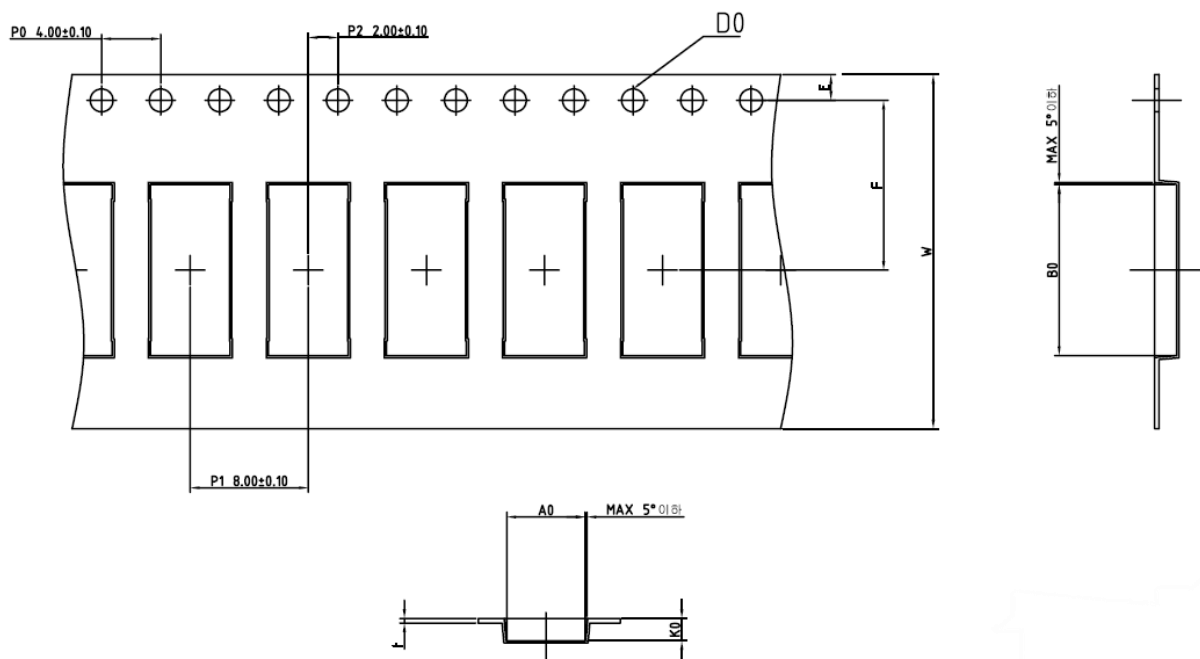
### 17.1 Optimal Storage Conditions

Temperature	-10°C to 40°C
Humidity	Less than 75% RH
Shelf life	24 Months
Storage place	Away from corrosive gas and direct sunlight
Packaging	Reels should be stored in unopened sealed manufacturer's plastic packaging.

**Note: Storage of open reels of antennas is not recommended due to possible oxidization of pads on antennas. If short term storage is necessary, then it is highly recommended that the bag containing the antenna reel is re-sealed and stored in like storage conditions as in above table.**

**The shelf life of the antenna is 2 years provided the factory seal on the package has not been broken.**

## 17.2 Tape Characteristics



Do	Ao	Bo	P0	P1	P2
1.55 +0.1	5.30 ± 0.1	11.605 ± 0.1	4.00 ± 0.1	8.00 ± 0.1	2.00 ± 0.1

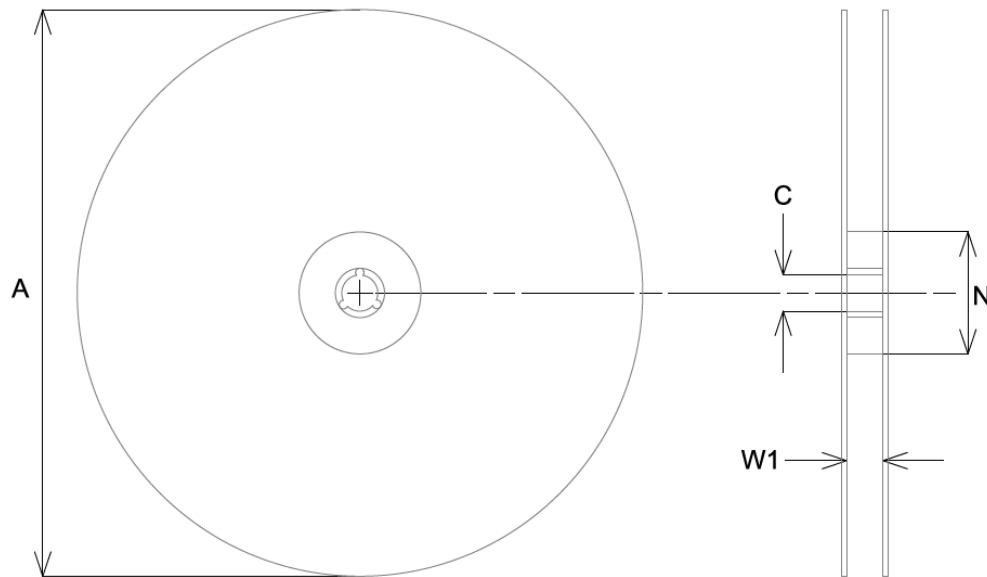
E	F	W	K0
1.75 ± 0.1	11.50 ± 0.1	24.00 ± 0.3	1.40 ± 0.1

Dimensions in mm

### Notes:

- Sprocket hole pitch cumulative tolerance =  $\pm 0.2$  per 10
- Chamber not to exceed 1mm in 100mm
- Ao and Bo measured on a plane 0.1mm above the bottom of the pocket.
- K0 measured from a plane on the inside bottom of the pocket to the top surface of the carrier.

## 17.3 Reel Dimensions



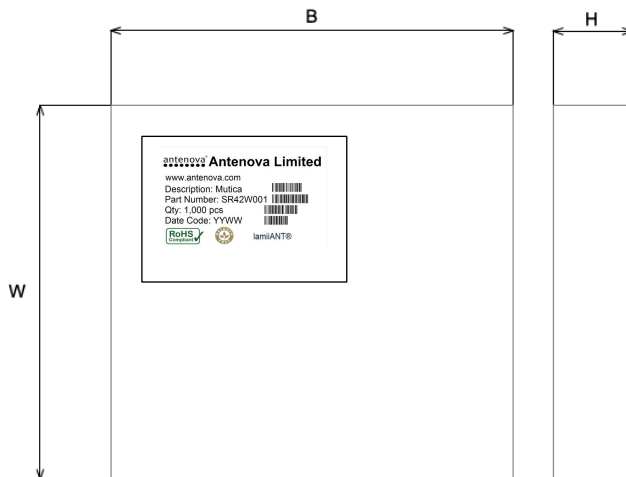
A	C	N	W1
178.0 ± 2.0	13.2 ± 0.5	60.0	14.0

All dimensions in mm

Quantity	Leading Space	Trailing Space
1000 pcs / reel	16 blank holders	24 blank holders

Antennas for Wireless Applications

## 17.4 Box Dimensions



Width (W)	Breadth (B)	Thickness (H)
203mm	188mm	40mm

## 17.5 Bag Properties

Reels are supplied in protective plastic packaging.

## 17.6 Reel Label Information



## Quality statements

Antenova's products conform to REACH and RoHS legislation. For our statements regarding these and other quality standards, please see **[www.antenova.com](http://www.antenova.com)**.



## Antenna design, integration and test resources

Product designers – the details contained in this datasheet will help you to complete your embedded antenna design. Please follow our technical advice carefully to obtain optimum antenna performance.

It is our goal that every customer will create a high performing wireless product using Antenova's antennas. You will find a wealth of design resources, calculators and case studies to aid your design at our website.

Antenova's design laboratories are equipped with the latest antenna design tools and test chambers. We provide antenna design, test and technical integration services to help you complete your design and obtain certifications.

If you cannot find the antenna you require in our product range, please contact us to discuss creating a bespoke antenna to meet your requirement exactly.

## Contacts

Join our online antenna design community: **[ask.antenova.com](http://ask.antenova.com)**

Order antenna samples and evaluation boards at: **[www.antenova.com](http://www.antenova.com)**

Request a quotation for antennas by volume: **[sales@antenova.com](mailto:sales@antenova.com)**

Global Headquarters:

**Antenova Ltd, 2<sup>nd</sup> Floor Titan Court, 3 Bishop Square,  
Hatfield, AL10 9NA +44 (0) 1223 810600**

**Copyright® Antenova Ltd.** All Rights Reserved. Antenova®, gigaNOVA®, RADIONOVA®, the Antenova product family names and the Antenova logos are trademarks and/or registered trademarks of Antenova Ltd. Any other names and/or trademarks belong to their respective companies. The materials provided herein are believed to be reliable and correct at the time of printing. Antenova does not warrant the accuracy or completeness of the information, text, graphics or other items contained within this information. Antenova further assumes no responsibility for the use of this information, and all such information shall be entirely at the user's risk.

# Antennas for Wireless Applications

# Mouser Electronics

Authorized Distributor

Click to View Pricing, Inventory, Delivery & Lifecycle Information:

[Antenova:](#)

[SR42W001](#) [SR42W001-EVB-1](#)