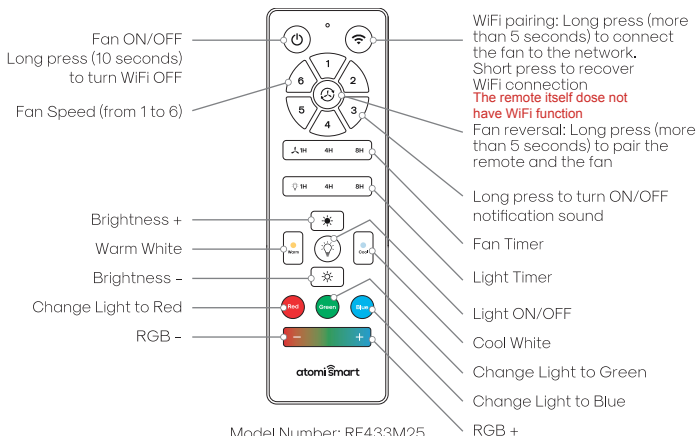


Remote Control

Note: Requires 2 AAA batteries (not included).

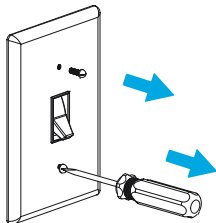


Attaching to an existing light switch

Note: This is only compatible with toggle switches.

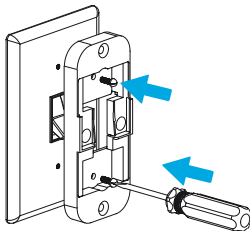
①

Remove the screws from your light switch cover (Do not remove the cover).



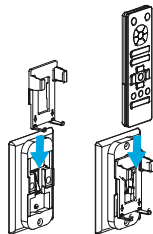
②

Place the remote control mount over the cover and attach it with the cover's screws.



③

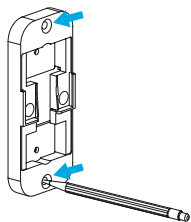
Slide the remote control holder in place, then insert the controller.



Mounting it to the wall

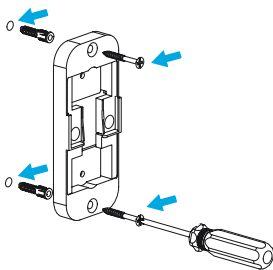
①

Use a pencil to mark the holes on the wall and check for alignment, then drill the holes.



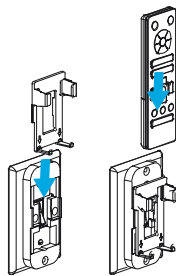
②

Use a screwdriver to screw in the anchors and screws in each hole.



③

Slide the remote control holder in place, then insert the controller.



Alternatively, you can use the 3M sticker to fix the bracket on the wall.

FCC Notice:

This device complies with Part 15 of the FCC Rules. Operation is subject to the two following conditions:

1. This device may not cause harmful interference.
2. This device must accept any interference received, including interference that may cause undesired operation.

Changes or modifications not expressly approved by the party responsible for compliance could void user's authority to operate the equipment.

Note:

This equipment has been tested and found to comply with the limits for a Class B digital device, pursuant to part 15 of the FCC Rules. These limits are designed to provide reasonable protection against harmful interference in a residential installation. This equipment generates, uses and can radiate radio frequency energy and, if not installed and used in accordance with the instructions, may cause harmful interference to radio communications. However, there is no guarantee that interference will not occur in a particular installation. If this equipment does cause harmful interference to radio or television reception, which can be determined by turning the equipment off and on, the user is encouraged to try to correct the interference by one or more of the following measures:

- Reorient or relocate the receiving antenna.
- Increase the separation between the equipment and receiver.
- Connect the equipment into an outlet on a circuit different from that to which the receiver is connected.
- Consult the dealer or an experienced radio/TV technician for help.