

J77966-004

TE LGA4199
22113N

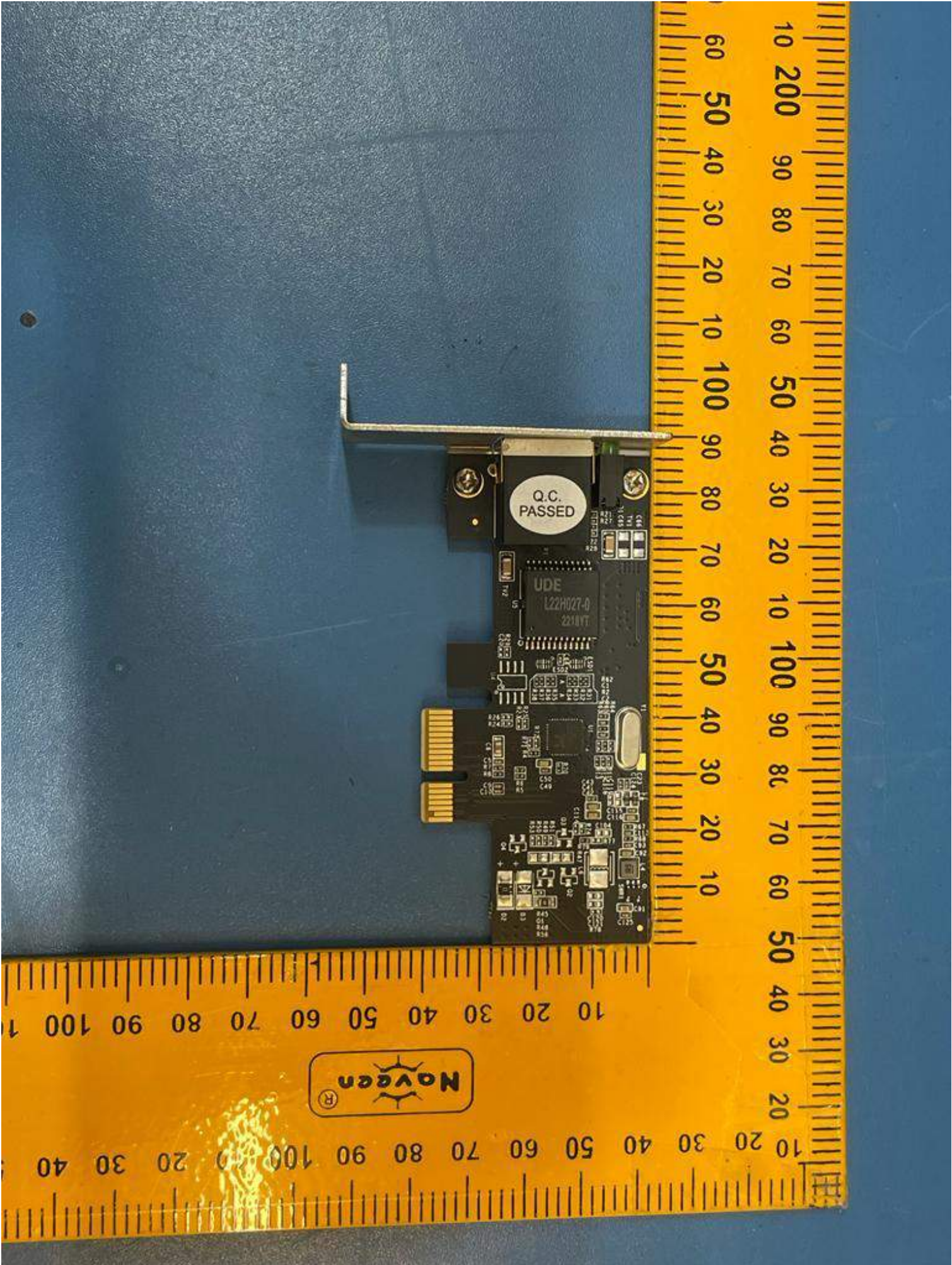
J77966-004

TE LGA4199
22113N

Navgen®

MA

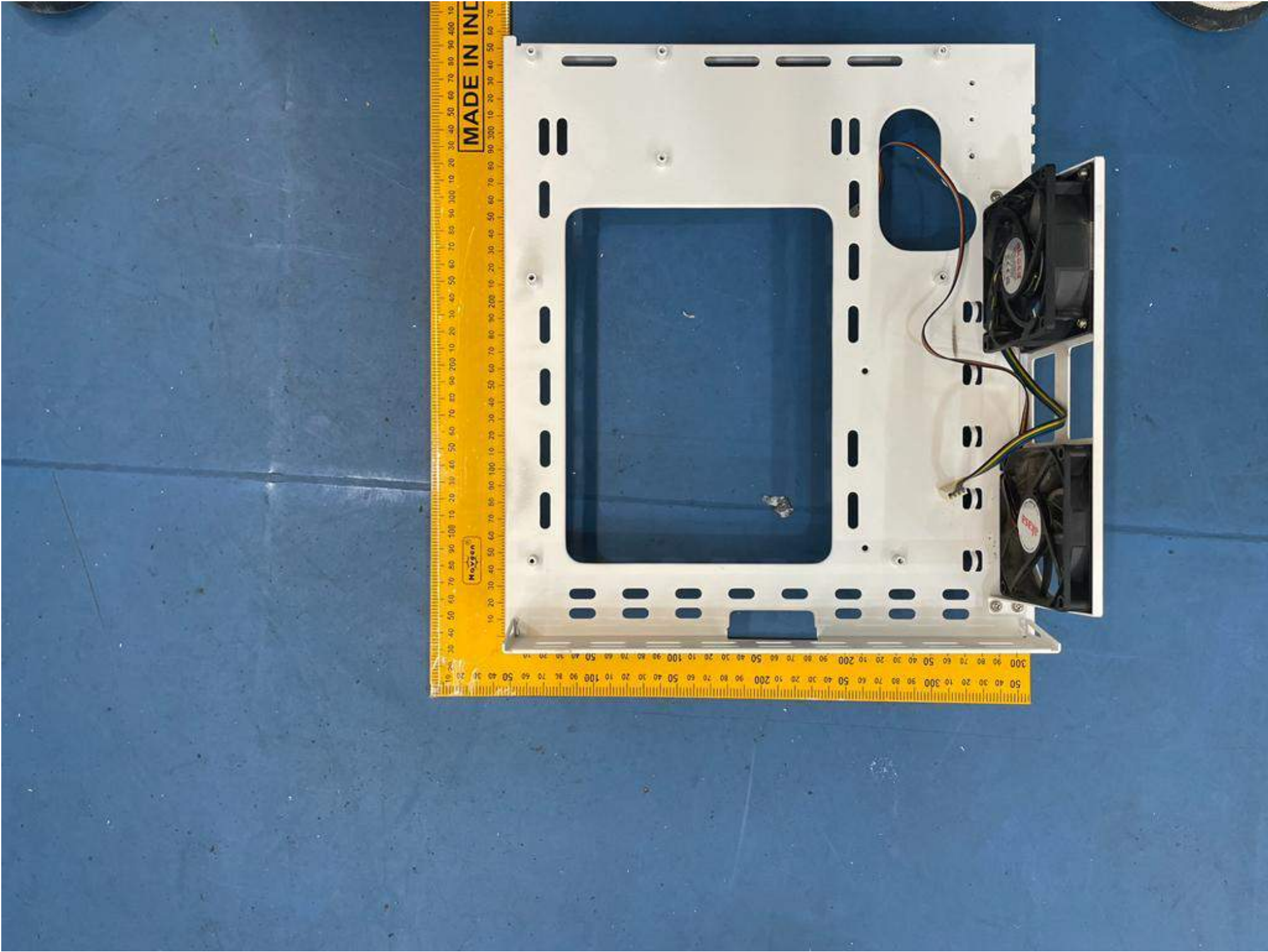




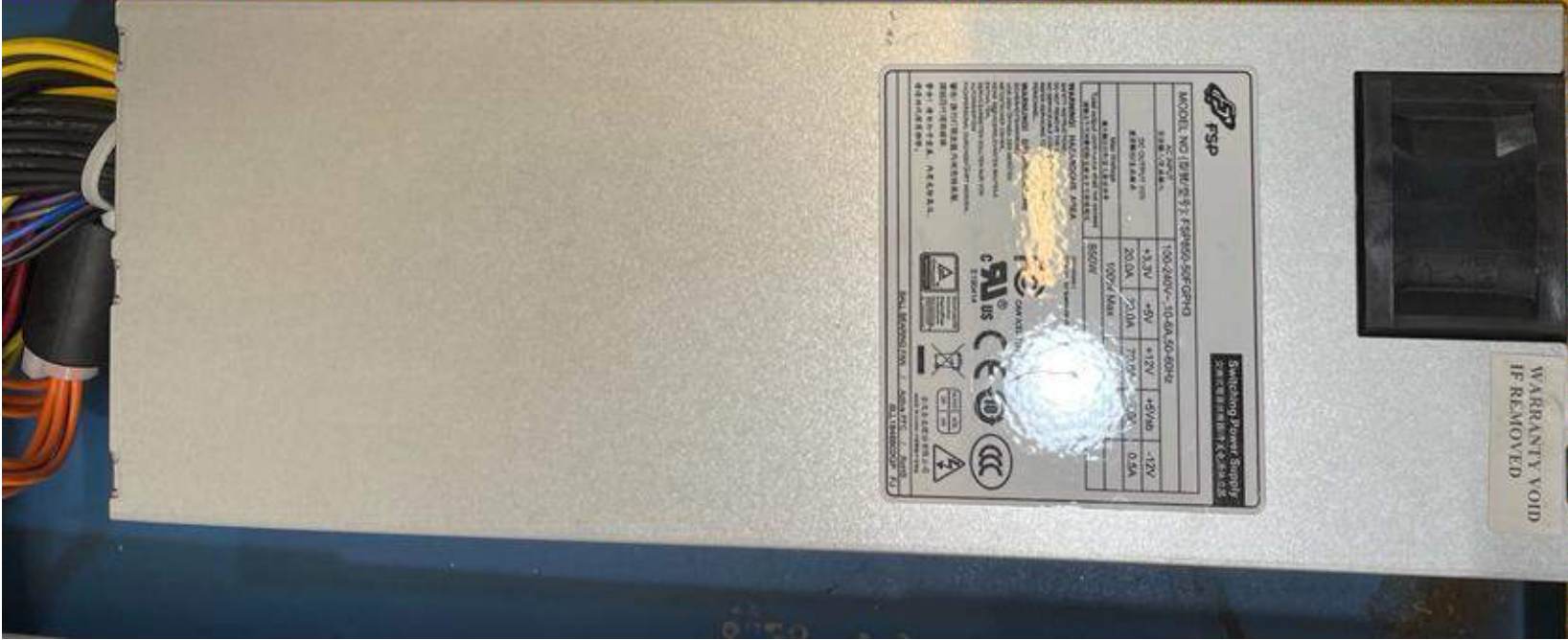
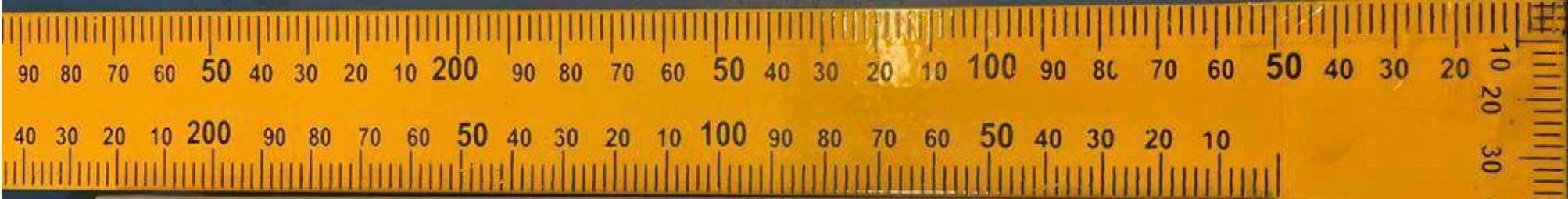
Q.C. PASSED

UDE
L22H027-0
2218YT

Novgen®







FSP
Switching Power Supply
MODEL NO. 120W/2.5 E-SM060-50F-GRHS

DC OUTPUT VOLTAGE	100-240V~	10-0A	50-60Hz		
DC OUTPUT POWER	+3.3V	+5V	+12V	+12V@	-12V
	20.0A	2.10A	7.50V	0.5A	0.1A
MAX. OUTPUT CURRENT	1000V/5Amps	5000V/1Amps			

REGULATED OUTPUT VOLTAGE: 5.0V
REGULATED OUTPUT CURRENT: 1.0A
REGULATED OUTPUT POWER: 5.0W
REGULATED OUTPUT EFFICIENCY: 80%
REGULATED OUTPUT RISE TIME: 100μs
REGULATED OUTPUT FALL TIME: 100μs
REGULATED OUTPUT LOAD REGULATION: 0.5%
REGULATED OUTPUT LINE REGULATION: 0.5%
REGULATED OUTPUT TEMPERATURE COEFFICIENT: 0.01%/°C
REGULATED OUTPUT HOLD-UP TIME: 20ms
REGULATED OUTPUT HOLD-UP CURRENT: 1.0A
REGULATED OUTPUT HOLD-UP POWER: 5.0W
REGULATED OUTPUT HOLD-UP ENERGY: 10J
REGULATED OUTPUT HOLD-UP TIME AT 100% LOAD: 20ms
REGULATED OUTPUT HOLD-UP TIME AT 50% LOAD: 40ms
REGULATED OUTPUT HOLD-UP TIME AT 25% LOAD: 80ms
REGULATED OUTPUT HOLD-UP TIME AT 10% LOAD: 160ms
REGULATED OUTPUT HOLD-UP TIME AT 5% LOAD: 320ms
REGULATED OUTPUT HOLD-UP TIME AT 2% LOAD: 640ms
REGULATED OUTPUT HOLD-UP TIME AT 1% LOAD: 1280ms
REGULATED OUTPUT HOLD-UP TIME AT 0.5% LOAD: 2560ms
REGULATED OUTPUT HOLD-UP TIME AT 0.2% LOAD: 5120ms
REGULATED OUTPUT HOLD-UP TIME AT 0.1% LOAD: 10240ms
REGULATED OUTPUT HOLD-UP TIME AT 0.05% LOAD: 20480ms
REGULATED OUTPUT HOLD-UP TIME AT 0.02% LOAD: 40960ms
REGULATED OUTPUT HOLD-UP TIME AT 0.01% LOAD: 81920ms
REGULATED OUTPUT HOLD-UP TIME AT 0.005% LOAD: 163840ms
REGULATED OUTPUT HOLD-UP TIME AT 0.002% LOAD: 327680ms
REGULATED OUTPUT HOLD-UP TIME AT 0.001% LOAD: 655360ms
REGULATED OUTPUT HOLD-UP TIME AT 0.0005% LOAD: 1310720ms
REGULATED OUTPUT HOLD-UP TIME AT 0.0002% LOAD: 2621440ms
REGULATED OUTPUT HOLD-UP TIME AT 0.0001% LOAD: 5242880ms
REGULATED OUTPUT HOLD-UP TIME AT 0.00005% LOAD: 10485760ms
REGULATED OUTPUT HOLD-UP TIME AT 0.00002% LOAD: 20971520ms
REGULATED OUTPUT HOLD-UP TIME AT 0.00001% LOAD: 41943040ms
REGULATED OUTPUT HOLD-UP TIME AT 0.000005% LOAD: 83886080ms
REGULATED OUTPUT HOLD-UP TIME AT 0.000002% LOAD: 167772160ms
REGULATED OUTPUT HOLD-UP TIME AT 0.000001% LOAD: 335544320ms
REGULATED OUTPUT HOLD-UP TIME AT 0.0000005% LOAD: 671088640ms
REGULATED OUTPUT HOLD-UP TIME AT 0.0000002% LOAD: 1342177280ms
REGULATED OUTPUT HOLD-UP TIME AT 0.0000001% LOAD: 2684354560ms
REGULATED OUTPUT HOLD-UP TIME AT 0.00000005% LOAD: 5368709120ms
REGULATED OUTPUT HOLD-UP TIME AT 0.00000002% LOAD: 10737418240ms
REGULATED OUTPUT HOLD-UP TIME AT 0.00000001% LOAD: 21474836480ms
REGULATED OUTPUT HOLD-UP TIME AT 0.000000005% LOAD: 42949672960ms
REGULATED OUTPUT HOLD-UP TIME AT 0.000000002% LOAD: 85899345920ms
REGULATED OUTPUT HOLD-UP TIME AT 0.000000001% LOAD: 171798691840ms
REGULATED OUTPUT HOLD-UP TIME AT 0.0000000005% LOAD: 343597383680ms
REGULATED OUTPUT HOLD-UP TIME AT 0.0000000002% LOAD: 687194767360ms
REGULATED OUTPUT HOLD-UP TIME AT 0.0000000001% LOAD: 1374389534720ms
REGULATED OUTPUT HOLD-UP TIME AT 0.00000000005% LOAD: 2748779069440ms
REGULATED OUTPUT HOLD-UP TIME AT 0.00000000002% LOAD: 5497558138880ms
REGULATED OUTPUT HOLD-UP TIME AT 0.00000000001% LOAD: 10995116277760ms
REGULATED OUTPUT HOLD-UP TIME AT 0.000000000005% LOAD: 21990232555520ms
REGULATED OUTPUT HOLD-UP TIME AT 0.000000000002% LOAD: 43980465111040ms
REGULATED OUTPUT HOLD-UP TIME AT 0.000000000001% LOAD: 87960930222080ms
REGULATED OUTPUT HOLD-UP TIME AT 0.0000000000005% LOAD: 175921860444160ms
REGULATED OUTPUT HOLD-UP TIME AT 0.0000000000002% LOAD: 351843720888320ms
REGULATED OUTPUT HOLD-UP TIME AT 0.0000000000001% LOAD: 703687441776640ms
REGULATED OUTPUT HOLD-UP TIME AT 0.00000000000005% LOAD: 1407374883553280ms
REGULATED OUTPUT HOLD-UP TIME AT 0.00000000000002% LOAD: 2814749767106560ms
REGULATED OUTPUT HOLD-UP TIME AT 0.00000000000001% LOAD: 5629499534213120ms
REGULATED OUTPUT HOLD-UP TIME AT 0.000000000000005% LOAD: 11258999068426240ms
REGULATED OUTPUT HOLD-UP TIME AT 0.000000000000002% LOAD: 22517998136852480ms
REGULATED OUTPUT HOLD-UP TIME AT 0.000000000000001% LOAD: 45035996273704960ms
REGULATED OUTPUT HOLD-UP TIME AT 0.0000000000000005% LOAD: 90071992547409920ms
REGULATED OUTPUT HOLD-UP TIME AT 0.0000000000000002% LOAD: 180143985094819840ms
REGULATED OUTPUT HOLD-UP TIME AT 0.0000000000000001% LOAD: 360287970189639680ms
REGULATED OUTPUT HOLD-UP TIME AT 0.00000000000000005% LOAD: 720575940379279360ms
REGULATED OUTPUT HOLD-UP TIME AT 0.00000000000000002% LOAD: 1441151880758558720ms
REGULATED OUTPUT HOLD-UP TIME AT 0.00000000000000001% LOAD: 2882303761517117440ms
REGULATED OUTPUT HOLD-UP TIME AT 0.000000000000000005% LOAD: 5764607523034234880ms
REGULATED OUTPUT HOLD-UP TIME AT 0.000000000000000002% LOAD: 11529215046068469760ms
REGULATED OUTPUT HOLD-UP TIME AT 0.000000000000000001% LOAD: 23058430092136939520ms
REGULATED OUTPUT HOLD-UP TIME AT 0.0000000000000000005% LOAD: 46116860184273879040ms
REGULATED OUTPUT HOLD-UP TIME AT 0.0000000000000000002% LOAD: 92233720368547758080ms
REGULATED OUTPUT HOLD-UP TIME AT 0.0000000000000000001% LOAD: 184467440737095516160ms
REGULATED OUTPUT HOLD-UP TIME AT 0.00000000000000000005% LOAD: 368934881474191032320ms
REGULATED OUTPUT HOLD-UP TIME AT 0.00000000000000000002% LOAD: 737869762948382064640ms
REGULATED OUTPUT HOLD-UP TIME AT 0.00000000000000000001% LOAD: 1475739525896764129280ms
REGULATED OUTPUT HOLD-UP TIME AT 0.000000000000000000005% LOAD: 2951479051793528258560ms
REGULATED OUTPUT HOLD-UP TIME AT 0.000000000000000000002% LOAD: 5902958103587056517120ms
REGULATED OUTPUT HOLD-UP TIME AT 0.000000000000000000001% LOAD: 11805916207174113034240ms
REGULATED OUTPUT HOLD-UP TIME AT 0.0000000000000000000005% LOAD: 23611832414348226068480ms
REGULATED OUTPUT HOLD-UP TIME AT 0.0000000000000000000002% LOAD: 47223664828696452136960ms
REGULATED OUTPUT HOLD-UP TIME AT 0.0000000000000000000001% LOAD: 94447329657392904273920ms
REGULATED OUTPUT HOLD-UP TIME AT 0.00000000000000000000005% LOAD: 188894659314785808547840ms
REGULATED OUTPUT HOLD-UP TIME AT 0.00000000000000000000002% LOAD: 377789318629571617095680ms
REGULATED OUTPUT HOLD-UP TIME AT 0.00000000000000000000001% LOAD: 755578637259143234191360ms
REGULATED OUTPUT HOLD-UP TIME AT 0.000000000000000000000005% LOAD: 1511157274518286468382720ms
REGULATED OUTPUT HOLD-UP TIME AT 0.000000000000000000000002% LOAD: 3022314549036572936765440ms
REGULATED OUTPUT HOLD-UP TIME AT 0.000000000000000000000001% LOAD: 6044629098073145873530880ms
REGULATED OUTPUT HOLD-UP TIME AT 0.0000000000000000000000005% LOAD: 12089258196146291747061760ms
REGULATED OUTPUT HOLD-UP TIME AT 0.0000000000000000000000002% LOAD: 24178516392292583494123520ms
REGULATED OUTPUT HOLD-UP TIME AT 0.0000000000000000000000001% LOAD: 48357032784585166988247040ms
REGULATED OUTPUT HOLD-UP TIME AT 0.00000000000000000000000005% LOAD: 96714065569170333976494080ms
REGULATED OUTPUT HOLD-UP TIME AT 0.00000000000000000000000002% LOAD: 193428131138340667952988160ms
REGULATED OUTPUT HOLD-UP TIME AT 0.00000000000000000000000001% LOAD: 386856262276681335905976320ms
REGULATED OUTPUT HOLD-UP TIME AT 0.000000000000000000000000005% LOAD: 773712524553362671811952640ms
REGULATED OUTPUT HOLD-UP TIME AT 0.000000000000000000000000002% LOAD: 1547425049106725343623905280ms
REGULATED OUTPUT HOLD-UP TIME AT 0.000000000000000000000000001% LOAD: 3094850098213450687247810560ms
REGULATED OUTPUT HOLD-UP TIME AT 0.0000000000000000000000000005% LOAD: 6189700196426901374495621120ms
REGULATED OUTPUT HOLD-UP TIME AT 0.0000000000000000000000000002% LOAD: 12379400392853802748991242240ms
REGULATED OUTPUT HOLD-UP TIME AT 0.0000000000000000000000000001% LOAD: 24758800785707605497982484480ms
REGULATED OUTPUT HOLD-UP TIME AT 0.00000000000000000000000000005% LOAD: 49517601571415210995964968960ms
REGULATED OUTPUT HOLD-UP TIME AT 0.00000000000000000000000000002% LOAD: 99035203142830421991929937920ms
REGULATED OUTPUT HOLD-UP TIME AT 0.00000000000000000000000000001% LOAD: 198070406285660843983859875840ms
REGULATED OUTPUT HOLD-UP TIME AT 0.000000000000000000000000000005% LOAD: 396140812571321687967719751680ms
REGULATED OUTPUT HOLD-UP TIME AT 0.000000000000000000000000000002% LOAD: 792281625142643375935439503360ms
REGULATED OUTPUT HOLD-UP TIME AT 0.000000000000000000000000000001% LOAD: 1584563250285286751870879006720ms
REGULATED OUTPUT HOLD-UP TIME AT 0.0000000000000000000000000000005% LOAD: 3169126500570573503741758013440ms
REGULATED OUTPUT HOLD-UP TIME AT 0.0000000000000000000000000000002% LOAD: 6338253001141147007483516026880ms
REGULATED OUTPUT HOLD-UP TIME AT 0.0000000000000000000000000000001% LOAD: 12676506002282294014967032053760ms
REGULATED OUTPUT HOLD-UP TIME AT 0.00000000000000000000000000000005% LOAD: 25353012004564588029934064107520ms
REGULATED OUTPUT HOLD-UP TIME AT 0.00000000000000000000000000000002% LOAD: 50706024009129176059868128215040ms
REGULATED OUTPUT HOLD-UP TIME AT 0.00000000000000000000000000000001% LOAD: 101412048018258352119736256430080ms
REGULATED OUTPUT HOLD-UP TIME AT 0.000000000000000000000000000000005% LOAD: 202824096036516704239472512860160ms
REGULATED OUTPUT HOLD-UP TIME AT 0.000000000000000000000000000000002% LOAD: 405648192073033408478945025720320ms
REGULATED OUTPUT HOLD-UP TIME AT 0.000000000000000000000000000000001% LOAD: 811296384146066816957890051440640ms
REGULATED OUTPUT HOLD-UP TIME AT 0.0000000000000000000000000000000005% LOAD: 1622592768292133633915780102881280ms
REGULATED OUTPUT HOLD-UP TIME AT 0.0000000000000000000000000000000002% LOAD: 3245185536584267267831560205762560ms
REGULATED OUTPUT HOLD-UP TIME AT 0.0000000000000000000000000000000001% LOAD: 6490371073168534535663120411525120ms
REGULATED OUTPUT HOLD-UP TIME AT 0.00000000000000000000000000000000005% LOAD: 12980742146337069071326240823050240ms
REGULATED OUTPUT HOLD-UP TIME AT 0.00000000000000000000000000000000002% LOAD: 25961484292674138142652481646100480ms
REGULATED OUTPUT HOLD-UP TIME AT 0.00000000000000000000000000000000001% LOAD: 51922968585348276285304963292200960ms
REGULATED OUTPUT HOLD-UP TIME AT 0.000000000000000000000000000000000005% LOAD: 103845937170696552570609926584401920ms
REGULATED OUTPUT HOLD-UP TIME AT 0.000000000000000000000000000000000002% LOAD: 207691874341393105141219853168803840ms
REGULATED OUTPUT HOLD-UP TIME AT 0.000000000000000000000000000000000001% LOAD: 415383748682786210282439706337607680ms
REGULATED OUTPUT HOLD-UP TIME AT 0.0000000000000000000000000000000000005% LOAD: 830767497365572420564879412675215360ms
REGULATED OUTPUT HOLD-UP TIME AT 0.0000000000000000000000000000000000002% LOAD: 1661534994731144841129758825350430720ms
REGULATED OUTPUT HOLD-UP TIME AT 0.0000000000000000000000000000000000001% LOAD: 3323069989462289682259517650700861440ms
REGULATED OUTPUT HOLD-UP TIME AT 0.00000000000000000000000000000000000005% LOAD: 6646139978924579364519035301401722880ms
REGULATED OUTPUT HOLD-UP TIME AT 0.00000000000000000000000000000000000002% LOAD: 13292279957849158729038070602803445760ms
REGULATED OUTPUT HOLD-UP TIME AT 0.00000000000000000000000000000000000001% LOAD: 26584559915698317458076141205606891520ms
REGULATED OUTPUT HOLD-UP TIME AT 0.000000000000000000000000000000000000005% LOAD: 53169119831396634916152282411213783040ms
REGULATED OUTPUT HOLD-UP TIME AT 0.000000000000000000000000000000000000002% LOAD: 106338239662793269832304564822427566080ms
REGULATED OUTPUT HOLD-UP TIME AT 0.000000000000000000000000000000000000001% LOAD: 212676479325586539664609129644855132160ms
REGULATED OUTPUT HOLD-UP TIME AT 0.0000000000000000000000000000000000000005% LOAD: 425352958651173079329218259289710264320ms
REGULATED OUTPUT HOLD-UP TIME AT 0.0000000000000000000000000000000000000002% LOAD: 850705917302346158658436518579420528640ms
REGULATED OUTPUT HOLD-UP TIME AT 0.0000000000000000000000000000000000000001% LOAD: 1701411834604692317316873037158841057280ms
REGULATED OUTPUT HOLD-UP TIME AT 0.005% LOAD: 3402823669209384634633746074317682114560ms
REGULATED OUTPUT HOLD-UP TIME AT 0.002% LOAD: 6805647338418769269267492148635364229120ms
REGULATED OUTPUT HOLD-UP TIME AT 0.001% LOAD: 13611294676837538538534984297270728458240ms
REGULATED OUTPUT HOLD-UP TIME AT 0.0005% LOAD: 27222589353675077077069968594541456916480ms
REGULATED OUTPUT HOLD-UP TIME AT 0.0002% LOAD: 54445178707350154154139937189082913832960ms
REGULATED OUTPUT HOLD-UP TIME AT 0.0001% LOAD: 108890357414700308308279874378165827665920ms
REGULATED OUTPUT HOLD-UP TIME AT 0.005% LOAD: 217780714829400616616559748756331655331840ms
REGULATED OUTPUT HOLD-UP TIME AT 0.002% LOAD: 435561429658801233233119497512663310663680ms
REGULATED OUTPUT HOLD-UP TIME AT 0.001% LOAD: 871122859317602466466238995025326621327360ms
REGULATED OUTPUT HOLD-UP TIME AT 0.0005% LOAD: 1742245718635204932932477990050653242654720ms
REGULATED OUTPUT HOLD-UP TIME AT 0.0002% LOAD: 3484491437270409865864955980101306485309440ms
REGULATED OUTPUT HOLD-UP TIME AT 0.0001% LOAD: 6968982874540819731729911960202612970618880ms
REGULATED OUTPUT HOLD-UP TIME AT 0.005% LOAD: 13937965749081639463459823920405225941237760ms
REGULATED OUTPUT HOLD-UP TIME AT 0.002% LOAD: 27875931498163278926919647840810451882475520ms
REGULATED OUTPUT HOLD-UP TIME AT 0.001% LOAD: 55751862996326557853839295681620903764951040ms
REGULATED OUTPUT HOLD-UP TIME AT 0.0005% LOAD: 111503725992653115707678591363241807529902080ms
REGULATED OUTPUT HOLD-UP TIME AT 0.0002% LOAD: 223007451985306231415357182726483615059804160ms
REGULATED OUTPUT HOLD-UP TIME AT 0.0001% LOAD: 446014903970612462830714365452967230119608320ms
REGULATED OUTPUT HOLD-UP TIME AT 0.005% LOAD: 892029807941224925661428730905934460239216640ms
REGULATED OUTPUT HOLD-UP TIME AT 0.002% LOAD: 1784059615882449851322857461811868920478433280ms
REGULATED OUTPUT HOLD-UP TIME AT 0.001% LOAD: 3568119231764899702645714923623737840956866560ms
REGULATED OUTPUT HOLD-UP TIME AT 0.0005% LOAD: 7136238463529799405291429847247475681913733120ms
REGULATED OUTPUT HOLD-UP TIME AT 0.0002% LOAD: 14272476927059598810582859694494951363827466240ms
REGULATED OUTPUT HOLD-UP TIME AT 0.0001% LOAD: 28544953854119197621165719388989902727654932480ms
REGULATED OUTPUT HOLD-UP TIME AT 0.005% LOAD: 57089907708238395242331438777979805455309864960ms
REGULATED OUTPUT HOLD-UP TIME AT 0.002% LOAD: 114179815416476790484662877555959610910619729920ms
REGULATED OUTPUT HOLD-UP TIME AT 0.001% LOAD: 228359630832953580969325755111919221821239459840ms
REGULATED OUTPUT HOLD-UP TIME AT 0.0005% LOAD: 456719261665907161938651510223838443642478919680ms
REGULATED OUTPUT HOLD-UP TIME AT 0.0002% LOAD: 913438523331814323877303020447676887284957839360ms
REGULATED OUTPUT HOLD-UP TIME AT 0.0001% LOAD: 1826877046663628647754606040895353774569915678720ms
REGULATED OUTPUT HOLD-UP TIME AT 0.005% LOAD: 3653754093327257295509212081790707549139831357440ms
REGULATED OUTPUT HOLD-UP TIME AT 0.002% LOAD: 7307508186654514591018424163581415098279662714880ms
REGULATED OUTPUT HOLD-UP TIME AT 0.001% LOAD: 14615016373309029182036848327162830196559325429760ms
REGULATED OUTPUT HOLD-UP TIME AT 0.0005% LOAD: 29230032746618058364073696654325660393118510859520ms
REGULATED OUTPUT HOLD-UP TIME AT 0.0002% LOAD: 58460065493236116728147393308651320786237021719040ms
REGULATED OUTPUT HOLD-UP TIME AT 0.0001% LOAD: 116920130986472233456294786617302641572474043438080ms
REGULATED OUTPUT HOLD-UP TIME AT 0.005% LOAD: 23384026197294446691258957323460528314494808687680ms
REGULATED OUTPUT HOLD-UP TIME AT

Naveen®



B

A

M301E-24
32568A3

M301E-24
32568A3



NOVGEN®

646891518850
000327228
0003271-006

intel

HF-b6-e1/e1

PHISON

PHISON

Naveen®

