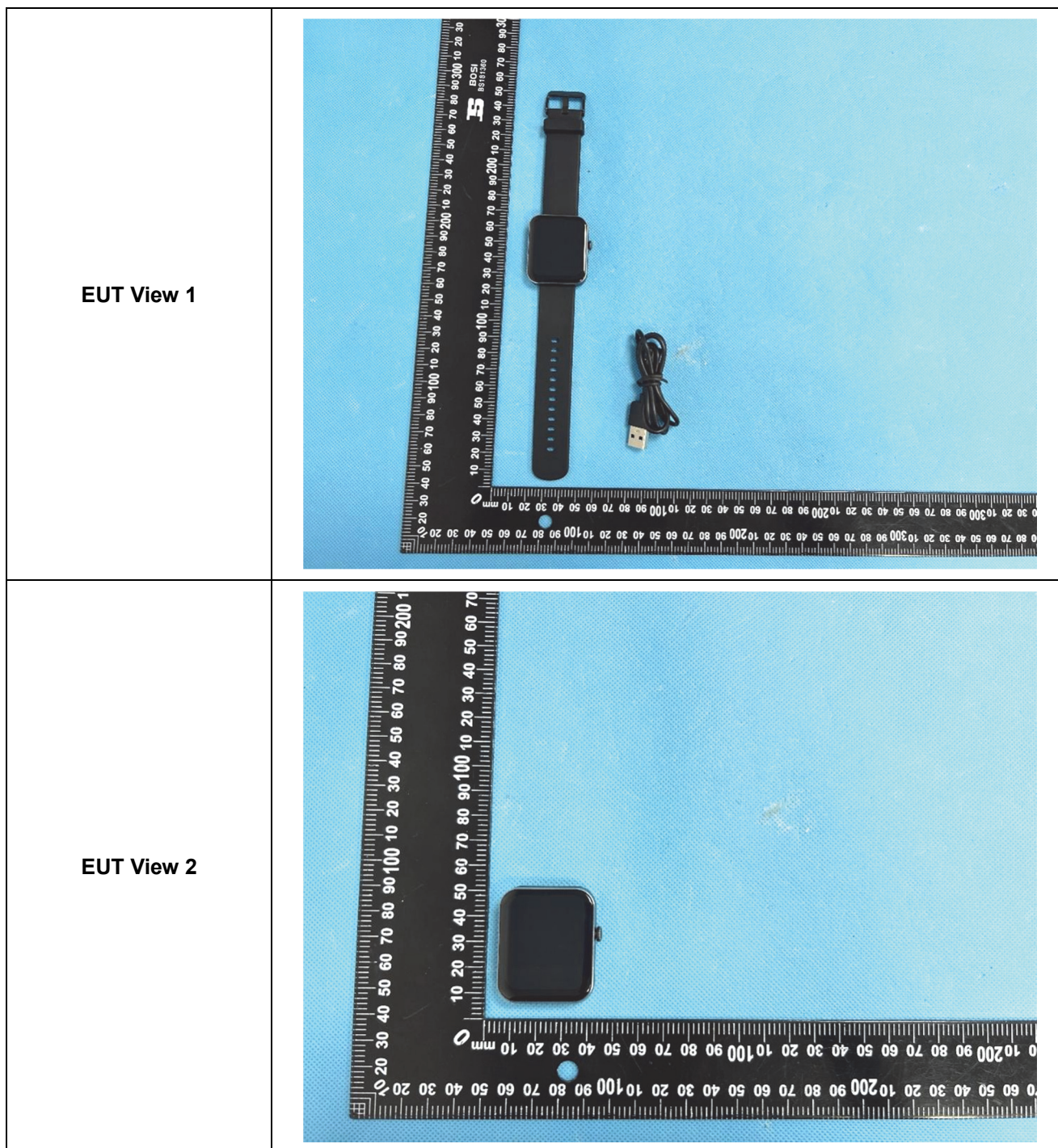

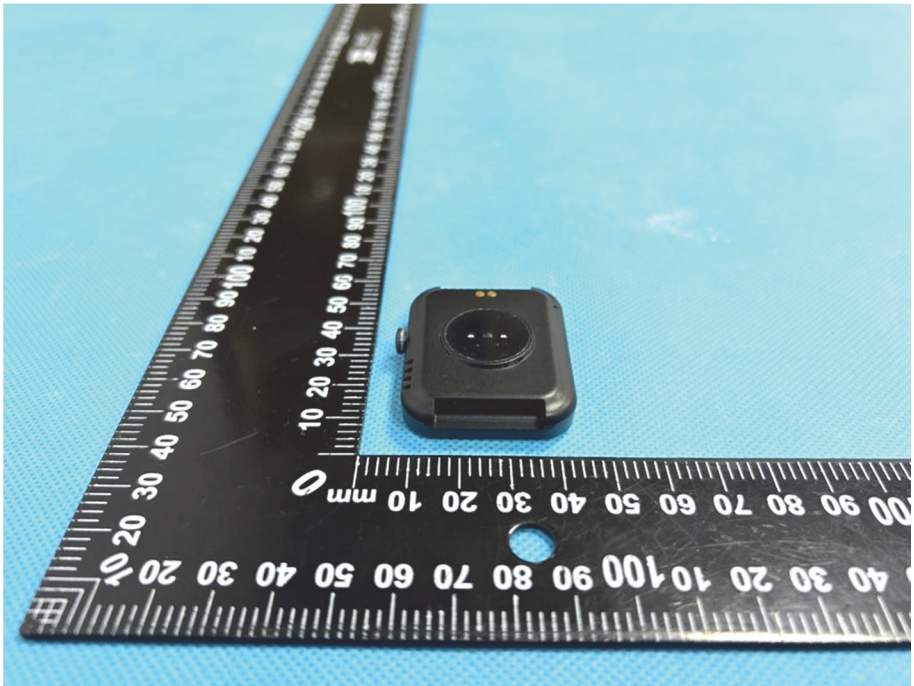
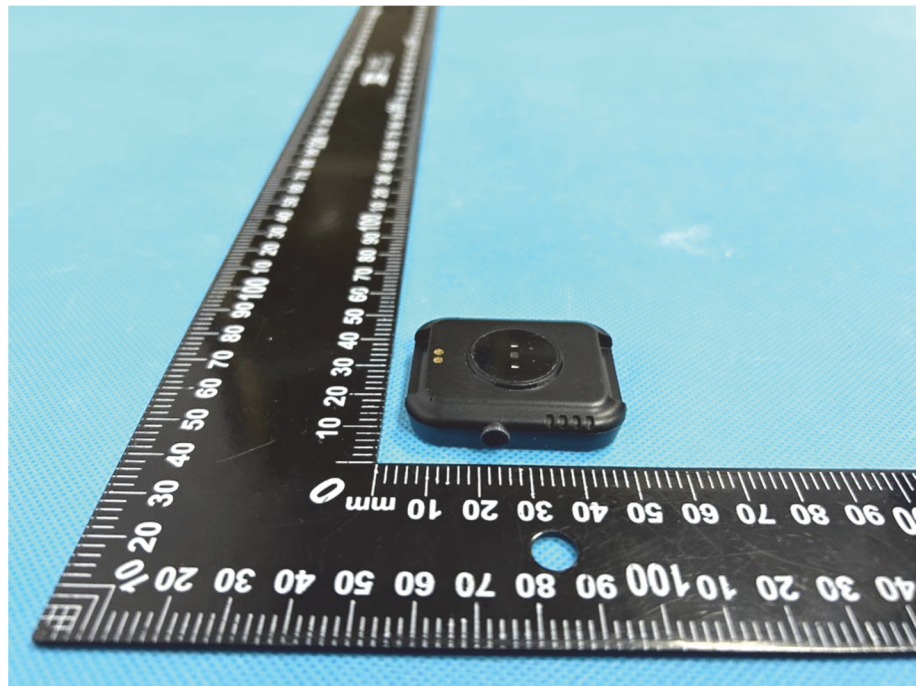


EXHIBIT 2 - EUT EXTERNAL PHOTOGRAPHS

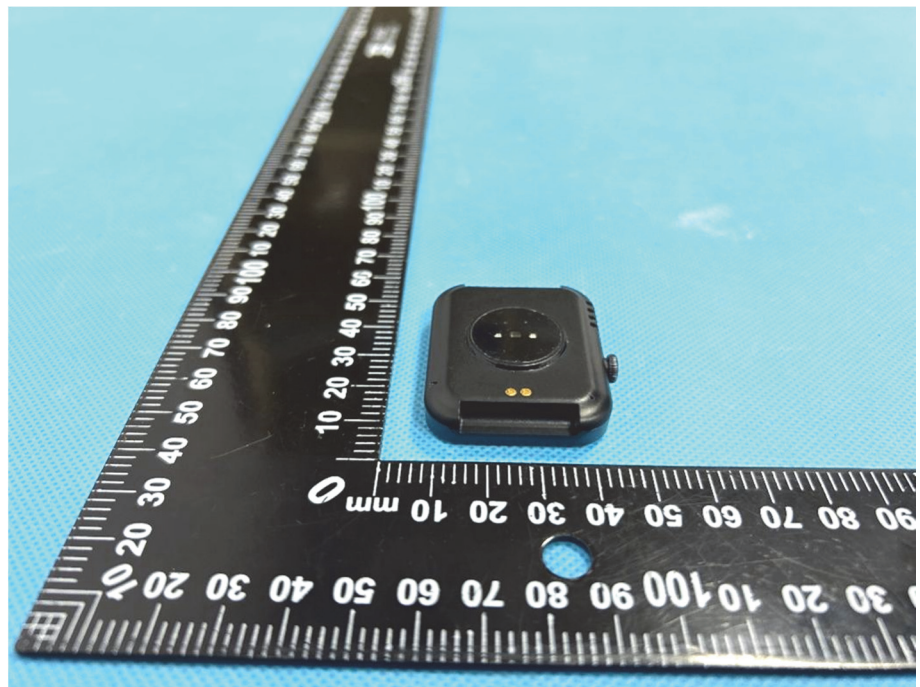


<p>EUT View 3</p>	 A photograph showing a small, black, rectangular electronic device (EUT) with a lens and two small yellow LEDs. The device is placed on a blue textured surface. A black L-shaped ruler is positioned next to it for scale. The ruler has markings in millimeters and centimeters. The device is approximately 15mm wide and 10mm high.
<p>EUT View 4</p>	 A photograph showing a close-up view of the same small, black, rectangular electronic device (EUT) from a different angle. The device is placed on a blue textured surface. A black L-shaped ruler is positioned next to it for scale. The ruler has markings in millimeters and centimeters. The device is approximately 15mm wide and 10mm high.

EUT View 5



EUT View 6



EUT View 7

