



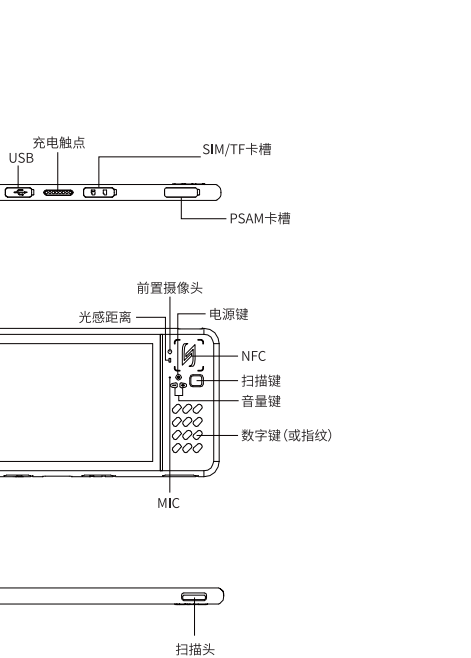
FG80系列 快速入门指南



本手册仅供参考，具体功能及产品图片可能与实物有细微差别，请以实物为准

使用产品前请先阅读本使用指南

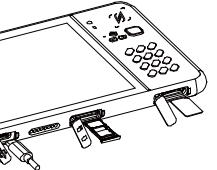
产品外观



安装SIM卡、TF卡、PSAM卡

插卡时请注意卡片缺口方向，插入非标准卡片可能会导致设备SIM卡座的损坏。
卡槽1、2可以任意切换为默认移动数据卡；如果两张都是电信卡，副卡（非默认移动数据卡）必须开通电信VoLTE业务，才能同时使用电信双卡；5G/4G网络使用，需要根据运营商网络和相关业务部署情况确定是否支持；电信双卡时，副卡（非默认移动数据卡）不支持电信2G。

安装SIM卡、TF卡时，需用卡针取出卡托，安装卡时，请注意方向



重新启动设备

按住开关机键2秒，点击重新启动。

强制重新启动设备

按住开机键8秒，可强制重新启动设备。

为电池充电

首次使用本产品之前，建议为电池充电。
△注意：充电器应保持紧贴电源插座并易于拔插。

使用扫描功能

进入“设置>扫描”设置菜单，启动扫描，进行扫描功能设置。



小心激光

扫描引擎带有二类激光，在使用过程中请避免直接照射人眼，避免持续凝视激光，以免对人眼造成不可逆伤害。

注意事项！

设备应当在-20℃~55℃的环境中使用，储藏温度应介于-30℃~70℃之间。温度过高或过低将会影响设备的性能，甚至造成设备和电池的损坏。
请在5℃~35℃的环境中为设备充电，以免造成电池性能下降、待机时间减少。自行刷新非官方的ROM系统或者破解修改设备的系统文件，将会导致系统出现安全风险，思必拓将不会对此类风险承担责任。



电磁辐射

本产品电磁辐射比吸收率最大值（SAR）≤2.0 W/kg。
有植入心脏起搏器、助听器、人工耳蜗等的使用者在使用本产品时请遵循医嘱。



安全警示！

- 自行拆解电池
- 强力挤压或刺破设备
- 通过非官方渠道维修设备
- 使用非标配的充电器和数据线充电
- 将设备放入微波炉、火源，或放在其他热源附近

产品参数

基本参数	
尺寸	253mm*136mm*14.2mm（基本款）
重量	608g（基础款重量，取决于配置）
系统	Android 11
处理器	8核2.0GHz/8核2.2GHz
RAM	3GB/4GB/6GB
ROM	32GB/64GB/128GB
摄像头	800万前置摄像头, 1300万后置摄像头, 高亮度LED闪光灯
显示屏	8.0寸, 1920*1200, 5点电容触摸屏
GPS	GPS/GLONASS/BEIDOU
NFC	支持协议：ISO14443A/B, ISO15693, 读取距离：0~5cm
电池	内置锂离子聚合物电池3.85V 7200mAh
无线通信	
蓝牙	BT5.0 BLE/BT5.1 BLE
Wi-Fi	IEEE 802.11 a/b/g/n/ac 2.4G 5G双频, 支持快速漫游
网络通信 (5G版)	5G-NR N1/N3/N28A/N41/N77/N78/N79
	FDD-LTE B1/B2/B3/B5/B7/B8/B28A TDD-LTE B34/B38/B39/B40/B41 WCDMA B1/B2/B5/B8 GSM B2/B3/B5/B8 CDMA BC0/BC1
网络通信 (4G版)	GSM: B2/B3/5B/B8 CDMA: BC0/BC1 WCDMA: B1/B2/B5/B8 FDD: B1/B3/B5/B7/B8 TDD: B38/B39/B40/B41

特殊功能	
条码	扫描引擎：新大陆CM60 条码类型：支持码制: EAN13, EAN8, UPCA, UPC-E, Code 128, Code 39, Codabar, UCC/EAN128, RSS, ITF, ITF14, ITF6, ISSN, ISBN, Standard 25, Matrix 25, Industrial 25, Plessey, MSI Plessey, Code 11, Code 93, PDF417, QR Code, DataMatrix, AZTEC, 汉信码, Maxicode, Micro QR, Micro PDF417, Composite
RFID (超高频) (选配)	协议标准：ISO18000-6C协议 工作频率：中国（920~925MHz, 840~845MHz），北美（902~928MHz） 天线参数：陶瓷天线（1.5dBi） 功率：工作电压 3.6~5V, 射频输出5dBm到30dBm（1W），1dbm可调； 待机功耗 0.25W 左右，最大 4W（典型 3.5W） 识别范围：室内>3m, 室外空旷环境>1.5m 群读速率：>30标签每秒
指纹 (选配)	电容指纹模组：有效像素256*360，分辨率508DPI，支持采集、识别 光学指纹模组：Morpho CBM-E3，500DPI, 256 灰度
二代身份证 背夹 (选配)	读卡距离：0~3cm 工作频率：符合ISO14443 Type B标准；13.56MHz 主要特征：二、三代身份证，且兼容四种芯片的身份证 支持外国人永久居留身份证识读 支持港澳台永久居留身份证识读
接口	
卡槽	1个Nano SIM卡槽，1个Nano SIM/TF卡槽，可选配PSAM卡槽
USB	USB TYPE-C接口，支持OTG，快速充电 5V/9V 1.67A
其他	底部充电触点

可靠性	
工作温度	-20℃~40℃
存储温度	-30℃~70℃
湿度	5%~95%
静电防护	空气放电±15kv，接触放电±8kv
防护 (基本款)	6面均可承受1.5m跌落到水泥地面，IP67防尘防水
配件	
充电器	1
USB数据线	1
腕带	1
快捷指南	1
充电底座 (可选)	1



环保说明：

有毒有害物质或元素名称及含量表

部件名称	有毒有害物质或元素					
	镉 (Cd)	汞 (Hg)	镍 (Ni)	六价铬 (Cr6+)	多溴联苯 (PBB)	多溴二苯醚 (PBDE)
主机	主板	X	0	0	0	0
	显示屏	0	0	0	0	0
	塑料	0	0	0	0	0
附件	金属	X	0	0	0	0
	电池	X	0	0	0	0

0：表示该有毒有害物质在该部件所有均质材料中的含量均在GB/T 26572—2011规定的限量要求以下。
X：表示该有毒有害物质至少在该部件的某一均质材料中的含量超出GB/T 26572—2011规定的限量要求。
注：本产品标有“X”的原因是：现阶段没有可供选择的替代技术或部件。请妥善处理此类部件或物质，以免对环境 and 人体健康造成影响。

本产品的“环保使用期限”为10年。某些内部或外部组件的环保使用期限可能与产品的环保使用期限不同。组件上的使用期限标识优先于产品上任何与之相冲突的或不同的环保使用期限标识。本产品所标环保使用期限是指本信息指南规定的使用条件下使用产品不发生有毒有害物质泄露的安全年限。

访问更多信息

查看Android版本和软件版本，请点击：设置>关于手机。
△注意
访问互联网、收发信息、上传和下载、进行自动同步、使用某些应用程序或使用定位服务可能会产生其他费用。为避免产生额外费用，请联系服务提供商并选择合适的资费套餐。

保修凭证

客户名称：_____

联系电话：_____

用户姓名：_____

通讯地址：_____

邮件地址：_____

产品信息：_____

设备序列号
「_____」

注意：保修卡是获取保修服务的重要凭证，请保存好此卡，一旦丢失或者不能提供设备序列号，将无法提供质保。

- 下列情况不属于保修范围：
- 已经超出保修期限；
 - 任何未经思必拓授权许可的改装、拆卸、维修；
 - 意外因素或人为行为导致产品损坏，如：如进液、摔损、输入不合适电压、过度挤压、主板变形及其他；
 - 未按使用说明书要求安装、使用、维护、保管导致的产品故障或损坏；
 - 产品铭牌、SN条码、防伪标签被撕掉或被损坏，模糊不清无法识别；
 - 保修凭证与产品型号不符或保修凭证被涂改；
 - 由于不可抗因素（如火灾、地震、水灾等）而造成的故障或损坏；

开发支持：全球技术支持：GlobalFAE@speedatagroup.com + 400 1088 019
中国区技术支持：FAE@speedatagroup.com

售后电话：_____



FG80 Series

Quick start guide

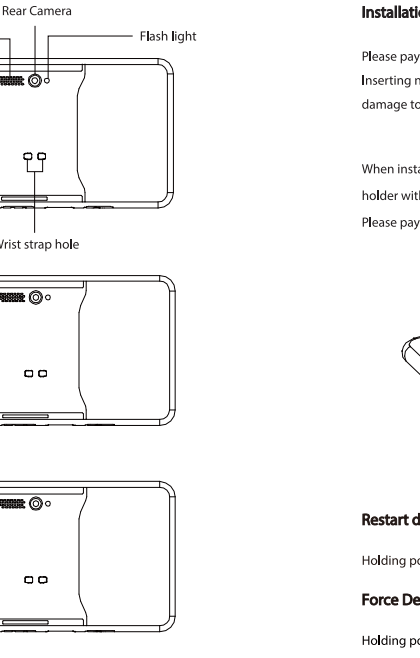
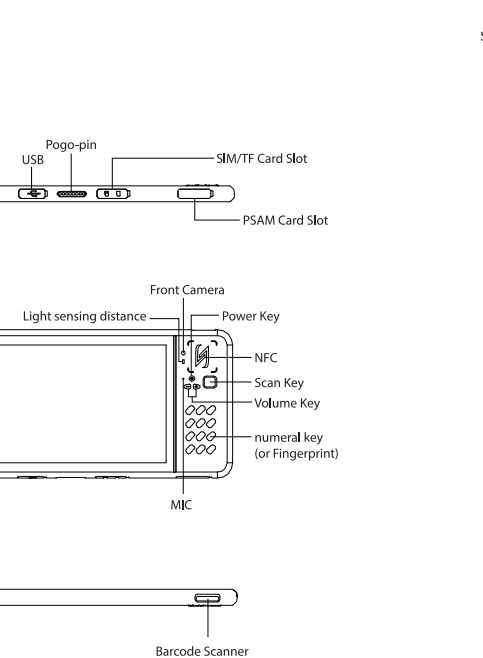


SPEEDATA WeChat Subscription

This manual is for reference only.
There might be subtle differences between actual product and picture.
Please refer to actual product.

Please read this manual before using product.

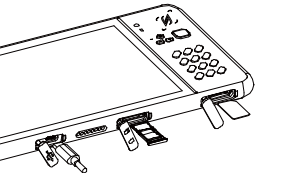
Product



Installation of SIM card ,SD Card and PSAM Card

Please pay attention to the direction of the card when inserting the card.
Inserting non-standard cards may cause damage to the SIM card slot of the device.

When installing SIM card and TF card, it is necessary to take out the card holder with the card needle.
Please pay attention to the direction when installing the card.



Restart device

Holding power button 2 seconds, choose restart.

Force Device Restart

Holding power button over 8 seconds.

Charge Power

Suggest to Charge Power before using device.
Note: The charger should be kept well connected to the power socket and easy to plug off.

Barcode Scanner

Go into "Settings>Scan", enable barcode scanner and configure other settings of barcode s canner.



Laser Radiation!

Barcode scanner is Class2 laser device, do not directly expose human eyes to laser.

safety Information!

Device is designed for working in -20°C~55°C environment,proper storage temperature is -30°C~70°C, lower or higher temperature would compromise device performance, even cause potential damage to device or battery.
Charge device in 5°C~35°C environment, in case of battery endurance weakness.No support or responsibility will be undertaken if end user update device with third party ROM or crack device system.



Electromagnetic Radiation

The maximum absorption rate of electromagnetic radiation is (SAR) ≤ 2.0 W/kg.
In special cases such as pacemakers, hearing aids, cochlear implants, users should follow the doctor's instructions.



Warning

- Disassembly battery.
- Demolition device.
- Repair device in unofficial service.
- Using uncertified USB cable.
- Put device into or near microwave oven, fire, or other heat source.

Product Specification

Data Sheet	
Dimension	253mm*136mm*14.2mm(Basic)
Weight	608g(based on configuration)
OS	Android 11
Processor	Octa-core 2GHz / Octa-core 2.2GHz
RAM	3GB/4GB/6GB
ROM	32GB/64GB/128GB
Camera	Rear 13MP,Front 8MP ,high brightness LED flash
Display	8.0inch,1920*1200,5-point Capacitive Touch Screen
GPS	GPS/GLONASS/BEIDOU
NFC	Support: ISO14443A/B, ISO15693 reading distance: 0-5cm
Battery	Built-in Li-ion 3.85V 7200mAh
Wireless Communication	
Bluetooth	BT5.0 BLE/BT5.1 BLE
Wi-Fi	IEEE 802.11 a/b/g/n/ac 2.4G 5G dual frequency support fast roaming
WWLAN (5G)	5G-NR N1/N3/N28A/N41/N77/N78/N79 FDD-LTE B1/B2/B3/B5/B7/B8/B28A TDD-LTE B34/B38/B39/B40/B41 WCDMA B1/B2/B5/B8 GSM B2/B3/B5/B8 CDMA BC0/BC1

WWLAN (4G)	GSM: B2/B3/5B/B8 CDMA: BC0/BC1 WCDMA: B1/B2/B5/B8 FDD: B1/B3/B5/B7/B8 TDD: B38/B39/B40/B41
Extended functions	
Barcode Scanner	Scan engine: NewLand: CM60 Barcode Type: support EAN13, EAN8, UPCA, UPCE, Code 128, Code 39, Codabar, UCC/EAN128, RSS,ITF, ITF14, ITF6, ISSN, ISBN, Standard 25, Matrix 25,Industrial 25,Plessey, MSI Plessey, Code 11, Code 93, PDF417, QR Code, DataMatrix, AZTEC, HanXin Code, Maxicode, Micro QR, Micro PDF417, Composite
UHF RFID Reader (optional)	Protocol standard: ISO18000-6C protocol Frequency: China(920-925MHz, 840-845MHz) North America(902-928MHz) European frequency(865-867MHz) Antenna parameters: ceramic antenna(1.5dBi) Power: working voltage 3.6-5V, RF output 5dBm to 30dBm (1W), 1dbm adjustable; Standby power consumption is about 0.25W, maximum is 4W (typical 3.5W) Reading Distance: indoor>3m, outdoor open environment>1.5m Group read rate: >30 tags per second
Fingerprint (optional)	Capacitive fingerprint module: effective pixel 256 * 360 resolution 508DPI, support acquisition and identification Optical fingerprint module: Morpho CBM-E3500DPI, 256 gray

Interface	
Card Slot	1 Nano SIM card slot, 1 Nano SIM/TF card slot optional PSAM card slot
USB	USB TYPE-C, Support OTG Fast Charging 5V/9V 1.67A
Other	Bottom charging contact
Reliability	
Working temperature	-20°C~40°C
Storage temperature	-30°C~70°C
Humidity	5%~95%
ESD protection	Air discharge ±15kv, contact discharge ±8kv
Protection (Basic)	Six sides can withstand 1.5m falling to the cement floor , IP67 Class
Accessory	
AC adaptor	1
USB cable	1
Wristband	1
Quick start guide	1
Charging base (Optional)	1



Environmental Protection

List of toxic and hazardous substances or elements

Parts		Toxic and hazardous substances or elements					
		Lead (Pb)	Mercury (Hg)	Cadmium (Cd)	hexavalent chromium (Cr6+)	poly-brominated biphenyls (PBB)	poly-brominated biphenyl ethers (PBDE)
Device	PCBA	X	0	0	0	0	0
	LCD	0	0	0	0	0	0
	Plastic	0	0	0	0	0	0
Battery	Metal	X	0	0	0	0	0
	Battery	X	0	0	0	0	0
Accessory		X	0	0	0	0	0

O:indicates that the toxic and hazardous substances in all homogenized materials of the componentare below the limit required by GB/T 26572-2011.
X:indicates that the toxic and hazardous substance in at least one homogeneous material of the component exceeds the limit set by GB/T 26572-2011.
Note: this productis labeled "X" because there are no alternative technologies or components available at this stage. Please handle such parts or materials properly to avoid environmental and human health effects.

This product's "environmental protection life" is 10 years. The environmental protection of some internal or external components may differ from the environmental life of the product.The service life mark on the component has precedence over any conflicting or different environmental life identification on the product.The term of environmental protection of this product refers to the safe life of using the product without toxic and harmful substances leakage under the conditions stipulated in this information guide.

For more Information

About the device Android and software versions, check in: settings > about the phone.
△Note: Accesso the Internet, send and receive information,upload and download, automatic synchronization, so that some applications or use of location services may incur other costs. To avoid additional charges, please contact the service provider and select the appropriate tariff package scheme.

Warranty Card

Company: _____

Tel: _____

Name: _____

Add: _____

E-mail: _____

Product Info: _____

SN and IMEI number:
└

Attention: Warranty card is an important certificate for obtaining warranty service. Please keep well this card. Once it is lost or the SN, IMEI number cannot be provided, then can not provide warranty service.

The following conditions are not covered by the warranty:
1. Warranty period has expired.
2. Any adapted, disassembly and maintenance without Speedata's permission;
3. Product damage caused by natural or human reasons, for example, water penetration, product falling, inappropriate voltage input, overcompression, mainboard transformation,etc;
4. Breakdowns or damage caused by failure to install, use, maintain and keep according to the requirements of the operation manual;
5. Fail to identify Product Nameplate, SN Number, IMEI Number, anti-tampering label for being torn, damaged or unclear.
6. Warranty Card is not in accordance with product model or has been falsified.
7. Breakdowns or damages by irresistible reasons like the occurrence of fire, earthquake, flood.

Technique Support: _____ After-sale service: _____
Please contact us for development support. + 400 1088 019
Global supportMail: GlobalFAE@speedatagroup.com
China Mainland support Mail: FAE@speedatagroup.com

FCC Radiation Exposure Statement:

This device meets the government's requirements for exposure to radio waves. The guidelines are based on standards that were developed by independent scientific organizations through periodic and thorough evaluation of scientific studies. The standards include a substantial safety margin designed to assure the safety of all persons regardless of age or health. The SAR limit of USA (FCC) is 1.6 W/kg averaged. Device types: Wireless mobile tablet data terminal (FCC ID: 2BAQOFG80) has also been tested against this SAR limit. SAR information on this and other pad can be viewed on-line at <http://www.fcc.gov/oet/ea/fccid/>. Please use the device FCC ID number for search. This device was tested simulation typical 0mm to body. To maintain compliance with FCC RF exposure requirements, use accessories should maintain a separation distance between the user's bodies mentioned above, use accessories should not contain metallic components in its assembly, the use of accessories that do not satisfy these requirements may not comply with FCC RF exposure requirements, and should be avoided.

FCC Warning

This device complies with Part 15 of the FCC Rules. Operation is subject to the following two conditions: (1) This device may not cause harmful interference, and (2) this device must accept any interference received, including interference that may cause undesired operation.

Any changes or modifications to this unit not expressly approved by the party responsible for compliance could void the user's authority to operate the equipment.

NOTE : This equipment has been tested and found to comply with the limits for a Class B digital device, pursuant to part 15 of the FCC Rules. These limits are designed to provide reasonable protection against harmful interference in a residential installation. This equipment generates uses and can radiate radio frequency energy and, if not installed and used in accordance with the instructions, may cause harmful interference to radio communications. However, there is no guarantee that interference will not occur in a particular installation. If this equipment does cause harmful interference to radio or television reception, which can be determined by turning the equipment off and on, the user is encouraged to try to correct the interference by one or more of the following measures:

hereby declares that this [Name: Wireless Data Terminal, Model: FG80] is in compliance with the essential requirements and other relevant provisions of Directive 2014/53/EU.

The product shall only be connected to a USB interface of version USB2.0 and that the connection to a power USB is allowed.



Adapter shall be installed near the equipment and shall be easily accessible. Only can use adapter as below:
Adapter Model: HYX024-U012125XYE
Input: 100-240VAC, 50/60Hz,0.5A;
Output: 5VDC1.67A; 9VDC1.67A

SHENZHEN SHI HE YIXUN SCIENCE AND TECHNOLOGY CO.,LTD
The plug considered as disconnect device of adapter.
This product is intended for sale and application in a business environment.
RED Article 10 2
-This product can be used across EU member states



RED Article 10 10

The device is restricted to indoor use only when operating in the 5150 to 5350 MHz frequency range.

The RF distance between body and product is 0mm
2G
Frequency Range:
GSM900: Tx: 880-915MHz, Rx: 925-960MHz
DCS1800: Tx: 1710-1785MHz, Rx: 1805-1880MHz
RF Output Power:
GSM900: 33.0dBm, GSM1800: 30.10dBm
EDGE900: 27.74dBm, EDGE1800: 25.34dBm

4G
Frequency Range:
FDD-LTE Band 1: Tx: 1920-1980MHz, Rx: 2110-2170MHz
FDD-LTE Band 3: Tx: 1710-1785MHz, Rx: 1805-1880MHz
FDD-LTE Band 7: Tx: 2500-2570MHz, Rx: 2620-2690MHz
FDD-LTE Band 8: Tx: 880-915MHz, Rx: 925-960MHz
TDD-LTE Band 38: Tx: 2570-2620MHz, Rx: 2570-2620MHz
TDD-LTE Band 40: Tx: 2300-2400MHz, Rx: 2300-2400MHz

Max.RF Output Power:
FDD-LTE Band 1: 24.08dBm, FDD-LTE Band 3: 24.83dBm,
FDD-LTE Band 7: 25.24dBm, FDD-LTE Band 8: 24.72dBm,
TDD-LTE Band 38: 24.99dBm, TDD-LTE Band 40: 25.12dBm

Wi-Fi (5GHz)
Operation Frequency:
Band 1: 5150-5250MHz, Band 2: 5250-5350MHz,
Band 3: 5470-5725MHz
RF Output Power: Max. 18.03dBm (EIRP)

Wi-Fi (5.8GHz)
Operation Frequency: 5745-5825MHz
RF Output Power: Max. 13.88dBm (EIRP)

Bluetooth
Bluetooth Version: Bluetooth V5.0
Frequency Range: 2402MHz-2480MHz
Max.RF Output Power:8.42dBm (EIRP)

Wi-Fi (2.4GHz)
Frequency Range:
2412-2472MHz for 802.11b/g/n(HT20);
2422-2462MHz for 802.11n(HT40)
Max.RF Output Power: 15.07dBm (EIRP)

NFC
Frequency Range: 13.56MHz
Radiated H-Field: 9.66dBuA/m(@3m)

GPS
Frequency Range:1575.42MHz Receiving

FM
Frequency Range: 87.5~108.0MHz Receiving