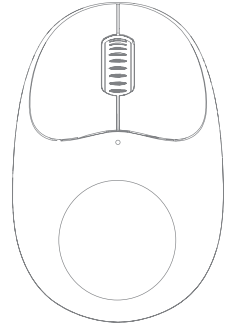


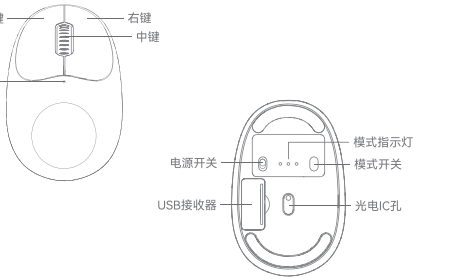
QS-MS02 迪士尼系列双模无线鼠标
使用说明书



包装清单



产品示意图



温馨提示

- 1、除说明书有特殊标示的操作方式以外，请勿尝试拆卸或更换产品内的任何零件。
- 2、请勿将产品放入水或其他任何液体中，此产品非防水设计。
- 3、如果有任何液体不小心进入产品内时，请立即断开连接并移开此产品。
- 4、为避免触电，请在安装或卸载产品时，确保手上没有沾水。
- 5、请勿将此产品放置于热源附近或直接暴露在火源附近。
- 6、请勿将本产品放置在有强大电磁力的环境中，否则会导致产品故障。

产品规格

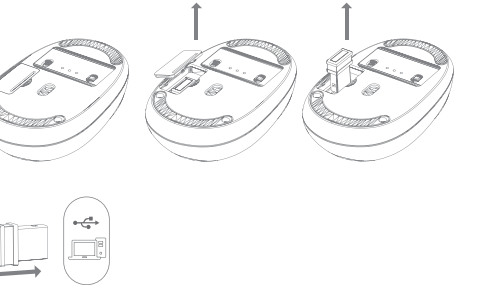
模式	2.4G+BT5.0
工作距离	10M
电池容量	300mAh/3.7V
电池电压	3.7V
充电电压	4.2V
充电电流	1A MAX
充电时间	90min
DPI	1200
回报率	125Hz
鼠标尺寸	96*62.75*34.56mm

系统支持

鼠标支持与安装了 Windows 8 及以上版本的 Windows OS，Mac OS 10.10 及以上操作系统与 Google Chrome OS 的电脑配对。

USB 接收器安装

- 沿着底部打开 USB 仓，取出 USB 接收器，最后将接收器插入电脑 USB 接口。



鼠标模式说明

模式指示灯		
● 2.4G 绿灯	● BT1 蓝灯	● BT2 蓝灯

- 2.4G 模式：
将 USB 接收器插入电脑，短按模式开关按钮，将模式开关切换到 2.4G 档位即可直接使用，出厂默认 2.4G 模式。

- 2.4G 强对码模式：
长按模式开关按键 3 秒以上，鼠标将进入强对码模式，此时插入 USB 接收器，即可完成连接。

- 蓝牙模式：
1. 短按模式开关按钮切换至 BT1 或 BT2 模式，然后长按模式开关按键 3 秒以上，鼠标将进入配对模式。
2. 随后在电脑桌面底部打开蓝牙图标，点击添加蓝牙设备，搜索对应的鼠标设备名称，当出现后直接点击配对，当显示已连接就可以开始使用鼠标。

鼠标名称描述

- 蓝牙 5.0 名称：Disney BT5.0 Mouse

电量指示

- 电量低：闪红灯
- 充电中：绿灯常亮
- 充满电：绿灯熄灭

产品中有害物质名称及含量

部件名称	有害物质					
	铅(Pb)	汞(Hg)	镉(Cd)	六价铬(Cr(VI))	多溴联苯(PBB)	多溴二苯醚(PBDE)
印刷电路组件	○	○	○	○	○	○
外壳等小结构件	○	○	○	○	○	○
本表格依据SJ/T11364的规定编制 O:表示该有害物质在该部件所有均质材料中的含量均在GB/T26572规定限量要求以下。 X:表示该有害物质至少在该部件的某一均质材料中的含量超出GB26572规定的限量要求。 表单标记“X”的部件,皆因全球技术发展水平限制而无法实现有害物质的替代。						
本表格依据SJ/T11364的规定编制 印刷电路板组件*:包括印刷电路板及其零部件,电子元器件等,根据产品型号不同,您所购买的产品可能不会含有以上所有部件						
	在中华人民共和国境内销售的电子电气产品必须标识此标志,标志内的数字代表在正常的使用状态下的产品的环保使用期限。					

合格证

产品编号: _____
生产日期: _____
检 验 员: _____

保修声明

免责声明
本使用手册没有任何形式的担保、立场表达或其他暗示，本使用手册所提到的产品、规格及信息仅供参考，内容亦会随时更新于网页，恕不另行通知。

保修声明：
就本文件随附的产品做如下保证：如产品在您购买日起十二（12）个月（“保修期”）内，在正常使用情况下因质量瑕疵发生损坏，能修理的，免费修理；经厂家确认无法修理的，免费更换；修理或更换后的产品，在剩余保修期（最短不少于30天）内继续享有保修。购买日以销售发票日期为准；如无法确定购买日，则保修期自产品生产日期起按十三（13）个月计算。

如申请保修，请先致电产品服务热线，并按我们指示的方式执行。申请保修时，您需要提供准确、完整和清晰填写的有效销售发票。以上保证不适用于下列情况：

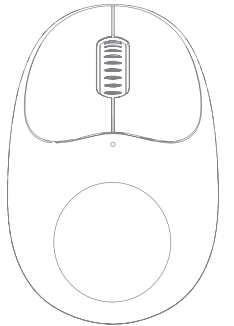
- 1.超过三包有效期的；
 - 2.涂改保修卡、产品编码与产品本体不符；
 - 3.因误用、滥用或不适当的运输、使用、维护或保管而导致的故障或损坏；
 - 4.因不可抗力（如地震、战争、火灾等）或意外导致的故障或损坏；
 - 5.拉链、塔扣因受力过大而损坏；
 - 6.因承载过重造成的脱线或撕裂；
 - 7.任何因尖锐物体造成的损坏；
 - 8.有烧损或水浸迹象的产品；
 - 9.因擅自拆改导致的损坏；
 - 10.产品正常使用过程中发生的老化、脱色、磨损、破裂和其他损耗。
 - 11.如产品原有标识标签被更改或损毁，本保证将失效。
- 产品及随附物料的齐备和外观完好不属于保证范围，您应在接收产品时当场检验并对任何不符提出异议。

以上保证是我们就产品做出的全部保证，且仅在中国大陆地区境内适用。本文件的任何内容均不影响根据法律规定不能排除或限制的消费者权利。

服务监督热线:400-885-8808



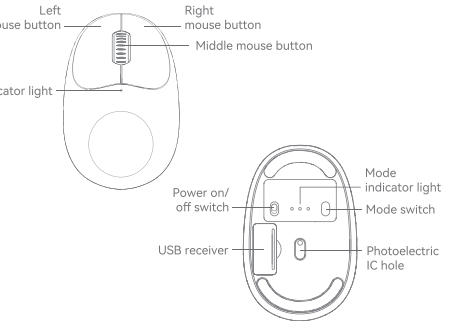
QS-MS02 Disney Series Dual-Mode Wireless Mouse
Instruction Manual



Packing List



Product diagram



Kindly reminder

1. Do not attempt to disassemble or replace any parts of the product except for those operations specifically indicated in the instruction manual.
2. Do not put the product into water or any other liquid, this product is not waterproof design.
3. If any liquid accidentally enters the product, please disconnect and remove the product immediately.
4. To avoid electric shock, please make sure there is no water on your hands when installing or uninstalling the product.
5. Do not place this product near a heat source or expose it directly to a fire source.
6. Do not place this product in an environment with strong electromagnetic force, as this may cause the product to malfunction.

Product Specification

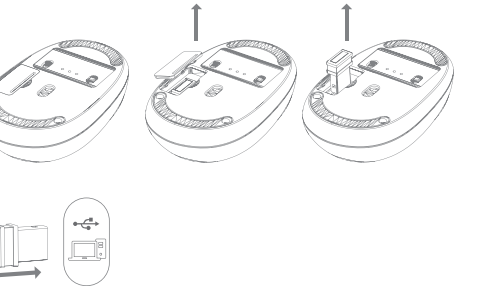
Mode	2.4G+BT5.0
Working distance	10M
Battery capacity	300mAh/3.7V
Battery Voltage	3.7V
Charging Voltage	4.2V
Charging Current	1A MAX
Charging time	90min
DPI	1200
Return rate	125Hz
Mouse Size	96*62.75*34.56mm

System Support

The mouse supports pairing with computers with Windows OS 8 and above, Mac OS 10.10 and above and Google Chrome OS installed.

USB receiver installation

- Open the USB compartment along the bottom, remove the USB receiver, and finally plug the receiver into your computer's USB port.



Mouse mode description

- Mode Indicator**
- 2.4G green light
 - BT1 blue light
 - BT2 blue light

- 2.4G mode:
Plug the USB receiver into the computer, short press the mode switch button, switch the mode switch to 2.4G gear can be used directly, factory default 2.4G mode.

- 2.4G strong pairing mode:
Long press the mode switch button for more than 3 seconds, the mouse will enter the strong pair code mode, at this time, insert the USB receiver to complete the connection.

- BT mode:
1. Short press the mode switch button to switch to BT1 or BT2 mode, then long press the mode switch button for more than 3 seconds, the mouse will enter pairing mode.
2. Then open the Bluetooth icon at the bottom of the computer desktop, click Add Bluetooth Device, search for the corresponding mouse device name, when it appears, click Pairing, and when it shows connected, you can start to use the mouse.

Mouse Name Description

- BT 5.0 Name: Disney BT5.0 Mouse

Battery Indicator

- Low battery: flashing red light
- Charging: green light always on
- Fully charged: green light off

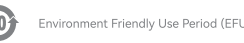
Names and contents of hazardous substances in products

Name of the Parts	Hazardous Substances					
	Pb	Hg	Cd	Cr(VI)	PBB	PBDE
Housing	○	○	○	○	○	○
PCBA	×	○	○	○	○	○
Accessories	×	○	○	○	○	○

This table is compiled according to SJ/T 11364.

: Indicates that this hazardous substance contained in all of the homogeneous materials for this part is below the limit requirement in GB/T 26572

: Indicates that this hazardous substance contained in at least one of the homogeneous materials used for this part is the limit requirement in GB/T 26572.



This logo refers to the period (10 years) during which the hazardous substances in electronic and electrical products will not leak or mutate so that the use of these result in any severe environmental pollution, any bodily injury [substances] will not or damage to any assets.



Warranty statement

Disclaimer
This user manual does not have any form of guarantee, position expression or other implication. The mentioned products, specifications and information are for reference only, and the content will also be updated on the web at any time without additional separate notice.

Warranty statement:
The product attached to this document is guaranteed as follows: If the product is twelve (12) months from the date of purchase ("Warranty Period"), under normal conditions of use due to quality defects damaged, can be repaired. Free repair; free replacement if the manufacturer confirms that it cannot be repaired; repaired or replaced product. Continue to enjoy the warranty during the remaining warranty period (the shortest not less than 30 days). Purchased by sale the ticket date shall prevail; if the purchase date cannot be determined, the warranty period shall be 13 (13) months. If you apply for a warranty, please call the product service hotline first and execute it in the manner instructed by us. When applying for warranty, you need to provide an accurate, complete and clearly filled out valid sales invoice.

The above guarantee does not apply to the following situations:
1. Exceeding the validity period of the three packs;
2. Altering the warranty card and product code does not match the product body;
3. Causes caused by misuse, abuse or improper transportation, use, maintenance or storage obstacles or damage;
4. Failure or damage caused by force majeure (such as earthquake, war, disaster, etc.) or accident bad;
5. The zipper and tower buckle are damaged due to excessive force;
6. Disconnection or tearing caused by excessive load;
7. Any damage caused by sharp objects;
8. Products with signs of burning or flooding;
9. Damage caused by unauthorized disassembly;
10. Aging, discoloration, abrasion, rupture and other losses that occur during the normal use of the product.
11. If the original identification label of the product is changed or damaged, this guarantee will become invalid.

The completeness and appearance of the product and accompanying materials are not within the scope of the guarantee. You should check on the spot and raise objections to any discrepancies.

The above guarantees are all guarantees we make regarding the products, and are only applicable in mainland China. Nothing in this document affects consumer rights that cannot be excluded or restricted under the law profit.

Service supervision hotline: 400-885-8808



FCC Warning:

This equipment has been tested and found to comply with the limits for a Class B digital device, pursuant to part 15 of the FCC Rules. These limits are designed to provide reasonable protection against harmful interference in a residential installation. This equipment generates, uses and can radiate radio frequency energy and, if not installed and used in accordance with the instructions, may cause harmful interference to radio communications. However, there is no guarantee that interference will not occur in a particular installation. If this equipment does cause harmful interference to radio or television reception, which can be determined by turning the equipment off and on, the user is encouraged to try to correct the interference by one or more of the following measures:

- Reorient or relocate the receiving antenna.
- Increase the separation between the equipment and receiver.
- Connect the equipment into an outlet on a circuit different from that to which the receiver is connected.
- Consult the dealer or an experienced radio/TV technician for help.

Caution: Any changes or modifications to this device not explicitly approved by manufacturer could void your authority to operate this equipment.

This device complies with part 15 of the FCC Rules. Operation is subject to the following two conditions:

(1) This device may not cause harmful interference, and (2) this device must accept any interference received, including interference that may cause undesired operation.

This equipment complies with FCC radiation exposure limits set forth for an uncontrolled environment. This equipment should be installed and operated with minimum distance 0cm between the radiator and your body.