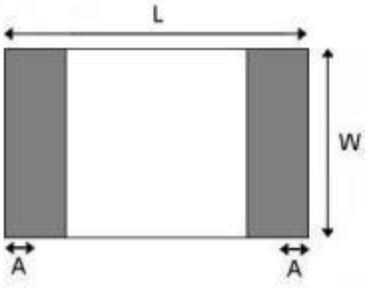


4. SHAPE AND DIMENSIONS:



SHAPE AND DIMENSIONS

微波元件陶瓷天线

Microwave element ceramic antenna

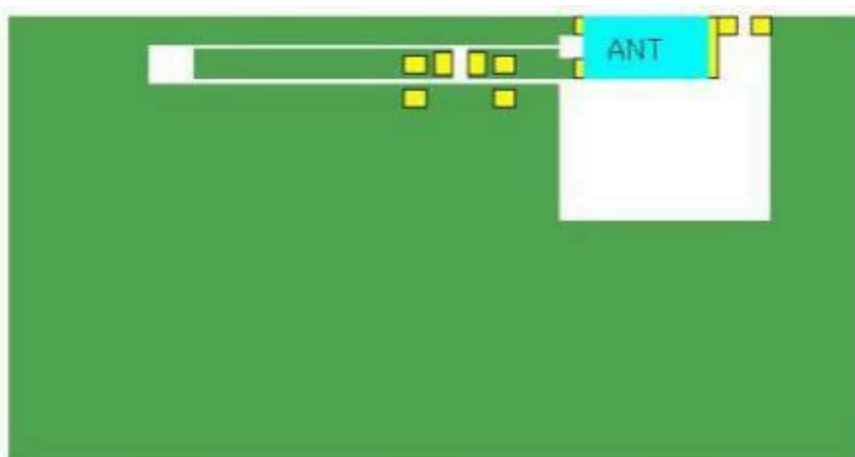
中国振华集团云科电子有限公司广东分公司

China Zhenhua Group Yunke Electronics Co., LTD. Guangdong branch

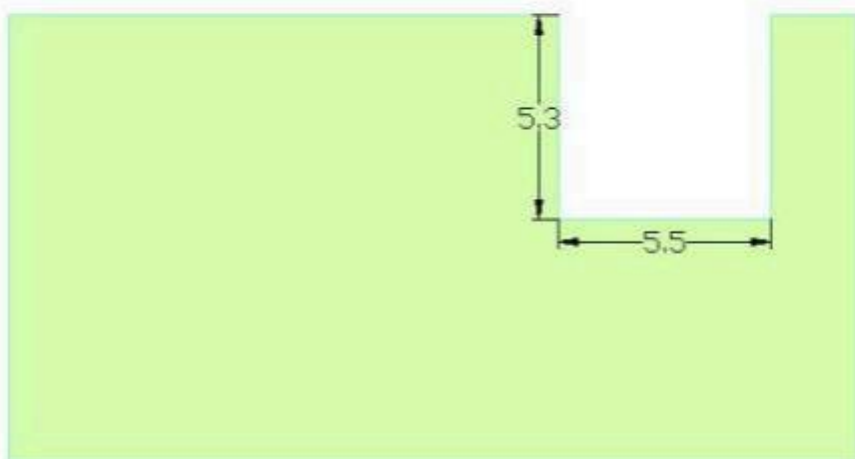
Style	L	W	C	d	t
2012	2.00±0.10	1.2±0.10	0.40±0.20	0.40±0.20	0.50±0.10
3216	3.10±0.10	1.55±0.10	0.50±0.30	0.40±0.20	0.50±0.10

测试板参考尺寸:

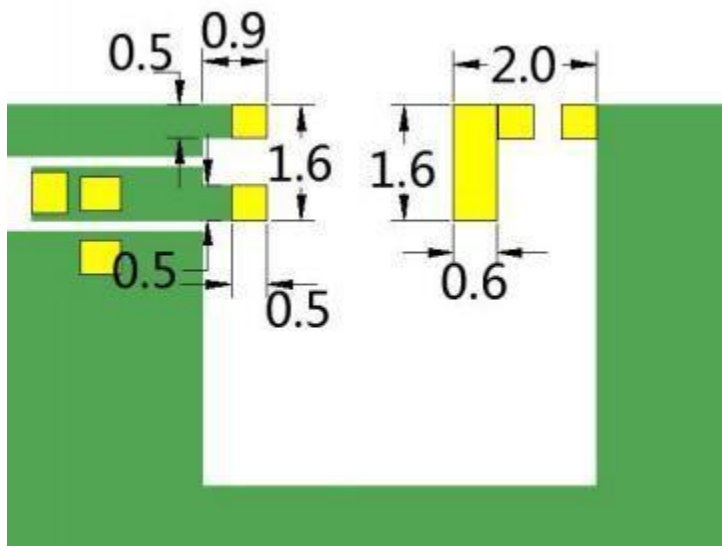
单位: mm



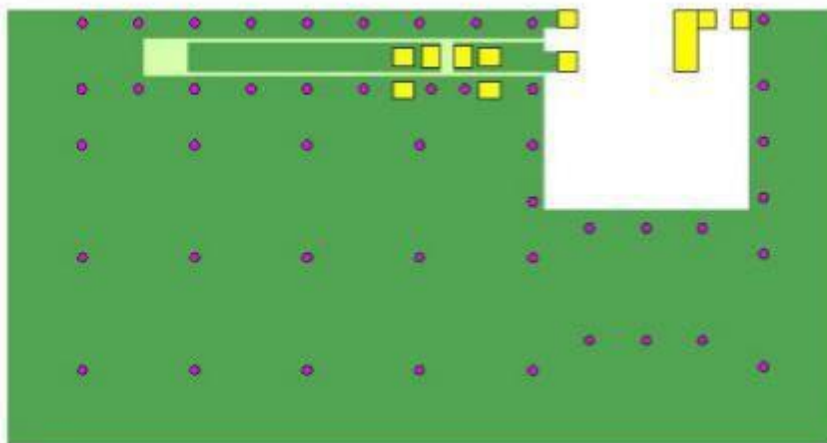
- 天线
- PAD
- 底层铜箔
- 顶层铜箔



微波元件陶瓷天线
中国振华集团云科电子有限公司广东分公司

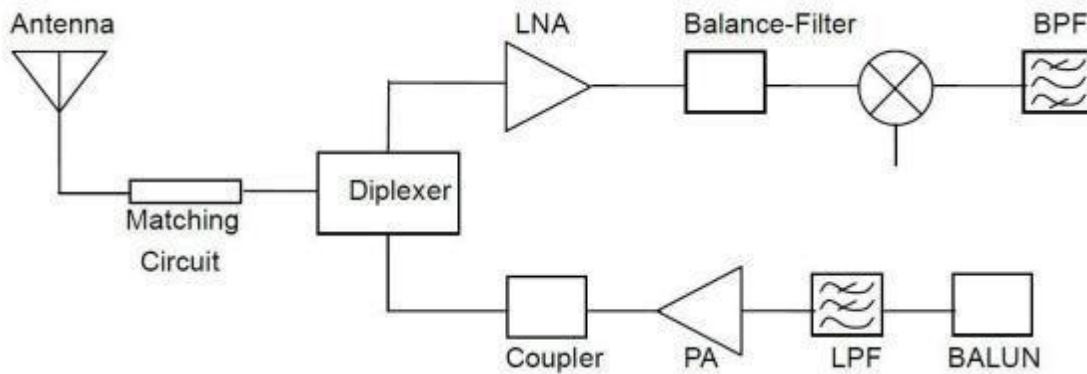


打孔参考示意图



- 天线
- PAD
- 底层铜箔
- 顶层铜箔
- 打孔

微波元件陶瓷天线
中国振华集团云科电子有限公司广东分公司



5. SPECIFICATIONS:

测试项 Test items	规格 specification
带宽 Frequency	2400-2500MHz
极化方式 Polarization	线极化 Linear polarization
*最大增益 Max Gain	2.67dBi
*效率 efficiency	72.30%
输入阻抗 Input impedance	50Ω

* Test condition: Test board size 90*40 mm
 Matching circuit: Pi matching circuit will be required

6. Electrical Characteristics :

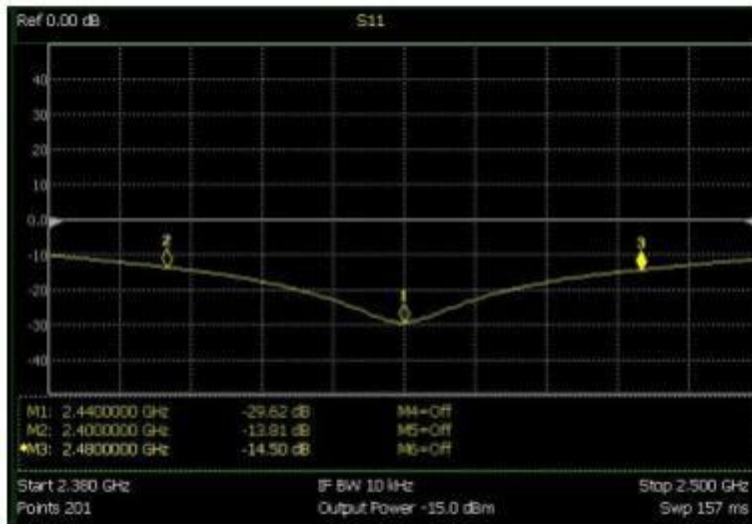
回波损耗 Return loss

微波元件陶瓷天线

Microwave element ceramic antenna

中国振华集团云科电子有限公司广东分公司

China Zhenhua Group Yunke Electronics Co., LTD. Guangdong branch



驻波比



Mark	Frequency	VSWR
1	2400 MHz	1.513
2	2420 MHz	1.068
3	2480 MHz	1.464

Radiation Pattern

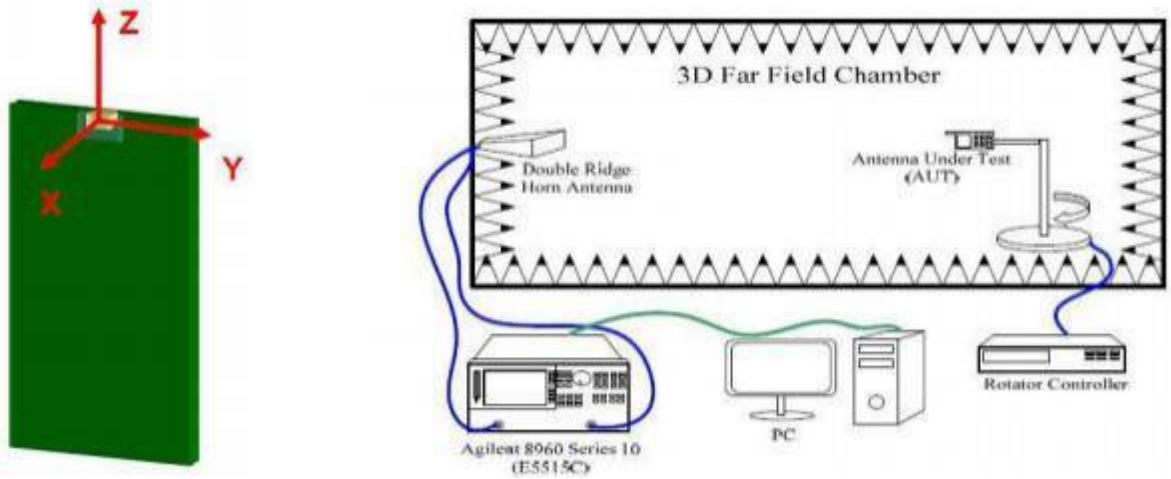
The Gain pattern is measured in FAR-field chamber. DUT is placed on the table of rotator, a standard horn antenna and Vector Network Analyzer is used to collect data.

微波元件陶瓷天线

Microwave element ceramic antenna

中国振华集团云科电子有限公司广东分公司

China Zhenhua Group Yunke Electronics Co., LTD. Guangdong branch



● 效率



● 最大增益



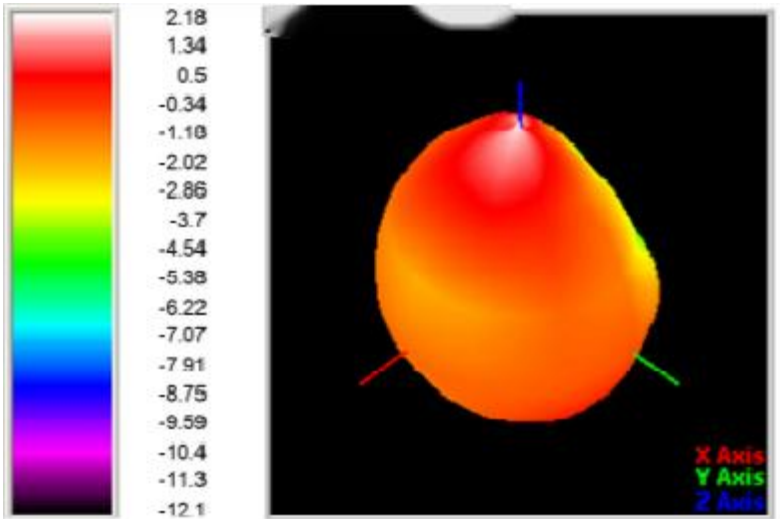
微波元件陶瓷天线

Microwave element ceramic antenna

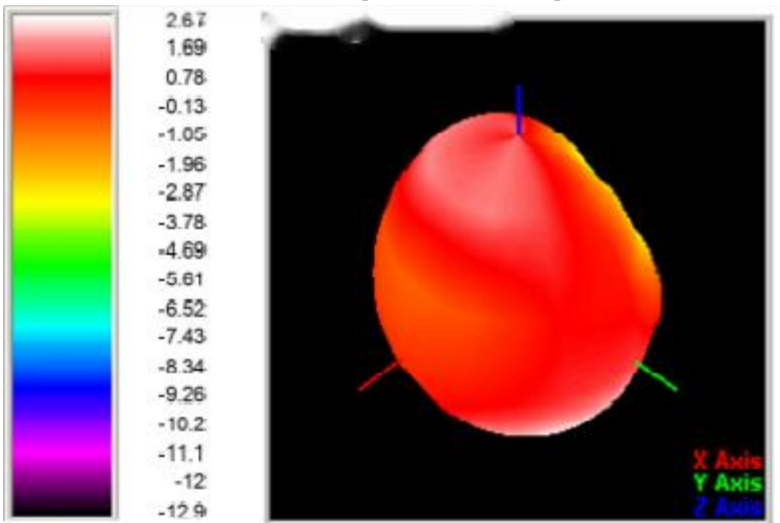
中国振华集团云科电子有限公司广东分公司

China Zhenhua Group Yunke Electronics Co., LTD. Guangdong branch

- **3D Gain Pattern (2400 MHz)**



- **3D Gain Pattern (2420 MHz)**



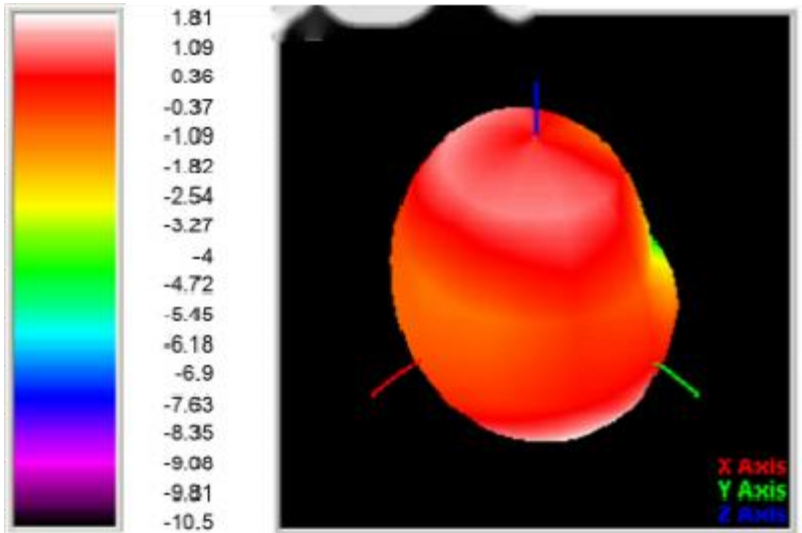
- **3D Gain Pattern (2480 MHz)**

微波元件陶瓷天线

Microwave element ceramic antenna

中国振华集团云科电子有限公司广东分公司

China Zhenhua Group Yunke Electronics Co., LTD. Guangdong branch



7. Environmental Characteristics

(1) Reliability Test

Item	Condition	Specification
Thermal shock	1. 30 ± 3 minutes at $-40^{\circ} \text{C} \pm 5^{\circ} \text{C}$, 2. Convert to $+105^{\circ} \text{C}$ (5 minutes) 3. 30 ± 3 minutes at $+105^{\circ} \text{C} \pm 5^{\circ} \text{C}$, 4. Convert to -40°C (5 minutes) 5. Total 100 continuous cycles	No apparent damage Fulfill the electrical spec. after test.
Humidity resistance	1. Humidity: 85% R.H. 2. Temperature: $85 \pm 5^{\circ} \text{C}$ 3. Time: 1000 hours.	No apparent damage Fulfill the electrical spec. after test.
High temperature resistance	1. Temperature: $150^{\circ} \text{C} \pm 5^{\circ} \text{C}$ 2. Time: 1000 hours.	No apparent damage Fulfill the electrical spec. after test.
Low temperature resistance	1. Temperature: $-40^{\circ} \text{C} \pm 5^{\circ} \text{C}$ 2. Time: 1000 hours.	No apparent damage Fulfill the electrical spec. after test.
Soldering heat resistance	1. Solder bath temperature : $260 \pm 5^{\circ} \text{C}$ 2. Bathing time: 10 ± 1 seconds	No apparent damage
Solderability	The dipped surface of the terminal shall be at least 95% covered with solder after dipped in solder bath of $245 \pm 5^{\circ} \text{C}$ for 3 ± 1 seconds.	No apparent damage

(2) Storage Condition

(a) At warehouse:

The temperature should be within $0 \sim 30^{\circ} \text{C}$ and humidity should be less than 60% RH.

微波元件陶瓷天线

Microwave element ceramic antenna

中国振华集团云科电子有限公司广东分公司

China Zhenhua Group Yunke Electronics Co., LTD. Guangdong branch

The product should be used within 1 year from the time of delivery.

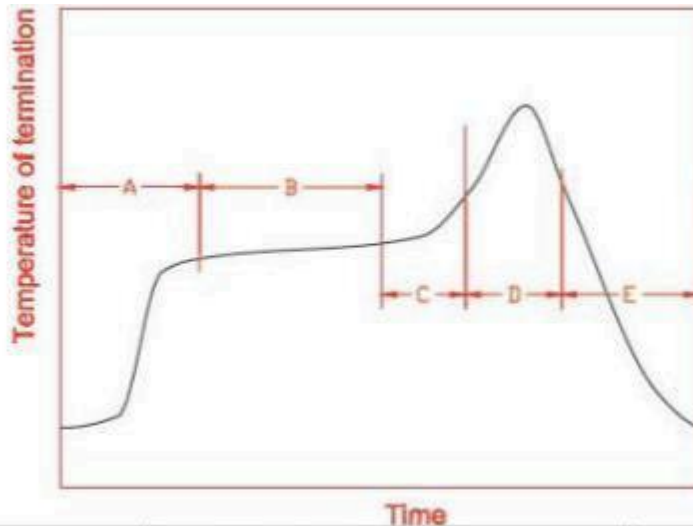
(b) On board:

The temperature should be within $-40\sim 85^{\circ}\text{C}$ and humidity should be less than 85% RH.

(3) Operating Temperature Range

Operating temperature range : -40°C to $+105^{\circ}\text{C}$.

8. Recommended Reflow Soldering



Phase	Description	Temperature Range	Time
A	1 st rising temperature	The normal to Preheating temperature	30s to 60s
B	Preheating	140°C to 160°C	60s to 120s
C	2 nd rising temperature	Preheating to 200°C	20s to 40s
D	Main heating	if 220°C	50s~60s
		if 230°C	40s~50s
		if 240°C	30s~40s
		if 250°C	20s~40s
		if 260°C	20s~40s
E	Regular cooling	200°C to 100°C	1°C/s ~ 4°C/s

*reference: J-STD-020C

(1) Soldering Gun Procedure

Note the follows, in case of using solder gun for replacement.

(a) The tip temperature must be less than 350°C for the period within 3 seconds

微波元件陶瓷天线

Microwave element ceramic antenna

中国振华集团云科电子有限公司广东分公司

China Zhenhua Group Yunke Electronics Co., LTD. Guangdong branch

By using soldering gun under 30 W.

(b) The soldering gun tip shall not touch this product directly.

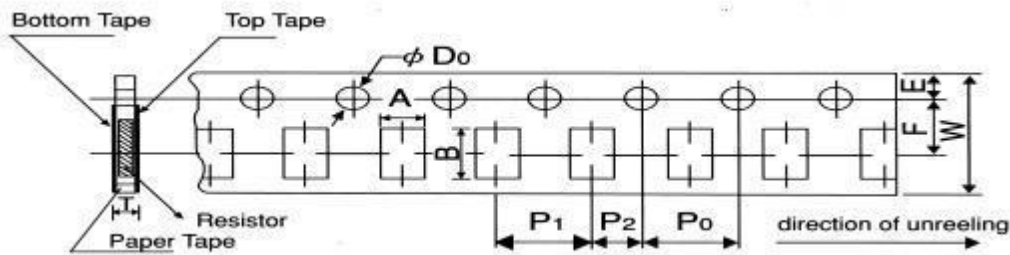
(2) Soldering Volume

Note that excess of soldering volume will easily get crack the body of this product.

9. Taping Package and Label Marking: (unit: mm)

(1) Quantity/Reel: 5000 pcs/Reel

(2) Carrier tape dimensions



Packing	Style	A	B	W	F	E	P ₁	P ₂	P ₀	D ₀	T
Paper	2012	1.6±0.15	2.4±0.2	8.0±0.2	3.5±0.05	1.75±0.1	4.0±0.1	2.0±0.05	4.0±0.1	$\psi 1.5$ +0.1 -0	0.84±0.1
Paper	3216	2.0±0.15	3.6±0.2	8.0±0.2	3.5±0.05	1.75±0.1	4.0±0.1	2.0±0.05	4.0±0.1	$\psi 1.5$ +0.1 -0	0.84±0.1

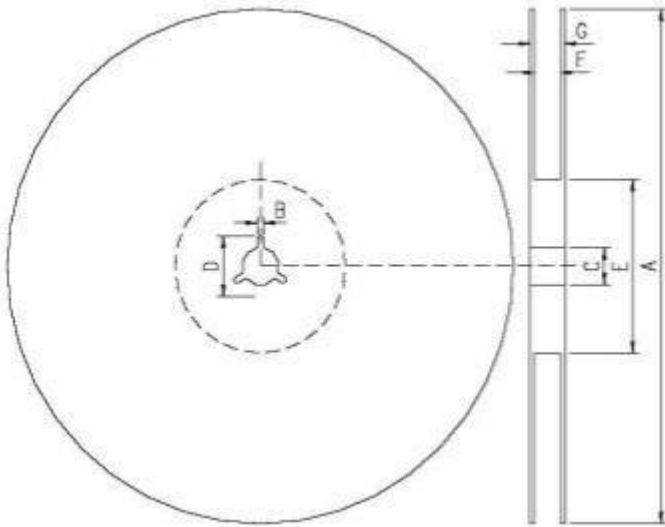
(3) Taping reel dimensions

微波元件陶瓷天线

Microwave element ceramic antenna

中国振华集团云科电子有限公司广东分公司

China Zhenhua Group Yunke Electronics Co., LTD. Guangdong branch



A	178.0±2.0
B	2.0±0.5
C	13.0±0.5
D	21.0±0.8
E	62.0±1.5
F	9.0±0.5
G	13.0±1.0