



18/88 Merrindale Drive Croydon South, Victoria, 3136, Australia
Telephone: +61 3 9761 5888
Facsimile: +61 3 8761 6547
Email: sales@emcbayswater.com.au
ABN: 49 112 221 333

Photograph Annex B:

Internal EUT Photographs

Pertronic Industries Limited

F220-2L	Fire Alarm Panel
F220-FFANN	Local Annunciator
NET2-FFANN	NET2 Annunciator
MPS-PI	Pull Station

F220 Pertronic Fire Alarm System

REPORT: E2405-1792-2 Annex B
DATE: September, 2024

Photographs

Number	Photograph Description
1	EUT – F220-2L Alarm Panel – Internal views
2	
3	
4	
5	
6	
7	
8	
9	
10	
11	
12	
13	
14	
15	
16	
17	
18	
19	
20	
21	
22	
23	
24	
25	
26	
27	
28	
29	
30	
31	
32	
33	
34	
35	
36	
37	
38	
39	
40	
41	
42	
43	
44	
45	
46	
47	
48	
49	
50	
51	

Photograph list continues to next page

Number	Photograph Description
52	EUT – MPS-PI Pull Station – Internal views
53	
54	
55	EUT – NET2-FFANN (NET2 Annunciator) – Internal views
56	
57	
58	
59	
60	EUT – F220-FFANN (Local Annunciator) – Internal views
61	
62	
63	
64	
65	
66	
67	
68	Support Equipment – System Sensor P4RL Sounder+Strober NAC1 Device – Internal views
69	
70	
71	Support Equipment – M501MAP Module – Internal views
72	
73	



Photograph 1



Photograph 2



Photograph 3



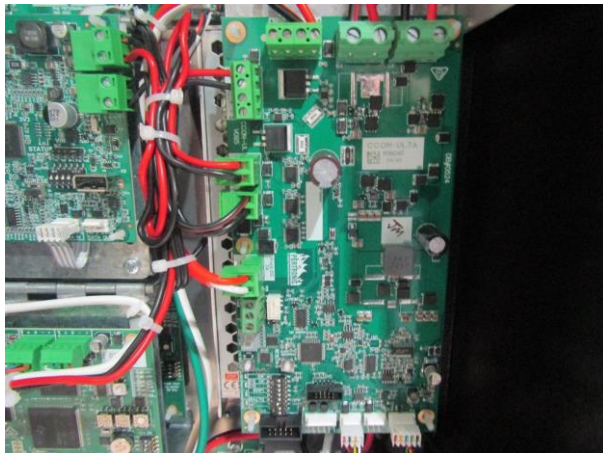
Photograph 4



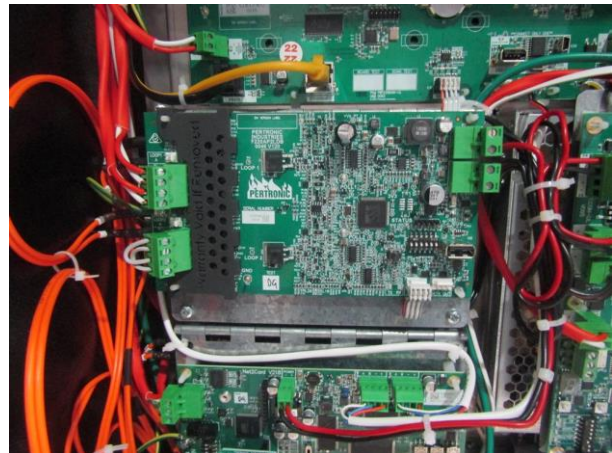
Photograph 5



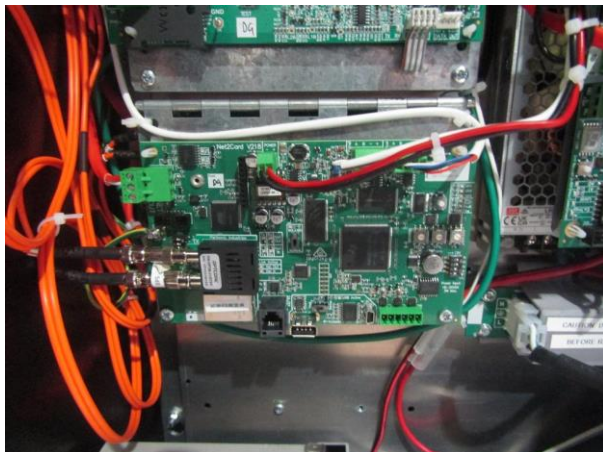
Photograph 6



Photograph 7



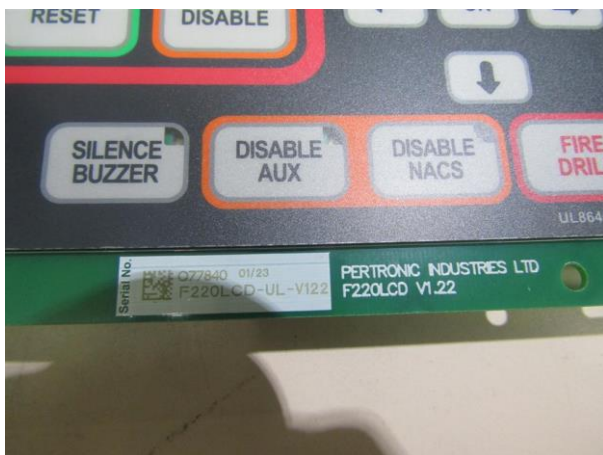
Photograph 8



Photograph 9



Photograph 10



Photograph 11



Photograph 12



Photograph 13



Photograph 14



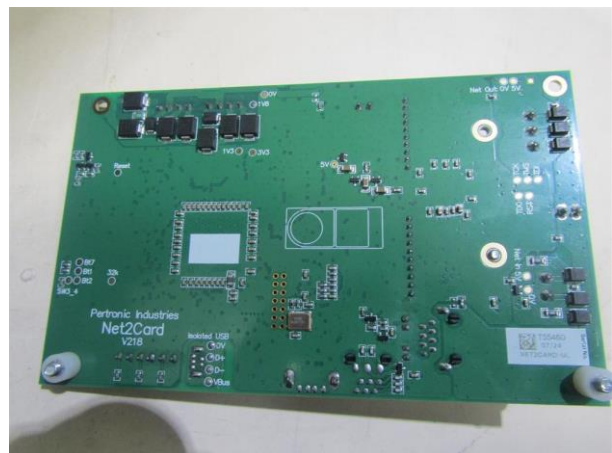
Photograph 15



Photograph 16



Photograph 17



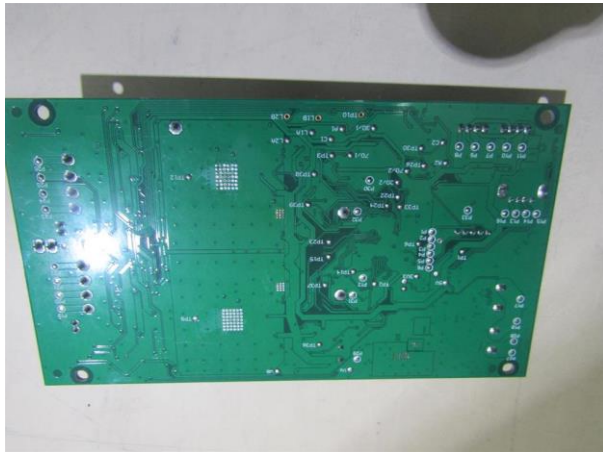
Photograph 18



Photograph 19



Photograph 20



Photograph 21



Photograph 22



Photograph 23



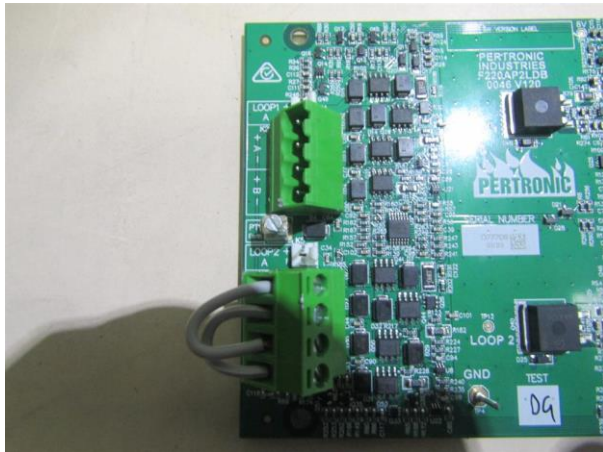
Photograph 24



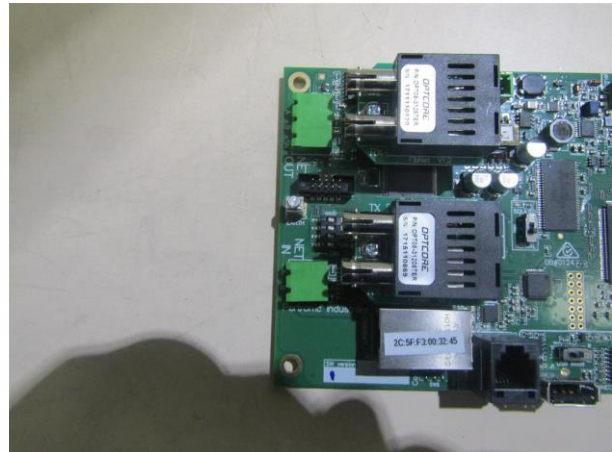
Photograph 25



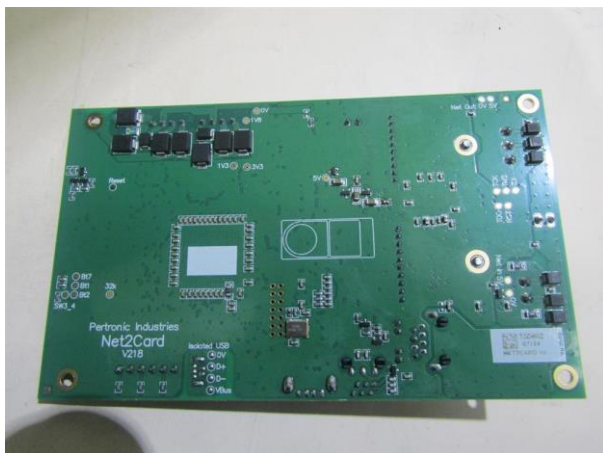
Photograph 26



Photograph 27



Photograph 28



Photograph 29



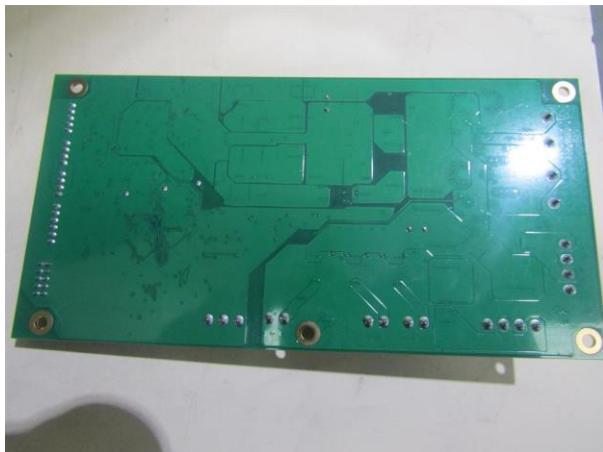
Photograph 30



Photograph 31



Photograph 32



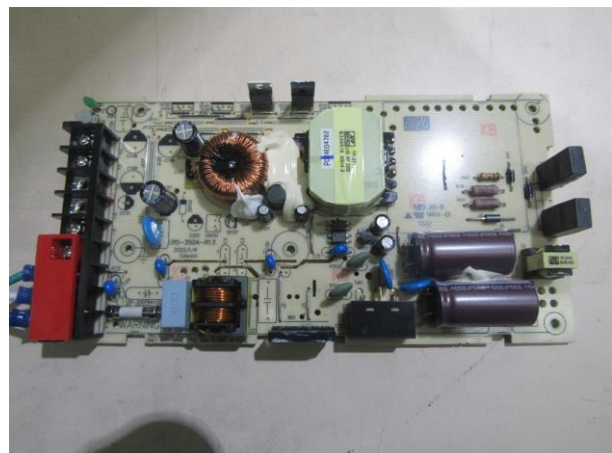
Photograph 33



Photograph 34



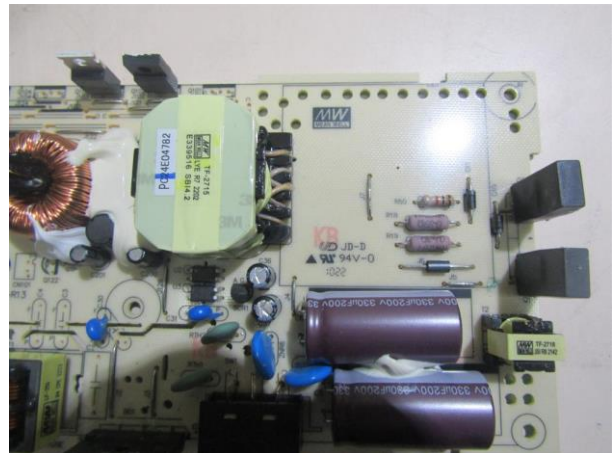
Photograph 35



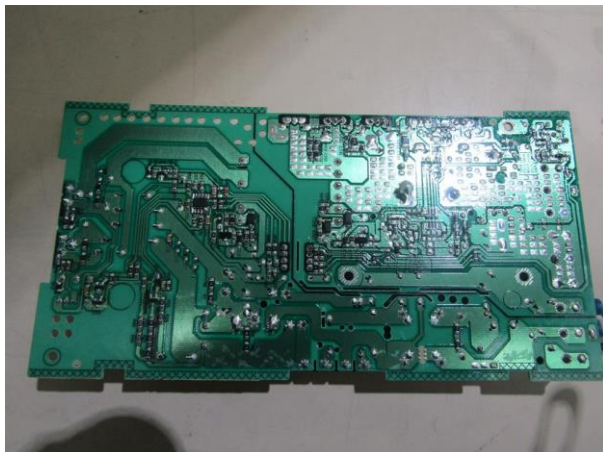
Photograph 36



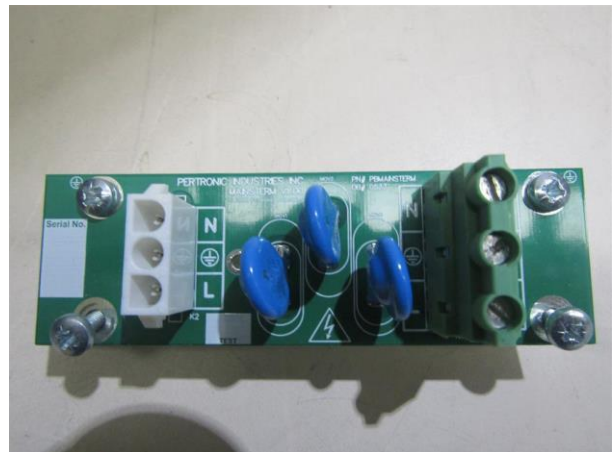
Photograph 37



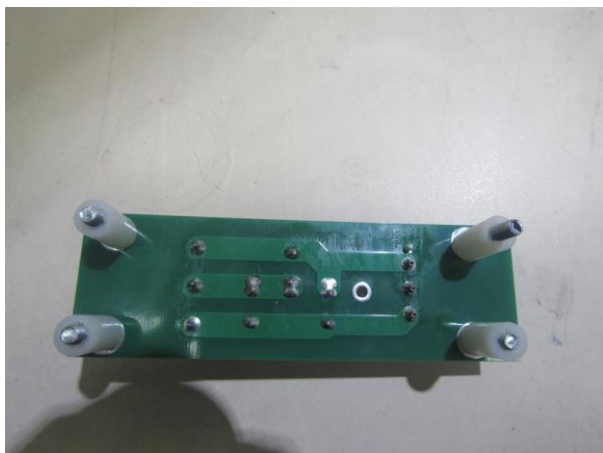
Photograph 38



Photograph 39



Photograph 40



Photograph 41



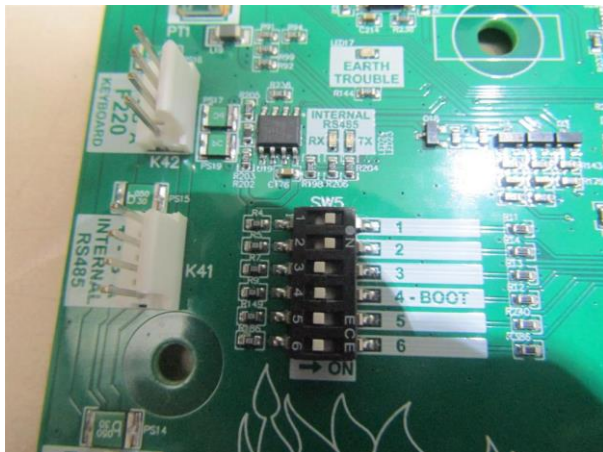
Photograph 42



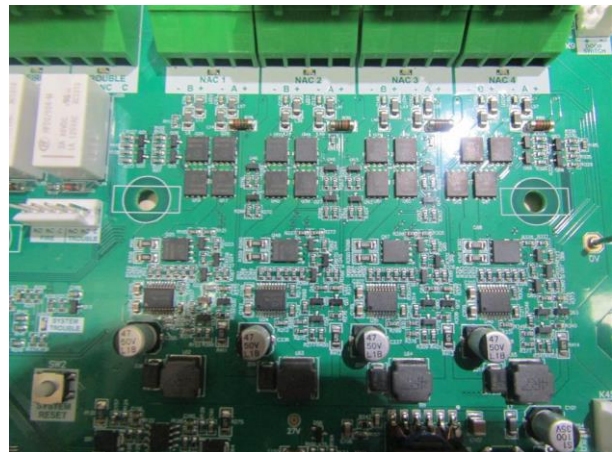
Photograph 43



Photograph 44



Photograph 45



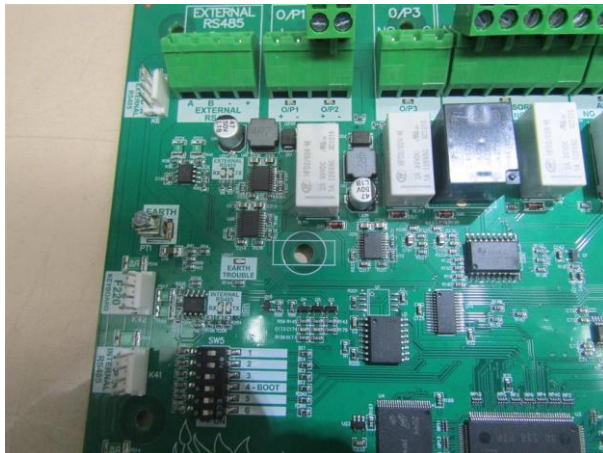
Photograph 46



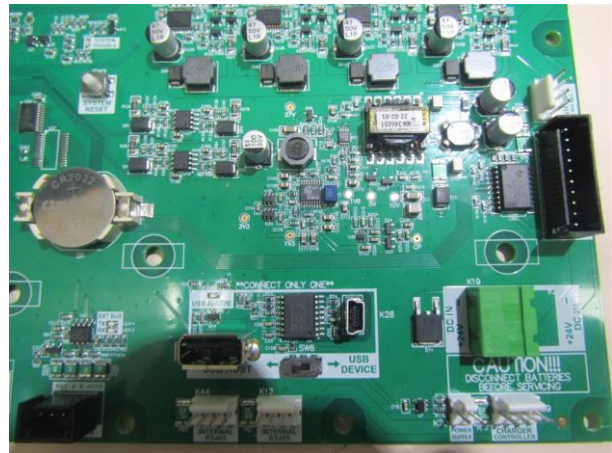
Photograph 47



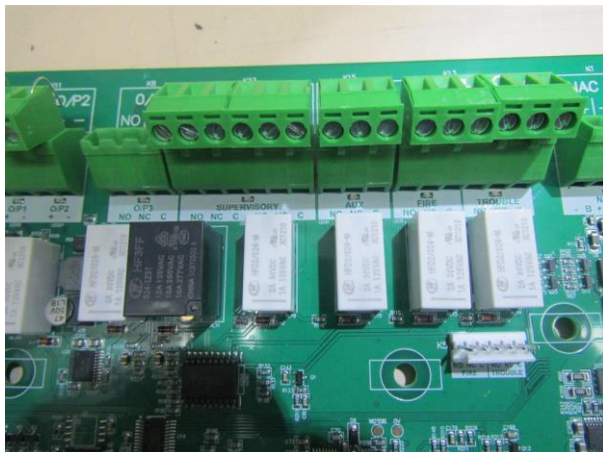
Photograph 48



Photograph 49



Photograph 50



Photograph 51



Photograph 52



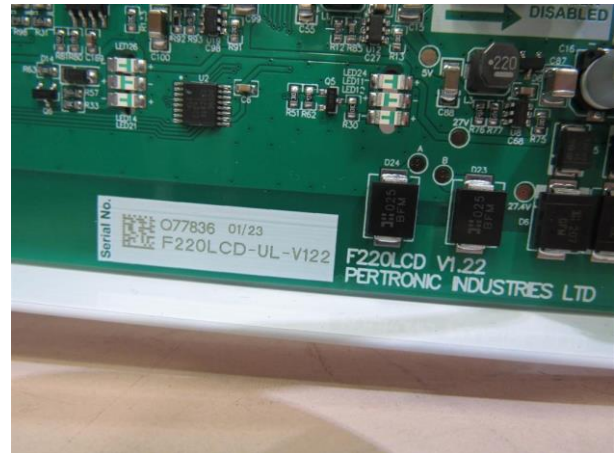
Photograph 53



Photograph 54



Photograph 55



Photograph 56



Photograph 57



Photograph 58



Photograph 59



Photograph 60



Photograph 61



Photograph 62



Photograph 63



Photograph 64



Photograph 65



Photograph 66



Photograph 67



Photograph 68



Photograph 69



Photograph 70



Photograph 71



Photograph 72



Photograph 73