

test report

Shanghai Jesoncom **Communication** Engineering Co.,Ltd

address: Building 2, No.358 Liuyuan Road, Baoshan Industrial Park, Shanghai

pos: 200444

TEL: 021-66276925/29/35

Email: XWZ@shjesoncom.com

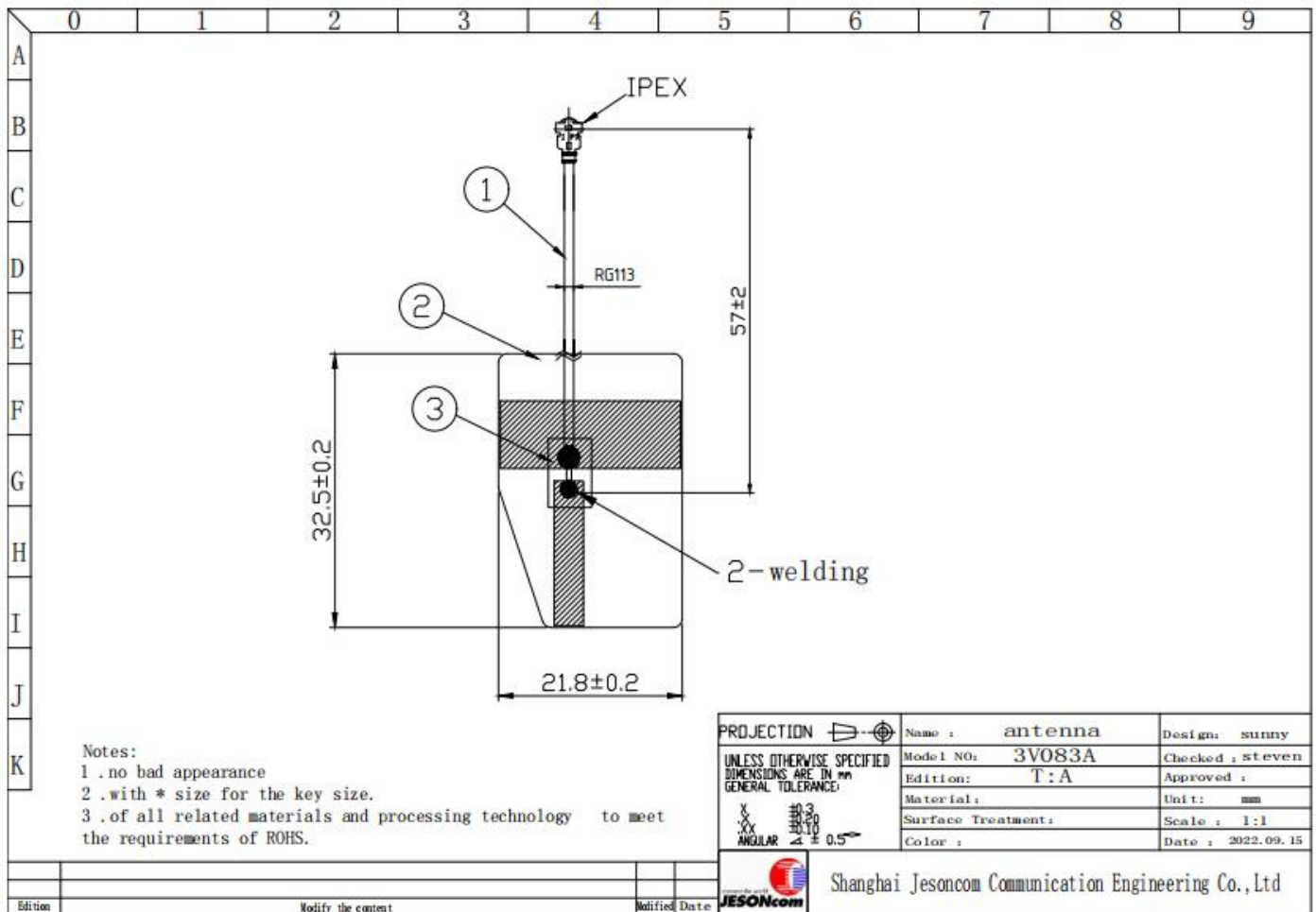
http: www.shjesoncom.com

Customer name	
Several tests	
Test frequency band	2.4G
Test category:	
tester	LDW
testTime	2022.06.23
testing environment	SATIMA SG64
Report version	T: A

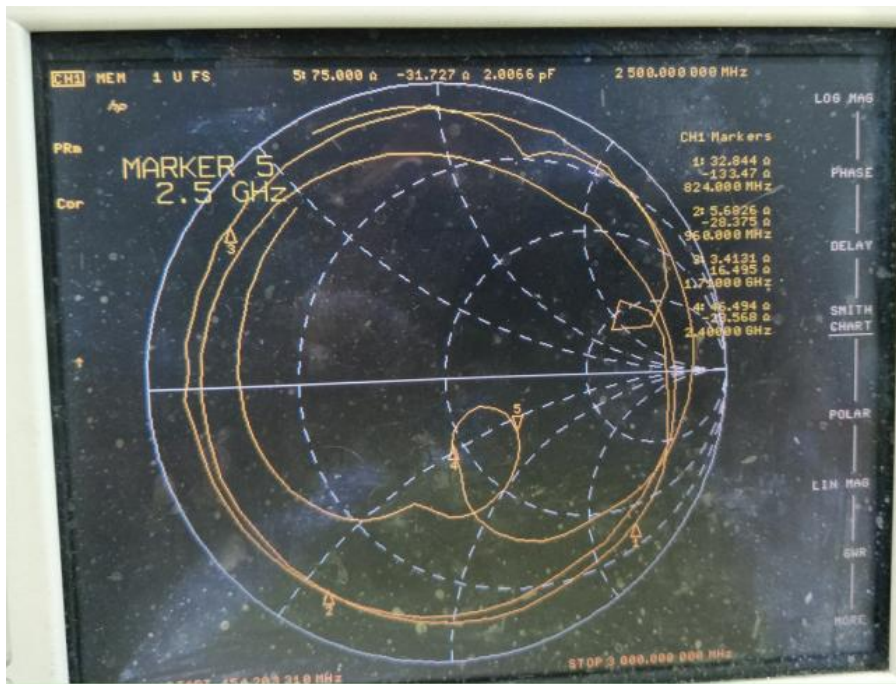
1 Test environment diagram:



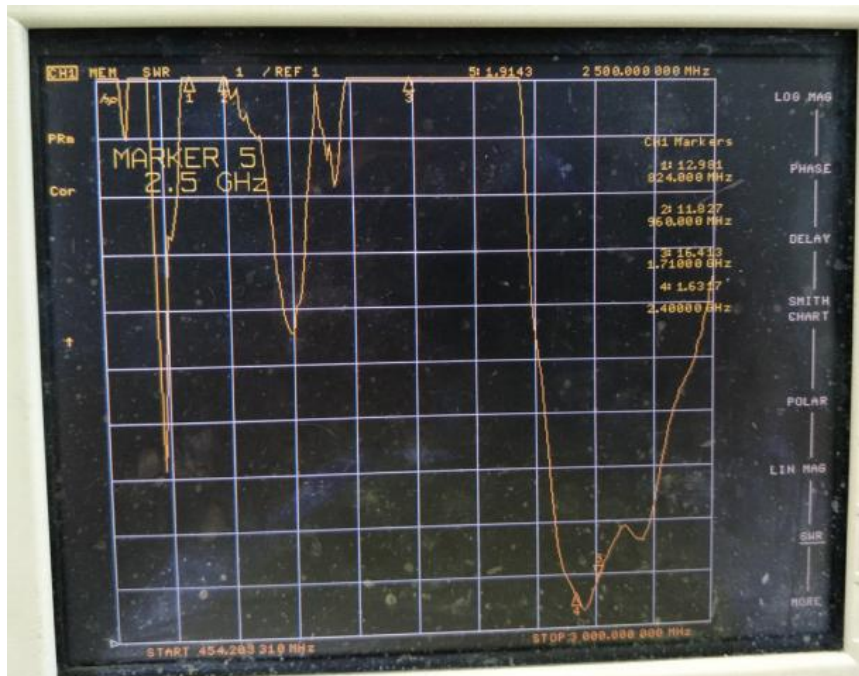
Product picture:



3 Smith



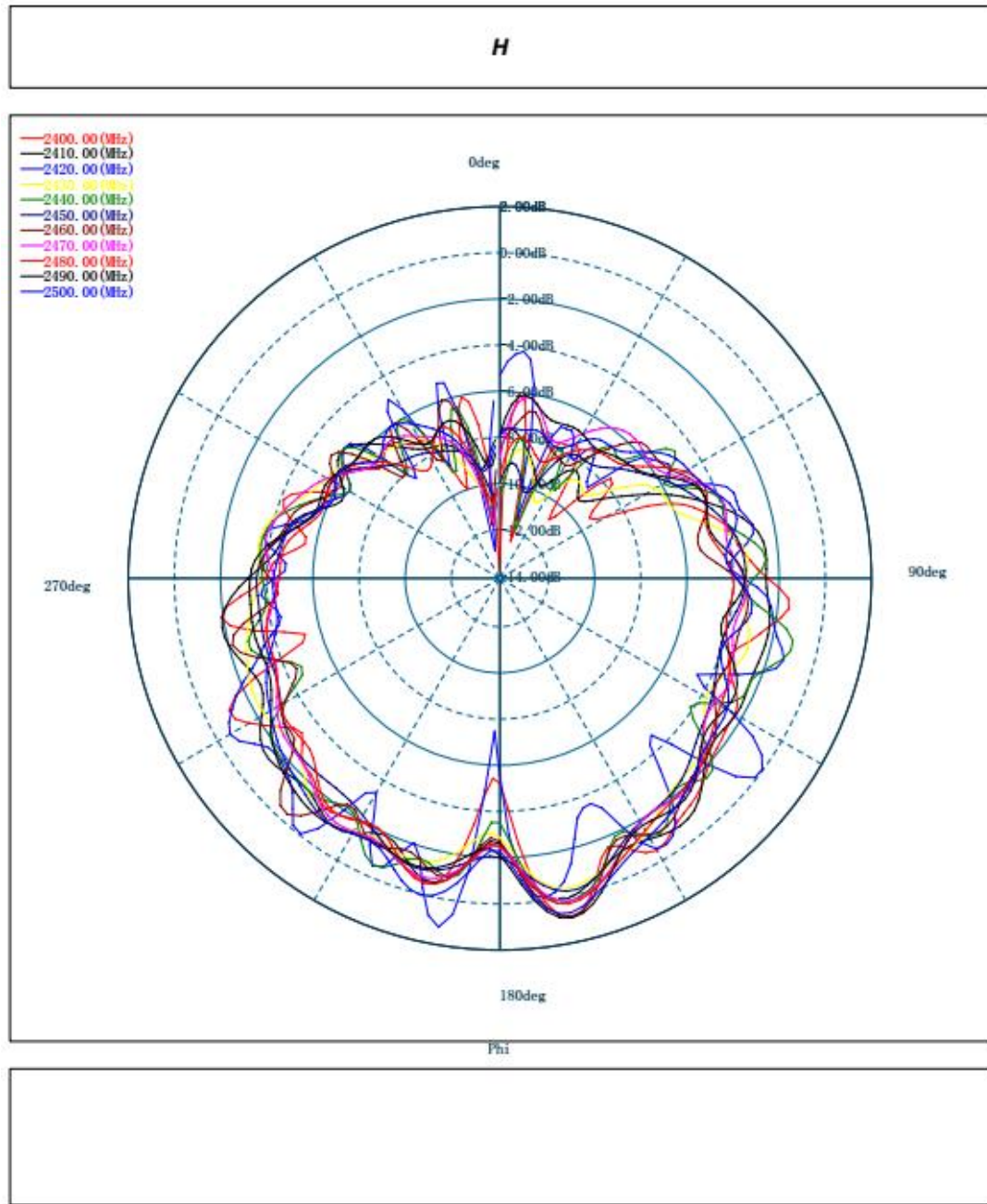
4 VSWR



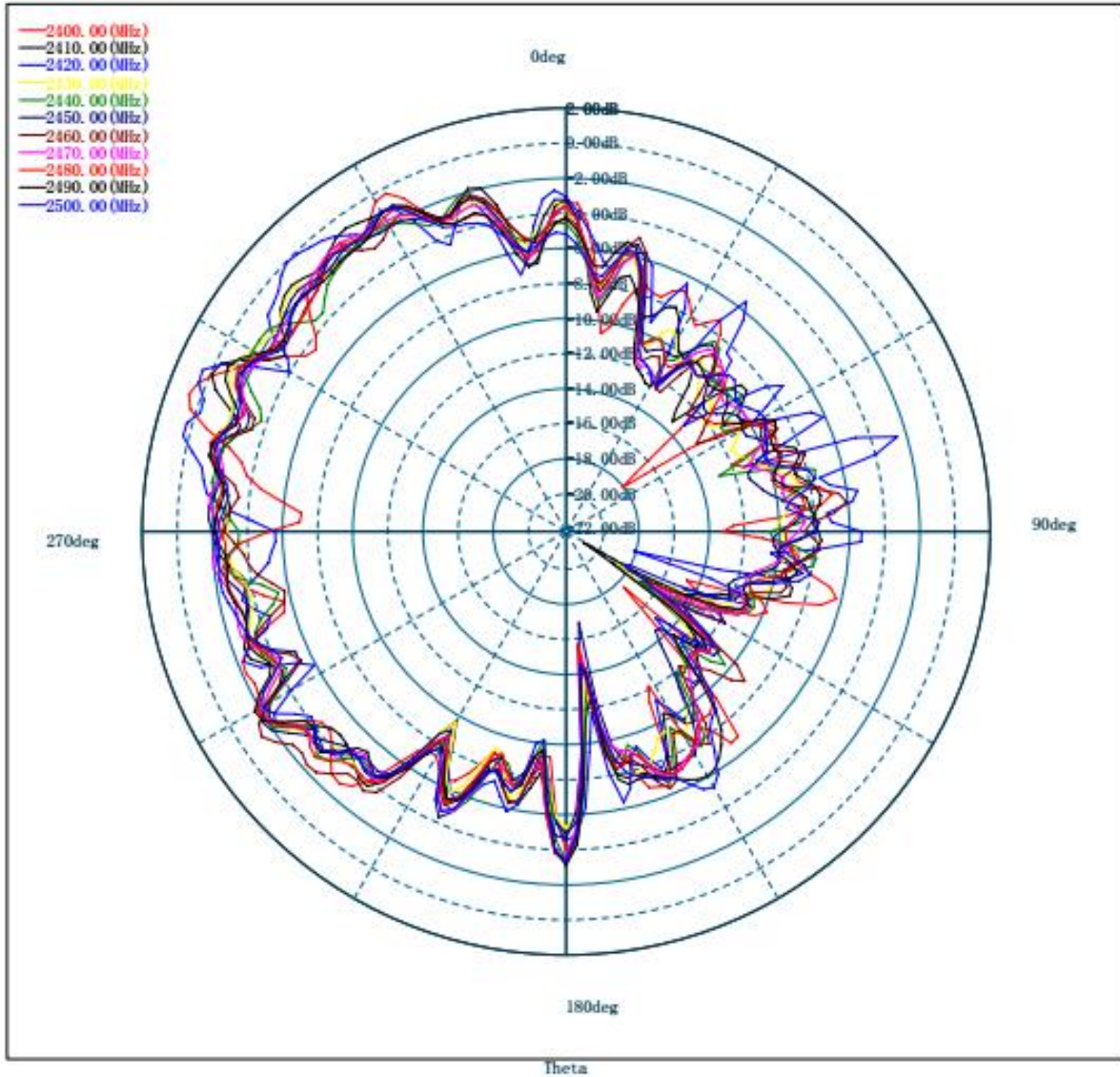
5 Antenna efficiency:

2.4G										
Fred (MHz)	Effi (%)	Effi (%)	Gain (dBi)	Gain (dBd)	UHS (%)	DHS (%)	Max (dB)	Min (dB)	Attenut (Hor)	Attenut (Ver)
2400	44.38	-2.79	1.26	-0.88	40.28	13.32	2.29	-23.79	48.26	49.33
2410	44.63	-2.46	1.66	-0.48	42.42	13.54	2.46	-21.29	48.66	49.58
2420	44.94	-2.12	1.82	-0.32	40.96	14.77	2.68	-20.97	48.71	49.88
2430	44.27	-2.70	1.40	-0.74	43.24	15.23	2.29	-22.77	48.21	49.35
2440	44.75	-2.39	2.00	-0.14	40.71	15.79	2.53	-25.39	48.58	49.56
2450	44.82	-1.83	1.50	-0.64	41.19	16.18	3.15	-21.98	49.11	49.99
2460	44.28	-2.63	1.23	-0.91	42.39	18.25	2.31	-25.62	48.37	49.22
2470	44.49	-2.34	1.44	-0.70	41.78	18.80	2.50	-24.31	48.50	49.54
2480	45.08	-2.23	1.00	-1.14	40.89	19.05	3.14	-23.23	48.98	49.99
2490	44.21	-2.68	1.25	-0.89	43.21	19.23	2.35	-21.77	48.24	49.20
2500	44.46	-2.32	1.61	-0.53	40.44	19.62	2.48	-20.30	48.48	49.61

6 Test antenna pattern:



E1



E2

