

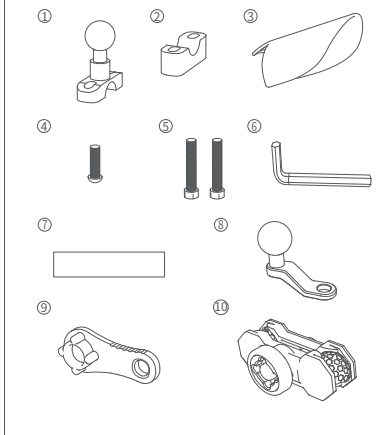
材质:128g铜版纸
尺寸:195*120mm

YF-258 Mobile phone rack (charging type) installation instructions

Installation diagram

Spare parts

Number	YF-258 Handlebar/mirror accessory	QTY
①	Aluminum alloy handle upper ball head accessory	1
②	Aluminum alloy handle lower accessory	1
③	sun visor	1
④	Ø3.5*8 Round head screw	1
⑤	inner hexagonal stainless steel screw M5 * 30	2
⑥	M5 hexagonal small wrench (white zinc)	1
⑦	Silicone 3M slip strip single-sided adhesive 70 * 20 * 1.0MM	1
⑧	Aluminum alloy rearview mirror base ball head accessory	1
⑨	Anti-theft nut wrench	1
⑩	Left and right clips	1



Motorcycle wiring connecting

1.ACC wiring method: Connect the red positive line of the power line of the intelligent anti-loss power box to the positive extreme of "+" of the battery on the motorcycle, and the black negative line to the negative extreme of "-" of the battery on the motorcycle. The blue line is the on/off control end of the intelligent anti-loss power box, and connect the blue control line to the outlet end of the ignition switch of the motorcycle electric door lock.

2.Conventional wiring method: Connect the red positive pole line and blue control line of the power line of the intelligent anti-loss power supply box together with the positive extreme of the "+" of the battery on the motorcycle, and connect the black negative pole line to the negative end of the "-" of the battery on the motorcycle.

Electric vehicle wiring connecting:

The voltage of the electric vehicle battery is converted to DC12V10A through the DC-DC step-down module, and then the red positive pole line and blue control line of the power line of the intelligent power supply box are connected together to the positive extreme of "+" at the output end of the DC-DC step-down module converter. Connect the black negative wire to the "-" negative extreme at the output end of the DC-DC step-down module converter.

Power supply instruction

The power supply produced by our company is only used for supporting products of our company, and can not be used for other products, nor can it be connected to other products by breaking the wire. The company will not be responsible for the "damage to the original equipment" caused by the failure to follow the instructions of our company. Hereby state!

product parameters :

Product Name:YF-258Wireless charging: 15W Max Voltage: DC12V-24V Waterproof class: IP67

Service Policy

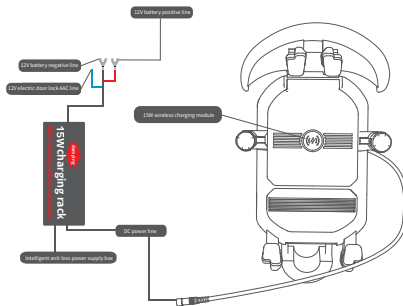
- 1.YF-258 universal wireless charging mobile phone rack can enjoy the service of only replacement without repair in case of quality problems during normal installation and use within one year from the date of sale.
2. Limited warranty: After the one-year warranty period expires, the manufacturer will provide paid warranty service, based on the actual cost of material replacement.
3. The Terms of Service are not applicable to the following situations: artificial damage, self-disassembly, self-modification, destruction of the cable label provided by the factory is inconsistent or altered.

The Do's And Don'ts

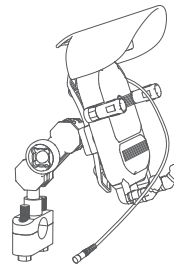
Please read the relevant after-sales service terms carefully before use. Unpacking and installation means acceptance of the after-sales service terms.

1. This motorcycle mobile phone rack is only available for daily driving use, strict excessive use, such as leap, competition, high-intensity cross-country, etc.
2. Check all screws regularly. If they are loose, please tighten them in time.
- 3.To ensure the best wireless charging effect, place the phone as close to the back of the phone holder as possible, and use the phone protection case as thin as possible.

Wireless charging module connection diagram



Handle installation diagram



Rearview mirror installation diagram



(Installation completion diagram)

FCC Statement

Note: This equipment has been tested and found to comply with the limits for a Class B digital device, pursuant to part 15 of the FCC Rules. These limits are designed to provide reasonable protection against harmful interference in a residential installation. This equipment generates, uses and can radiate radio frequency energy and, if not installed and used in accordance with the instructions, may cause harmful interference to radio communications. However, there is no guarantee that interference will not occur in a particular installation. If this equipment does cause harmful interference to radio or television reception, which can be determined by turning the equipment off and on, the user is encouraged to try to correct the interference by one or more of the following measures:

- Reorient or relocate the receiving antenna.
- Increase the separation between the equipment and receiver.
- Connect the equipment into an outlet on a circuit different from that to which the receiver is connected.
- Consult the dealer or an experienced radio/TV technician for help.

This device complies with part 15 of the FCC Rules. Operation is subject to the following two conditions:(1) This device may not cause harmful interference, and (2) this device must accept any interference received, including interference that may cause undesired operation.

Any changes or modifications not expressly approved by the party responsible for compliance could void the user's authority to operate the equipment.

This equipment complies with FCC radiation exposure limits set forth for an uncontrolled environment. This equipment should be installed and operated with minimum distance 20cm between the radiator & your body.