

Plot 7

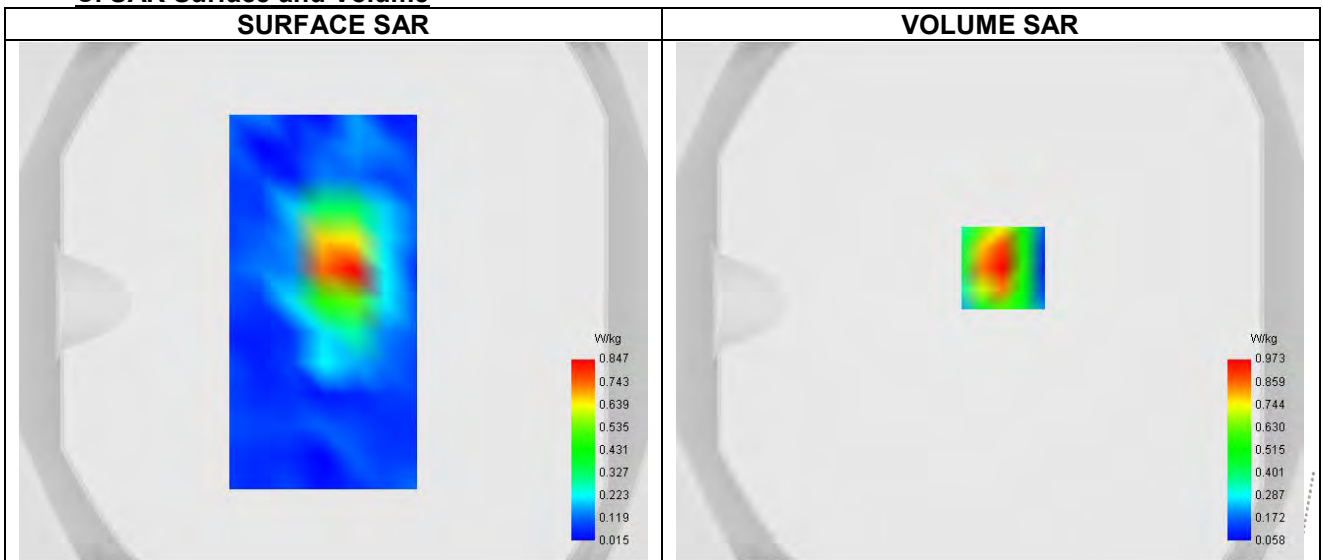
Date of measurement: 6/11/2024

A. Experimental conditions.

| | |
|-----------------|------------------------------|
| Probe | SN 26/23 EPGO420 |
| ConvF | 0.96 |
| Area Scan | surf_sam_plan.txt |
| Zoom Scan | 5x5x7,dx=8mm dy=8mm dz=5.0mm |
| Phantom | Validation plane |
| Device Position | Body |
| Band | Band 4 (1700) |
| Signal | WCDMA |
| Mode | Release 99 |
| Connection Type | RMC, 12.2 kbps |

B. Permittivity

| | |
|--|----------|
| Frequency (MHz) | 1740.000 |
| Relative permittivity (real part) | 41.479 |
| Relative permittivity (imaginary part) | 14.189 |
| Conductivity (S/m) | 1.377 |

C. SAR Surface and Volume


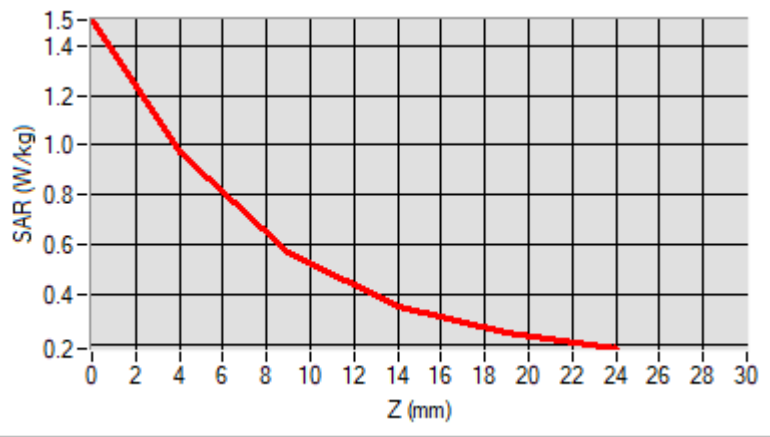
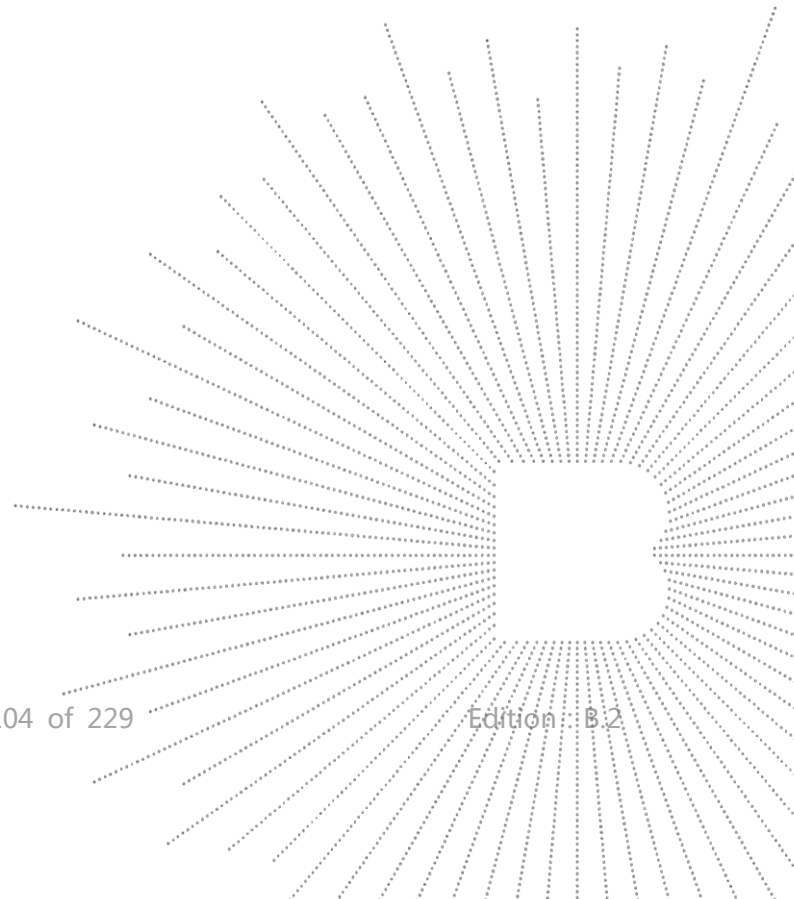
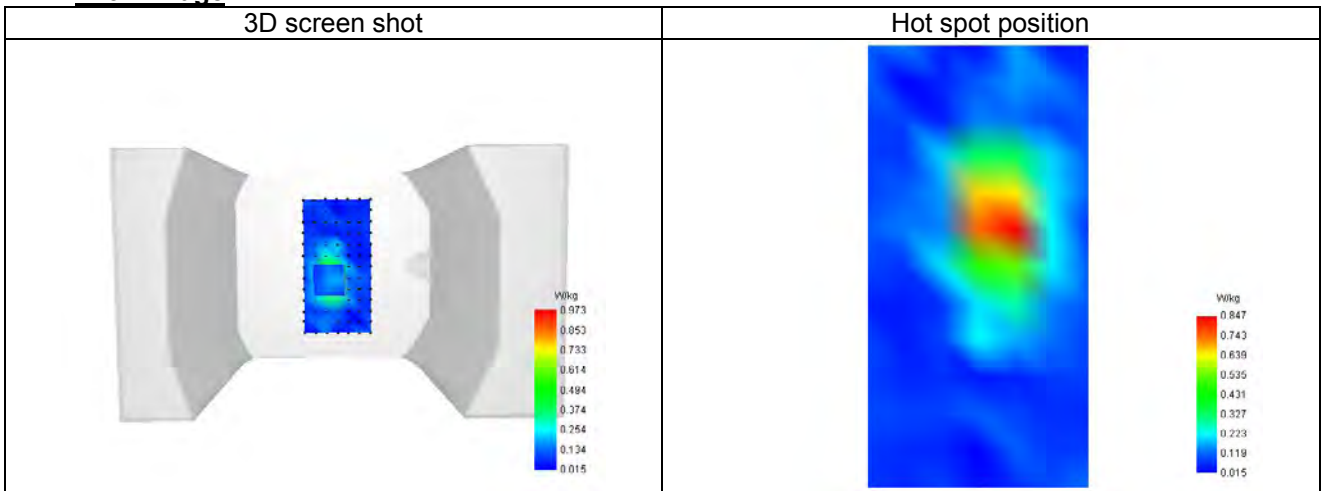
Maximum location: X=5.00, Y=13.00 ; SAR Peak: 1.62 W/kg

D. SAR 1g & 10g

| | |
|---|----------|
| SAR 10g (W/Kg) | 0.500 |
| SAR 1g (W/Kg) | 0.925 |
| Variation (%) | 2.380 |
| Horizontal validation criteria: minimum distance (mm) | 0.000000 |
| Vertical validation criteria: SAR ratio M2/M1 (%) | 0.000000 |

E. Z Axis Scan

| | | | | | |
|------------|-------|-------|-------|-------|-------|
| Z (mm) | 0.00 | 4.00 | 9.00 | 14.00 | 19.00 |
| SAR (W/Kg) | 1.504 | 0.973 | 0.564 | 0.348 | 0.241 |


F. 3D Image


Plot 8

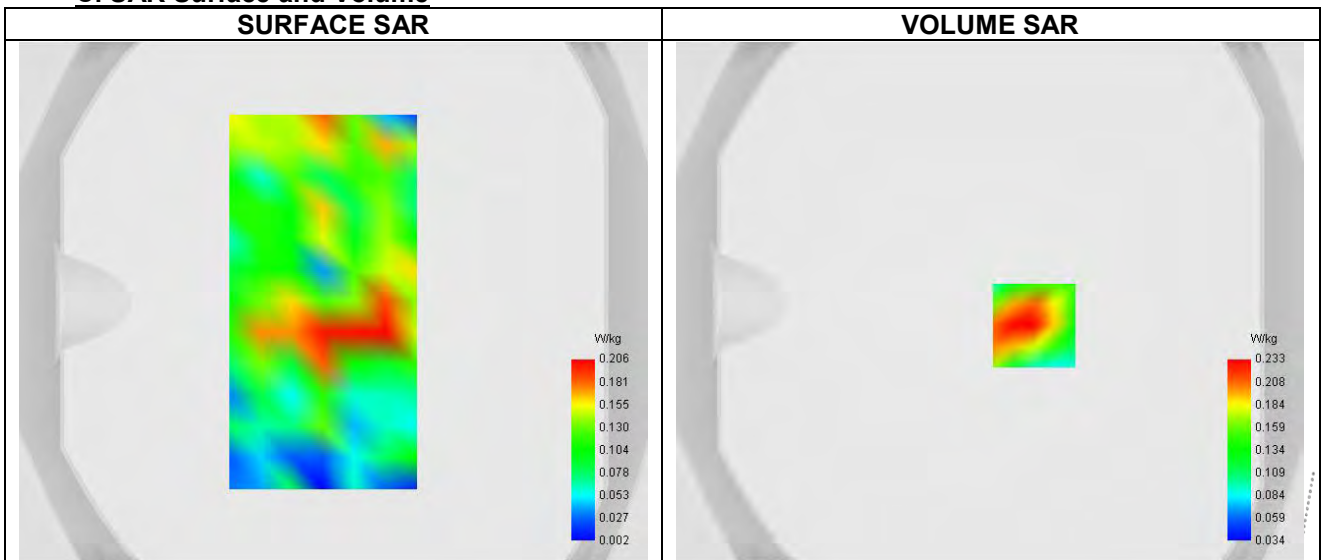
Date of measurement: 4/11/2024

A. Experimental conditions.

| | |
|-----------------|------------------------------|
| Probe | SN 26/23 EPGO420 |
| ConvF | 0.81 |
| Area Scan | surf_sam_plan.txt |
| Zoom Scan | 5x5x7,dx=8mm dy=8mm dz=5.0mm |
| Phantom | Validation plane |
| Device Position | Body |
| Band | Band 5 (850) |
| Signal | WCDMA |
| Mode | Release 99 |
| Connection Type | RMC, 12.2 kbps |

B. Permittivity

| | |
|--|---------|
| Frequency (MHz) | 836.400 |
| Relative permittivity (real part) | 42.303 |
| Relative permittivity (imaginary part) | 19.400 |
| Conductivity (S/m) | 0.936 |

C. SAR Surface and Volume


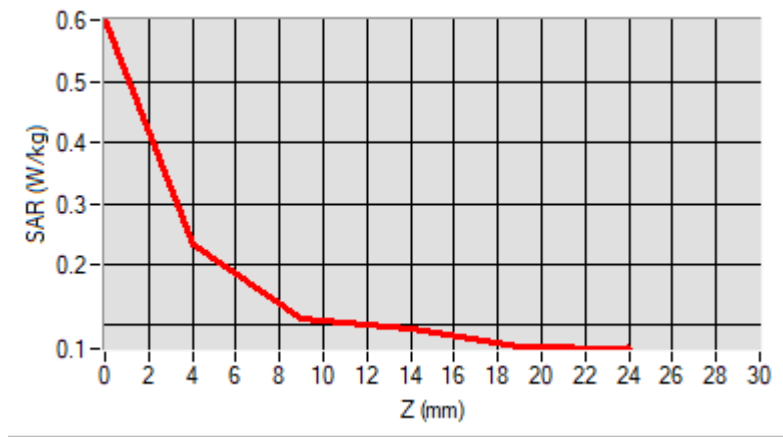
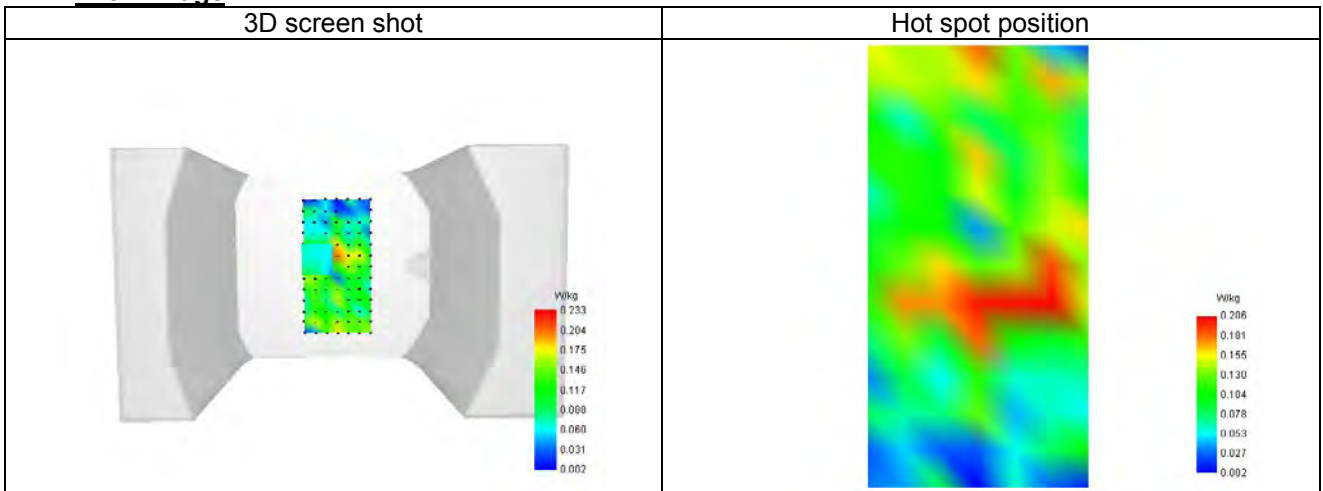
Maximum location: X=17.00, Y=-9.00 ; SAR Peak: 0.36 W/kg

D. SAR 1g & 10g

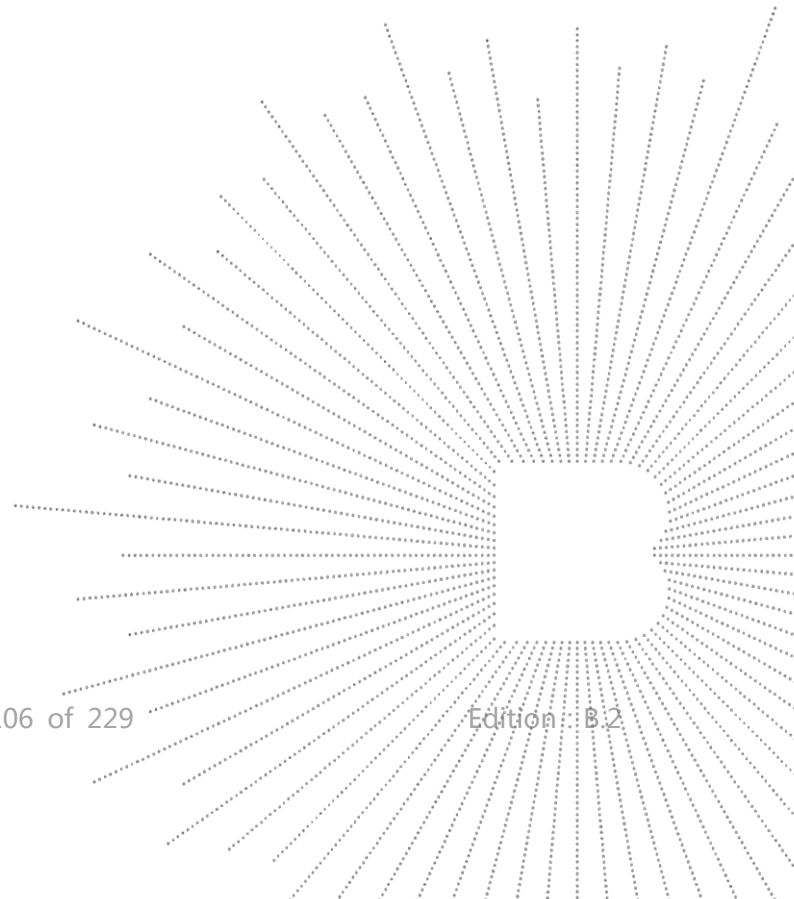
| | |
|---|----------|
| SAR 10g (W/Kg) | 0.132 |
| SAR 1g (W/Kg) | 0.225 |
| Variation (%) | -2.130 |
| Horizontal validation criteria: minimum distance (mm) | 0.000000 |
| Vertical validation criteria: SAR ratio M2/M1 (%) | 0.000000 |

E. Z Axis Scan

| | | | | | |
|------------|-------|-------|-------|-------|-------|
| Z (mm) | 0.00 | 4.00 | 9.00 | 14.00 | 19.00 |
| SAR (W/Kg) | 0.601 | 0.233 | 0.110 | 0.096 | 0.066 |


F. 3D Image


TEC
 TO
 OVE
 t See



Plot 9

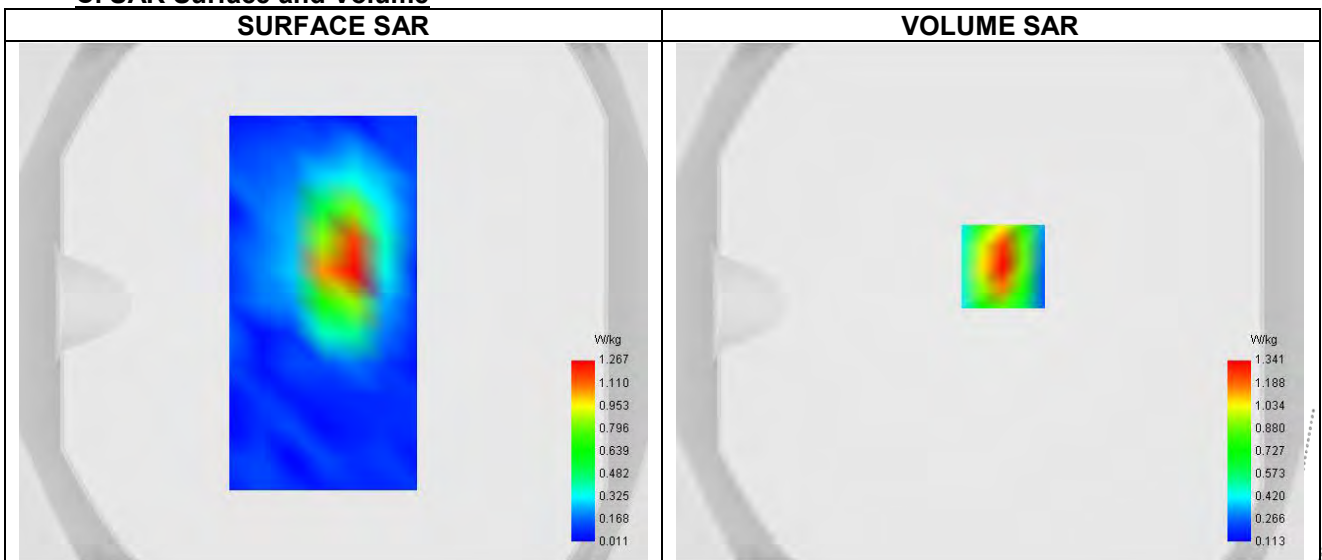
Date of measurement: 7/11/2024

A. Experimental conditions.

| | |
|-----------------|------------------------------|
| Probe | SN 26/23 EPGO420 |
| ConvF | 1.04 |
| Area Scan | surf_sam_plan.txt |
| Zoom Scan | 5x5x7,dx=8mm dy=8mm dz=5.0mm |
| Phantom | Validation plane |
| Device Position | Body |
| Band | LTE band 2 |
| Signal | LTE FDD |
| Cell Bandwidth | 20 Mhz |
| Modulation | SC-OFDM - QPSK |
| RB offset | 5 |
| RB size | 20 |

B. Permittivity

| | |
|--|----------|
| Frequency (MHz) | 1860.000 |
| Relative permittivity (real part) | 40.795 |
| Relative permittivity (imaginary part) | 13.455 |
| Conductivity (S/m) | 1.358 |

C. SAR Surface and Volume


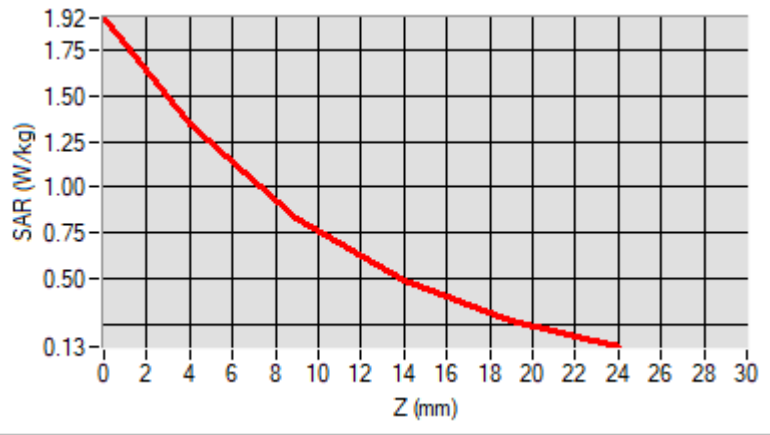
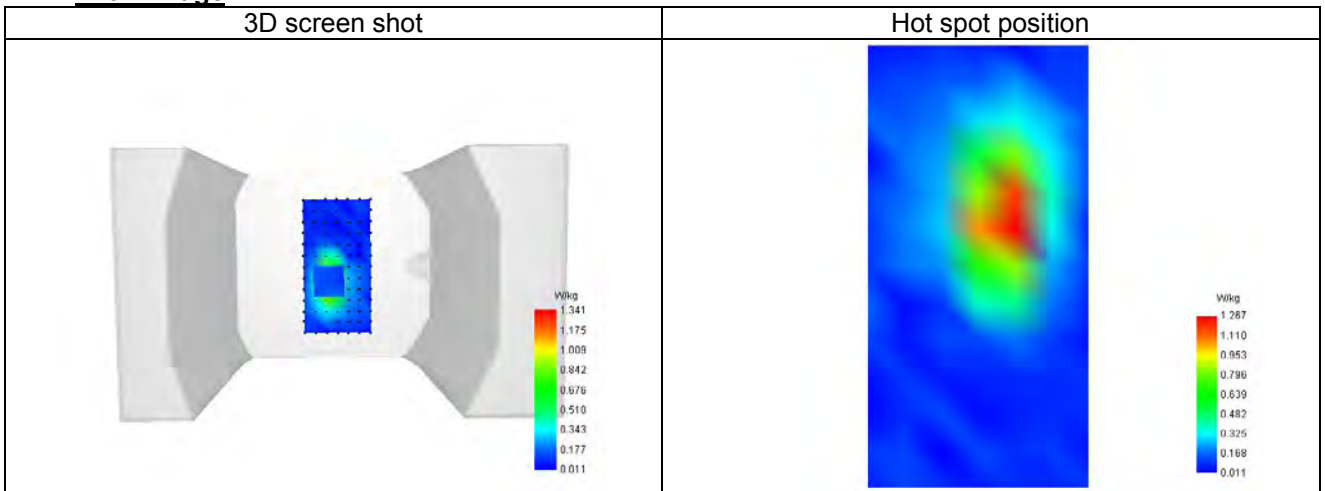
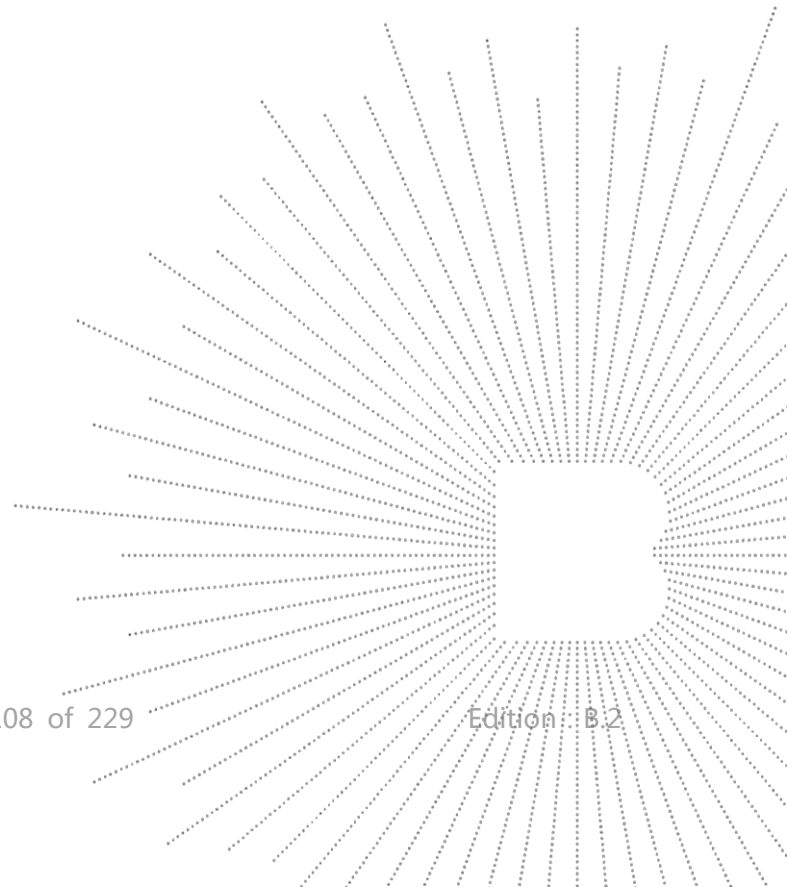
Maximum location: X=5.00, Y=14.00 ; SAR Peak: 1.96 W/kg

D. SAR 1g & 10g

| | |
|---|----------|
| SAR 10g (W/Kg) | 0.672 |
| SAR 1g (W/Kg) | 1.239 |
| Variation (%) | 1.890 |
| Horizontal validation criteria: minimum distance (mm) | 0.000000 |
| Vertical validation criteria: SAR ratio M2/M1 (%) | 0.000000 |

E. Z Axis Scan

| | | | | | |
|------------|-------|-------|-------|-------|-------|
| Z (mm) | 0.00 | 4.00 | 9.00 | 14.00 | 19.00 |
| SAR (W/Kg) | 1.924 | 1.341 | 0.825 | 0.487 | 0.272 |


F. 3D Image



Plot 10

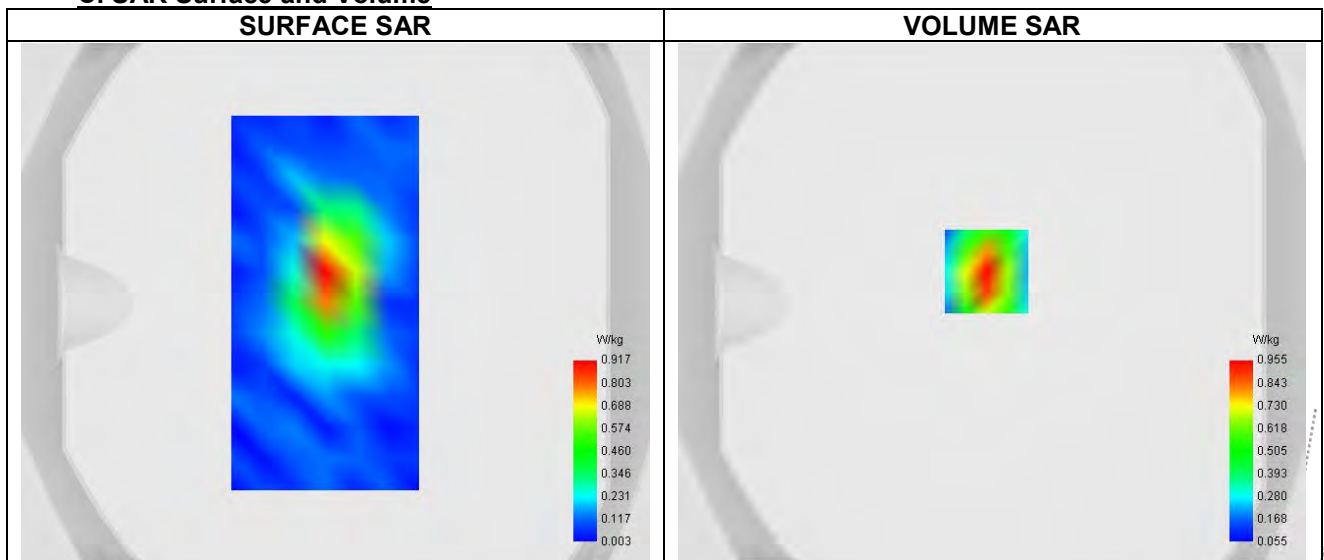
Date of measurement: 6/11/2024

A. Experimental conditions.

| | |
|-----------------|------------------------------|
| Probe | SN 26/23 EPGO420 |
| ConvF | 0.96 |
| Area Scan | surf_sam_plan.txt |
| Zoom Scan | 5x5x7,dx=8mm dy=8mm dz=5.0mm |
| Phantom | Validation plane |
| Device Position | Body |
| Band | LTE band 4 |
| Signal | LTE FDD |
| Cell Bandwidth | 20 Mhz |
| Modulation | SC-OFDM - QPSK |
| RB offset | 5 |
| RB size | 20 |

B. Permittivity

| | |
|--|----------|
| Frequency (MHz) | 1745.000 |
| Relative permittivity (real part) | 41.479 |
| Relative permittivity (imaginary part) | 14.120 |
| Conductivity (S/m) | 1.377 |

C. SAR Surface and Volume


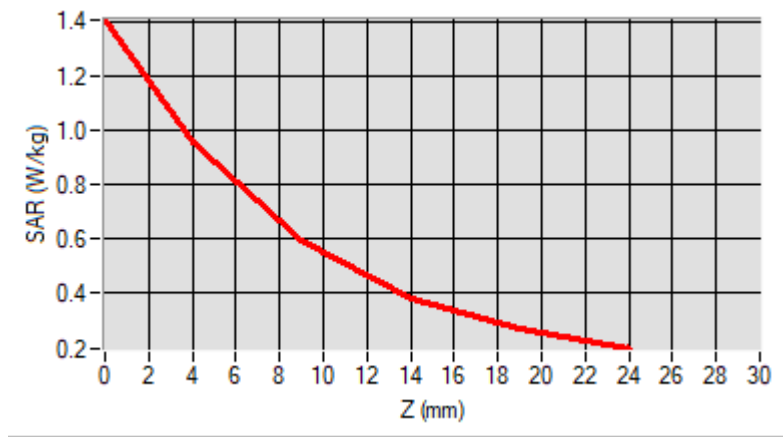
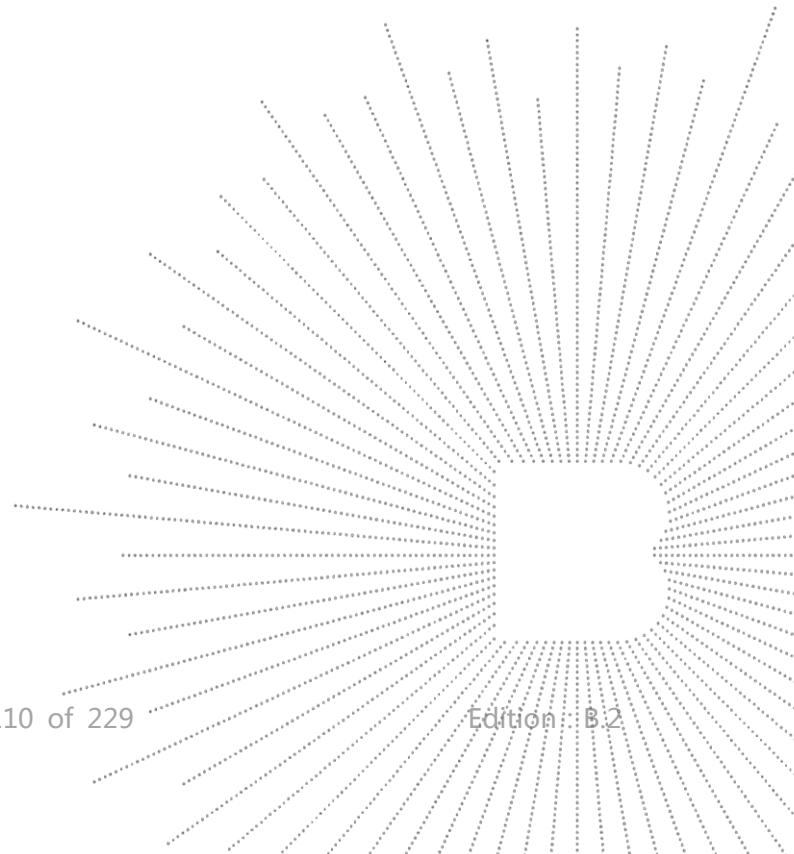
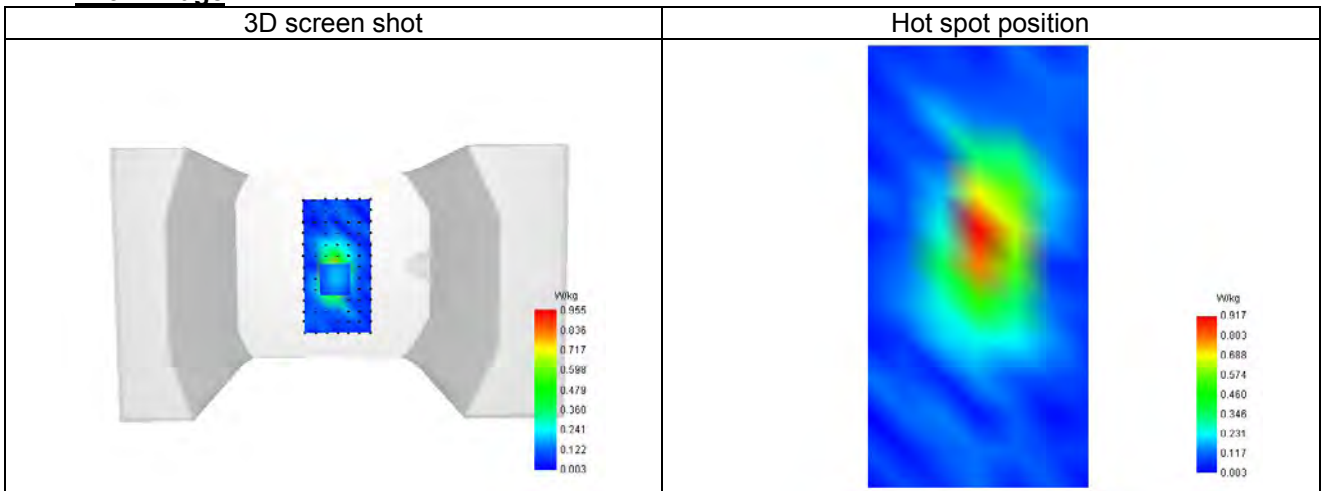
Maximum location: X=-2.00, Y=12.00 ; SAR Peak: 1.41 W/kg

D. SAR 1g & 10g

| | |
|---|----------|
| SAR 10g (W/Kg) | 0.493 |
| SAR 1g (W/Kg) | 0.882 |
| Variation (%) | 3.380 |
| Horizontal validation criteria: minimum distance (mm) | 0.000000 |
| Vertical validation criteria: SAR ratio M2/M1 (%) | 0.000000 |

E. Z Axis Scan

| | | | | | |
|------------|-------|-------|-------|-------|-------|
| Z (mm) | 0.00 | 4.00 | 9.00 | 14.00 | 19.00 |
| SAR (W/Kg) | 1.405 | 0.955 | 0.591 | 0.383 | 0.269 |


F. 3D Image


Plot 11

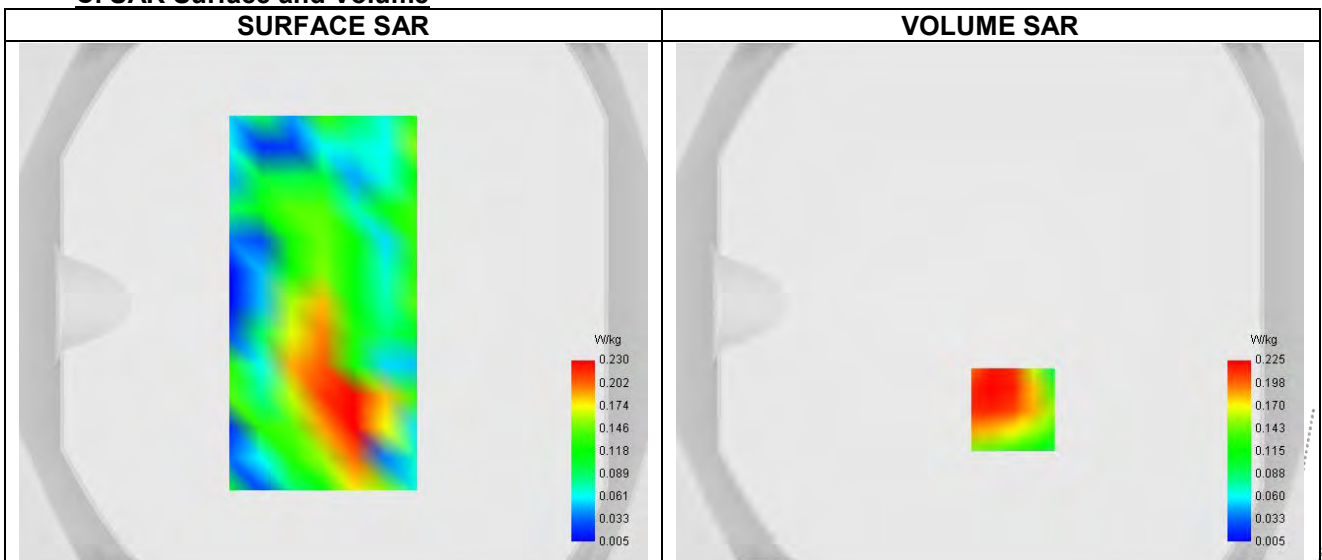
Date of measurement: 4/11/2024

A. Experimental conditions.

| | |
|-----------------|------------------------------|
| Probe | SN 26/23 EPGO420 |
| ConvF | 0.81 |
| Area Scan | surf_sam_plan.txt |
| Zoom Scan | 5x5x7,dx=8mm dy=8mm dz=5.0mm |
| Phantom | Validation plane |
| Device Position | Body |
| Band | LTE band 5 |
| Signal | LTE FDD |
| Cell Bandwidth | 10 Mhz |
| Modulation | SC-OFDM - QPSK |
| RB offset | 5 |
| RB size | 20 |

B. Permittivity

| | |
|--|---------|
| Frequency (MHz) | 844.000 |
| Relative permittivity (real part) | 42.303 |
| Relative permittivity (imaginary part) | 19.407 |
| Conductivity (S/m) | 0.936 |

C. SAR Surface and Volume


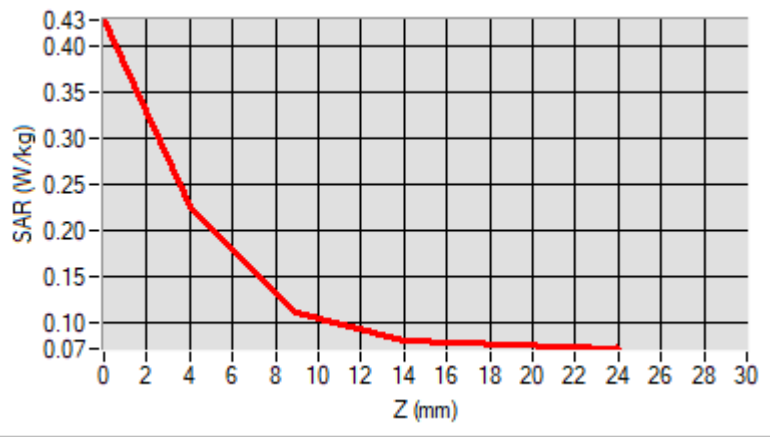
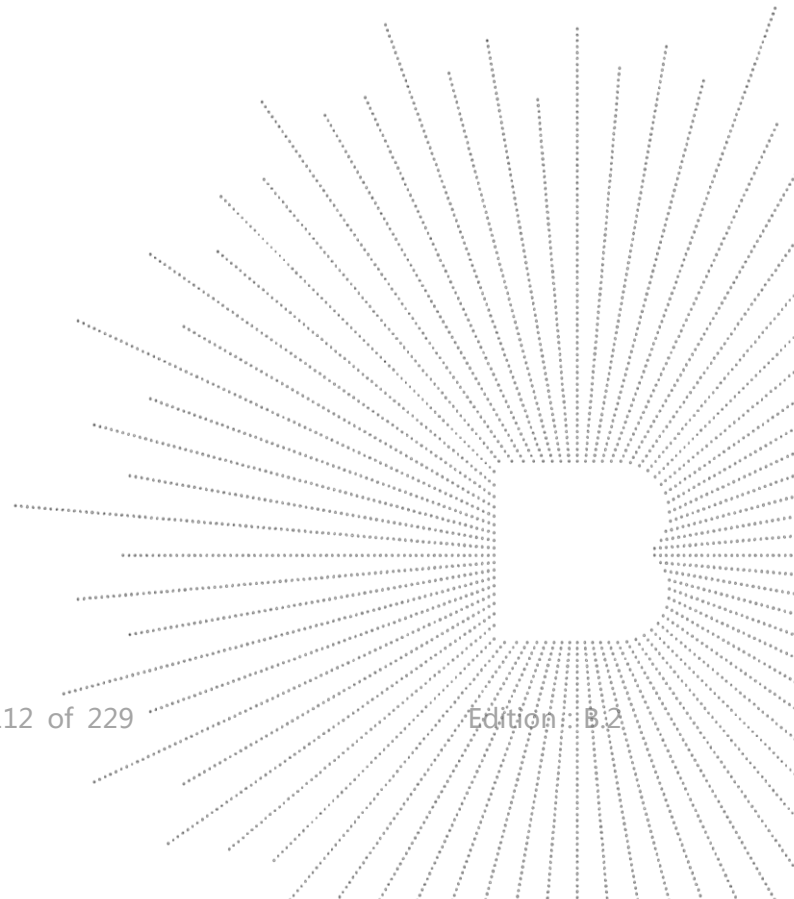
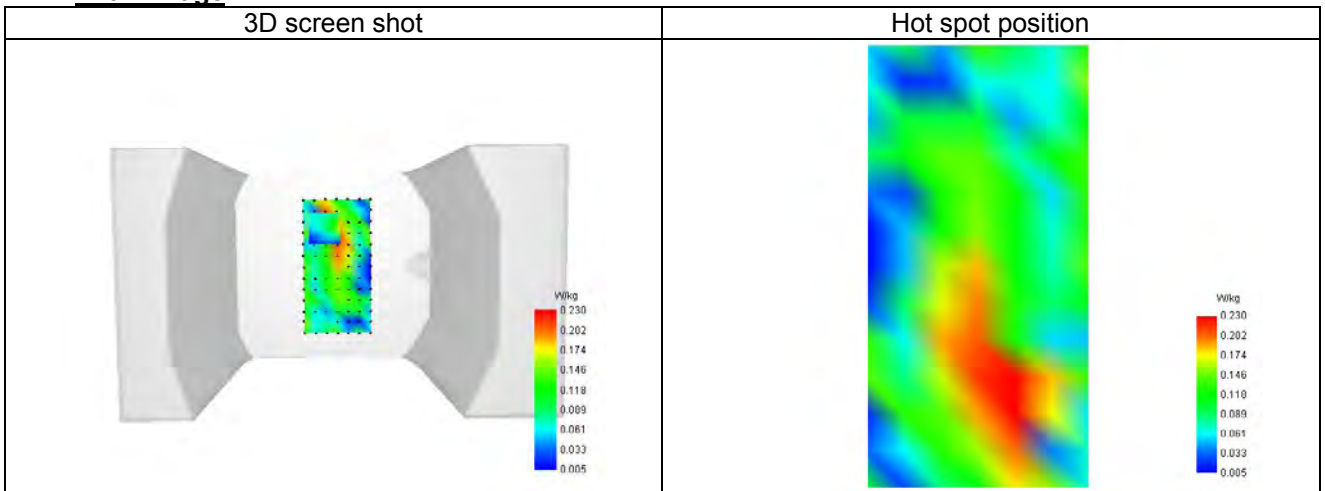
Maximum location: X=9.00, Y=-41.00 ; SAR Peak: 0.45 W/kg

D. SAR 1g & 10g

| | |
|---|----------|
| SAR 10g (W/Kg) | 0.126 |
| SAR 1g (W/Kg) | 0.238 |
| Variation (%) | 3.280 |
| Horizontal validation criteria: minimum distance (mm) | 0.000000 |
| Vertical validation criteria: SAR ratio M2/M1 (%) | 0.000000 |

E. Z Axis Scan

| | | | | | |
|------------|-------|-------|-------|-------|-------|
| Z (mm) | 0.00 | 4.00 | 9.00 | 14.00 | 19.00 |
| SAR (W/Kg) | 0.428 | 0.225 | 0.112 | 0.080 | 0.076 |


F. 3D Image


TEC
 TO
 OVE
 t See

Plot 12

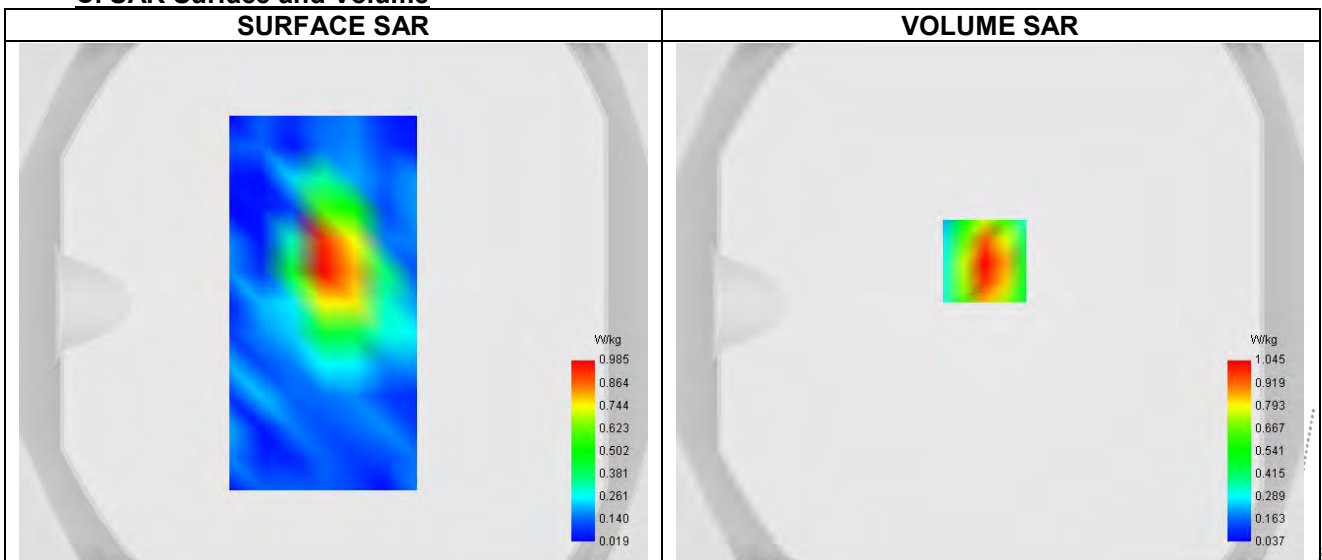
Date of measurement: 8/11/2024

A. Experimental conditions.

| | |
|-----------------|------------------------------|
| Probe | SN 26/23 EPGO420 |
| ConvF | 1.03 |
| Area Scan | surf_sam_plan.txt |
| Zoom Scan | 5x5x7,dx=8mm dy=8mm dz=5.0mm |
| Phantom | Validation plane |
| Device Position | Body |
| Band | LTE band 7 |
| Signal | LTE FDD |
| Cell Bandwidth | 20 Mhz |
| Modulation | SC-OFDM - QPSK |
| RB offset | 5 |
| RB size | 20 |

B. Permittivity

| | |
|--|----------|
| Frequency (MHz) | 2510.000 |
| Relative permittivity (real part) | 39.875 |
| Relative permittivity (imaginary part) | 13.404 |
| Conductivity (S/m) | 1.965 |

C. SAR Surface and Volume


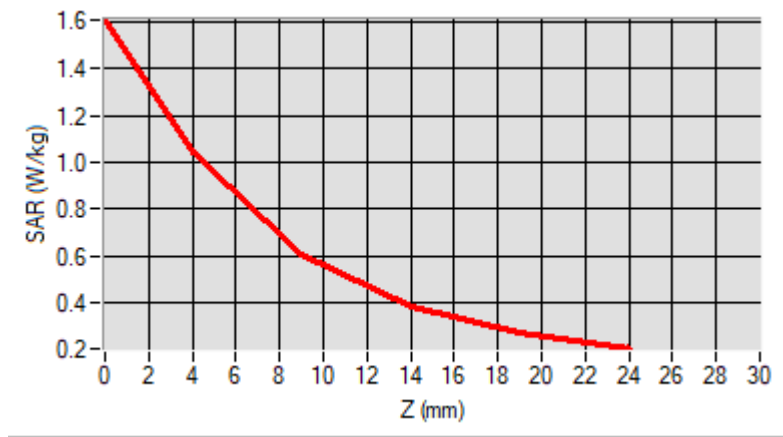
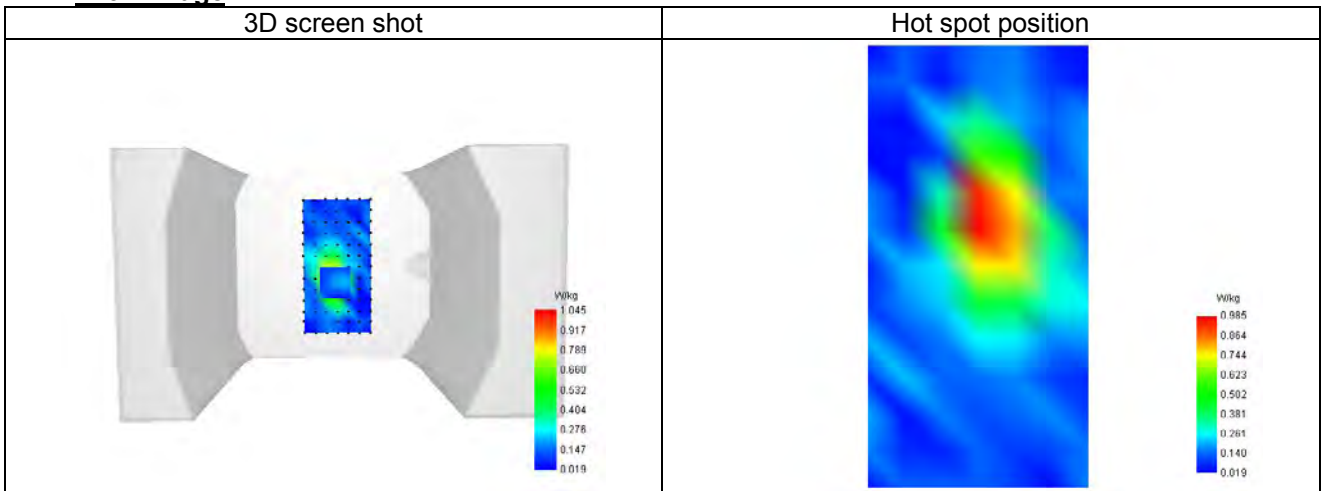
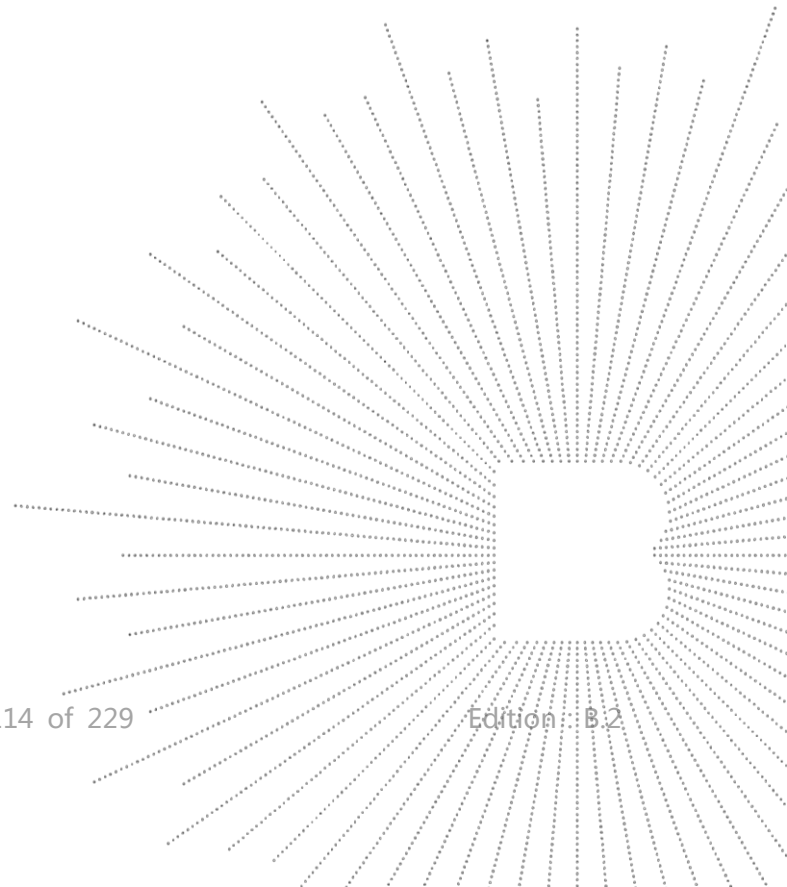
Maximum location: X=-2.00, Y=16.00 ; SAR Peak: 1.61 W/kg

D. SAR 1g & 10g

| | |
|---|----------|
| SAR 10g (W/Kg) | 0.549 |
| SAR 1g (W/Kg) | 0.982 |
| Variation (%) | 3.990 |
| Horizontal validation criteria: minimum distance (mm) | 0.000000 |
| Vertical validation criteria: SAR ratio M2/M1 (%) | 0.000000 |

E. Z Axis Scan

| | | | | | |
|------------|-------|-------|-------|-------|-------|
| Z (mm) | 0.00 | 4.00 | 9.00 | 14.00 | 19.00 |
| SAR (W/Kg) | 1.607 | 1.045 | 0.612 | 0.382 | 0.270 |


F. 3D Image



Plot 13

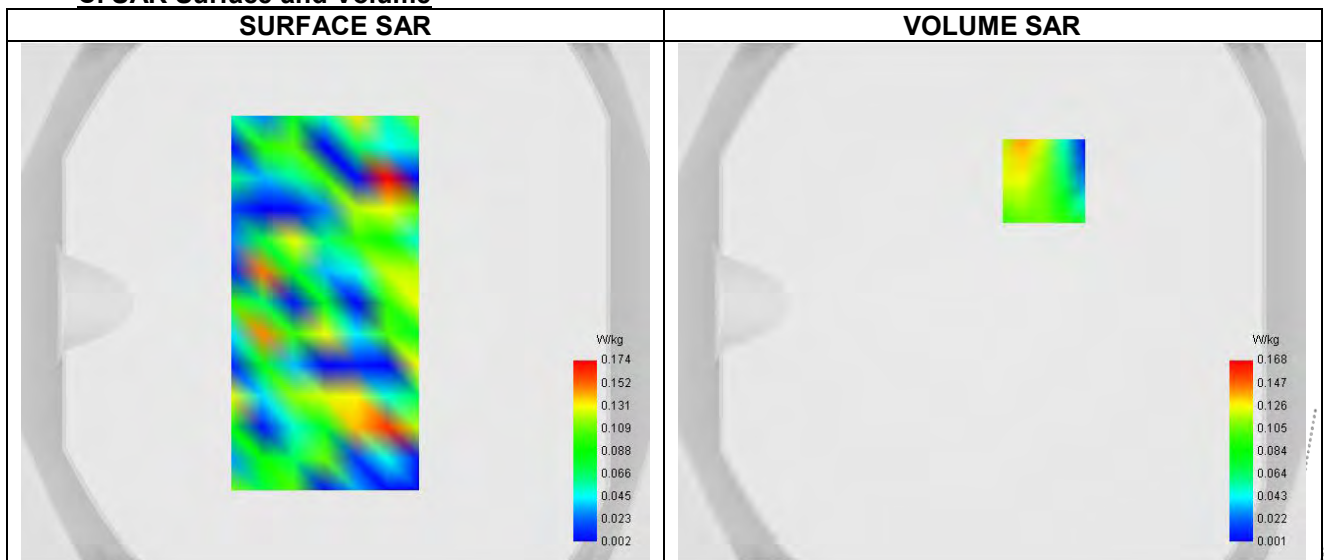
Date of measurement: 6/11/2024

A. Experimental conditions.

| | |
|-----------------|------------------------------|
| Probe | SN 26/23 EPGO420 |
| ConvF | 0.80 |
| Area Scan | surf_sam_plan.txt |
| Zoom Scan | 5x5x7,dx=8mm dy=8mm dz=5.0mm |
| Phantom | Validation plane |
| Device Position | Body |
| Band | LTE band 12 |
| Signal | LTE FDD |
| Cell Bandwidth | 10 Mhz |
| Modulation | SC-OFDM - QPSK |
| RB offset | 5 |
| RB size | 20 |

B. Permittivity

| | |
|--|---------|
| Frequency (MHz) | 707.500 |
| Relative permittivity (real part) | 41.112 |
| Relative permittivity (imaginary part) | 23.345 |
| Conductivity (S/m) | 0.921 |

C. SAR Surface and Volume


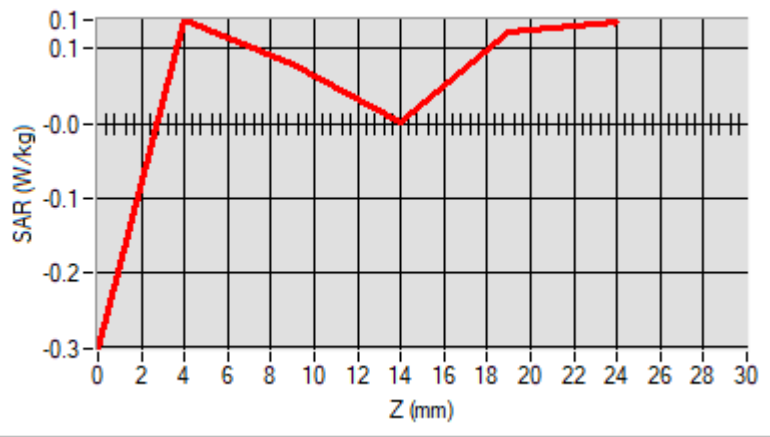
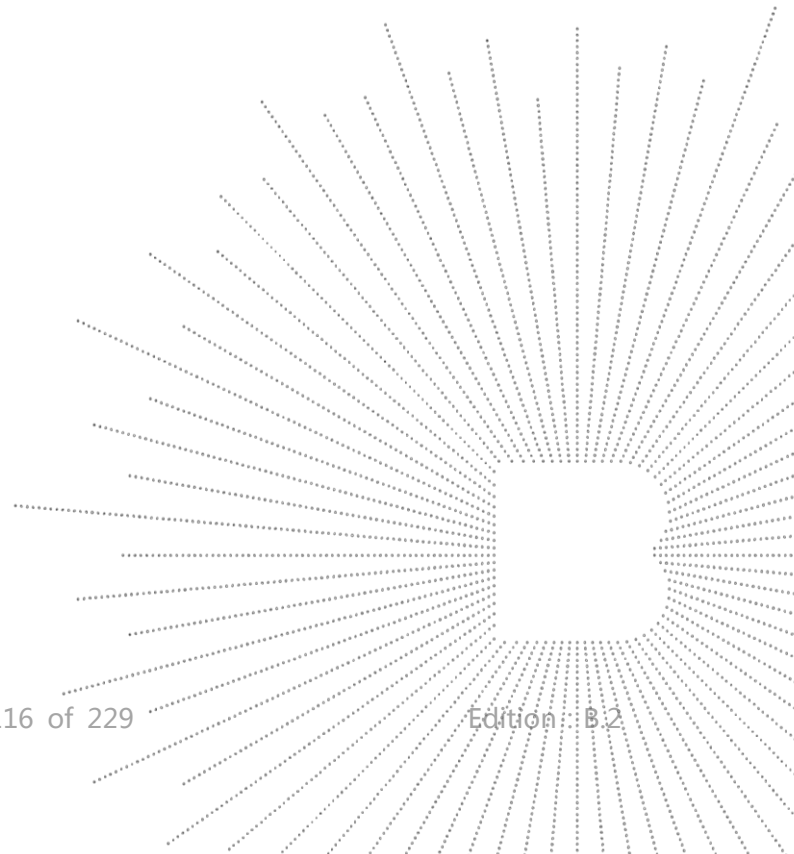
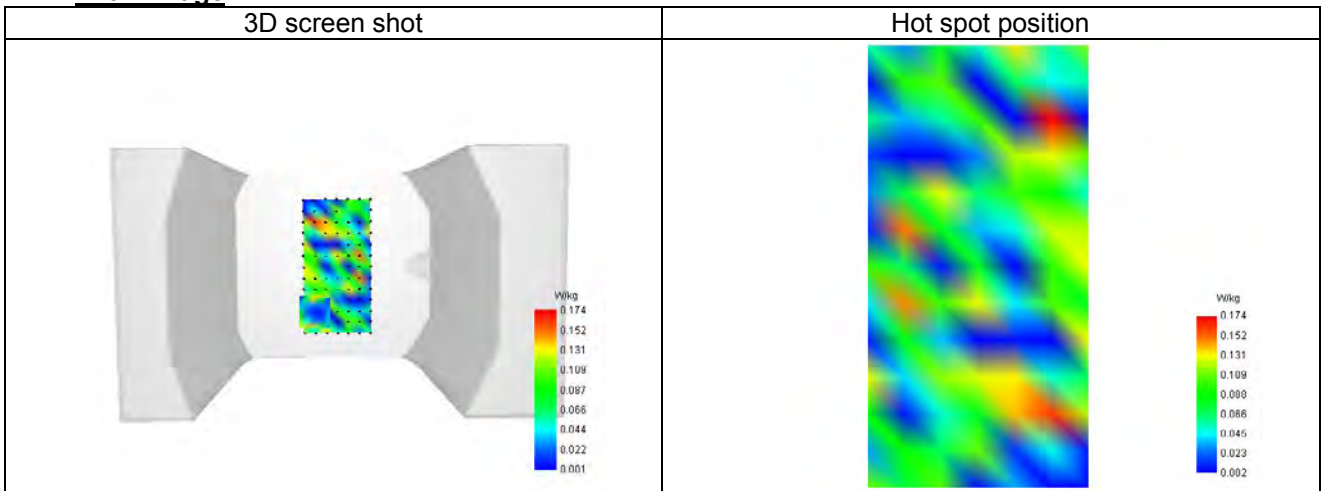
Maximum location: X=20.00, Y=47.00 ; SAR Peak: 0.50 W/kg

D. SAR 1g & 10g

| | |
|---|----------|
| SAR 10g (W/Kg) | 0.099 |
| SAR 1g (W/Kg) | 0.284 |
| Variation (%) | -3.130 |
| Horizontal validation criteria: minimum distance (mm) | 0.000000 |
| Vertical validation criteria: SAR ratio M2/M1 (%) | 0.000000 |

E. Z Axis Scan

| | | | | | |
|------------|--------|-------|-------|-------|-------|
| Z (mm) | 0.00 | 4.00 | 9.00 | 14.00 | 19.00 |
| SAR (W/Kg) | -0.302 | 0.139 | 0.078 | 0.001 | 0.121 |


F. 3D Image


Plot 14

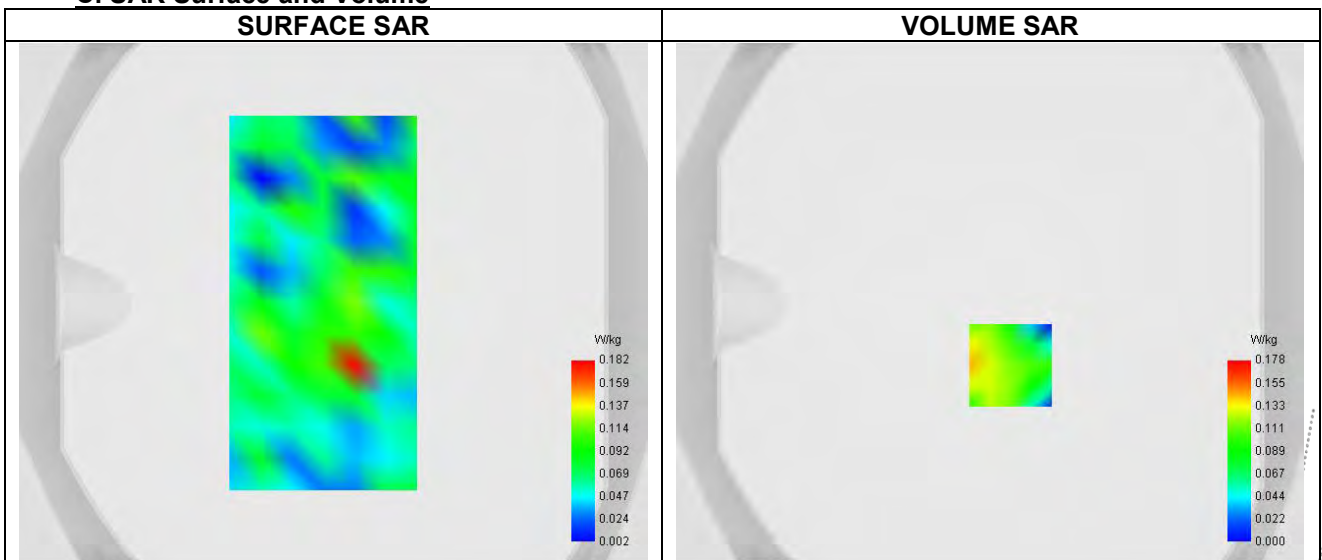
Date of measurement: 6/11/2024

A. Experimental conditions.

| | |
|-----------------|------------------------------|
| Probe | SN 26/23 EPGO420 |
| ConvF | 0.80 |
| Area Scan | surf_sam_plan.txt |
| Zoom Scan | 5x5x7,dx=8mm dy=8mm dz=5.0mm |
| Phantom | Validation plane |
| Device Position | Body |
| Band | LTE band 17 |
| Signal | LTE FDD |
| Cell Bandwidth | 10 Mhz |
| Modulation | SC-OFDM - QPSK |
| RB offset | 5 |
| RB size | 20 |

B. Permittivity

| | |
|--|---------|
| Frequency (MHz) | 710.000 |
| Relative permittivity (real part) | 41.112 |
| Relative permittivity (imaginary part) | 23.233 |
| Conductivity (S/m) | 0.921 |

C. SAR Surface and Volume


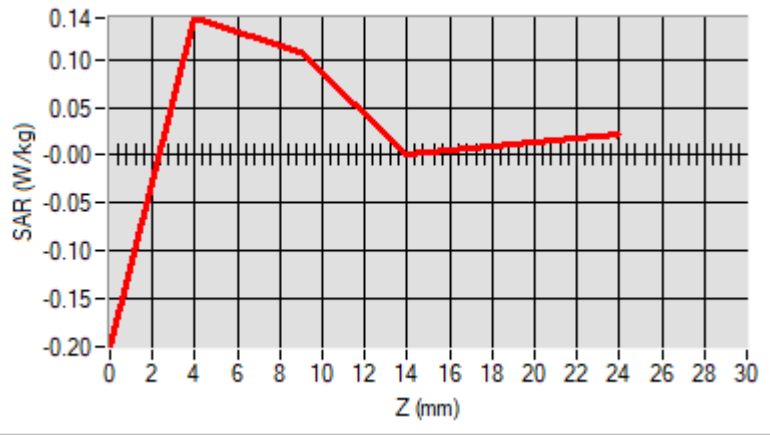
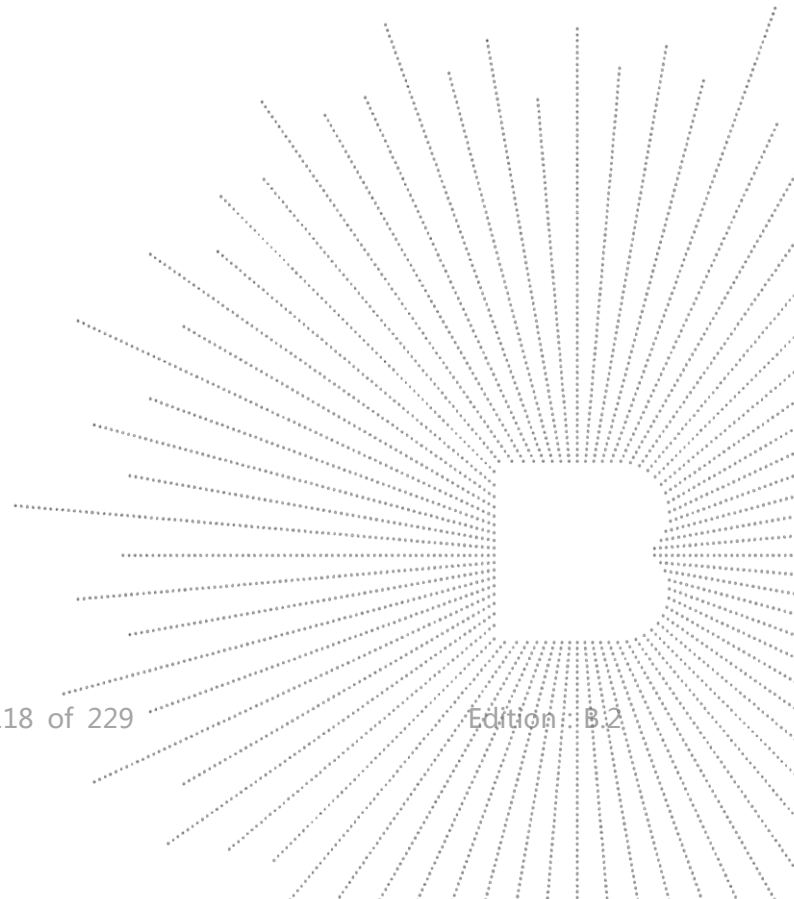
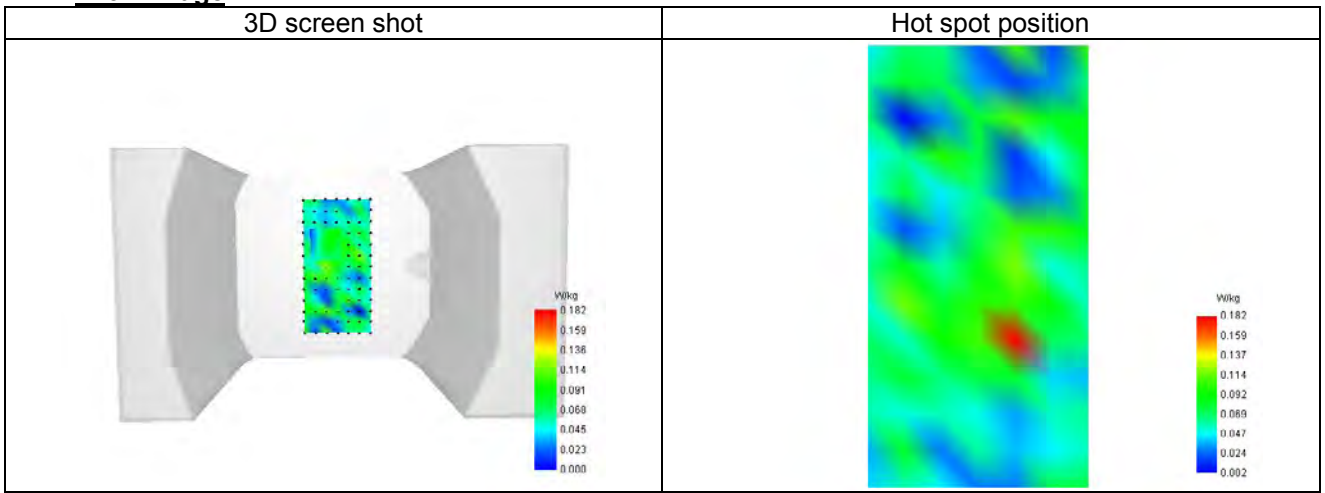
Maximum location: X=8.00, Y=-24.00 ; SAR Peak: 0.51 W/kg

D. SAR 1g & 10g

| | |
|---|----------|
| SAR 10g (W/Kg) | 0.075 |
| SAR 1g (W/Kg) | 0.187 |
| Variation (%) | -2.290 |
| Horizontal validation criteria: minimum distance (mm) | 0.000000 |
| Vertical validation criteria: SAR ratio M2/M1 (%) | 0.000000 |

E. Z Axis Scan

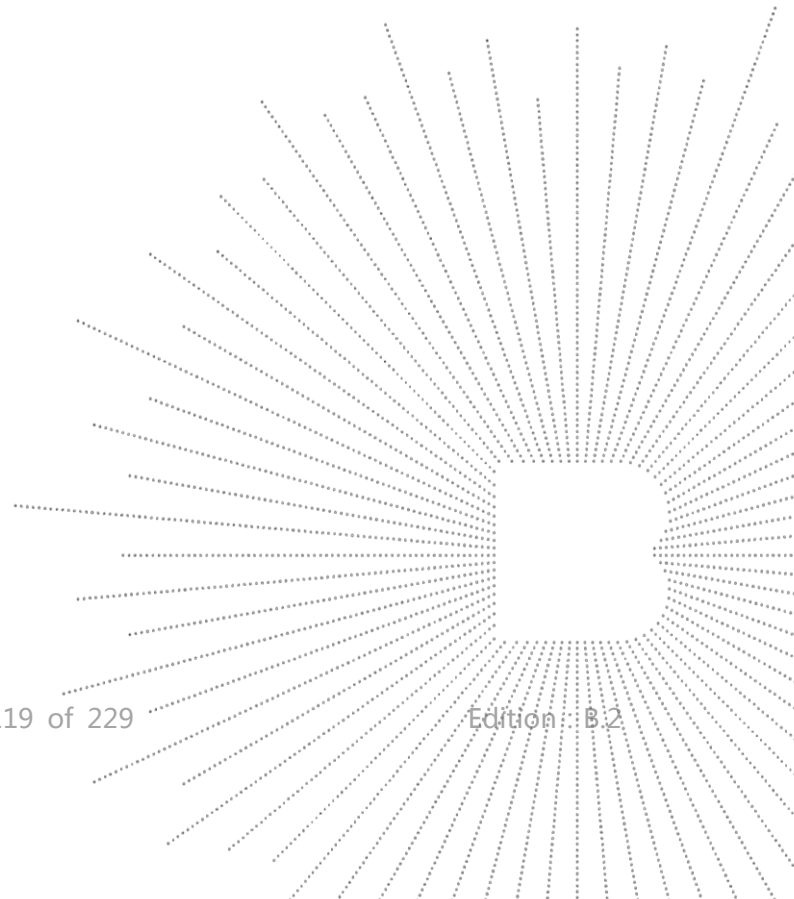
| | | | | | |
|------------|--------|-------|-------|-------|-------|
| Z (mm) | 0.00 | 4.00 | 9.00 | 14.00 | 19.00 |
| SAR (W/Kg) | -0.201 | 0.144 | 0.108 | 0.000 | 0.011 |


F. 3D Image


TEST
 TO
 OVER
 t See

16. CALIBRATION CERTIFICATES

Probe-EPGO420 Calibration Certificate
SID750Dipole Calibration Certificate
SID835Dipole Calibration Certificate
SID1800Dipole Calibration Certificate
SID1900Dipole Calibration Certificate
SID2450Dipole Calibration Certificate
SID2600Dipole Calibration Certificate
SID5000Dipole Calibration Certificate





COMOSAR E-Field Probe Calibration Report

Ref : ACR.199.1.23.BES.A

SHENZHEN BCTC TECHNOLOGY CO., LTD.
1 ~2/ F, NO. B FACTORY BUILDING, PENGZHOU
INDUSTRIAL PARK, FUYUAN 1ST ROAD,
TANGWEI COMMUNITY, FUHAI STREET, BAO'AN
DISTRICT, SHENZHEN, GUANGDONG, CHINA
MVG COMOSAR DOSIMETRIC E-FIELD PROBE
SERIAL NO.: 2623-EPGO-420

Calibrated at MVG
Z.I. de la pointe du diable
Technopôle Brest Iroise – 295 avenue Alexis de Rochon
29280 PLOUZANE - FRANCE

Calibration date: 7/18/2023



Accreditations #2-6789
Scope available on www.cofrac.fr

The use of the Cofrac brand and the accreditation references is prohibited from any reproduction.



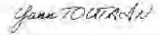
Summary:

This document presents the method and results from an accredited COMOSAR Dosimetric E-Field Probe calibration performed at MVG, using the CALIPROBE test bench, for use with a MVG COMOSAR system only. The test results covered by accreditation are traceable to the International System of Units (SI).

Page: 1/11


COMOSAR E-FIELD PROBE CALIBRATION REPORT

Ref. ACR.199.1.23.BES.A

| | <i>Name</i> | <i>Function</i> | <i>Date</i> | <i>Signature</i> |
|-----------------------------------|---------------|-------------------------|-------------|---|
| <i>Prepared by :</i> | Cyrille ONNEE | Measurement Responsible | 7/18/2023 |  |
| <i>Checked & approved by:</i> | Jérôme Luc | Technical Manager | 7/18/2023 |  |
| <i>Authorized by:</i> | Yann Toutain | Laboratory Director | 7/18/2023 |  |

Yann Toutain ID
 Signature numérique de Yann Toutain ID
 Date : 2023.07.18 10:38:49 +02'00'

| | <i>Customer Name</i> |
|-----------------------|------------------------------------|
| <i>Distribution :</i> | Shenzhen BCTC Technology Co., Ltd. |

| <i>Issue</i> | <i>Name</i> | <i>Date</i> | <i>Modifications</i> |
|--------------|---------------|-------------|----------------------|
| A | Cyrille ONNEE | 7/18/2023 | Initial release |
| | | | |
| | | | |



**TABLE OF CONTENTS**

| | | |
|-----|-------------------------------|----|
| 1 | Device Under Test | 4 |
| 2 | Product Description | 4 |
| 2.1 | General Information | 4 |
| 3 | Measurement Method | 4 |
| 3.1 | Sensitivity | 4 |
| 3.2 | Linearity | 5 |
| 3.3 | Isotropy | 5 |
| 3.4 | Boundary Effect | 5 |
| 4 | Measurement Uncertainty | 6 |
| 5 | Calibration Results | 6 |
| 5.1 | Calibration in air | 6 |
| 5.2 | Calibration in liquid | 7 |
| 6 | Verification Results | 9 |
| 7 | List of Equipment | 10 |

Page: 3/11

Template_ACR.BDD.N.YY.MVGB.ISSUE_COMOSAR_Probe.v1.

This document shall not be reproduced, except in full or in part, without the written approval of MVG. The information contained herein is to be used only for the purpose for which it is submitted and is not to be released in whole or part without written approval of MVG.



1 DEVICE UNDER TEST

| Device Under Test | |
|--|---|
| Device Type | COMOSAR DOSIMETRIC E FIELD PROBE |
| Manufacturer | MVG |
| Model | SSE2 |
| Serial Number | 2623-EPGO-420 |
| Product Condition (new / used) | New |
| Frequency Range of Probe | 0.15 GHz-7.5GHz |
| Resistance of Three Dipoles at Connector | Dipole 1: R1=0.228 MΩ Dipole 2: R2=0.238 MΩ Dipole 3: R3=0.230 MΩ |

2 PRODUCT DESCRIPTION

2.1 GENERAL INFORMATION

MVG's COMOSAR E field Probes are built in accordance to the IEC/IEEE 62209-1528 and FCC KDB865664 D01 standards.



Figure 1 – MVG COMOSAR Dosimetric E field Probe

| | |
|--|---------|
| Probe Length | 330 mm |
| Length of Individual Dipoles | 24.5 mm |
| Maximum external diameter | 8 mm |
| Probe Tip External Diameter | 2.55 mm |
| Distance between dipoles / probe extremity | 12.7 mm |

3 MEASUREMENT METHOD

The IEC/IEEE 62209-1528 and FCC KDB865664 D01 standards provide recommended practices for the probe calibrations, including the performance characteristics of interest and methods by which to assess their effect. All calibrations / measurements performed meet the fore-mentioned standards.

3.1 SENSITIVITY

The sensitivity factors of the three dipoles were determined using a two step calibration method (air and tissue simulating liquid) using waveguides as outlined in the standards for frequency range 600-7500MHz and using the calorimeter cell method (transfer method) as outlined in the standards for frequency 150-450 MHz.



3.2 LINEARITY

The evaluation of the linearity was done in free space using the waveguide, performing a power sweep to cover the SAR range 0.01W/kg to 100W/kg.

3.3 ISOTROPY

The axial isotropy was evaluated by exposing the probe to a reference wave from a standard dipole with the dipole mounted under the flat phantom in the test configuration suggested for system validations and checks. The probe was rotated along its main axis from 0 to 360 degrees in 15-degree steps. The hemispherical isotropy is determined by inserting the probe in a thin plastic box filled with tissue-equivalent liquid, with the plastic box illuminated with the fields from a half wave dipole. The dipole is rotated about its axis (0°–180°) in 15° increments. At each step the probe is rotated about its axis (0°–360°).

3.4 BOUNDARY EFFECT

The boundary effect is defined as the deviation between the SAR measured data and the expected exponential decay in the liquid when the probe is oriented normal to the interface. To evaluate this effect, the liquid filled flat phantom is exposed to fields from either a reference dipole or waveguide. With the probe normal to the phantom surface, the peak spatial average SAR is measured and compared to the analytical value at the surface.

The boundary effect uncertainty can be estimated according to the following uncertainty approximation formula based on linear and exponential extrapolations between the surface and d_{be} + d_{step} along lines that are approximately normal to the surface:

$$SAR_{uncertainty} [\%] = \Delta SAR_{be} \frac{(d_{be} + d_{step})^2 (e^{-d_{be}/\delta})}{2d_{step} \delta/2} \text{ for } (d_{be} + d_{step}) < 10 \text{ mm}$$

where

| | |
|---------------------|--|
| $SAR_{uncertainty}$ | is the uncertainty in percent of the probe boundary effect |
| d_{be} | is the distance between the surface and the closest <i>zoom-scan</i> measurement point, in millimetre |
| Δ_{step} | is the separation distance between the first and second measurement points that are closest to the phantom surface, in millimetre, assuming the boundary effect at the second location is negligible |
| δ | is the minimum penetration depth in millimetres of the head tissue-equivalent liquids defined in this standard, i.e., $\delta \approx 14$ mm at 3 GHz; |
| ΔSAR_{be} | in percent of SAR is the deviation between the measured SAR value, at the distance d_{be} from the boundary, and the analytical SAR value. |

The measured worst case boundary effect SARuncertainty[%] for scanning distances larger than 4mm is 1.0% Limit ,2%).



4 MEASUREMENT UNCERTAINTY

The guidelines outlined in the IEC/IEEE 62209-1528 and FCC KDB865664 D01 standards were followed to generate the measurement uncertainty associated with a SAR probe calibration using the waveguide or calorimetric cell technique depending on the frequency.

The estimated expanded uncertainty (k=2) in calibration for SAR (W/kg) is +/-11% for the frequency range 150-450MHz.

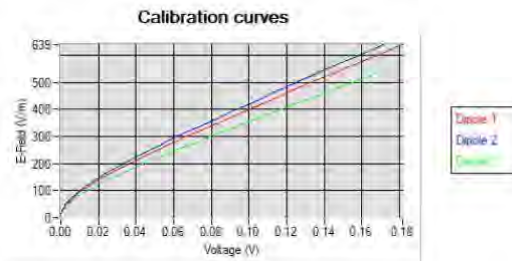
The estimated expanded uncertainty (k=2) in calibration for SAR (W/kg) is +/-14% for the frequency range 600-7500MHz.

5 CALIBRATION RESULTS

| Ambient condition | |
|--------------------|-------------|
| Liquid Temperature | 20 +/- 1 °C |
| Lab Temperature | 20 +/- 1 °C |
| Lab Humidity | 30-70 % |

5.1 CALIBRATION IN AIR

The following curve represents the measurement in waveguide of the voltage picked up by the probe toward the E-field generated inside the waveguide.



From this curve, the sensitivity in air is calculated using the below formula.

$$E^2 = \sum_{i=1}^3 \frac{V_i (1 + V_i / DCP_i)}{Norm_i}$$

where

V_i =voltage readings on the 3 channels of the probe

DCP_i =diode compression point given below for the 3 channels of the probe

$Norm_i$ =dipole sensitivity given below for the 3 channels of the probe



| Normx dipole 1 ($\mu\text{V}/(\text{V}/\text{m}^2)$) | Normy dipole 2 ($\mu\text{V}/(\text{V}/\text{m}^2)$) | Normz dipole 3 ($\mu\text{V}/(\text{V}/\text{m}^2)$) |
|--|--|--|
| 1.21 | 1.09 | 1.56 |

| DCP dipole 1 (mV) | DCP dipole 2 (mV) | DCP dipole 3 (mV) |
|-------------------|-------------------|-------------------|
| 106 | 109 | 103 |

5.2 CALIBRATION IN LIQUID

The calorimeter cell or the waveguide is used to determine the calibration in liquid using the formula below.

$$ConvF = \frac{E_{liquid}^2}{E_{air}^2}$$

The E-field in the liquid is determined from the SAR measurement according to the below formula.

$$E_{liquid}^2 = \frac{\rho SAR}{\sigma}$$

where

σ =the conductivity of the liquid

ρ =the volumetric density of the liquid

SAR=the SAR measured from the formula that depends on the setup used. The SAR formulas are given below

For the calorimeter cell (150-450 MHz), the formula is:

$$SAR = c \frac{dT}{dt}$$

where

c =the specific heat for the liquid

dT/dt =the temperature rises over the time

For the waveguide setup (600-75000 MHz), the formula is:

$$SAR = \frac{4Pw}{ab\delta} e^{-\frac{z-z_0}{\delta}}$$

where

a =the larger cross-sectional of the waveguide

b =the smaller cross-sectional of the waveguide

δ =the skin depth for the liquid in the waveguide

Pw =the power delivered to the liquid

Page: 7/11

Template ACR.00D.N.YEMVGB.ISSUE COMOSAR Probe v1.

This document shall not be reproduced, except in full or in part, without the written approval of MVG. The information contained herein is to be used only for the purpose for which it is submitted and is not to be released in whole or part without written approval of MVG.

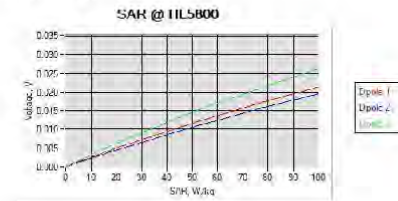
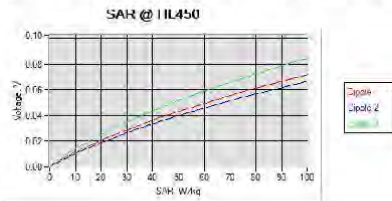
CO.LTD



The below table summarize the ConvF for the calibrated liquid. The curves give examples for the measured SAR depending on the voltage in some liquid.

| Liquid | Frequency (MHz ²) | ConvF |
|--------|-------------------------------|-------|
| HL450 | 450 | 0.86 |
| BL450 | 450 | 0.78 |
| HL750 | 750 | 0.80 |
| BL750 | 750 | 0.87 |
| HL850 | 835 | 0.81 |
| BL850 | 835 | 0.80 |
| HL900 | 900 | 0.76 |
| BL900 | 900 | 0.87 |
| HL1800 | 1800 | 0.96 |
| BL1800 | 1800 | 1.01 |
| HL1900 | 1900 | 1.04 |
| BL1900 | 1900 | 1.11 |
| HL2100 | 2100 | 1.00 |
| BL2100 | 2100 | 1.16 |
| HL2300 | 2300 | 1.11 |
| BL2300 | 2300 | 1.23 |
| HL2450 | 2450 | 1.11 |
| BL2450 | 2450 | 1.32 |
| HL2600 | 2600 | 1.03 |
| BL2600 | 2600 | 1.19 |
| HL5200 | 5200 | 1.18 |
| BL5200 | 5200 | 0.97 |
| HL5400 | 5400 | 1.17 |
| BL5400 | 5400 | 1.00 |
| HL5600 | 5600 | 1.20 |
| BL5600 | 5600 | 0.95 |
| HL5800 | 5800 | 1.15 |
| BL5800 | 5800 | 1.05 |

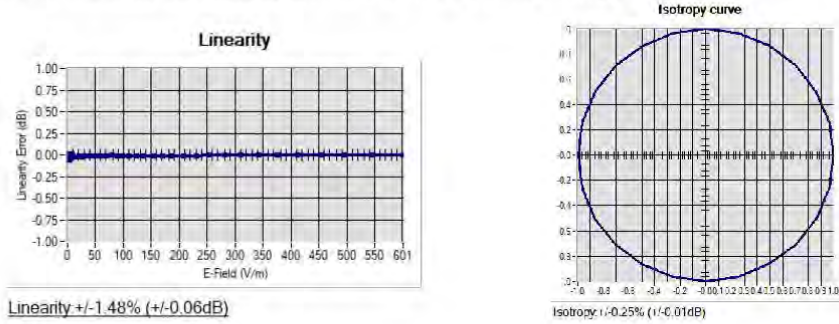
(*) Frequency validity is +/-50MHz below 600MHz, +/-100MHz from 600MHz to 6GHz and +/-700MHz above 6GHz





6 VERIFICATION RESULTS

The figures below represent the measured linearity and axial isotropy for this probe. The probe specification is +/-0.2 dB for linearity and +/-0.15 dB for axial isotropy.




7 LIST OF EQUIPMENT

| Equipment Summary Sheet | | | | |
|------------------------------------|-------------------------|------------------------|---|---|
| Equipment Description | Manufacturer / Model | Identification No. | Current Calibration Date | Next Calibration Date |
| CALIPROBE Test Bench | Version 2 | NA | Validated. No cal required. | Validated. No cal required. |
| Network Analyzer | Rohde & Schwarz ZVM | 100203 | 08/2021 | 08/2024 |
| Network Analyzer | Agilent 8753ES | MY40003210 | 10/2019 | 10/2023 |
| Network Analyzer – Calibration kit | HP 85033D | 3423A08186 | 06/2021 | 06/2027 |
| Network Analyzer – Calibration kit | Rohde & Schwarz ZV-Z235 | 101223 | 07/2022 | 07/2025 |
| Multimeter | Keithley 2000 | 4013982 | 02/2023 | 02/2026 |
| Signal Generator | Rohde & Schwarz SMB | 106589 | 03/2022 | 03/2025 |
| Amplifier | MVG | MODU-023-C-0002 | Characterized prior to test. No cal required. | Characterized prior to test. No cal required. |
| Power Meter | NI-USB 5680 | 170100013 | 06/2021 | 06/2024 |
| Power Meter | Keysight U2000A | SN: MY62340002 | 10/2022 | 10/2025 |
| Directional Coupler | Krytar 158020 | 131467 | Characterized prior to test. No cal required. | Characterized prior to test. No cal required. |
| Fluoroptic Thermometer | LumaSense Luxtron 812 | 94264 | 09/2022 | 09/2025 |
| Coaxial cell | MVG | SN 32/16 COAXCELL_1 | Validated. No cal required. | Validated. No cal required. |
| Waveguide | MVG | SN 32/16 WG2_1 | Validated. No cal required. | Validated. No cal required. |
| Liquid transition | MVG | SN 32/16 WGLIQ_OG600_1 | Validated. No cal required. | Validated. No cal required. |
| Waveguide | MVG | SN 32/16 WG4_1 | Validated. No cal required. | Validated. No cal required. |
| Liquid transition | MVG | SN 32/16 WGLIQ_OG900_1 | Validated. No cal required. | Validated. No cal required. |
| Waveguide | MVG | SN 32/16 WG6_1 | Validated. No cal required. | Validated. No cal required. |
| Liquid transition | MVG | SN 32/16 WGLIQ_1G500_1 | Validated. No cal required. | Validated. No cal required. |
| Waveguide | MVG | SN 32/16 WG8_1 | Validated. No cal required. | Validated. No cal required. |

Page: 10/11

Template ACR.DDD.N.YY/MVGB/ISSUE COMOSAR Probe v1.

This document shall not be reproduced, except in full or in part, without the written approval of MVG. The information contained herein is to be used only for the purpose for which it is submitted and is not to be released in whole or part without written approval of MVG.


COMOSAR E-FIELD PROBE CALIBRATION REPORT

Ref. ACR.199.1.23.BES.A

| | | | | |
|----------------------------------|--------------|----------------------------|--------------------------------|--------------------------------|
| Liquid transition | MVG | SN 32/16 WGLIQ_1G800B_1 | Validated. No cal required. | Validated. No cal required. |
| Liquid transition | MVG | SN 32/16 WGLIQ_1G800H_1 | Validated. No cal required. | Validated. No cal required. |
| Waveguide | MVG | SN 32/16 WG10_1 | Validated. No cal required. | Validated. No cal required. |
| Liquid transition | MVG | SN 32/16 WGLIQ_3G500_1 | Validated. No cal required. | Validated. No cal required. |
| Waveguide | MVG | SN 32/16 WG12_1 | Validated. No cal required. | Validated. No cal required. |
| Liquid transition | MVG | SN 32/16 WGLIQ_5G000_1 | Validated. No cal required. | Validated. No cal required. |
| Waveguide | MVG | SN 32/16 WG14_1 | Validated. No cal required. | Validated. No cal required. |
| Liquid transition | MVG | SN 32/16 WGLIQ_7G000_1 | Validated. No cal required. | Validated. No cal required. |
| Temperature / Humidity Sensor | Testo 184 H1 | 44225320 | 06/2021 | 06/2024 |

Page: 11/11

Template ACR.DDD.N.YE.MVGBJSSUE COMOSAR Probe vE.

This document shall not be reproduced, except in full or in part, without the written approval of MVG. The information contained herein is to be used only for the purpose for which it is submitted and is not to be released in whole or part without written approval of MVG.



SAR Reference Dipole Calibration Report

Ref : ACR.329.8.21.BES.A

SHENZHEN BCTC TECHNOLOGY CO., LTD.

1 ~2/ F, NO. B FACTORY BUILDING, PENGZHOU
INDUSTRIAL PARK, FUYUAN 1ST ROAD,
TANGWEI COMMUNITY, FUHAI STREET, BAO'AN
DISTRICT, SHENZHEN, GUANGDONG, CHINA

MVG COMOSAR REFERENCE DIPOLE

FREQUENCY: 750 MHZ

SERIAL NO.: SN 47/21 DIP 0G750-620

Calibrated at MVG

Z.I. de la pointe du diable

Technopôle Brest Iroise – 295 avenue Alexis de Rochon

29280 PLOUZANE - FRANCE

Calibration date: 11/25/2021



Accreditations #2-6789 and #2-6814
Scope available on www.cofrac.fr

The use of the Cofrac brand and the accreditation references is prohibited from any reproduction.

Summary:

This document presents the method and results from an accredited SAR reference dipole calibration performed in MVG using the COMOSAR test bench. All calibration results are traceable to national metrology institutions.

Page: 1/13


SAR REFERENCE DIPOLE CALIBRATION REPORT

Ref ACR.329.8.21.BES.A

| | <i>Name</i> | <i>Function</i> | <i>Date</i> | <i>Signature</i> |
|----------------------|--------------|---------------------|-------------|---------------------|
| <i>Prepared by :</i> | Jérôme Luc | Technical Manager | 11/25/2021 | <i>JS</i> |
| <i>Checked by :</i> | Jérôme Luc | Technical Manager | 11/25/2021 | <i>JS</i> |
| <i>Approved by :</i> | Yann Toutain | Laboratory Director | 11/25/2021 | <i>Yann TOUTAIN</i> |

2021.11.25
11:51:55 +01'00'

| | <i>Customer Name</i> |
|-----------------------|--|
| <i>Distribution :</i> | Shenzhen BCTC Technology Co., Ltd. |

| <i>Issue</i> | <i>Name</i> | <i>Date</i> | <i>Modifications</i> |
|--------------|-------------|-------------|----------------------|
| A | Jérôme Luc | 11/25/2021 | Initial release |
| | | | |
| | | | |

Page: 2/13

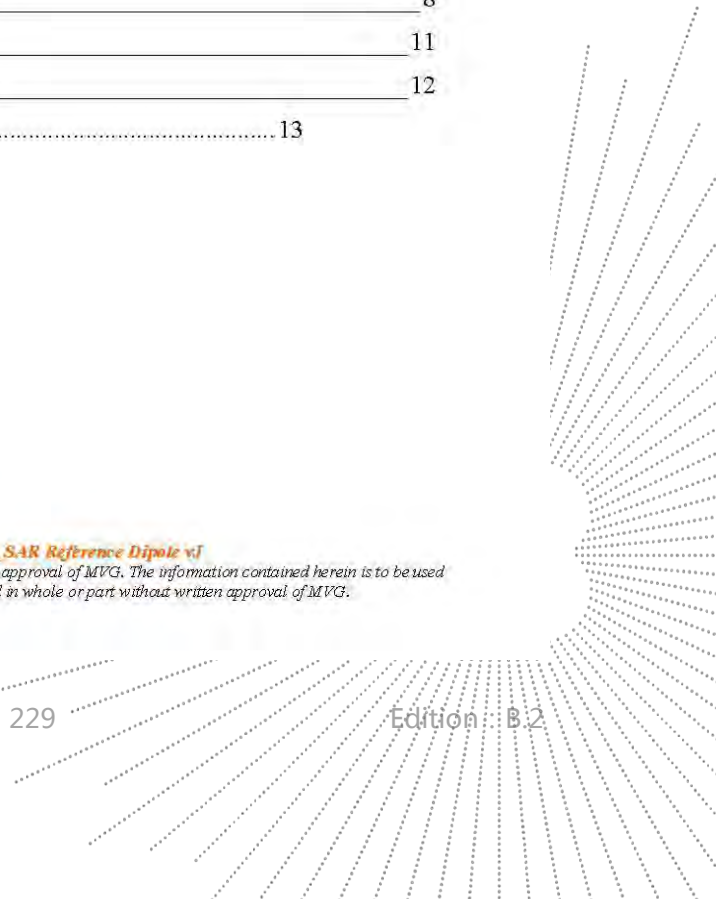
Templon ACR.DDD.N.YE.MVGBISSUE SAR Reference Dipole v1

This document shall not be reproduced, except in full or in part, without the written approval of MVG. The information contained herein is to be used only for the purpose for which it is submitted and is not to be released in whole or part without written approval of MVG.

CO.LTD


TABLE OF CONTENTS

| | | |
|-----|--|----|
| 1 | Introduction..... | 4 |
| 2 | Device Under Test | 4 |
| 3 | Product Description | 4 |
| 3.1 | General Information | 4 |
| 4 | Measurement Method | 5 |
| 4.1 | Return Loss Requirements | 5 |
| 4.2 | Mechanical Requirements | 5 |
| 5 | Measurement Uncertainty..... | 5 |
| 5.1 | Return Loss | 5 |
| 5.2 | Dimension Measurement | 5 |
| 5.3 | Validation Measurement | 5 |
| 6 | Calibration Measurement Results..... | 6 |
| 6.1 | Return Loss and Impedance In Head Liquid | 6 |
| 6.2 | Return Loss and Impedance In Body Liquid | 6 |
| 6.3 | Mechanical Dimensions | 7 |
| 7 | Validation measurement | 7 |
| 7.1 | Head Liquid Measurement | 8 |
| 7.2 | SAR Measurement Result With Head Liquid | 8 |
| 7.3 | Body Liquid Measurement | 11 |
| 7.4 | SAR Measurement Result With Body Liquid | 12 |
| 8 | List of Equipment | 13 |





1 INTRODUCTION

This document contains a summary of the requirements set forth by the IEC/IEEE 62209-1528 and FCC KDB865664 D01 standards for reference dipoles used for SAR measurement system validations and the measurements that were performed to verify that the product complies with the fore mentioned standards.

2 DEVICE UNDER TEST

| Device Under Test | |
|--------------------------------|----------------------------------|
| Device Type | COMOSAR 750 MHz REFERENCE DIPOLE |
| Manufacturer | MVG |
| Model | SID750 |
| Serial Number | SN 47/21 DIP 0G750-620 |
| Product Condition (new / used) | New |

3 PRODUCT DESCRIPTION

3.1 GENERAL INFORMATION

MVG's COMOSAR Validation Dipoles are built in accordance to the IEC/IEEE 62209-1528 and FCC KDB865664 D01 standards. The product is designed for use with the COMOSAR test bench only.

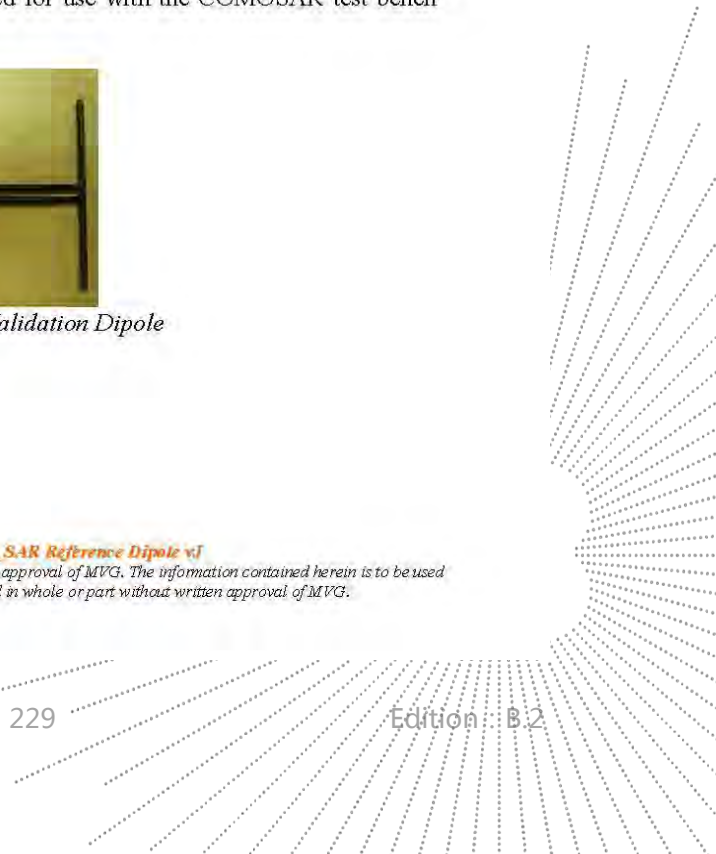


Figure 1 – MVG COMOSAR Validation Dipole

Page: 4/13

Template_ACR.DDD.N.YE.MVGB.ISSUE_SAR Reference Dipole v1

This document shall not be reproduced, except in full or in part, without the written approval of MVG. The information contained herein is to be used only for the purpose for which it is submitted and is not to be released in whole or part without written approval of MVG.





4 MEASUREMENT METHOD

The IEC/IEEE 62209-1528 and FCC KDB865664 D01 standards provide requirements for reference dipoles used for system validation measurements. The following measurements were performed to verify that the product complies with the fore mentioned standards.

4.1 RETURN LOSS REQUIREMENTS

The dipole used for SAR system validation measurements and checks must have a return loss of -20 dB or better. The return loss measurement shall be performed against a liquid filled flat phantom, with the phantom constructed as outlined in the fore mentioned standards. A direct method is used with a network analyser and its calibration kit, both with a valid ISO17025 calibration.

4.2 MECHANICAL REQUIREMENTS

The IEC/IEEE 62209-1528 and FCC KDB865664 D01 standards specify the mechanical components and dimensions of the validation dipoles, with the dimension's frequency and phantom shell thickness dependent. The COMOSAR test bench employs a 2 mm phantom shell thickness therefore the dipoles sold for use with the COMOSAR test bench comply with the requirements set forth for a 2 mm phantom shell thickness. A direct method is used with a ISO17025 calibrated caliper.

5 MEASUREMENT UNCERTAINTY

All uncertainties listed below represent an expanded uncertainty expressed at approximately the 95% confidence level using a coverage factor of $k=2$, traceable to the Internationally Accepted Guides to Measurement Uncertainty.

5.1 RETURN LOSS

The following uncertainties apply to the return loss measurement:

| Frequency band | Expanded Uncertainty on Return Loss |
|----------------|-------------------------------------|
| 400-6000MHz | 0.08 LIN |

5.2 DIMENSION MEASUREMENT

The following uncertainties apply to the dimension measurements:

| Length (mm) | Expanded Uncertainty on Length |
|-------------|--------------------------------|
| 0 - 300 | 0.20 mm |
| 300 - 450 | 0.44 mm |

5.3 VALIDATION MEASUREMENT

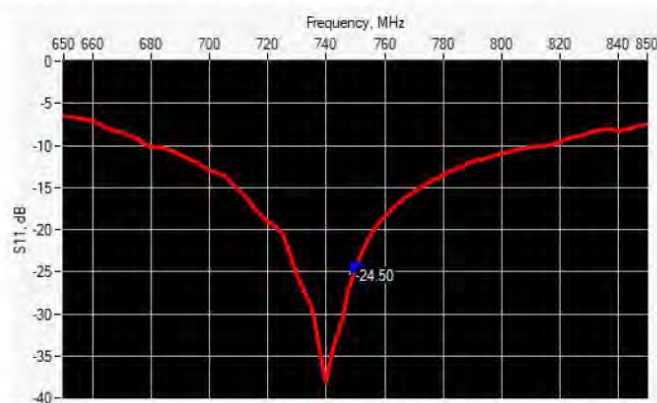
The guidelines outlined in the IEC/IEEE 62209-1528 and FCC KDB865664 D01 standards were followed to generate the measurement uncertainty for validation measurements.



| Scan Volume | Expanded Uncertainty |
|-------------|----------------------|
| 1 g | 19 % (SAR) |
| 10 g | 19 % (SAR) |

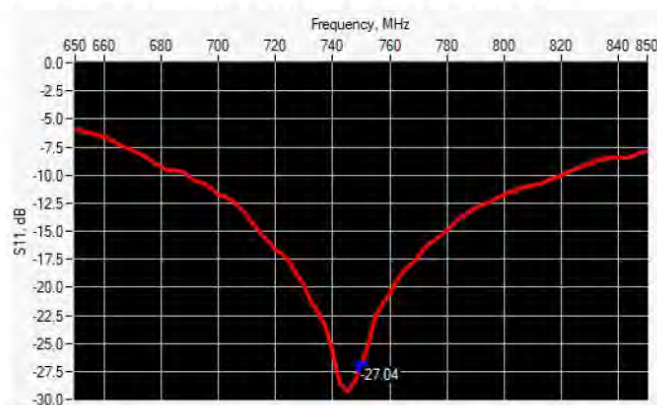
6 CALIBRATION MEASUREMENT RESULTS

6.1 RETURN LOSS AND IMPEDANCE IN HEAD LIQUID



| Frequency (MHz) | Return Loss (dB) | Requirement (dB) | Impedance |
|-----------------|------------------|------------------|--------------------------------|
| 750 | -24.50 | -20 | 55.7 Ω - 1.7 j Ω |

6.2 RETURN LOSS AND IMPEDANCE IN BODY LIQUID



| Frequency (MHz) | Return Loss (dB) | Requirement (dB) | Impedance |
|-----------------|------------------|------------------|--------------------------------|
| 750 | -27.04 | -20 | 53.8 Ω + 2.3 j Ω |



6.3 MECHANICAL DIMENSIONS

| Frequency MHz | L mm | | h mm | | d mm | |
|---------------|-------------|----------|-------------|----------|------------|----------|
| | required | measured | required | measured | required | measured |
| 300 | 420.0 ±1 %. | | 250.0 ±1 %. | | 6.35 ±1 %. | |
| 450 | 290.0 ±1 %. | | 166.7 ±1 %. | | 6.35 ±1 %. | |
| 750 | 176.0 ±1 %. | 177.28 | 100.0 ±1 %. | 99.79 | 6.35 ±1 %. | 6.35 |
| 835 | 161.0 ±1 %. | | 89.8 ±1 %. | | 3.6 ±1 %. | |
| 900 | 149.0 ±1 %. | | 83.3 ±1 %. | | 3.6 ±1 %. | |
| 1450 | 89.1 ±1 %. | | 51.7 ±1 %. | | 3.6 ±1 %. | |
| 1500 | 86.2 ±1 %. | | 50.0 ±1 %. | | 3.6 ±1 %. | |
| 1640 | 79.0 ±1 %. | | 45.7 ±1 %. | | 3.6 ±1 %. | |
| 1750 | 75.2 ±1 %. | | 42.9 ±1 %. | | 3.6 ±1 %. | |
| 1800 | 72.0 ±1 %. | | 41.7 ±1 %. | | 3.6 ±1 %. | |
| 1900 | 68.0 ±1 %. | | 39.5 ±1 %. | | 3.6 ±1 %. | |
| 1950 | 66.3 ±1 %. | | 38.5 ±1 %. | | 3.6 ±1 %. | |
| 2000 | 64.5 ±1 %. | | 37.5 ±1 %. | | 3.6 ±1 %. | |
| 2100 | 61.0 ±1 %. | | 35.7 ±1 %. | | 3.6 ±1 %. | |
| 2300 | 55.5 ±1 %. | | 32.6 ±1 %. | | 3.6 ±1 %. | |
| 2450 | 51.5 ±1 %. | | 30.4 ±1 %. | | 3.6 ±1 %. | |
| 2600 | 48.5 ±1 %. | | 28.8 ±1 %. | | 3.6 ±1 %. | |
| 3000 | 41.5 ±1 %. | | 25.0 ±1 %. | | 3.6 ±1 %. | |
| 3300 | - | | - | | - | |
| 3500 | 37.0 ±1 %. | | 26.4 ±1 %. | | 3.6 ±1 %. | |
| 3700 | 34.7 ±1 %. | | 26.4 ±1 %. | | 3.6 ±1 %. | |
| 3900 | - | | - | | - | |
| 4200 | - | | - | | - | |
| 4600 | - | | - | | - | |
| 4900 | - | | - | | - | |

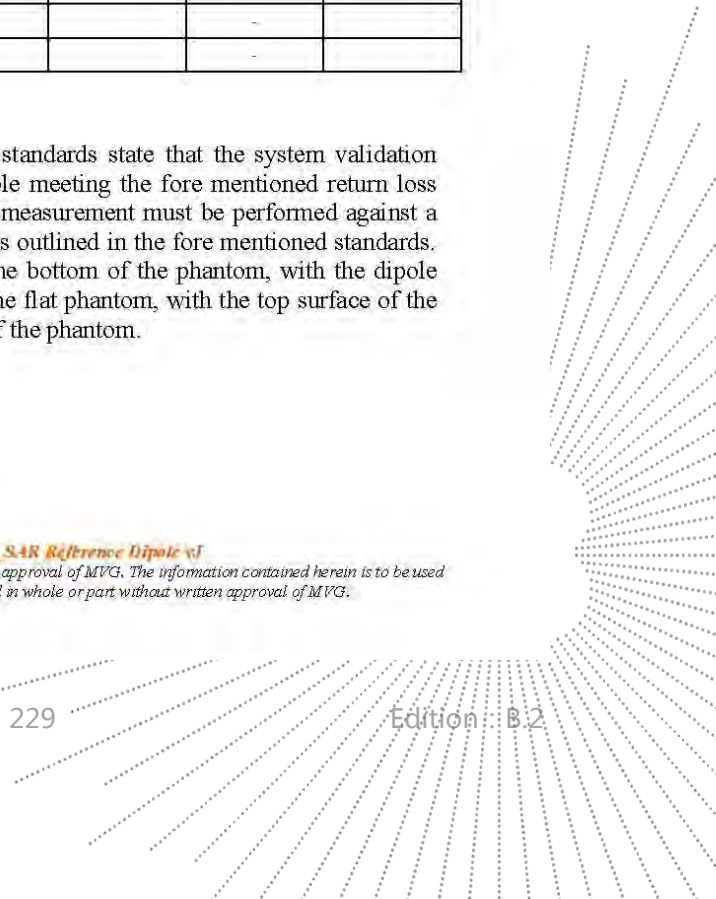
7 VALIDATION MEASUREMENT

The IEC/IEEE 62209-1528 and FCC KDB865664 D01 standards state that the system validation measurements must be performed using a reference dipole meeting the fore mentioned return loss and mechanical dimension requirements. The validation measurement must be performed against a liquid filled flat phantom, with the phantom constructed as outlined in the fore mentioned standards. Per the standards, the dipole shall be positioned below the bottom of the phantom, with the dipole length centered and parallel to the longest dimension of the flat phantom, with the top surface of the dipole at the described distance from the bottom surface of the phantom.

Page: 7/13

Template_ACR.DDD.N.YE.MVGB.ISSUE_SAR Reference Dipole v1

This document shall not be reproduced, except in full or in part, without the written approval of MVG. The information contained herein is to be used only for the purpose for which it is submitted and is not to be released in whole or part without written approval of MVG.




7.1 HEAD LIQUID MEASUREMENT

| Frequency MHz | Relative permittivity (ϵ_r) | | Conductivity (σ) S/m | |
|------------------|--|----------|-------------------------------|----------|
| | required | measured | required | measured |
| 300 | 45.3 \pm 10 % | | 0.87 \pm 10 % | |
| 450 | 43.5 \pm 10 % | | 0.87 \pm 10 % | |
| 750 | 41.9 \pm 10 % | 41.0 | 0.89 \pm 10 % | 0.82 |
| 835 | 41.5 \pm 10 % | | 0.90 \pm 10 % | |
| 900 | 41.5 \pm 10 % | | 0.97 \pm 10 % | |
| 1450 | 40.5 \pm 10 % | | 1.20 \pm 10 % | |
| 1500 | 40.4 \pm 10 % | | 1.23 \pm 10 % | |
| 1640 | 40.2 \pm 10 % | | 1.31 \pm 10 % | |
| 1750 | 40.1 \pm 10 % | | 1.37 \pm 10 % | |
| 1800 | 40.0 \pm 10 % | | 1.40 \pm 10 % | |
| 1900 | 40.0 \pm 10 % | | 1.40 \pm 10 % | |
| 1950 | 40.0 \pm 10 % | | 1.40 \pm 10 % | |
| 2000 | 40.0 \pm 10 % | | 1.40 \pm 10 % | |
| 2100 | 39.8 \pm 10 % | | 1.49 \pm 10 % | |
| 2300 | 39.5 \pm 10 % | | 1.67 \pm 10 % | |
| 2450 | 39.2 \pm 10 % | | 1.80 \pm 10 % | |
| 2600 | 39.0 \pm 10 % | | 1.96 \pm 10 % | |
| 3000 | 38.5 \pm 10 % | | 2.40 \pm 10 % | |
| 3300 | 38.2 \pm 10 % | | 2.71 \pm 10 % | |
| 3500 | 37.9 \pm 10 % | | 2.91 \pm 10 % | |
| 3700 | 37.7 \pm 10 % | | 3.12 \pm 10 % | |
| 3900 | 37.5 \pm 10 % | | 3.32 \pm 10 % | |
| 4200 | 37.1 \pm 10 % | | 3.63 \pm 10 % | |
| 4600 | 36.7 \pm 10 % | | 4.04 \pm 10 % | |
| 4900 | 36.3 \pm 10 % | | 4.35 \pm 10 % | |

7.2 SAR MEASUREMENT RESULT WITH HEAD LIQUID

The IEC/IEEE 62209-1528 and FCC KDB865664 D01 standards state that the system validation measurements should produce the SAR values shown below (for phantom thickness of 2 mm), within the uncertainty for the system validation. All SAR values are normalized to 1 W forward power. In bracket, the measured SAR is given with the used input power.

Page: 8/13

Templam_ACR.DDD.N.YEMVGBISSUE_SAR Reference Dipole v1

This document shall not be reproduced, except in full or in part, without the written approval of MVG. The information contained herein is to be used only for the purpose for which it is submitted and is not to be released in whole or part without written approval of MVG.

CO.LTD


SAR REFERENCE DIPOLE CALIBRATION REPORT

Ref ACR 329.8.21.BES A

| | |
|---|--|
| Software | OPENSAR V5 |
| Phantom | SN 13/09 SAM68 |
| Probe | SN 41/18 EPGO333 |
| Liquid | Head Liquid Values: eps' : 41.0 sigma : 0.82 |
| Distance between dipole center and liquid | 15.0 mm |
| Area scan resolution | dx=8mm/dy=8mm |
| Zoon Scan Resolution | dx=8mm/dy=8mm/dz=5mm |
| Frequency | 750 MHz |
| Input power | 20 dBm |
| Liquid Temperature | 20 +/- 1 °C |
| Lab Temperature | 20 +/- 1 °C |
| Lab Humidity | 30-70 % |

| Frequency MHz | 1 g SAR (W/kg/W) | | 10 g SAR (W/kg/W) | |
|------------------|------------------|-------------|-------------------|-------------|
| | required | measured | required | measured |
| 300 | 2.85 | | 1.94 | |
| 450 | 4.58 | | 3.06 | |
| 750 | 8.49 | 8.58 (0.86) | 5.55 | 5.59 (0.56) |
| 835 | 9.56 | | 6.22 | |
| 900 | 10.9 | | 6.99 | |
| 1450 | 29 | | 16 | |
| 1500 | 30.5 | | 16.8 | |
| 1640 | 34.2 | | 18.4 | |
| 1750 | 36.4 | | 19.3 | |
| 1800 | 38.4 | | 20.1 | |
| 1900 | 39.7 | | 20.5 | |
| 1950 | 40.5 | | 20.9 | |
| 2000 | 41.1 | | 21.1 | |
| 2100 | 43.6 | | 21.9 | |
| 2300 | 48.7 | | 23.3 | |
| 2450 | 52.4 | | 24 | |
| 2600 | 55.3 | | 24.6 | |
| 3000 | 63.8 | | 25.7 | |
| 3300 | - | | - | |
| 3500 | 67.1 | | 25 | |
| 3700 | 67.4 | | 24.2 | |
| 3900 | - | | - | |
| 4200 | - | | - | |
| 4600 | - | | - | |
| 4900 | - | | - | |

Page: 9/13

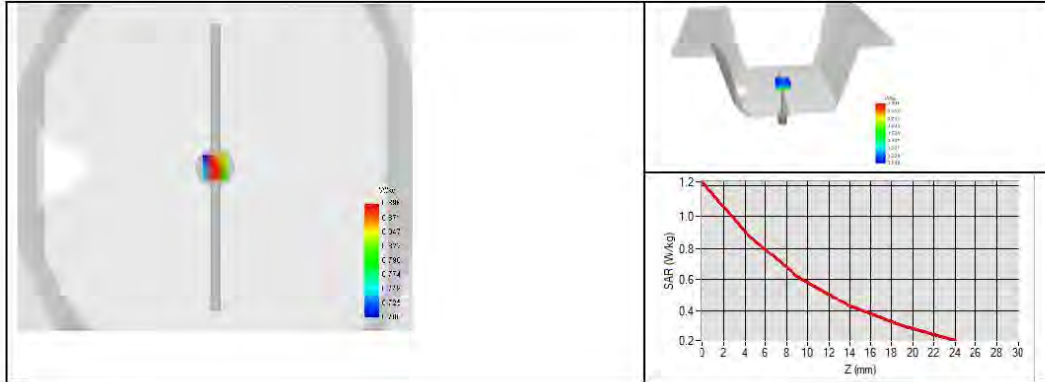
Templon_ACR.DDD.N.YEMVGBISSUE_SAR Reference Dipole v1

This document shall not be reproduced, except in full or in part, without the written approval of MVG. The information contained herein is to be used only for the purpose for which it is submitted and is not to be released in whole or part without written approval of MVG.

SHENZHEN


SAR REFERENCE DIPOLE CALIBRATION REPORT

Ref. ACR.329.8.21.BES.A





7.3 BODY LIQUID MEASUREMENT

| Frequency MHz | Relative permittivity (ϵ_r') | | Conductivity (σ) S/m | |
|------------------|---|----------|-------------------------------|----------|
| | required | measured | required | measured |
| 150 | 61.9 ± 10 % | | 0.80 ± 10 % | |
| 300 | 58.2 ± 10 % | | 0.92 ± 10 % | |
| 450 | 56.7 ± 10 % | | 0.94 ± 10 % | |
| 750 | 55.5 ± 10 % | 52.9 | 0.96 ± 10 % | 0.89 |
| 835 | 55.2 ± 10 % | | 0.97 ± 10 % | |
| 900 | 55.0 ± 10 % | | 1.05 ± 10 % | |
| 915 | 55.0 ± 10 % | | 1.06 ± 10 % | |
| 1450 | 54.0 ± 10 % | | 1.30 ± 10 % | |
| 1610 | 53.8 ± 10 % | | 1.40 ± 10 % | |
| 1800 | 53.3 ± 10 % | | 1.52 ± 10 % | |
| 1900 | 53.3 ± 10 % | | 1.52 ± 10 % | |
| 2000 | 53.3 ± 10 % | | 1.52 ± 10 % | |
| 2100 | 53.2 ± 10 % | | 1.62 ± 10 % | |
| 2300 | 52.9 ± 10 % | | 1.81 ± 10 % | |
| 2450 | 52.7 ± 10 % | | 1.95 ± 10 % | |
| 2600 | 52.5 ± 10 % | | 2.16 ± 10 % | |
| 3000 | 52.0 ± 10 % | | 2.73 ± 10 % | |
| 3300 | 51.6 ± 10 % | | 3.08 ± 10 % | |
| 3500 | 51.3 ± 10 % | | 3.31 ± 10 % | |
| 3700 | 51.0 ± 10 % | | 3.55 ± 10 % | |
| 3900 | 50.8 ± 10 % | | 3.78 ± 10 % | |
| 4200 | 50.4 ± 10 % | | 4.13 ± 10 % | |
| 4600 | 49.8 ± 10 % | | 4.60 ± 10 % | |
| 4900 | 49.4 ± 10 % | | 4.95 ± 10 % | |
| 5200 | 49.0 ± 10 % | | 5.30 ± 10 % | |
| 5300 | 48.9 ± 10 % | | 5.42 ± 10 % | |
| 5400 | 48.7 ± 10 % | | 5.53 ± 10 % | |
| 5500 | 48.6 ± 10 % | | 5.65 ± 10 % | |
| 5600 | 48.5 ± 10 % | | 5.77 ± 10 % | |
| 5800 | 48.2 ± 10 % | | 6.00 ± 10 % | |

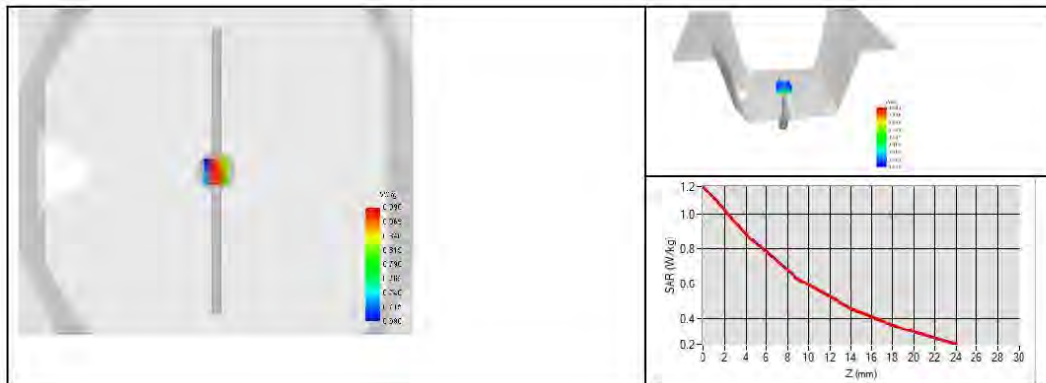

SAR REFERENCE DIPOLE CALIBRATION REPORT

Ref ACR.329.8.21.BES.A

7.4 SAR MEASUREMENT RESULT WITH BODY LIQUID

| | |
|---|---|
| Software | OPENSAR V5 |
| Phantom | SN 13/09 SAM68 |
| Probe | SN 41/18 EPGO333 |
| Liquid | Body Liquid Values: ϵ_p : 52.9 σ : 0.89 |
| Distance between dipole center and liquid | 15.0 mm |
| Area scan resolution | $dx=8mm/dy=8mm$ |
| Zoon Scan Resolution | $dx=8mm/dy=8mm/dz=5mm$ |
| Frequency | 750 MHz |
| Input power | 20 dBm |
| Liquid Temperature | 20 +/- 1 °C |
| Lab Temperature | 20 +/- 1 °C |
| Lab Humidity | 30-70 % |

| Frequency MHz | 1 g SAR (W/kg/W) | 10 g SAR (W/kg/W) |
|---------------|------------------|-------------------|
| | measured | measured |
| 750 | 8.41 (0.84) | 5.66 (0.57) |




8 LIST OF EQUIPMENT

| Equipment Summary Sheet | | | | |
|------------------------------------|-------------------------|--------------------|---|---|
| Equipment Description | Manufacturer / Model | Identification No. | Current Calibration Date | Next Calibration Date |
| SAM Phantom | MVG | SN 13/09 SAM68 | Validated. No cal required. | Validated. No cal required. |
| COMOSAR Test Bench | Version 3 | NA | Validated. No cal required. | Validated. No cal required. |
| Network Analyzer | Rohde & Schwarz ZVM | 100203 | 08/2021 | 08/2024 |
| Network Analyzer | Agilent 8753ES | MY40003210 | 10/2019 | 10/2022 |
| Network Analyzer – Calibration kit | Rohde & Schwarz ZV-Z235 | 101223 | 05/2019 | 05/2022 |
| Network Analyzer – Calibration kit | HP 85033D | 3423A08186 | 06/2021 | 06/2027 |
| Calipers | Mitutoyo | SN 0009732 | 10/2019 | 10/2022 |
| Reference Probe | MVG | SN 41/18 EPGO333 | 10/2021 | 10/2022 |
| Multimeter | Keithley 2000 | 1160271 | 02/2020 | 02/2023 |
| Signal Generator | Rohde & Schwarz SMB | 106589 | 04/2019 | 04/2022 |
| Amplifier | MVG | MODU-023-C-0002 | Characterized prior to test. No cal required. | Characterized prior to test. No cal required. |
| Power Meter | NI-USB 5680 | 170100013 | 06/2021 | 06/2024 |
| Power Meter | Rohde & Schwarz NRVD | 832839-056 | 11/2019 | 11/2022 |
| Directional Coupler | Krytar 158020 | 131467 | Characterized prior to test. No cal required. | Characterized prior to test. No cal required. |
| Temperature / Humidity Sensor | Testo 184 H1 | 44225320 | 06/2021 | 06/2024 |

Page: 13/13

Templon_ACR.DDD.N.YEMVGBISSUE_SAR Reference Dipole v1

This document shall not be reproduced, except in full or in part, without the written approval of MVG. The information contained herein is to be used only for the purpose for which it is submitted and is not to be released in whole or part without written approval of MVG.



SAR Reference Dipole Calibration Report

Ref : ACR.329.9.21.BES.A

SHENZHEN BCTC TECHNOLOGY CO., LTD.

1 ~2/ F, NO. B FACTORY BUILDING, PENGZHOU
INDUSTRIAL PARK, FUYUAN 1ST ROAD,
TANGWEI COMMUNITY, FUHAI STREET, BAO'AN
DISTRICT, SHENZHEN, GUANGDONG, CHINA

MVG COMOSAR REFERENCE DIPOLE

FREQUENCY: 835 MHZ

SERIAL NO.: SN 47/21 DIP 0G835-621

Calibrated at MVG

Z.I. de la pointe du diable

Technopôle Brest Iroise – 295 avenue Alexis de Rochon

29280 PLOUZANE - FRANCE

Calibration date: 11/25/2021



Accreditations #2-6789 and #2-6814
Scope available on www.cofrac.fr

The use of the Cofrac brand and the accreditation references is prohibited from any reproduction.

Summary:

This document presents the method and results from an accredited SAR reference dipole calibration performed in MVG using the COMOSAR test bench. All calibration results are traceable to national metrology institutions.

Page: 1/13


SAR REFERENCE DIPOLE CALIBRATION REPORT

Ref ACR.329.9.21.BES.A

| | <i>Name</i> | <i>Function</i> | <i>Date</i> | <i>Signature</i> |
|----------------------|--------------|---------------------|-------------|---------------------|
| <i>Prepared by :</i> | Jérôme Luc | Technical Manager | 11/25/2021 | <i>JS</i> |
| <i>Checked by :</i> | Jérôme Luc | Technical Manager | 11/25/2021 | <i>JS</i> |
| <i>Approved by :</i> | Yann Toutain | Laboratory Director | 11/25/2021 | <i>Yann TOUTAIN</i> |

2021.11.25

11:52:29 +01'00'

| | <i>Customer Name</i> |
|-----------------------|--|
| <i>Distribution :</i> | Shenzhen BCTC Technology Co., Ltd. |

| <i>Issue</i> | <i>Name</i> | <i>Date</i> | <i>Modifications</i> |
|--------------|-------------|-------------|----------------------|
| A | Jérôme Luc | 11/25/2021 | Initial release |
| | | | |
| | | | |

Page: 2/13

Template_ACR.DDD.N.YEMVGBISSUE_SAR Référence Dipole vJ

This document shall not be reproduced, except in full or in part, without the written approval of MVG. The information contained herein is to be used only for the purpose for which it is submitted and is not to be released in whole or part without written approval of MVG.

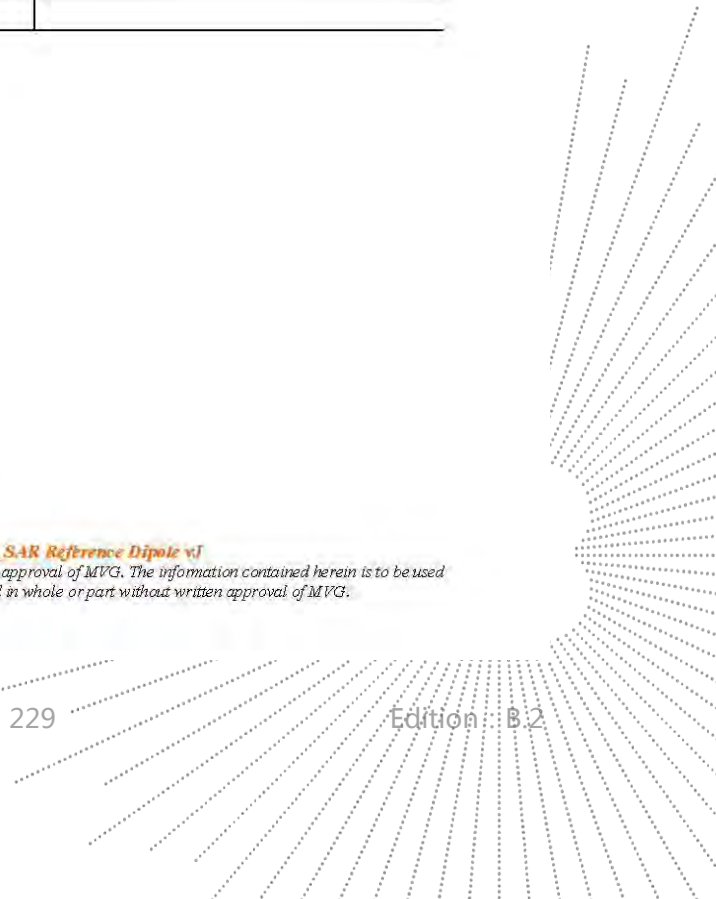



TABLE OF CONTENTS

| | | |
|-----|--|----|
| 1 | Introduction..... | 4 |
| 2 | Device Under Test | 4 |
| 3 | Product Description | 4 |
| 3.1 | General Information | 4 |
| 4 | Measurement Method | 5 |
| 4.1 | Return Loss Requirements | 5 |
| 4.2 | Mechanical Requirements | 5 |
| 5 | Measurement Uncertainty | 5 |
| 5.1 | Return Loss | 5 |
| 5.2 | Dimension Measurement | 5 |
| 5.3 | Validation Measurement | 5 |
| 6 | Calibration Measurement Results..... | 6 |
| 6.1 | Return Loss and Impedance In Head Liquid | 6 |
| 6.2 | Return Loss and Impedance In Body Liquid | 6 |
| 6.3 | Mechanical Dimensions | 7 |
| 7 | Validation measurement | 7 |
| 7.1 | Head Liquid Measurement | 8 |
| 7.2 | SAR Measurement Result With Head Liquid | 8 |
| 7.3 | Body Liquid Measurement | 11 |
| 7.4 | SAR Measurement Result With Body Liquid | 12 |
| 8 | List of Equipment | 13 |

Page: 3/13

Template_ACR.DDD.N.YY.MVGB.ISSUE_SAR Reference Dipole v1

This document shall not be reproduced, except in full or in part, without the written approval of MVG. The information contained herein is to be used only for the purpose for which it is submitted and is not to be released in whole or part without written approval of MVG.



1 INTRODUCTION

This document contains a summary of the requirements set forth by the IEC/IEEE 62209-1528 and FCC KDB865664 D01 standards for reference dipoles used for SAR measurement system validations and the measurements that were performed to verify that the product complies with the fore mentioned standards.

2 DEVICE UNDER TEST

| Device Under Test | |
|--------------------------------|----------------------------------|
| Device Type | COMOSAR 835 MHz REFERENCE DIPOLE |
| Manufacturer | MVG |
| Model | SID835 |
| Serial Number | SN 47/21 DIP 0G835-621 |
| Product Condition (new / used) | New |

3 PRODUCT DESCRIPTION

3.1 GENERAL INFORMATION

MVG's COMOSAR Validation Dipoles are built in accordance to the IEC/IEEE 62209-1528 and FCC KDB865664 D01 standards. The product is designed for use with the COMOSAR test bench only.



Figure 1 – MVG COMOSAR Validation Dipole

Page: 4/13

Template_ACR.DDD.N.YE.MVGB.ISSUE_SAR Reference Dipole v1

This document shall not be reproduced, except in full or in part, without the written approval of MVG. The information contained herein is to be used only for the purpose for which it is submitted and is not to be released in whole or part without written approval of MVG.



4 MEASUREMENT METHOD

The IEC/IEEE 62209-1528 and FCC KDB865664 D01 standards provide requirements for reference dipoles used for system validation measurements. The following measurements were performed to verify that the product complies with the fore mentioned standards.

4.1 RETURN LOSS REQUIREMENTS

The dipole used for SAR system validation measurements and checks must have a return loss of -20 dB or better. The return loss measurement shall be performed against a liquid filled flat phantom, with the phantom constructed as outlined in the fore mentioned standards. A direct method is used with a network analyser and its calibration kit, both with a valid ISO17025 calibration.

4.2 MECHANICAL REQUIREMENTS

The IEC/IEEE 62209-1528 and FCC KDB865664 D01 standards specify the mechanical components and dimensions of the validation dipoles, with the dimension's frequency and phantom shell thickness dependent. The COMOSAR test bench employs a 2 mm phantom shell thickness therefore the dipoles sold for use with the COMOSAR test bench comply with the requirements set forth for a 2 mm phantom shell thickness. A direct method is used with a ISO17025 calibrated caliper.

5 MEASUREMENT UNCERTAINTY

All uncertainties listed below represent an expanded uncertainty expressed at approximately the 95% confidence level using a coverage factor of $k=2$, traceable to the Internationally Accepted Guides to Measurement Uncertainty.

5.1 RETURN LOSS

The following uncertainties apply to the return loss measurement:

| Frequency band | Expanded Uncertainty on Return Loss |
|----------------|-------------------------------------|
| 400-6000MHz | 0.08 LIN |

5.2 DIMENSION MEASUREMENT

The following uncertainties apply to the dimension measurements:

| Length (mm) | Expanded Uncertainty on Length |
|-------------|--------------------------------|
| 0 - 300 | 0.20 mm |
| 300 - 450 | 0.44 mm |

5.3 VALIDATION MEASUREMENT

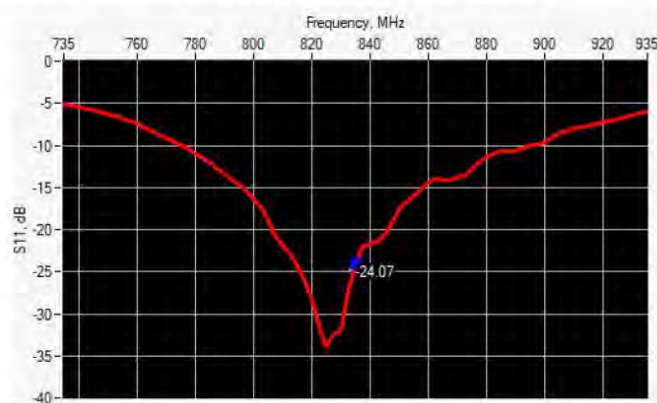
The guidelines outlined in the IEC/IEEE 62209-1528 and FCC KDB865664 D01 standards were followed to generate the measurement uncertainty for validation measurements.



| Scan Volume | Expanded Uncertainty |
|-------------|----------------------|
| 1 g | 19 % (SAR) |
| 10 g | 19 % (SAR) |

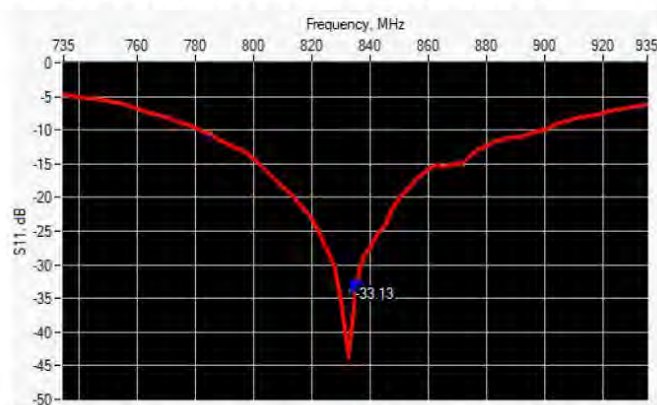
6 CALIBRATION MEASUREMENT RESULTS

6.1 RETURN LOSS AND IMPEDANCE IN HEAD LIQUID



| Frequency (MHz) | Return Loss (dB) | Requirement (dB) | Impedance |
|-----------------|------------------|------------------|--------------------------------|
| 835 | -24.07 | -20 | 55.3 Ω - 3.3 j Ω |

6.2 RETURN LOSS AND IMPEDANCE IN BODY LIQUID



| Frequency (MHz) | Return Loss (dB) | Requirement (dB) | Impedance |
|-----------------|------------------|------------------|--------------------------------|
| 835 | -33.13 | -20 | 52.2 Ω - 0.4 j Ω |



6.3 MECHANICAL DIMENSIONS

| Frequency MHz | L mm | | h mm | | d mm | |
|---------------|-------------|----------|-------------|----------|------------|----------|
| | required | measured | required | measured | required | measured |
| 300 | 420.0 ±1 %. | | 250.0 ±1 %. | | 6.35 ±1 %. | |
| 450 | 290.0 ±1 %. | | 166.7 ±1 %. | | 6.35 ±1 %. | |
| 750 | 176.0 ±1 %. | | 100.0 ±1 %. | | 6.35 ±1 %. | |
| 835 | 161.0 ±1 %. | 161.47 | 89.8 ±1 %. | 89.78 | 3.6 ±1 %. | 3.61 |
| 900 | 149.0 ±1 %. | | 83.3 ±1 %. | | 3.6 ±1 %. | |
| 1450 | 89.1 ±1 %. | | 51.7 ±1 %. | | 3.6 ±1 %. | |
| 1500 | 86.2 ±1 %. | | 50.0 ±1 %. | | 3.6 ±1 %. | |
| 1640 | 79.0 ±1 %. | | 45.7 ±1 %. | | 3.6 ±1 %. | |
| 1750 | 75.2 ±1 %. | | 42.9 ±1 %. | | 3.6 ±1 %. | |
| 1800 | 72.0 ±1 %. | | 41.7 ±1 %. | | 3.6 ±1 %. | |
| 1900 | 68.0 ±1 %. | | 39.5 ±1 %. | | 3.6 ±1 %. | |
| 1950 | 66.3 ±1 %. | | 38.5 ±1 %. | | 3.6 ±1 %. | |
| 2000 | 64.5 ±1 %. | | 37.5 ±1 %. | | 3.6 ±1 %. | |
| 2100 | 61.0 ±1 %. | | 35.7 ±1 %. | | 3.6 ±1 %. | |
| 2300 | 55.5 ±1 %. | | 32.6 ±1 %. | | 3.6 ±1 %. | |
| 2450 | 51.5 ±1 %. | | 30.4 ±1 %. | | 3.6 ±1 %. | |
| 2600 | 48.5 ±1 %. | | 28.8 ±1 %. | | 3.6 ±1 %. | |
| 3000 | 41.5 ±1 %. | | 25.0 ±1 %. | | 3.6 ±1 %. | |
| 3300 | - | | - | | - | |
| 3500 | 37.0 ±1 %. | | 26.4 ±1 %. | | 3.6 ±1 %. | |
| 3700 | 34.7 ±1 %. | | 26.4 ±1 %. | | 3.6 ±1 %. | |
| 3900 | - | | - | | - | |
| 4200 | - | | - | | - | |
| 4600 | - | | - | | - | |
| 4900 | - | | - | | - | |

7 VALIDATION MEASUREMENT

The IEC/IEEE 62209-1528 and FCC KDB865664 D01 standards state that the system validation measurements must be performed using a reference dipole meeting the fore mentioned return loss and mechanical dimension requirements. The validation measurement must be performed against a liquid filled flat phantom, with the phantom constructed as outlined in the fore mentioned standards. Per the standards, the dipole shall be positioned below the bottom of the phantom, with the dipole length centered and parallel to the longest dimension of the flat phantom, with the top surface of the dipole at the described distance from the bottom surface of the phantom.

Page: 7/13

Templote_ACR.DDD.N.YY.MVGB.ISSUE_SAR Reference Dipole.v1

This document shall not be reproduced, except in full or in part, without the written approval of MVG. The information contained herein is to be used only for the purpose for which it is submitted and is not to be released in whole or part without written approval of MVG.

CO.LTD


7.1 HEAD LIQUID MEASUREMENT

| Frequency MHz | Relative permittivity (ϵ_r') | | Conductivity (σ) S/m | |
|------------------|---|----------|-------------------------------|----------|
| | required | measured | required | measured |
| 300 | 45.3 \pm 10 % | | 0.87 \pm 10 % | |
| 450 | 43.5 \pm 10 % | | 0.87 \pm 10 % | |
| 750 | 41.9 \pm 10 % | | 0.89 \pm 10 % | |
| 835 | 41.5 \pm 10 % | 39.9 | 0.90 \pm 10 % | 0.91 |
| 900 | 41.5 \pm 10 % | | 0.97 \pm 10 % | |
| 1450 | 40.5 \pm 10 % | | 1.20 \pm 10 % | |
| 1500 | 40.4 \pm 10 % | | 1.23 \pm 10 % | |
| 1640 | 40.2 \pm 10 % | | 1.31 \pm 10 % | |
| 1750 | 40.1 \pm 10 % | | 1.37 \pm 10 % | |
| 1800 | 40.0 \pm 10 % | | 1.40 \pm 10 % | |
| 1900 | 40.0 \pm 10 % | | 1.40 \pm 10 % | |
| 1950 | 40.0 \pm 10 % | | 1.40 \pm 10 % | |
| 2000 | 40.0 \pm 10 % | | 1.40 \pm 10 % | |
| 2100 | 39.8 \pm 10 % | | 1.49 \pm 10 % | |
| 2300 | 39.5 \pm 10 % | | 1.67 \pm 10 % | |
| 2450 | 39.2 \pm 10 % | | 1.80 \pm 10 % | |
| 2600 | 39.0 \pm 10 % | | 1.96 \pm 10 % | |
| 3000 | 38.5 \pm 10 % | | 2.40 \pm 10 % | |
| 3300 | 38.2 \pm 10 % | | 2.71 \pm 10 % | |
| 3500 | 37.9 \pm 10 % | | 2.91 \pm 10 % | |
| 3700 | 37.7 \pm 10 % | | 3.12 \pm 10 % | |
| 3900 | 37.5 \pm 10 % | | 3.32 \pm 10 % | |
| 4200 | 37.1 \pm 10 % | | 3.63 \pm 10 % | |
| 4600 | 36.7 \pm 10 % | | 4.04 \pm 10 % | |
| 4900 | 36.3 \pm 10 % | | 4.35 \pm 10 % | |

7.2 SAR MEASUREMENT RESULT WITH HEAD LIQUID

The IEC/IEEE 62209-1528 and FCC KDB865664 D01 standards state that the system validation measurements should produce the SAR values shown below (for phantom thickness of 2 mm), within the uncertainty for the system validation. All SAR values are normalized to 1 W forward power. In bracket, the measured SAR is given with the used input power.

SHENZHEN


SAR REFERENCE DIPOLE CALIBRATION REPORT

Ref ACR 329.9.21.BES.A

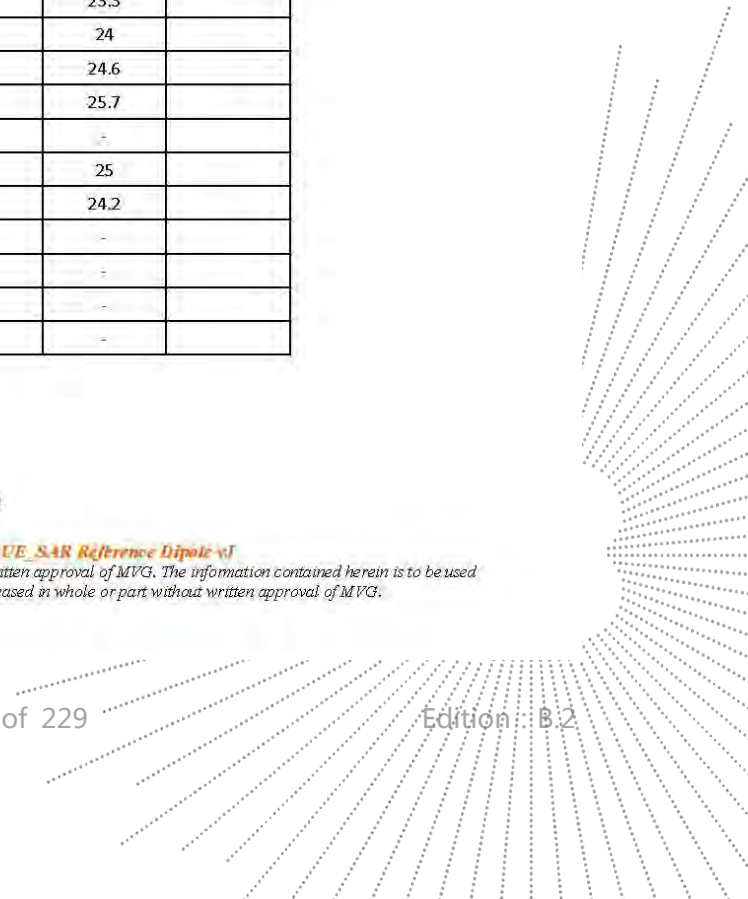
| | |
|---|--|
| Software | OPENSAR V5 |
| Phantom | SN 13/09 SAM68 |
| Probe | SN 41/18 EPGO333 |
| Liquid | Head Liquid Values: eps' : 39.9 sigma : 0.91 |
| Distance between dipole center and liquid | 15.0 mm |
| Area scan resolution | dx=8mm/dy=8mm |
| Zoon Scan Resolution | dx=8mm/dy=8mm/dz=5mm |
| Frequency | 835 MHz |
| Input power | 20 dBm |
| Liquid Temperature | 20 +/- 1 °C |
| Lab Temperature | 20 +/- 1 °C |
| Lab Humidity | 30-70 % |

| Frequency MHz | 1 g SAR (W/kg/W) | | 10 g SAR (W/kg/W) | |
|------------------|------------------|--------------|-------------------|-------------|
| | required | measured | required | measured |
| 300 | 2.85 | | 1.94 | |
| 450 | 4.58 | | 3.06 | |
| 750 | 8.49 | | 5.55 | |
| 835 | 9.56 | 10.01 (1.00) | 6.22 | 6.32 (0.63) |
| 900 | 10.9 | | 6.99 | |
| 1450 | 29 | | 16 | |
| 1500 | 30.5 | | 16.8 | |
| 1640 | 34.2 | | 18.4 | |
| 1750 | 36.4 | | 19.3 | |
| 1800 | 38.4 | | 20.1 | |
| 1900 | 39.7 | | 20.5 | |
| 1950 | 40.5 | | 20.9 | |
| 2000 | 41.1 | | 21.1 | |
| 2100 | 43.6 | | 21.9 | |
| 2300 | 48.7 | | 23.3 | |
| 2450 | 52.4 | | 24 | |
| 2600 | 55.3 | | 24.6 | |
| 3000 | 63.8 | | 25.7 | |
| 3300 | - | | - | |
| 3500 | 67.1 | | 25 | |
| 3700 | 67.4 | | 24.2 | |
| 3900 | - | | - | |
| 4200 | - | | - | |
| 4600 | - | | - | |
| 4900 | - | | - | |

Page: 9/13

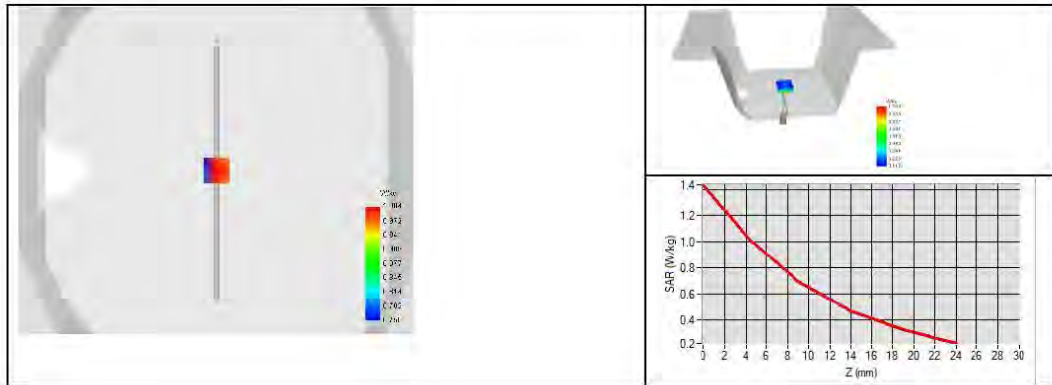
Templon_ACR.DDD.N.YEMVGBISSUE_SAR Reference Dipole v1

This document shall not be reproduced, except in full or in part, without the written approval of MVG. The information contained herein is to be used only for the purpose for which it is submitted and is not to be released in whole or part without written approval of MVG.




SAR REFERENCE DIPOLE CALIBRATION REPORT

Ref: ACR.329.9.21.BES.A





7.3 BODY LIQUID MEASUREMENT

| Frequency MHz | Relative permittivity (ϵ_r') | | Conductivity (σ) S/m | |
|------------------|---|----------|-------------------------------|----------|
| | required | measured | required | measured |
| 150 | 61.9 \pm 10 % | | 0.80 \pm 10 % | |
| 300 | 58.2 \pm 10 % | | 0.92 \pm 10 % | |
| 450 | 56.7 \pm 10 % | | 0.94 \pm 10 % | |
| 750 | 55.5 \pm 10 % | | 0.96 \pm 10 % | |
| 835 | 55.2 \pm 10 % | 52.3 | 0.97 \pm 10 % | 0.94 |
| 900 | 55.0 \pm 10 % | | 1.05 \pm 10 % | |
| 915 | 55.0 \pm 10 % | | 1.06 \pm 10 % | |
| 1450 | 54.0 \pm 10 % | | 1.30 \pm 10 % | |
| 1610 | 53.8 \pm 10 % | | 1.40 \pm 10 % | |
| 1800 | 53.3 \pm 10 % | | 1.52 \pm 10 % | |
| 1900 | 53.3 \pm 10 % | | 1.52 \pm 10 % | |
| 2000 | 53.3 \pm 10 % | | 1.52 \pm 10 % | |
| 2100 | 53.2 \pm 10 % | | 1.62 \pm 10 % | |
| 2300 | 52.9 \pm 10 % | | 1.81 \pm 10 % | |
| 2450 | 52.7 \pm 10 % | | 1.95 \pm 10 % | |
| 2600 | 52.5 \pm 10 % | | 2.16 \pm 10 % | |
| 3000 | 52.0 \pm 10 % | | 2.73 \pm 10 % | |
| 3300 | 51.6 \pm 10 % | | 3.08 \pm 10 % | |
| 3500 | 51.3 \pm 10 % | | 3.31 \pm 10 % | |
| 3700 | 51.0 \pm 10 % | | 3.55 \pm 10 % | |
| 3900 | 50.8 \pm 10 % | | 3.78 \pm 10 % | |
| 4200 | 50.4 \pm 10 % | | 4.13 \pm 10 % | |
| 4600 | 49.8 \pm 10 % | | 4.60 \pm 10 % | |
| 4900 | 49.4 \pm 10 % | | 4.95 \pm 10 % | |
| 5200 | 49.0 \pm 10 % | | 5.30 \pm 10 % | |
| 5300 | 48.9 \pm 10 % | | 5.42 \pm 10 % | |
| 5400 | 48.7 \pm 10 % | | 5.53 \pm 10 % | |
| 5500 | 48.6 \pm 10 % | | 5.65 \pm 10 % | |
| 5600 | 48.5 \pm 10 % | | 5.77 \pm 10 % | |
| 5800 | 48.2 \pm 10 % | | 6.00 \pm 10 % | |

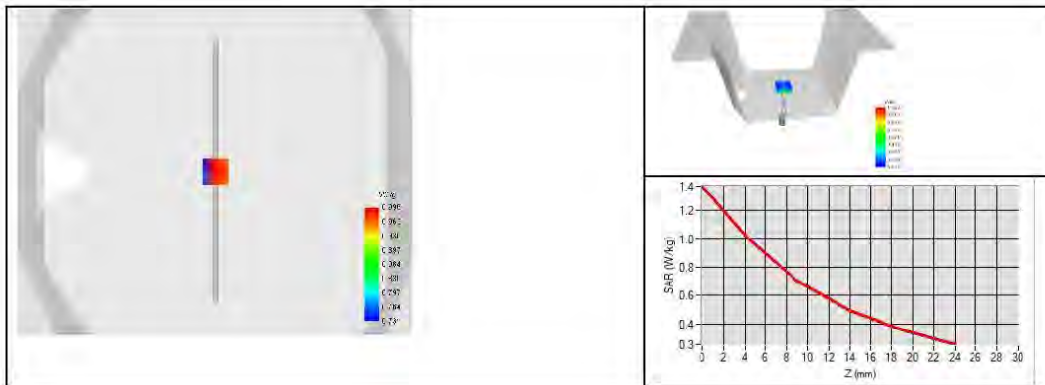

SAR REFERENCE DIPOLE CALIBRATION REPORT

Ref ACR 329.9.21.BES.A

7.4 SAR MEASUREMENT RESULT WITH BODY LIQUID

| | |
|---|---|
| Software | OPENSAR V5 |
| Phantom | SN 13/09 SAM68 |
| Probe | SN 41/18 EPGO333 |
| Liquid | Body Liquid Values: ϵ_p : 52.3 σ : 0.94 |
| Distance between dipole center and liquid | 15.0 mm |
| Area scan resolution | $dx=8mm/dy=8mm$ |
| Zoon Scan Resolution | $dx=8mm/dy=8mm/dz=5mm$ |
| Frequency | 835 MHz |
| Input power | 20 dBm |
| Liquid Temperature | 20 +/- 1 °C |
| Lab Temperature | 20 +/- 1 °C |
| Lab Humidity | 30-70 % |

| Frequency MHz | 1 g SAR (W/kg/W) | 10 g SAR (W/kg/W) |
|---------------|------------------|-------------------|
| | measured | measured |
| 835 | 9.70 (0.97) | 6.32 (0.63) |




8 LIST OF EQUIPMENT

| Equipment Summary Sheet | | | | |
|------------------------------------|-------------------------|--------------------|---|---|
| Equipment Description | Manufacturer / Model | Identification No. | Current Calibration Date | Next Calibration Date |
| SAM Phantom | MVG | SN 13/09 SAM68 | Validated. No cal required. | Validated. No cal required. |
| COMOSAR Test Bench | Version 3 | NA | Validated. No cal required. | Validated. No cal required. |
| Network Analyzer | Rohde & Schwarz ZVM | 100203 | 08/2021 | 08/2024 |
| Network Analyzer | Agilent 8753ES | MY40003210 | 10/2019 | 10/2022 |
| Network Analyzer – Calibration kit | Rohde & Schwarz ZV-Z235 | 101223 | 05/2019 | 05/2022 |
| Network Analyzer – Calibration kit | HP 85033D | 3423A08186 | 06/2021 | 06/2027 |
| Calipers | Mitutoyo | SN 0009732 | 10/2019 | 10/2022 |
| Reference Probe | MVG | SN 41/18 EPGO333 | 10/2021 | 10/2022 |
| Multimeter | Keithley 2000 | 1160271 | 02/2020 | 02/2023 |
| Signal Generator | Rohde & Schwarz SMB | 106589 | 04/2019 | 04/2022 |
| Amplifier | MVG | MODU-023-C-0002 | Characterized prior to test. No cal required. | Characterized prior to test. No cal required. |
| Power Meter | NI-USB 5680 | 170100013 | 06/2021 | 06/2024 |
| Power Meter | Rohde & Schwarz NRVD | 832839-056 | 11/2019 | 11/2022 |
| Directional Coupler | Krytar 158020 | 131467 | Characterized prior to test. No cal required. | Characterized prior to test. No cal required. |
| Temperature / Humidity Sensor | Testo 184 H1 | 44225320 | 06/2021 | 06/2024 |

Page: 13/13

Templon_ACR.DDD.N.YEMVGBISSUE_SAR Reference Dipole v1

This document shall not be reproduced, except in full or in part, without the written approval of MVG. The information contained herein is to be used only for the purpose for which it is submitted and is not to be released in whole or part without written approval of MVG.

CO.LTD



SAR Reference Dipole Calibration Report

Ref : ACR.329.11.21.BES.A

SHENZHEN BCTC TECHNOLOGY CO., LTD.

**1 ~2/ F, NO. B FACTORY BUILDING, PENGZHOU
INDUSTRIAL PARK, FUYUAN 1ST ROAD,
TANGWEI COMMUNITY, FUHAI STREET, BAO'AN
DISTRICT, SHENZHEN, GUANGDONG, CHINA**

MVG COMOSAR REFERENCE DIPOLE**FREQUENCY: 1800 MHZ****SERIAL NO.: SN 47/21 DIP 1G800-623****Calibrated at MVG****Z.I. de la pointe du diable****Technopôle Brest Iroise – 295 avenue Alexis de Rochon****29280 PLOUZANE - FRANCE****Calibration date: 11/25/2021**

Accreditations #2-6789 and #2-6814
Scope available on www.cofrac.fr

The use of the Cofrac brand and the accreditation references is prohibited from any reproduction.

Summary:

This document presents the method and results from an accredited SAR reference dipole calibration performed in MVG using the COMOSAR test bench. All calibration results are traceable to national metrology institutions.

Page: 1/13


SAR REFERENCE DIPOLE CALIBRATION REPORT

Ref: ACR.329.11.21.BES.A

| | <i>Name</i> | <i>Function</i> | <i>Date</i> | <i>Signature</i> |
|----------------------|--------------|---------------------|-------------|---------------------|
| <i>Prepared by :</i> | Jérôme Luc | Technical Manager | 11/25/2021 | <i>JS</i> |
| <i>Checked by :</i> | Jérôme Luc | Technical Manager | 11/25/2021 | <i>JS</i> |
| <i>Approved by :</i> | Yann Toutain | Laboratory Director | 11/25/2021 | <i>Yann TOUTAIN</i> |

2021.11.25

11:53:42 +01'00'

| | <i>Customer Name</i> |
|-----------------------|--|
| <i>Distribution :</i> | Shenzhen BCTC Technology Co., Ltd. |

| <i>Issue</i> | <i>Name</i> | <i>Date</i> | <i>Modifications</i> |
|--------------|-------------|-------------|----------------------|
| A | Jérôme Luc | 11/25/2021 | Initial release |
| | | | |
| | | | |

Page: 2/13

Template_ACR.DDD.N.YEMVGBISSUE_SAR Référence Dipole v1

This document shall not be reproduced, except in full or in part, without the written approval of MVG. The information contained herein is to be used only for the purpose for which it is submitted and is not to be released in whole or part without written approval of MVG.

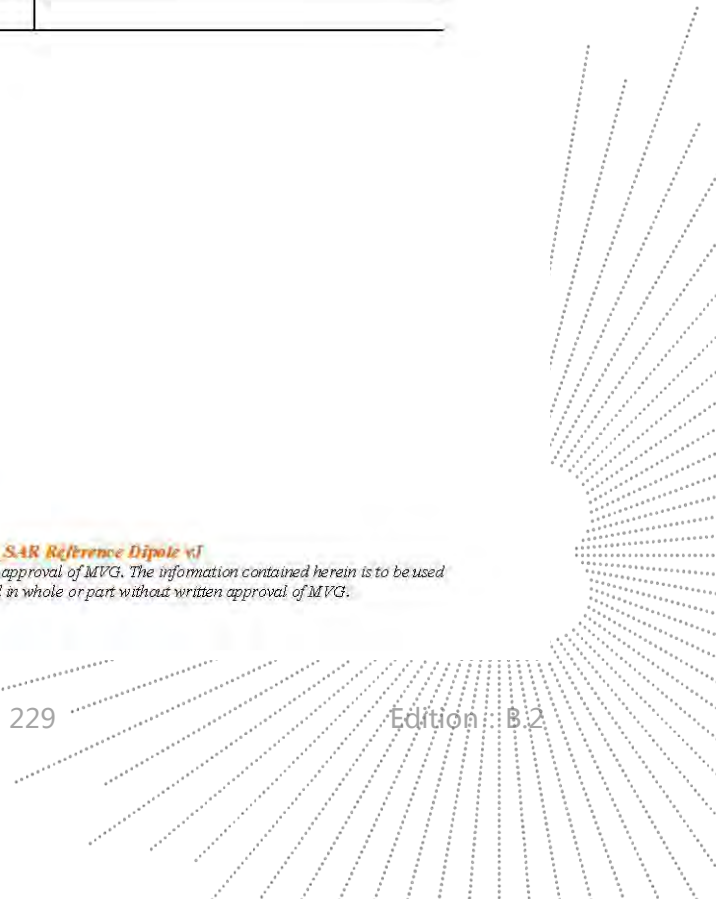



TABLE OF CONTENTS

| | | |
|-----|--|----|
| 1 | Introduction..... | 4 |
| 2 | Device Under Test | 4 |
| 3 | Product Description | 4 |
| 3.1 | General Information | 4 |
| 4 | Measurement Method | 5 |
| 4.1 | Return Loss Requirements | 5 |
| 4.2 | Mechanical Requirements | 5 |
| 5 | Measurement Uncertainty..... | 5 |
| 5.1 | Return Loss | 5 |
| 5.2 | Dimension Measurement | 5 |
| 5.3 | Validation Measurement | 5 |
| 6 | Calibration Measurement Results..... | 6 |
| 6.1 | Return Loss and Impedance In Head Liquid | 6 |
| 6.2 | Return Loss and Impedance In Body Liquid | 6 |
| 6.3 | Mechanical Dimensions | 7 |
| 7 | Validation measurement | 7 |
| 7.1 | Head Liquid Measurement | 8 |
| 7.2 | SAR Measurement Result With Head Liquid | 8 |
| 7.3 | Body Liquid Measurement | 11 |
| 7.4 | SAR Measurement Result With Body Liquid | 12 |
| 8 | List of Equipment | 13 |





1 INTRODUCTION

This document contains a summary of the requirements set forth by the IEC/IEEE 62209-1528 and FCC KDB865664 D01 standards for reference dipoles used for SAR measurement system validations and the measurements that were performed to verify that the product complies with the fore mentioned standards.

2 DEVICE UNDER TEST

| Device Under Test | |
|--------------------------------|-----------------------------------|
| Device Type | COMOSAR 1800 MHz REFERENCE DIPOLE |
| Manufacturer | MVG |
| Model | SID1800 |
| Serial Number | SN 47/21 DIP 1G800-623 |
| Product Condition (new / used) | New |

3 PRODUCT DESCRIPTION

3.1 GENERAL INFORMATION

MVG's COMOSAR Validation Dipoles are built in accordance to the IEC/IEEE 62209-1528 and FCC KDB865664 D01 standards. The product is designed for use with the COMOSAR test bench only.



Figure 1 – MVG COMOSAR Validation Dipole

Page: 4/13

Template_ACR.DDD.N.YEMVGB.ISSUE_SAR Reference Dipole v1

This document shall not be reproduced, except in full or in part, without the written approval of MVG. The information contained herein is to be used only for the purpose for which it is submitted and is not to be released in whole or part without written approval of MVG.



4 MEASUREMENT METHOD

The IEC/IEEE 62209-1528 and FCC KDB865664 D01 standards provide requirements for reference dipoles used for system validation measurements. The following measurements were performed to verify that the product complies with the fore mentioned standards.

4.1 RETURN LOSS REQUIREMENTS

The dipole used for SAR system validation measurements and checks must have a return loss of -20 dB or better. The return loss measurement shall be performed against a liquid filled flat phantom, with the phantom constructed as outlined in the fore mentioned standards. A direct method is used with a network analyser and its calibration kit, both with a valid ISO17025 calibration.

4.2 MECHANICAL REQUIREMENTS

The IEC/IEEE 62209-1528 and FCC KDB865664 D01 standards specify the mechanical components and dimensions of the validation dipoles, with the dimension's frequency and phantom shell thickness dependent. The COMOSAR test bench employs a 2 mm phantom shell thickness therefore the dipoles sold for use with the COMOSAR test bench comply with the requirements set forth for a 2 mm phantom shell thickness. A direct method is used with a ISO17025 calibrated caliper.

5 MEASUREMENT UNCERTAINTY

All uncertainties listed below represent an expanded uncertainty expressed at approximately the 95% confidence level using a coverage factor of $k=2$, traceable to the Internationally Accepted Guides to Measurement Uncertainty.

5.1 RETURN LOSS

The following uncertainties apply to the return loss measurement:

| Frequency band | Expanded Uncertainty on Return Loss |
|----------------|-------------------------------------|
| 400-6000MHz | 0.08 LIN |

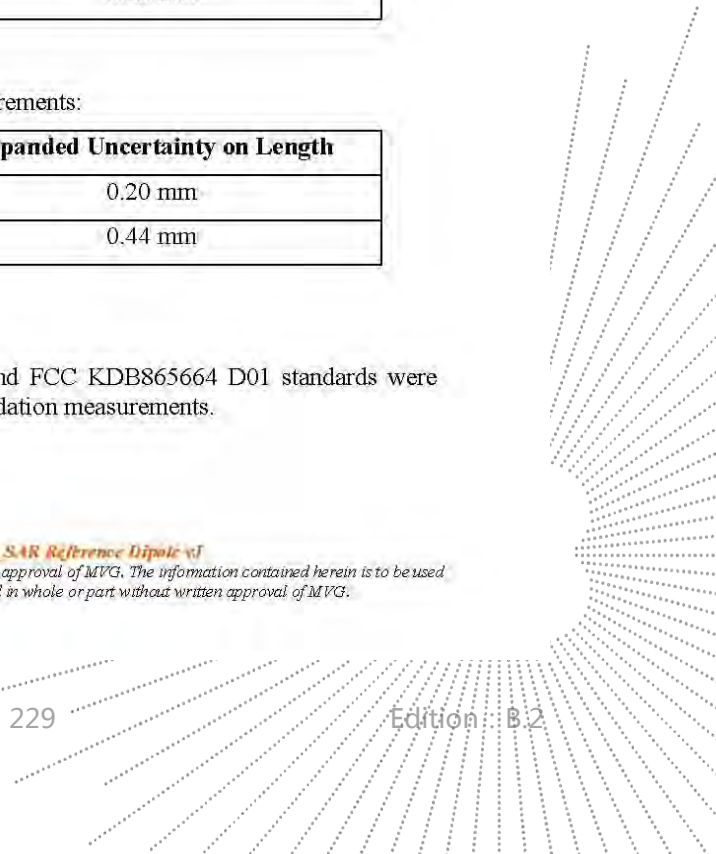
5.2 DIMENSION MEASUREMENT

The following uncertainties apply to the dimension measurements:

| Length (mm) | Expanded Uncertainty on Length |
|-------------|--------------------------------|
| 0 - 300 | 0.20 mm |
| 300 - 450 | 0.44 mm |

5.3 VALIDATION MEASUREMENT

The guidelines outlined in the IEC/IEEE 62209-1528 and FCC KDB865664 D01 standards were followed to generate the measurement uncertainty for validation measurements.

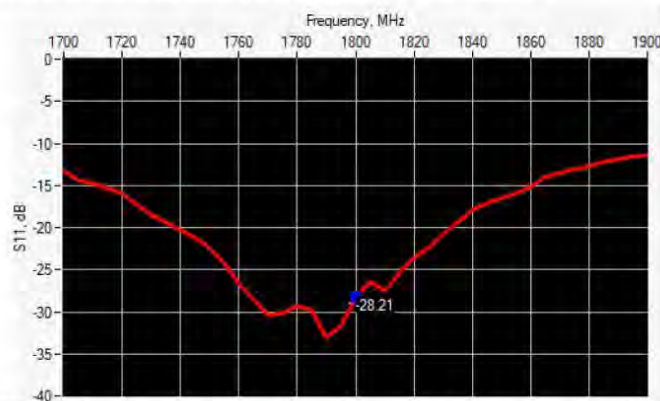




| Scan Volume | Expanded Uncertainty |
|-------------|----------------------|
| 1 g | 19 % (SAR) |
| 10 g | 19 % (SAR) |

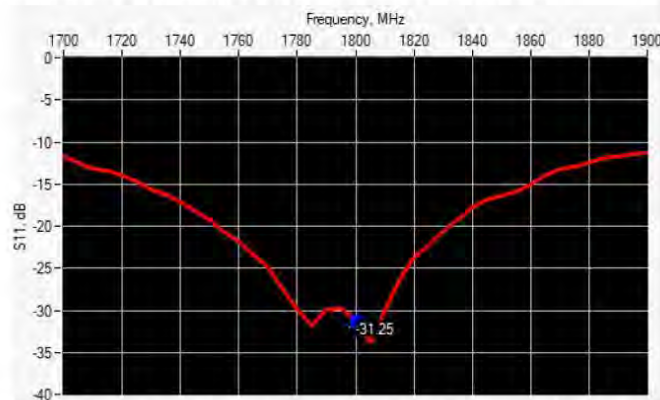
6 CALIBRATION MEASUREMENT RESULTS

6.1 RETURN LOSS AND IMPEDANCE IN HEAD LIQUID



| Frequency (MHz) | Return Loss (dB) | Requirement (dB) | Impedance |
|-----------------|------------------|------------------|-----------------------------|
| 1800 | -28.21 | -20 | $49.8 \Omega + 3.9 j\Omega$ |

6.2 RETURN LOSS AND IMPEDANCE IN BODY LIQUID



| Frequency (MHz) | Return Loss (dB) | Requirement (dB) | Impedance |
|-----------------|------------------|------------------|-----------------------------|
| 1800 | -31.25 | -20 | $47.7 \Omega - 1.4 j\Omega$ |

CO.LTD



6.3 MECHANICAL DIMENSIONS

| Frequency MHz | L mm | | h mm | | d mm | |
|---------------|------------|----------|------------|----------|-----------|----------|
| | required | measured | required | measured | required | measured |
| 300 | 420.0 ±1 % | | 250.0 ±1 % | | 6.35 ±1 % | |
| 450 | 290.0 ±1 % | | 166.7 ±1 % | | 6.35 ±1 % | |
| 750 | 176.0 ±1 % | | 100.0 ±1 % | | 6.35 ±1 % | |
| 835 | 161.0 ±1 % | | 89.8 ±1 % | | 3.6 ±1 % | |
| 900 | 149.0 ±1 % | | 83.3 ±1 % | | 3.6 ±1 % | |
| 1450 | 89.1 ±1 % | | 51.7 ±1 % | | 3.6 ±1 % | |
| 1500 | 86.2 ±1 % | | 50.0 ±1 % | | 3.6 ±1 % | |
| 1640 | 79.0 ±1 % | | 45.7 ±1 % | | 3.6 ±1 % | |
| 1750 | 75.2 ±1 % | | 42.9 ±1 % | | 3.6 ±1 % | |
| 1800 | 72.0 ±1 % | 72.31 | 41.7 ±1 % | 41.63 | 3.6 ±1 % | 3.59 |
| 1900 | 68.0 ±1 % | | 39.5 ±1 % | | 3.6 ±1 % | |
| 1950 | 66.3 ±1 % | | 38.5 ±1 % | | 3.6 ±1 % | |
| 2000 | 64.5 ±1 % | | 37.5 ±1 % | | 3.6 ±1 % | |
| 2100 | 61.0 ±1 % | | 35.7 ±1 % | | 3.6 ±1 % | |
| 2300 | 55.5 ±1 % | | 32.6 ±1 % | | 3.6 ±1 % | |
| 2450 | 51.5 ±1 % | | 30.4 ±1 % | | 3.6 ±1 % | |
| 2600 | 48.5 ±1 % | | 28.8 ±1 % | | 3.6 ±1 % | |
| 3000 | 41.5 ±1 % | | 25.0 ±1 % | | 3.6 ±1 % | |
| 3300 | - | | - | | - | |
| 3500 | 37.0 ±1 % | | 26.4 ±1 % | | 3.6 ±1 % | |
| 3700 | 34.7 ±1 % | | 26.4 ±1 % | | 3.6 ±1 % | |
| 3900 | - | | - | | - | |
| 4200 | - | | - | | - | |
| 4600 | - | | - | | - | |
| 4900 | - | | - | | - | |

7 VALIDATION MEASUREMENT

The IEC/IEEE 62209-1528 and FCC KDB865664 D01 standards state that the system validation measurements must be performed using a reference dipole meeting the fore mentioned return loss and mechanical dimension requirements. The validation measurement must be performed against a liquid filled flat phantom, with the phantom constructed as outlined in the fore mentioned standards. Per the standards, the dipole shall be positioned below the bottom of the phantom, with the dipole length centered and parallel to the longest dimension of the flat phantom, with the top surface of the dipole at the described distance from the bottom surface of the phantom.

SHENZHEN



7.1 HEAD LIQUID MEASUREMENT

| Frequency MHz | Relative permittivity (ϵ_r) | | Conductivity (σ) S/m | |
|------------------|--|----------|-------------------------------|----------|
| | required | measured | required | measured |
| 300 | 45.3 \pm 10 % | | 0.87 \pm 10 % | |
| 450 | 43.5 \pm 10 % | | 0.87 \pm 10 % | |
| 750 | 41.9 \pm 10 % | | 0.89 \pm 10 % | |
| 835 | 41.5 \pm 10 % | | 0.90 \pm 10 % | |
| 900 | 41.5 \pm 10 % | | 0.97 \pm 10 % | |
| 1450 | 40.5 \pm 10 % | | 1.20 \pm 10 % | |
| 1500 | 40.4 \pm 10 % | | 1.23 \pm 10 % | |
| 1640 | 40.2 \pm 10 % | | 1.31 \pm 10 % | |
| 1750 | 40.1 \pm 10 % | | 1.37 \pm 10 % | |
| 1800 | 40.0 \pm 10 % | 38.4 | 1.40 \pm 10 % | 1.36 |
| 1900 | 40.0 \pm 10 % | | 1.40 \pm 10 % | |
| 1950 | 40.0 \pm 10 % | | 1.40 \pm 10 % | |
| 2000 | 40.0 \pm 10 % | | 1.40 \pm 10 % | |
| 2100 | 39.8 \pm 10 % | | 1.49 \pm 10 % | |
| 2300 | 39.5 \pm 10 % | | 1.67 \pm 10 % | |
| 2450 | 39.2 \pm 10 % | | 1.80 \pm 10 % | |
| 2600 | 39.0 \pm 10 % | | 1.96 \pm 10 % | |
| 3000 | 38.5 \pm 10 % | | 2.40 \pm 10 % | |
| 3300 | 38.2 \pm 10 % | | 2.71 \pm 10 % | |
| 3500 | 37.9 \pm 10 % | | 2.91 \pm 10 % | |
| 3700 | 37.7 \pm 10 % | | 3.12 \pm 10 % | |
| 3900 | 37.5 \pm 10 % | | 3.32 \pm 10 % | |
| 4200 | 37.1 \pm 10 % | | 3.63 \pm 10 % | |
| 4600 | 36.7 \pm 10 % | | 4.04 \pm 10 % | |
| 4900 | 36.3 \pm 10 % | | 4.35 \pm 10 % | |

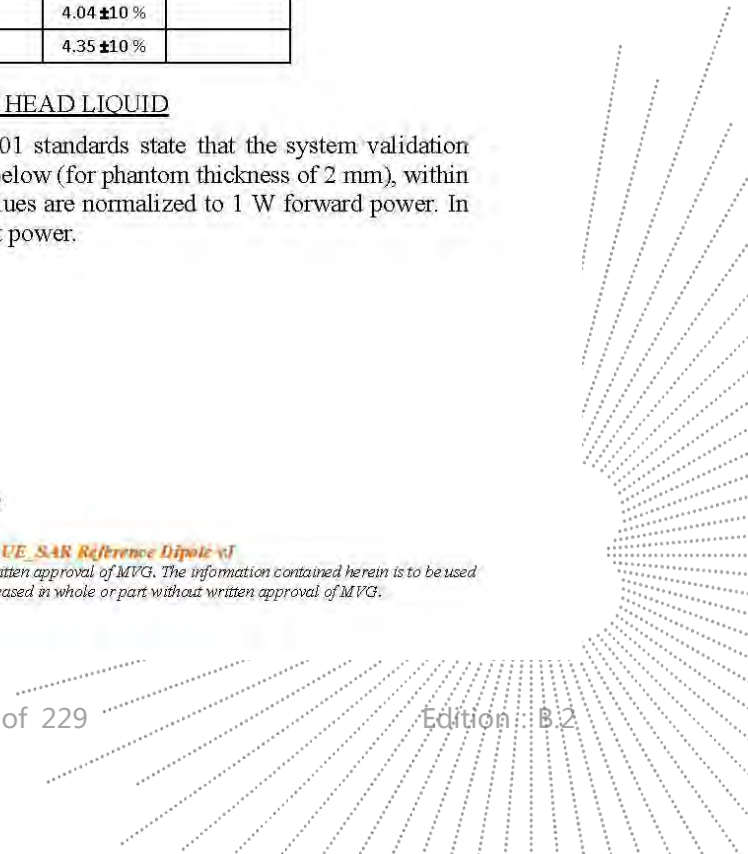
7.2 SAR MEASUREMENT RESULT WITH HEAD LIQUID

The IEC/IEEE 62209-1528 and FCC KDB865664 D01 standards state that the system validation measurements should produce the SAR values shown below (for phantom thickness of 2 mm), within the uncertainty for the system validation. All SAR values are normalized to 1 W forward power. In bracket, the measured SAR is given with the used input power.

Page: 8/13

Templon_ACR.DDD.N.YE.MVGBISSUE_SAR Reference Dipole v1

This document shall not be reproduced, except in full or in part, without the written approval of MVG. The information contained herein is to be used only for the purpose for which it is submitted and is not to be released in whole or part without written approval of MVG.




SAR REFERENCE DIPOLE CALIBRATION REPORT

Ref: ACR.329.11.21.BES.A

| | |
|---|--|
| Software | OPENSAR V5 |
| Phantom | SN 13/09 SAM68 |
| Probe | SN 41/18 EPGO333 |
| Liquid | Head Liquid Values: eps' : 38.4 sigma : 1.36 |
| Distance between dipole center and liquid | 10.0 mm |
| Area scan resolution | dx=8mm/dy=8mm |
| Zoon Scan Resolution | dx=8mm/dy=8mm/dz=5mm |
| Frequency | 1800 MHz |
| Input power | 20 dBm |
| Liquid Temperature | 20 +/- 1 °C |
| Lab Temperature | 20 +/- 1 °C |
| Lab Humidity | 30-70 % |

| Frequency MHz | 1 g SAR (W/kg/W) | | 10 g SAR (W/kg/W) | |
|------------------|------------------|--------------|-------------------|--------------|
| | required | measured | required | measured |
| 300 | 2.85 | | 1.94 | |
| 450 | 4.58 | | 3.06 | |
| 750 | 8.49 | | 5.55 | |
| 835 | 9.56 | | 6.22 | |
| 900 | 10.9 | | 6.99 | |
| 1450 | 29 | | 16 | |
| 1500 | 30.5 | | 16.8 | |
| 1640 | 34.2 | | 18.4 | |
| 1750 | 36.4 | | 19.3 | |
| 1800 | 38.4 | 39.74 (3.97) | 20.1 | 20.82 (2.08) |
| 1900 | 39.7 | | 20.5 | |
| 1950 | 40.5 | | 20.9 | |
| 2000 | 41.1 | | 21.1 | |
| 2100 | 43.6 | | 21.9 | |
| 2300 | 48.7 | | 23.3 | |
| 2450 | 52.4 | | 24 | |
| 2600 | 55.3 | | 24.6 | |
| 3000 | 63.8 | | 25.7 | |
| 3300 | - | | - | |
| 3500 | 67.1 | | 25 | |
| 3700 | 67.4 | | 24.2 | |
| 3900 | - | | - | |
| 4200 | - | | - | |
| 4600 | - | | - | |
| 4900 | - | | - | |

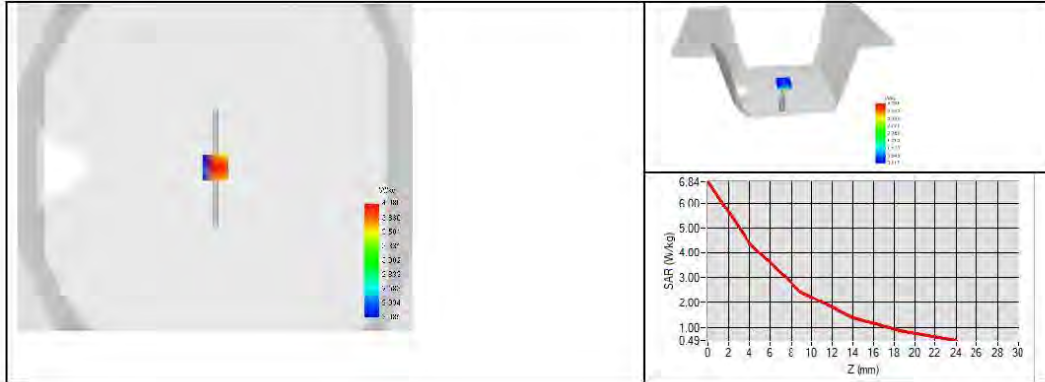
Page: 9/13

Template_ACR.DDD.N.YEMVGBISSUE_SAR Reference Dipole v1

This document shall not be reproduced, except in full or in part, without the written approval of MVG. The information contained herein is to be used only for the purpose for which it is submitted and is not to be released in whole or part without written approval of MVG.


SAR REFERENCE DIPOLE CALIBRATION REPORT

Ref: ACR.329.11.21.BES.A



TEC
TO
OVB
t See





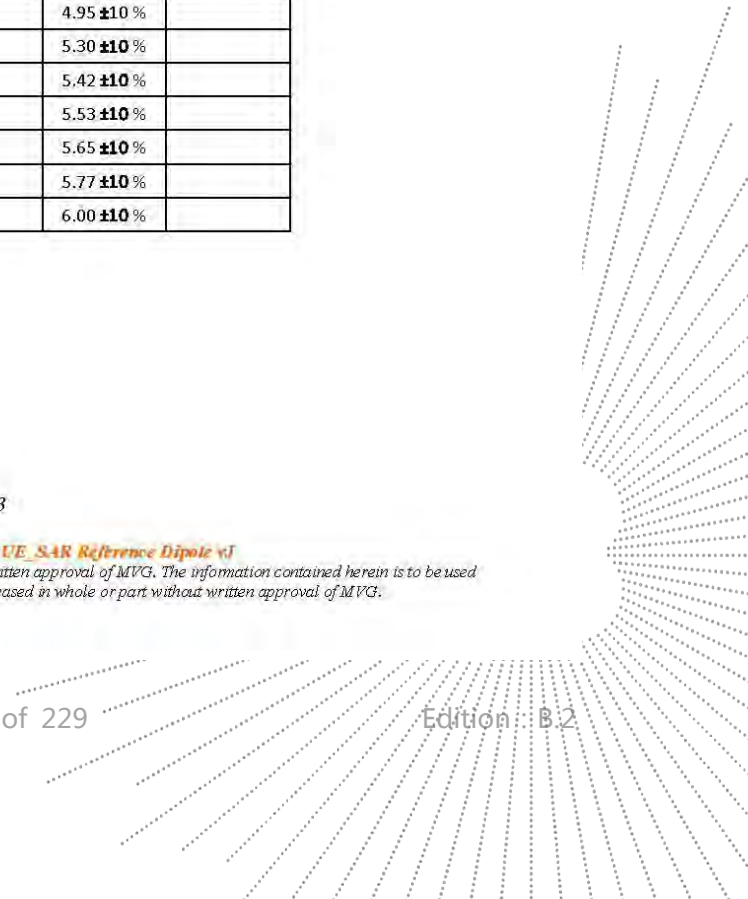
7.3 BODY LIQUID MEASUREMENT

| Frequency MHz | Relative permittivity (ϵ_r') | | Conductivity (σ) S/m | |
|------------------|---|----------|-------------------------------|----------|
| | required | measured | required | measured |
| 150 | 61.9 \pm 10 % | | 0.80 \pm 10 % | |
| 300 | 58.2 \pm 10 % | | 0.92 \pm 10 % | |
| 450 | 56.7 \pm 10 % | | 0.94 \pm 10 % | |
| 750 | 55.5 \pm 10 % | | 0.96 \pm 10 % | |
| 835 | 55.2 \pm 10 % | | 0.97 \pm 10 % | |
| 900 | 55.0 \pm 10 % | | 1.05 \pm 10 % | |
| 915 | 55.0 \pm 10 % | | 1.06 \pm 10 % | |
| 1450 | 54.0 \pm 10 % | | 1.30 \pm 10 % | |
| 1610 | 53.8 \pm 10 % | | 1.40 \pm 10 % | |
| 1800 | 53.3 \pm 10 % | 55.3 | 1.52 \pm 10 % | 1.49 |
| 1900 | 53.3 \pm 10 % | | 1.52 \pm 10 % | |
| 2000 | 53.3 \pm 10 % | | 1.52 \pm 10 % | |
| 2100 | 53.2 \pm 10 % | | 1.62 \pm 10 % | |
| 2300 | 52.9 \pm 10 % | | 1.81 \pm 10 % | |
| 2450 | 52.7 \pm 10 % | | 1.95 \pm 10 % | |
| 2600 | 52.5 \pm 10 % | | 2.16 \pm 10 % | |
| 3000 | 52.0 \pm 10 % | | 2.73 \pm 10 % | |
| 3300 | 51.6 \pm 10 % | | 3.08 \pm 10 % | |
| 3500 | 51.3 \pm 10 % | | 3.31 \pm 10 % | |
| 3700 | 51.0 \pm 10 % | | 3.55 \pm 10 % | |
| 3900 | 50.8 \pm 10 % | | 3.78 \pm 10 % | |
| 4200 | 50.4 \pm 10 % | | 4.13 \pm 10 % | |
| 4600 | 49.8 \pm 10 % | | 4.60 \pm 10 % | |
| 4900 | 49.4 \pm 10 % | | 4.95 \pm 10 % | |
| 5200 | 49.0 \pm 10 % | | 5.30 \pm 10 % | |
| 5300 | 48.9 \pm 10 % | | 5.42 \pm 10 % | |
| 5400 | 48.7 \pm 10 % | | 5.53 \pm 10 % | |
| 5500 | 48.6 \pm 10 % | | 5.65 \pm 10 % | |
| 5600 | 48.5 \pm 10 % | | 5.77 \pm 10 % | |
| 5800 | 48.2 \pm 10 % | | 6.00 \pm 10 % | |

Page: 11/13

Template_ACR.DDD.N.YE.MVGBISSUE_SAR Reference Dipole v1

This document shall not be reproduced, except in full or in part, without the written approval of MVG. The information contained herein is to be used only for the purpose for which it is submitted and is not to be released in whole or part without written approval of MVG.



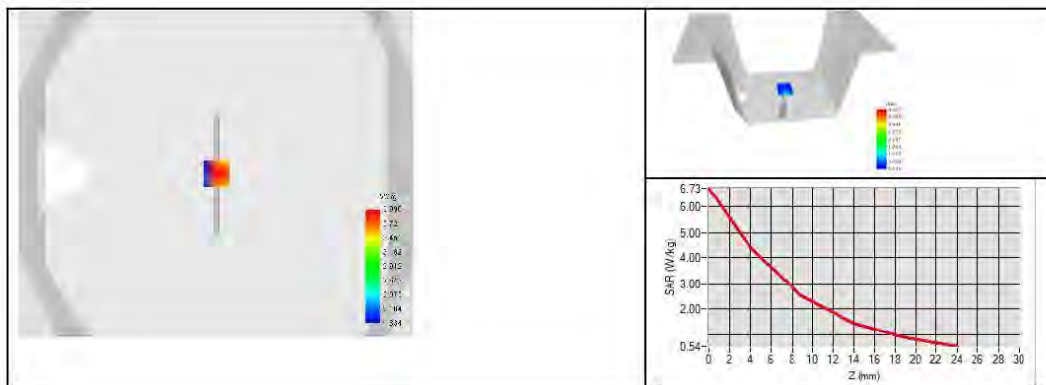

SAR REFERENCE DIPOLE CALIBRATION REPORT

Ref: ACR.329.11.21.BES.A

7.4 SAR MEASUREMENT RESULT WITH BODY LIQUID

| | |
|---|--|
| Software | OPENSAR V5 |
| Phantom | SN 13/09 SAM68 |
| Probe | SN 41/18 EPGO333 |
| Liquid | Body Liquid Values: eps' : 55.3 sigma : 1.49 |
| Distance between dipole center and liquid | 10.0 mm |
| Area scan resolution | dx=8mm/dy=8mm |
| Zoon Scan Resolution | dx=8mm/dy=8mm/dz=5mm |
| Frequency | 1800 MHz |
| Input power | 20 dBm |
| Liquid Temperature | 20 +/- 1 °C |
| Lab Temperature | 20 +/- 1 °C |
| Lab Humidity | 30-70 % |

| Frequency MHz | 1 g SAR (W/kg/W) | 10 g SAR (W/kg/W) |
|---------------|------------------|-------------------|
| | measured | measured |
| 1800 | 39.54 (3.95) | 20.63 (2.06) |



CO., LTD


8 LIST OF EQUIPMENT

| Equipment Summary Sheet | | | | |
|------------------------------------|-------------------------|--------------------|---|---|
| Equipment Description | Manufacturer / Model | Identification No. | Current Calibration Date | Next Calibration Date |
| SAM Phantom | MVG | SN 13/09 SAM68 | Validated. No cal required. | Validated. No cal required. |
| COMOSAR Test Bench | Version 3 | NA | Validated. No cal required. | Validated. No cal required. |
| Network Analyzer | Rohde & Schwarz ZVM | 100203 | 08/2021 | 08/2024 |
| Network Analyzer | Agilent 8753ES | MY40003210 | 10/2019 | 10/2022 |
| Network Analyzer – Calibration kit | Rohde & Schwarz ZV-Z235 | 101223 | 05/2019 | 05/2022 |
| Network Analyzer – Calibration kit | HP 85033D | 3423A08186 | 06/2021 | 06/2027 |
| Calipers | Mitutoyo | SN 0009732 | 10/2019 | 10/2022 |
| Reference Probe | MVG | SN 41/18 EPGO333 | 10/2021 | 10/2022 |
| Multimeter | Keithley 2000 | 1160271 | 02/2020 | 02/2023 |
| Signal Generator | Rohde & Schwarz SMB | 106589 | 04/2019 | 04/2022 |
| Amplifier | MVG | MODU-023-C-0002 | Characterized prior to test. No cal required. | Characterized prior to test. No cal required. |
| Power Meter | NI-USB 5680 | 170100013 | 06/2021 | 06/2024 |
| Power Meter | Rohde & Schwarz NRVD | 832839-056 | 11/2019 | 11/2022 |
| Directional Coupler | Krytar 158020 | 131467 | Characterized prior to test. No cal required. | Characterized prior to test. No cal required. |
| Temperature / Humidity Sensor | Testo 184 H1 | 44225320 | 06/2021 | 06/2024 |

Page: 13/13

Template_ACR.DDD.N.YE.MVG.B.ISSUE_SAR Reference Dipole v1

This document shall not be reproduced, except in full or in part, without the written approval of MVG. The information contained herein is to be used only for the purpose for which it is submitted and is not to be released in whole or part without written approval of MVG.





SAR Reference Dipole Calibration Report

Ref : ACR.329.12.21.BES.A

SHENZHEN BCTC TECHNOLOGY CO., LTD.

1 ~2/ F, NO. B FACTORY BUILDING, PENGZHOU
INDUSTRIAL PARK, FUYUAN 1ST ROAD,
TANGWEI COMMUNITY, FUHAI STREET, BAO'AN
DISTRICT, SHENZHEN, GUANGDONG, CHINA

MVG COMOSAR REFERENCE DIPOLE

FREQUENCY: 1900 MHZ

SERIAL NO.: SN 47/21 DIP 1G900-624

Calibrated at MVG

Z.I. de la pointe du diable

Technopôle Brest Iroise – 295 avenue Alexis de Rochon

29280 PLOUZANE - FRANCE

Calibration date: 11/25/2021



Accreditations #2-6789 and #2-6814
Scope available on www.cofrac.fr

The use of the Cofrac brand and the accreditation references is prohibited from any reproduction.

Summary:

This document presents the method and results from an accredited SAR reference dipole calibration performed in MVG using the COMOSAR test bench. All calibration results are traceable to national metrology institutions.

Page: 1/13


SAR REFERENCE DIPOLE CALIBRATION REPORT

Ref: ACR.329.12.21.BES.A

| | <i>Name</i> | <i>Function</i> | <i>Date</i> | <i>Signature</i> |
|----------------------|--------------|---------------------|-------------|---------------------|
| <i>Prepared by :</i> | Jérôme Luc | Technical Manager | 11/25/2021 | <i>JS</i> |
| <i>Checked by :</i> | Jérôme Luc | Technical Manager | 11/25/2021 | <i>JS</i> |
| <i>Approved by :</i> | Yann Toutain | Laboratory Director | 11/25/2021 | <i>Yann TOUTAIN</i> |

2021.11.25

11:54:31 +01'00'

| | <i>Customer Name</i> |
|-----------------------|--|
| <i>Distribution :</i> | Shenzhen BCTC Technology Co., Ltd. |

| <i>Issue</i> | <i>Name</i> | <i>Date</i> | <i>Modifications</i> |
|--------------|-------------|-------------|----------------------|
| A | Jérôme Luc | 11/25/2021 | Initial release |
| | | | |
| | | | |

Page: 2/13

Template_ACR.DDD.N.YEMVGBISSUE_SAR Référence Dipole v1

This document shall not be reproduced, except in full or in part, without the written approval of MVG. The information contained herein is to be used only for the purpose for which it is submitted and is not to be released in whole or part without written approval of MVG.


TABLE OF CONTENTS

| | | |
|-----|--|----|
| 1 | Introduction..... | 4 |
| 2 | Device Under Test | 4 |
| 3 | Product Description | 4 |
| 3.1 | General Information | 4 |
| 4 | Measurement Method | 5 |
| 4.1 | Return Loss Requirements | 5 |
| 4.2 | Mechanical Requirements | 5 |
| 5 | Measurement Uncertainty..... | 5 |
| 5.1 | Return Loss | 5 |
| 5.2 | Dimension Measurement | 5 |
| 5.3 | Validation Measurement | 5 |
| 6 | Calibration Measurement Results..... | 6 |
| 6.1 | Return Loss and Impedance In Head Liquid | 6 |
| 6.2 | Return Loss and Impedance In Body Liquid | 6 |
| 6.3 | Mechanical Dimensions | 7 |
| 7 | Validation measurement | 7 |
| 7.1 | Head Liquid Measurement | 8 |
| 7.2 | SAR Measurement Result With Head Liquid | 8 |
| 7.3 | Body Liquid Measurement | 11 |
| 7.4 | SAR Measurement Result With Body Liquid | 12 |
| 8 | List of Equipment | 13 |

Page: 3/13

Template_ACR.DDD.N.YE.MVGB.ISSUE_SAR Réference Dipole v1

This document shall not be reproduced, except in full or in part, without the written approval of MVG. The information contained herein is to be used only for the purpose for which it is submitted and is not to be released in whole or part without written approval of MVG.





1 INTRODUCTION

This document contains a summary of the requirements set forth by the IEC/IEEE 62209-1528 and FCC KDB865664 D01 standards for reference dipoles used for SAR measurement system validations and the measurements that were performed to verify that the product complies with the fore mentioned standards.

2 DEVICE UNDER TEST

| Device Under Test | |
|--------------------------------|-----------------------------------|
| Device Type | COMOSAR 1900 MHz REFERENCE DIPOLE |
| Manufacturer | MVG |
| Model | SID1900 |
| Serial Number | SN 47/21 DIP 1G900-624 |
| Product Condition (new / used) | New |

3 PRODUCT DESCRIPTION

3.1 GENERAL INFORMATION

MVG's COMOSAR Validation Dipoles are built in accordance to the IEC/IEEE 62209-1528 and FCC KDB865664 D01 standards. The product is designed for use with the COMOSAR test bench only.



Figure 1 – MVG COMOSAR Validation Dipole

Page: 4/13

Template_ACR.DDD.N.YEMVGB.ISSUE_SAR Reference Dipole v1

This document shall not be reproduced, except in full or in part, without the written approval of MVG. The information contained herein is to be used only for the purpose for which it is submitted and is not to be released in whole or part without written approval of MVG.

MVG CO., LTD