



深圳市鑫恒阳科技有限公司

<https://www.xhy-2008.com>

SPECIFICATION FOR APPROVAL

客户名称 Customer Name: _____

产品型号 Product Model: _____ H1102

客户料号 Customer P/N : _____

鑫恒阳料号 XINHENG YANG P/N: _____ ZJ. 09. 0245-H1102

产品规格 SPECIFICATIONS: _____ BT FPC

制作日期 Product ion date: _____ 2023-02-13

封样版本 Sample Vers ion: _____ V1.0

鑫恒阳 (XINHENG YANG)		
编制 (FICTION)	品质 (DQE)	研发 (R&D)
客户 (Customer)		
采 购 (PUR)	品质 (QC)	研发 (R&D)



R & D, production and sales of professional wireless terminal antenna



深圳市鑫恒阳科技有限公司

<https://www.xhy-2008.com>

一、The basic parameters:

A. Electrical Characteristics	
Frequency	2400MHZ~2500MHZ
VSWR	< 2
Avg Efficiency	>15%
Impedance	50 ± 15 Ohm
Polarization	Linear
Peak Gain	2.4G:-2.14dBi
B. Material & Mechanical Characteristics	
Material of Radiator	FPC Yellow
Cable Type	Φ 0.81 49±1mm
Connector Type	/
Dimension	26.50*2.90±0.2mm
C. Environmental	
Operation Temperature	- 20 °C ~ + 60 °C
Storage Temperature	- 30 °C ~ + 70 °C

二、Electrical Specification :

Those specifications were specially defined for H1102 model.

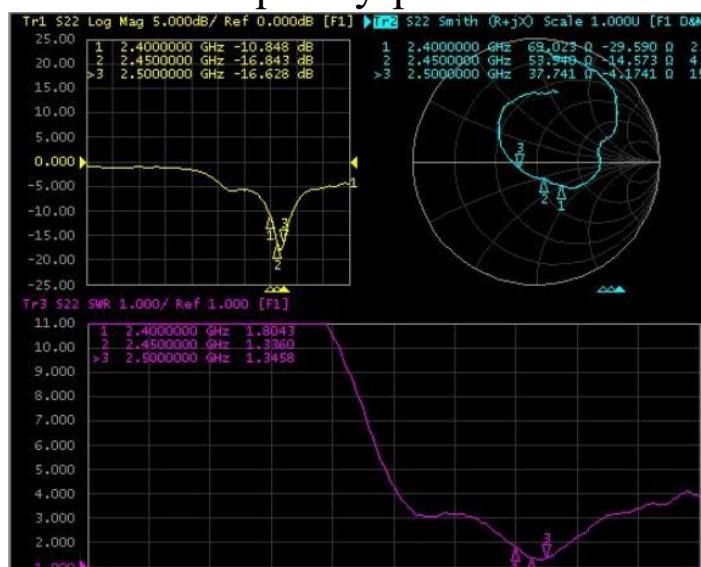
三、VSWR

1 Measuring Method

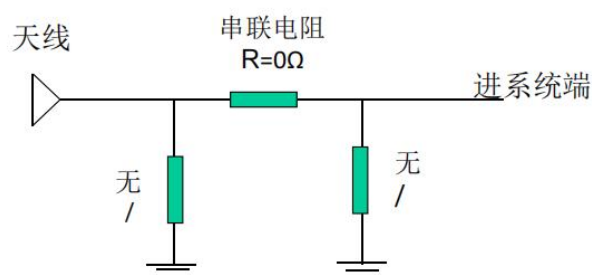
1.A 50 Ω coaxial cable is connected to the antenna. Then this cable is connected to a network analyzer to measure the VSWR

2.Keeping this jig away from metal at least 20cm

2 Measurement frequency points and VSWR value



注意匹配:





深圳市鑫恒阳科技有限公司

<https://www.xhy-2008.com>

四、 Anechoic chamber

Introduction:

Microwave darkroom and no reflection chamber, absorbing short wave darkroom dark room. Microwave darkroom by electromagnetic shielding room, filtering and isolation, grounding device, the ventilation duct, indoor distribution system, monitoring system, ceiling wave material part. It is based on the wave absorbing material as the lining of the shield room, it can absorb the most of the electromagnetic energy into the six wall is a better simulation of the free space conditions.

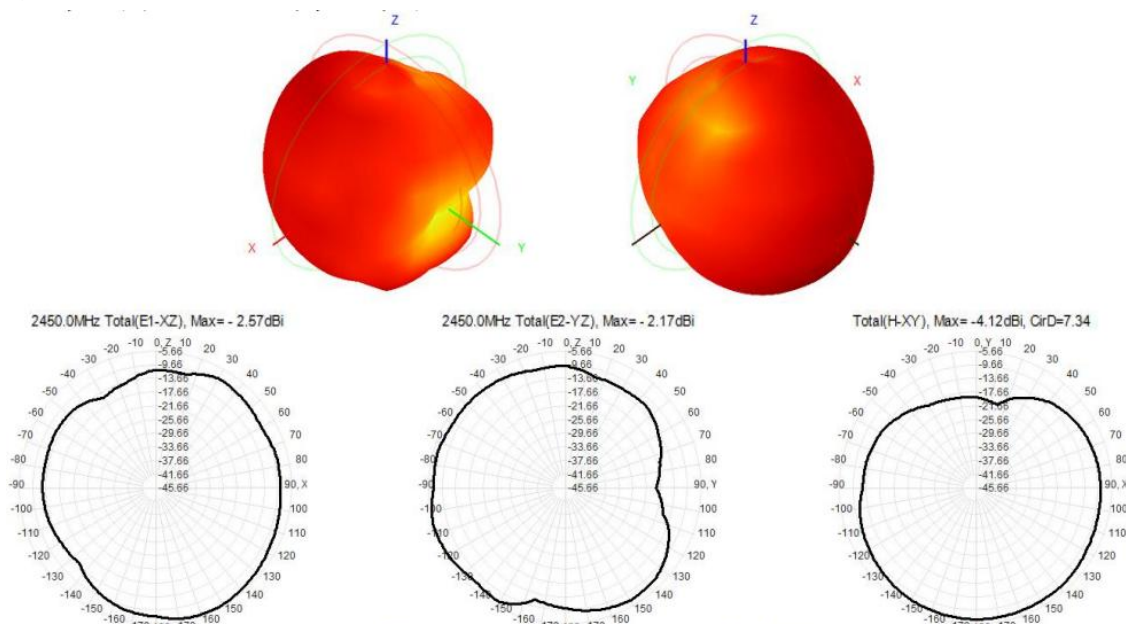
The main working principle of microwave anechoic chamber is according to the electromagnetic wave in the medium from the low magnetic guide magnetic direction of propagation rules, absorbing materials to guide the electromagnetic wave using high permeability, through resonance, a substantial absorption of electromagnetic wave radiation energy, by coupling the electromagnetic energy into heat energy.

main performance :

Frequency range: 400MHz ~ 6GHz ceiling reflected wave loss materials: 400MHz ~ 6GHz is equal to or more than 15dB (microwave absorbing material by composite wave absorbing materials, namely tapered containing carbon sponge suction wave material paste in ferrite)

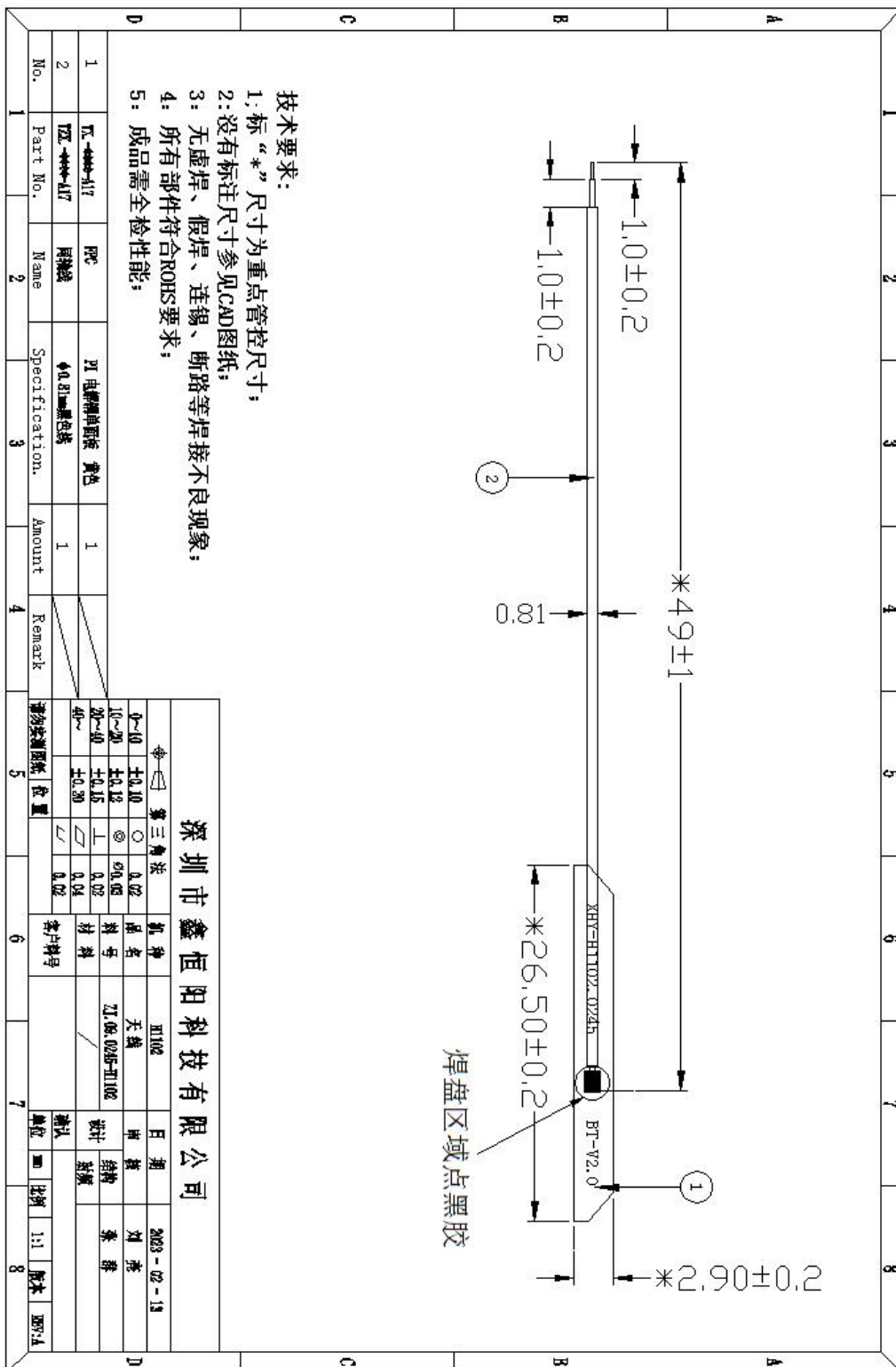


五、Gain table of Antenna



自由空间		
Freq (MHz)	Effi (%)	Gain (dBi)
2400	21.23	-2.59
2410	22.45	-2.63
2420	23.12	-2.71
2430	23.31	-3.05
2440	22.15	-2.36
2450	21.56	-2.57
2460	22.45	-2.71
2470	23.37	-2.51
2480	21.69	-2.14
2490	23.57	-2.83
2500	22.46	-3.17

六、Antenna Dimensions：





深圳市鑫恒阳科技有限公司

<https://www.xhy-2008.com>

七、Antenna assembly drawing:



八、ROHS:

Antenna ZJ. 09. 0245-H1102 meets RoHS requirements.

九、Product packaging instructions:

A. packing should meet the moistureproof, vibration, pressure and mildew proof, etc.

B. the smallest packing unit logo must have the manufacturer trademarks, product model, name, code and quantity.

C. in the attached packing list, certificate of approval, and the factory inspection report.

*****END*****