



Manual

How to run the sensor in normal operation

15.02.2024

Introduction

This device contains licence-exempt transmitter(s)/receiver(s) that comply with Innovation, Science and Economic Development Canada's licence-exempt RSS(s) and complies with part 15 of the FCC Rules. Operation is subject to the following two conditions:

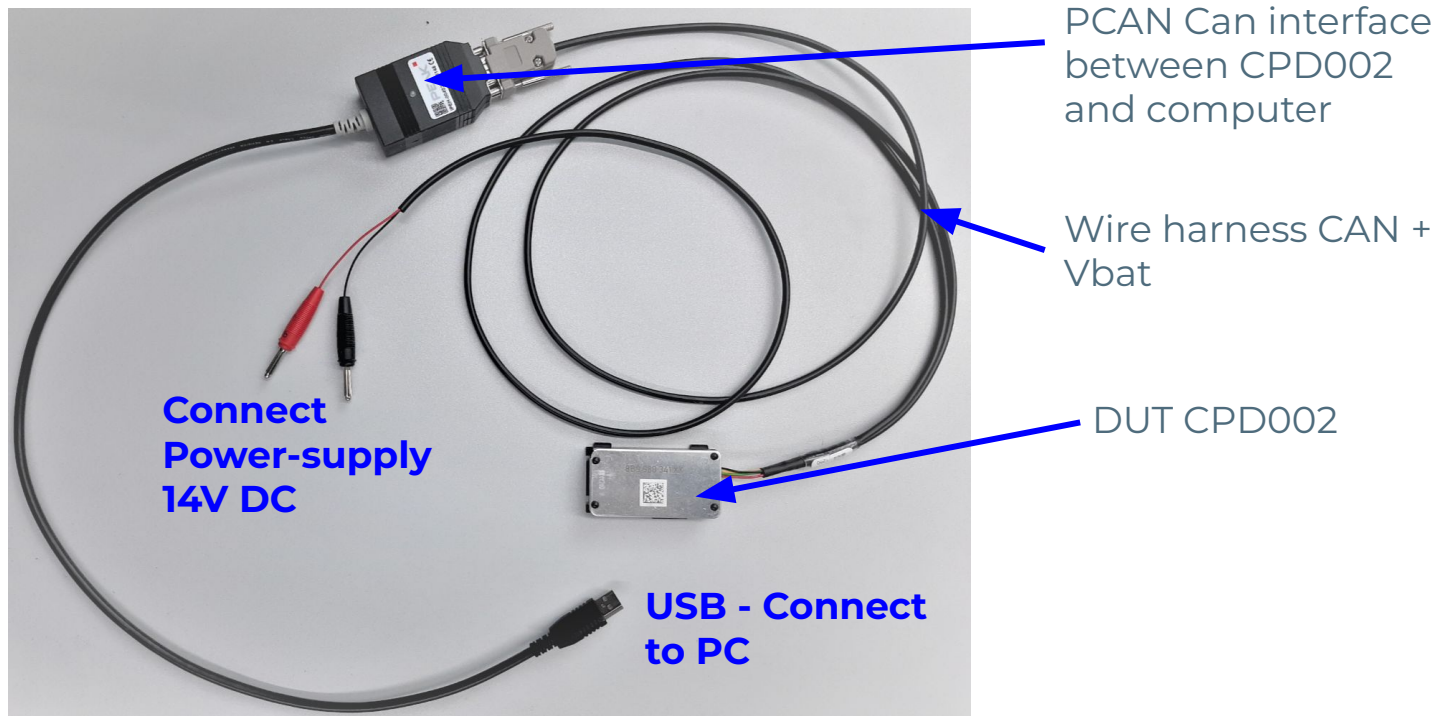
1. This device may not cause harmful interference.
2. This device must accept any interference received, including interference that may cause undesired operation of the device

Changes or modifications made to this equipment not expressly approved by Valeo North America Inc. may void the FCC authorization to operate this equipment

This equipment complies with FCC and ISSED radiation exposure limits set forth for an uncontrolled environment.

This transmitter must not be co-located or operating in conjunction with any other antenna or transmitter.

Setup



Get PCAN running

Install PCAN driver

- Download and install the latest version of the PCAN driver from Peak website:

<https://www.peak-system.com/quick/DrvSetup>



Start LPD_Testing_Tool

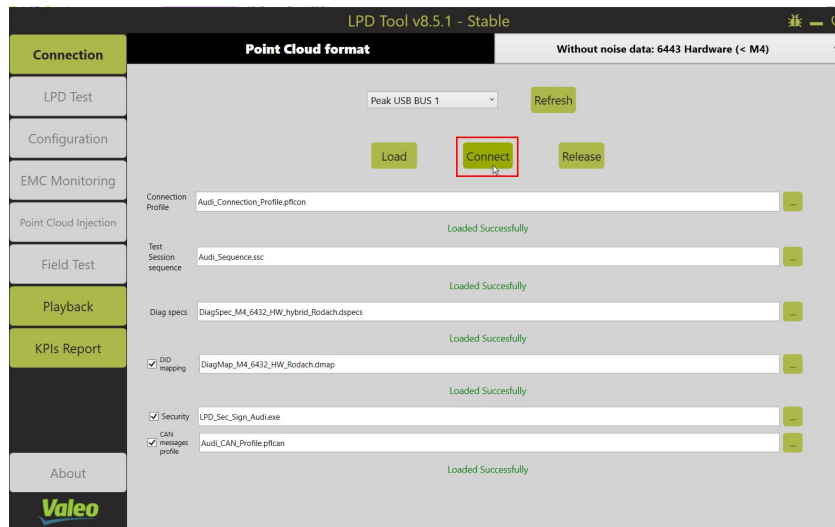
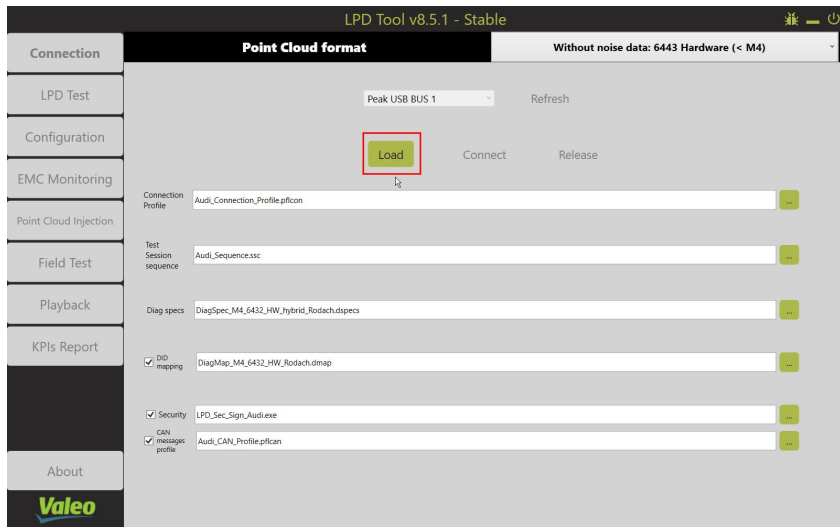
Open LPD_Testing_Tool_V06.00_x64.exe

- Unzip “LPD_Testing_Tool_V08.5.1.zip”
- Connect the DUT via Peak-CAN-interface with the computer
- Open exe

> Homologation > CPD002 > 010 - SamplesPreparation > Session01_CTC-Kickoff > LPD_Testing_Tool_V08.5.1

Name	Änderungsdatum	Typ	Größe
logs	15.02.2024 13:17	Dateiordner	
Recordings	12.02.2024 07:45	Dateiordner	
Tool diag specs	12.02.2024 07:45	Dateiordner	
Audi_CAN_Profile.pfican	08.06.2023 14:13	PFLCAN-Datei	1 KB
Audi_Connection_Profile.pficon	08.06.2023 14:11	PFLCON-Datei	1 KB
Audi_Sequence.ssc	08.06.2023 14:15	SSC-Datei	1 KB
ClosedXML.dll	19.08.2023 01:05	Anwendungserwei...	1.405 KB
Common.Utilities.dll	28.11.2023 09:57	Anwendungserwei...	40 KB
Common.Utilities.dll.config	17.10.2023 14:36	CONFIG-Datei	1 KB
DiagMap_M4_6432_HW_Rodach.dmap	13.12.2023 18:28	DMAP-Datei	2 KB
DiagSpec_M4_6432_HW_hybrid_Rodach...	15.12.2023 09:14	DSPECS-Datei	41 KB
DocumentFormat.OpenXml.dll	06.04.2023 21:08	Anwendungserwei...	5.970 KB
ExcelNumberFormat.dll	02.10.2020 10:42	Anwendungserwei...	30 KB
Irony.dll	04.06.2019 13:33	Anwendungserwei...	141 KB
LiveCharts.dll	20.06.2017 02:26	Anwendungserwei...	149 KB
LiveCharts.Wpf.dll	20.06.2017 02:26	Anwendungserwei...	213 KB
LPD_Sec_Sign_Audi.exe	15.01.2023 14:50	Anwendung	28 KB
LPDTool.exe	04.01.2024 14:58	Anwendung	307 KB
LPDTool.exe.config	27.11.2023 12:34	CONFIG-Datei	3 KB
Newtonsoft.Json.dll	08.03.2023 08:09	Anwendungserwei...	696 KB
PCANBasic.dll	17.10.2023 14:36	Anwendungserwei...	688 KB
PCAN-ISO-TP.dll	17.10.2023 14:36	Anwendungserwei...	450 KB

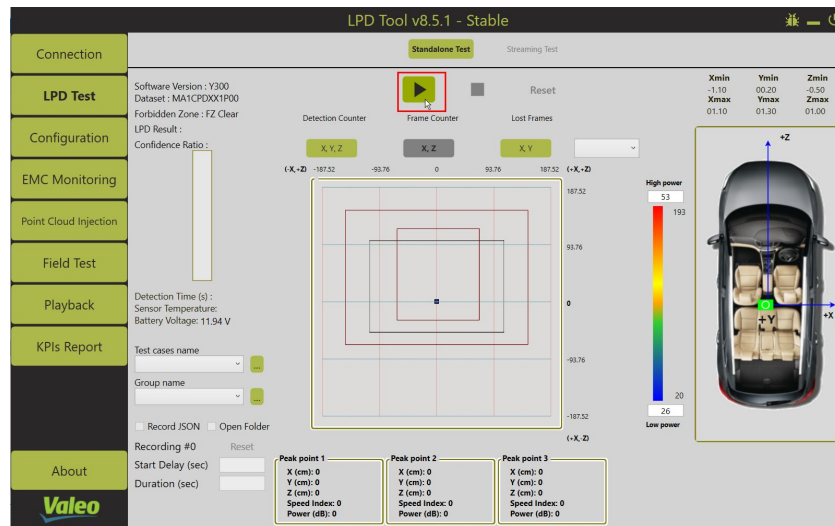
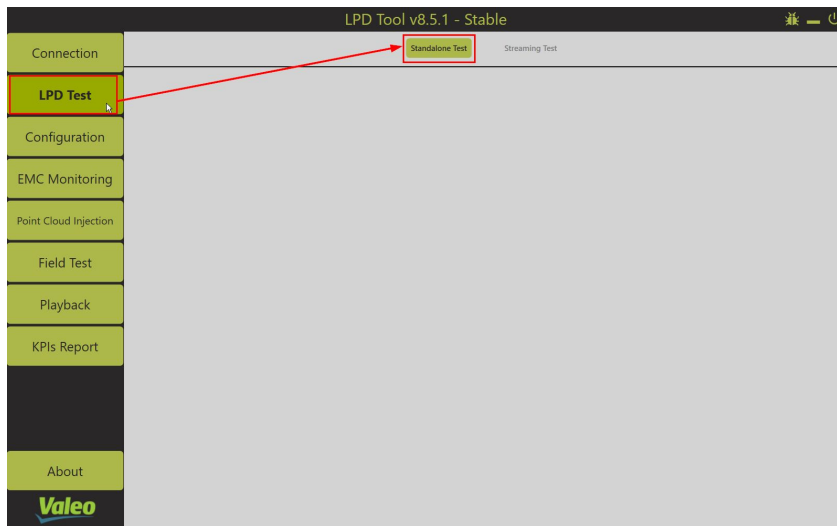
Sensing activation



Description

- Load settings as shown in the left picture
- Press connect (right picture)

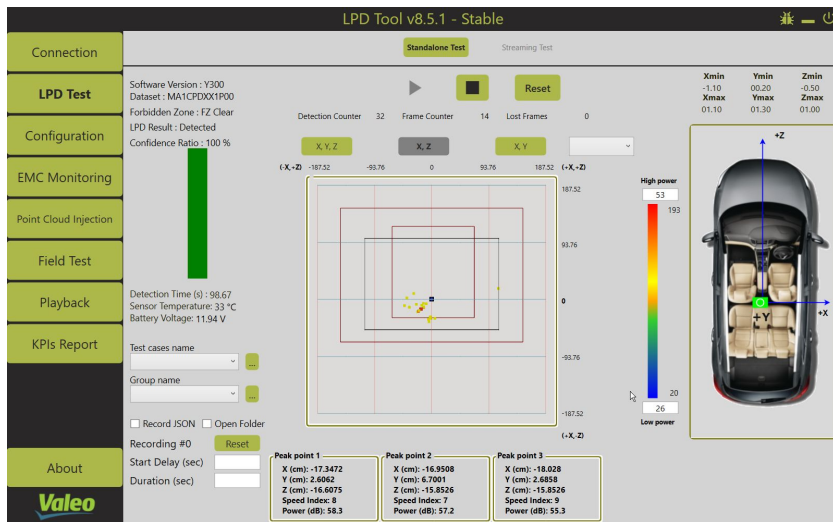
Sensing activation



Description

- Switch to the LPD Test tab on the left and press “Standalone Test”
- Press “play”

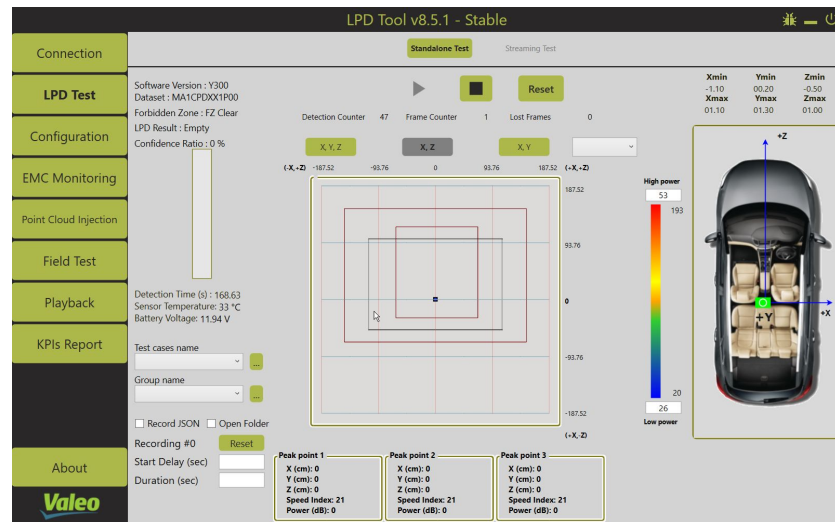
Sensing activation



Example: Baby in the region of the left seat

Description

A pointcloud will be displayed, showing the target position and the confidence ratio for life presence detection on the left



Example: An empty vehicle, showing no pointcloud



SMART TECHNOLOGY
FOR SMARTER MOBILITY