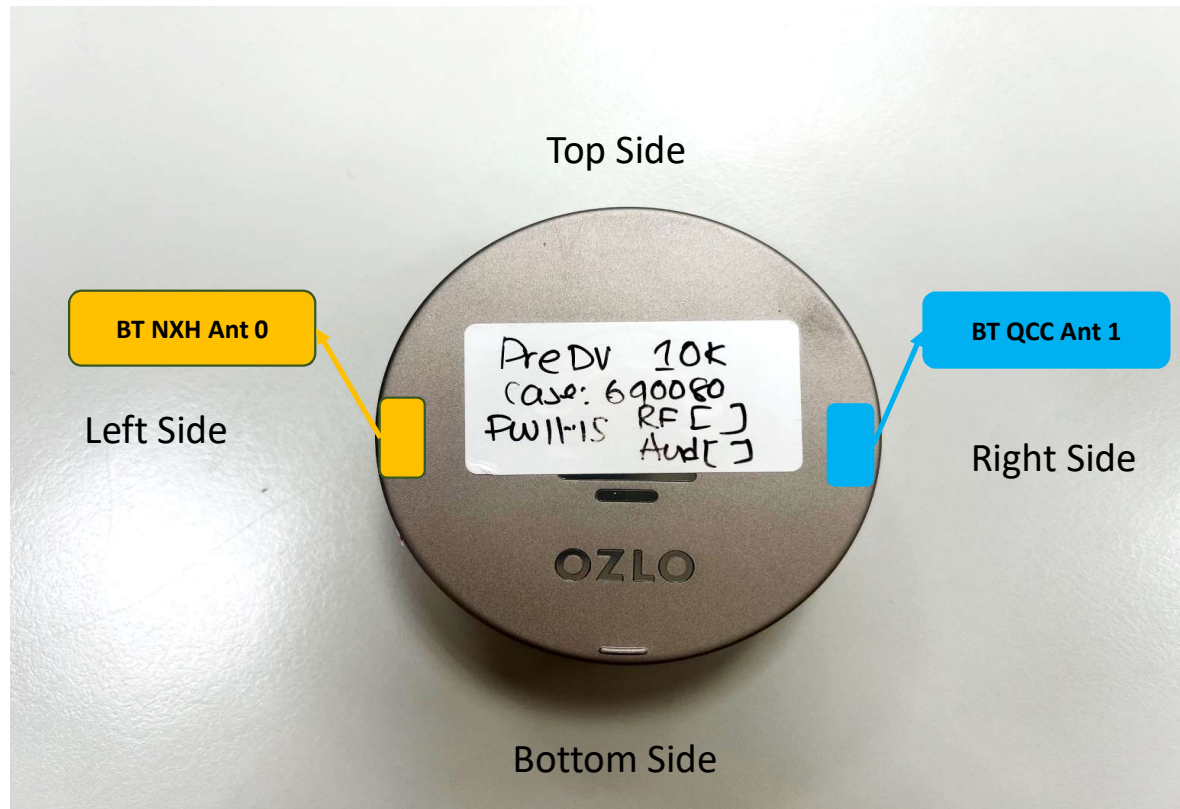


Photographs of EUT Setup and Antenna Location

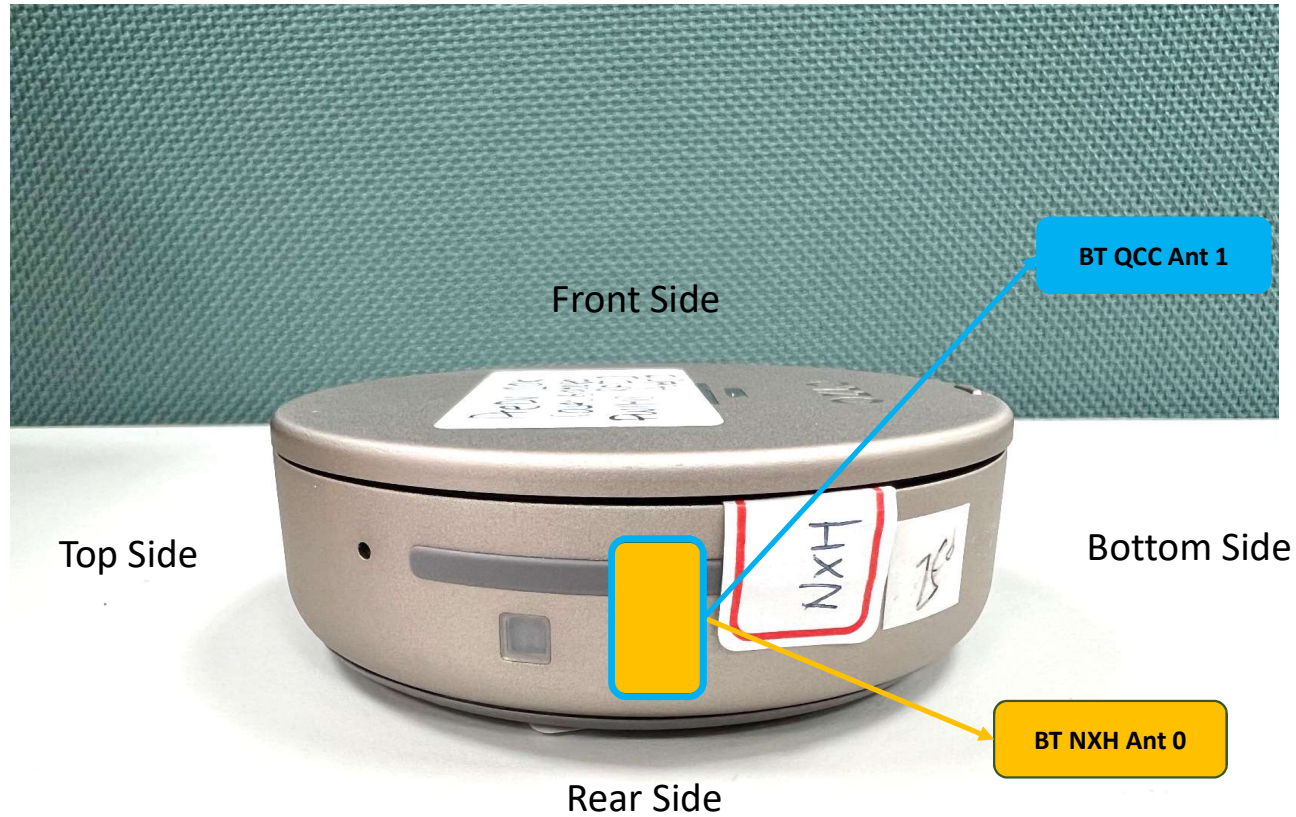
The photographs of EUT and setup for SAR testing are shown as follows.

<Front Face View> Charging Case



Antenna	To Top Side	To Bottom Side	To Left Side	To Right Side
	(mm)	(mm)	(mm)	(mm)
BT NXH Ant 0	50.20	50.20	3.50	74.40
BT QCC Ant 1	50.20	50.20	74.40	3.50

<Left Side View> Charging Case



Antenna	To Front Side	To Rear Side
	(mm)	(mm)
BT NXH Ant 0	8.10	6.30
BT QCC Ant 1	8.10	6.30

<Photographs of Body SAR Test Setup>

