

Measurement Report for Band 2, FRONT, H4, Antenna 1

Exposure Conditions

Band	Band 2	TSL Permittivity	40.0
Frequency [MHz] Channel Number	1852.4 9262	TSL Conductivity [S/m]	1.42
Group UID	WCDMA 10011-CAC	Phantom Section TSL	Flat HSL
Conversion Factor	8.74	Test Distance [mm]	5.00
Communication Configuration	UMTS-FDD (WCDMA)		

Hardware Setup

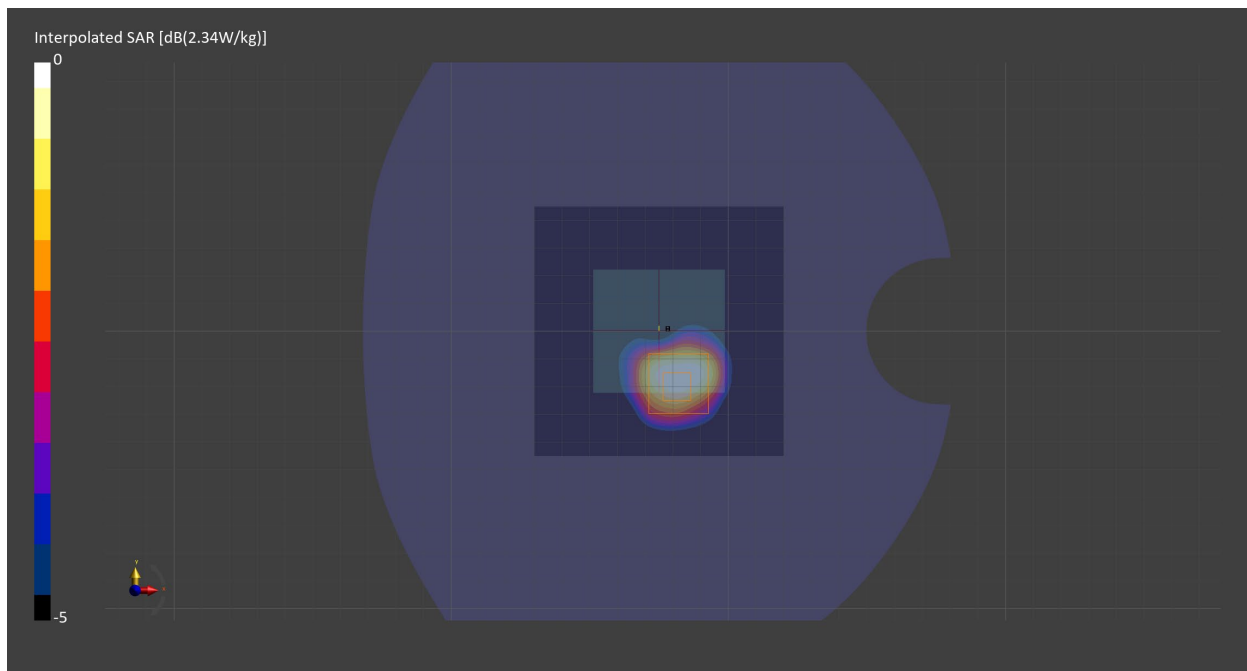
Probe Calibration Date	EX3DV4 - SN7709 2022-12-12	Phantom	Twin-SAM V8.0 (30deg probe tilt) - SN1742
DAE Calibration Date	DAE4 Sn1714 2022-11-23	TSL Meas. Date	HBBL-600-10000 2023-Jun-07

Scans Setup

	Area Scan	Zoom Scan
Grid Extents [mm]	90.0 x 90.0	30.0 x 30.0 x 30.0
Grid Steps [mm]	15.0 x 15.0	6.0 x 6.0 x 1.5
Sensor Surface [mm]	3.0	1.4
Graded Grid	n/a	Yes
M2/M1 [%]		77.8
Dist 3dB Peak [mm]		9.6

Measurement Results

	Area Scan	Zoom Scan
psSAR1g [W/Kg]	0.937	1.10
psSAR10g [W/Kg]	0.515	0.522
Power Drift [dB]	n/a	-0.15



Measurement Report for Band 4, BACK, H4, Antenna 1

Exposure Conditions

Band	Band 4	TSL Permittivity	40.5
Frequency [MHz] Channel Number	1732.6 1413	TSL Conductivity [S/m]	1.38
Group UID	WCDMA 10011-CAC	Phantom Section TSL	Flat HSL
Conversion Factor	9.05	Test Distance [mm]	5.00
Communication Configuration	UMTS-FDD (WCDMA)		

Hardware Setup

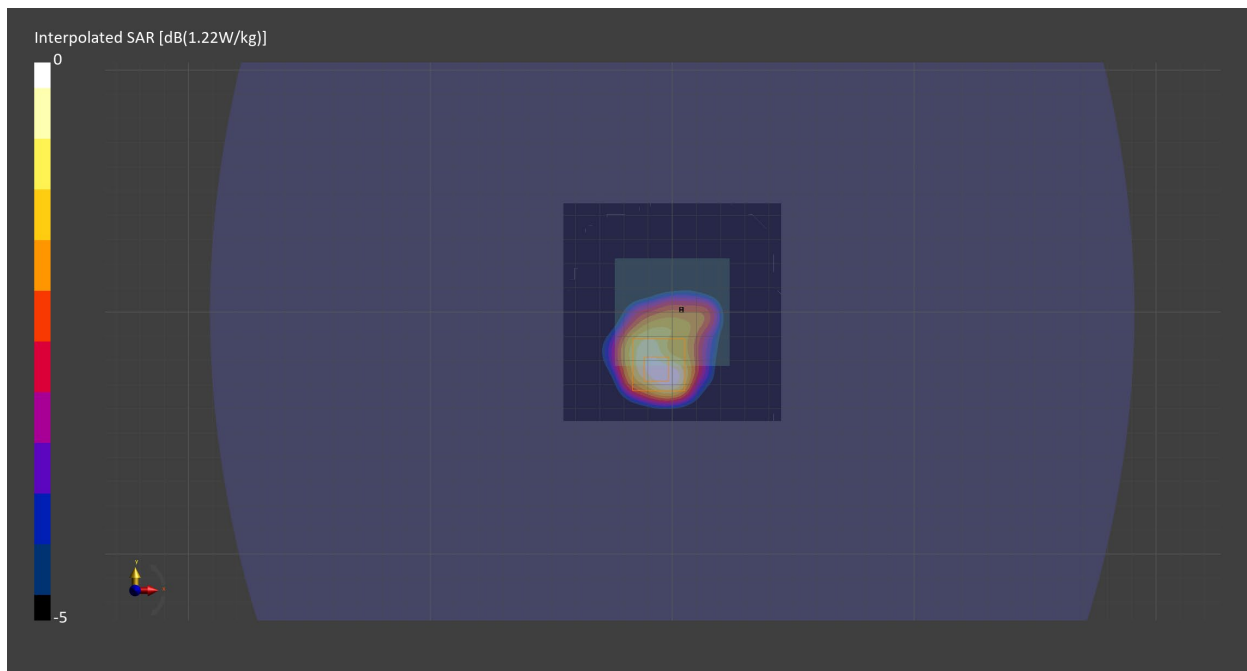
Probe Calibration Date	EX3DV4 - SN7709 2022-12-12	Phantom	ELI V5.0 (20deg probe tilt) - SN1196
DAE Calibration Date	DAE4 Sn1714 2022-11-23	TSL Meas. Date	HBBL-600-10000 2023-May-31

Scans Setup

	Area Scan	Zoom Scan
Grid Extents [mm]	90.0 x 90.0	30.0 x 30.0 x 30.0
Grid Steps [mm]	15.0 x 15.0	6.0 x 6.0 x 1.5
Sensor Surface [mm]	3.0	1.4
Graded Grid	n/a	Yes
M2/M1 [%]		77.4
Dist 3dB Peak [mm]		9.6

Measurement Results

	Area Scan	Zoom Scan
psSAR1g [W/Kg]	0.472	0.573
psSAR10g [W/Kg]	0.279	0.280
Power Drift [dB]	0.02	-0.03



Measurement Report for Band 5, BACK, H4+Cloth+B0, Antenna 1

Exposure Conditions

Band	Band 5	TSL Permittivity	42.3
Frequency [MHz] Channel Number	836.6 4183	TSL Conductivity [S/m]	0.949
Group UID	WCDMA 10011-CAC	Phantom Section TSL	Flat HSL
Conversion Factor	9.91	Test Distance [mm]	0.00
Communication Configuration	UMTS-FDD (WCDMA)		

Hardware Setup

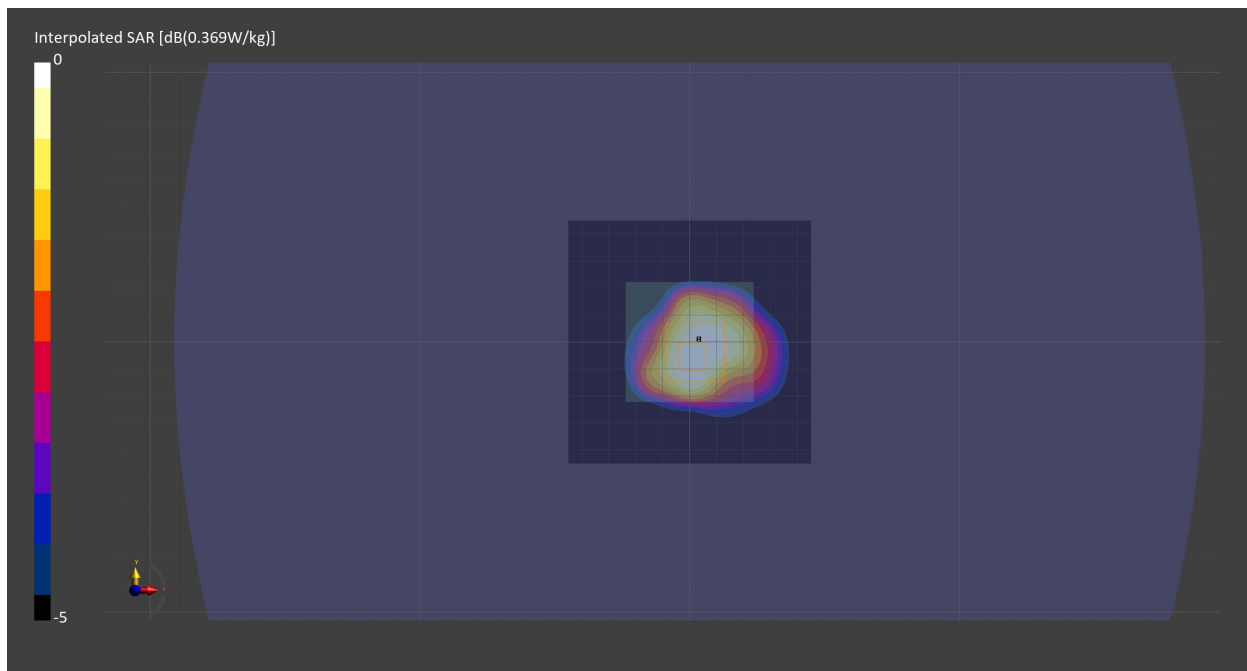
Probe Calibration Date	EX3DV4 - SN7709 2022-12-12	Phantom	ELI V5.0 (20deg probe tilt) - SN1196
DAE Calibration Date	DAE4 Sn1714 2022-11-23	TSL Meas. Date	HBBL-600-10000 2023-May-31

Scans Setup

	Area Scan	Zoom Scan
Grid Extents [mm]	90.0 x 90.0	30.0 x 30.0 x 30.0
Grid Steps [mm]	15.0 x 15.0	6.0 x 6.0 x 1.5
Sensor Surface [mm]	3.0	1.4
Graded Grid	n/a	Yes
M2/M1 [%]		91.9
Dist 3dB Peak [mm]		18.4

Measurement Results

	Area Scan	Zoom Scan
psSAR1g [W/Kg]	0.322	0.343
psSAR10g [W/Kg]	0.216	0.228
Power Drift [dB]	n/a	-0.04



Measurement Report for Band 2, FRONT, H4, Antenna 1

Exposure Conditions

Band	Band 2	TSL Permittivity	40.0
Frequency [MHz] Channel Number	1860.0 18700	TSL Conductivity [S/m]	1.42
Group UID	LTE-FDD 10169-CAF	Phantom Section TSL	Flat HSL
Conversion Factor	8.74	Test Distance [mm]	5.00
Communication Configuration	LTE-FDD (SC-FDMA, 1 RB, 20 MHz, QPSK) RBPosition:High AntennaCfg:SISO		

Hardware Setup

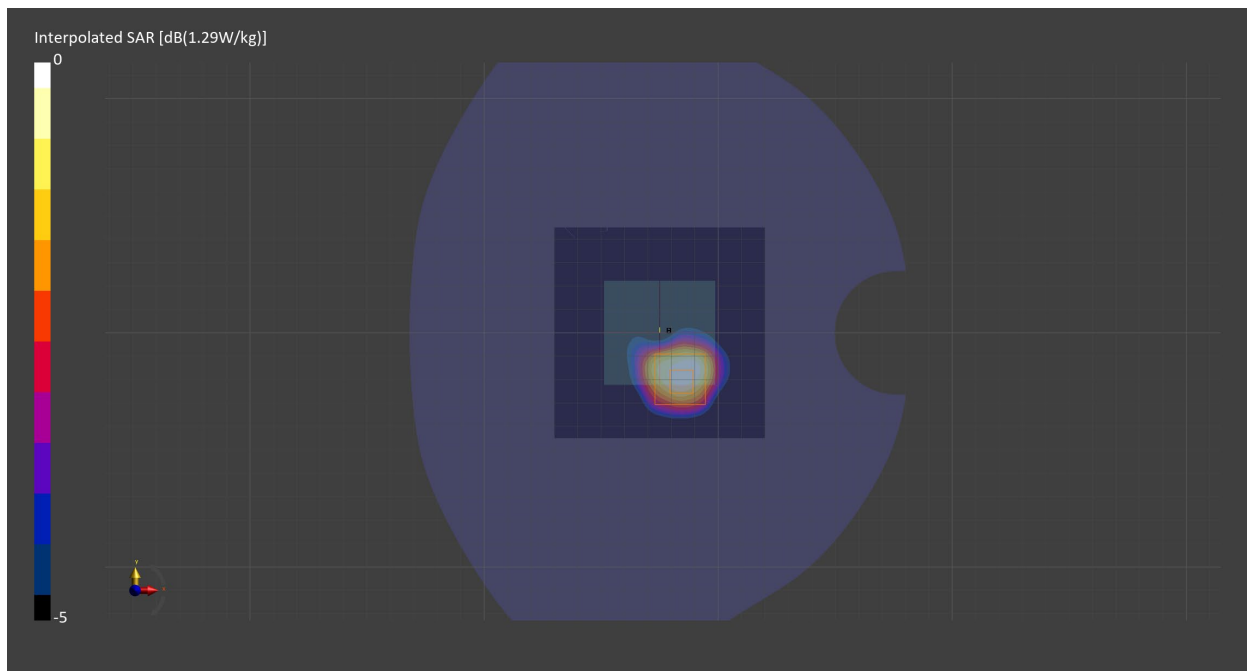
Probe Calibration Date	EX3DV4 - SN7709 2022-12-12	Phantom	Twin-SAM V8.0 (30deg probe tilt) - SN1742
DAE Calibration Date	DAE4 Sn1714 2022-11-23	TSL Meas. Date	HBBL-600-10000 2023-Jun-07

Scans Setup

	Area Scan	Zoom Scan
Grid Extents [mm]	90.0 x 90.0	30.0 x 30.0 x 30.0
Grid Steps [mm]	15.0 x 15.0	6.0 x 6.0 x 1.5
Sensor Surface [mm]	3.0	1.4
Graded Grid	n/a	Yes
M2/M1 [%]		77.0
Dist 3dB Peak [mm]		9.6

Measurement Results

	Area Scan	Zoom Scan
psSAR1g [W/Kg]	1.08	1.26
psSAR10g [W/Kg]	0.598	0.613
Power Drift [dB]	n/a	0.00



Measurement Report for Band 7, BACK, H4+Cloth+B0, Antenna 1

Exposure Conditions

Band	Band 7	TSL Permittivity	37.4
Frequency [MHz] Channel Number	2510.0 20850	TSL Conductivity [S/m]	1.88
Group UID	LTE-FDD 10169-CAF	Phantom Section TSL	Flat HSL
Conversion Factor	8.2	Test Distance [mm]	0.00
Communication Configuration	LTE-FDD (SC-FDMA, 1 RB, 20 MHz, QPSK) RBPosition:Low AntennaCfg:SISO		

Hardware Setup

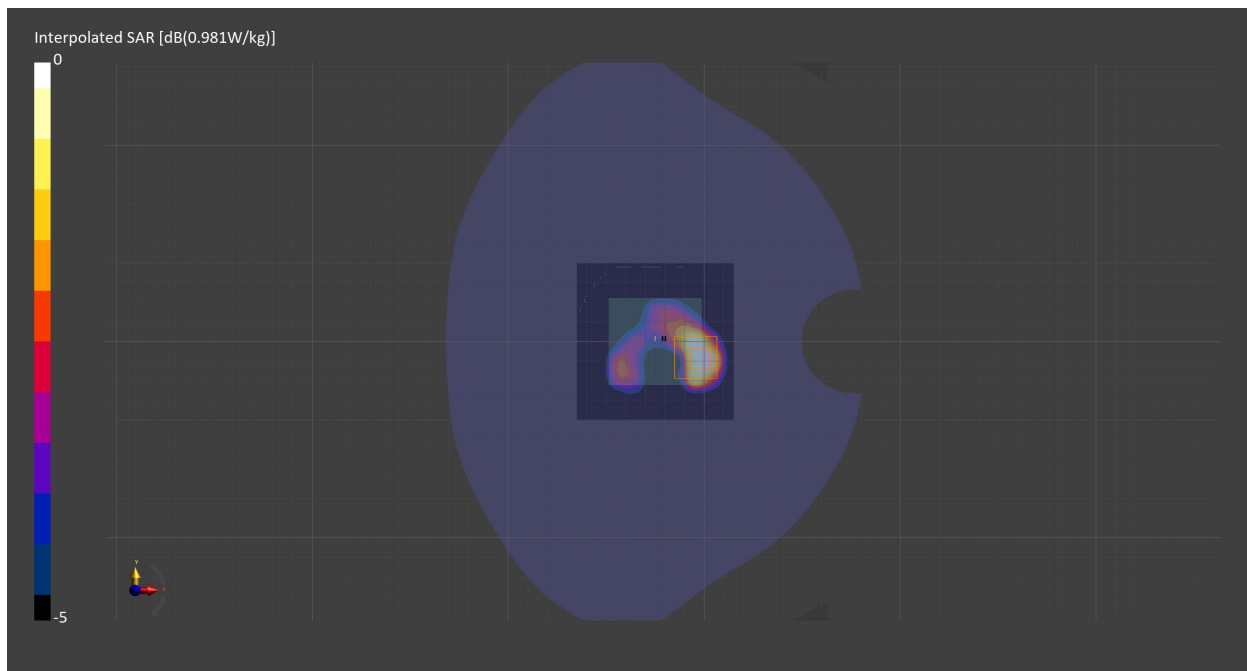
Probe Calibration Date	EX3DV4 - SN7709 2022-12-12	Phantom	Twin-SAM V8.0 (30deg probe tilt) - SN1742
DAE Calibration Date	DAE4 Sn1714 2022-11-23	TSL Meas. Date	HBBL-600-10000 2023-Jun-12

Scans Setup

	Area Scan	Zoom Scan
Grid Extents [mm]	80.0 x 80.0	30.0 x 30.0 x 30.0
Grid Steps [mm]	10.0 x 10.0	5.0 x 5.0 x 1.5
Sensor Surface [mm]	3.0	1.4
Graded Grid	n/a	Yes
M2/M1 [%]		73.6
Dist 3dB Peak [mm]		7.7

Measurement Results

	Area Scan	Zoom Scan
psSAR1g [W/Kg]	0.779	1.29
psSAR10g [W/Kg]	0.384	0.582
Power Drift [dB]	n/a	-0.06



Measurement Report for Band 12, BACK, H4+Cloth+B0, Antenna 1

Exposure Conditions

Band	Band 12	TSL Permittivity	42.8
Frequency [MHz] Channel Number	704.0 23060	TSL Conductivity [S/m]	0.899
Group UID	LTE-FDD 10175-CAH	Phantom Section TSL	Flat HSL
Conversion Factor	10.56	Test Distance [mm]	0.00
Communication Configuration	LTE-FDD (SC-FDMA, 1 RB, 10 MHz, QPSK) RBPosition:High AntennaCfg:SISO		

Hardware Setup

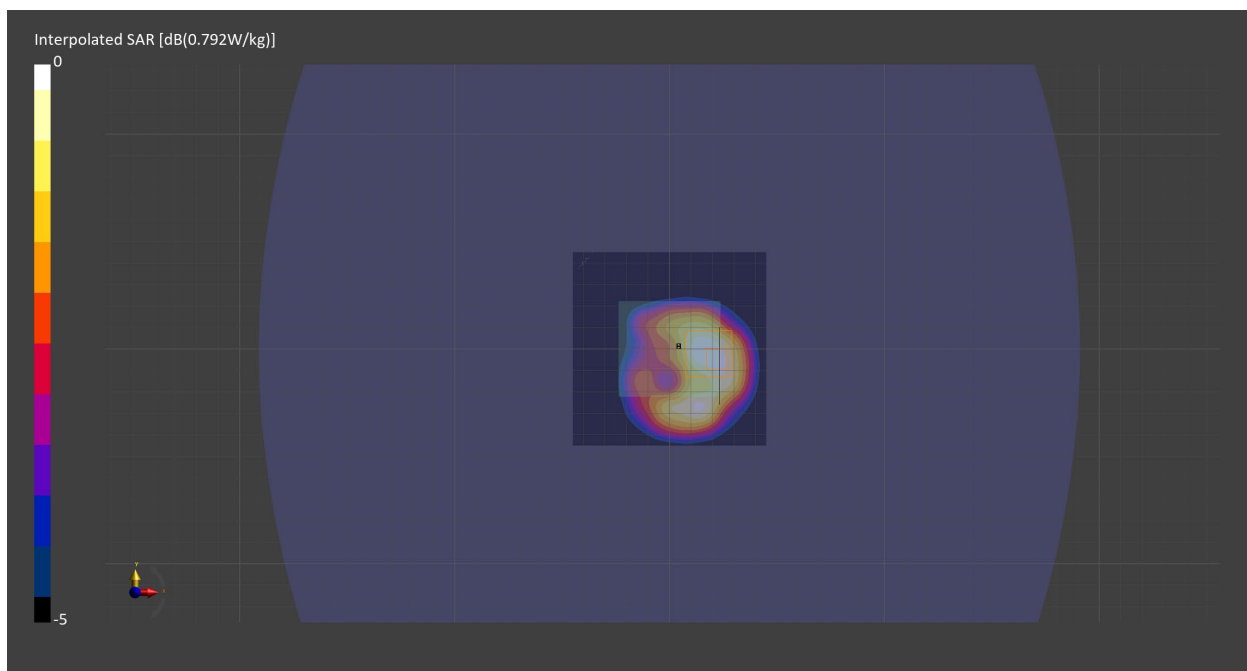
Probe Calibration Date	EX3DV4 - SN7709 2022-12-12	Phantom	ELI V5.0 (20deg probe tilt) - SN1196
DAE Calibration Date	DAE4 Sn1714 2022-11-23	TSL Meas. Date	HBBL-600-10000 2023-May-31

Scans Setup

	Area Scan	Zoom Scan
Grid Extents [mm]	90.0 x 90.0	30.0 x 30.0 x 30.0
Grid Steps [mm]	15.0 x 15.0	6.0 x 6.0 x 1.5
Sensor Surface [mm]	3.0	1.4
Graded Grid	n/a	Yes
M2/M1 [%]		77.6
Dist 3dB Peak [mm]		11.9

Measurement Results

	Area Scan	Zoom Scan
psSAR1g [W/Kg]	0.390	0.405
psSAR10g [W/Kg]	0.260	0.242
Power Drift [dB]	0.07	-0.06



Measurement Report for Band 26, BACK, H4+Cloth+B0, Antenna 1

Exposure Conditions

Band	Band 26	TSL Permittivity	42.3
Frequency [MHz] Channel Number	841.5 26965	TSL Conductivity [S/m]	0.952
Group UID	LTE-FDD 10181-CAF	Phantom Section TSL	Flat HSL
Conversion Factor	9.91	Test Distance [mm]	0.00
Communication Configuration	LTE-FDD (SC-FDMA, 1 RB, 15 MHz, QPSK) RBPosition:Mid AntennaCfg:SISO		

Hardware Setup

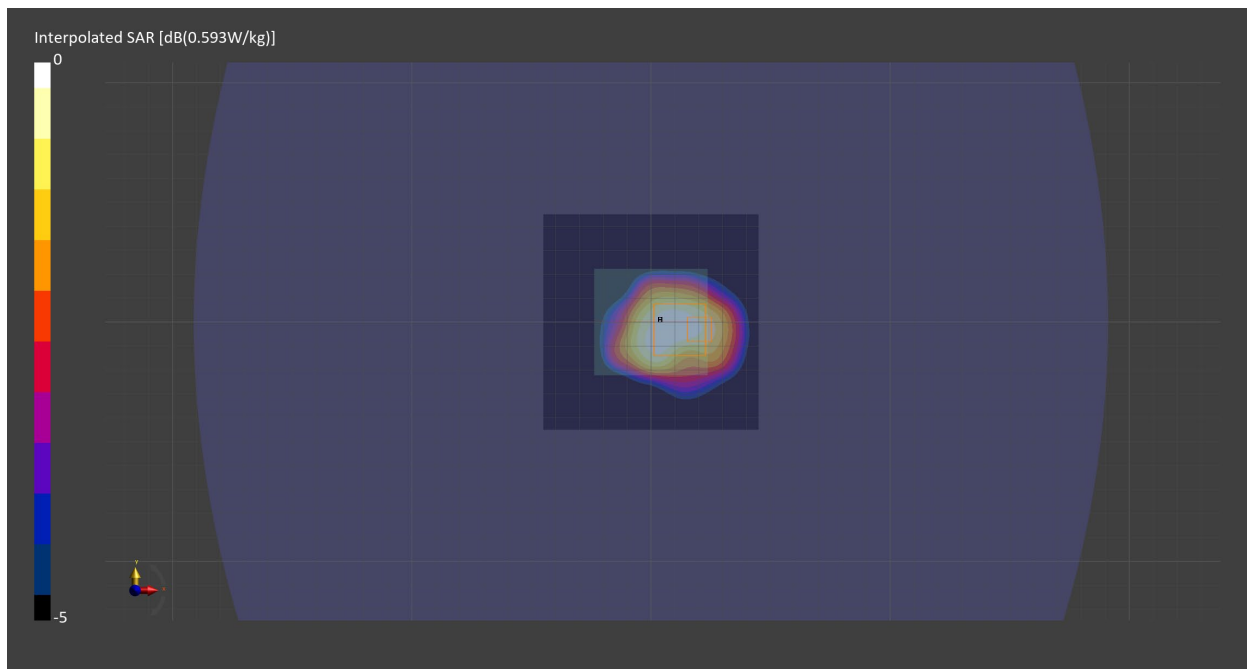
Probe Calibration Date	EX3DV4 - SN7709 2022-12-12	Phantom	ELI V5.0 (20deg probe tilt) - SN1196
DAE Calibration Date	DAE4 Sn1714 2022-11-23	TSL Meas. Date	HBBL-600-10000 2023-May-31

Scans Setup

	Area Scan	Zoom Scan
Grid Extents [mm]	90.0 x 90.0	30.0 x 30.0 x 30.0
Grid Steps [mm]	15.0 x 15.0	6.0 x 6.0 x 1.5
Sensor Surface [mm]	3.0	1.4
Graded Grid	n/a	Yes
M2/M1 [%]		77.2
Dist 3dB Peak [mm]		11.1

Measurement Results

	Area Scan	Zoom Scan
psSAR1g [W/Kg]	0.512	0.403
psSAR10g [W/Kg]	0.345	0.255
Power Drift [dB]	n/a	-0.01



Measurement Report for Band 41, BACK, , Antenna 1

Exposure Conditions

Band	Band 41	TSL Permittivity	37.1
Frequency [MHz] Channel Number	2680.0 41490	TSL Conductivity [S/m]	1.98
Group UID	LTE-TDD 10435-AAG	Phantom Section TSL	Flat HSL
Conversion Factor	7.67	Test Distance [mm]	0.00
Communication Configuration	LTE-TDD (SC-FDMA, 1 RB, 20 MHz, QPSK, UL Subframe=2,3,4,7,8,9) RBPosition:Low AntennaCfg:SISO		

Hardware Setup

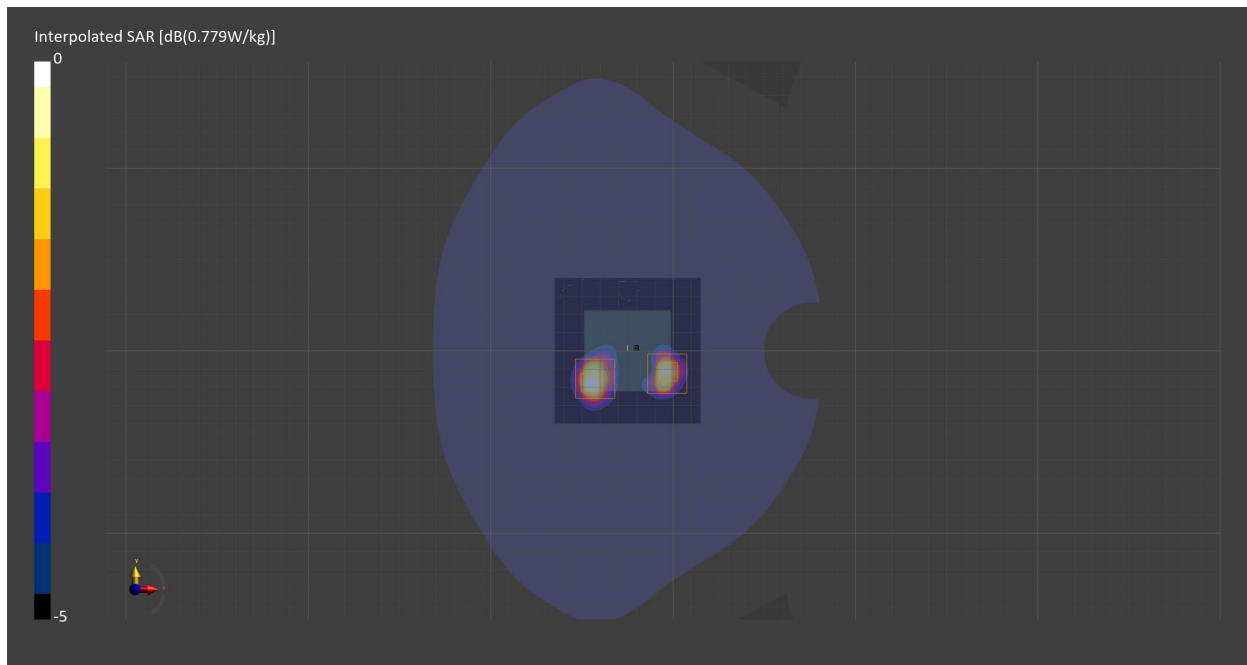
Probe Calibration Date	EX3DV4 - SN7711 2023-03-29	Phantom	Twin-SAM V8.0 (30deg probe tilt) - SN2082
DAE Calibration Date	DAE4 Sn1716 2023-03-16	TSL Meas. Date	HBBL-600-10000 2023-Jul-11

Scans Setup

	Area Scan	Zoom Scan	Secondary Zoom Scan
Grid Extents [mm]	80.0 x 80.0	30.0 x 30.0 x 30.0	30.0 x 30.0 x 30.0
Grid Steps [mm]	10.0 x 10.0	5.0 x 5.0 x 1.5	5.0 x 5.0 x 1.5
Sensor Surface [mm]	3.0	1.4	1.4
Graded Grid	n/a	Yes	Yes
M2/M1 [%]		74.0	74.3
Dist 3dB Peak [mm]		8.5	7.0

Measurement Results

	Area Scan	Zoom Scan	Secondary Zoom Scan
psSAR1g [W/Kg]	0.579	0.550	0.524
psSAR10g [W/Kg]	0.256	0.243	0.217
Power Drift [dB]	n/a	-0.06	-0.12



Measurement Report for Band 66, BACK, H4+Cloth+B0, Antenna 1

Exposure Conditions

Band	Band 66	TSL Permittivity	39.0
Frequency [MHz] Channel Number	1720.0 132072	TSL Conductivity [S/m]	1.30
Group UID	LTE-FDD 10169-CAF	Phantom Section TSL	Flat HSL
Conversion Factor	8.64	Test Distance [mm]	0.00
Communication Configuration	LTE-FDD (SC-FDMA, 1 RB, 20 MHz, QPSK) RBPosition:Low AntennaCfg:SISO		

Hardware Setup

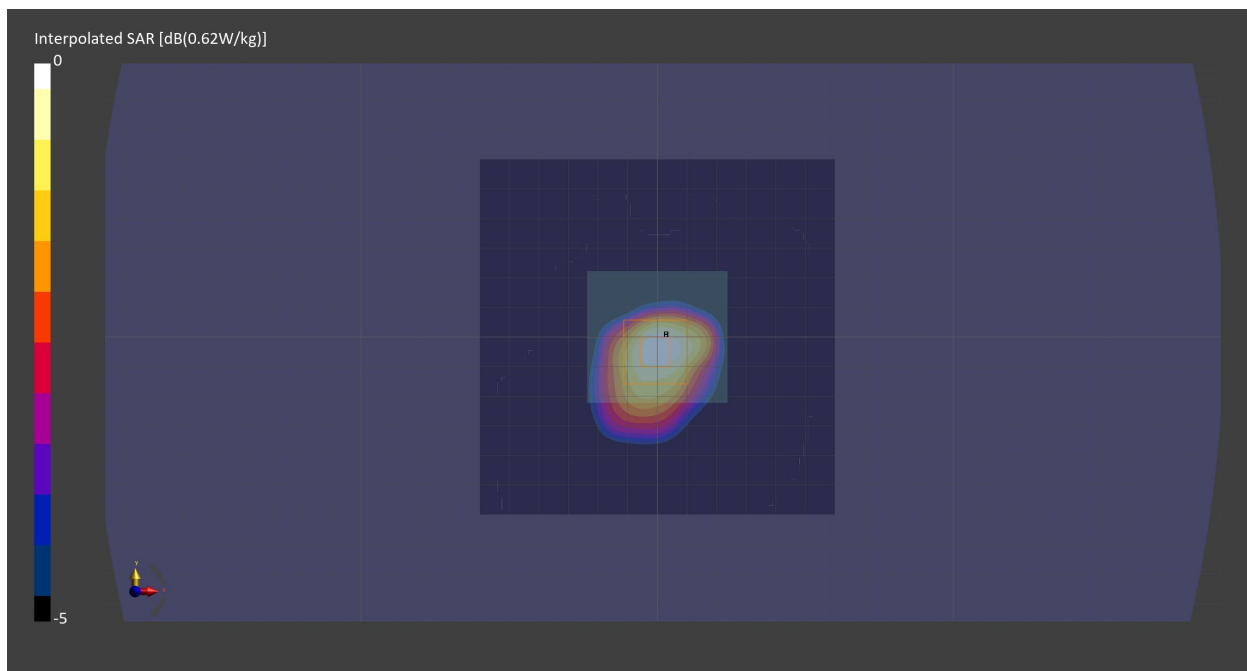
Probe Calibration Date	EX3DV4 - SN7711 2023-03-29	Phantom	ELI V8.0 (20deg probe tilt) - SN2160
DAE Calibration Date	DAE4 Sn1716 2023-03-16	TSL Meas. Date	HBBL-600-10000 2023-May-26

Scans Setup

	Area Scan	Zoom Scan
Grid Extents [mm]	120.0 x 120.0	30.0 x 30.0 x 30.0
Grid Steps [mm]	15.0 x 15.0	6.0 x 6.0 x 1.5
Sensor Surface [mm]	3.0	1.4
Graded Grid	n/a	Yes
M2/M1 [%]		92.8
Dist 3dB Peak [mm]		15.2

Measurement Results

	Area Scan	Zoom Scan
psSAR1g [W/Kg]	0.511	0.573
psSAR10g [W/Kg]	0.299	0.352
Power Drift [dB]	-0.09	-0.01



Measurement Report for Band 71, BACK, H4, Antenna 1

Exposure Conditions

Band	Band 71	TSL Permittivity	42.9
Frequency [MHz] Channel Number	688.0 133372	TSL Conductivity [S/m]	0.895
Group UID	LTE-FDD 10169-CAF	Phantom Section TSL	Flat HSL
Conversion Factor	10.56	Test Distance [mm]	5.00
Communication Configuration	LTE-FDD (SC-FDMA, 1 RB, 20 MHz, QPSK) RBPosition:High AntennaCfg:SISO		

Hardware Setup

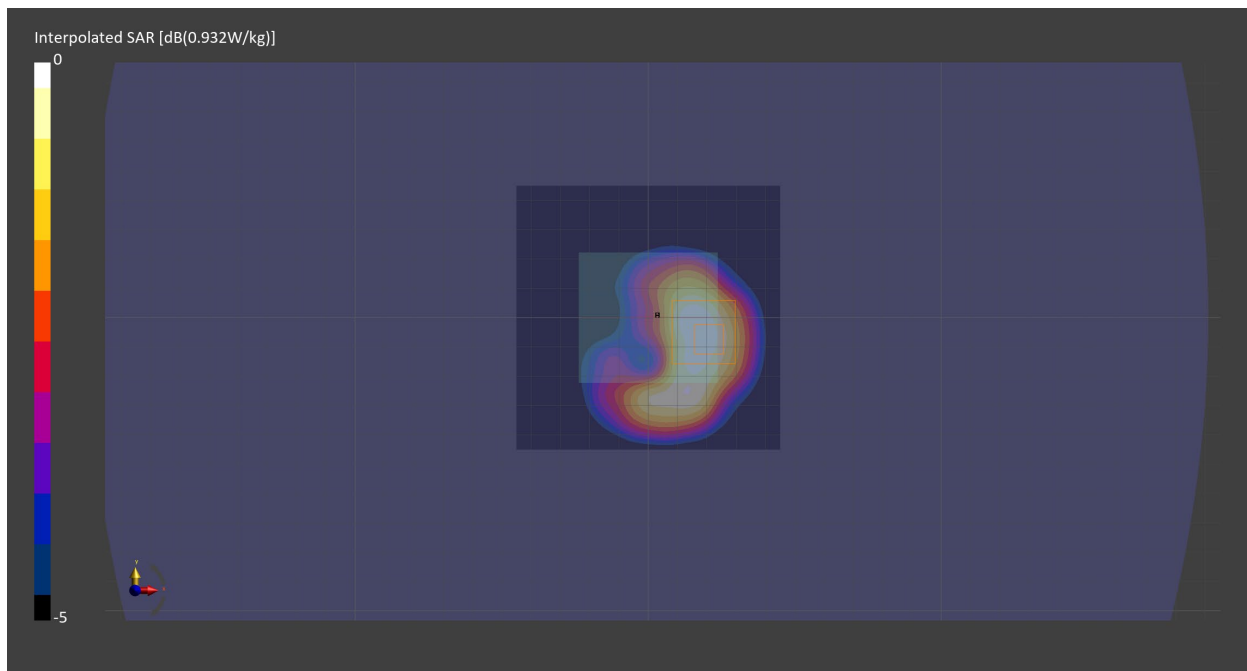
Probe Calibration Date	EX3DV4 - SN7709 2022-12-12	Phantom	ELI V5.0 (20deg probe tilt) - SN1196
DAE Calibration Date	DAE4 Sn1714 2022-11-23	TSL Meas. Date	HBBL-600-10000 2023-May-31

Scans Setup

	Area Scan	Zoom Scan
Grid Extents [mm]	90.0 x 90.0	30.0 x 30.0 x 30.0
Grid Steps [mm]	15.0 x 15.0	6.0 x 6.0 x 1.5
Sensor Surface [mm]	3.0	1.4
Graded Grid	n/a	Yes
M2/M1 [%]		76.4
Dist 3dB Peak [mm]		9.4

Measurement Results

	Area Scan	Zoom Scan
psSAR1g [W/Kg]	0.435	0.444
psSAR10g [W/Kg]	0.288	0.256
Power Drift [dB]	n/a	-0.02



Measurement Report for WLAN 2.4GHz, BACK, H4+Cloth+B0, Antenna 2

Exposure Conditions

Band	WLAN 2.4GHz	TSL Permittivity	39.9
Frequency [MHz] Channel Number	2437.0 6	TSL Conductivity [S/m]	1.80
Group UID	WLAN 10012-CAB	Phantom Section TSL	Flat HSL
Conversion Factor	8.05	Test Distance [mm]	0.00
Communication Configuration	IEEE 802.11b WiFi 2.4 GHz (DSSS, 1 Mbps)		

Hardware Setup

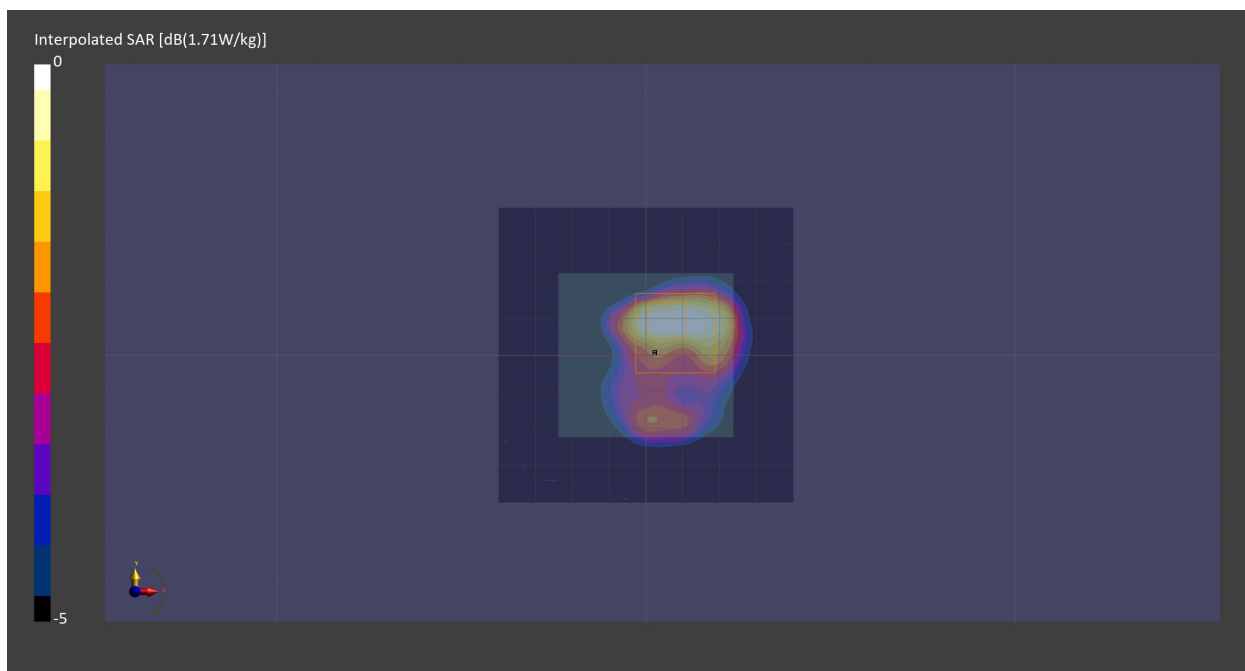
Probe Calibration Date	EX3DV4 - SN7710 2023-02-03	Phantom	ELI V8.0 (20deg probe tilt) - SN2081
DAE Calibration Date	DAE4 Sn1715 2023-01-23	TSL Meas. Date	HBBL-600-10000 2023-May-15

Scans Setup

	Area Scan	Zoom Scan
Grid Extents [mm]	80.0 x 80.0	30.0 x 30.0 x 30.0
Grid Steps [mm]	10.0 x 10.0	5.0 x 5.0 x 1.5
Sensor Surface [mm]	3.0	1.4
Graded Grid	n/a	Yes
M2/M1 [%]		74.0
Dist 3dB Peak [mm]		6.8

Measurement Results

	Area Scan	Zoom Scan
psSAR1g [W/Kg]	0.695	0.697
psSAR10g [W/Kg]	0.351	0.343
Power Drift [dB]	-0.05	0.15



Measurement Report for WLAN 5GHz, BACK, H4+Cloth+B0, Antenna 2

Exposure Conditions

Band	WLAN 5GHz	TSL Permittivity	34.7
Frequency [MHz] Channel Number	5180.0 36	TSL Conductivity [S/m]	4.48
Group UID	WLAN 10317-AAD	Phantom Section TSL	Flat HSL
Conversion Factor	5.9	Test Distance [mm]	0.00
Communication Configuration	IEEE 802.11a WiFi 5 GHz (OFDM, 6 Mbps, 96pc duty cycle)		

Hardware Setup

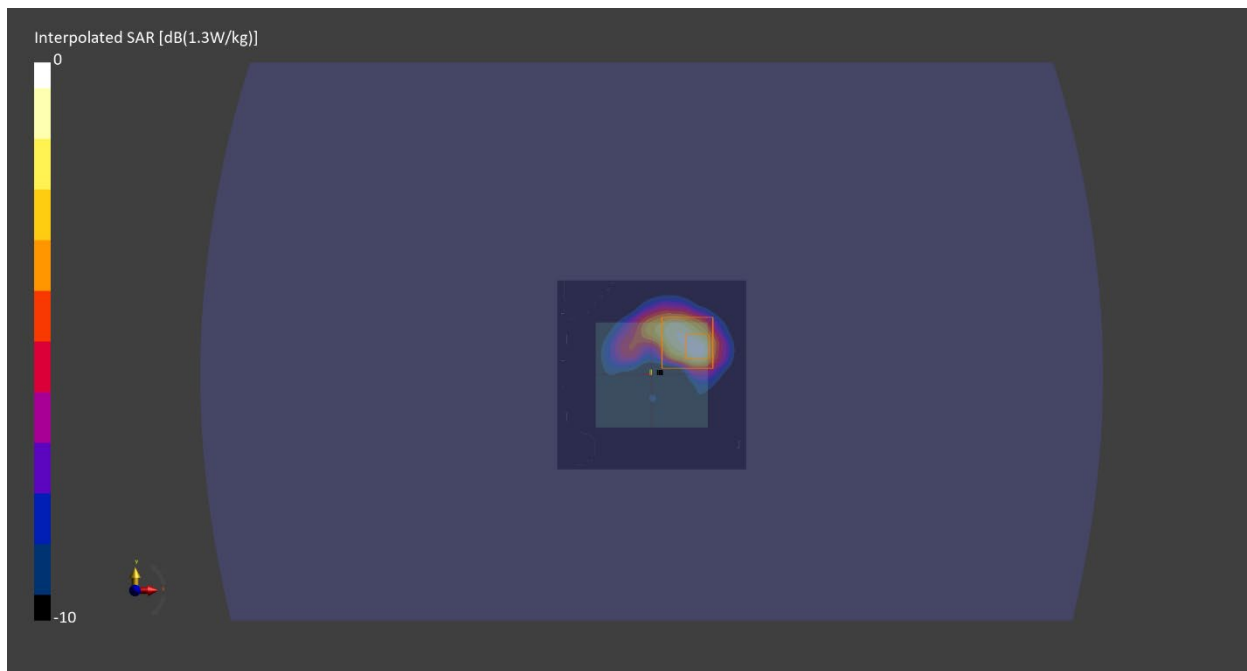
Probe Calibration Date	EX3DV4 - SN7709 2022-12-12	Phantom	ELI V5.0 (20deg probe tilt) - SN1196
DAE Calibration Date	DAE4 Sn1714 2022-11-23	TSL Meas. Date	HBBL-600-10000 2023-May-18

Scans Setup

	Area Scan	Zoom Scan
Grid Extents [mm]	80.0 x 80.0	22.0 x 22.0 x 22.0
Grid Steps [mm]	10.0 x 10.0	4.0 x 4.0 x 1.4
Sensor Surface [mm]	3.0	1.4
Graded Grid	n/a	Yes
M2/M1 [%]		61.5
Dist 3dB Peak [mm]		6.8

Measurement Results

	Area Scan	Zoom Scan
psSAR1g [W/Kg]	0.873	0.948
psSAR10g [W/Kg]	0.304	0.316
Power Drift [dB]	-1.77	-0.90



Measurement Report for WLAN 5GHz, BACK, H4+Cloth+B0, Antenna 2

Exposure Conditions

Band	WLAN 5GHz	TSL Permittivity	35.0
Frequency [MHz] Channel Number	5320.0 64	TSL Conductivity [S/m]	4.62
Group UID	WLAN 10317-AAD	Phantom Section TSL	Flat HSL
Conversion Factor	6.2	Test Distance [mm]	0.00
Communication Configuration	IEEE 802.11a WiFi 5 GHz (OFDM, 6 Mbps, 96pc duty cycle)		

Hardware Setup

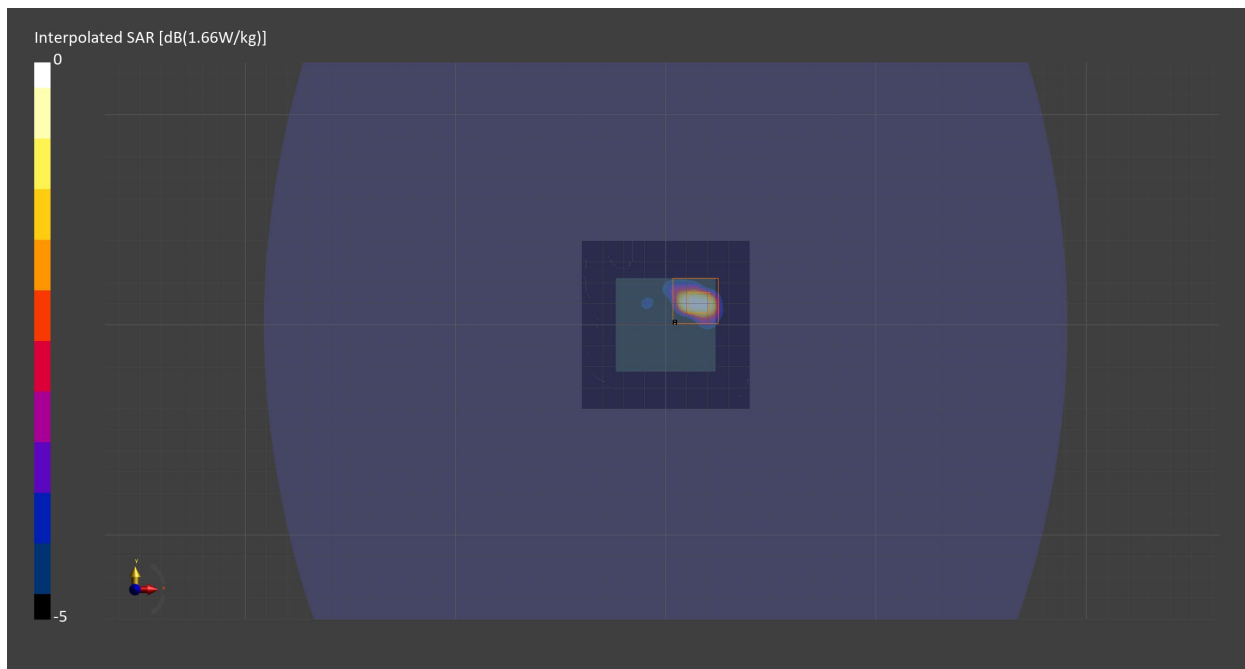
Probe Calibration Date	EX3DV4 - SN7710 2023-02-03	Phantom	ELI V8.0 (20deg probe tilt) - SN2081
DAE Calibration Date	DAE4 Sn1715 2023-01-23	TSL Meas. Date	HBBL-600-10000 2023-May-15

Scans Setup

	Area Scan	Zoom Scan
Grid Extents [mm]	80.0 x 80.0	22.0 x 22.0 x 22.0
Grid Steps [mm]	10.0 x 10.0	4.0 x 4.0 x 1.4
Sensor Surface [mm]	3.0	1.4
Graded Grid	n/a	Yes
M2/M1 [%]		59.7
Dist 3dB Peak [mm]		5.9

Measurement Results

	Area Scan	Zoom Scan
psSAR1g [W/Kg]	1.16	1.27
psSAR10g [W/Kg]	0.364	0.401
Power Drift [dB]	0.88	-3.60



Measurement Report for WLAN 5GHz, BACK, H4+Cloth+B0, Antenna 2

Exposure Conditions

Band	WLAN 5GHz	TSL Permittivity	34.9
Frequency [MHz] Channel Number	5500.0 100	TSL Conductivity [S/m]	4.83
Group UID	WLAN 10317-AAD	Phantom Section TSL	Flat HSL
Conversion Factor	5.58	Test Distance [mm]	0.00
Communication Configuration	IEEE 802.11a WiFi 5 GHz (OFDM, 6 Mbps, 96pc duty cycle)		

Hardware Setup

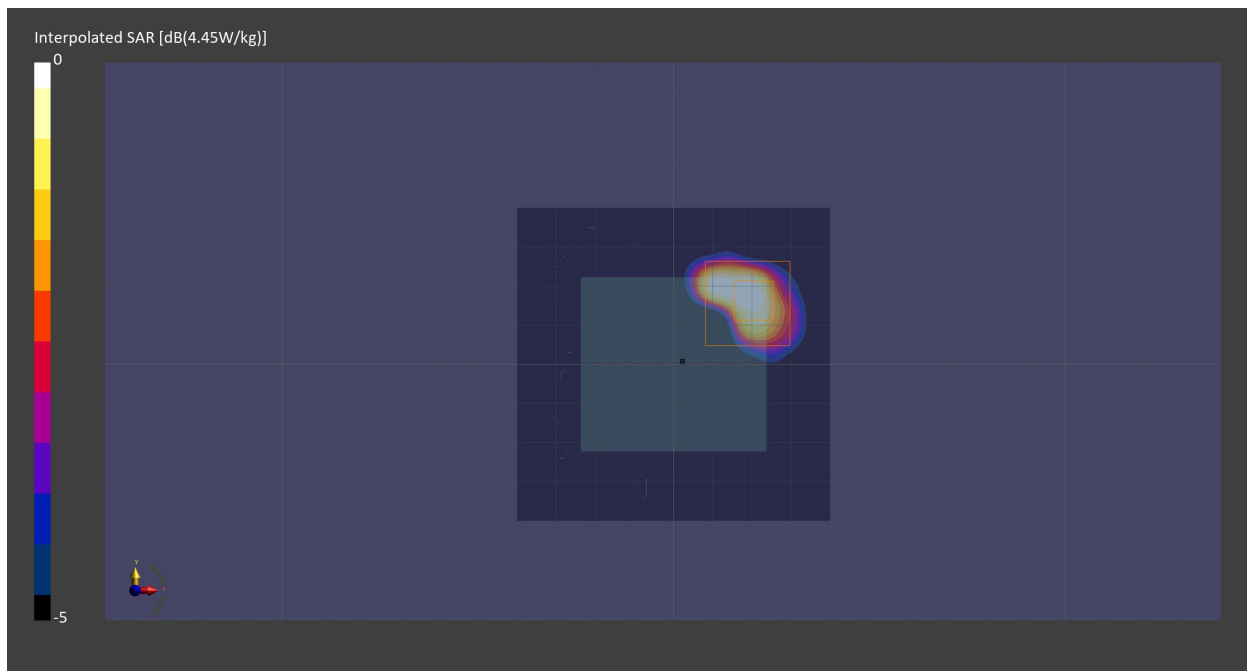
Probe Calibration Date	EX3DV4 - SN7711 2023-03-29	Phantom	ELI V8.0 (20deg probe tilt) - SN2160
DAE Calibration Date	DAE4 Sn1716 2023-03-16	TSL Meas. Date	HBBL-600-10000 2023-May-16

Scans Setup

	Area Scan	Zoom Scan
Grid Extents [mm]	80.0 x 80.0	22.0 x 22.0 x 22.0
Grid Steps [mm]	10.0 x 10.0	4.0 x 4.0 x 1.4
Sensor Surface [mm]	3.0	1.4
Graded Grid	n/a	Yes
M2/M1 [%]		61.1
Dist 3dB Peak [mm]		6.3

Measurement Results

	Area Scan	Zoom Scan
psSAR1g [W/Kg]	0.967	1.06
psSAR10g [W/Kg]	0.330	0.335
Power Drift [dB]	-0.36	-0.13



Measurement Report for WLAN 5GHz, BACK, H4+Cloth+B0, Antenna 2

Exposure Conditions

Band	WLAN 5GHz	TSL Permittivity	34.4
Frequency [MHz] Channel Number	5745.0 149	TSL Conductivity [S/m]	5.12
Group UID	WLAN 10317-AAD	Phantom Section TSL	Flat HSL
Conversion Factor	5.28	Test Distance [mm]	0.00
Communication Configuration	IEEE 802.11a WiFi 5 GHz (OFDM, 6 Mbps, 96pc duty cycle)		

Hardware Setup

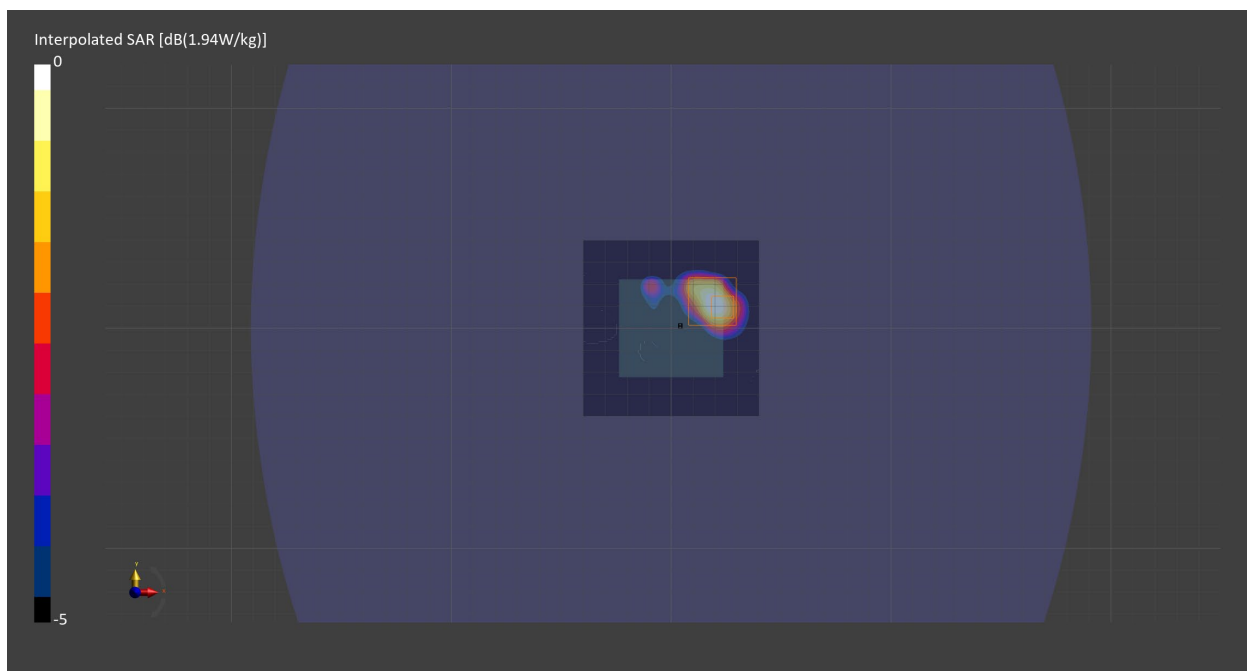
Probe Calibration Date	EX3DV4 - SN7711 2023-03-29	Phantom	ELI V8.0 (20deg probe tilt) - SN2160
DAE Calibration Date	DAE4 Sn1716 2023-03-16	TSL Meas. Date	HBBL-600-10000 2023-May-16

Scans Setup

	Area Scan	Zoom Scan
Grid Extents [mm]	80.0 x 80.0	22.0 x 22.0 x 22.0
Grid Steps [mm]	10.0 x 10.0	4.0 x 4.0 x 1.4
Sensor Surface [mm]	3.0	1.4
Graded Grid	n/a	Yes
M2/M1 [%]		64.7
Dist 3dB Peak [mm]		7.9

Measurement Results

	Area Scan	Zoom Scan
psSAR1g [W/Kg]	0.440	0.476
psSAR10g [W/Kg]	0.164	0.161
Power Drift [dB]	-0.43	0.77



Measurement Report for ISM 2.4 GHz Band, BACK, H4+Cloth+B0, Antenna 2

Exposure Conditions

Band	ISM 2.4 GHz Band	TSL Permittivity	38.2
Frequency [MHz] Channel Number	2440.0 38	TSL Conductivity [S/m]	1.81
Group UID	Bluetooth 10670-AAA	Phantom Section TSL	Flat HSL
Conversion Factor	7.97	Test Distance [mm]	0.00
Communication Configuration	Bluetooth Low Energy		

Hardware Setup

Probe Calibration Date	EX3DV4 - SN7711 2023-03-29	Phantom	ELI V8.0 (20deg probe tilt) - SN2160
DAE Calibration Date	DAE4 Sn1716 2023-03-16	TSL Meas. Date	HBBL-600-10000 2023-May-22

Scans Setup

	Area Scan	Zoom Scan
Grid Extents [mm]	80.0 x 80.0	30.0 x 30.0 x 30.0
Grid Steps [mm]	10.0 x 10.0	5.0 x 5.0 x 1.5
Sensor Surface [mm]	3.0	1.4
Graded Grid	n/a	Yes
M2/M1 [%]		69.5
Dist 3dB Peak [mm]		7.7

Measurement Results

	Area Scan	Zoom Scan
psSAR1g [W/Kg]	0.095	0.086
psSAR10g [W/Kg]	0.048	0.045
Power Drift [dB]	0.07	-0.11

