

2023-05-10 System Performance Check Report D2450V2 - SN963

Summary

Dipole	D2450V2 - SN963		
Frequency [MHz]	2450.0		
Phantom Section TSL	Flat HSL	Dev. Peak [%]	11.9
Power [dBm]	17.0	Iso. Error [%]	0.5

Exposure Conditions

Dipole Distance [mm]	10	TSL Permittivity	40.2
Conversion Factor	8.05	TSL Conductivity [S/m]	1.87

Hardware Setup

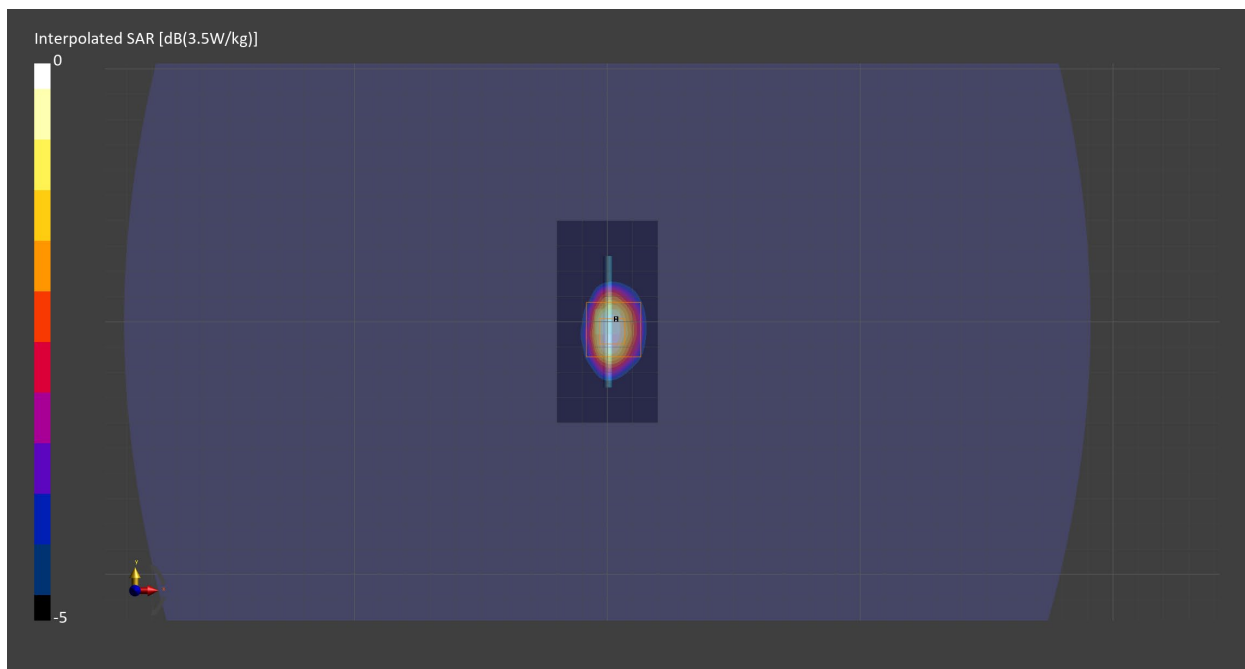
Probe Calibration Date	EX3DV4 - SN7710 2023-02-03	Phantom	ELI V8.0 (20deg probe tilt) - SN2081
DAE Calibration Date	DAE4 Sn1715 2023-01-23	TSL Meas. Date	HBBL-600-10000 2023-May-10

Scans Setup

	Area Scan	Zoom Scan
Grid Extents [mm]	40.0 x 80.0	30.0 x 30.0 x 30.0
Grid Steps [mm]	10.0 x 10.0	5.0 x 5.0 x 1.5
Sensor Surface [mm]	3.0	1.4
Graded Grid	n/a	Yes
M2/M1 [%]		79.3
Dist 3dB Peak [mm]		9.0

Measurement Results

	Area Scan	Zoom Scan
psSAR1g [W/Kg]	2.73	2.82
psSAR10g [W/Kg]	1.29	1.32
Power Drift [dB]	-0.00	0.03



2023-05-15 System Performance Check Report D5GHzV2 - SN1213

Summary

Dipole	D5GHzV2 - SN1213		
Frequency [MHz]	5250.0		
Phantom Section TSL	Flat HSL	Dev. Peak [%]	3.8
Power [dBm]	17.0	Iso. Error [%]	1.6

Exposure Conditions

Dipole Distance [mm]	10	TSL Permittivity	35.1
Conversion Factor	6.2	TSL Conductivity [S/m]	4.54

Hardware Setup

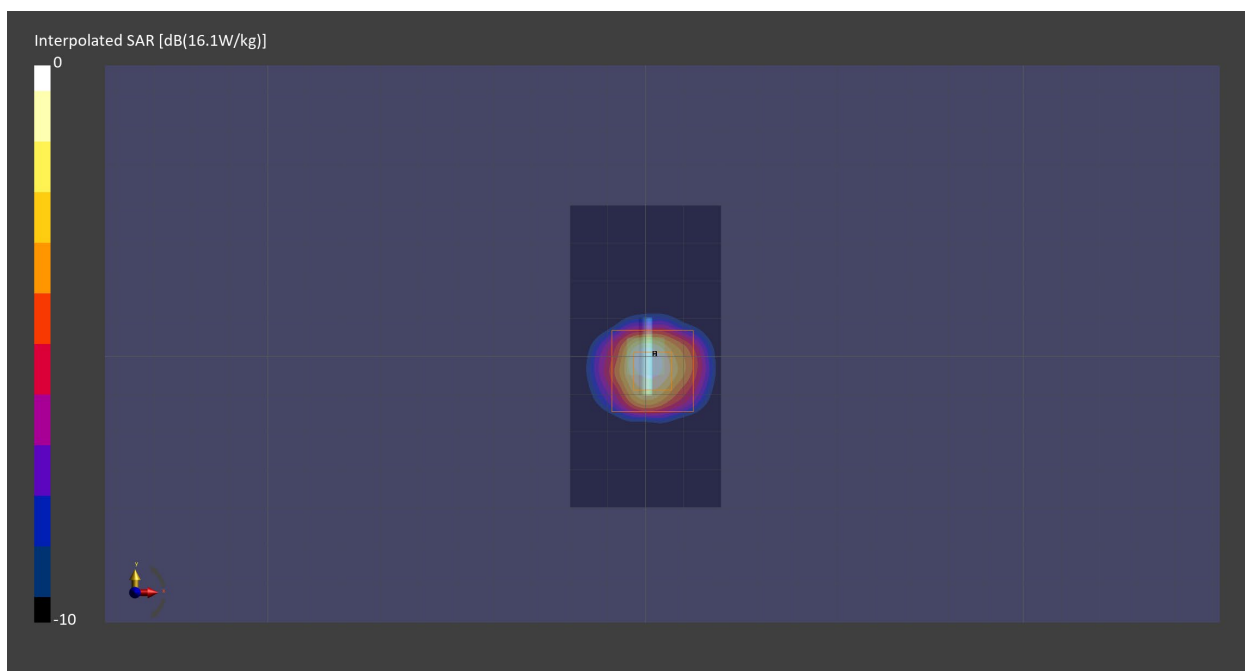
Probe Calibration Date	EX3DV4 - SN7710 2023-02-03	Phantom	ELI V8.0 (20deg probe tilt) - SN2081
DAE Calibration Date	DAE4 Sn1715 2023-01-23	TSL Meas. Date	HBBL-600-10000 2023-May-15

Scans Setup

	Area Scan	Zoom Scan
Grid Extents [mm]	40.0 x 80.0	22.0 x 22.0 x 22.0
Grid Steps [mm]	10.0 x 10.0	4.0 x 4.0 x 1.4
Sensor Surface [mm]	3.0	1.4
Graded Grid	n/a	Yes
M2/M1 [%]		63.7
Dist 3dB Peak [mm]		7.6

Measurement Results

	Area Scan	Zoom Scan
psSAR1g [W/Kg]	3.57	4.12
psSAR10g [W/Kg]	1.08	1.18
Power Drift [dB]	-0.03	-0.00



2023-05-30 System Performance Check Report D2600V2 - SN1104

Summary

Dipole	D2600V2 - SN1104		
Frequency [MHz]	2600.0		
Phantom Section TSL	Flat HSL	Dev. Peak [%]	-4.2
Power [dBm]	17.0	Iso. Error [%]	1.3

Exposure Conditions

Dipole Distance [mm]	10	TSL Permittivity	39.4
Conversion Factor	7.97	TSL Conductivity [S/m]	1.95

Hardware Setup

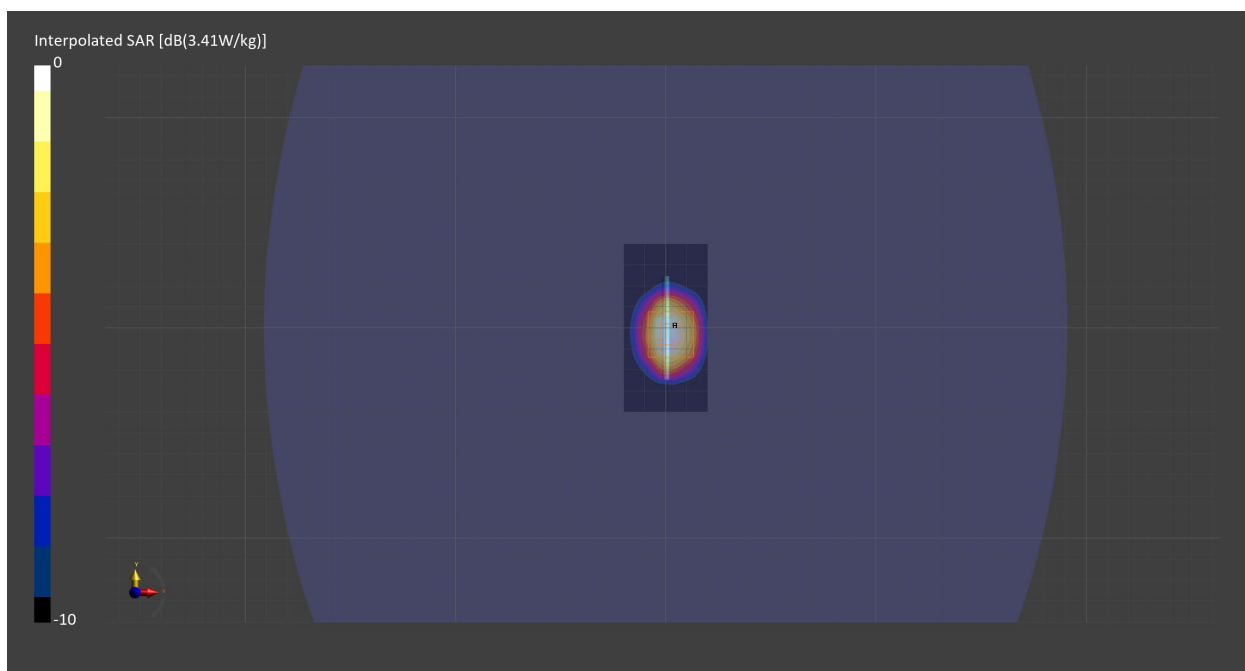
Probe Calibration Date	EX3DV4 - SN7710 2023-02-03	Phantom	ELI V8.0 (20deg probe tilt) - SN2081
DAE Calibration Date	DAE4 Sn1716 2023-03-16	TSL Meas. Date	HBBL600-10000V6 2023-May-30

Scans Setup

	Area Scan	Zoom Scan
Grid Extents [mm]	40.0 x 80.0	30.0 x 30.0 x 30.0
Grid Steps [mm]	10.0 x 10.0	5.0 x 5.0 x 1.5
Sensor Surface [mm]	3.0	1.4
Graded Grid	n/a	Yes
M2/M1 [%]		78.9
Dist 3dB Peak [mm]		9.0

Measurement Results

	Area Scan	Zoom Scan
psSAR1g [W/Kg]	2.61	2.68
psSAR10g [W/Kg]	1.19	1.21
Power Drift [dB]	-0.01	0.01



2023-06-05 System Performance Check Report D1900V2 - SN5d202

Summary

Dipole	D1900V2 - SN5d202		
Frequency [MHz]	1900.0		
Phantom Section TSL	Flat HSL	Dev. Peak [%]	-0.1
Power [dBm]	17.0	Iso. Error [%]	0.8

Exposure Conditions

Dipole Distance [mm]	10	TSL Permittivity	39.0
Conversion Factor	8.75	TSL Conductivity [S/m]	1.45

Hardware Setup

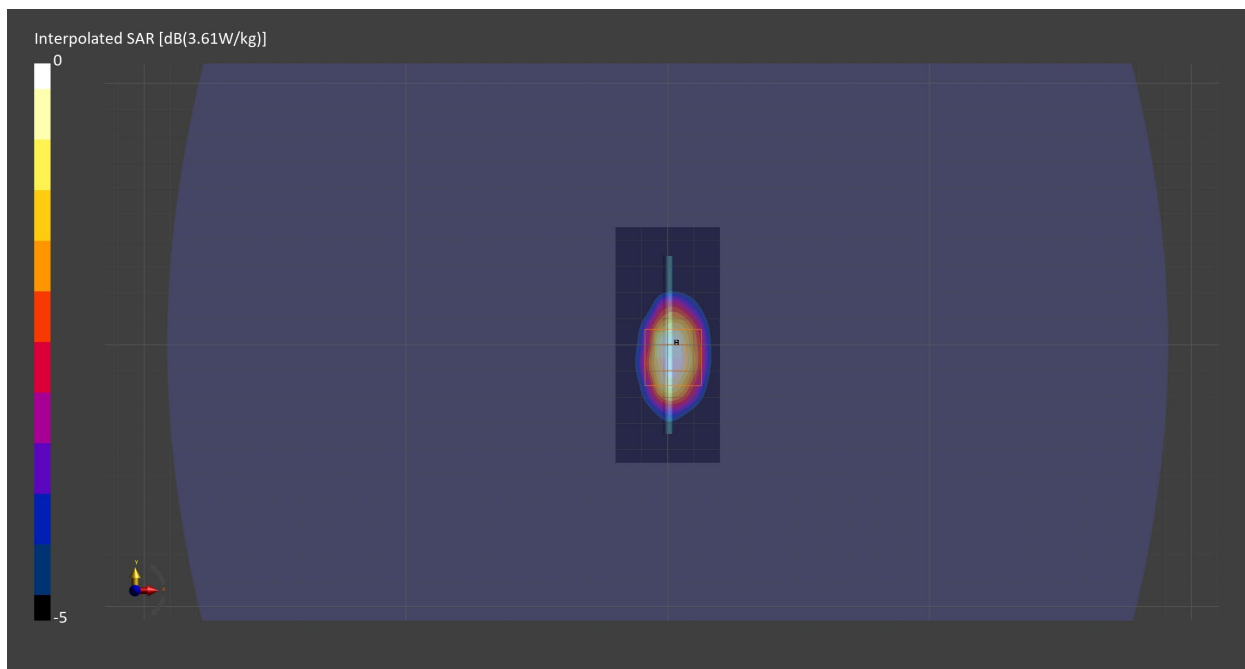
Probe Calibration Date	EX3DV4 - SN7710 2023-02-03	Phantom	ELI V8.0 (20deg probe tilt) - SN2081
DAE Calibration Date	DAE4 Sn1715 2023-01-23	TSL Meas. Date	HBBL600-10000V6 2023-Jun-05

Scans Setup

	Area Scan	Zoom Scan
Grid Extents [mm]	40.0 x 90.0	30.0 x 30.0 x 30.0
Grid Steps [mm]	10.0 x 15.0	6.0 x 6.0 x 1.5
Sensor Surface [mm]	3.0	1.4
Graded Grid	n/a	Yes
M2/M1 [%]		82.2
Dist 3dB Peak [mm]		9.6

Measurement Results

	Area Scan	Zoom Scan
psSAR1g [W/Kg]	1.91	1.93
psSAR10g [W/Kg]	1.01	1.01
Power Drift [dB]	n/a	-0.04



2023-07-10 System Performance Check Report D750V3 - SN1139

Summary

Dipole	D750V3 - SN1139		
Frequency [MHz]	750.0		
Phantom Section TSL	Flat HSL	Dev. Peak [%]	7.1
Power [dBm]	17.0	Iso. Error [%]	0.7

Exposure Conditions

Dipole Distance [mm]	15	TSL Permittivity	41.1
Conversion Factor	10.65	TSL Conductivity [S/m]	0.918

Hardware Setup

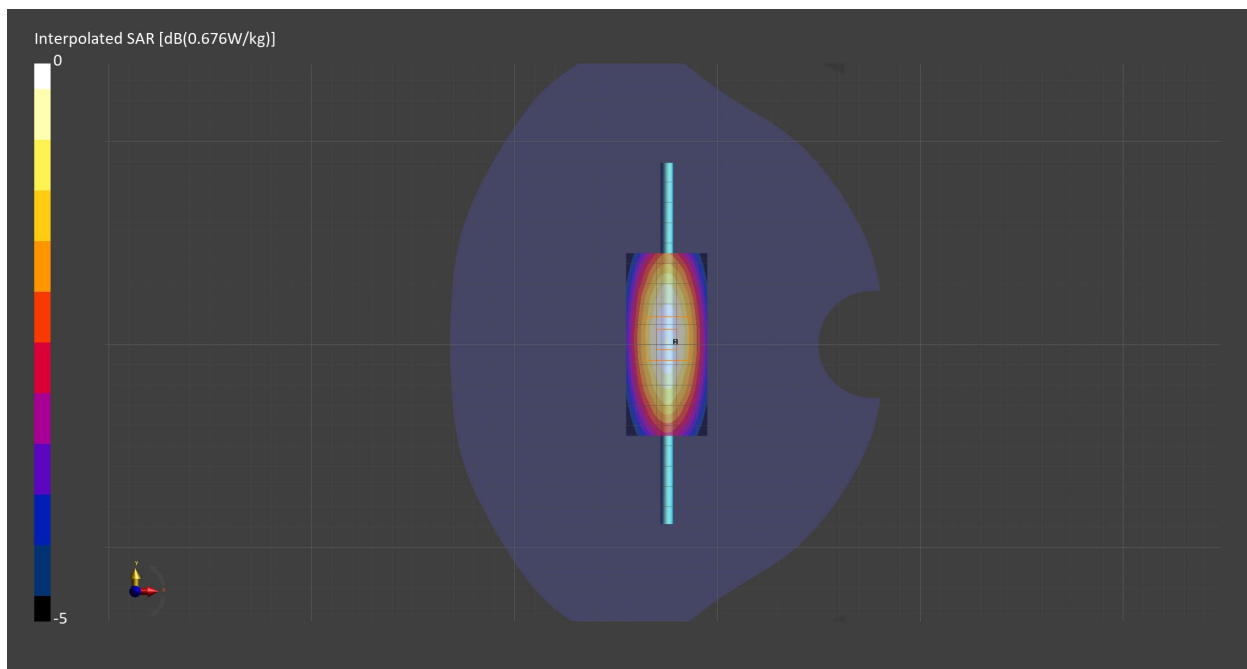
Probe Calibration Date	EX3DV4 - SN7710 2023-02-03	Phantom	Twin-SAM V8.0 (30deg probe tilt) - SN2084
DAE Calibration Date	DAE4 Sn1715 2023-01-23	TSL Meas. Date	HBBL600-10000V6 2023-Jul-10

Scans Setup

	Area Scan	Zoom Scan
Grid Extents [mm]	40.0 x 90.0	30.0 x 30.0 x 30.0
Grid Steps [mm]	10.0 x 15.0	6.0 x 6.0 x 1.5
Sensor Surface [mm]	3.0	1.4
Graded Grid	n/a	Yes
M2/M1 [%]		85.9
Dist 3dB Peak [mm]		> 15.0

Measurement Results

	Area Scan	Zoom Scan
psSAR1g [W/Kg]	0.429	0.430
psSAR10g [W/Kg]	0.285	0.281
Power Drift [dB]	n/a	0.02



2023-05-16 System Performance Check Report D5GHzV2 - SN1213

Summary

Dipole	D5GHzV2 - SN1213		
Frequency [MHz]	5600.0		
Phantom Section TSL	Flat HSL	Dev. Peak [%]	2.5
Power [dBm]	17.0	Iso. Error [%]	2.1

Exposure Conditions

Dipole Distance [mm]	10	TSL Permittivity	34.7
Conversion Factor	5.15	TSL Conductivity [S/m]	4.95

Hardware Setup

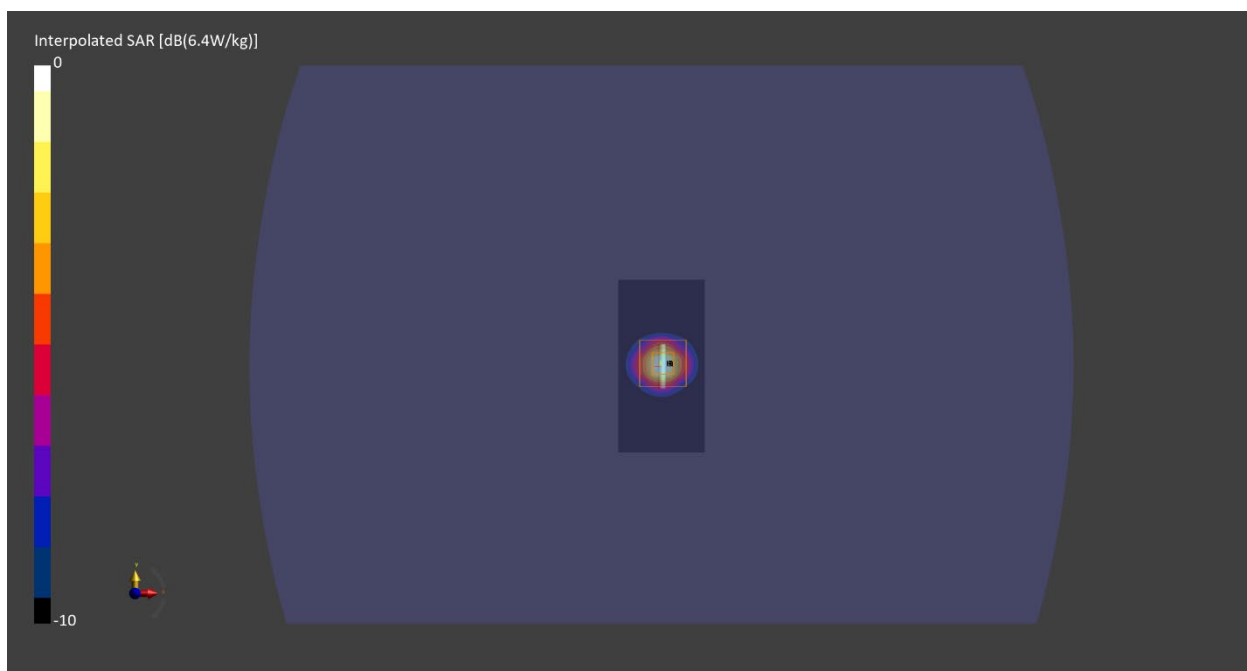
Probe Calibration Date	EX3DV4 - SN7711 2023-03-29	Phantom	ELI V8.0 (20deg probe tilt) - SN2160
DAE Calibration Date	DAE4 Sn1716 2023-03-16	TSL Meas. Date	HBBL-600-10000 2023-May-16

Scans Setup

	Area Scan	Zoom Scan
Grid Extents [mm]	40.0 x 80.0	22.0 x 22.0 x 22.0
Grid Steps [mm]	10.0 x 10.0	4.0 x 4.0 x 1.4
Sensor Surface [mm]	3.0	1.4
Graded Grid	n/a	Yes
M2/M1 [%]		61.6
Dist 3dB Peak [mm]		7.2

Measurement Results

	Area Scan	Zoom Scan
psSAR1g [W/Kg]	3.97	4.12
psSAR10g [W/Kg]	1.11	1.17
Power Drift [dB]	-0.05	-0.06



2023-05-16 System Performance Check Report D5GHzV2 - SN1213

Summary

Dipole	D5GHzV2 - SN1213		
Frequency [MHz]	5750.0		
Phantom Section TSL	Flat HSL	Dev. Peak [%]	-4.7
Power [dBm]	17.0	Iso. Error [%]	4.1

Exposure Conditions

Dipole Distance [mm]	10	TSL Permittivity	34.4
Conversion Factor	5.28	TSL Conductivity [S/m]	5.13

Hardware Setup

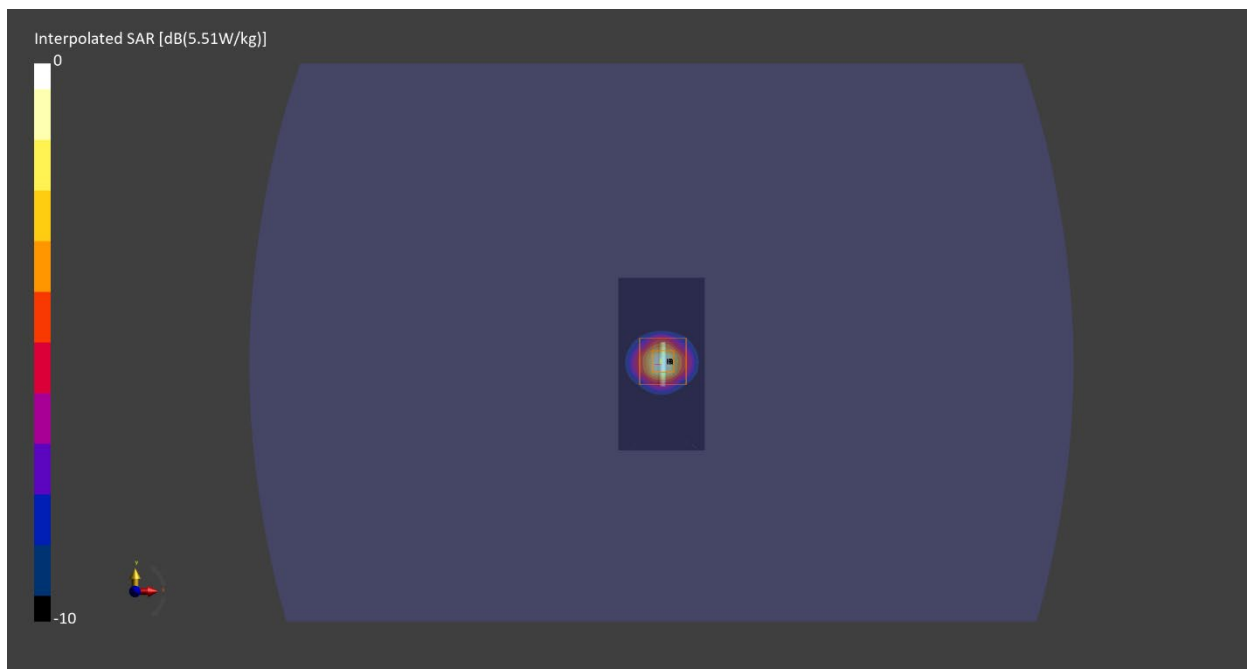
Probe Calibration Date	EX3DV4 - SN7711 2023-03-29	Phantom	ELI V8.0 (20deg probe tilt) - SN2160
DAE Calibration Date	DAE4 Sn1716 2023-03-16	TSL Meas. Date	HBBL-600-10000 2023-May-16

Scans Setup

	Area Scan	Zoom Scan
Grid Extents [mm]	40.0 x 80.0	22.0 x 22.0 x 22.0
Grid Steps [mm]	10.0 x 10.0	4.0 x 4.0 x 1.4
Sensor Surface [mm]	3.0	1.4
Graded Grid	n/a	Yes
M2/M1 [%]		60.0
Dist 3dB Peak [mm]		7.2

Measurement Results

	Area Scan	Zoom Scan
psSAR1g [W/Kg]	3.44	3.60
psSAR10g [W/Kg]	0.958	1.02
Power Drift [dB]	-0.03	-0.03



2023-05-16 System Performance Check Report D5GHzV2 - SN1213

Summary

Dipole	D5GHzV2 - SN1213		
Frequency [MHz]	5850.0		
Phantom Section TSL	Flat HSL	Dev. Peak [%]	-2.2
Power [dBm]	17.0	Iso. Error [%]	4.5

Exposure Conditions

Dipole Distance [mm]	10	TSL Permittivity	34.3
Conversion Factor	5.28	TSL Conductivity [S/m]	5.24

Hardware Setup

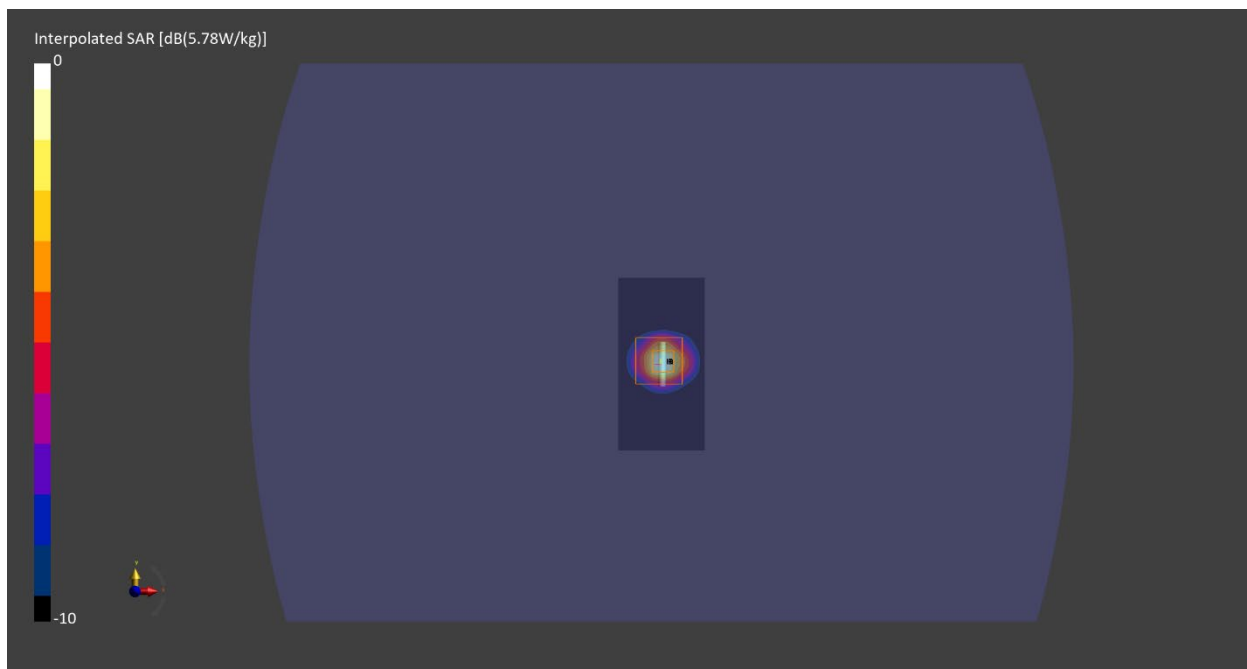
Probe Calibration Date	EX3DV4 - SN7711 2023-03-29	Phantom	ELI V8.0 (20deg probe tilt) - SN2160
DAE Calibration Date	DAE4 Sn1716 2023-03-16	TSL Meas. Date	HBBL-600-10000 2023-May-16

Scans Setup

	Area Scan	Zoom Scan
Grid Extents [mm]	40.0 x 80.0	22.0 x 22.0 x 22.0
Grid Steps [mm]	10.0 x 10.0	4.0 x 4.0 x 1.4
Sensor Surface [mm]	3.0	1.4
Graded Grid	n/a	Yes
M2/M1 [%]		59.8
Dist 3dB Peak [mm]		7.4

Measurement Results

	Area Scan	Zoom Scan
psSAR1g [W/Kg]	3.69	3.86
psSAR10g [W/Kg]	1.03	1.08
Power Drift [dB]	0.00	-0.00



2023-05-22 System Performance Check Report D2450V2 - SN963

Summary

Dipole	D2450V2 - SN963		
Frequency [MHz]	2450.0		
Phantom Section TSL	Flat HSL	Dev. Peak [%]	4.1
Power [dBm]	17.0	Iso. Error [%]	-0.7

Exposure Conditions

Dipole Distance [mm]	10	TSL Permittivity	38.2
Conversion Factor	7.97	TSL Conductivity [S/m]	1.81

Hardware Setup

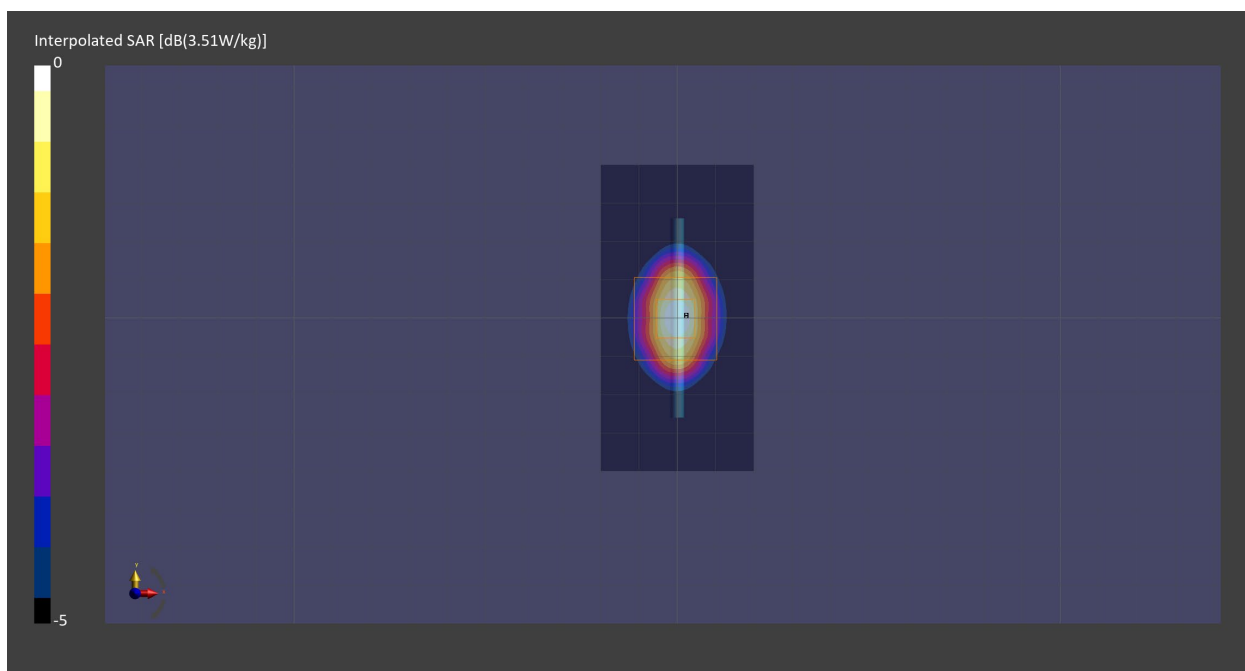
Probe Calibration Date	EX3DV4 - SN7711 2023-03-29	Phantom	ELI V8.0 (20deg probe tilt) - SN2160
DAE Calibration Date	DAE4 Sn1716 2023-03-16	TSL Meas. Date	HBBL-600-10000 2023-May-22

Scans Setup

	Area Scan	Zoom Scan
Grid Extents [mm]	40.0 x 80.0	30.0 x 30.0 x 30.0
Grid Steps [mm]	10.0 x 10.0	5.0 x 5.0 x 1.5
Sensor Surface [mm]	3.0	1.4
Graded Grid	n/a	Yes
M2/M1 [%]		80.3
Dist 3dB Peak [mm]		9.0

Measurement Results

	Area Scan	Zoom Scan
psSAR1g [W/Kg]	2.64	2.62
psSAR10g [W/Kg]	1.22	1.22
Power Drift [dB]	-0.01	-0.01



2023-05-26 System Performance Check Report D1750V2 - SN1136

Summary

Dipole	D1750V2 - SN1136		
Frequency [MHz]	1750.0		
Phantom Section TSL	Flat HSL	Dev. Peak [%]	1.2
Power [dBm]	17.0	Iso. Error [%]	1.2

Exposure Conditions

Dipole Distance [mm]	10	TSL Permittivity	39.0
Conversion Factor	8.64	TSL Conductivity [S/m]	1.32

Hardware Setup

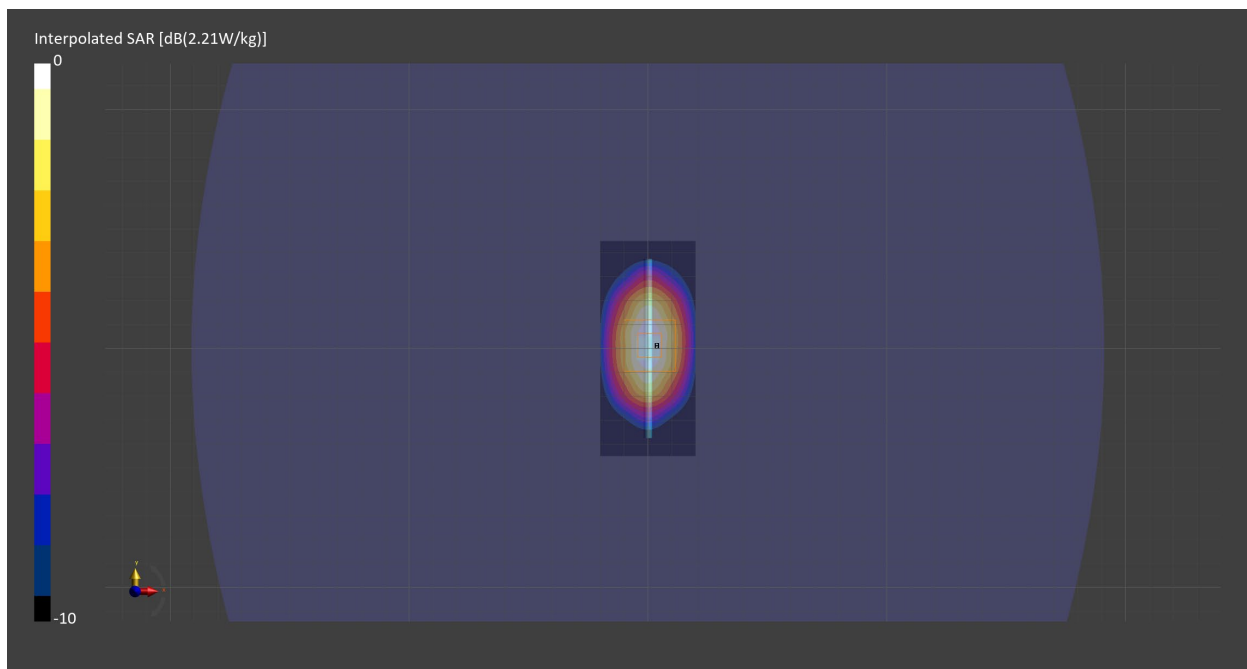
Probe Calibration Date	EX3DV4 - SN7711 2023-03-29	Phantom	ELI V8.0 (20deg probe tilt) - SN2160
DAE Calibration Date	DAE4 Sn1716 2023-03-16	TSL Meas. Date	HBBL-600-10000 2023-May-26

Scans Setup

	Area Scan	Zoom Scan
Grid Extents [mm]	40.0 x 90.0	30.0 x 30.0 x 30.0
Grid Steps [mm]	10.0 x 15.0	6.0 x 6.0 x 1.5
Sensor Surface [mm]	3.0	1.4
Graded Grid	n/a	Yes
M2/M1 [%]		82.1
Dist 3dB Peak [mm]		10.8

Measurement Results

	Area Scan	Zoom Scan
psSAR1g [W/Kg]	1.77	1.76
psSAR10g [W/Kg]	0.940	0.935
Power Drift [dB]	-0.02	-0.00



2023-06-05 System Performance Check Report D2600V2 - SN1104

Summary

Dipole	D2600V2 - SN1104		
Frequency [MHz]	2600.0		
Phantom Section TSL	Flat HSL	Dev. Peak [%]	-4.8
Power [dBm]	17.0	Iso. Error [%]	0.5

Exposure Conditions

Dipole Distance [mm]	10	TSL Permittivity	38.8
Conversion Factor	7.67	TSL Conductivity [S/m]	1.90

Hardware Setup

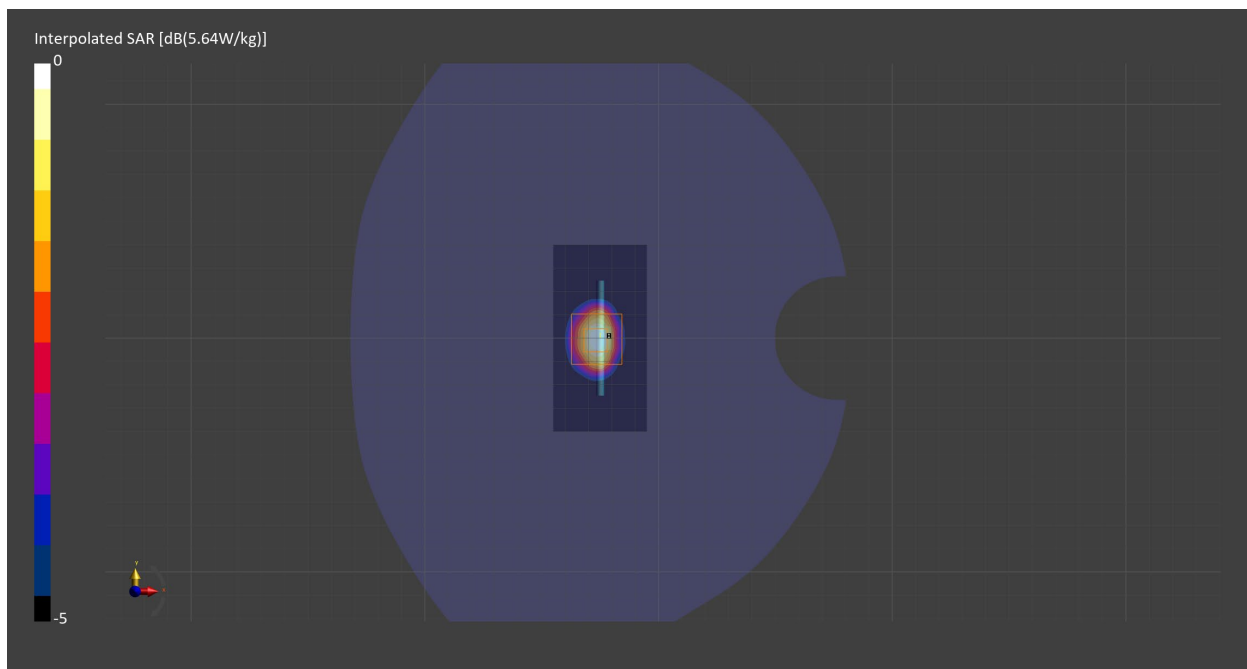
Probe Calibration Date	EX3DV4 - SN7711 2023-03-29	Phantom	Twin-SAM V8.0 (30deg probe tilt) - SN2082
DAE Calibration Date	DAE4 Sn1716 2023-03-16	TSL Meas. Date	HBBL-600-10000 2023-Jun-05

Scans Setup

	Area Scan	Zoom Scan
Grid Extents [mm]	40.0 x 80.0	30.0 x 30.0 x 30.0
Grid Steps [mm]	10.0 x 10.0	5.0 x 5.0 x 1.5
Sensor Surface [mm]	3.0	1.4
Graded Grid	n/a	Yes
M2/M1 [%]		79.3
Dist 3dB Peak [mm]		9.1

Measurement Results

	Area Scan	Zoom Scan
psSAR1g [W/Kg]	2.65	2.66
psSAR10g [W/Kg]	1.20	1.21
Power Drift [dB]	n/a	-0.00



2023-07-07 System Performance Check Report D1900V2 - SN5d202

Summary

Dipole	D1900V2 - SN5d202		
Frequency [MHz]	1900.0		
Phantom Section TSL	Flat HSL	Dev. Peak [%]	5.6
Power [dBm]	17.0	Iso. Error [%]	2.4

Exposure Conditions

Dipole Distance [mm]	10	TSL Permittivity	38.9
Conversion Factor	8.18	TSL Conductivity [S/m]	1.43

Hardware Setup

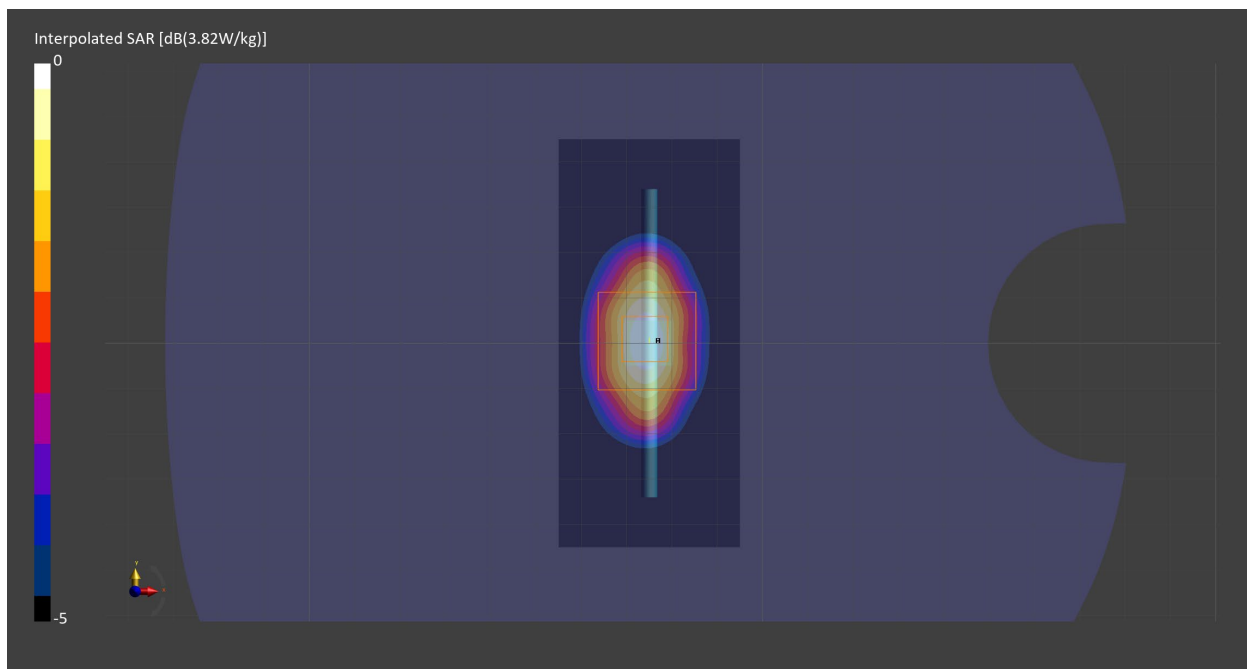
Probe Calibration Date	EX3DV4 - SN7711 2023-03-29	Phantom	Twin-SAM V8.0 (30deg probe tilt) - SN2082
DAE Calibration Date	DAE4 Sn1716 2023-03-16	TSL Meas. Date	HBBL-600-10000 2023-Jul-07

Scans Setup

	Area Scan	Zoom Scan
Grid Extents [mm]	40.0 x 90.0	30.0 x 30.0 x 30.0
Grid Steps [mm]	10.0 x 15.0	6.0 x 6.0 x 1.5
Sensor Surface [mm]	3.0	1.4
Graded Grid	n/a	Yes
M2/M1 [%]		82.4
Dist 3dB Peak [mm]		9.9

Measurement Results

	Area Scan	Zoom Scan
psSAR1g [W/Kg]	2.05	2.05
psSAR10g [W/Kg]	1.07	1.07
Power Drift [dB]	n/a	-0.00



2023-05-23 System Performance Check Report D5GHzV2 - SN1213

Summary

Dipole	D5GHzV2 - SN1213		
Frequency [MHz]	5250.0		
Phantom Section TSL	Flat HSL	Dev. Peak [%]	-8.7
Power [dBm]	17.0	Iso. Error [%]	1.5

Exposure Conditions

Dipole Distance [mm]	10	TSL Permittivity	36.0
Conversion Factor	5.9	TSL Conductivity [S/m]	4.67

Hardware Setup

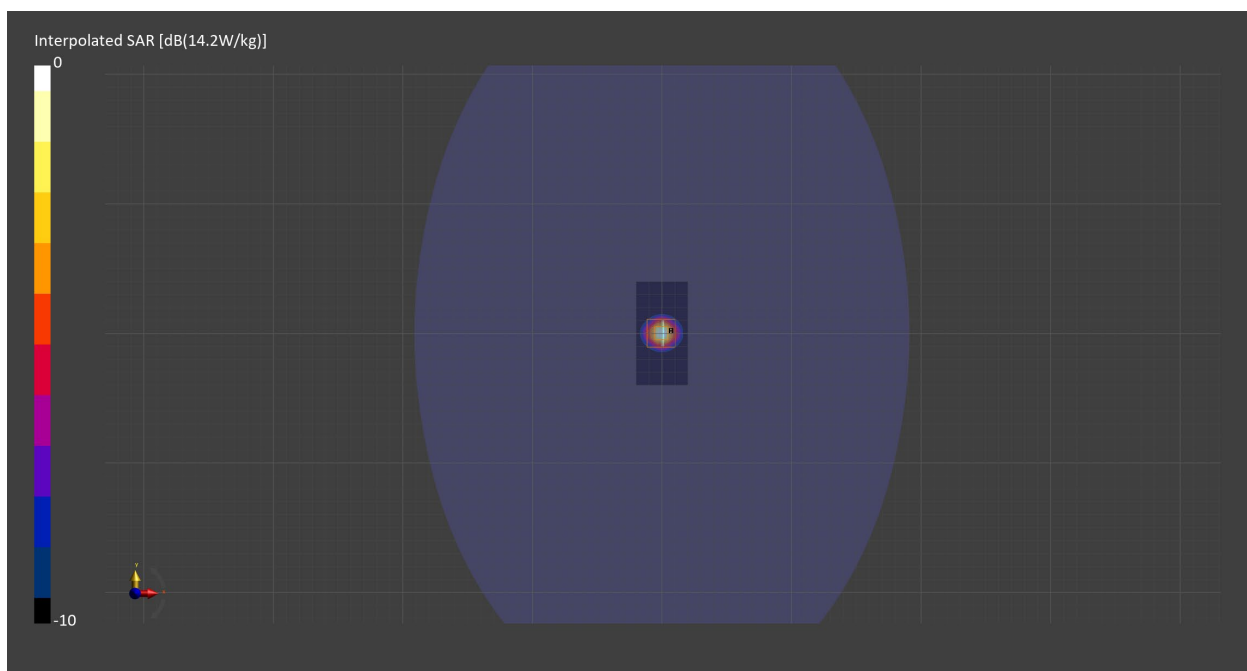
Probe Calibration Date	EX3DV4 - SN7709 2022-12-12	Phantom	ELI V5.0 (20deg probe tilt) - SN1196
DAE Calibration Date	DAE4 Sn1714 2022-11-23	TSL Meas. Date	HBBL-600-10000 2023-May-23

Scans Setup

	Area Scan	Zoom Scan
Grid Extents [mm]	40.0 x 80.0	22.0 x 22.0 x 22.0
Grid Steps [mm]	10.0 x 10.0	4.0 x 4.0 x 1.4
Sensor Surface [mm]	3.0	1.4
Graded Grid	n/a	Yes
M2/M1 [%]		65.5
Dist 3dB Peak [mm]		7.6

Measurement Results

	Area Scan	Zoom Scan
psSAR1g [W/Kg]	3.54	3.60
psSAR10g [W/Kg]	1.01	1.03
Power Drift [dB]	-0.01	-0.03



2023-05-23 System Performance Check Report D5GHzV2 - SN1213

Summary

Dipole	D5GHzV2 - SN1213		
Frequency [MHz]	5600.0		
Phantom Section TSL	Flat HSL	Dev. Peak [%]	2.1
Power [dBm]	17.0	Iso. Error [%]	2.0

Exposure Conditions

Dipole Distance [mm]	10	TSL Permittivity	35.4
Conversion Factor	5.09	TSL Conductivity [S/m]	5.08

Hardware Setup

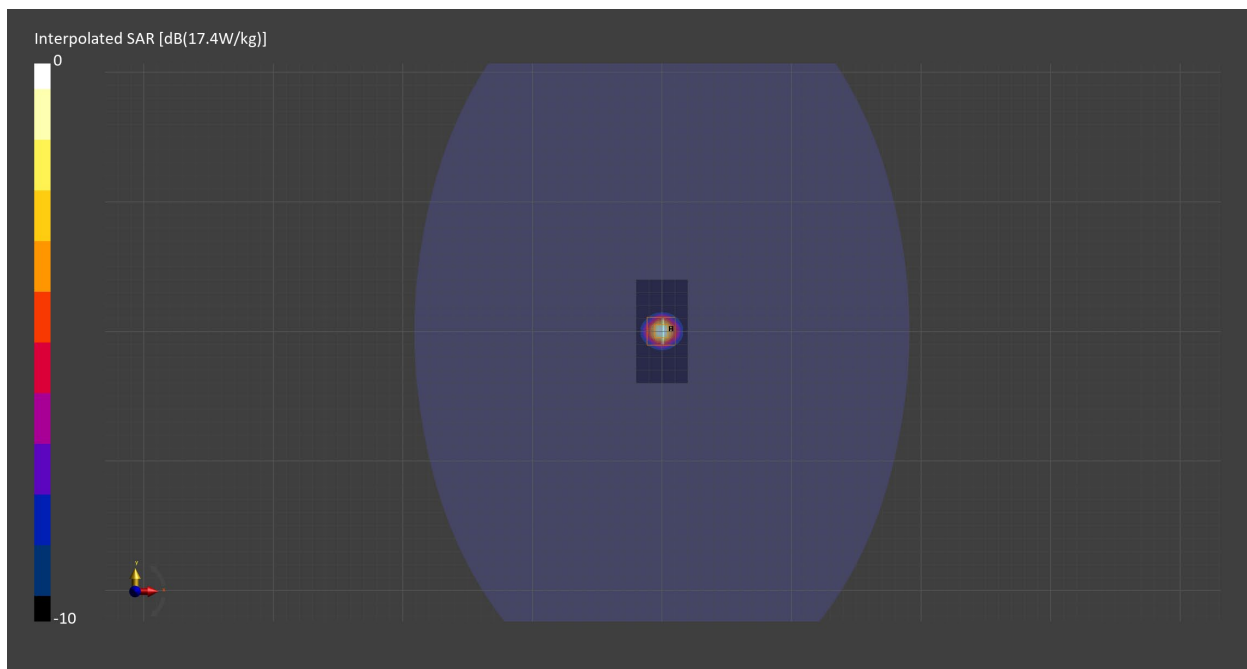
Probe Calibration Date	EX3DV4 - SN7709 2022-12-12	Phantom	ELI V5.0 (20deg probe tilt) - SN1196
DAE Calibration Date	DAE4 Sn1714 2022-11-23	TSL Meas. Date	HBBL-600-10000 2023-May-23

Scans Setup

	Area Scan	Zoom Scan
Grid Extents [mm]	40.0 x 80.0	22.0 x 22.0 x 22.0
Grid Steps [mm]	10.0 x 10.0	4.0 x 4.0 x 1.4
Sensor Surface [mm]	3.0	1.4
Graded Grid	n/a	Yes
M2/M1 [%]		62.3
Dist 3dB Peak [mm]		7.4

Measurement Results

	Area Scan	Zoom Scan
psSAR1g [W/Kg]	3.93	4.04
psSAR10g [W/Kg]	1.10	1.14
Power Drift [dB]	0.01	-0.00



2023-05-25 System Performance Check Report D5GHzV2 - SN1213

Summary

Dipole	D5GHzV2 - SN1213		
Frequency [MHz]	5750.0		
Phantom Section TSL	Flat HSL	Dev. Peak [%]	-1.9
Power [dBm]	17.0	Iso. Error [%]	2.1

Exposure Conditions

Dipole Distance [mm]	10	TSL Permittivity	35.1
Conversion Factor	5.4	TSL Conductivity [S/m]	5.28

Hardware Setup

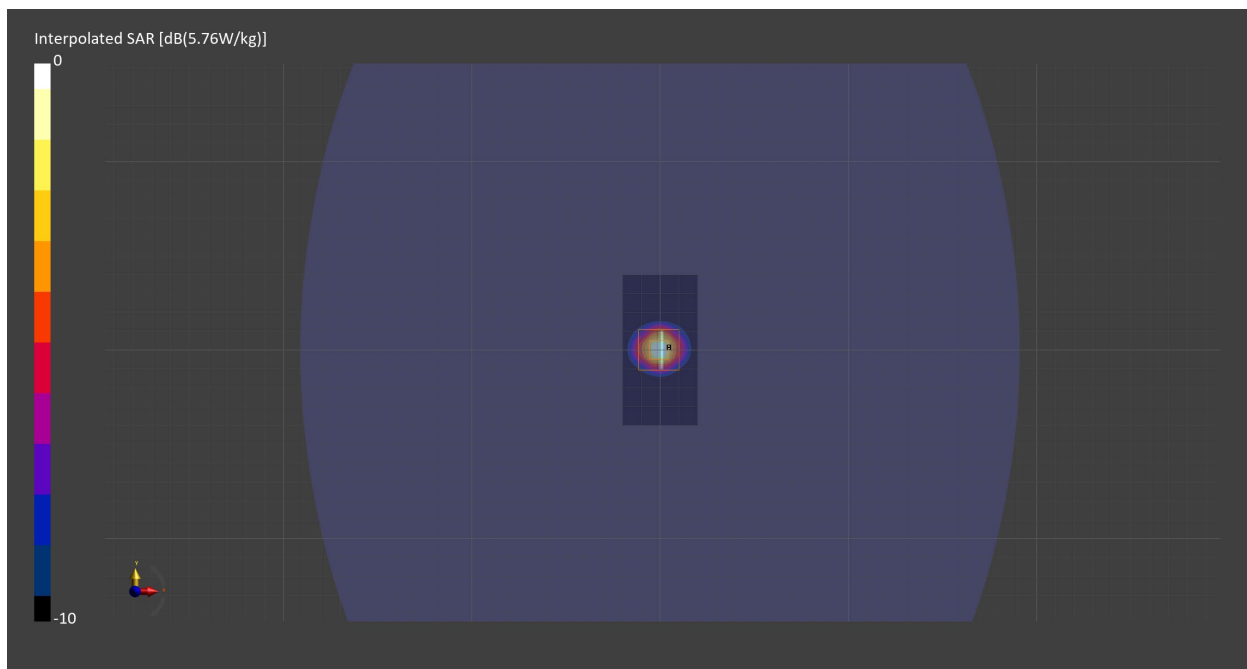
Probe Calibration Date	EX3DV4 - SN7709 2022-12-12	Phantom	ELI V5.0 (20deg probe tilt) - SN1196
DAE Calibration Date	DAE4 Sn1714 2022-11-23	TSL Meas. Date	HBBL-600-10000 2023-May-25

Scans Setup

	Area Scan	Zoom Scan
Grid Extents [mm]	40.0 x 80.0	22.0 x 22.0 x 22.0
Grid Steps [mm]	10.0 x 10.0	4.0 x 4.0 x 1.4
Sensor Surface [mm]	3.0	1.4
Graded Grid	n/a	Yes
M2/M1 [%]		60.4
Dist 3dB Peak [mm]		7.4

Measurement Results

	Area Scan	Zoom Scan
psSAR1g [W/Kg]	3.57	3.64
psSAR10g [W/Kg]	1.00	1.03
Power Drift [dB]	-0.00	0.01



2023-05-31 System Performance Check Report D1750V2 - SN1136

Summary

Dipole	D1750V2 - SN1136		
Frequency [MHz]	1750.0		
Phantom Section TSL	Flat HSL	Dev. Peak [%]	-0.3
Power [dBm]	17.0	Iso. Error [%]	2.2

Exposure Conditions

Dipole Distance [mm]	10	TSL Permittivity	40.5
Conversion Factor	9.05	TSL Conductivity [S/m]	1.39

Hardware Setup

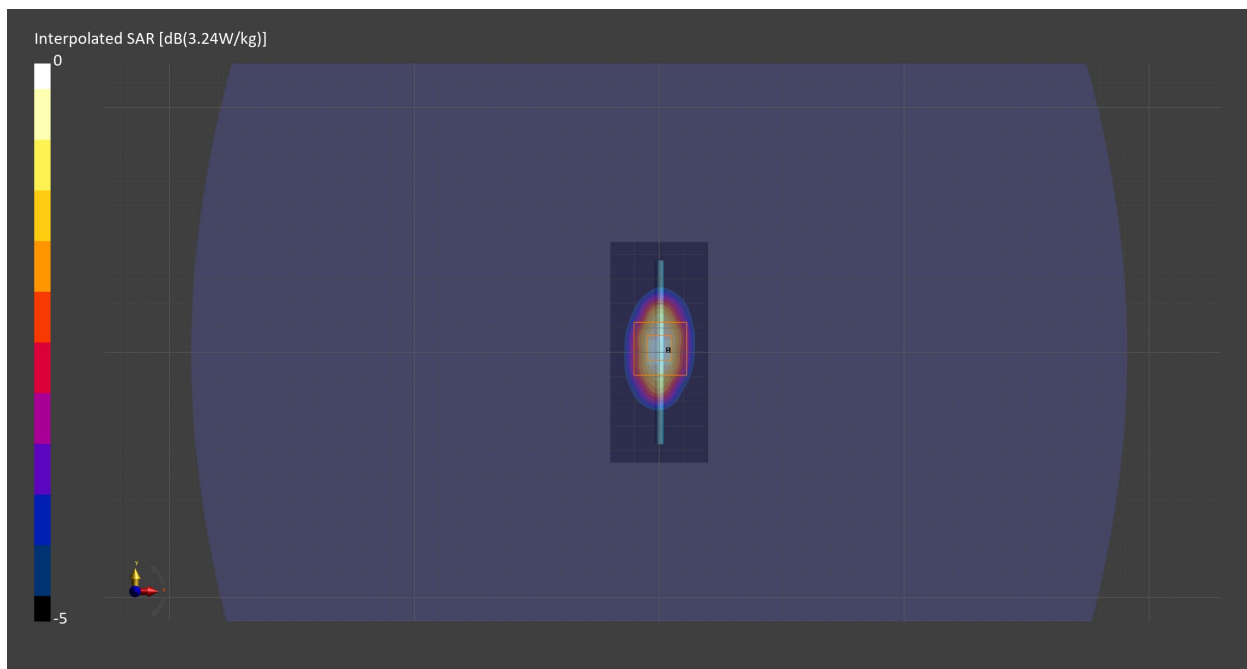
Probe Calibration Date	EX3DV4 - SN7709 2022-12-12	Phantom	ELI V5.0 (20deg probe tilt) - SN1196
DAE Calibration Date	DAE4 Sn1714 2022-11-23	TSL Meas. Date	HBBL-600-10000 2023-May-31

Scans Setup

	Area Scan	Zoom Scan
Grid Extents [mm]	40.0 x 90.0	30.0 x 30.0 x 30.0
Grid Steps [mm]	10.0 x 15.0	6.0 x 6.0 x 1.5
Sensor Surface [mm]	3.0	1.4
Graded Grid	n/a	Yes
M2/M1 [%]		82.5
Dist 3dB Peak [mm]		10.3

Measurement Results

	Area Scan	Zoom Scan
psSAR1g [W/Kg]	1.76	1.75
psSAR10g [W/Kg]	0.937	0.931
Power Drift [dB]	-0.00	0.02



2023-06-05 System Performance Check Report D750V3 - SN1139

Summary

Dipole	D750V3 - SN1139		
Frequency [MHz]	750.0		
Phantom Section TSL	Flat HSL	Dev. Peak [%]	2.0
Power [dBm]	17.0	Iso. Error [%]	1.7

Exposure Conditions

Dipole Distance [mm]	15	TSL Permittivity	43.2
Conversion Factor	10.56	TSL Conductivity [S/m]	0.919

Hardware Setup

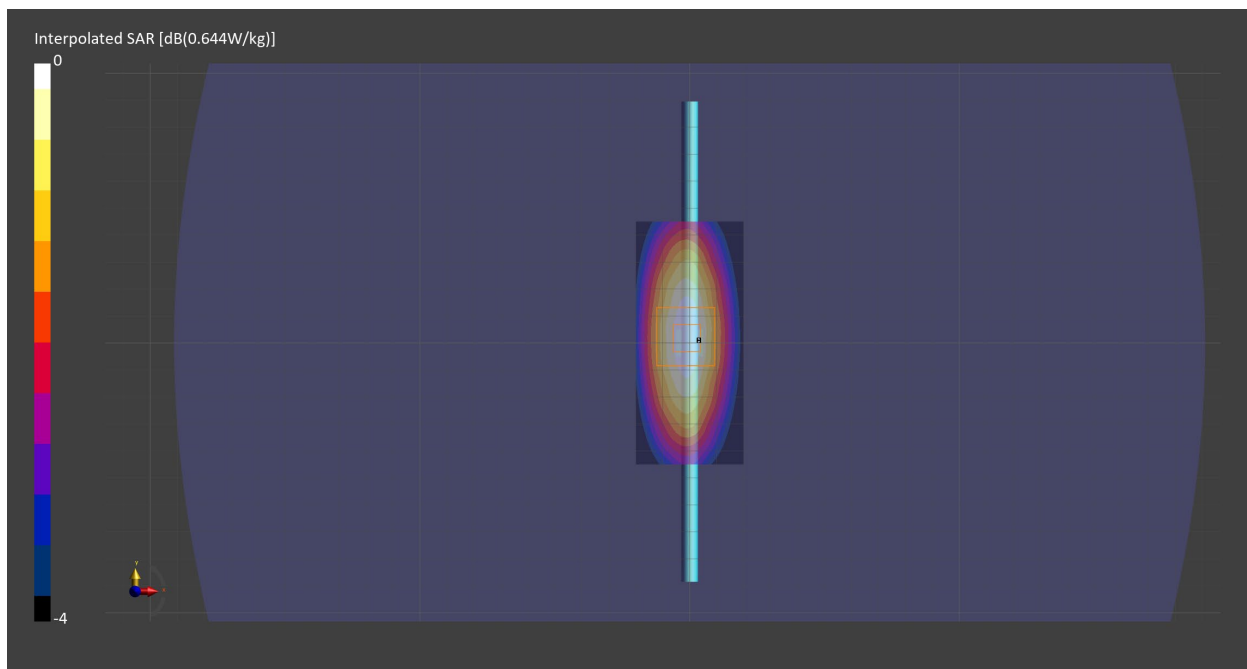
Probe Calibration Date	EX3DV4 - SN7709 2022-12-12	Phantom	ELI V5.0 (20deg probe tilt) - SN1196
DAE Calibration Date	DAE4 Sn1714 2022-11-23	TSL Meas. Date	HBBL-600-10000 2023-Jun-05

Scans Setup

	Area Scan	Zoom Scan
Grid Extents [mm]	40.0 x 90.0	30.0 x 30.0 x 30.0
Grid Steps [mm]	10.0 x 15.0	6.0 x 6.0 x 1.5
Sensor Surface [mm]	3.0	1.4
Graded Grid	n/a	Yes
M2/M1 [%]		87.7
Dist 3dB Peak [mm]		> 15.0

Measurement Results

	Area Scan	Zoom Scan
psSAR1g [W/Kg]	0.419	0.415
psSAR10g [W/Kg]	0.279	0.271
Power Drift [dB]	n/a	0.03



2023-06-12 System Performance Check Report D1900V2 - SN5d202

Summary

Dipole	D1900V2 - SN5d202		
Frequency [MHz]	1900.0		
Phantom Section TSL	Flat HSL	Dev. Peak [%]	10.3
Power [dBm]	17.0	Iso. Error [%]	-1.9

Exposure Conditions

Dipole Distance [mm]	10	TSL Permittivity	39.9
Conversion Factor	8.74	TSL Conductivity [S/m]	1.45

Hardware Setup

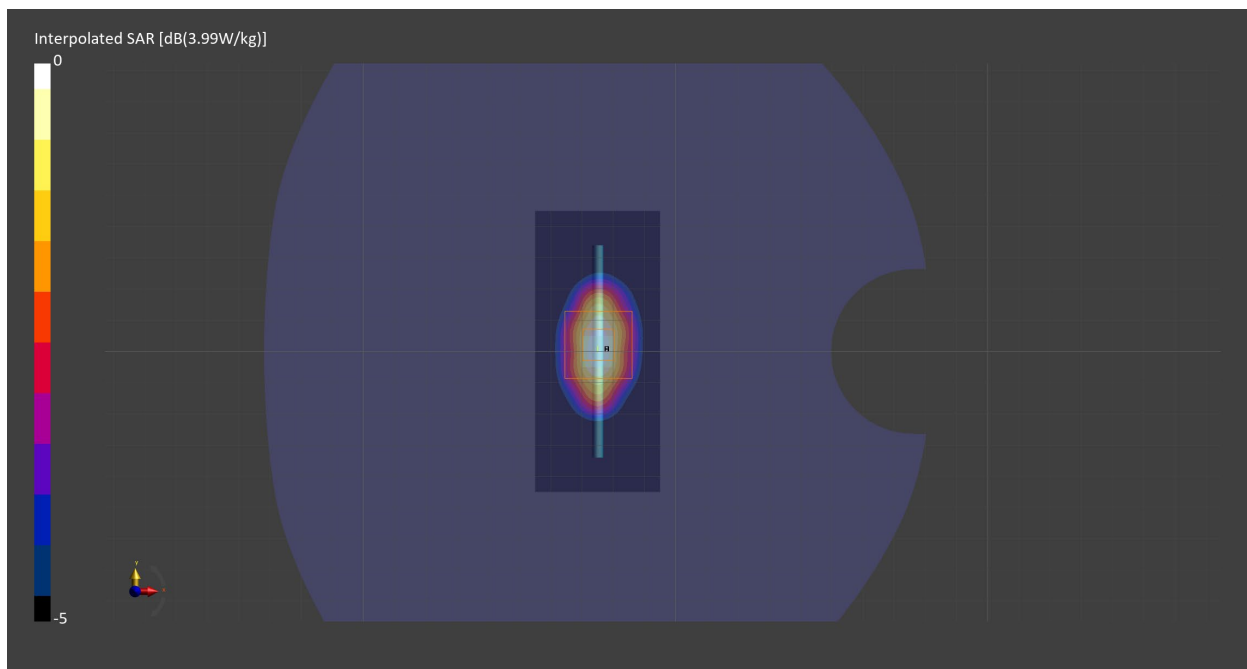
Probe Calibration Date	EX3DV4 - SN7709 2022-12-12	Phantom	Twin-SAM V8.0 (30deg probe tilt) - SN1742
DAE Calibration Date	DAE4 Sn1714 2022-11-23	TSL Meas. Date	HBBL-600-10000 2023-Jun-07

Scans Setup

	Area Scan	Zoom Scan
Grid Extents [mm]	40.0 x 90.0	30.0 x 30.0 x 30.0
Grid Steps [mm]	10.0 x 15.0	6.0 x 6.0 x 1.5
Sensor Surface [mm]	3.0	1.4
Graded Grid	n/a	Yes
M2/M1 [%]		80.9
Dist 3dB Peak [mm]		9.9

Measurement Results

	Area Scan	Zoom Scan
psSAR1g [W/Kg]	2.04	2.05
psSAR10g [W/Kg]	1.05	1.05
Power Drift [dB]	n/a	0.01



2023-06-12 System Performance Check Report D2600V2 - SN1104

Summary

Dipole	D2600V2 - SN1104		
Frequency [MHz]	2600.0		
Phantom Section TSL	Flat HSL	Dev. Peak [%]	1.1
Power [dBm]	17.0	Iso. Error [%]	2.0

Exposure Conditions

Dipole Distance [mm]	10	TSL Permittivity	37.3
Conversion Factor	8.2	TSL Conductivity [S/m]	1.95

Hardware Setup

Probe Calibration Date	EX3DV4 - SN7709 2022-12-12	Phantom	Twin-SAM V8.0 (30deg probe tilt) - SN1742
DAE Calibration Date	DAE4 Sn1714 2022-11-23	TSL Meas. Date	HBBL-600-10000 2023-Jun-12

Scans Setup

	Area Scan	Zoom Scan
Grid Extents [mm]	40.0 x 80.0	30.0 x 30.0 x 30.0
Grid Steps [mm]	10.0 x 10.0	5.0 x 5.0 x 1.5
Sensor Surface [mm]	3.0	1.4
Graded Grid	n/a	Yes
M2/M1 [%]		79.1
Dist 3dB Peak [mm]		9.0

Measurement Results

	Area Scan	Zoom Scan
psSAR1g [W/Kg]	2.81	2.78
psSAR10g [W/Kg]	1.25	1.24
Power Drift [dB]	n/a	0.00

