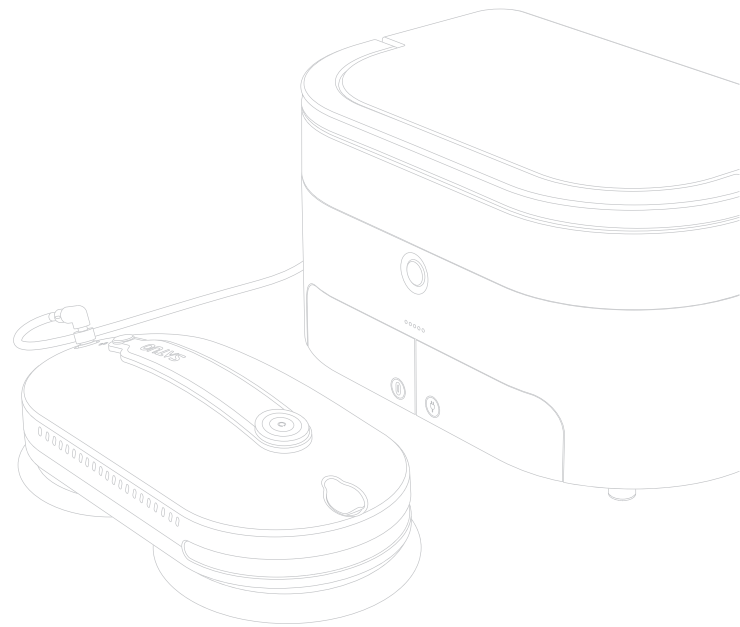


SATUO

SATUO PRO Window Cleaner Robot

Instruction manual



JSD ROBOT

Shanxi Jiashida Robot Technology Co.,Ltd.

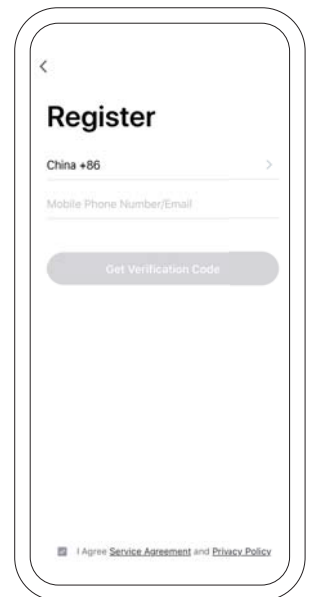
Address:17/F,Huanneng tech block,No.17,Gaoxin street,Comprehensive reform demonstration area,Taiyuan city,Shanxi province,China.

Website: www.jsd-robot.com





tuya Tuya Smart
Connection Guide

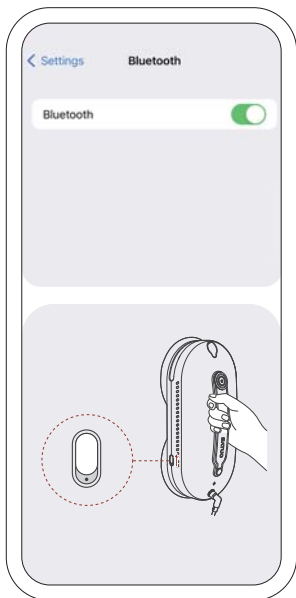


① Please download and access the APP by scanning the QR codes above. Or search "Smart Life" from APP store.

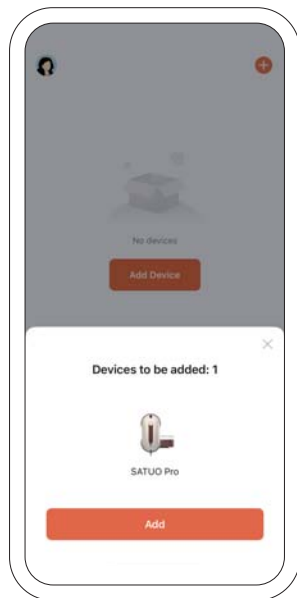
② For new users, register a new "Smart Life" account. For existing users, log into the "Smart Life" app.



tuya Tuya Smart
Connection Guide



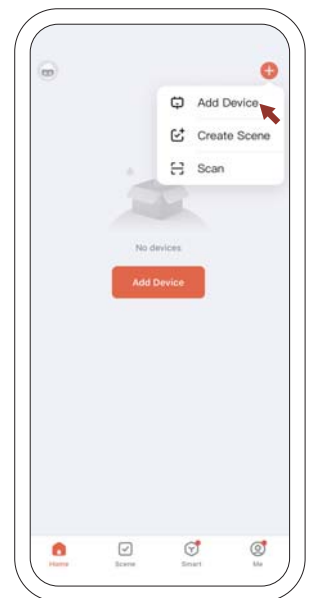
3 Turn on the bluetooth of your mobile phone, power on the device of Satuo Pro window cleaner robot. Ensure your phone is connected to the internet.



4 **Two different networking modes**
1. Automatically discover device. Click "Add".



tuya Tuya Smart
Connection Guide



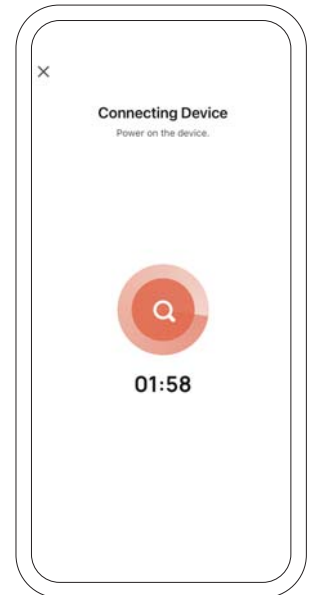
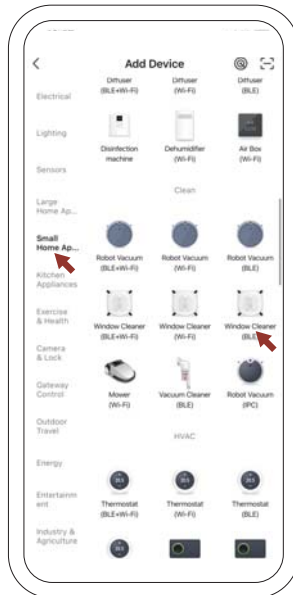
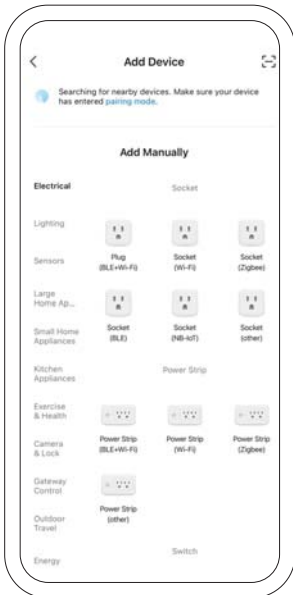
2. Manually add devices.
Open app and press "+" to add device, or click the "add device" button directly.



tuya Tuya Smart
Connection Guide



tuya Tuya Smart
Connection Guide



2.2 If the device is displayed on the top, you can click "Add device" directly. Find and click the "Small Home Appliances" and "Window Cleaner (BLE)".

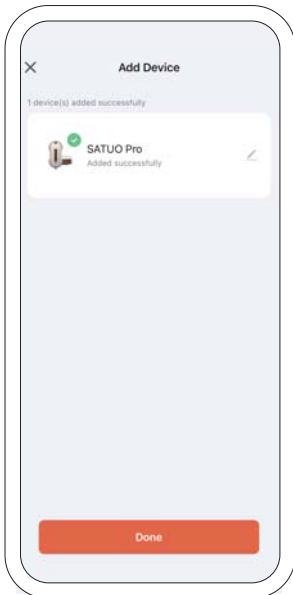
5 Check "Confirm the indicator is blinking".

6 Connecting the device.

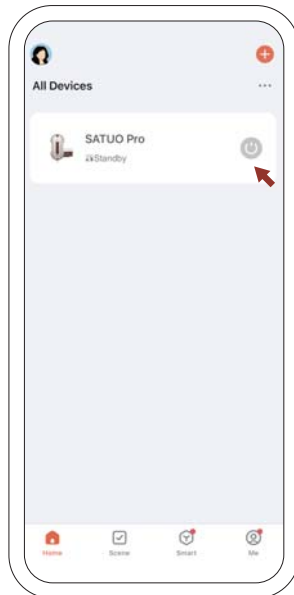


tuya Tuya Smart
Connection Guide

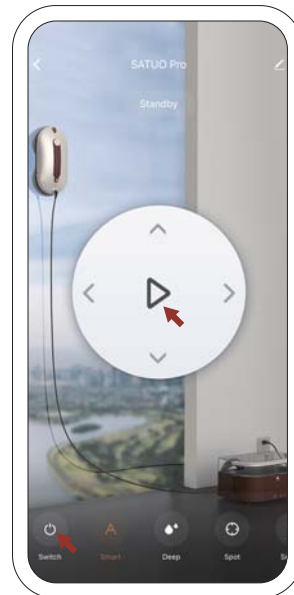
tuya Tuya Smart
Connection Guide



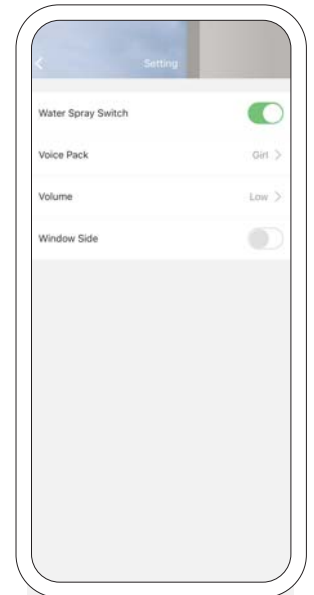
7 Add the device successfully.



8 Press any of three buttons to start/stop the device.



8.1 Select the modes according to the actual needs.

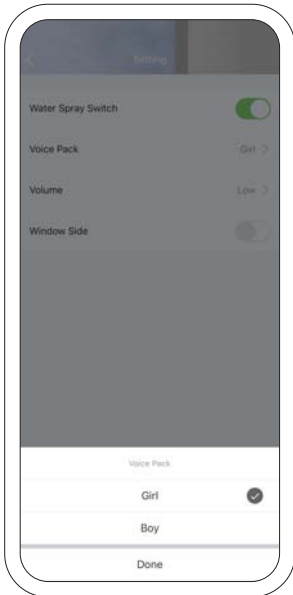


9 Control water spray.



tuya Tuya Smart
Connection Guide

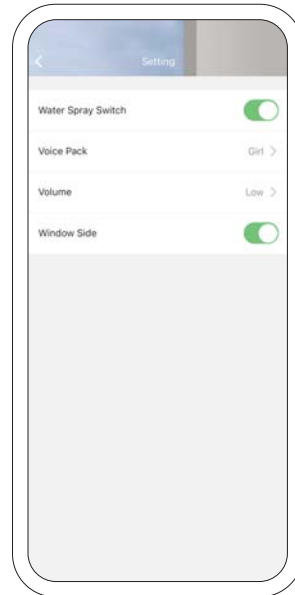
tuya Tuya Smart
Connection Guide



⑩ Choose different voices.



⑪ Adjust volume.



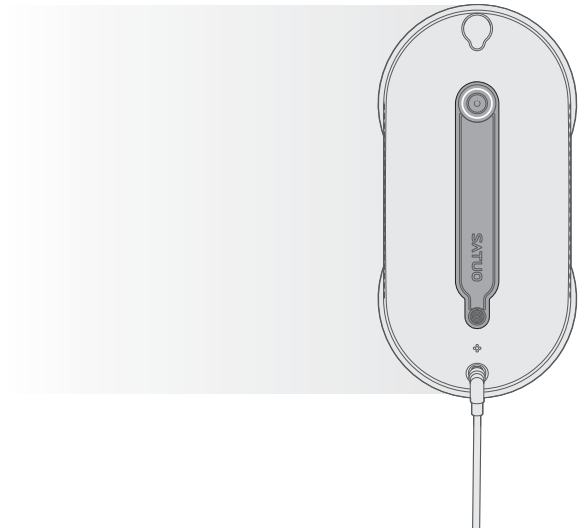
⑫ Switch to clean the window inside and out.



Safety specifications

Please read carefully before using the product.

1. The user should follow the instructions provided in this user manual, but is ultimately responsible for assessing placement and safety when using this device.
2. This device is not intended to be used by children under 8 or anyone lacking knowledge on proper use. Supervision may be necessary. Do not allow children to play with the device.
3. Remove any obstructions on the glass. Do not use on cracked glass. Reflective or coated glass may be scratched during operation by dirt on the glass.
4. Use only the power adapter supplied with this device. Use of other types of power adapters will result in malfunction or danger.
5. Do not use it in rainy, snowy days or in humid environments.
6. Do not spray or pour water on to the device.
7. Do not use in areas containing flammable or combustible liquids or gases.
8. If the supply cord is damaged, it must be replaced by the manufacturer or its service agent in order to avoid a hazard.
9. The plug must be removed from the socket before cleaning or maintaining the device.
10. Do not use on frameless glass.
11. If the device is not used for a long time, please turn off and store it in a dry environment after full charging, and charging it for at least three months to prevent the battery damage.
12. The battery must be replaced by the manufacturer or its service agent in order to avoid a hazard, the battery must be removed and discarded according to local laws and regulations before disposal of the device. The device must be disconnected from the socket before removing the battery for disposal of the device.
13. Fix the storage box, fasten the safety cord and tie to an indoor fixture before operating the device.

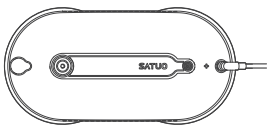


1. Product contents	4
1.1 Part components	4
1.2 Part name	5
2. Usage	7
2.1 Preparing	7
2.2 Steps	8
2.3 Remote controller instructions	14
3. Indication	15
4. Maintenance	16
5. Frequently asked questions (FAQ)	18
6. Specifications	19
7. Warranty	20

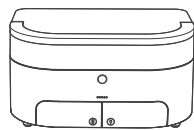
PACKING LIST



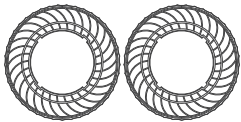
1. Product contents /1.1 Part components



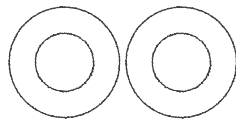
Window cleaner robot



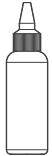
Base station



Cleaning disc*4 PCS



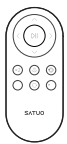
Cleaning cloth*6 PCS



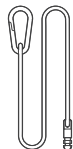
100ml water bottle



Glass cleaning tablets



Remote controller



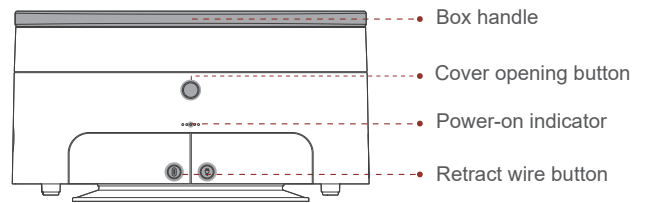
Safety rope

PART NAME

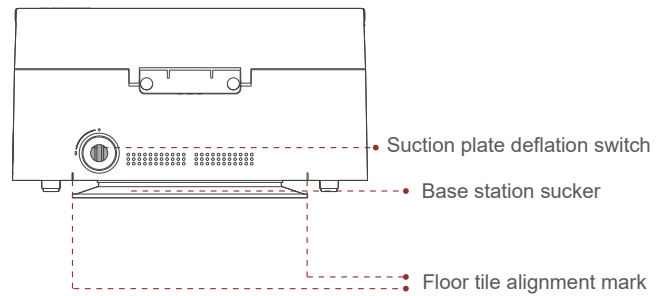


1. Product contents /1.2 Part name

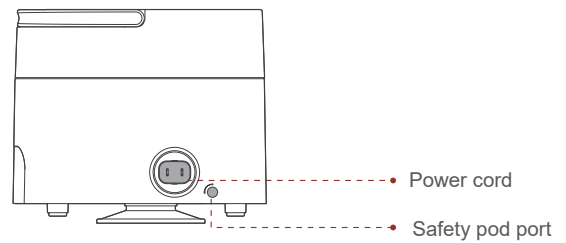
Front of base station



Back of base station



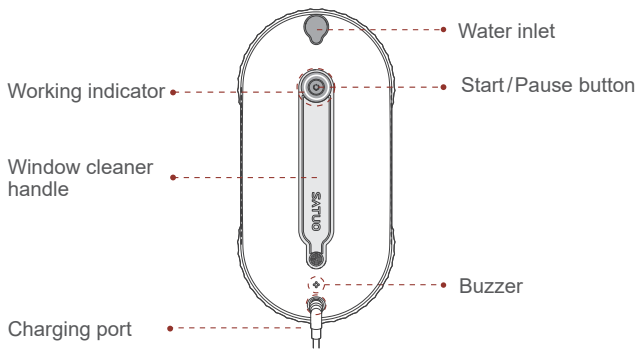
Side of base station



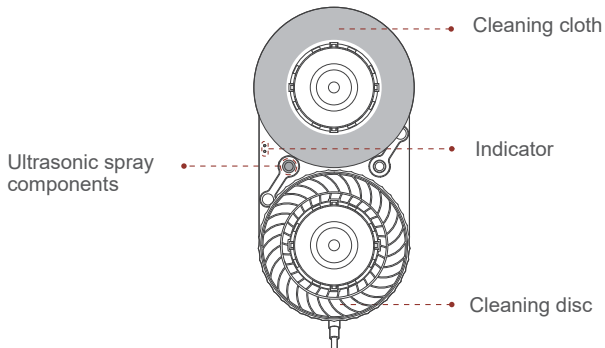
PART NAME



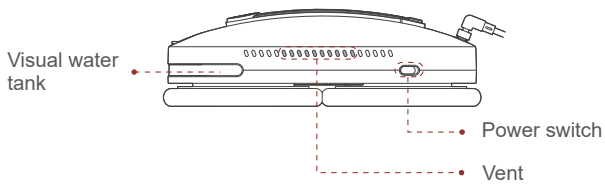
Front of device



Back of device



Side of device



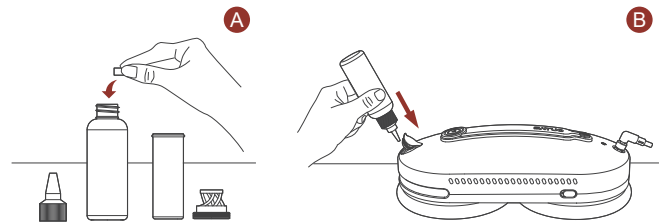
PREPARATION



2. Usage /2.1 Preparing

1 Add the cleaning solution

Put 1-2 pieces cleaning tablet into the water bottle, and add cleaning solution into the water tank after it is fully dissolved.

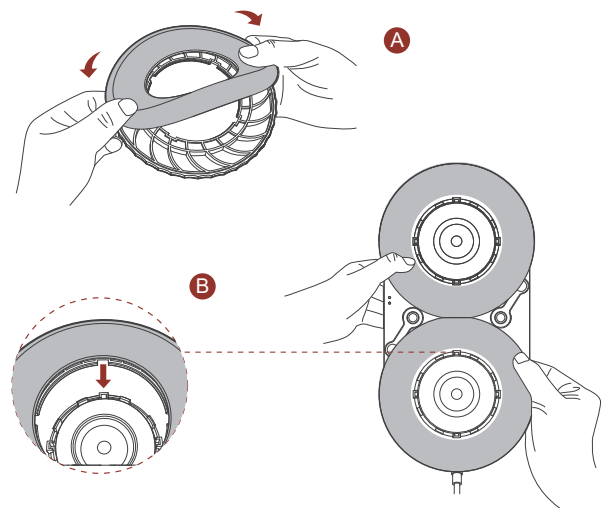


Put 1-2 pieces cleaning tablet into the water bottle.

The maximum capacity of the water tank is 50ml.

2 Installation of cleaning cloth and cleaning disc

Put the cleaning cloth on the cleaning disc, align the buckle, and fix the cleaning disc on the device.



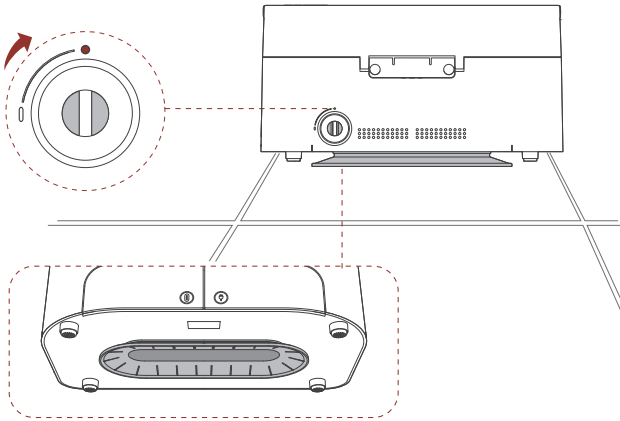
PREPARATION



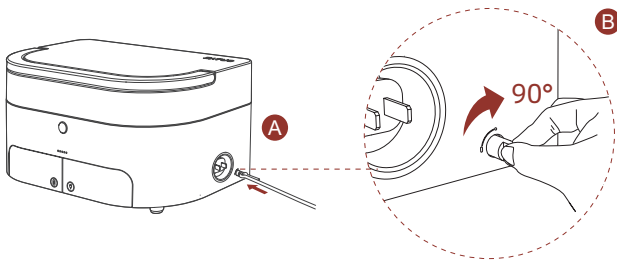
2. Usage /2.2 Steps

1 Adsorption base station

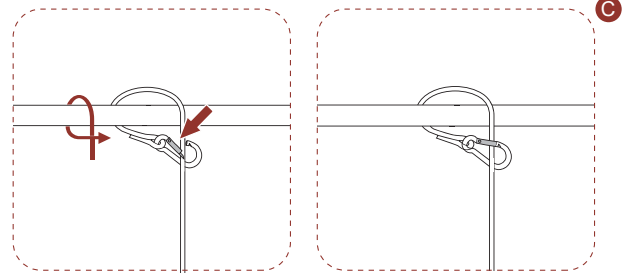
Put the base station on the surface of the fixed object with a clean and smooth surface (avoiding crevices), and turn the knob at the rear of the base station clockwise to the "O" to adsorb.



If the suction conditions are not available, please use the safety rope. Insert the safety rope buckle horizontally into the hole on the side of the base station, and rotate 90° clockwise to lock, fasten the safety rope and tie it to an indoor fixture before operating the device.



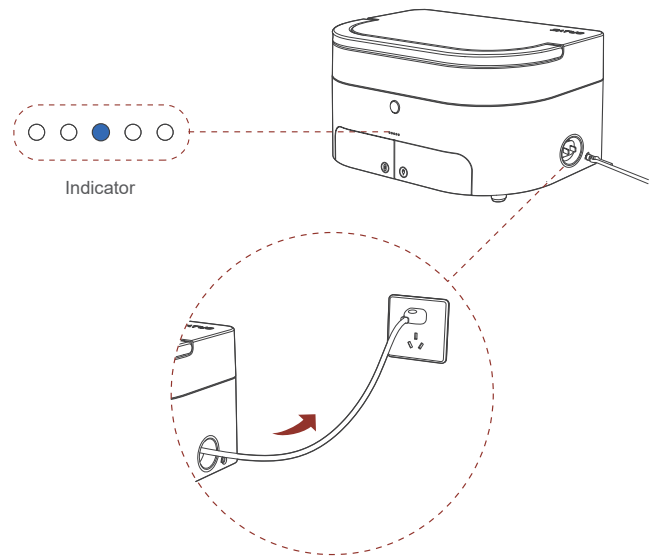
PREPARATION



*It is recommended to fix the safety rope buckle on the protective railing.

2 Connect the power

Pull out the plug from the base station and insert it into the socket. The blue indicator is always on to indicate that the power is on.

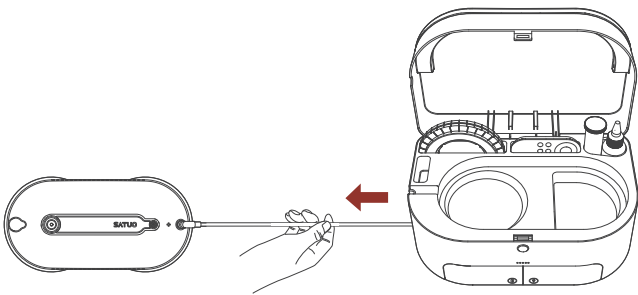


PREPARATION



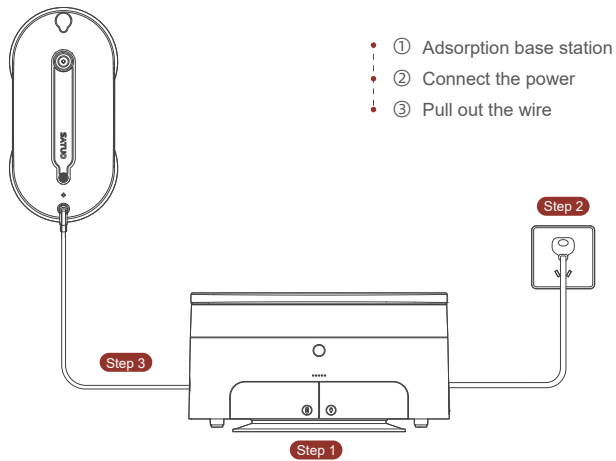
3 Pull out the wire

Pull power cord out to the appropriate length.



4 Connected successfully

When the device is working, do not disconnect the power. If the power is off during operation, the device must be retracted in time to prevent the device from falling.

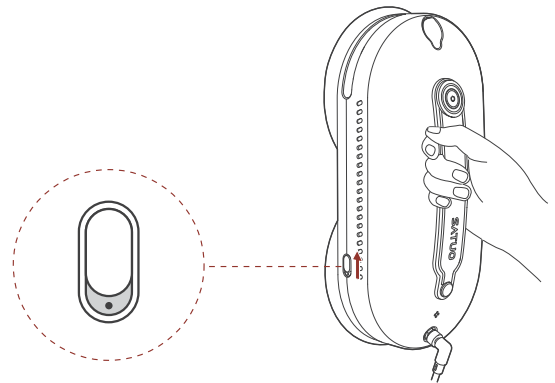


PREPARATION



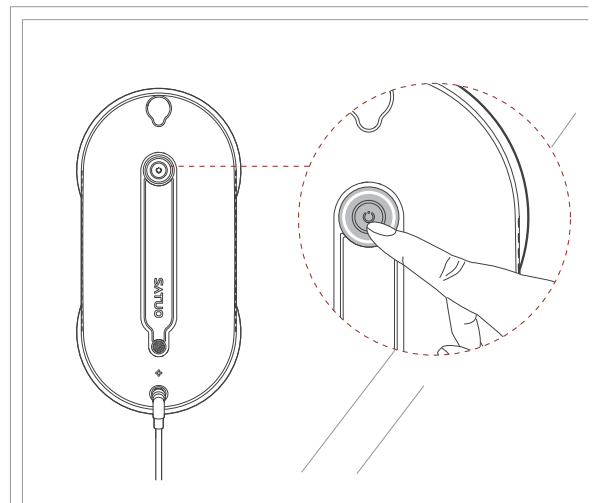
5 Start cleaning

Turn the power switch to the "I", then put the device on the glass after the white light is on and the fan starts.



6 Start working

After successful adsorption, press the start button, and the device will start cleaning in the automatic mode.

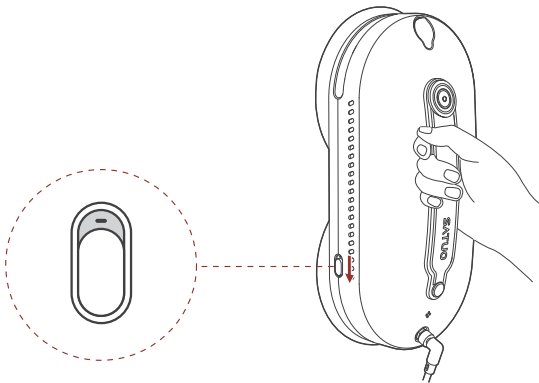


PREPARATION



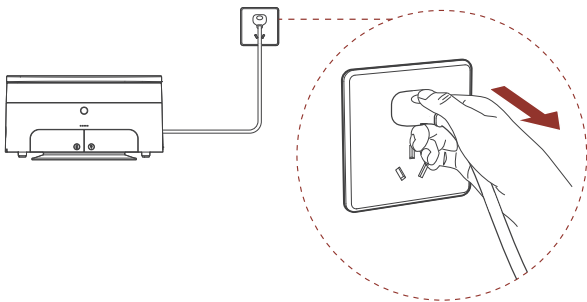
7 Finish cleaning

The device will automatically return to the starting position after finish cleaning. Remove the device first, then turn the power switch to the "O" and cut off the power.



8 Power off

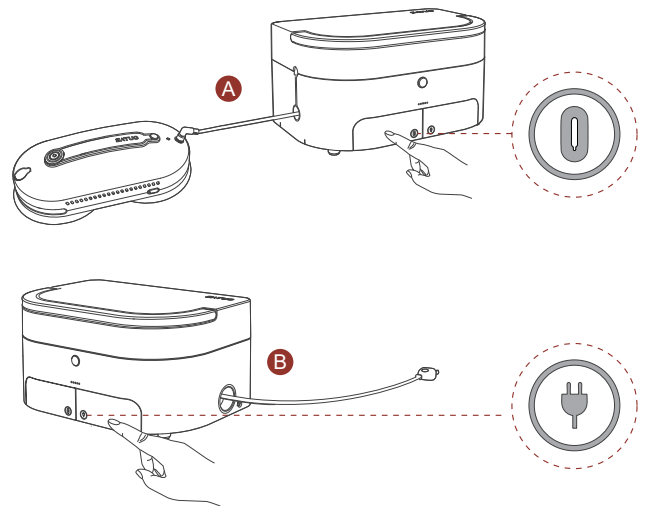
Unplug the base station.



9 Retract the wire

Press the button to retract the wire according to the logo.

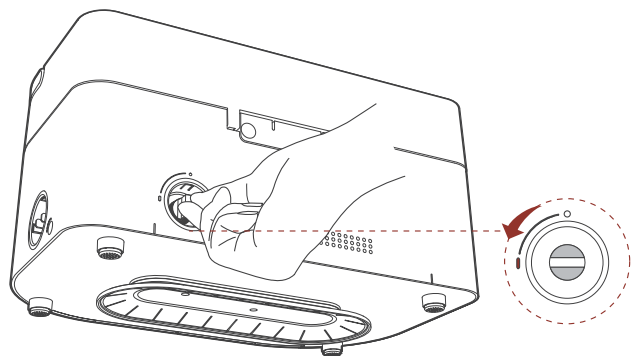
PREPARATION



⚠ Don't press the retract button when the device is working.

10 Suction disc deflation

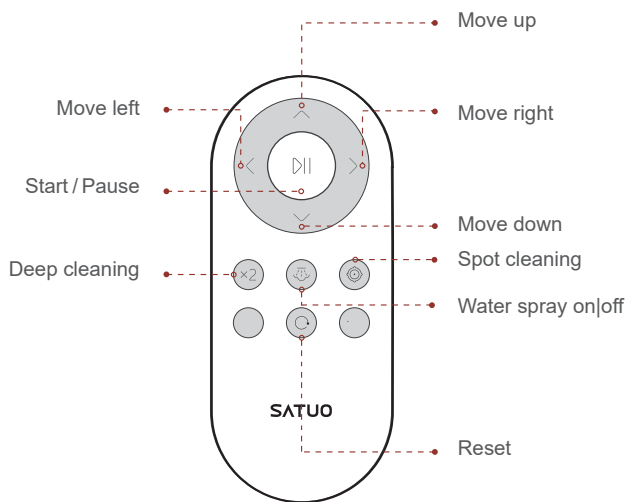
After storing the device and wires, turn the deflation switch counterclockwise to the "I" on the back of the base station.





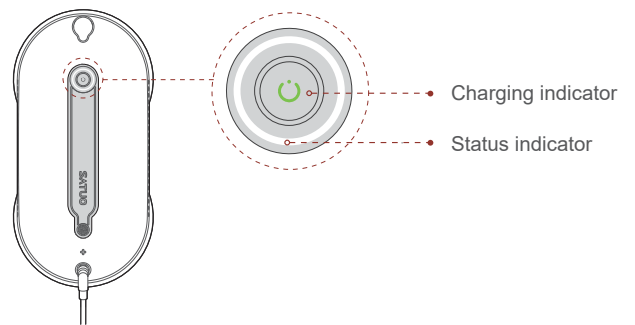
2. Usage / 2.3 Remote controller instructions

Remote controller



3. Indicator

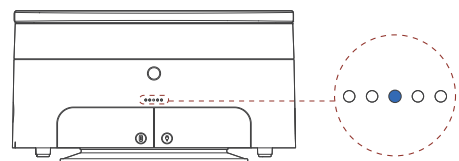
LED Indicator



	LED signal	Status	Description
Charging indicator	Green light	Flash	Battery charging
		Continuous on	Battery charged
Status indicator	Red light	Flash	Error
		Continuous on	Low battery
	White light	Continuous on	Pause, keep cleaning, finish cleaning

*The front LED signal indicator of the device is the same as the rear LED signal indicator light.

Base station indicator

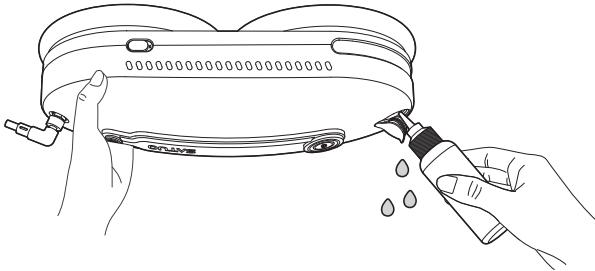


	LED signal	Status	Description
Base station indicator	Blue light	Continuous on	Base station power on

4. Maintenance

1 Cleaning water tank

After cleaning, please turn the device upside down, hold the water filling port with the bottle, and pour out the remaining liquid.



2 Cleaning mop cloth

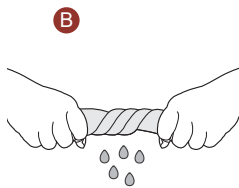
Remove the cleaning cloth, wash and dry.

*If the cleaning cloth becomes worn or no longer fits exactly within the fixed area, replace with a new one.

To purchase accessories, please contact customer service.



Wash mop cloth

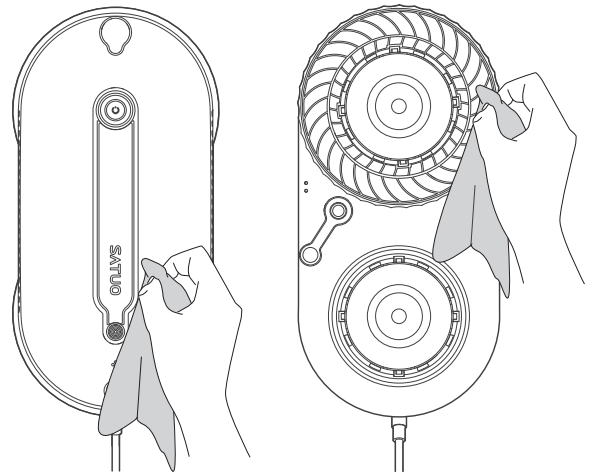


Dry mop cloth

3 Cleaning the device

When the device is dirty, don't wash it to avoid damage. If you need maintenance, please contact customer service.

*Power off operation





5. FAQ

Malfunction	Possible causes	Solutions
Device does not move smoothly, or it moves irregularly.	The cleaning cloth is too wet.	Replace with dry cleaning cloth.
	The cleaning cloth is too dirty.	Replace with clean and dry cloth.
	The walking disc is too dirty.	Please wipe the walking discs with a cleaning cloth, don't wash it to avoid damage.
	The cleaning disc is stuck.	Wipe the cleaning disc to remove dust and blockages.
Device stop running. Indicator light flashes red.	The cleaning cloth is attached incorrectly.	Please refer to 2.1, remove the cleaning cloth and re-attach it.
	An uneven cleaning surface (bumps, crevices)	Remove the device to a flat area.
	Power is off and low battery.	Check and connect the power.
	Incorrect installation of cleaning disc.	Please refer to 2.1, install the cleaning disc correctly.
No water spray	Water shortage	Please refer to 2.1, add cleaning solution into the water tank.
	Spray nozzle is blocked.	Please contact after-sales customer service.



6. Product Specifications

Suction power	3000pa	Input	100-240V~50/60HZ 2.5A
Rated voltage	24V	Battery capacity	550mAh
Rated power	120W	Water tank capacity	50ml
UPS (Uninterrupted Power System)	20mins	Spare safety rope length	80cm
DC power cord length	5m	AC power cord length of base station	2m

	Harmful materials					
	Pb	Hg	Cd	Aluminum	PBB	PBDE
Plastic parts	○	○	○	○	○	○
Hardware	○	○	○	○	○	○
Host circuit module	○	○	○	○	○	○
Electronic component	○	○	○	○	○	○
Battery	○	○	○	○	○	○
Power cords and adapters	○	○	○	○	○	○
Packaging and others	○	○	○	○	○	○
<p>○ : It means that the concentration of the toxic and harmful substance in all homogeneous materials of the component is compliance with the limitation stipulated in GB/T 26572.</p> <p>× : The concentration of the toxic and hazardous substances in certain homogeneous material of the component exceeds the limitation specified in GB/26572. The components marked "x" stands for no alternative technologies or components available at this stage, which meets the environmental protection requirements of the EU ROHS Directive.</p>						

It indicates that the product does not contain 6 toxic and harmful substances or it contains but less than the limited value.

WARRANTY DESCRIPTION



7. Warranty

Certificate

Model: _____ QC Inspector: _____ Production date: _____

Warranty card

Name: _____ TEL: _____ ADD: _____

Product SN code: _____ Purchase date: _____

Purchase channel: _____

This device complies with Part 15 of the FCC Rules.

Operation is subject to the following two conditions:

- (1) this device may not cause harmful interference, and
- (2) this device must accept any interference received, including interference that may cause undesired operation.

NOTE: This equipment has been tested and found to comply with the limits for a Class B digital device, pursuant to part 15 of the FCC Rules. These limits are designed to provide reasonable protection against harmful interference in a residential installation. This equipment generates, uses and can radiate radio frequency energy and, if not installed and used in accordance with the instructions, may cause harmful interference to radio communications. However, there is no guarantee that interference will not occur in a particular installation. If this equipment does cause harmful interference to radio or television reception, which can be determined by turning the equipment off and on, the user is encouraged to try to correct the interference by one or more of the following measures:

- Reorient or relocate the receiving antenna.
 - Increase the separation between the equipment and receiver.
 - Connect the equipment into an outlet on a circuit different from that to which the receiver is connected.
 - Consult the dealer or an experienced radio/TV technician for help.
- Changes or modifications not expressly approved by the party responsible for compliance could void the user's authority to operate the equipment.

Limited warranty

If there are defects in your SATUO PRO window cleaner robot due to faulty materials poor workmanship, or malfunction within the warranty period from the date of purchase or delivery. Please contact the customer service for repairs or replacement.

Non-warranty policy

- *Normal wear and tear (e.g. cleaning cloth, etc).
- *Reduction in battery discharge time due to battery age or use.
- *Damage caused by assembly or installation that is not in accordance with the instructions included with the SATUO PRO window cleaner robot.
- *Damage caused by using the SATUO PRO window cleaner robot for anything other than normal domestic household purposes.
- *Damage caused by using parts and accessories which are not specified by SATUO PRO window cleaner robot.
- *Damage caused by accidents, abuse or misuse.
- *Unable to provide valid purchase records.

If there is any problem when using the product and no solution in the instructions, please contact the after-sales service.

Copyright statement

Shanxi Jiashida Robot Technology Co., Ltd. owns content copyright of this document and reserves all rights. Without the written consent of our company, any part of this publication shall not be reset, transmitted, rewritten and stored in the information retrieval system or translated into any language in any form or by any means.