

TEST REPORT

Product Name : Machine entertainment system
Brand Mark : N/A
Model No. : ZH-DT6125-01
Extension model : SK8734012,SK8734010,SK8734011,
SV5734015,SV5734016,SV5734017,
MILA734002,MILA734001,MILA734003,
SK83B2,MILA734006
FCC ID : 2BACQMAXUS6125
Report Number : BLA-EMC-202303-A11902
Date of Sample Receipt : 2023/3/28
Date of Test : 2023/3/28 to 2023/4/28
Date of Issue : 2023/4/28
Test Standard : 47 CFR Part 15, Subpart C 15.247
Test Result : Pass

Prepared for:

China Satellite Navigation and Communication Co., Ltd
C5-C6, Siwei Tuxin Building, Yongfeng Road Haidian District, Beijing,
100012 CN

Prepared by:

BlueAsia of Technical Services(Shenzhen) Co.,Ltd.
Building C, No. 107, Shihuan Road, Shiyuan Sub-District, Baoan District,
Shenzhen, Guangdong Province, China
TEL: +86-755-23059481

Compiled by: *charlie*

Review by: *Sueels*

Approved by: *Blue Zheng*

Date: 2023/4/28



REPORT REVISE RECORD

Version No.	Date	Description
00	2023/4/28	Original

BlueAsia

TABLE OF CONTENTS

1 TEST SUMMARY	5
2 GENERAL INFORMATION	6
3 GENERAL DESCRIPTION OF E.U.T.....	6
4 TEST ENVIRONMENT	7
5 TEST MODE	7
6 MEASUREMENT UNCERTAINTY	7
7 DESCRIPTION OF SUPPORT UNIT	8
8 LABORATORY LOCATION	8
9 TEST INSTRUMENTS LIST	9
10 DWELL TIME	11
10.1 LIMITS	11
10.2 BLOCK DIAGRAM OF TEST SETUP	11
10.3 TEST DATA	12
11 HOPPING CHANNEL NUMBER	13
11.1 LIMITS	13
11.2 BLOCK DIAGRAM OF TEST SETUP	13
11.3 TEST DATA	13
12 CARRIER FREQUENCIES SEPARATION	14
12.1 LIMITS	14
12.2 BLOCK DIAGRAM OF TEST SETUP	14
12.3 TEST DATA	14
13 20DB BANDWIDTH	15
13.1 BLOCK DIAGRAM OF TEST SETUP	15
13.2 TEST DATA	15
14 CONDUCTED PEAK OUTPUT POWER	16
14.1 LIMITS	16
14.2 BLOCK DIAGRAM OF TEST SETUP	16
14.3 TEST DATA	17
15 RADIATED SPURIOUS EMISSIONS	18

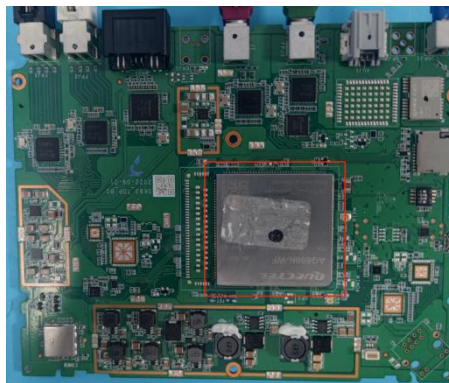
15.1 LIMITS	18
15.2 BLOCK DIAGRAM OF TEST SETUP	19
15.3 PROCEDURE	19
15.4 TEST DATA	21
16 RADIATED EMISSIONS WHICH FALL IN THE RESTRICTED BANDS	29
16.1 LIMITS	29
16.2 BLOCK DIAGRAM OF TEST SETUP	30
16.3 PROCEDURE	30
16.4 TEST DATA	32
17 ANTENNA REQUIREMENT	36
17.1 CONCLUSION	36
18 CONDUCTED SPURIOUS EMISSIONS	37
18.1 LIMITS	37
18.2 BLOCK DIAGRAM OF TEST SETUP	37
18.3 TEST DATA	38
19 CONDUCTED BAND EDGES MEASUREMENT	39
19.1 LIMITS	39
19.2 BLOCK DIAGRAM OF TEST SETUP	39
19.3 TEST DATA	40
20 APPENDIX	41
20.1 MAXIMUM CONDUCTED OUTPUT POWER	41
20.2 -20dB BANDWIDTH	46
20.3 OCCUPIED CHANNEL BANDWIDTH	51
20.4 BAND EDGE	56
20.5 BAND EDGE(HOPPING)	63
20.6 CONDUCTED RF SPURIOUS EMISSION	70
20.7 CARRIER FREQUENCIES SEPARATION	80
20.8 NUMBER OF HOPPING CHANNEL	82
20.9 DWELL TIME	84
APPENDIX A: PHOTOGRAPHS OF TEST SETUP	92
APPENDIX B: PHOTOGRAPHS OF EUT	93

1 TEST SUMMARY

Test item	Test Requirement	Test Method	Class/Severity	Result
Dwell Time	47 CFR Part 15, Subpart C 15.247	ANSI C63.10 (2013) Section 7.8.4	47 CFR Part 15, Subpart C 15.247a(1)(iii)	Pass
Hopping Channel Number	47 CFR Part 15, Subpart C 15.247	ANSI C63.10 (2013) Section 7.8.3	47 CFR Part 15, Subpart C 15.247a(1)(iii)	Pass
Carrier Frequencies Separation	47 CFR Part 15, Subpart C 15.247	ANSI C63.10 (2013) Section 7.8.2	47 CFR Part 15, Subpart C 15.247a(1)	Pass
20dB Bandwidth	47 CFR Part 15, Subpart C 15.247	ANSI C63.10 (2013) Section 7.8.7	47 CFR Part 15, Subpart C 15.247(a)(1)	Pass
Conducted Peak Output Power	47 CFR Part 15, Subpart C 15.247	ANSI C63.10 (2013) Section 7.8.5	47 CFR Part 15, Subpart C 15.247(b)(3)	Pass
Conducted Emissions at AC Power Line (150kHz-30MHz)	47 CFR Part 15, Subpart C 15.247	ANSI C63.10 (2013) Section 6.2	47 CFR Part 15, Subpart C 15.207	N/A
Radiated Spurious Emissions	47 CFR Part 15, Subpart C 15.247	ANSI C63.10 (2013) Section 6.4,6.5,6.6	47 CFR Part 15, Subpart C 15.209 & 15.247(d)	Pass
Radiated Emissions which fall in the restricted bands	47 CFR Part 15, Subpart C 15.247	ANSI C63.10 (2013) Section 6.10.5	47 CFR Part 15, Subpart C 15.209 & 15.247(d)	Pass
Antenna Requirement	47 CFR Part 15, Subpart C 15.247	N/A	47 CFR Part 15, Subpart C 15.203 & 15.247(c)	Pass
Conducted Spurious Emissions	47 CFR Part 15, Subpart C 15.247	ANSI C63.10 (2013) Section 7.8.6 & Section 11.11	47 CFR Part 15, Subpart C 15.247(d)	Pass
Conducted Band Edges Measurement	47 CFR Part 15, Subpart C 15.247	ANSI C63.10 (2013) Section 7.8.8 & Section 11.13.3.2	47 CFR Part 15, Subpart C 15.247(d)	Pass

Remark:N/A: Not Applicable

The above test is for Bluetooth module 1:



2 GENERAL INFORMATION

Applicant	China Satellite Navigation and Communication Co., Ltd
Address	C5-C6, Siwei Tuxin Building, Yongfeng Road Haidian District, Beijing, 100012 CN
Manufacturer	China Satellite Navigation and Communication Co., Ltd
Address	C5-C6, Siwei Tuxin Building, Yongfeng Road Haidian District, Beijing, 100012 CN
Factory	China Satellite Navigation and Communication Co., Ltd
Address	C5-C6, Siwei Tuxin Building, Yongfeng Road Haidian District, Beijing, 100012 CN
Product Name	Machine entertainment system
Test Model No.	ZH-DT6125-01
Extension model	SK8734012,SK8734010,SK8734011,SV5734015,SV5734016,SV5734017, MILA734002,MILA734001,MILA734003,SK83B2,MILA734006
Remark	MILA734001, MILA734002,MILA734003, MILA734006,SK83B2Their electrical circuit design, layout, components used and internal wiring are identical,Only the item number and color are different.

3 GENERAL DESCRIPTION OF E.U.T.

Hardware Version	N/A
Software Version	N/A
Operation Frequency:	2402MHz-2480MHz
Modulation Type:	GFSK, pi/4DQPSK,8DPSK
Channel Spacing:	1MHz
Number of Channels:	79
Antenna Type:	FPC Antenna
Antenna Gain:	5dBi(Provided by the customer)

4 TEST ENVIRONMENT

Environment	Temperature	Voltage
Normal	25°C	12Vdc

5 TEST MODE

TEST MODE	TEST MODE DESCRIPTION
TX	Keep the EUT in continuously transmitting mode with modulation. (hopping and non hopping mode all have been tested, non hopping mode is worse case for RE)
Remark: Full battery is used during all test except ac conducted emission, DH1, DH3, DH5 all have been tested, during the test, GFSK, Pi/4QPSK, modulation were all pre-scanned Only the Pi/4QPSK of the worst mode would be recorded in this report.	

6 MEASUREMENT UNCERTAINTY

Parameter	Expanded Uncertainty (Confidence of 95%)
Radiated Emission(9kHz-30MHz)	±4.34dB
Radiated Emission(30Mz-1000MHz)	±4.24dB
Radiated Emission(1GHz-18GHz)	±4.68dB
AC Power Line Conducted Emission(150kHz-30MHz)	±3.45dB

7 DESCRIPTION OF SUPPORT UNIT

Device Type	Manufacturer	Model Name	Serial No.	Remark
DC source	N/A	N/A	N/A	N/A
PC	HASEE	K610D	N/A	N/A

8 LABORATORY LOCATION

All tests were performed at:
BlueAsia of Technical Services(Shenzhen) Co., Ltd.
Building C, No. 107, Shihuan Road, Shiyuan Sub-District, Baoan District, Shenzhen, Guangdong Province,
China
Telephone: TEL: +86-755-28682673 FAX: +86-755-28682673
No tests were sub-contracted.

9 TEST INSTRUMENTS LIST

Test Equipment Of Radiated Spurious Emissions					
Equipment	Manufacturer	Model	S/N	Cal.Date	Cal.Due
Chamber 1	SKET	966	N/A	2020/11/10	2023/11/09
Chamber 2	SKET	966	N/A	2021/07/20	2024/07/19
Spectrum	R&S	FSP40	100817	2022/09/15	2023/09/14
Receiver	R&S	ESR7	101199	2022/09/15	2023/09/14
Receiver	R&S	ESPI7	101477	2022/07/16	2023/07/15
broadband Antenna	Schwarzbeck	VULB9168	00836 P:00227	2022/09/15	2023/09/14
Horn Antenna	Schwarzbeck	BBHA9120D	01892 P:00331	2022/09/13	2025/09/12
Amplifier	SKET	LNPA_30M01G-30	SK2021060801	2022/07/16	2023/07/15
Amplifier	SKET	PA-000318G-45	N/A	2022/09/13	2023/09/12
Amplifier	SKET	LNPA_18G40G-50	SK2022071301	2022/07/14	2023/07/13
Filter group	SKET	2.4G/5G Filter group r	N/A	2022/07/16	2023/07/15
EMI software	EZ	EZ-EMC	EEMC-3A1	N/A	N/A
Loop antenna	SCHNARZBECK	FMZB1519B	00102	2022/9/14	2025/9/13
Controller	SKET	N/A	N/A	N/A	N/A
Coaxial Cable	BlueAsia	BLA-XC-02	N/A	N/A	N/A
Coaxial Cable	BlueAsia	BLA-XC-03	N/A	N/A	N/A
Coaxial Cable	BlueAsia	BLA-XC-01	N/A	N/A	N/A

Test Equipment Of Conducted Emissions at AC Power Line (150kHz-30MHz)					
Equipment	Manufacturer	Model	S/N	Cal.Date	Cal.Due
Shield room	SKET	833	N/A	2020/11/25	2023/11/24
Receiver	R&S	ESPI3	101082	2022/09/14	2023/09/13
LISN	R&S	ENV216	3560.6550.15	2022/09/14	2023/09/13
LISN	AT	AT166-2	AKK1806000003	2022/09/14	2023/09/13
ISN	TESEQ	ISNT8-cat6	53580	2022/09/14	2023/09/13
Single-channel vehicle artificial power network	Schwarzbeck	NNBM 8124	01045	2022/08/17	2023/08/16
Single-channel vehicle artificial power network	Schwarzbeck	NNBM 8124	01075	2022/08/17	2023/08/16
EMI software	EZ	EZ-EMC	EEMC-3A1	N/A	N/A

Test Equipment Of RF Conducted Test					
Equipment	Manufacturer	Model	S/N	Cal.Date	Cal.Due
Spectrum	R&S	FSP40	100817	2022/09/15	2023/09/14
Spectrum	Agilent	N9020A	MY49100060	2022/09/07	2023/09/06
Spectrum	KEYSIGHT	N9030A	MY52350152	2022/07/01	2023/06/30
Spectrum	KEYSIGHT	N9010A	MY54330814	2022/07/01	2023/06/30
Signal Generator	Agilent	N5182A	MY47420955	2022/09/07	2023/09/06
Signal Generator	Agilent	E8257D	MY44320250	2022/07/01	2023/06/30
Signal Generator	Agilent	N5181A	MY46240904	2022/08/02	2023/08/01
Signal Generator	R&S	CMW500	132429	2022/09/07	2023/09/06
BluetoothTester	Anritsu	MT8852B	06262047872	2022/09/07	2023/09/06
Power probe	DARE	RPR3006W	14100889SN042	2022/09/07	2023/09/06
DCPowersupply	zhaoxin	KXN-305D	20K305D1221363	2022/09/14	2023/09/13
DCPowersupply	zhaoxin	RXN-1505D	19R1505D050168	2022/09/14	2023/09/13
Audio Analyzer	Audioprecision	N/A	ATSI-41094	2022/7/1	2023/6/30
2.4GHz/5GHz RF Test software	MTS	MTS 8310	Version 2.0.0.0	N/A	N/A

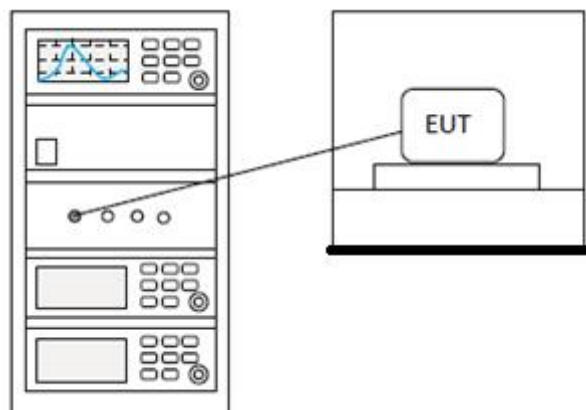
10 DWELL TIME

Test Standard	47 CFR Part 15, Subpart C 15.247
Test Method	ANSI C63.10 (2013) Section 7.8.4
Test Mode (Pre-Scan)	TX
Test Mode (Final Test)	TX
Tester	Charlie
Temperature	25°C
Humidity	60%

10.1 LIMITS

Frequency(MHz)	Limit
902-928	0.4S within a 20S period(20dB bandwidth<250kHz)
	0.4S within a 10S period(20dB bandwidth≥250kHz)
2400-2483.5	0.4S within a period of 0.4S multiplied by the number of hopping channels
5725-5850	0.4S within a 30S period

10.2 BLOCK DIAGRAM OF TEST SETUP



10.3 TEST DATA

Pass: Please Refer To Appendix: Appendix1 For Details

BlueAsia

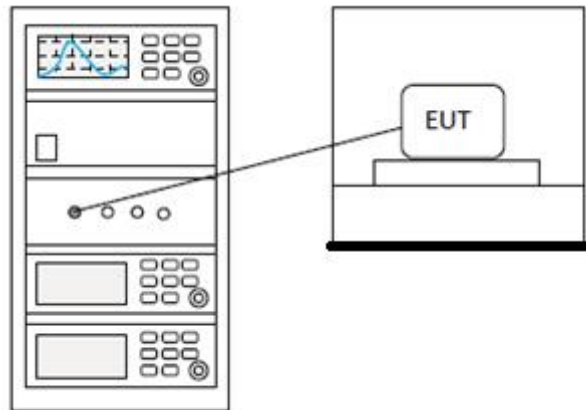
11 HOPPING CHANNEL NUMBER

Test Standard	47 CFR Part 15, Subpart C 15.247
Test Method	ANSI C63.10 (2013) Section 7.8.3
Test Mode (Pre-Scan)	TX
Test Mode (Final Test)	TX
Tester	Charlie
Temperature	25°C
Humidity	60%

11.1 LIMITS

Frequency range(MHz)	Number of hopping channels (minimum)
902-928	50 for 20dB bandwidth <250kHz
	25 for 20dB bandwidth ≥250kHz
2400-2483.5	15
5725-5850	75

11.2 BLOCK DIAGRAM OF TEST SETUP



11.3 TEST DATA

Pass: Please Refer To Appendix: Appendix1 For Details

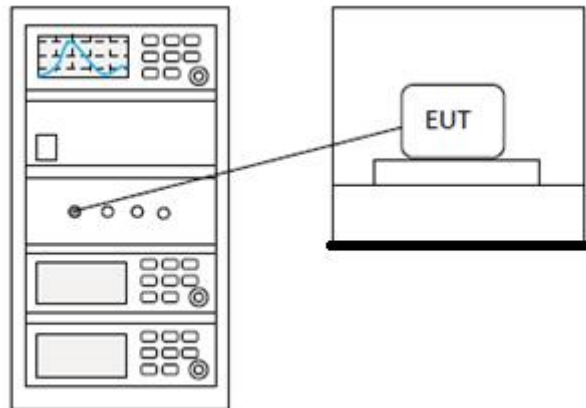
12 CARRIER FREQUENCIES SEPARATION

Test Standard	47 CFR Part 15, Subpart C 15.247
Test Method	ANSI C63.10 (2013) Section 7.8.2
Test Mode (Pre-Scan)	TX
Test Mode (Final Test)	TX
Tester	Charlie
Temperature	25°C
Humidity	60%

12.1 LIMITS

Limit: 2/3 of the 20dB bandwidth base on the transmission power is less than 0.125W

12.2 BLOCK DIAGRAM OF TEST SETUP



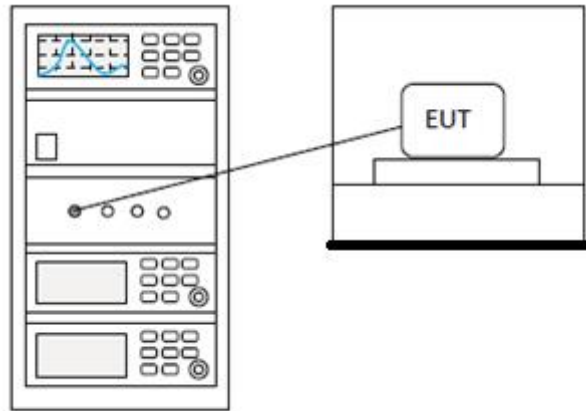
12.3 TEST DATA

Pass: Please Refer To Appendix: Appendix1 For Details

13 20DB BANDWIDTH

Test Standard	47 CFR Part 15, Subpart C 15.247
Test Method	ANSI C63.10 (2013) Section 7.8.7
Test Mode (Pre-Scan)	TX
Test Mode (Final Test)	TX
Tester	Charlie
Temperature	25°C
Humidity	60%

13.1 BLOCK DIAGRAM OF TEST SETUP



13.2 TEST DATA

Pass: Please Refer To Appendix: Appendix1 For Details

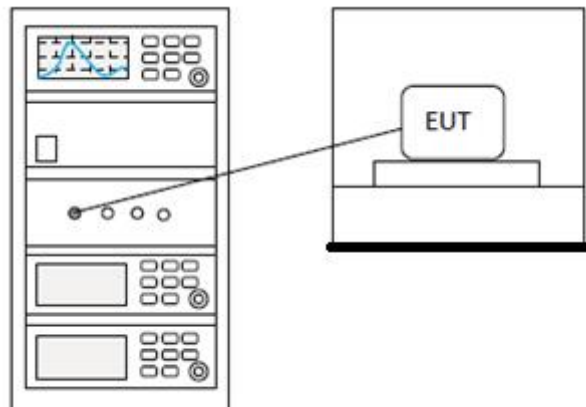
14 CONDUCTED PEAK OUTPUT POWER

Test Standard	47 CFR Part 15, Subpart C 15.247
Test Method	ANSI C63.10 (2013) Section 7.8.5
Test Mode (Pre-Scan)	TX
Test Mode (Final Test)	TX
Tester	Charlie
Temperature	25°C
Humidity	60%

14.1 LIMITS

Frequency range(MHz)	Output power of the intentional radiator(watt)
902-928	1 for ≥ 50 hopping channels
	0.25 for $25 \leq$ hopping channels < 50
	1 for digital modulation
2400-2483.5	1 for ≥ 75 non-overlapping hopping channels
	0.125 for all other frequency hopping systems
	1 for digital modulation
5725-5850	1 for frequency hopping systems and digital modulation

14.2 BLOCK DIAGRAM OF TEST SETUP



14.3 TEST DATA

Pass: Please Refer To Appendix: Appendix1 For Details

BlueAsia

15 RADIATED SPURIOUS EMISSIONS

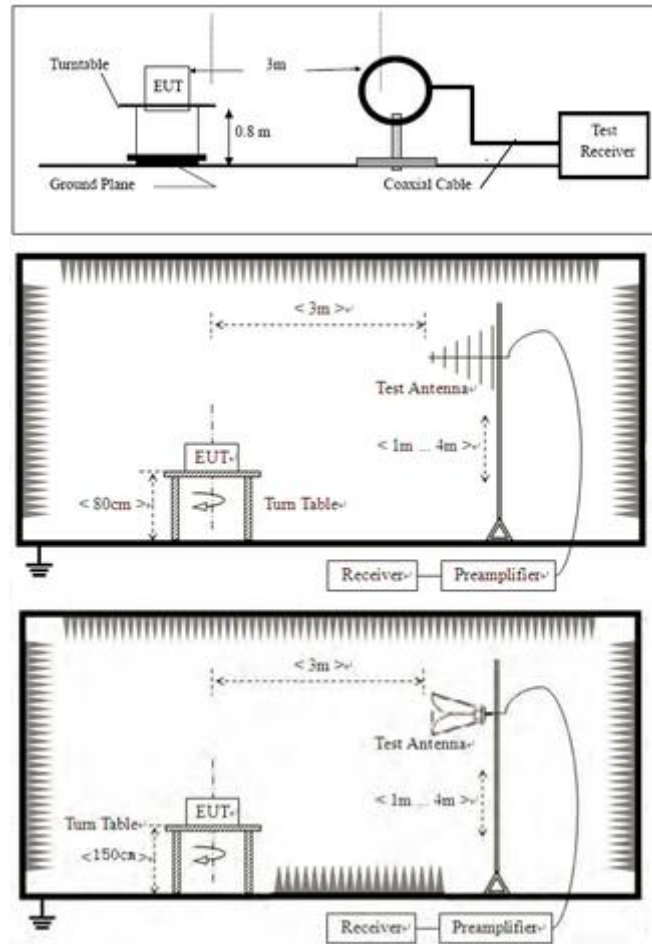
Test Standard	47 CFR Part 15, Subpart C 15.247
Test Method	ANSI C63.10 (2013) Section 6.4,6.5,6.6
Test Mode (Pre-Scan)	TX
Test Mode (Final Test)	TX
Tester	Charlie
Temperature	25°C
Humidity	60%

15.1 LIMITS

Frequency(MHz)	Field strength(microvolts/meter)	Measurement distance(meters)
0.009-0.490	2400/F(kHz)	300
0.490-1.705	24000/F(kHz)	30
1.705-30.0	30	30
30-88	100	3
88-216	150	3
216-960	200	3
Above 960	500	3

Remark: The emission limits shown in the above table are based on measurements employing a CISPR quasi-peak detector except for the frequency bands 9-90kHz, 110-490kHz and above 1000 MHz. Radiated emission limits in these three bands are based on measurements employing an average detector, the peak field strength of any emission shall not exceed the maximum permitted average limits specified above by more than 20 dB under any condition of modulation.

15.2 BLOCK DIAGRAM OF TEST SETUP



15.3 PROCEDURE

- For below 1GHz, the EUT was placed on the top of a rotating table 0.8 meters above the ground at a 3 or 10 meter semi-anechoic chamber. The table was rotated 360 degrees to determine the position of the highest radiation.
- For above 1GHz, the EUT was placed on the top of a rotating table 1.5 meters above the ground at a 3 meter fully-anechoic chamber. The table was rotated 360 degrees to determine the position of the highest radiation.
- The EUT was set 3 or 10 meters away from the interference-receiving antenna, which was mounted on the top of a variable-height antenna tower.
- The antenna height is varied from one meter to four meters above the ground to determine the maximum value of the field strength. Both horizontal and vertical polarizations of the antenna are set to make the measurement.
- For each suspected emission, the EUT was arranged to its worst case and then the antenna was tuned to heights from 1 meter to 4 meters (for the test frequency of below 30MHz, the antenna was tuned to heights 1 meter) and the rotatable table was turned from 0 degrees to 360 degrees to find the maximum reading.
- The test-receiver system was set to Peak Detect Function and Specified Bandwidth with Maximum Hold Mode.
- If the emission level of the EUT in peak mode was 10dB lower than the limit specified, then testing could be stopped and the peak values of the EUT would be reported. Otherwise the emissions that did not have 10dB margin would be re-tested one by one using peak, quasi-peak or average method as specified and then reported in a data sheet.

- h. Test the EUT in the lowest channel, the middle channel, the Highest channel.
- i. The radiation measurements are performed in X, Y, Z axis positioning for Transmitting mode, and found the X axis positioning which it is the worst case.
- j. Repeat above procedures until all frequencies measured was complete.

Remark:

- 1) For emission below 1GHz, through pre-scan found the worst case is the lowest channel. Only the worst case is recorded in the report.
- 2) The field strength is calculated by adding the Antenna Factor, Cable Factor & Preamplifier. The basic equation with a sample calculation is as follows:
Final Test Level = Receiver Reading + Antenna Factor + Cable Factor - Preamplifier Factor
- 3) Scan from 9kHz to 25GHz, the disturbance above 12.75GHz and below 30MHz was very low. The points marked on above plots are the highest emissions could be found when testing, so only above points had been displayed. The amplitude of spurious emissions from the radiator which are attenuated more than 20dB below the limit need not be reported. fundamental frequency is blocked by filter, and only spurious emission is shown.
- 4) For frequencies above 1GHz, the field strength limits are based on average limits. However, the peak field strength of any emission shall not exceed the maximum permitted average limits specified above by more than 20 dB under any condition of modulation. For the emissions whose peak level is lower than the average limit, only the peak measurement is shown in the report.